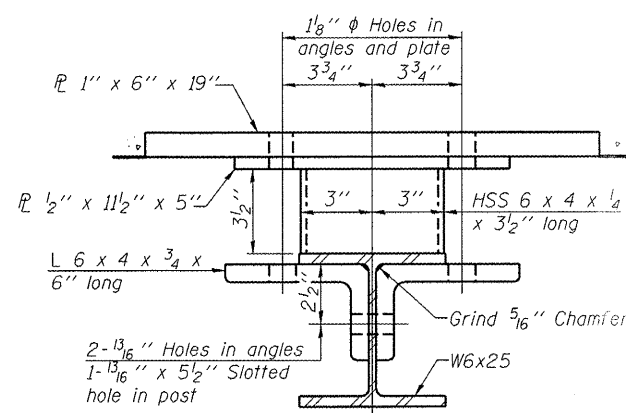
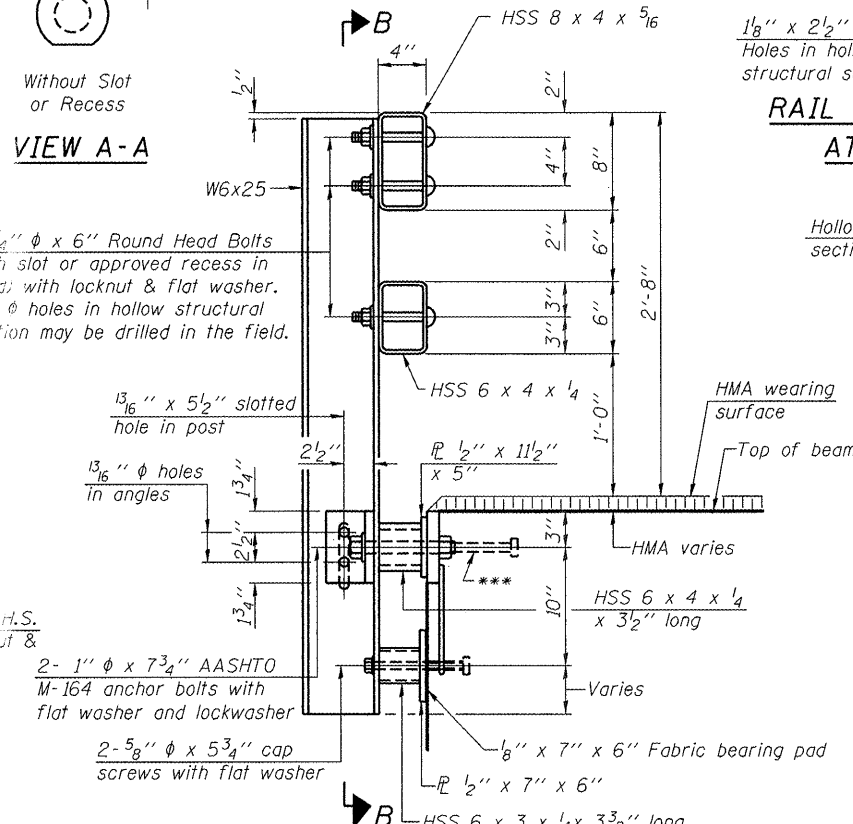


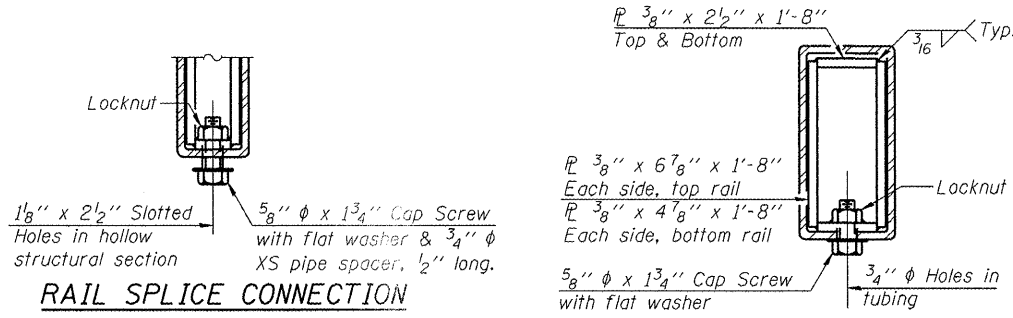
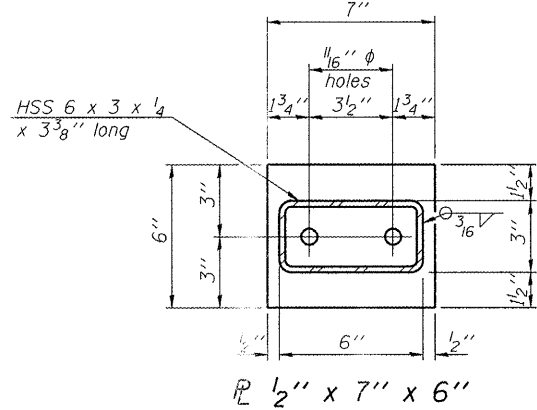
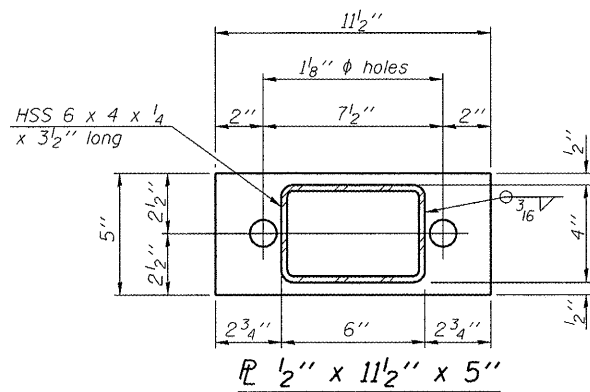
SECTION B-B



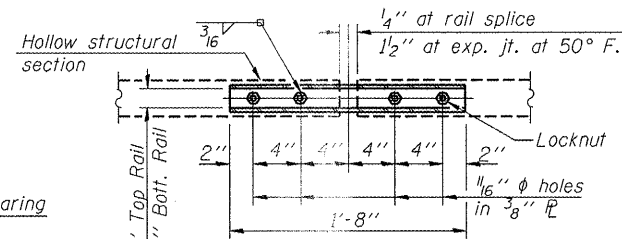
SECTION C-C



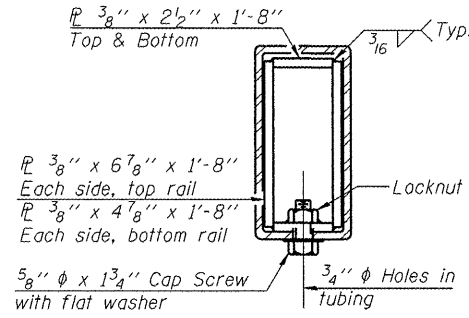
SECTION AT RAIL POST



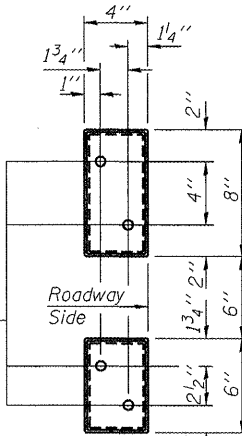
RAIL SPLICE CONNECTION AT EXPANSION JT.



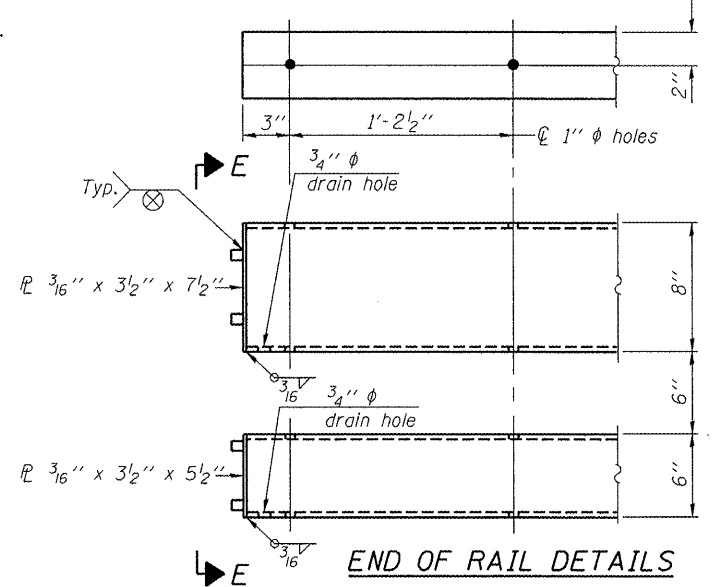
PLAN-BOTT. SPLICE P TYPICAL



SECTION AT RAIL SPLICE

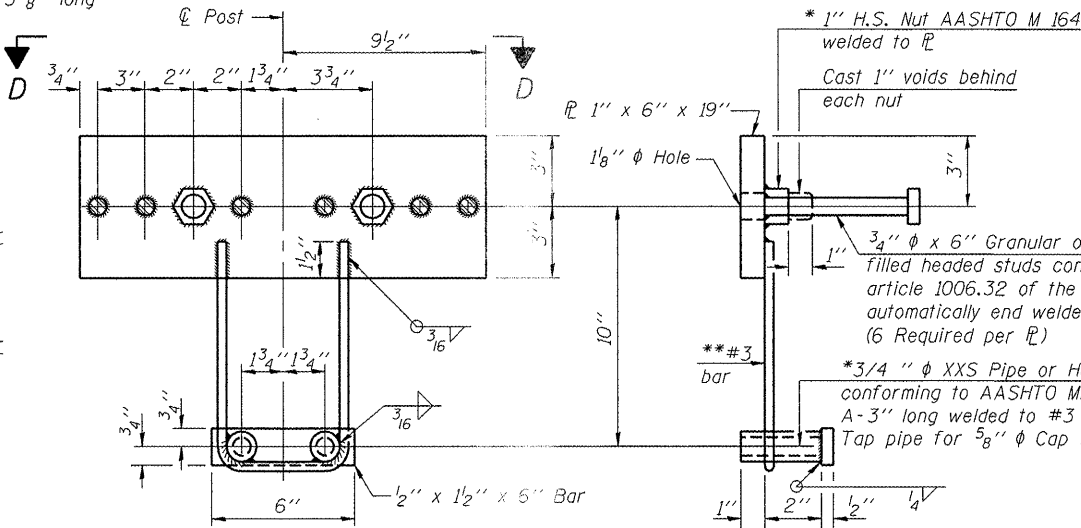


VIEW E-E



END OF RAIL DETAILS

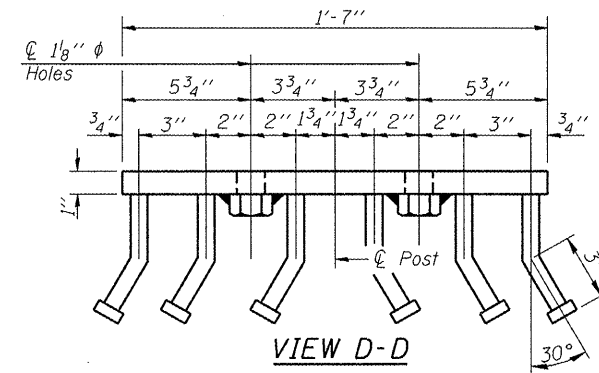
Notes:  
 All field drilled holes shall be coated with an approved zinc rich paint before erection.  
 For multi-span bridges, sufficient 1/4" x 6" x 1'-2" galvanized steel shims shall be provided to align rail between adjacent spans. Cost included with Steel Railing, Type SM.  
 All steel rail members shall be galvanized according to Article 509.05 of the Standard Specifications.  
 \*\*\*The studs of the anchor device shall be placed below the top reinforcement bars and the outermost longitudinal reinforcement bar shall be placed directly above the studs of the rail post anchor device.



ANCHOR DEVICE

\*Threaded areas shall be plugged or blocked off during casting of beam. Galvanized after fabrication.

\*\*Whenever the lower insert assemblies interfere with strand locations, the #3 bars shall be cut and adjusted in order to allow raising or lowering of the lower inserts. Maximum adjustment not to exceed 1/2".



VIEW D-D

BILL OF MATERIAL

Item	Unit	Quantity
Steel Railing, Type SM	Foot	205

STEEL RAILING, TYPE SM  
 BLUFF ROAD OVER  
 PRAIRIE DU ROCHER CRK.  
 SN 079-3072

DESIGNED ASW
CHECKED BWP
DRAWN ASW
CHECKED BWP

R-34HMAWS 05-16-08

(16'-3" Maximum Post Spacing) (1/4" minimum to 3/8" maximum HMA thickness)

**THOUVENOT, WADE & MOERCHEN, INC.**  
 CORPORATE OFFICE  
 4940 Old Collinsville Road  
 Swansea, Illinois 62226  
 Tel: 618.624.4488  
 Fax: 618.624.6688  
 SWANSEA • WATERLOO • EDWARDSVILLE • CARBONDALE • ST. CHARLES



SHEET NO. 5	F.A.S. RTE.	SECTION	COUNTY	TOTAL SHEETS	SHEET NO.
	1857	99-00073-00-BR	RANDOLPH	11	9
7 SHEETS	CONTRACT NO. 97363		FED. ROAD DIST. NO. [ILLINOIS] FED. AID PROJECT		