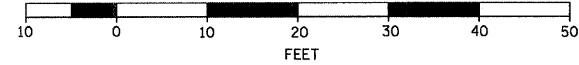


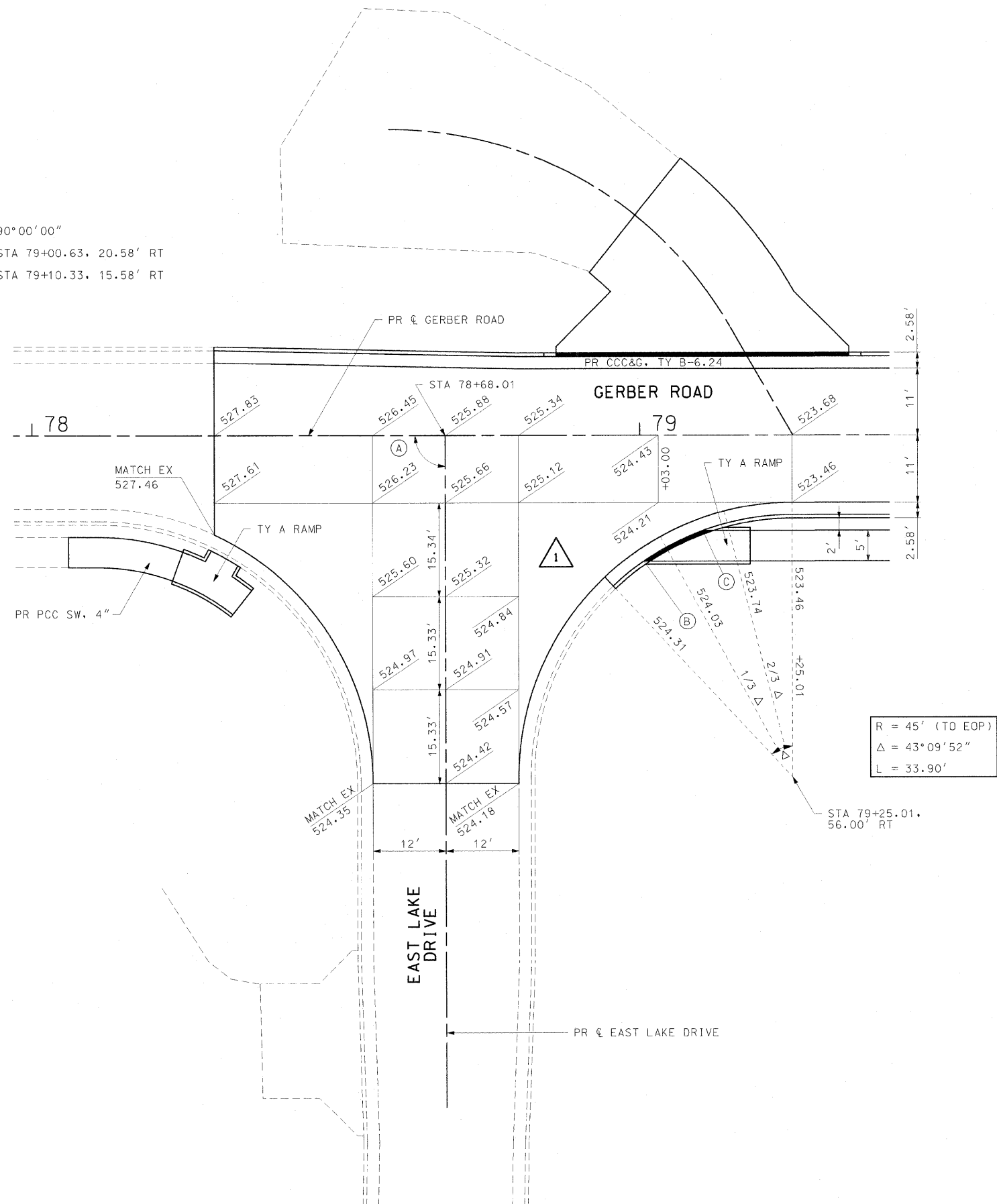
F.A.U. RTE.	SECTION	COUNTY	TOTAL SHEETS	SHEET NO.
8894	05-00073-01-PV	MADISON	68	30
STA. N.A.		TO STA. N.A.		
FED. ROAD DIST. NO.	ILLINOIS	FEDERAL AID PROJECT		



GRAPHIC SCALE



- (A) 90°00'00"
- (B) STA 79+00.63, 20.58' RT
- (C) STA 79+10.33, 15.58' RT



GERBER ROAD AND EAST LAKE DRIVE



REVISIONS	
NAME	DATE
REVISION #1	2/6/09

ILLINOIS DEPARTMENT OF TRANSPORTATION

INTERSECTION DETAILS

SCALE: VERT. N/A
 HORIZ. 1"=10'
 DATE 11/5/03

DRAWN BY AJK, RJM
 CHECKED BY JWB