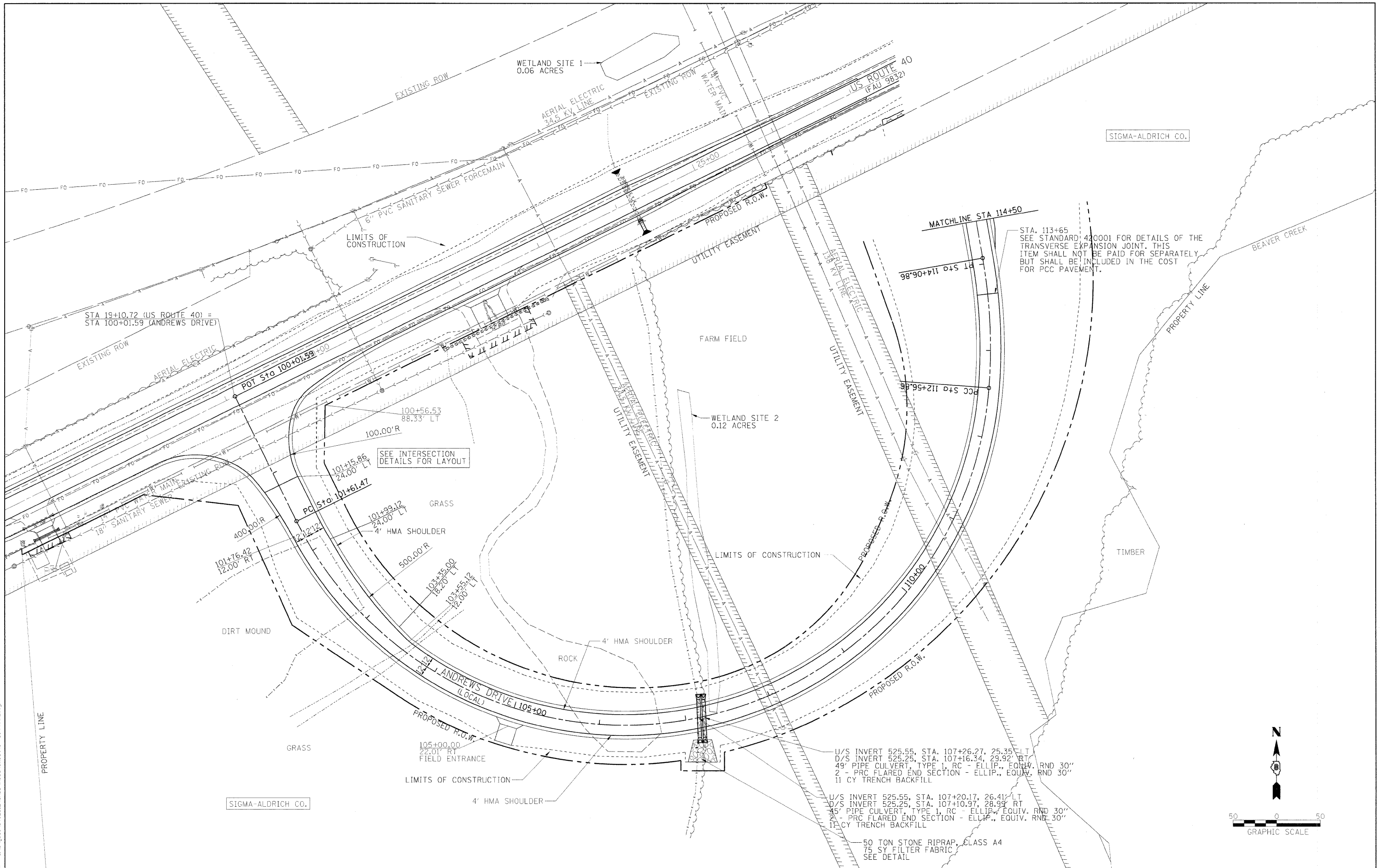


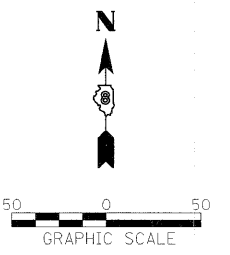
FILE NAME = I:\04_jobs\0452012\CADD\Road\Sigma-ALDRICH\701_P0410.dgn



U/S INVERT 525.55, STA. 107+26.27, 25.35' LT
 D/S INVERT 525.25, STA. 107+16.34, 29.92' RT
 49' PIPE CULVERT, TYPE 1, RC - ELLIP., EQUIV. RND 30"
 2' - PRC FLARED END SECTION - ELLIP., EQUIV. RND 30"
 11 CY TRENCH BACKFILL

U/S INVERT 525.55, STA. 107+20.17, 26.41' LT
 D/S INVERT 525.25, STA. 107+10.97, 28.99' RT
 45' PIPE CULVERT, TYPE 1, RC - ELLIP., EQUIV. RND 30"
 2' - PRC FLARED END SECTION - ELLIP., EQUIV. RND 30"
 11 CY TRENCH BACKFILL

50 TON STONE RIPRAP, CLASS A4
 75 SY FILTER FABRIC
 SEE DETAIL



USER NAME = Pop00036	DESIGNED - DJP	REVISED -
	DRAWN - DJP	REVISED -
PLOT SCALE = 50.0000' / 1"	CHECKED - MH	REVISED -
PLOT DATE = 12/23/2008	DATE -	REVISED -

**STATE OF ILLINOIS
 DEPARTMENT OF TRANSPORTATION**

PROPOSED ANDREWS DRIVE

SCALE: 50 SHEET NO. OF SHEETS STA. 100+00 TO STA. 114+50

F.A. RTE.	SECTION	COUNTY	TOTAL SHEETS	SHEET NO.
	99-00036-00-BR	BOND	99	16
CONTRACT NO. 97366				
FED. ROAD DIST. NO. ILLINOIS FED. AID PROJECT				