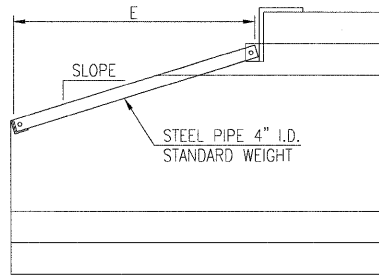
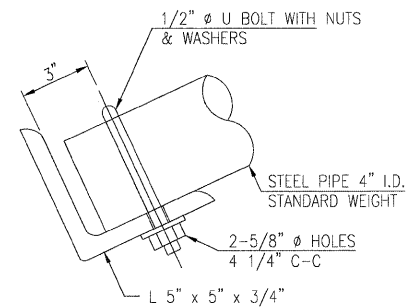


PLAN VIEW

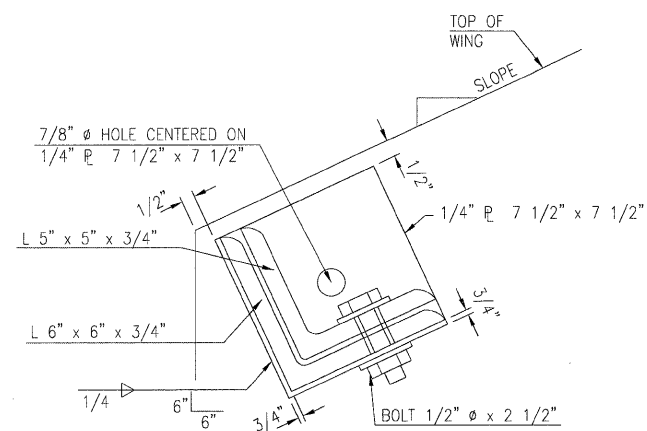


SECTION X-X

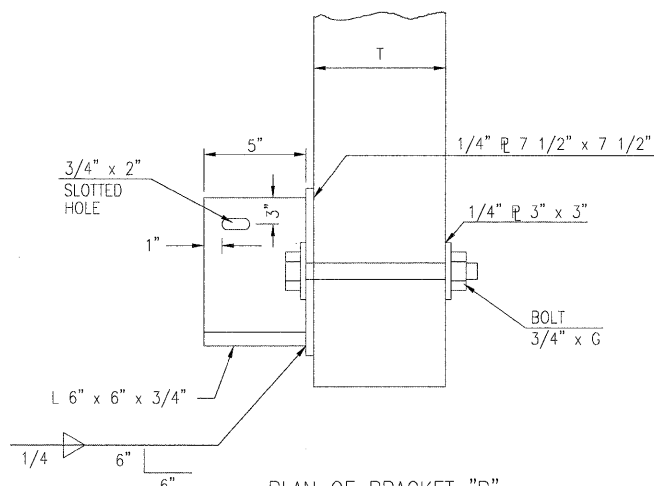
BOX CULVERT SPAN AND RISE	EXT. SPACE C(in)	INT. SPACE D(in)	SLOPE	NO. PIPES REQ'D	LENGTH E(ft)	ANGLE LENGTH F(ft)	BOLT LENGTH G (in)	L (in)	WALL THICK. T (in)
3' x 3'	12"	12"	3:1	2	4'-0"	2'-10"	7"	15 1/8"	4"



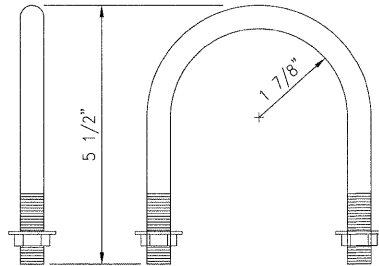
SECTION Z-Z



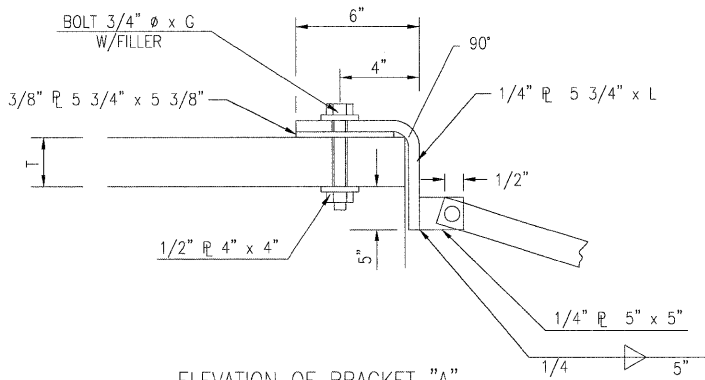
SECTION Y-Y OF BRACKET "B"



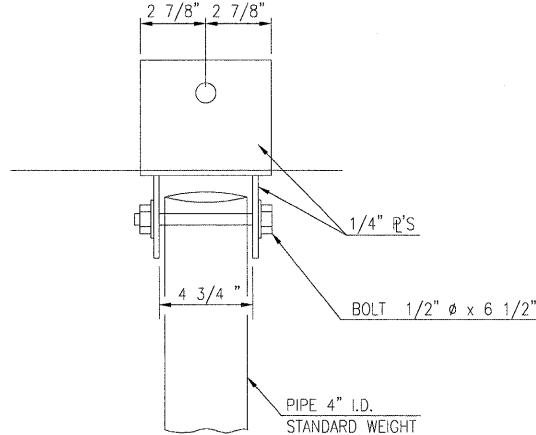
PLAN OF BRACKET "B"



1/2" U BOLT
(1 PER PIPE REQUIRED)



ELEVATION OF BRACKET "A"



PLAN OF BRACKET "A"

GENERAL NOTES

- BOLTS AND NUTS SHALL CONFORM TO A.S.T.M. A307, AND SHALL BE GALVANIZED IN ACCORDANCE WITH A.A.S.H.T.O. M232. ALL BOLTS SHALL HAVE WASHERS AT EACH END. HOLES SHALL BE 2" OVERSIZE UNLESS OTHERWISE NOTED EXCEPT IN CONCRETE WHICH SHALL BE 3/16" OVERSIZE.
- ANGLES AND STEEL PLATES SHALL CONFORM TO A.A.S.H.T.O. M183. STEEL PIPES SHALL CONFORM TO A.S.T.M. A53 GRADE B.
- STEEL PIPES, ANGLES AND PLATES SHALL BE GALVANIZED IN ACCORDANCE WITH A.A.S.H.T.O. M-111.
- THE APPROXIMATE WEIGHT OF STEEL IS LISTED ABOVE. THIS TOTAL INCLUDES PLATES, ANGLES AND PIPES. BOLTS, NUTS AND WASHERS ARE NOT INCLUDED. THE CONTRACTOR SHALL VERIFY THE PIPE LENGTHS AND HOLE LOCATIONS PRIOR TO CUTTING THE PIPES TO LENGTH OR DRILLING HOLES.
- GRATING FOR THE PRECAST END SECTION WILL BE PAID FOR AT THE CONTRACT UNIT PRICE EACH FOR "GRATING FOR BOX CULVERT, LOCATION 1" WHICH PRICE SHALL INCLUDE FABRICATION, GALVANIZING AND INSTALLATION OF THE GRATING AS DETAILED.

USER NAME = Pop00836	DESIGNED - MH	REVISED -
	DRAWN - DJP	REVISED -
PLOT SCALE = 1:0000	CHECKED - MH	REVISED -
PLOT DATE = 12/23/2008	DATE -	REVISED -

STATE OF ILLINOIS
 DEPARTMENT OF TRANSPORTATION

DRAINAGE DETAILS

SCALE: 50	SHEET NO.	OF	SHEETS	STA.	TO STA.
-----------	-----------	----	--------	------	---------

F.A. RTE.	SECTION	COUNTY	TOTAL SHEETS	SHEET NO.
	99-00036-00-BR	BOND	99	32
CONTRACT NO. 97366				
FED. ROAD DIST. NO. ILLINOIS FED. AID PROJECT				