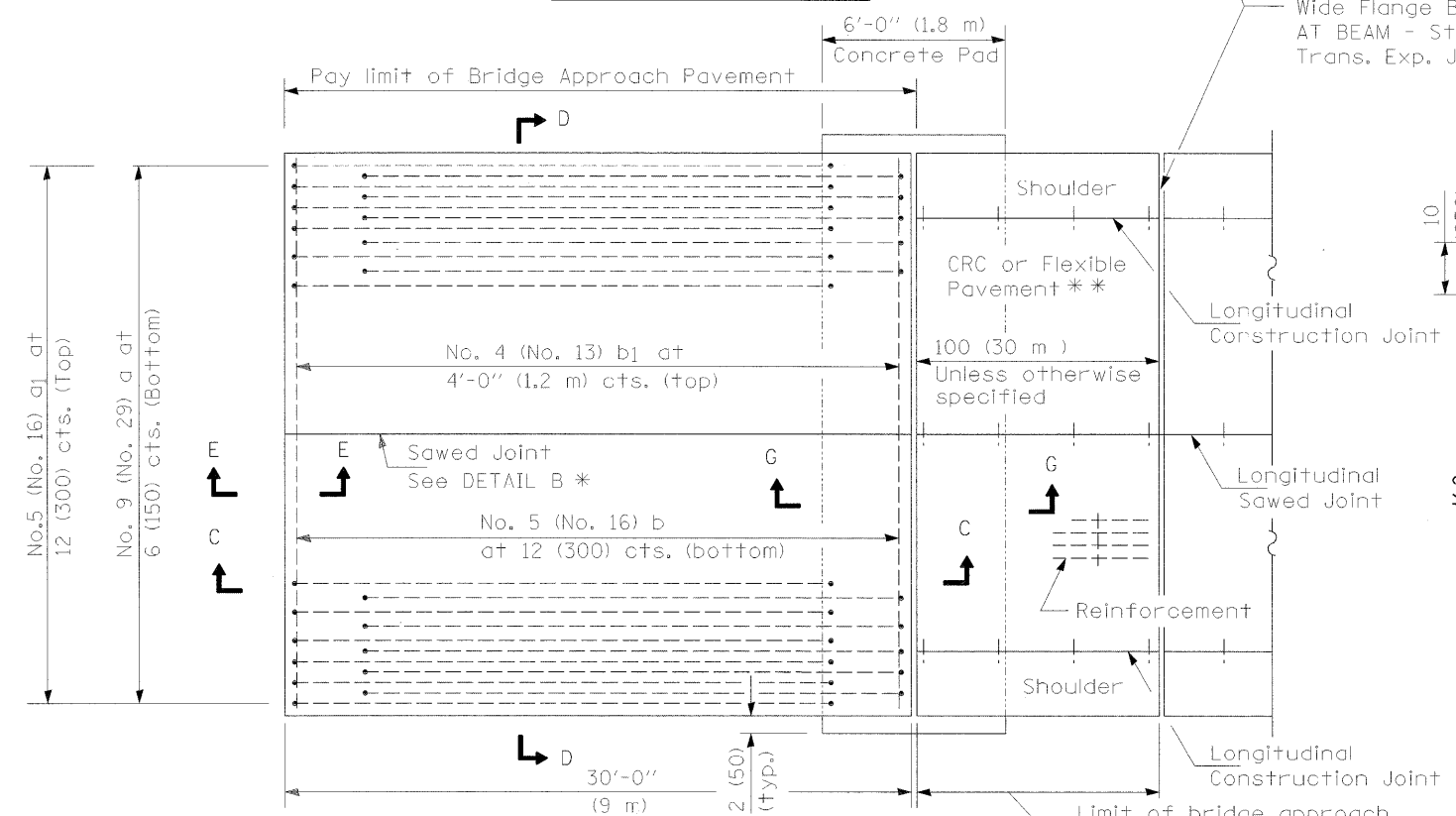


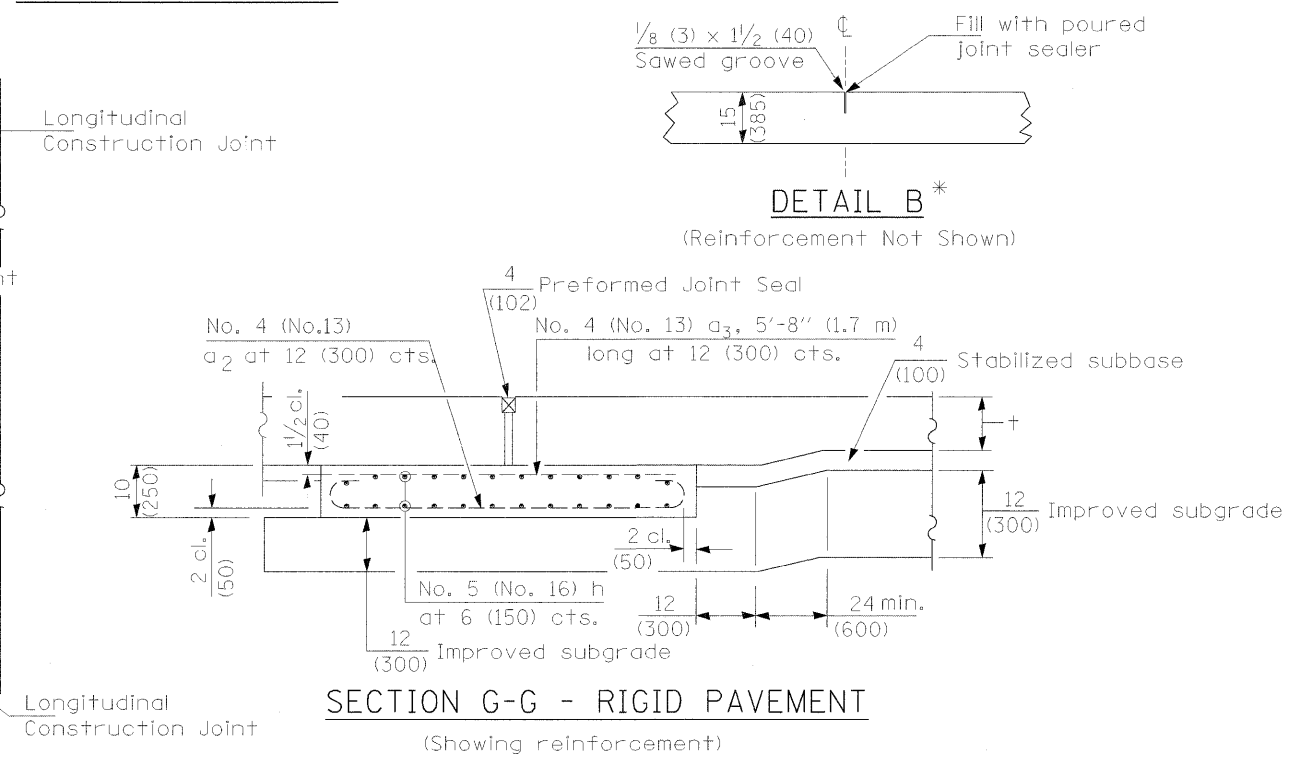
PLAN - WITH SKEW



PLAN - WITHOUT SKEW

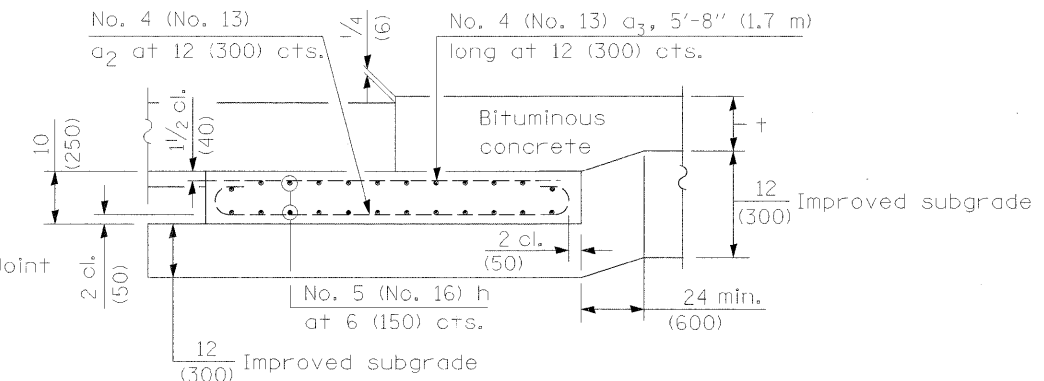
* Saw \perp or lane edge if poured two or more lane widths at a time.
 ** Omit Reinforcement, tie bars and Long. sawed Jt. for Flexible Pavement.

NEW CONSTRUCTION



SECTION G-G - RIGID PAVEMENT
 (Showing reinforcement)

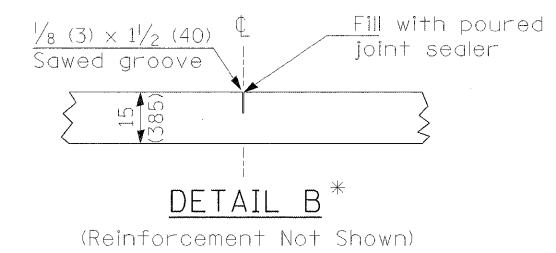
Rigid Pavement only:
 Wide Flange Beam Terminal Joint (See DETAIL AT BEAM - Standard 421101 or 421106) or 2 (50) Trans. Exp. Joint as detailed on Standard 420001.



SECTION G-G - FLEXIBLE PAVEMENT
 (Showing reinforcement)

GENERAL NOTES

THICKNESS-"t"=Thickness of Pavement.
 See Standard 421001 for reinforcement details not shown.
 See Standard 420001 for joint details not shown.
 All dimensions are in inches (millimeters) unless otherwise shown.



DETAIL B*
 (Reinforcement Not Shown)

USER NAME = Pop0036	DESIGNED - MH	REVISED -
DRAWN - DJP	REVISED -	
CHECKED - MH	REVISED -	
DATE - 12/23/2008	REVISED -	

**STATE OF ILLINOIS
 DEPARTMENT OF TRANSPORTATION**

BRIDGE APPROACH PAVEMENT DETAILS			
SCALE: 50	SHEET NO.	OF SHEETS	STA. TO STA.

F.A. RTE.	SECTION	COUNTY	TOTAL SHEETS	SHEET NO.
	99-00036-00-BR	BOND	99	34
CONTRACT NO. 97366				
FED. ROAD DIST. NO. ILLINOIS FED. AID PROJECT				