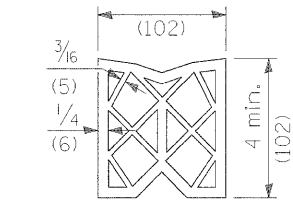
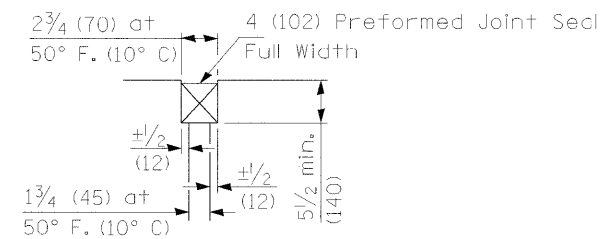


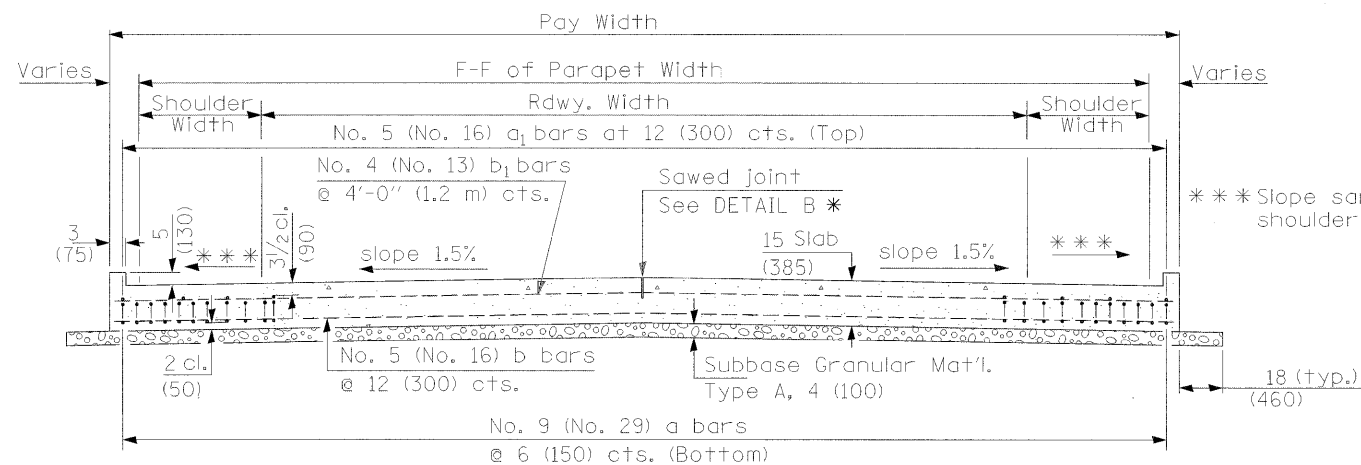
① Stagger No. 9 (No. 29) a bars as shown on plan - full width



PREFORMED JOINT SEAL



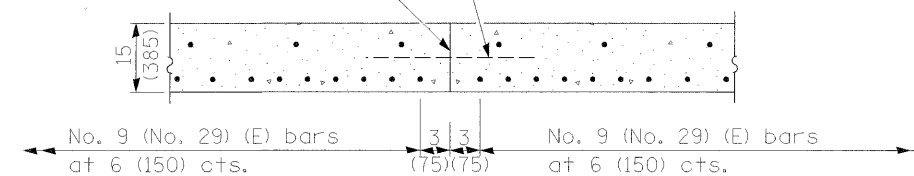
DETAIL A



SECTION D-D

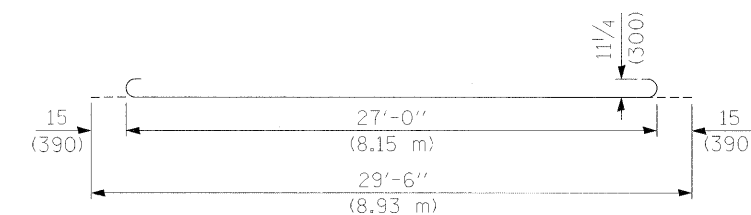
(See Plan for Dimensions not shown)

Longitudinal Construction Joint in accordance with details shown on Standard 420001.

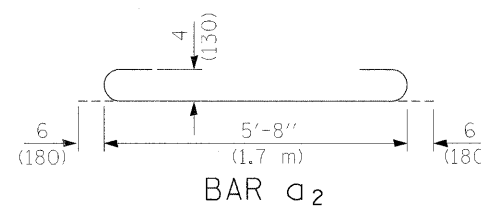


OPTIONAL LONGITUDINAL CONSTRUCTION JOINT

As approved by the Engineer, the Contractor may elect to reduce the widths of pour by use of the Optional Longitudinal Construction Joint shown. Joints shall be located at the edge of a traffic lane.

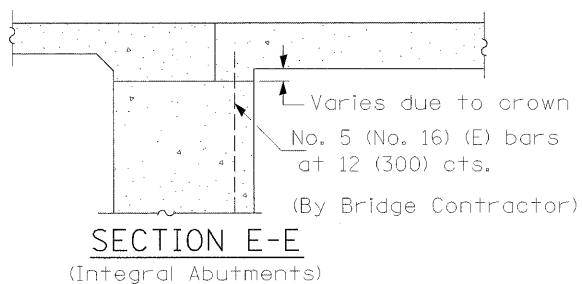


BAR a

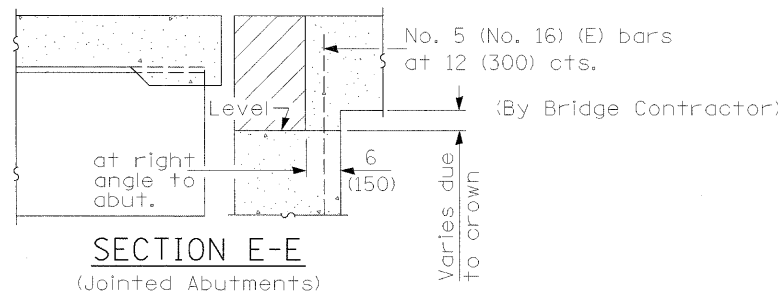


BAR a2

DESIGN STRESSES  
 $f_y = 60,000$  p.s.i. (400 MPa)  
 $f'_c = 3,500$  p.s.i. (24 MPa)  
 $n = 8.5$



SECTION E-E  
(Integral Abutments)



SECTION E-E  
(Jointed Abutments)

USER NAME = Pop0036	DESIGNED - MH	REVISED -
	DRAWN - DJP	REVISED -
PL01 SCALE = 1/8" = 1'-0"	CHECKED - MH	REVISED -
PL01 DATE = 12/23/2008	DATE -	REVISED -

STATE OF ILLINOIS  
 DEPARTMENT OF TRANSPORTATION

BRIDGE APPROACH PAVEMENT DETAILS

SCALE: 50 SHEET NO. OF SHEETS STA. TO STA.

F.A. RTE.	SECTION	COUNTY	TOTAL SHEETS	SHEET NO.
	99-00036-00-BR	BOND	99	36
CONTRACT NO. 97366				
FED. ROAD DIST. NO.	ILLINOIS FED. AID PROJECT			