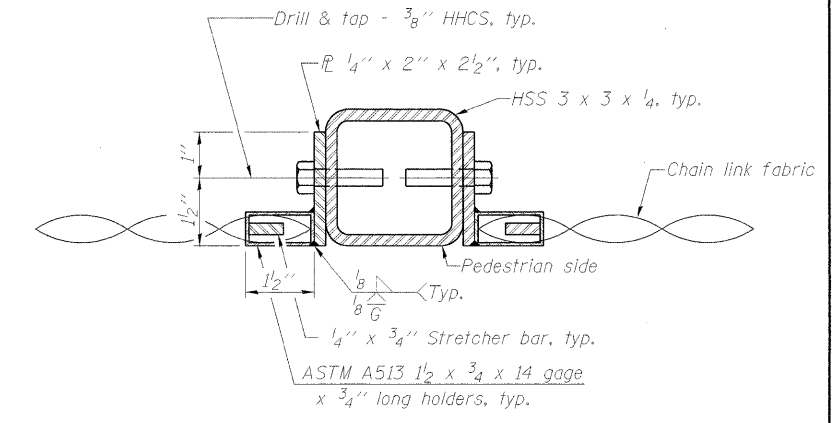
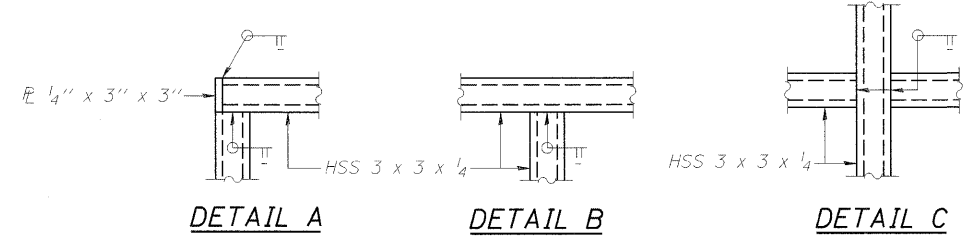
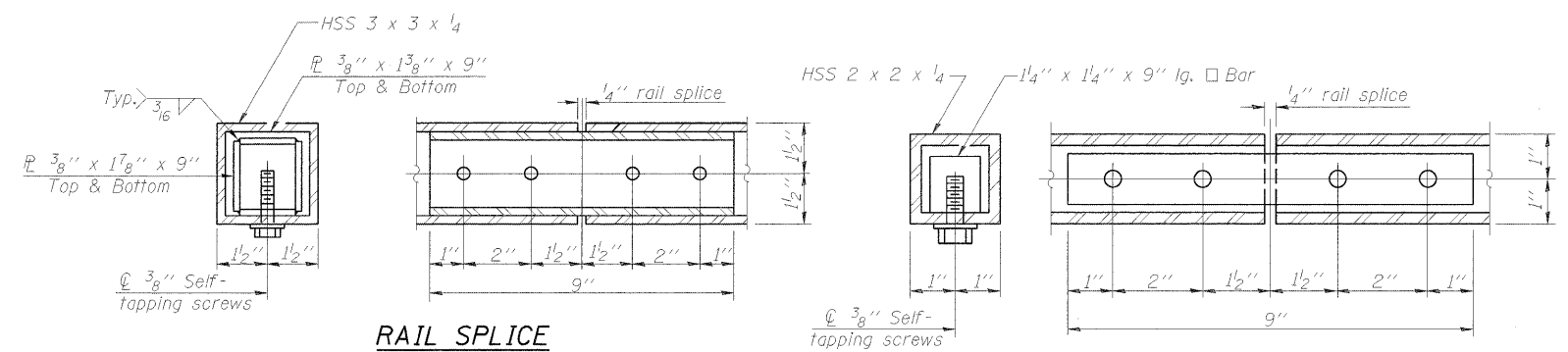


**ELEVATION**  
(Inside Face)

\* Variable- See Sheet 09 of 30.

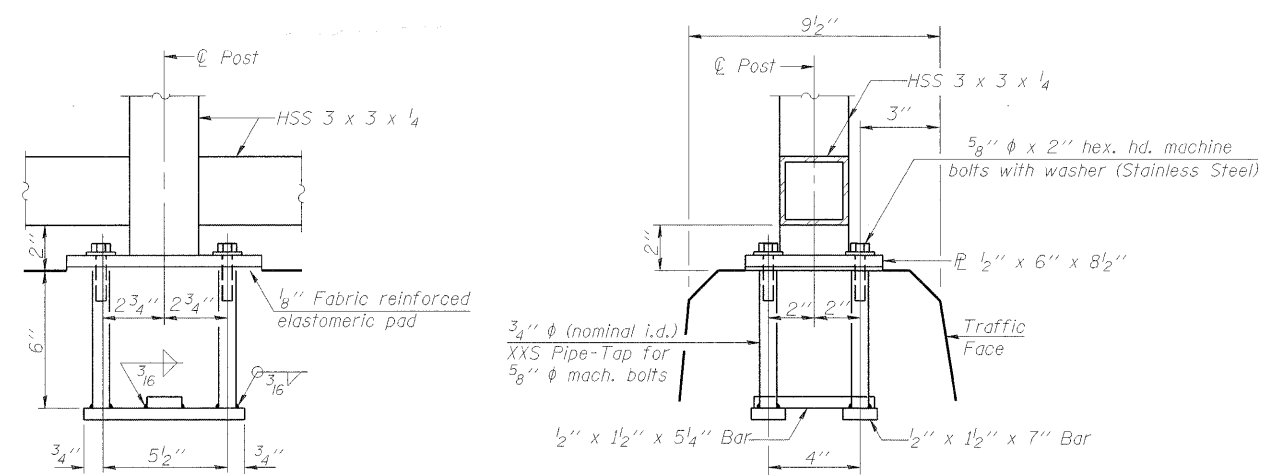


**SECTION A-A**



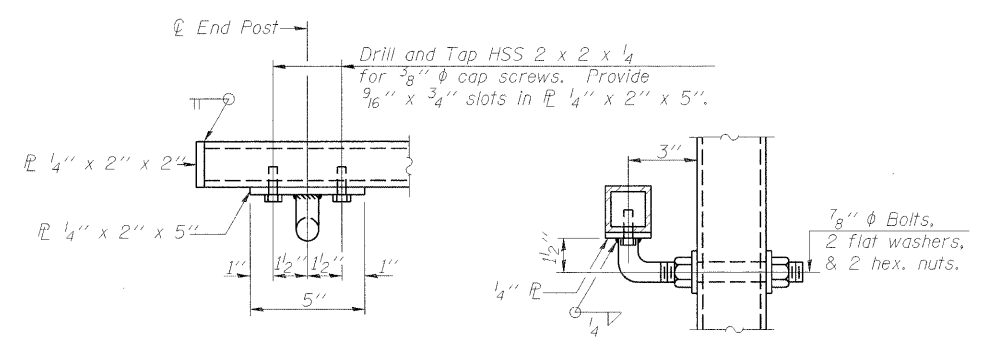
**RAIL SPLICE**

**HANDRAIL SPLICE**

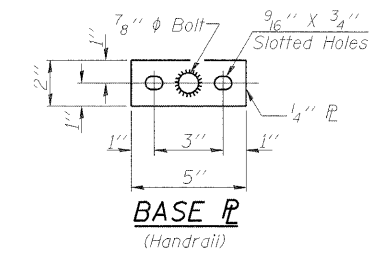


**ANCHOR BOLT DETAILS**

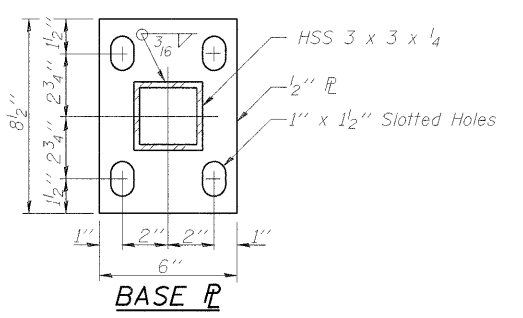
In lieu of the cast-in-place anchor device shown, the Contractor has the option of drilling and setting 5/8" φ anchor rods according to Article 509.06 of the Standard Specifications. Embedment shall be according to the manufacturer's specifications.



**HANDRAIL DETAIL**



**BASE P**  
(Handrail)



**BASE P**

Note:  
All steel rail elements shall be galvanized according to Article 509.05 of the Standard Specifications.

**BILL OF MATERIAL**

Item	Unit	Quantity
Bridge Fence Railing	Foot	340

BRIDGE FENCE RAILING PARAPET MOUNTED  
ANDREWS DRIVE over  
U.S. ROUTE 40 ; CSX RR and IL. WESTERN RR  
SEC. 99-00036-00-BR  
STR. NO. 003-6000  
CITY of GREENVILLE  
RAND COUNTY  
STATION 117+73.00  
PROFESSIONAL DESIGN FIRM LICENSE #184-001084  
© Copyright Hanson Professional Services Inc. 2008

**HANSON**  
Hanson Professional Services Inc.

JOB NO.  
04S2012

DATE  
12/10/08

LAYOUT: MNA 03/07/08  
 DRAWN: DAF 03/07/08  
 REVIEWED: MNA 03/07/08  
 12/23/2008  
 A:\04 jobs\04S2012\CADD\Struct\Sheet\Fence Railing.dgn