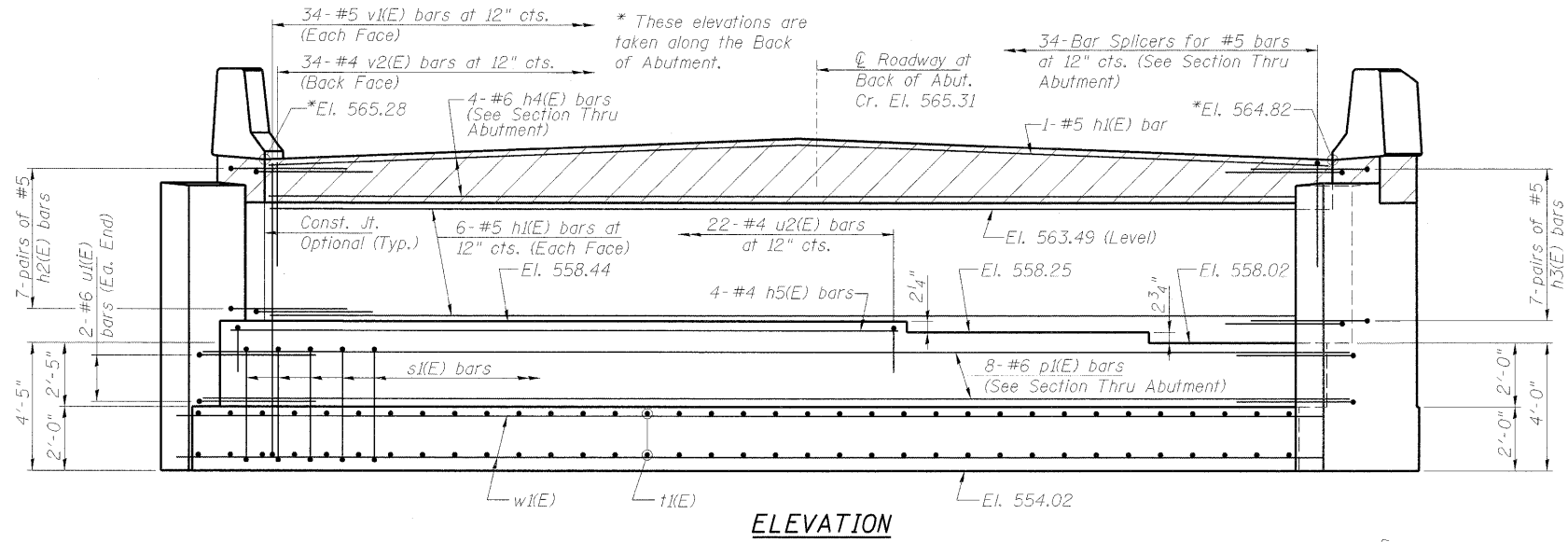


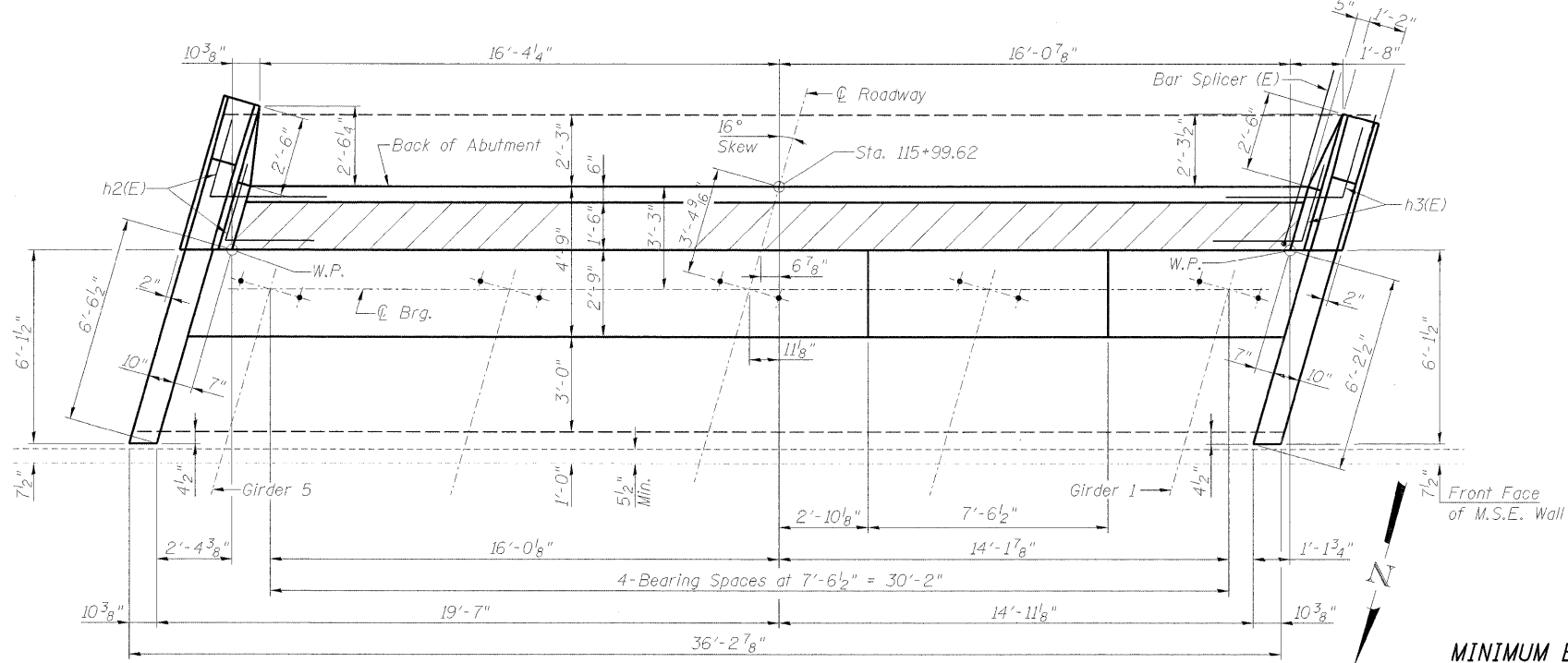
**ANCHOR BOLT LAYOUT**  
(Typical all Girder Locations)

**SOUTH ABUTMENT  
BILL OF MATERIAL**

Bar	No.	Size	Length	Shape	
h1(E)	13	#5	33'-3"	—	
h2(E)	14	#5	6'-3"	└	
h3(E)	14	#5	6'-3"	└	
h4(E)	4	#6	33'-3"	—	
h5(E)	4	#4	21'-2"	—	
h6(E)	9	#5	10'-5"	—	
h7(E)	9	#5	11'-1"	—	
h8(E)	18	#5	8'-0"	—	
h9(E)	22	#5	4'-4"	—	
h10(E)	6	#5	4'-0"	—	
h11(E)	6	#5	4'-6"	—	
n1(E)	60	#5	5'-2"	—	
p1(E)	8	#6	35'-10"	—	
s1(E)	35	#5	16'-9"	—	
t1(E)	72	#5	9'-8"	—	
u1(E)	4	#6	12'-0"	—	
u2(E)	22	#4	7'-11"	—	
v1(E)	68	#5	11'-2"	—	
v2(E)	34	#4	3'-0"	—	
v3(E)	32	#5	7'-10"	—	
v4(E)	1	#5	9'-9"	—	
v5(E)	14	#5	11'-4"	—	
v6(E)	6	#5	11'-6"	—	
v7(E)	8	#5	11'-5"	—	
w1(E)	22	#5	35'-10"	—	
Concrete Structures				Cu. Yd.	60.7
Reinforcement Bars, Epoxy Coated				Pound	5990
Concrete Sealer				Sq. Ft.	572

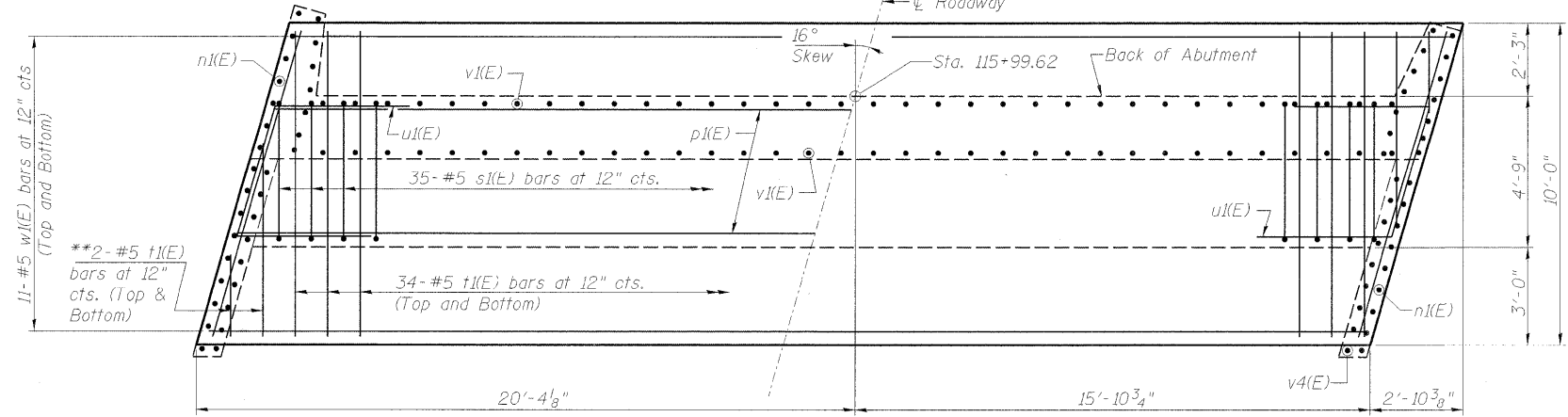


**ELEVATION**



**TOP VIEW**

\*\* Order t1(E) bars full length.  
Cut to fit skew and use remainder of bars in opposite end.



**FOOTING PLAN**

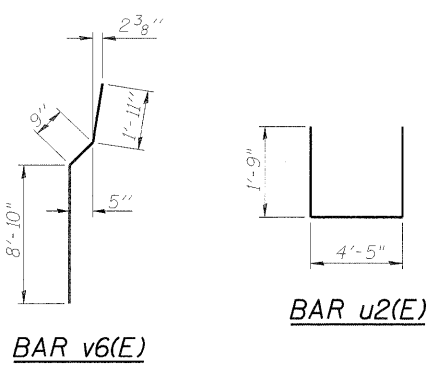
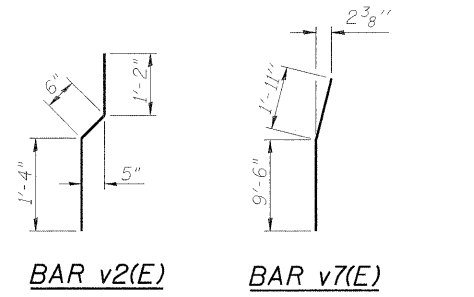
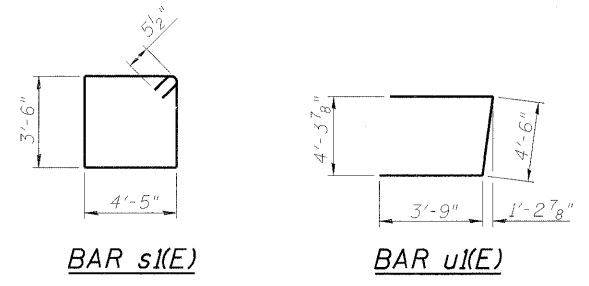
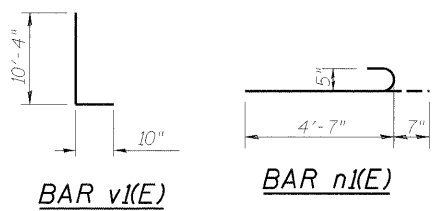
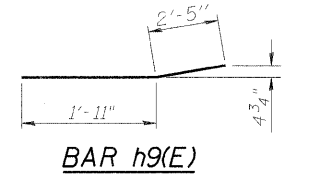
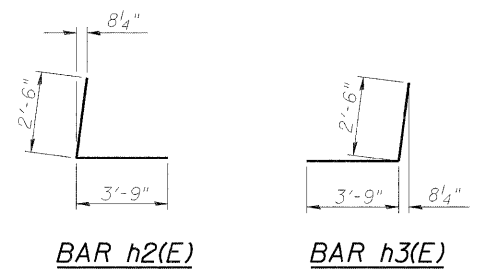
**MINIMUM BAR LAPS**  
#5 bar = 2'-2"  
#6 bar = 2'-7"

Notes:  
For Details of Bar Splicers, see sheet 26 of 30.  
Dimensions are based on a M.S.E. minimum Wall thickness of 5 1/2". If the Contractor elects to use a wall supplier with thicker wall units, the dimensions and reinforcement will require adjustment.

SOUTH ABUTMENT  
ANDREWS DRIVE over  
U.S. ROUTE 40 : CSX RR and IL. WESTERN RR  
SEC. 99-00036-00-BR  
STR. NO. 003-6000  
CITY OF GREENVILLE  
BOND COUNTY  
STATION 117+73.00  
PROFESSIONAL DESIGN FIRM LICENSE #184-001084  
© Copyright Hanson Professional Services Inc. 2008

**HANSON**  
Hanson Professional Services Inc.

JOB NO. 04S2012  
DATE 12/10/08



L:\1011\MMW\03/07/08  
 DRAWN: MMW 03/07/08  
 REVIEWED: MMW 03/07/08  
 12/23/2008  
 A:\04\jobs\0452012\CADD\Struct\Sheet\South Abutment.dgn