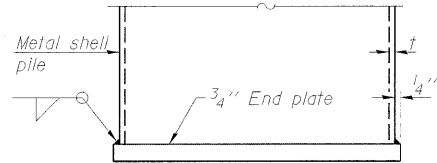
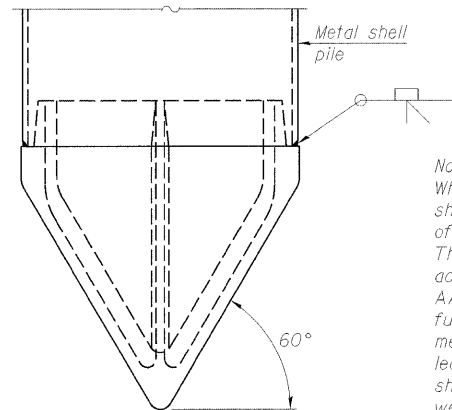


### METAL SHELL PILE TABLE

Designation and outside diameter	Wall thickness <i>t</i>	Weight per Foot (Lbs./ft.)	Inside volume (yd. <sup>3</sup> /ft.)
PP12	0.179"	22.60	0.0274
PP12	0.250"	31.37	0.0267
PP14	0.250"	36.71	0.0368
PP14	0.312"	45.61	0.0361



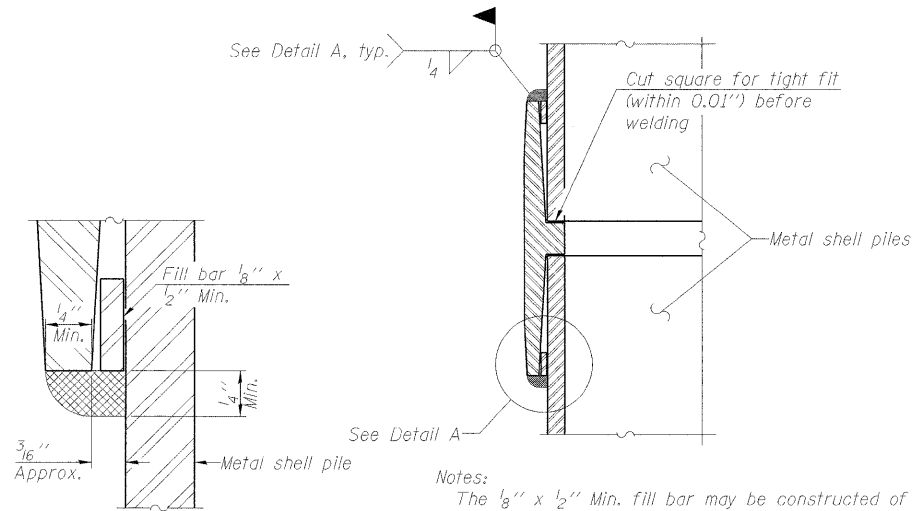
### END PLATE ATTACHMENT



### METAL SHELL PILE SHOE ATTACHMENT

(See Note A)

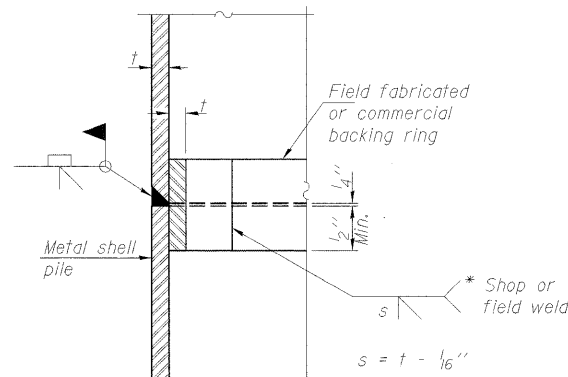
**Note A:**  
When called for on the plans, the Contractor shall furnish metal shell pile shoes consisting of a single piece conical pile point as shown. The pile shoes shall be cast in one piece steel according to either ASTM A 148 Grade 90-60 or AASHTO M 103 Grade 65-35 and shall provide full bearing over the full circumference of the metal shell pile. The pile shoe shall have tapered leads to assure proper alignment and fitting and shall be secured to the pile with a circumferential weld.



### DETAIL A

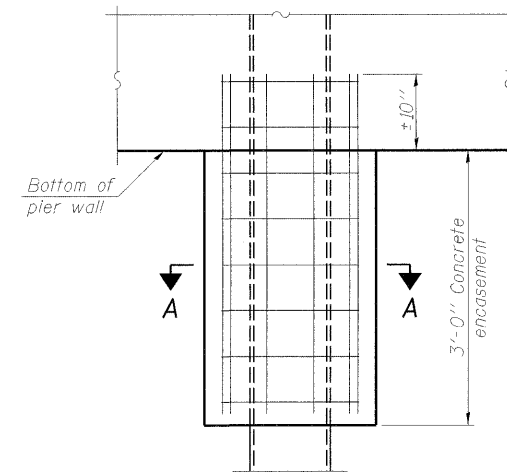
**Notes:**  
The 1/8" x 1/2" Min. fill bar may be constructed of 2 bars with a 1/8" max. gap between them.  
Pile segments shall be driven to solid contact with splicer before welding.

### WELDED COMMERCIAL SPLICE



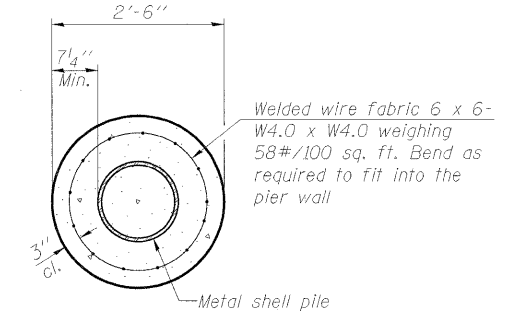
### COMPLETE PENETRATION WELD SPLICE

\* Field fabricated backing ring may be made from pile shell by removing segment to allow reducing circumference and vertically rejoin with partial joint penetration weld.



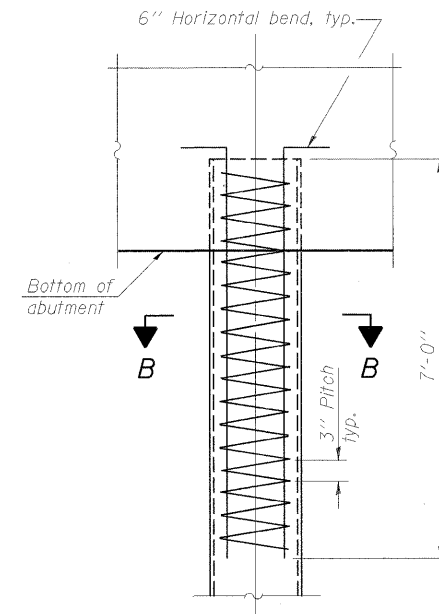
### ELEVATION

### CONCRETE ENCASEMENT AT PIERS



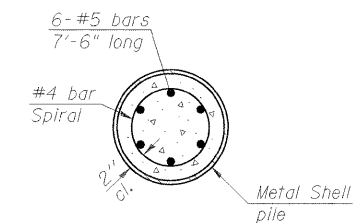
### SECTION A-A

Note: Forms for encasement may be omitted when soil conditions permit.



### ELEVATION

### METAL SHELL REINFORCEMENT AT ABUTMENTS



### SECTION B-B

METAL SHELL PILE DETAILS  
ANDREWS DRIVE over  
U.S. ROUTE 40 : CSX RR and I.L. WESTERN RR  
SEC. 99-00036-00-BR  
STR. NO. 003-6000  
CITY of GREENVILLE  
BOND COUNTY  
STATION 117+73.00  
PROFESSIONAL DESIGN FIRM LICENSE #184-001084  
© Copyright Hanson Professional Services Inc. 2008



JOB NO.

04S2012

DATE

12/10/08

Note: The metal shell piles shall be according to ASTM A 252 Grade 3.

F-MS

5-16-08

LAYOUT: WMM 10/27/08  
 DRAWN: DAP 10/27/08  
 REVIEWED: WMM 10/27/08