

**THOUVENOT,
WADE &
MOERCHEN, INC.**
ENGINEERS ♦ SURVEYORS ♦ PLANNERS



CORPORATE OFFICE

4940 OLD COLLINSVILLE RD.
SWANSEA, ILLINOIS 62226
TEL (618) 624-4488
FAX (618) 624-6688
corp@twm-inc.com

WATERLOO OFFICE

113 SOUTH MAIN STREET
WATERLOO, ILLINOIS 62298
TEL (618) 939-5050
FAX (618) 939-3938
waterloo@twm-inc.com

ST. LOUIS OFFICE

1001 CRAIG ROAD, SUITE 260
ST. LOUIS, MISSOURI 63146
TEL (314) 236-5052
FAX (314) 872-2194
stlouis@twm-inc.com

PROFESSIONAL REGISTRATIONS	LICENSE NO.
ILLINOIS PROFESSIONAL DESIGN FIRM	184-001220
PROFESSIONAL ENGINEERING CORP.	62-035370
PROFESSIONAL STRUCTURAL ENGR. CORP.	61-005202
ILLINOIS PROF. LAND SURVEYING CORP.	048-000029
MISSOURI PROFESSIONAL ENGR. CORP.	NC 001528
MISSOURI LAND SURVEYING CORP.	NC 000346

SEAL

Signature: _____
Signature Date: _____
Expiration Date: _____

STATEMENT OF RESPONSIBILITY

I hereby confirm that the document herein to be authorized by my seal is restricted to this sheet, and I hereby disclaim any responsibility for all other drawings, specifications, estimates, reports or other documents or instruments relating to or intended to be utilized for any other part of the architectural, engineering or survey project.

EXISTING TOPOGRAPHY
AND OVERALL SITE PLAN

CHESTER WELCOME CENTER
CITY OF CHESTER
RANDOLPH COUNTY, ILLINOIS

TITLE:

PROJECT:

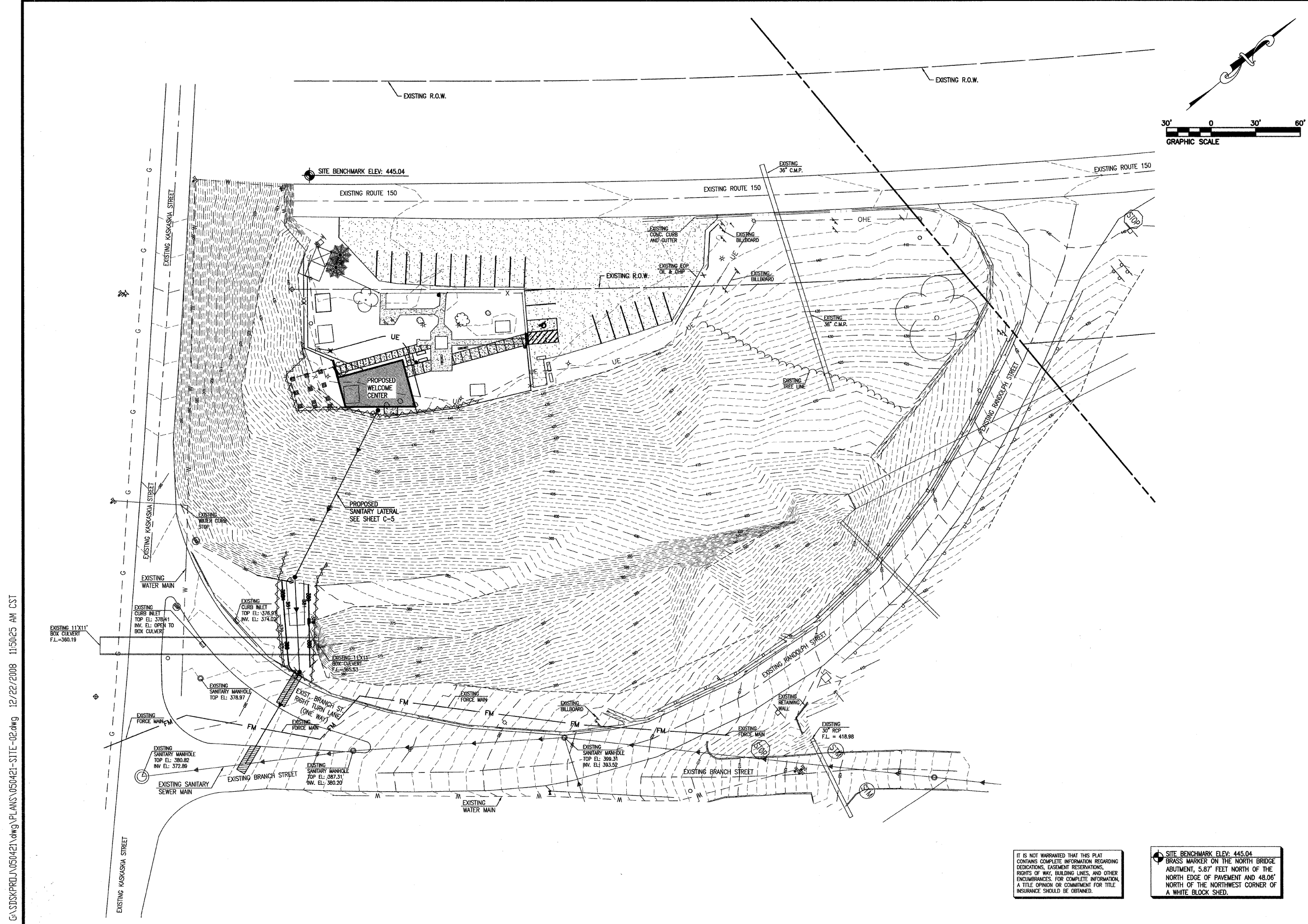
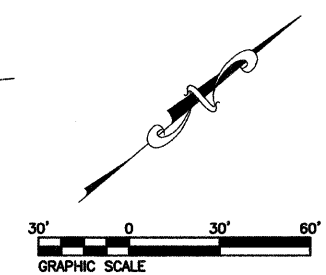
CREATED ON: JANUARY 03, 2007

REV	DATE	DESCRIPTION
1	09/02/08	REVISIONS PER CITY OF CHESTER
2	12/16/08	REVISIONS PER I.D.O.T.

DRAWN BY:	KAK	SHEET
DESIGNED BY:		
CHECKED BY:		
APPROVED BY:		
PROJECT NUMBER	D33050421	OF _____ SHEETS
<input type="checkbox"/> ISSUED FOR REVIEW	<input type="checkbox"/> RECORD DRAWING	

IT IS NOT WARRANTED THAT THIS PLAN CONTAINS COMPLETE INFORMATION REGARDING DEDICATIONS, EASEMENT RESERVATIONS, RIGHTS OF WAY, BUILDING LINES, AND OTHER ENCUMBRANCES. FOR COMPLETE INFORMATION, A TITLE OPINION OR COMMITMENT FOR TITLE INSURANCE SHOULD BE OBTAINED.

SITE BENCHMARK ELEV: 445.04
BRASS MARKER ON THE NORTH BRIDGE ABUTMENT, 5.87' FEET NORTH OF THE NORTH EDGE OF PAVEMENT AND 48.06' NORTH OF THE NORTHWEST CORNER OF A WHITE BLOCK SHED.



G:\SDSK\PROJ\050421\dwg\PLANS\050421-SITE-02.dwg 12/22/2008 11:50:25 AM CST