

PLUMBING NOTES

PLUMBING FIXTURE SCHEDULE

FIXTURE	MFG	MODEL	REMARKS
WC-1 ACCESSIBLE TOILET	TOTO OR APP. EQUIV.	DRAKE CST1445L 1.6GPF LOW CONSUMPTION	ACCESSIBLE ELONGATED WHITE WITH OPEN FRONT RESIN SEAT (TYPE 1). PROVIDE GRAB BARS.
UR-1 URINAL	TOTO OR APP. EQUIV.	UT44TV LOW CONSUMPTION TOP WASHOUT URINAL	ACCESSIBLE URINAL UNIT WITH TOTO T-MINNC-22 FLUSH VALVE. MOUNT FIRST UNIT @ 1'-5" MAX A.F.F. WITH "JAY R. SMITH" HANGER.
LAV-1 LAVATORY	DUPONT CORIAN	24" DEEP CORIAN COUNTER WITH CORIAN MODEL 810 ADA UNDERMOUNT BOWL WITH FRONT OVERFLOW. COLOR TO BE PRICE GROUP 'D' OR LESS.	POSITION BOWL. ADA LOCATION PER MANUFACTURER'S INSTRUCTION. PROVIDE INTEGRAL BACKSPASH 4 ADDED SIDESPASH. COUNTER AND BOWL COLOR AND PATTERN TO BE SELECTED. AUTOMATIC SENSER FAUCET. SLOAN 9F-2150 TRANSFORMER POWERED WITH BATTERY BACK UP, CHROME FINISH SCALD PROTECTION ON WATER SUPPLY INSULATE DRAIN 4 SUPPLY LINES WITH "TRUE BRO HANDILAV". VERIFY DIMENSION IN FIELD BEFORE ORDERING.
S-1 SINGLE BOWL SINK	DUPONT CORIAN	25" DEEP CORIAN COUNTER WITH CORIAN MODEL 804 UNDERMOUNT SINK. COLOR TO BE PRICE GROUP 'D' OR LESS.	PROVIDE INTEGRAL BACKSPASH 4 ADDED SIDESPASH. COUNTER AND BOWL COLOR AND PATTERN TO BE SELECTED. ADA COMPLIANT DELTA 181 FAUCET WITH CHROME FINISH. SCALD PROTECTION ON WATER SUPPLY INSULATE DRAIN 4 SUPPLY LINES WITH "TRUE BRO HANDILAV".
MS-1 MOP SINK	FIAT OR APP. EQUIV.	MSB2424	PROVIDE FIAT '830-AA' SERVICE FAUCET, W/ VACUUM BREAKER, INTEGRAL STOPS, ADJUSTABLE WALL BRACE, 3/4" HOSE THREAD AND '832-AA HOSE OR APPROVED EQUIV.
EWC ELEC. WATER COOLER	ELKAY	EZTL8C	TWO STATION WALL MOUNT BARRIER FREE WATER COOLER WITH CONTROLS ON FRONT ONLY.
WCO WALL CLEAN OUT	JOSAM OR APP. EQUIV.	58T10 SERIES	ROUND STAINLESS STEEL ACCESS COVER
FCO FLOOR CLEAN OUT	JOSAM OR APP. EQUIV.	56000 SERIES	
FD FLOOR DRAIN	JOSAM OR APP. EQUIV.	30000 SERIES WITH STRAINER	PROVIDE SATIN FINISH BRONZE TOP STRAINER
HWH HOT WATER HEATER	BRADFORD WHITE OR APP. EQUIV.	M-1-20L6D5	ENERGY SAVER ELECTRIC-LOWBOY WITH 19 GAL CAPACITY. 20 GPH RECOVERY AT 90°F RISE. ADD EXPANSION TANK AND TAP VALVE. 240 VOLT ELEMENT WITH 30 AMP BREAKER. PROVIDE DRAINAGE PAN
HB HOSE BIB RECESSED	WOODFORD	B65	ANTI-SIPHON, AUTOMATIC DRAINED FREEZELESS RECESSED WALL HYDRANT. CHROME FINISH.
WT WATER TANK	GOULD HYDRO PRO	#0490-055	65 GALLON DIAPHRAGM PRESSURE TANK WITH STAND #V200

- P1. THESE DRAWINGS ARE SCOPE DOCUMENTS. PLUMBING CONTRACTOR SHALL PROVIDE A COMPLETE, CODE-COMPLIANT SYSTEM WITH ALL MATERIALS, LABOR, FITTINGS, AND TRIM. REVIEW DRAWINGS AND NOTIFY ARCHITECT IMMEDIATELY OF AREAS OF CONCERN OR CONFLICT. WHERE OWNER-SUPPLIED FIXTURES ARE NOTED (IF ANY), CONTRACTOR SHALL PROVIDE ALL NECESSARY PIPING CONNECTIONS INCLUDING TAIL PIECES AND TRAPS. UNLESS NOTED OTHERWISE, NEW PLUMBING FIXTURES INCLUDING WATER HEATER, ARE PROVIDED BY THE CONTRACTOR.
- P2. CONTRACTOR SHALL VERIFY THE CONDITION AND SPACE FOR THE INSTALLATION OF WORK. MAKE ALL NECESSARY ROUTING, FITTING, AND CONNECTIONS AS REQUIRED FOR A COMPLETE SYSTEM.
- P3. THIS BUILDING, LESS THAN 5,000 SQ. FEET IS NOT REQUIRED TO HAVE A DRINKING FOUNTAIN PER IPC 809.010-0241. IF THE OWNER REQUESTS A DRINKING FOUNTAIN, IT MUST BE PHYSICALLY ACCESSIBLE.
- P4. THE DRINKING FOUNTAIN MUST BE A HIGH/LOW ACCESSIBLE UNIT.
- P5. ALL PLUMBING WORK TO CONFORM TO APPLICABLE CODES AND REGULATIONS INCLUDING, BUT NOT LIMITED TO THE ILLINOIS PLUMBING CODE AND THE ILLINOIS ACCESSIBILITY CODE.
- P6. WATER SUPPLY AND SEWER SYSTEMS ARE PROVIDED BY AND INSTALLATIONS MUST CONFORM WITH THEIR REGULATIONS AND STANDARD PROCEDURES.
- P7. PROVIDE COMPLETE NEW DOMESTIC WATER DISTRIBUTION SYSTEM INSIDE BUILDING INCLUDING HOT WATER PIPING, COLD WATER PIPING, DOMESTIC HOT WATER HEATER INSULATION AND ALL NECESSARY SHUTOFF VALVES. ANY UNDERGROUND WATER SERVICE PIPE SHALL BE TYPE "K" COPPER PER ALL APPLICABLE CODES.
- P8. PROVIDE DIELECTRIC FITTING AND SEPARATION BETWEEN TWO DISSIMILAR METALS.
- P9. PROVIDE SHUT-OFF VALVES TO FACILITATE CONTINUED OCCUPANCY OF THE INDEPENDENT OF PROJECT AREA.
- P10. ALL BRANCH PIPING SHUT-OFF VALVES TO BE 125 LB. BALL TYPE.
- P11. ALL HOT AND COLD WATER LINES TO BE TYPE K (UNDERGROUND) AND TYPE L (EXPOSED) COPPER WITH LEAD-FREE SWEATED FITTINGS. REMOVE ALL (IF ANY) LEAD WATER LINES AND REMOVE ALL EXPOSED OR ACCESSIBLE GALVANIZED WATER SUPPLY LINES.
- P12. ROD EXISTING SEWER LINES TO STREET BEFORE ADDING TO OR REVISING THE SYSTEM. PROVIDE A CLEAN-OUT AT THE BASE OF THE VERTICAL STACK IF ONE DOES NOT EXIST.
- P13. PROVIDE ANTI-SCALD PROTECTION ON ALL FAUCETS.
- P14. PROVIDE AT LEAST ONE MAIN VENT STACK EXTENDING THROUGH ROOF. ROD EXISTING IF NECESSARY TO CREATE PROPERLY FUNCTIONING SYSTEM.
- P15. PROVIDE STAINLESS STEEL GRAB BARS AND FRAMED MIRROR IN EACH TOILET ROOM, INSTALLED PER ILLINOIS ACCESSIBILITY CODE AND ANSI A117.1.
- P16. TOILETS TO BE ACCESSIBLE WITH OPEN FRONT SEATS. LAVATORY FAUCETS TO BE ACCESSIBLE UNITS MOUNTED ON WALL HUNG LAVATORIES, MOUNTED AT ACCESSIBLE HEIGHT. INSULATE WASTE AND SUPPLY LINES BENEATH LAV TO PROTECT LEGS FROM SCALDS OR CUTS WITH "TRUEBRO" UNITS OR EQUAL.
- P17. INSULATE ALL HOT WATER LINES AND HORIZONTAL COLD WATER LINES WITH 1/2" THICK INSULATION. LOCATE ALL WATER LINES WITHIN THE TEMPERED SPACES OF THE BUILDING. DO NOT RUN WATER LINES ABOVE THE BUILDING INSULATION LEVEL.
- P18. PROVIDE BACKFLOW PREVENTERS, AIR CHAMBERS, AIR GAPS, ETC. AS REQUIRED BY ILLINOIS PLUMBING CODE AND AS INDICATED ON THE DRAWINGS.
- P19. ALL GAS PIPING TO BE SCHEDULE 40 BLACK STEEL PIPE WITH MINIMUM OF 12 P816 FITTING. PROVIDE A SHUT-OFF WITHIN 42" OF EACH APPLIANCE.
- P20. TESTING AND GUARANTEE: CONTRACTOR SHALL START-UP, CHECK, AND ADJUST SYSTEMS FOR PROPER OPERATION. TESTING SHALL BE PERFORMED BEFORE APPLYING INSULATION. FLUSH AND/OR STERILIZE WATER PIPING AS REQUIRED BY LOCAL CODE. CONTRACTOR TO GUARANTEE THEIR WORK (BOTH LABOR AND MATERIALS) TO BE FREE OF DEFECTS FOR ONE YEAR.
- P21. CONTRACTOR TO PUT ALL BOOKLETS, OPERATION INSTRUCTIONS, WARRANTY INFO, PARTS, DIAGRAMS, ETC., IN ONE 3 RING BINDER OR 3 CLIP FOLDER AND GIVE TO OWNER AT COMPLETION OF WORK.
- P22. CONTRACTOR TO PROVIDE ALL TOILETS, SINKS, AND OTHER SCHEDULED PLUMBING FIXTURES NOT SPECIFICALLY LABELED AS PROVIDED BY OTHERS. CONTRACTOR TO PROVIDE ALL TRIM, SHUTOFFS, ETC UNLESS SPECIFICALLY NOTED AS PROVIDED BY OTHERS.
- P23. PROVIDE ALL NECESSARY PIPING CONNECTIONS TO THE OWNER FURNISHED FIXTURES OR EQUIPMENT, INCLUDING ALL TAIL PIECES AND TRAPS.
- P24. METAL ROOF PAN LAYOUT TAKES PRECEDENCE OVER PLUMBING VENT LOCATION. COORDINATE ROOF PENETRATION WITH ROOFING CONTRACTOR.
- P25. PROVIDE WATER CLOSETS WITH FLUSH LEVER ON THE OPEN SIDE OF THE ROOM.
- P26. ALL PUMP PUMP PITS TO HAVE SEALED AIRTIGHT PLASTIC OR POLYCARBONATE LIDS WITH RUBBER COUPLINGS AND A CLEAR VIEW-PORT FOR OBSERVATION.

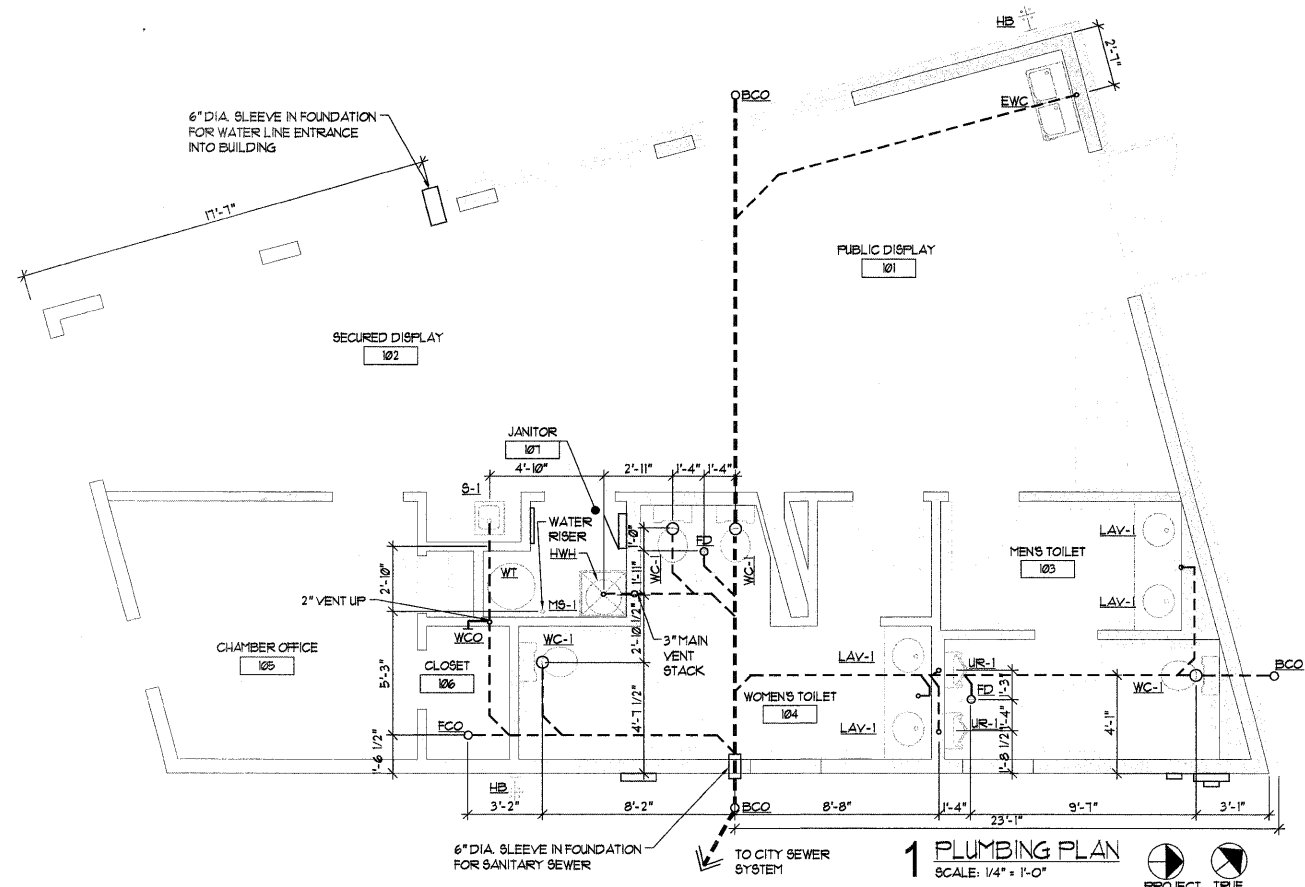
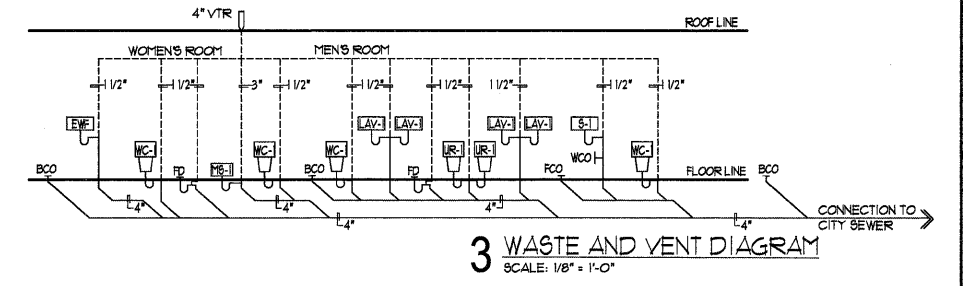
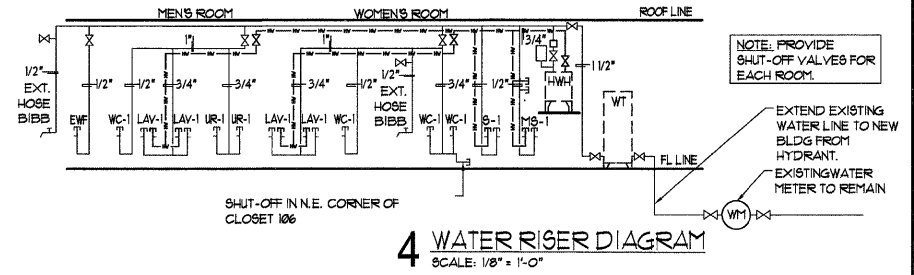
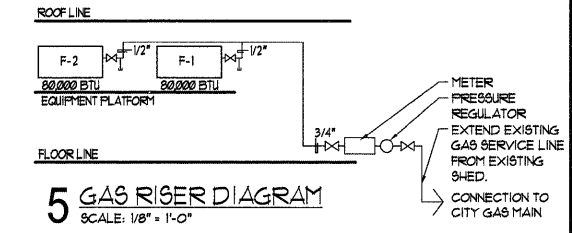
Contract # 97367

GENERAL NOTES

1. NO GENERAL NOTES ON THIS SHEET.

NOTE: PROVIDE SHUT-OFF VALVES FOR EACH ROOM.

NOTE: PROVIDE SHUT-OFF, AND DIRT LEG AT EACH APPLIANCE. ADJUST LINE SIZES IF INSTALLED APPLIANCE BTUS VARY FROM THOSE INDICATED.



Issued	description
01.09.09	IDOT Submittal

PLUMBING PLAN & NOTES

CHESTER WELCOME CENTER

Chester, Illinois

QUADRANT
design
architects & planners

135 south main street
waterloo, illinois 62298
phone 618.939.0606

job number 20525
drawn by JE
checked by MS
file name
scale

sheet **P1.1**