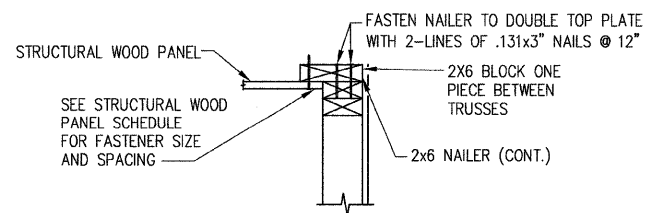
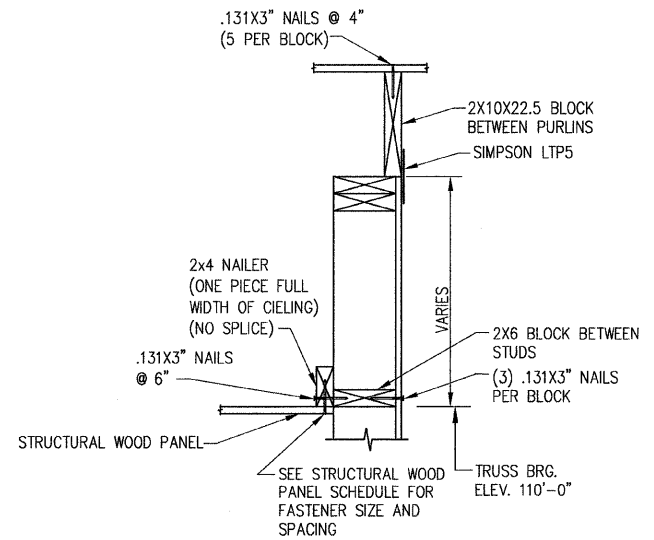
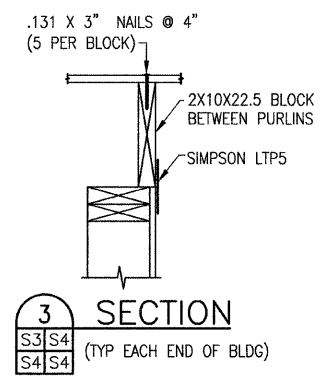
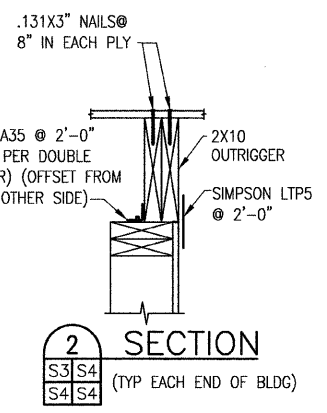
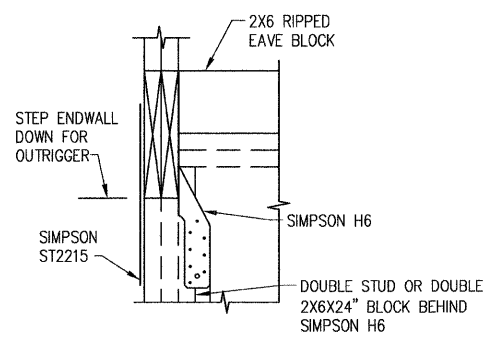


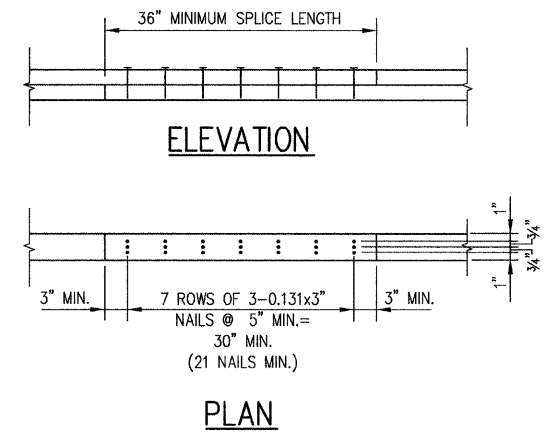
1 SECTION
S3/S4 (TYP EACH END OF BLDG)



5 SECTION
S3/S4



6 SECTION
S3/S4



DOUBLE TOP PLATE SPLICE DETAIL
(MINIMUM CONDITION SHOWN, SPLICE MAY BE LONGER WITH LONGER NAIL SPACINGS WITH TWO LINES OF NAILS THAT TOTAL 21 NAILS WITHIN SPLICE LENGTH)

THOUVENOT, WADE & MOERCHEN, INC.
ENGINEERS • SURVEYORS • PLANNERS



- CORPORATE OFFICE**
4940 OLD COLLINSVILLE RD.
SWANSEA, ILLINOIS 62226
TEL (618) 624-4488
FAX (618) 624-6688
corp@twm-inc.com
- WATERLOO OFFICE**
113 SOUTH MAIN STREET
WATERLOO, ILLINOIS 62298
TEL (618) 939-5050
FAX (618) 939-3938
waterloo@twm-inc.com
- EDWARDSVILLE OFFICE**
1015B CENTURY DRIVE
EDWARDSVILLE, ILLINOIS 62025
TEL (618) 656-4040
FAX (618) 656-4343
edwardsville@twm-inc.com
- ST. LOUIS OFFICE**
1001 CRAIG ROAD, SUITE 260
ST. LOUIS, MISSOURI 63146
TEL (314) 236-5052
FAX (314) 872-2194
stlouis@twm-inc.com

PROFESSIONAL REGISTRATIONS	LICENSE NO.
ILLINOIS PROFESSIONAL DESIGN FIRM	194-001220
PROFESSIONAL ENGINEERING CORP.	62-00570
PROFESSIONAL STRUCTURAL ENGR. CORP.	61-005202
ILLINOIS PROF. LAND SURVEYING CORP.	046-000029
MISSOURI PROFESSIONAL ENGR. CORP.	NC 001528
MISSOURI LAND SURVEYING CORP.	NC 003546

SEAL

Signature: _____
Signature Date: _____
Expiration Date: _____

STATEMENT OF RESPONSIBILITY
I hereby confirm that the document herein to be authorized by my seal is restricted to this sheet, and I hereby disclaim any responsibility for all other drawings, specifications, estimates, reports or other documents or instruments relating to or intended to be utilized for any other part of the architectural, engineering or survey project.

WALL DETAILS

PROJECT: **CHESTER WELCOME CENTER**

REV	DATE	DESCRIPTION
△	12/16/08	REVISIONS PER IDOT COMMENTS
△		
△		

DRAWN BY: DJH	SHEET
DESIGNED BY: DJH	S4
CHECKED BY: KPC	OF 9 SHEETS
APPROVED BY: KPC	PROJECT DESCRIPTION
PROJECT NUMBER: T33050421	

- ISSUED FOR REVIEW
- ISSUED FOR BIDDING
- ISSUED FOR CONSTR.
- RECORD DRAWING