

**THOUVENOT, WADE & MOERCHEN, INC.**  
ENGINEERS • SURVEYORS • PLANNERS



**CORPORATE OFFICE**  
4940 OLD COLLINSVILLE RD.  
SWANSEA, ILLINOIS 62226  
TEL (618) 624-4488  
FAX (618) 624-6688  
corp@twm-inc.com

**WATERLOO OFFICE**  
113 SOUTH MAIN STREET  
WATERLOO, ILLINOIS 62298  
TEL (618) 939-5050  
FAX (618) 939-3938  
waterloo@twm-inc.com

**EDWARDSVILLE OFFICE**  
1015B CENTURY DRIVE  
EDWARDSVILLE, ILLINOIS 62025  
TEL (618) 656-4040  
FAX (618) 656-4343  
edwardsville@twm-inc.com

**ST. LOUIS OFFICE**  
1001 CRAIG ROAD, SUITE 260  
ST. LOUIS, MISSOURI 63146  
TEL (314) 236-5052  
FAX (314) 872-2194  
stlouis@twm-inc.com

PROFESSIONAL REGISTRATIONS LICENSE NO.  
ILLINOIS PROFESSIONAL DESIGN FIRM 184-001220  
PROFESSIONAL ENGINEERING CORP. 02-00370  
PROFESSIONAL STRUCTURAL ENGR. CORP. 01-00502  
ILLINOIS PROF. LAND SURVEYING CORP. 048-00029  
MISSOURI PROFESSIONAL ENGR. CORP. NC 001528  
MISSOURI LAND SURVEYING CORP. NC 00316

SEAL

Signature: \_\_\_\_\_  
Signature Date: \_\_\_\_\_  
Expiration Date: \_\_\_\_\_

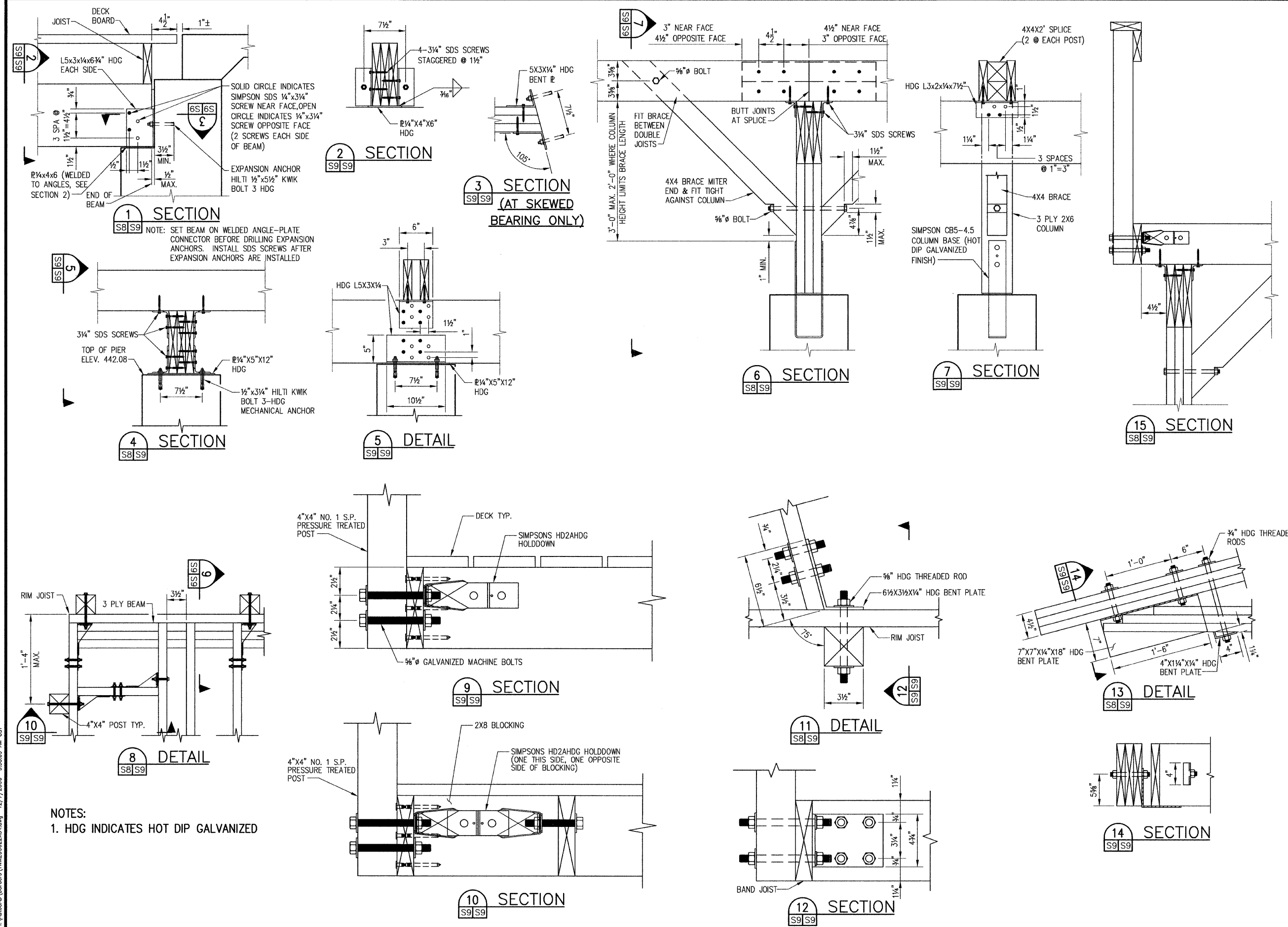
**STATEMENT OF RESPONSIBILITY**  
I hereby confirm that the document herein to be authorized by my seal is restricted to this sheet, and I hereby disclaim any responsibility for all other drawings, specifications, estimates, reports or other documents or instruments relating to or intended to be utilized for any other part of the architectural, engineering or survey project.

TITLE: **DECK FRAMING PLAN DETAILS**  
PROJECT: **CHESTER WELCOME CENTER**

REV	DATE	DESCRIPTION
△	12/16/08	REVISIONS PER IDOT COMMENTS
△		
△		

DRAWN BY: DJH SHEET NO: **S9**  
DESIGNED BY: DJH OF 9 SHEETS  
CHECKED BY: KPC PROJECT DESCRIPTION  
APPROVED BY: KPC  
PROJECT NUMBER: 050421

ISSUED FOR REVIEW  ISSUED FOR BIDDING  
 ISSUED FOR CONSTR.  RECORD DRAWING



NOTE: SET BEAM ON WELDED ANGLE-PLATE CONNECTOR BEFORE DRILLING EXPANSION ANCHORS. INSTALL SDS SCREWS AFTER EXPANSION ANCHORS ARE INSTALLED

NOTES:  
1. HDG INDICATES HOT DIP GALVANIZED

H:\AutoCAD\borderes\TWM20062234.dwg 12/7/2006 9:35:09 AM CST