

STATE OF ILLINOIS  
DEPARTMENT OF TRANSPORTATION  
DIVISION OF HIGHWAYS

F.A.P. RTE.	SECTION	COUNTY	TOTAL SHEETS	SHEET NO.
331	2	JACKSON	23	1

CONTRACT NO. 98985  
\*(12-3)RS-2,(5-4)RS-3

D-99-044-06



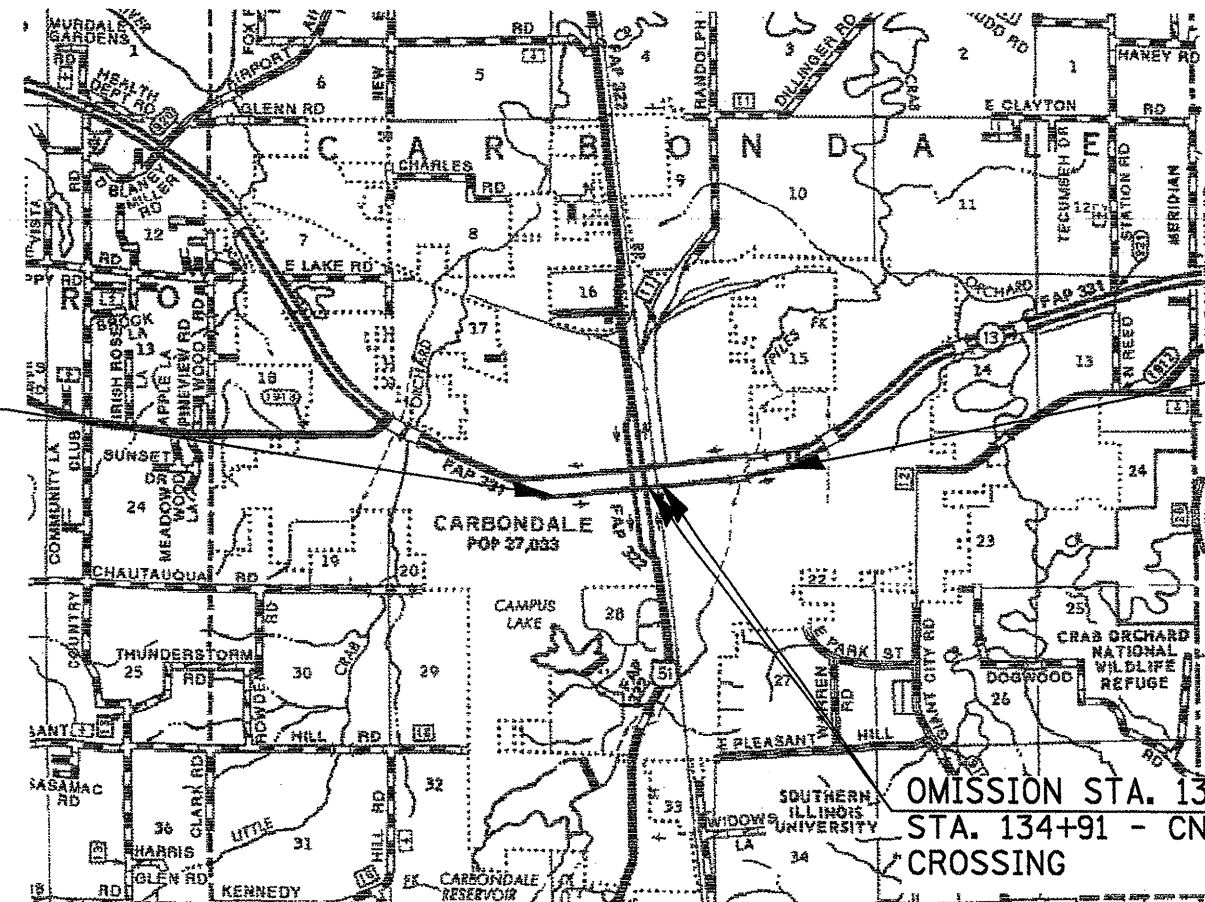
FOR INDEX OF SHEETS, SEE SHEET NO. 3

ADT (2007) 23,400

PV = 21,840  
MU = 575  
SU = 988

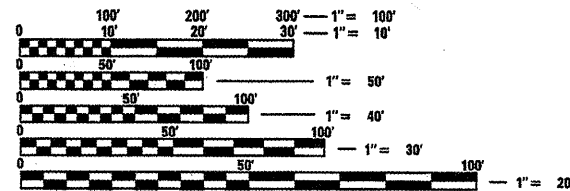
**PROPOSED  
HIGHWAY PLANS  
FAP ROUTE 331 (IL 13)  
SECTION (12-3)RS-2,(5-4)RS-3  
PROJECT NO. NHF-0331(047)  
JACKSON COUNTY  
C-99-054-06**

TOWNSHIP: CARBONDALE



PROPOSED IMPROVEMENT  
BEGINS FAP 331 (WALNUT ST.)  
STA. 100+37 (BUTT JT.)

PROPOSED IMPROVEMENT  
ENDS FAP 331 (WALNUT ST.)  
STA. 184+65 (BUTT JT.)



FULL SIZE PLANS HAVE BEEN PREPARED USING STANDARD ENGINEERING SCALES. REDUCED SIZED PLANS WILL NOT CONFORM TO STANDARD SCALES. IN MAKING MEASUREMENTS ON REDUCED PLANS, THE ABOVE SCALES MAY BE USED.

J.U.L.I.E.  
JOINT UTILITY LOCATION INFORMATION FOR EXCAVATION  
1-800-892-0123

OMISSION STA. 134+52 TO  
STA. 134+91 - CN RAILROAD  
CROSSING

NET LENGTH: 8389 FT. = 1.588 MILES  
GROSS LENGTH: 8428 FT. = 1.596 MILES

STATE OF ILLINOIS  
DEPARTMENT OF TRANSPORTATION  
DIVISION OF HIGHWAYS

SUBMITTED Nov 20 20 08  
Mr. Chami  
DEPUTY DIRECTOR OF HIGHWAYS, REGION ENGINEER

January 30 20 09  
Charles J. Ingersoll / RD  
ENGINEER OF DESIGN AND ENVIRONMENT

January 30 20 09  
Christine M. Reed / RD  
DIRECTOR OF HIGHWAYS, CHIEF ENGINEER

**PRINTED BY THE AUTHORITY  
OF THE STATE OF ILLINOIS**

PROJECT ENGINEER: CHARLES STEIN (618) 351-5210  
ENG. TECHNICIAN: KATHI MCCORD (618) 351-5216

CONTRACT NO. 98985

F.A.R. RTE.	SECTION	COUNTY	TOTAL SHEETS	SHEET NO.
331	•	JACKSON	23	2

STA. \_\_\_\_\_ TO STA. \_\_\_\_\_

FED. ROAD DIST. NO. \_\_\_\_\_ ILLINOIS FED. AID PROJECT

• (12-3)RS-2,(4-5)RS-3

Prepared By: Joe Blawiecy  
DISTRICT STUDIES & PLANS ENGINEER

Examined By: James Travis Emay  
DISTRICT LAND ACQUISITION ENGINEER

Examined By: Carrie Nelson  
DISTRICT PROGRAM DEVELOPMENT ENGINEER

Examined By: Kevin Grammy  
DISTRICT OPERATIONS ENGINEER

Examined By: Jim Smother  
DISTRICT CONSTRUCTION ENGINEER

Examined By: Bruce Stables  
DISTRICT MATERIALS ENGINEER

Examined By: Jim Smother  
DISTRICT PROJECT IMPLEMENTATION ENGINEER

Examined By: Donna Clayton  
ASSISTANT REGIONAL ENGINEER

Approved By: Max Krume  
DEPUTY DIRECTOR OF HIGHWAYS, REGION ENGINEER

DATE Nov 20 20 08

SIGNATURE BLOCK

PLOT DATE = 10/2/2008  
 PLOT SCALE = 1/4" = 100'  
 USER NAME = mcrdbr

F.A.P. RTE.	SECTION	COUNTY	TOTAL SHEETS	SHEET NO.
331	*	JACKSON	23	3
STA. _____		TO STA. _____		
FED. ROAD DIST. NO. _____ ILLINOIS FED. AID PROJECT				

• (12-3)RS-2,(4-5)RS-3

INDEX OF SHEETS

SHEET NO.	DESCRIPTION
1	COVER SHEET
2	SIGNATURE SHEET
3	INDEX OF SHEETS AND HIGHWAY STANDARDS, STRUCTURE RATINGS, PAVEMENT INVESTIGATION
4	GENERAL NOTES; MIXTURE REQUIREMENTS
5	SUMMARY OF QUANTITIES
6 - 10	TYPICAL SECTIONS
11	SCHEDULE FOR MAINLINE AND SIDE ROAD RESURFACING
12	SCHEDULE FOR PAVEMENT MARKING
13	LOCATION MAP FOR FAP 331 (IL 13 EASTBOUND/WALNUT ST.) FROM OAKLAND AVE. TO LEWIS LANE IN CARBONDALE
14 - 19	PLAN LAYOUT SHEETS - FAP 331 (IL 13/WALNUT ST.)
20	DETAILS: BUTT JT AT BEGINNING AND ENDING OF PROJECT
21	DETAILS: BUTT JOINTS AT RAILROAD CROSSING
22	STANDARD DETAILS - TEMP. HOT-MIX ASPHALT TRANSITIONS
23	STANDARD DETAILS - ROUGH GROOVED SURFACE SIGN; UNEVEN LANE SIGN

STRUCTURE RATINGS

STRUCTURE NO.	INV. RATING	OPER. RATING	SUFF. RATING
IL 13 EBL (WALNUT ST.) - STA. 164+90			
039-2009	25.0	36.1	83.7

PAVEMENT INVESTIGATION  
ON IL 13/WALNUT ST.

LOCATION	LANE	DEPTH OF PAVEMENT
BETWEEN JAMES ST. AND FOREST ST.		
STA. 105+00	LEFT	12.25" Asphalt over soil
STA. 105+00	CENTER	12.25" Asphalt over soil
STA. 105+00	RIGHT	2.25" Asphalt over 6" Conc. over Agg.
BETWEEN MARION ST. AND LOGAN ST.		
STA. 145+00	LEFT	12.25" Asphalt over soil
STA. 145+00	CENTER	14.5" Asphalt over soil
STA. 145+00	RIGHT	2.75" Asphalt over 10" Conc. over Agg.
BETWEEN WALL ST. AND DORTHELLA ST.		
STA. 160+00	LEFT	2" Asphalt over 10" PCC over 3" BAM
STA. 160+00	CENTER	2" Asphalt over 10" PCC over 3" BAM
STA. 160+00	RIGHT	2" Asphalt over 10" PCC over 3" BAM

HIGHWAY STANDARDS

000001-05	780001-02
442201-03	886001-01
701601-06	886006-01
701701-06	
701901-01	

PLOT DATE = 12/14/2008  
 PLOT SCALE = 1/8" = 100'  
 USER NAME = mason@dr

F.A.R. RTE.	SECTION	COUNTY	TOTAL SHEETS	SHEET NO.
331		JACKSON	23	4
STA. _____		TO STA. _____		
FED. ROAD DIST. NO. _____		ILLINOIS FED. AID PROJECT		

• (12-3)RS-2,(4-5)RS-3

**GENERAL NOTES**

THE THICKNESS OF BITUMINOUS MIXTURE SHOWN ON THE PLANS IS THE NOMINAL THICKNESS. DEVIATIONS FROM THE NOMINAL THICKNESS WILL BE PERMITTED WHEN SUCH DEVIATIONS OCCUR DUE TO IRREGULARITIES IN THE EXISTING SURFACE OR BASE ON WHICH THE BITUMINOUS MIXTURE IS PLACED.

FACTORS USED FOR ESTIMATING PLAN QUANTITIES ARE AS FOLLOWS AND SHALL NOT BE USED FOR THE BASIS OF FINAL QUANTITIES EXCEPT FOR QC/QA OF BITUMINOUS MIXTURES:

- ALL HOT-MIX ASPHALT.....2.016 TONS/CU.YD.
- ALL AGGREGATE.....2.05 TONS/CU.YD.
- BITUMINOUS MATERIALS (PRIME COAT)
  - ON PAVEMENT.....0.09 GALS./SQ. YD.
  - ON AGG. SURFACE.....0.32 GALS./SQ. YD.
- AGGREGATE (PRIME COAT).....0.0015 TONS/SQ. YD.

THE QUANTITY OF SHORT TERM PAVEMENT MARKING SHOWN IN THE PLANS WAS BASED ON ONE APPLICATION EACH FOR THE PRIME COAT, SURFACE COURSE AND LEVELING BINDER.

PRIOR TO PLACEMENT OF THE FINAL PAVEMENT MARKINGS, THE RESIDENT ENGINEER SHOULD CONTACT THE BUREAU OF OPERATIONS AND ARRANGE FOR INSPECTION AND APPROVAL OF THE PAVEMENT MARKING LAYOUT.

THE CONTRACTOR SHALL STAMP STATIONING IN THE PROPOSED BITUMINOUS MATS AT 300 FT. INTERVALS ON ALTERNATING SIDES OF THE PAVEMENT AND AS DIRECTED BY THE ENGINEER. THE STATION SYMBOL STAMPS USED SHALL BE FURNISHED BY THE CONTRACTOR. THEY SHALL BE 5 1/2" TALL OF A DESIGN APPROVED BY THE ENGINEER AND SHALL REMAIN THE PROPERTY OF THE CONTRACTOR.

UNLESS OTHERWISE DIRECTED BY THE ENGINEER, HOT-MIX ASPHALT RESURFACING SHALL BE PLACED IN A SEQUENCE THAT WILL MINIMIZE THE TIME THAT A LANE EDGE IS EXPOSED TO TRAFFIC.

NIGHT WORK WILL NOT BE ALLOWED ON IL 13 (WALNUT ST.) FROM OAKLAND AVE. TO UNIVERSITY AVE.

QUANTITIES SHOWN IN THE PLANS FOR PATCHING ARE ESTIMATES. THE ACTUAL AMOUNT OF PATCHING REQUIRED SHALL BE DETERMINED BY THE ENGINEER IN THE FIELD.

THE SAWED JOINTS AT THE BEGINNING, END, AT THE OLD IL 13 CONNECTOR AND AT THE RAILROAD OMISSION SHALL BE INCLUDED IN THE COST OF HOT-MIX ASPHALT SURFACE REMOVAL - 2 1/4".

THE FURNISHING AND INSTALLATION OF THE 1 1/4" CONDUIT WITH ITS TRENCHING AND BACKFILL FROM THE LOOP TO THE SPLICE POINT SHALL BE INCLUDED IN THE LOOP INSTALLATION COST UNLESS SHOWN OTHERWISE ON THE PLANS.

CABLE QUANTITIES ARE MEASURED IN PLAN VIEW.

THE LOCATION OF THE DETECTOR LOOPS, AS SHOWN ON THE PLANS, MAY BE ADJUSTED TO FIT FIELD CONDITIONS AS DIRECTED BY THE ENGINEER OF TRAFFIC OPERATIONS.

WHEN SETTING UP TRAFFIC CONTROL, CONTRACTOR SHOULD BE AWARE OF 2 LEFT TURN LANES TURNING FROM UNIVERSITY AVE. ON TO WALNUT ST. AND 2 LEFT TURN LANES TURNING FROM ILLINOIS AVE. ON TO WALNUT ST.

EXISTING DETECTOR LOOPS ON SIDE STREETS SHALL NOT BE DISTURBED. ANY LOOPS CUT OR DAMAGED BY THE CONTRACTOR SHALL BE REPAIRED AT THE CONTRACTOR'S EXPENSE AND AT NO CHARGE TO THE STATE.

ALL DETECTOR LOOPS SHALL BE INSTALLED PRIOR TO RESURFACING.

THE CONTRACTOR SHALL NOTIFY THE ENGINEER OF TRAFFIC OPERATIONS 72 HOURS PRIOR TO THE SHUT-DOWN OR CUTTING OF EXISTING DETECTOR LOOPS.

COMMITMENTS:  
THE CITY OF CARBONDALE WILL PARTICIPATE IN THE MILLING AND SURFACING OF EXISTING PARKING LANE FROM LT. STA. 100+74 TO LT. STA. 127+27. SEE THE SUMMARY OF QUANTITIES SHEET FOR QUANTITY BREAKDOWN.

MIXTURE REQUIREMENTS SHALL BE PREPARED AS DIRECTED BELOW:

FOR IL. 13 (WALNUT ST.) MAINLINE SURFACE COURSE:

Mixture Use(s):	Polymerized Hot-Mix Asphalt Surface Course, Mixture E, N105
AC/PG:	SBS PG76-22
RAP % (Max.):	0
Design Air Voids:	4.0%, 105 Gyration Design
Mixture Composition: (Gradation Mixture)	IL-9.5mm or IL-12.5 mm
Friction Aggregate:	E Surface

FOR IL. 13 (WALNUT ST.) MAINLINE LEVELING BINDER:

Mixture Use(s):	Polymerized Hot-Mix Asphalt Surface Course, Mixture C, N105
AC/PG:	SBS PG76-22
RAP % (Max.):	0
Design Air Voids:	4.0%, 105 Gyration Design
Mixture Composition: (Gradation Mixture)	IL-9.5mm or IL-12.5 mm
Friction Aggregate:	None

FOR ILLINOIS AVE. AND UNIVERSITY AVE.: INCIDENTAL HMA SURFACE

Mixture Use(s):	Hot-Mix Asphalt Surface Course, Mixture C, N90
AC/PG:	PG64-22
RAP % (Max.):	10
Design Air Voids:	4.0%, 90 Gyration Design
Mixture Composition: (Gradation Mixture)	IL-9.5mm or IL-12.5 mm
Friction Aggregate:	C Surface

F.A.P. RTE.	SECTION	COUNTY	TOTAL SHEETS	SHEET NO.
331		JACKSON	23	5
STA.		TO STA.		
FED. ROAD DIST. NO.		ILLINOIS FED. AID PROJECT		

• (12-3)RS-2,(4-5)RS-3

SUMMARY OF QUANTITIES

CODE NUMBER	ITEM DESCRIPTION	UNIT	TOTAL QUANTITY	URBAN	
				FAP 331 (IL 13) 80% FED / 20% STATE JACKSON COUNTY	FAP 331 (IL 13) PARKING LANE 100% CARBONDALE JACKSON COUNTY
				1000 QUANTITY	1000 QUANTITY
Z0048665	RAILROAD PROTECTIVE LIABILITY INSURANCE	L SUM	1	1	
40600115	POLYMERIZED BITUMINOUS MATERIALS (PRIME COAT)	GALLON	6,582	6449	133
40600300	AGGREGATE (PRIME COAT)	TON	108	106	2
40600855	POLYMERIZED LEVELING BINDER (MACHINE METHOD),N105	TON	1,536	1474	62
40600895	CONSTRUCTING TEST STRIP	EACH	1	1	
40600990	TEMPORARY RAMP	SQ YD	227	227	
40603575	POLYMERIZED HOT-MIX ASPHALT SURFACE COURSE, MIXTURE "E", N105	TON	3,072	2948	124
40800050	INCIDENTAL HOT-MIX ASPHALT SURFACING	TON	47	47	
44000158	HOT-MIX ASPHALT SURFACE REMOVAL, 2 1/4"	SQ YD	36,939	35464	1475
44200152	PAVEMENT PATCHING, TYPE I, 13 INCH	SQ YD	25	25	
44200156	PAVEMENT PATCHING, TYPE II, 13 INCH	SQ YD	515	515	
44200162	PAVEMENT PATCHING, TYPE IV, 13 INCH	SQ YD	76	76	
67000400	ENGINEER'S FIELD OFFICE, TYPE A	CAL MO	2	2	
67100100	MOBILIZATION	L SUM	1	1	
70102630	TRAFFIC CONTROL AND PROTECTION, STANDARD 701601	L SUM	1	1	
70102635	TRAFFIC CONTROL AND PROTECTION, STANDARD 701701	L SUM	1	1	
70106800	CHANGEABLE MESSAGE SIGN	CAL MO	2	2	
70300100	SHORT- TERM PAVEMENT MARKING	FOOT	2,091	2091	
70300210	TEMPORARY PAVEMENT MARKING- LETTERS <sup>AND</sup> SYMBOLS	SQ FT	409.4	409.4	
70300220	TEMPORARY PAVEMENT MARKING- LINE 4"	FOOT	5,397.0	5,264.0	133
70300240	TEMPORARY PAVEMENT MARKING- LINE 6"	FOOT	1,197.0	1,197.0	
70300260	TEMPORARY PAVEMENT MARKING- LINE 12"	FOOT	220.0	220.0	
70300280	TEMPORARY PAVEMENT MARKING- LINE 24"	FOOT	359.0	359.0	
70301000	WORK ZONE PAVEMENT MARKING REMOVAL	SQ FT	2,471.0	2,427.0	44
* 78003100	PREFORMED PLASTIC PAVEMENT MARKING, TYPE B - LETTERS <sup>AND</sup> SYMBOLS	SQ FT	409.4	409.4	
* 78004210	PREFORMED PLASTIC PAVEMENT MARKING, TYPE B - INLAID - LINE 4"	FOOT	5,397.0	5,264.0	133
* 78004230	PREFORMED PLASTIC PAVEMENT MARKING, TYPE B - INLAID - LINE 6"	FOOT	1,197.0	1,197.0	
* 78004250	PREFORMED PLASTIC PAVEMENT MARKING, TYPE B - INLAID - LINE 12"	FOOT	220.0	220.0	
* 78004280	PREFORMED PLASTIC PAVEMENT MARKING, TYPE B - INLAID - LINE 24"	FOOT	359.0	359.0	
78300200	RAISED REFLECTIVE PAVEMENT MARKER REMOVAL	EACH	232.0	232.0	
* 88600100	DETECTOR LOOP, TYPE I	FOOT	620	620	

\*Specialty Items

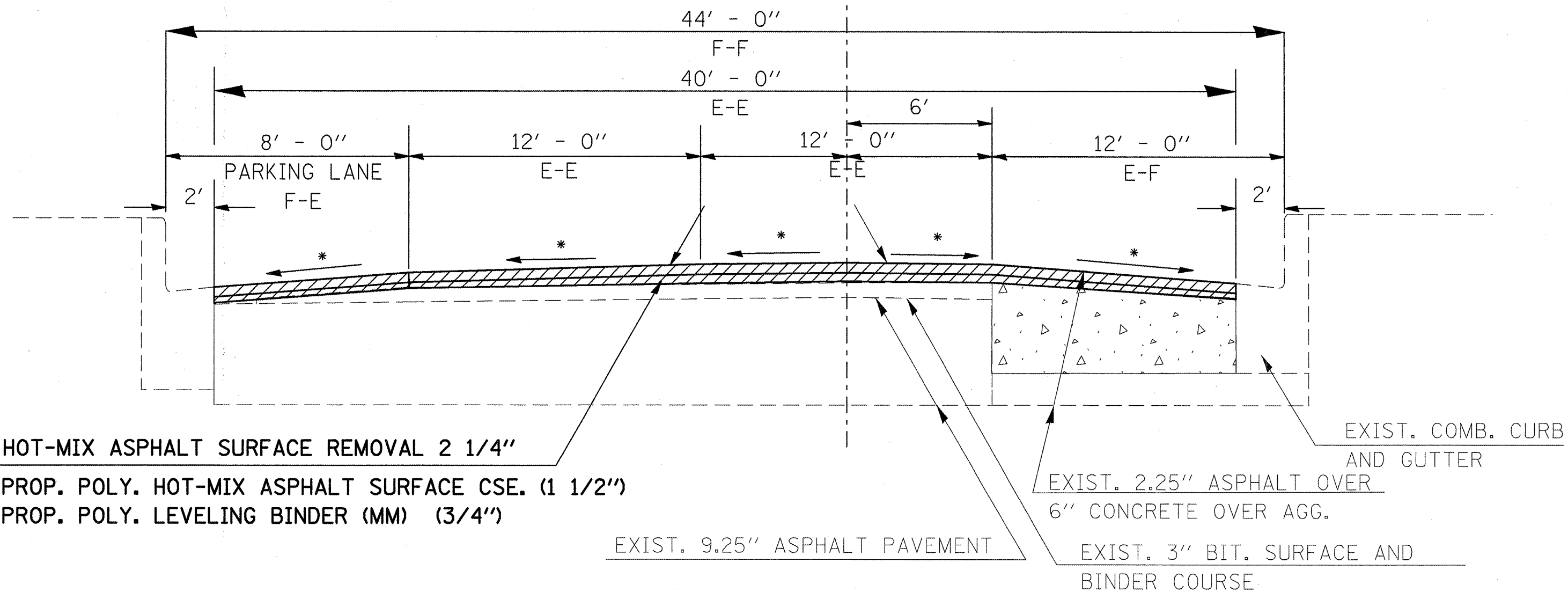
PLOT DATE = 12/1/2008  
 FILE NAME = c:\pwworking\autodesk\AutoCAD 2008\AutoCAD 2008\p10.dwg  
 PLOT SCALE = 1/8"=1'-0"  
 USER NAME = mcorcoran

F.A.B. RTE.	SECTION	COUNTY	TOTAL SHEETS	SHEET NO.
331		JACKSON	23	6

STA. \_\_\_\_\_ TO STA. \_\_\_\_\_  
 FED. ROAD DIST. NO. - ILLINOIS FED. AID PROJECT

• (12-3)RS-2,(4-5)RS-3

☉ FAP 331  
 (IL 13-WALNUT ST.)



HOT-MIX ASPHALT SURFACE REMOVAL 2 1/4"  
 PROP. POLY. HOT-MIX ASPHALT SURFACE CSE. (1 1/2")  
 PROP. POLY. LEVELING BINDER (MM) (3/4")

EXIST. 9.25" ASPHALT PAVEMENT

EXIST. 2.25" ASPHALT OVER  
 6" CONCRETE OVER AGG.

EXIST. 3" BIT. SURFACE AND  
 BINDER COURSE

EXIST. COMB. CURB  
 AND GUTTER

\* MATCH EX. SLOPE

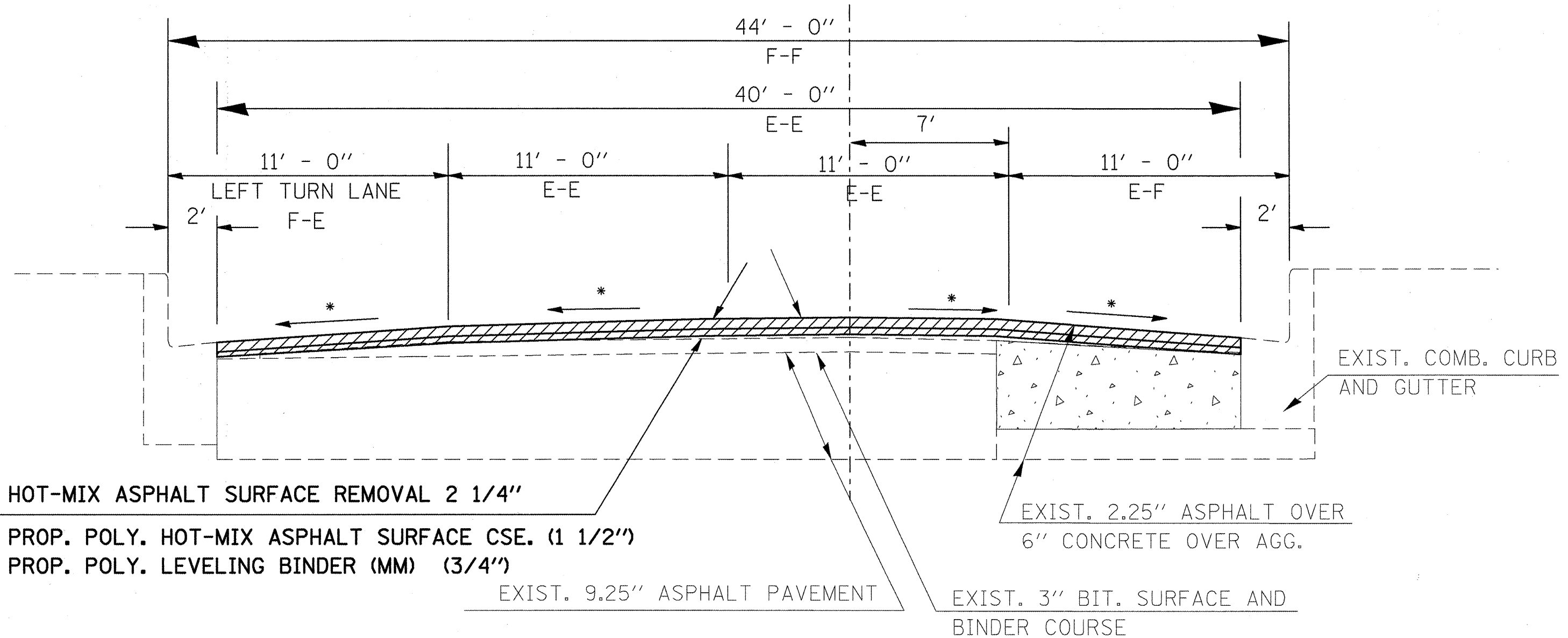
TO BE USED:

STA. 100+37 (BUTT JT. AT OAKLAND AVE.) TO STA. 127+69.67 (UNIVERSITY AVE.)

DATE = 12/1/2000  
 FILE NAME = \\sdc\project\98995\98995.dwg  
 PLOT SCALE = 1/8" = 1'-0"  
 USER NAME = mccord

CONTRACT NO. 98985			
F.A.P. RTE.	SECTION	COUNTY	TOTAL SHEET NO.
331		JACKSON	23 7
STA.	TO STA.		
FED. ROAD DIST. NO. ILLINOIS FED. AID PROJECT			
* (12-3)RS-2,(4-5)RS-3			

☉ FAP 331  
(IL 13-WALNUT ST.)



\* MATCH EX. SLOPE

TO BE USED:  
 STA. 127+69.67 (UNIVERSITY AVE.) TO STA. 134+52 (RR XING BUTT JT.)  
 RAILROAD OMITTED FROM STA. 134+52 TO STA. 134+91

DATE = 12/1/2008  
 FILE NAME = c:\pwworkspace\pwworkspace\1276967.dwg  
 PLOT SCALE = 1/8"=1'-0"  
 USER NAME = mcooper





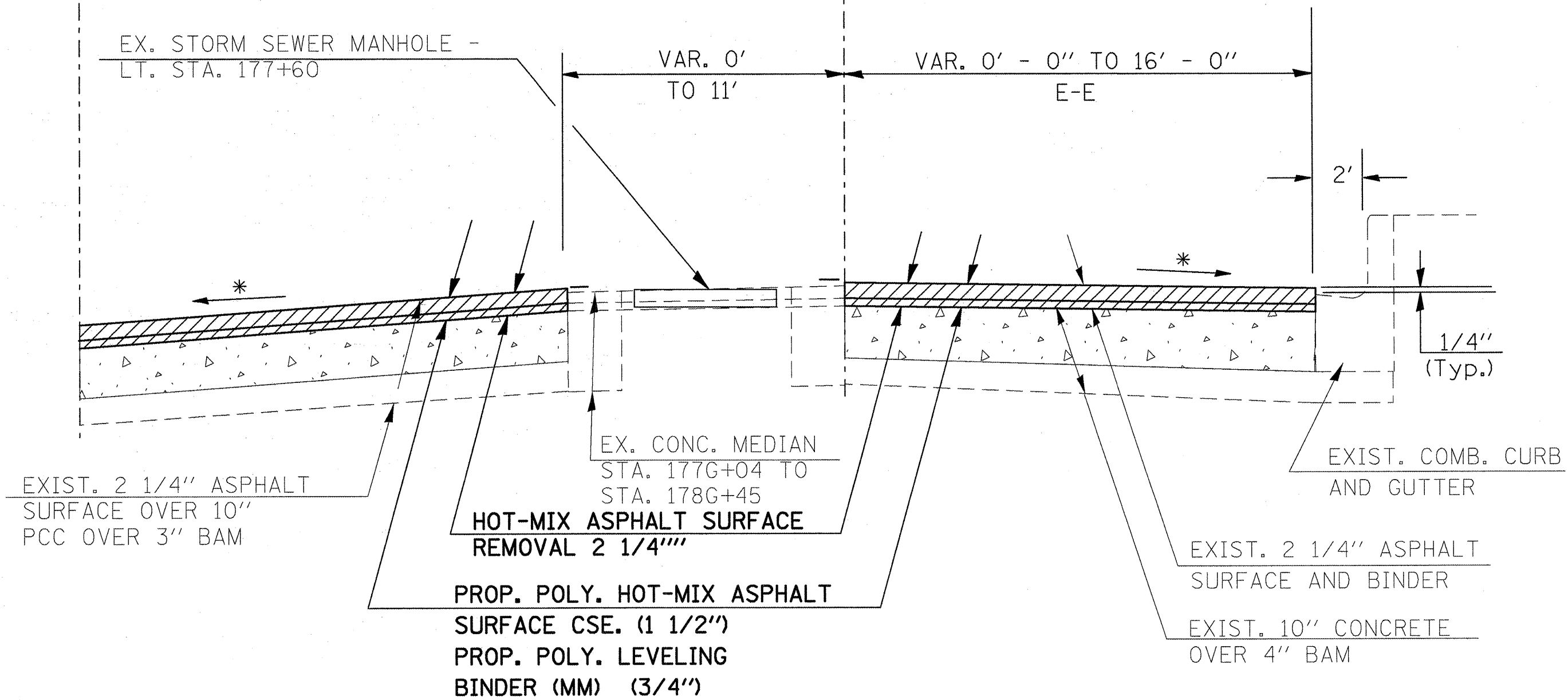


F.A.B. RTE.	SECTION	COUNTY	TOTAL SHEETS	SHEET NO.
331	.	JACKSON	23	10
STA. _____ TO STA. _____		FED. ROAD DIST. NO. ILLINOIS FED. AID PROJECT		

• (12-3)RS-2,(4-5)RS-3

☉ FAP 331  
(IL 13-WALNUT ST.)

☉ OLD IL 13 CONNECTOR  
(WALNUT ST.)



EXIST. 2 1/4" ASPHALT SURFACE OVER 10" PCC OVER 3" B.A.M.

HOT-MIX ASPHALT SURFACE REMOVAL 2 1/4"

PROP. POLY. HOT-MIX ASPHALT SURFACE CSE. (1 1/2")  
PROP. POLY. LEVELING BINDER (MM) (3/4")

EXIST. 2 1/4" ASPHALT SURFACE AND BINDER  
EXIST. 10" CONCRETE OVER 4" B.A.M.

TO BE USED:  
RT. STA. 173G+56.84 TO RT. STA. 178G+50  
(EX. CONC. MEDIAN AND OLD IL 13 CONNECTOR LANE)

\* MATCH EX. SLOPE

PLOT DATE = 12/1/2008  
FILE NAME = c:\pwork\mason\mason.dwg  
USER NAME = mason

F.A.P. RTE.	SECTION	COUNTY	TOTAL SHEETS	SHEET NO.
331		JACKSON	23	11
STA.		TO STA.		
FED. ROAD DIST. NO. 1		ILLINOIS FED. AID PROJECT		

\* (12-3)RS-2,(4-5)RS-3

RESURFACING SCHEDULE

LOCATION	STATION TO STATION		LENGTH	ROADWAY WIDTH	ROADWAY AREA	HOT-MIX ASP. SURF. REM. 2 1/4"	TEMPORARY RAMP	POLY. HOT-MIX ASP. SUR. CSE., MIX E, N 105	POLY. LEVEL BINDER (MM) N105	POLY. BIT. MAT. (PRIME COAT)	AGG. (PRIME COAT)	NOTES		
			FOR INFORMATIONAL PURPOSE ONLY					(SQ YD)	(SQ YD)	(TON)	(TON)		(GAL)	(TON)
			(FT)	(FT)	(SQ YD)	(SQ YD)	(SQ YD)	(SQ YD)	(TON)	(TON)	(GAL)		(TON)	
<b>MAINLINE - STA. 100+37 TO STA. 127+69.67 (INLAY)</b>														
	100+37.00	TO	127+69.67	2732.7	34.0	10323.4	10323	19	867	434	1858.2	31.0		
	127+69.67	TO	134+52.00	682.3	40.0	3032.6	3033		255	127	545.9	9.1		
	134+52.00		RR Xing					22						
	134+52.00	TO	134+91.00					<b>RAILROAD OMISSION STA. 132+82 TO STA. 136+72</b>						
	134+91.00		RR Xing					22						
	134+91.00	TO	156+48.00	2157.0	40.0	9586.7	9587		805	403	1725.6	28.8		
	156+48.00	TO	181+00.00	2452.0	36.0	9808.0	9808		824	412	1765.4	29.4		
RT	1740+37	TO	1780+50	413.0	0' to 16'	506.0	506	9	43	21	182.2	1.6	Old IL 13 Conn.	
	181+00.00	TO	182+66.00	166.0	36 - 48	775.0	775		65	33	139.6	2.4	Includes LTL	
	182+66.00	TO	184+65.00	199.0	48.0	1061.3	1061	27	89	45	191.0	3.2	Includes LTL	
<b>SUB-TOTALS</b>							<b>35093</b>	<b>99</b>	<b>2948</b>	<b>1474</b>	<b>6408</b>	<b>105</b>		
<b>PARKING LANES WITH BOULEVARD EXTENSIONS OMITTED</b>														
LT	100+74.00	TO	102+78.00	204.0	6.0	139	139		12	6	12.5	0.2		
LT	103+32.00	TO	106+60.00	328.0	6.0	223	223		19	9	20.1	0.3		
LT	107+43.00	TO	108+65.00	122.0	6.0	120	120		10	5	10.8	0.2		
LT	110+03.00	TO	111+77.00	174.0	6.0	120	120		10	5	10.8	0.2		
LT	113+17.00	TO	116+74.00	357.0	6.0	242	242		20	10	21.8	0.4		
LT	117+84.00	TO	127+27.00	943.0	6.0	631	631		53	27	56.8	0.9		
<b>SUB-TOTALS</b>							<b>1475</b>	<b>0</b>	<b>124</b>	<b>62</b>	<b>133</b>	<b>2</b>		
<b>PROJECT TOTALS</b>							<b>36568</b>	<b>99</b>	<b>3072</b>	<b>1536</b>	<b>6541</b>	<b>108</b>		

SIDE ROAD RESURFACING SCHEDULE

NAME	STATION	SURFACE TYPE	WIDTH AT EDGE OF PAVEMENT	DISTANCE TO END OF SURFACING	WIDTH AT END OF SURFACING	SURFACE AREA	TEMP RAMP	POLY BIT MATERIAL (PR CT)	AGGREGATE (PR CT)	INCIDENTAL HMA SURFACE
			(FT)	(FT)	(FT)	(SQ YD)	(SQ YD)	(GAL)	(TON)	(TON)
<b>FAP 331 (IL. 13/WALNUT ST.)</b>										
University Ave.	Lt. 127+69+67	b1+	74	17.5	34	87	31	7.8	0.13	11
University Ave.	Rt. 127+69+67	b1+	80				44			
Illinois Ave.	Lt. 132+41	b1+	62				34			
Illinois Ave.	Rt. 132+41	b1+	80	67	33	284	19	25.6	0.43	36
<b>TOTALS</b>							<b>128</b>	<b>33</b>	<b>0.56</b>	<b>47</b>

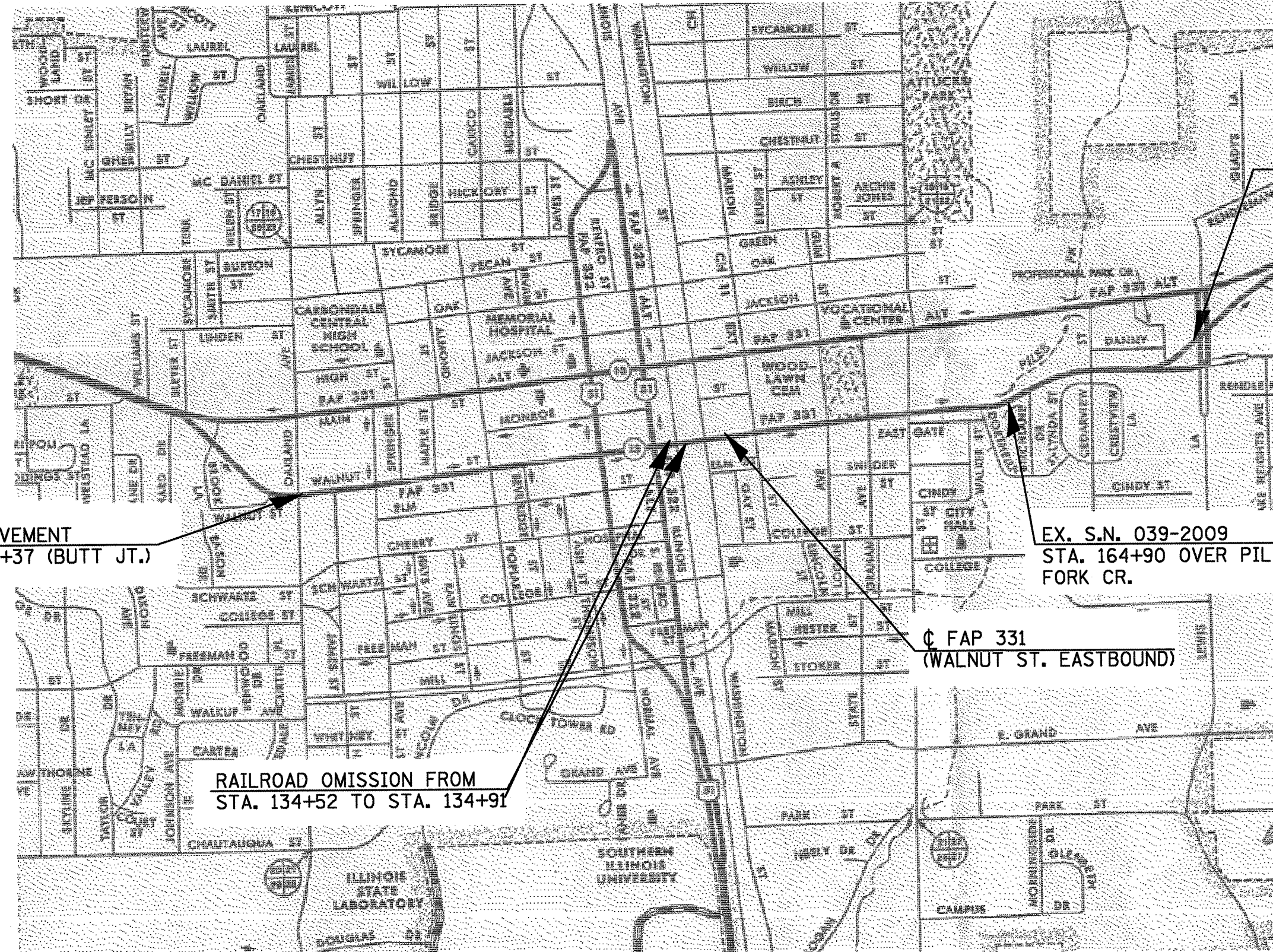
PLOT DATE = 12/1/2088  
 FILE NAME = G:\p\work\youda\resurfac\resurfac.dwg  
 PLOT SCALE = 1/8"=1'-0"  
 USER NAME = mcdonald



F.A.R. RTE.	SECTION	COUNTY	TOTAL SHEETS	SHEET NO.
331		JACKSON	23	13
STA. _____		TO STA. _____		
FED. ROAD DIST. NO. _____		ILLINOIS FED. AID PROJECT		

(12-3)RS-2,(4-5)RS-3

LOCATION MAP  
 FAP 331 EASTBOUND (WALNUT ST.)  
 CARBONDALE



PROPOSED IMPROVEMENT  
 BEGINS STA. 100+37 (BUTT JT.)

PROPOSED IMPROVEMENT  
 ENDS STA. 184+65  
 (BUTT JT.)

EX. S.N. 039-2009  
 STA. 164+90 OVER PILES  
 FORK CR.

☐ FAP 331  
 (WALNUT ST. EASTBOUND)

RAILROAD OMISSION FROM  
 STA. 134+52 TO STA. 134+91

PLOT DATE = 12/4/2008  
 PLOT SCALE = 1/8"=20'  
 USER NAME = mcorcoran



F.A.D. RTE.	SECTION	COUNTY	TOTAL SHEETS	SHEET NO.
331		JACKSON	23	14
STA.		TO STA.		
FED. ROAD DIST. NO.		ILLINOIS FED. AID PROJECT		

• (12-3)RS-2,(4-5)RS-3

NOTES

THE CITY OF CARBONDALE WILL PARTICIPATE IN FUNDING THE RESURFACING OF EX. PARKING LANE FROM LT. STA. 100+74 TO LT. STA. 127+27.

THE SALUKI PAW PRINTS PAVEMENT MARKINGS SHALL BE REPLACED BY OTHERS.

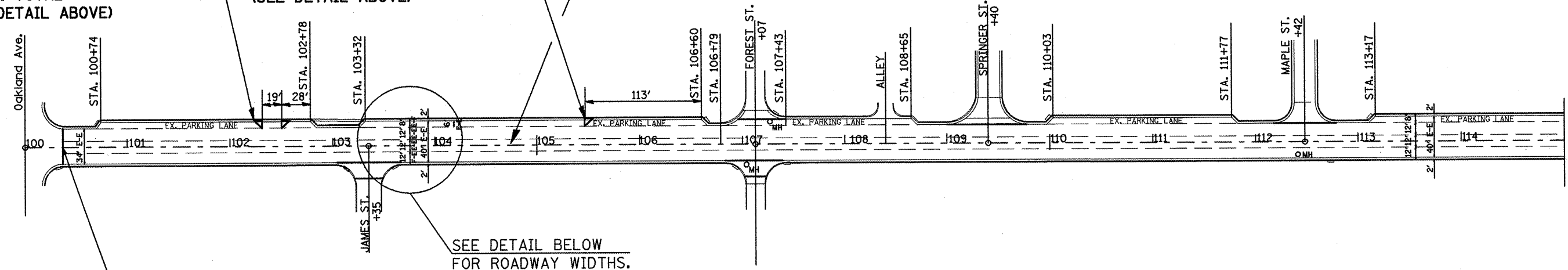
PARKING LANE DETAIL



PREFORMED PLASTIC PVT MRKG, TYPE B - INLAID - LINE 4" STA. 102+31, (27 FT. EACH) 54 FT. TOTAL (SEE DETAIL ABOVE)

PREFORMED PLASTIC PVT MRKG, TYPE B - INLAID - LINE 4" STA. 105+47, 27 FT. (SEE DETAIL ABOVE)

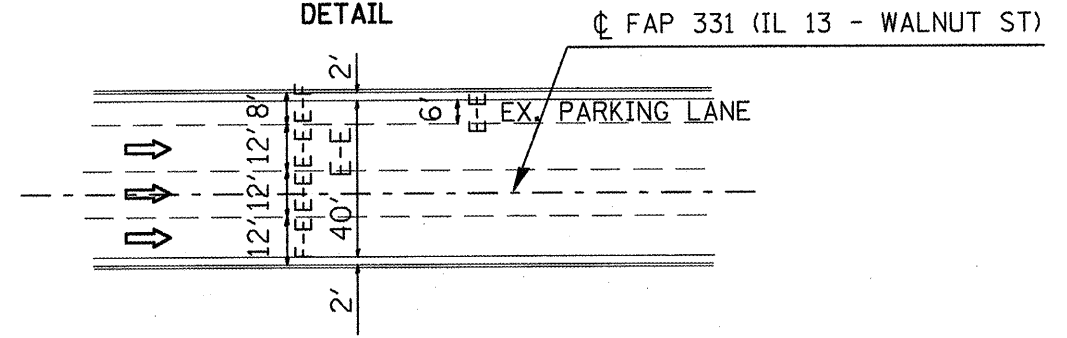
CL FAP 331 (IL 13 - WALNUT ST)



SEE DETAIL BELOW FOR ROADWAY WIDTHS.

PROP. IMPROVEMENT BEGINS STA. 100+37 (CL IL. 13 EB - WALNUT ST.) PROP. BUTT JOINT

ROADWAY LANE WIDTHS DETAIL



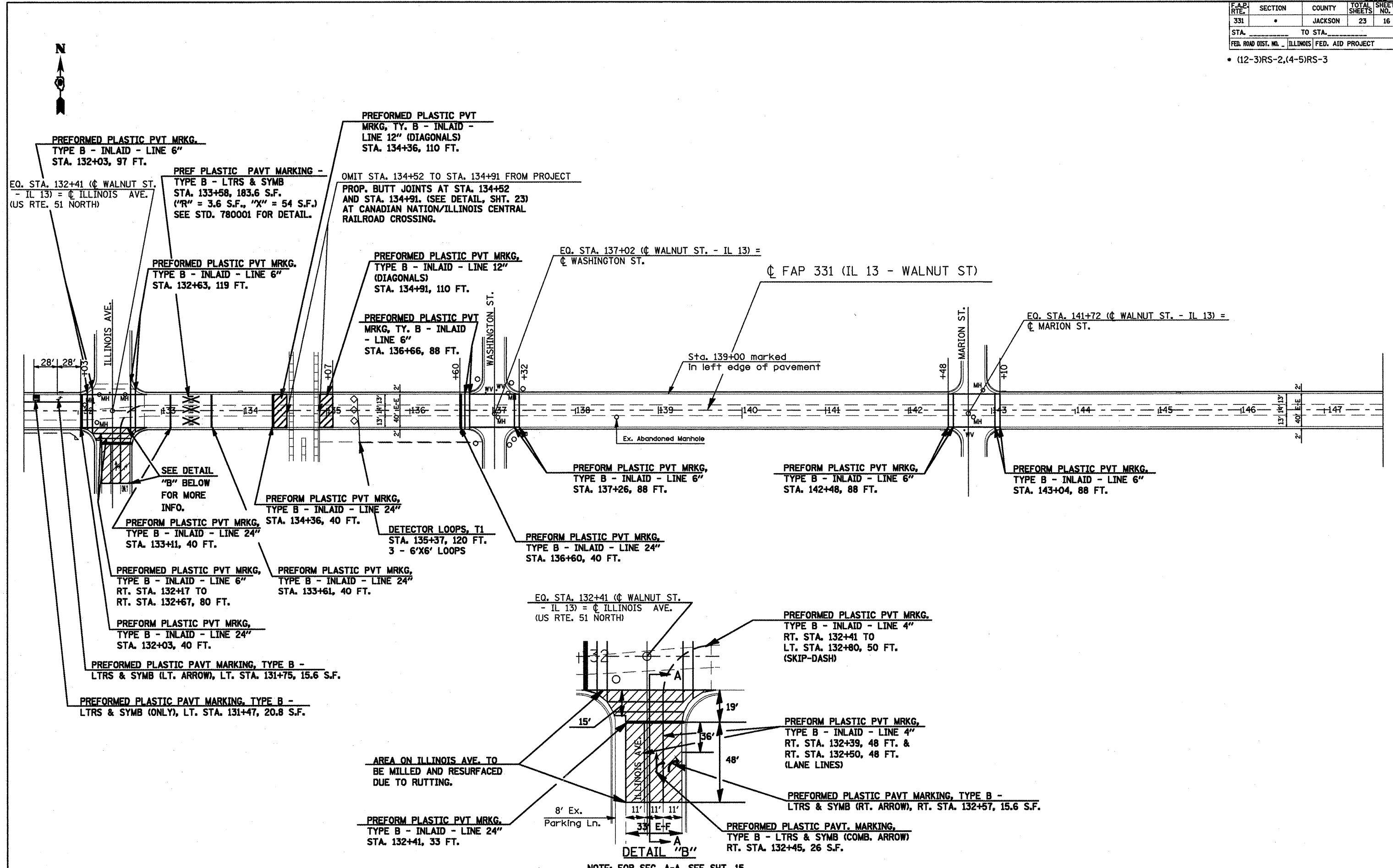
⇨ = Direction of Traffic

PLOT DATE = 12/1/2088  
 FILE NAME = c:\pwworkspace\Autodesk\AutoCAD 2014\Projects\123456.dwg  
 PLOT SCALE = 1/8"=1'-0"  
 USER NAME = user



F.A.P. RTE.	SECTION	COUNTY	TOTAL SHEETS	SHEET NO.
331	•	JACKSON	23	16
STA. _____ TO STA. _____		FED. ROAD DIST. NO. _____ ILLINOIS FED. AID PROJECT		

• (12-3)RS-2,(4-5)RS-3



PLOT DATE = 12/21/2009  
 PLOT SCALE = 1/4" = 100'  
 USER NAME = mcorcoran

NOTE: FOR SEC. A-A, SEE SHT. 15.

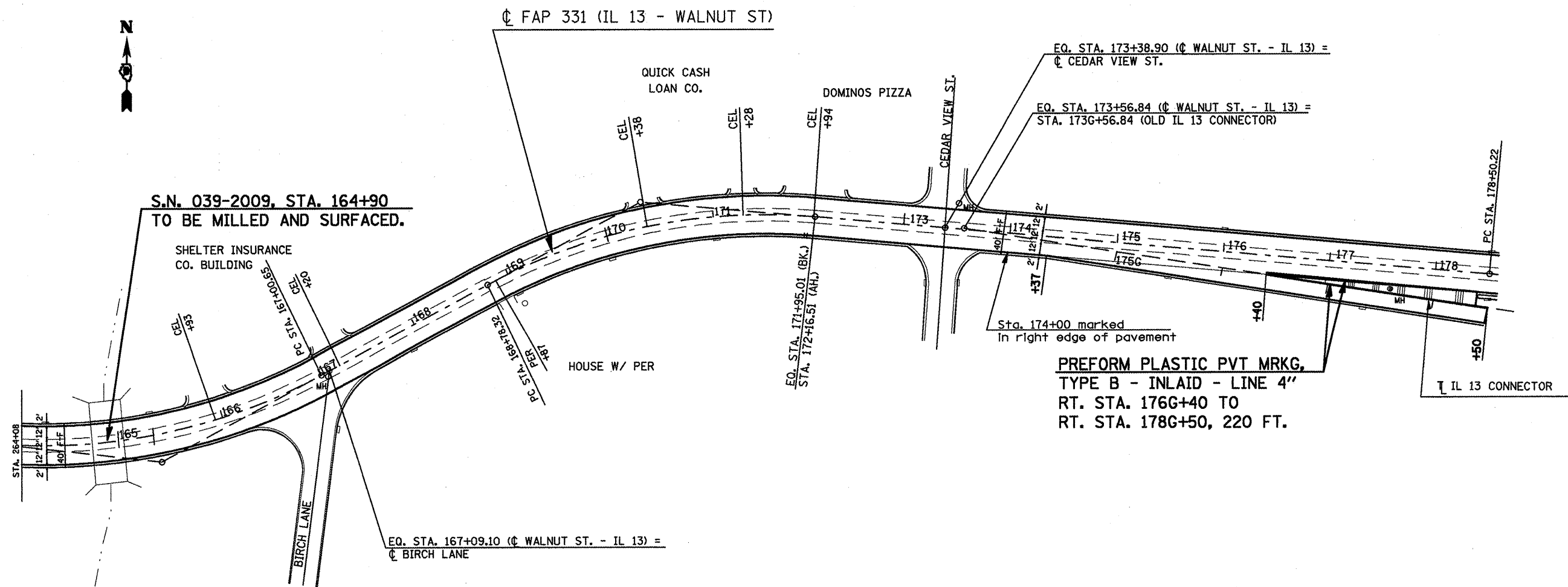
PLAN LAYOUT - STA. 131+35 TO STA. 147+70





CONTRACT NO. 98985			
F.A.P. RTE.	SECTION	COUNTY	TOTAL SHEET NO.
331	.	JACKSON	23 18
STA. _____		TO STA. _____	
FED. ROAD DIST. NO. _____		ILLINOIS FED. AID PROJECT	

• (12-3)RS-2,(4-5)RS-3

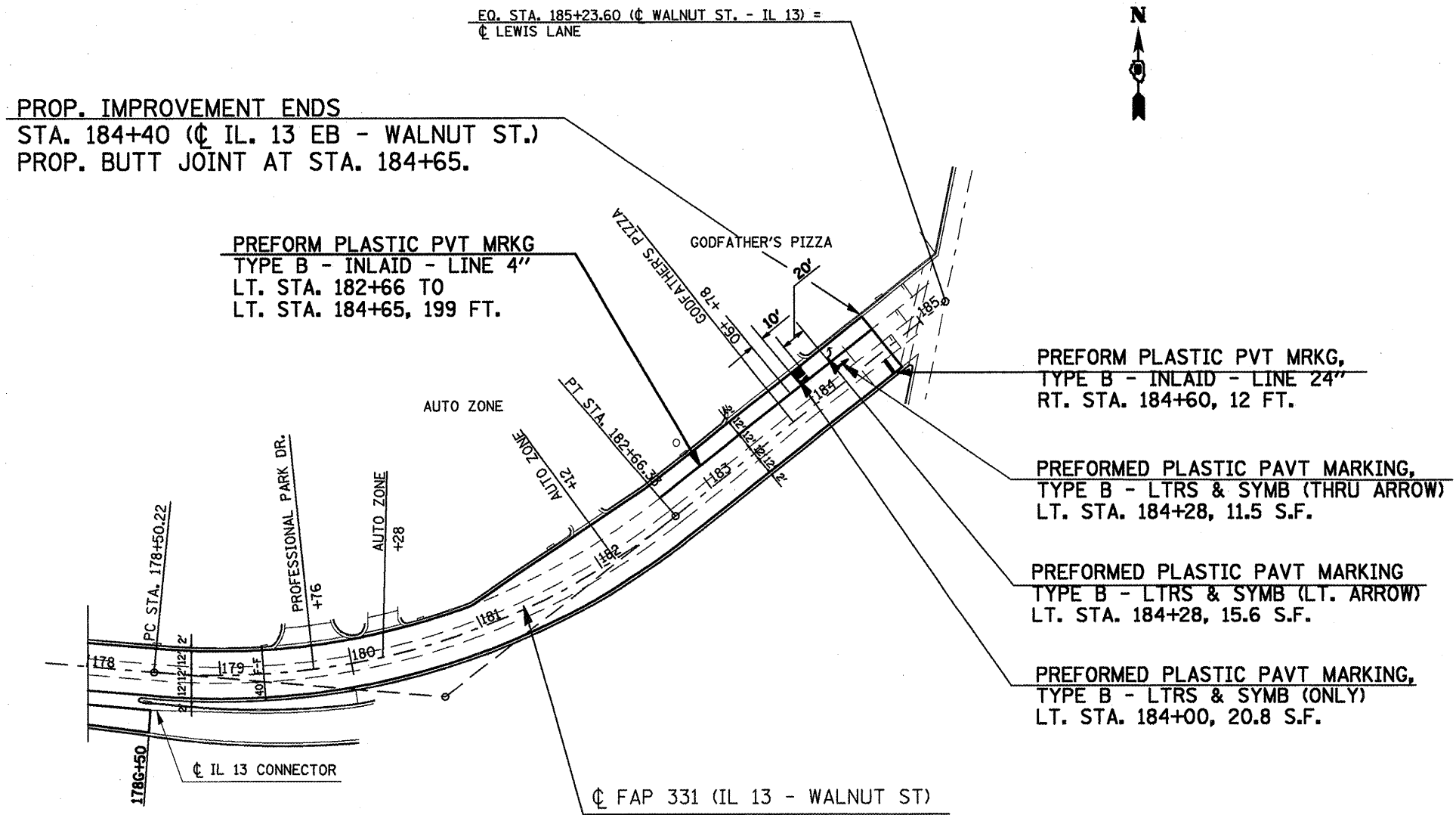


PLOT DATE = 12/4/2008  
 FILE NAME = c:\pwworkspace\user\project\road\road.dwg  
 PLOT SCALE = 1/8"=1'-0"  
 USER NAME = mason

PLAN LAYOUT - STA. 164+08 TO STA. 178+58

F.A.P. RTE.	SECTION	COUNTY	TOTAL SHEETS	SHEET NO.
331	*	JACKSON	23	19
STA. _____		TO STA. _____		
FED. ROAD DIST. NO. _____		ILLINOIS	FED. AID PROJECT	

\* (12-3)RS-2,(4-5)RS-3



PLOT DATE = 12/1/2008  
FILE NAME = c:\Users\user\Documents\user\121408\121408.dwg  
USER NAME = user

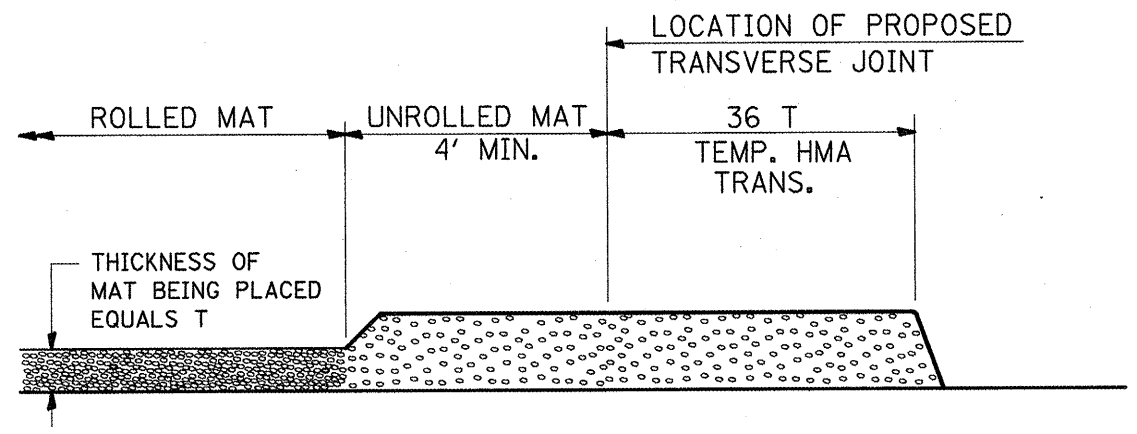




F.A.B. RTE.	SECTION	COUNTY	TOTAL SHEETS	SHEET NO.
331		JACKSON	23	22
STA. _____		TO STA. _____		
FED. ROAD DIST. NO. _____		ILLINOIS FED. AID PROJECT		

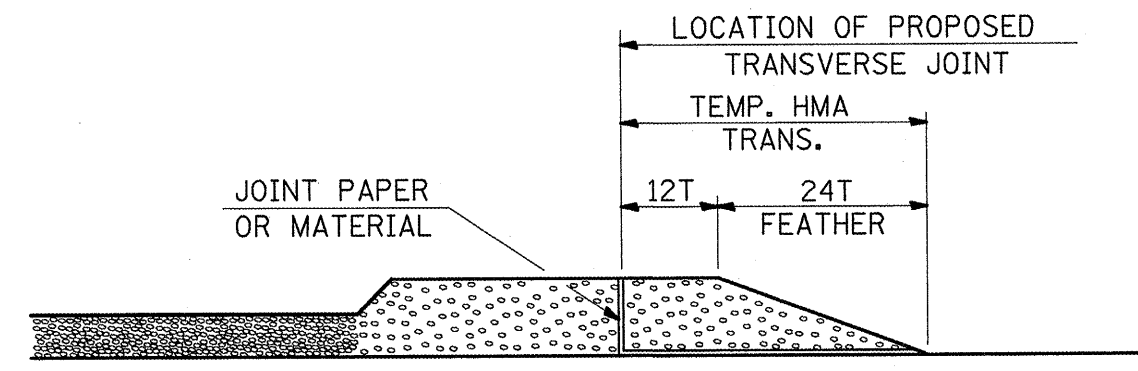
• (12-3)RS-2,(4-5)RS-3

# TEMPORARY HOT-MIX ASPHALT TRANSITIONS



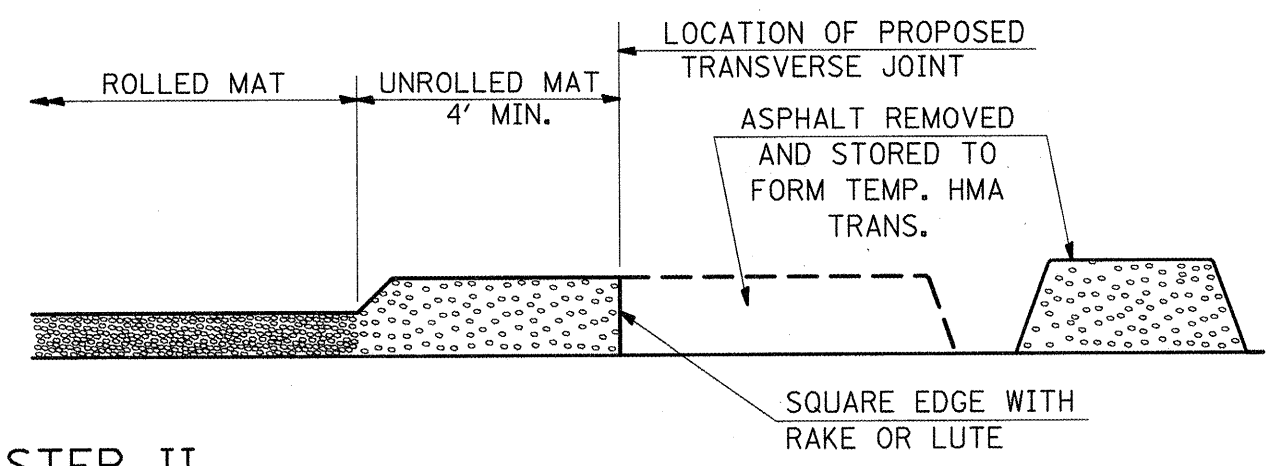
## STEP I

1. PLACE HOT-MIX ASPHALT MAT, LENGTH 36 TIMES THE THICKNESS OF THE MAT BEING PLACED PAST THE PROPOSED TRANSVERSE JOINT LOCATION USING NORMAL OPERATING PROCEDURES.
2. EXTREME CARE SHOULD BE TAKEN TO MAINTAIN ENOUGH MATERIAL IN FRONT OF THE SCREED TO MAINTAIN REQUIRED PAVING DEPTH.



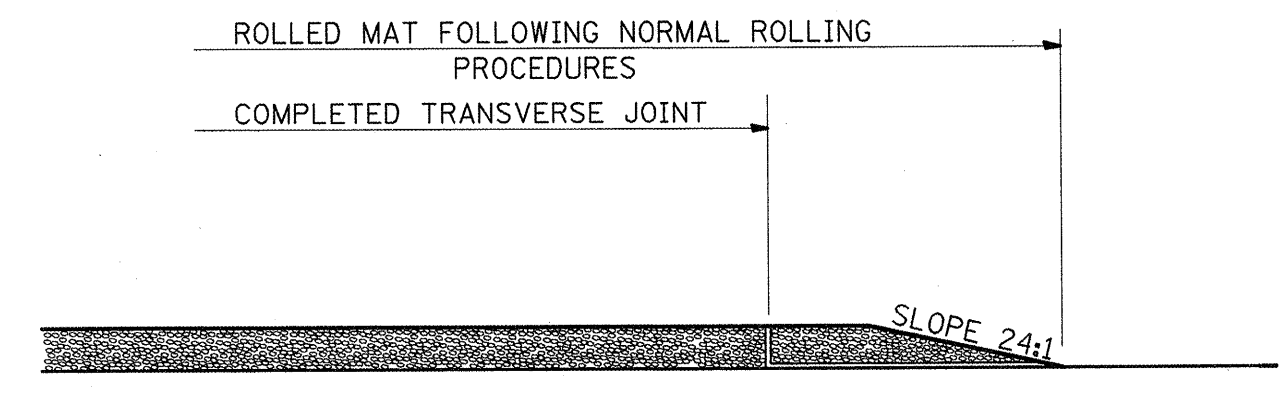
## STEP III

1. JOINT PAPER OR OTHER PRESELECTED JOINT MATERIAL IS THEN PLACED IN THE CLEARED AREA AND THE EXCESS ASPHALT USED TO HAND FORM A TRANSITION TO THE DIMENSIONS SHOWN ABOVE.
2. NOTE THAT IN CONSTRUCTING THE TRANSITION, THE MAT DEPTH IS CONTINUED AS PART OF THE TRANSITION BEFORE FORMING THE FEATHER.



## STEP II

1. MOVE THE PAVER OUT OF THE WAY AND REMOVE THE ASPHALT FROM THE AREA OF THE PROPOSED TEMPORARY HOT-MIX ASPHALT TRANSITION.
2. SQUARE UP THE END OF THE MAT WITH A RAKE OR LUTE.
3. NOTE THAT THE MAT WITHIN 4' OF THE END OF JOINT IS NOT TO BE ROLLED AT THIS TIME.



## STEP IV

1. COMPLETE TEMPORARY TRANSITION BY ROLLING.
2. TO RESUME PAVING, AT THE JOINT, REMOVE TEMPORARY TRANSITION AND DISPOSE OF THE MATERIAL ACCORDING TO ART. 202.03 OF THE STD. SPECS. (COST INCLUDED IN THE CONTRACT).
3. CONSTRUCTING THE TEMPORARY TRANSITIONS WILL NOT BE PAID FOR SEPARATELY IN ACCORDANCE WITH ARTICLE 406.14 OF THE STANDARD SPECIFICATIONS.

REVISIONS	
REDRAWN	2-15-89
REVISED	8-16-94
REVISED	01-09-07
REVISED	

STD. 9-26

PLOT DATE = 12/1/2008  
 FILE NAME = c:\pwwork\yandev\workorder\43648\43648.dwg  
 PLOT SCALE = 1/8"=1'-0"  
 USER NAME = mcorcor

