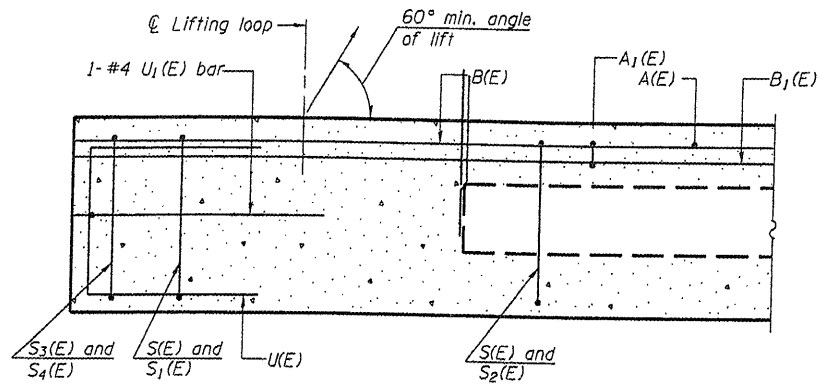
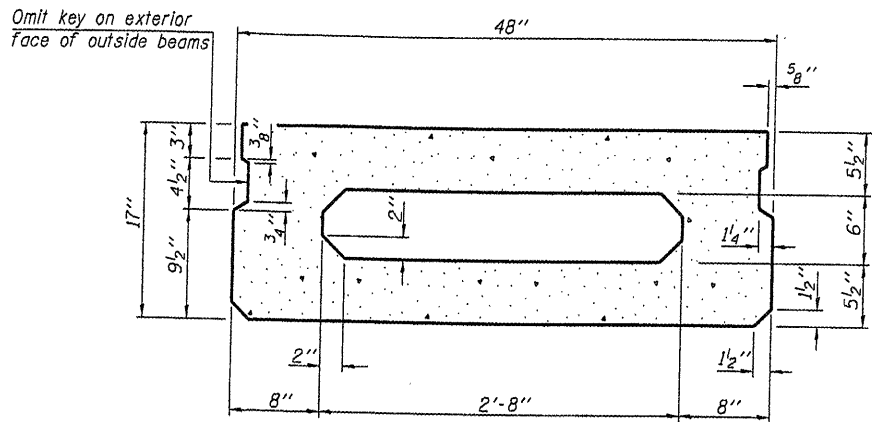


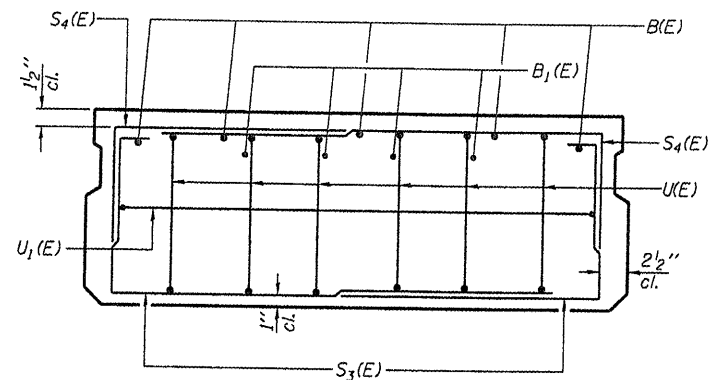
L:\Jobs\IDOT BBS\6956 BBS Various\Various\6956\05\CADD\Struc\Jackson\_05-16118-00-BR.dgn



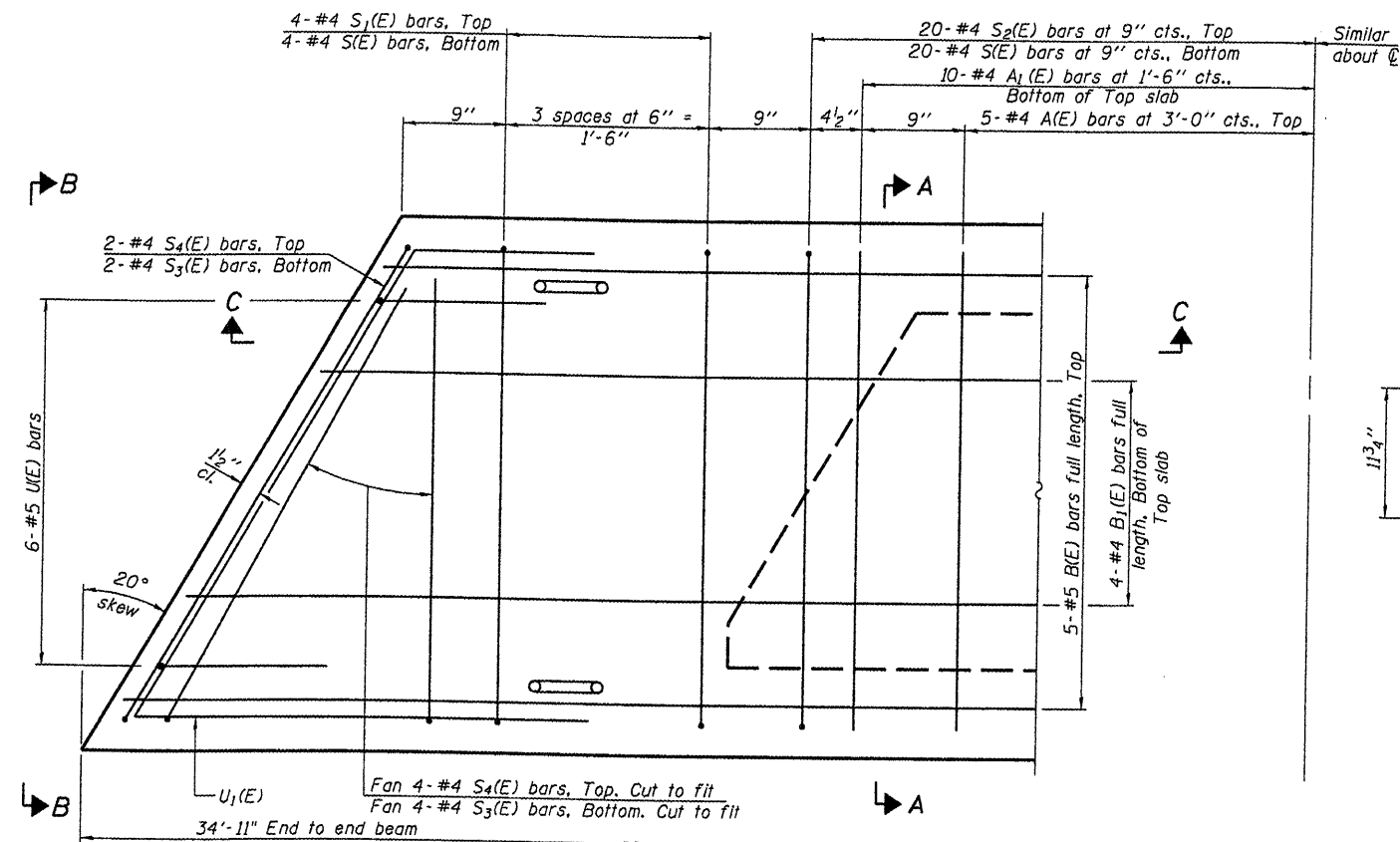
SECTION C-C



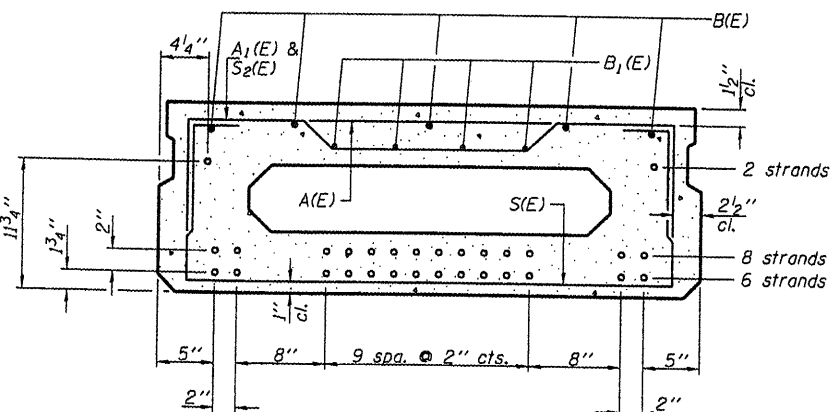
SECTION A-A  
(Showing dimensions)



VIEW B-B



PLAN VIEW



SECTION A-A  
(Showing reinforcement and permissible strand locations)

Note: Place the number of strands specified in each row symmetrically about the centerline of beam in the permissible strand locations shown.

BAR LIST  
ONE BEAM ONLY  
(For information only)

Bar	No.	Size	Length	Shape
A(E)	10	#4	3'-7"	—
A1(E)	40	#4	3'-10"	—
B(E)	5	#5	34'-8"	—
B1(E)	4	#4	34'-8"	—
S(E)	48	#4	6'-9"	U
S1(E)	8	#4	5'-3"	U
S2(E)	40	#4	5'-6"	U
S3(E)	12	#4	4'-2"	U
S4(E)	12	#4	3'-5"	U
U(E)	12	#5	3'-8"	C
U1(E)	2	#4	7'-6"	C

Note: Spacing of S(E) and S2(E) bars may be adjusted up to 4" in the immediate area of the transverse tie diaphragms to miss the block outs for the transverse ties.

USER NAME = dhaber-ling	DESIGNED - SDS	REVISED
PLOT SCALE = 0.2:1.119 1/4" IN.	DRAWN - DLH	REVISED
PLOT DATE = 9/8/2008	CHECKED - CWC	REVISED
	DATE = 5-16-08	REVISED

**WHKS & CO.**  
ENGINEERING

7018 KINGSMILL CT.,  
SPRINGFIELD, IL  
(217) 483-9457  
DESIGN FIRM #184001036

STATE OF ILLINOIS  
DEPARTMENT OF TRANSPORTATION

PPC DECK BEAM DETAILS (17" x 4'-0")  
TWP. ROUTE 75 OVER GLENN CREEK

I.R. RT.E.	SECTION	COUNTY	TOTAL SHEET NO.
75	05-16118-00-BR	JACKSON	13 B
S.N.	CONTRACT		99342
FED. ROAD DIST. NO. = [ILLINOIS] FED. AID PROJECT			

SCALE: SHEET NO. 8 OF 13 SHEETS STA. 3+00