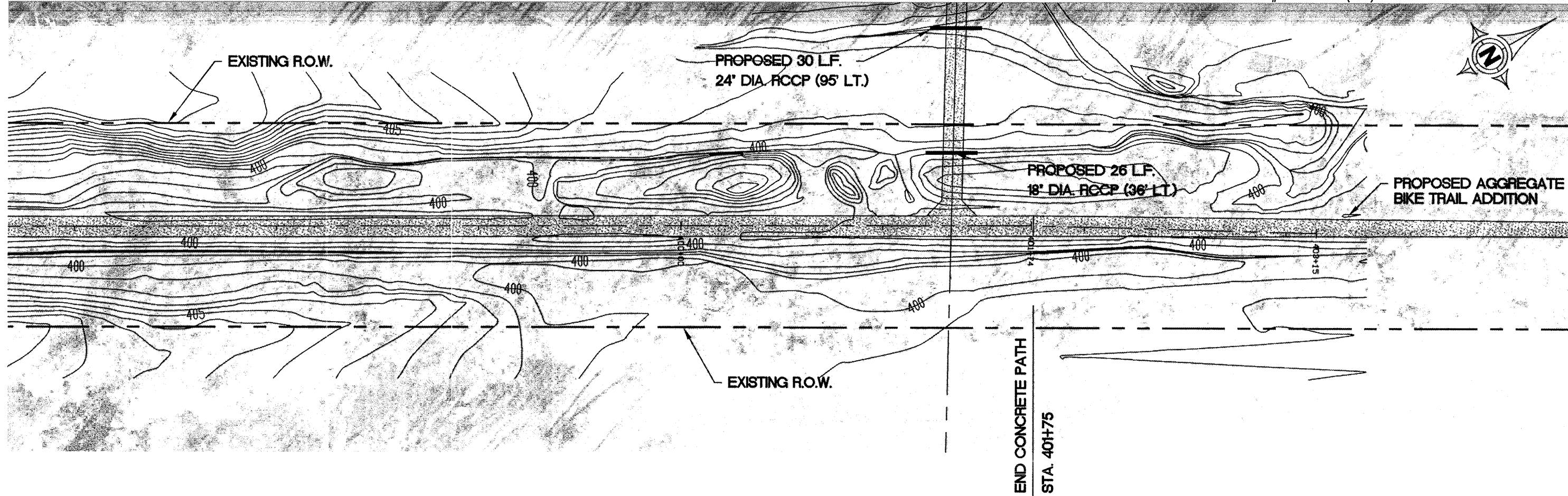


**NOTE:**  
ALL NECESSARY TREE REMOVAL SHALL BE CONSIDERED PART OF GRADING AND SHAPING ROADWAY.

**ELDORADO SPORTS COMPLEX**  
**END SIDEWALK 114' LT. OF CL**

ROUTE	SECTION	COUNTY	TOTAL SHEETS	SHEET NUMBER
	08-00037-00-BT	SALINE	47	27
ELDORADO - IDOT		BIKE/PEDESTRIAN PATH		

PROJECT # TCSP-IL08(012) CONTRACT NO. 99345



18 Dec 2008 - 1:32pm X:\2005\05138\loc\Eldorado Plans\05138 Eldorado Base.dwg: Layout Tab STA 397+00 (27)

