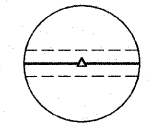
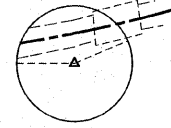


NW 1/4, SEC 1, T. 9 S., R. 8 E., 3RD P.M.



P.O.T. STA. 6+67.14
1/2" Ø IRON PIN (SET)
N. 4,943.41
E. 4,819.35

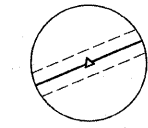


P.I. STA. 9+74.49
1/2" Ø IRON PIN (TO BE SET)
N. 5,054.03
E. 5,106.10

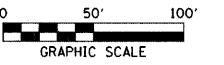
CURVE DATA
PI Sta. 9+74.49
 $\Delta = 22^\circ 38' 27''$ (LT)
D = 7° 00' 00"
T = 163.86'
R = 816.51'
L = 323.44'
E = 16.24'
PC Sta. 8+10.63
PT Sta. 11+34.07
MAX S.E. = 3.00%
S.E. TRANSITIONS:
STA. 7+37.39 TO STA. 8+28.39
STA. 11+16.31 TO STA. 12+07.31

STATION 9+98
PRECAST PRESTRESSED CONCRETE DECK BEAM
BRIDGE, SINGLE SPAN @ 50'-0"
27'-0" RDWY, SKEW = 10°, S.E. = 3.0%
PROPOSED STRUCTURE NO. 030-3126

18' LT. STA. 12+00 F.E.
PIPE CULVERTS, CL. D. TY. 1, 15"
LENGTH = 32 FT. (C.S.C.P.)



P.O.T. STA. 13+43.88
1/2" Ø IRON PIN (SET)
N. 5,312.36
E. 5,376.08



DATE	BY	DATE	BY
SURVEYED		CHECKED	
ALIGNMENT		PROFILE	
NOTE BOOK		NO. NOTED	
NO.		NO.	
PLAN		PROFILE	
NO.		NO.	

ST. JOSEPH CEMETERY ROAD

IMPROVEMENT BEGINS
STATION 7+75

24' RT. STA. 8+80 F.E.
PIPE CULVERTS, CL. D. TY. 1, 15"
LENGTH = 40 FT. (C.S.C.P.)
EXISTING CMP TO BE REMOVED.

STA. 10+60 RT. & LT.
F.E. TO BE RELOCATED
EXISTING CMP TO BE REMOVED.

IMPROVEMENT ENDS
STATION 12+25

18' RT. STA. 12+00 F.E.
PIPE CULVERTS, CL. D. TY. 1, 15"
LENGTH = 32 FT. (C.S.C.P.)

ENTRANCES TO BE BUILT

RT. STA. 8+80 F.E. -11.0% EARTH 24' SURF.
LT. STA. 12+00 F.E. -1.6% EARTH 24' SURF.
RT. STA. 12+00 F.E. 0.0% EARTH 24' SURF.
QUANTITIES INCLUDED IN EARTHWORK TABLE.

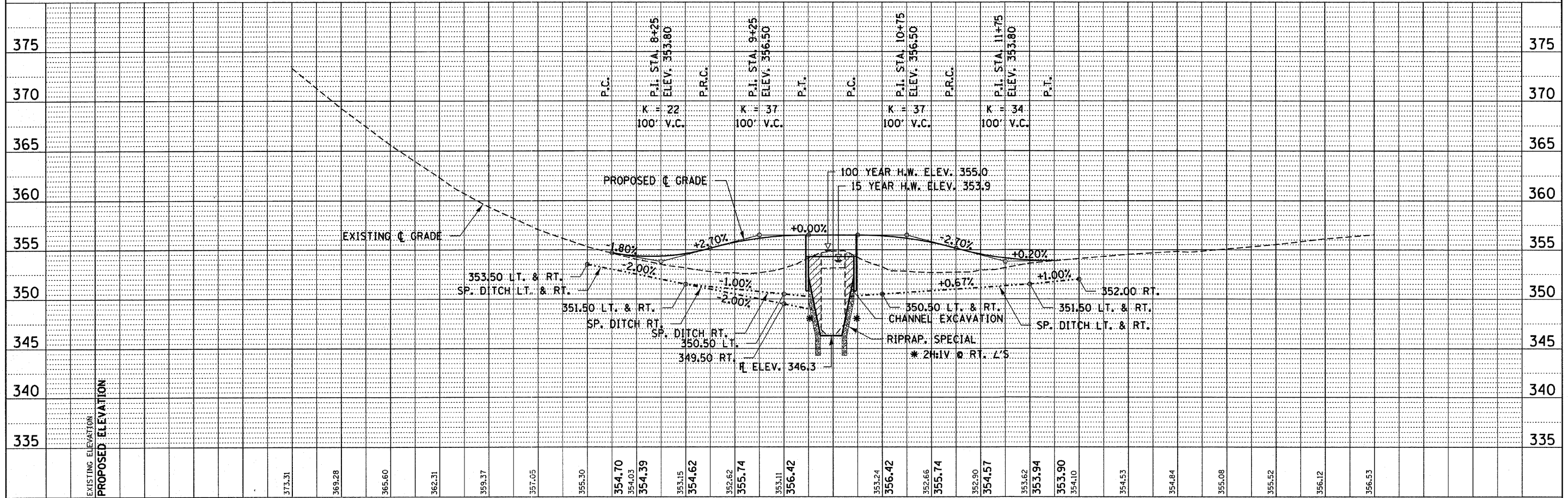
CHANNEL EXCAVATION

THE CHANNEL SHALL BE EXCAVATED AS SHOWN IN THE PLANS WITH 2:1 SIDE SLOPES WITHIN THE LIMITS OF THE PROPOSED STRUCTURE, THEN TAPER TO THE EXISTING CHANNEL AT THE R.O.W. LINES. ONLY SUITABLE EXCAVATED MATERIAL SHALL BE USED IN THE EMBANKMENT.

EXISTING STRUCTURE NO. 030-3037

STATION 10+00 - SINGLE SPAN CAST-IN-PLACE CONCRETE SLAB ON STEEL WIDE FLANGE BEAM BRIDGE ON STEEL PILE BENT ABUTMENTS WITH STONE BACKING, 24.0' FC-FC, ABUTS; 18.9' o-o, DECK

NW 1/4, SEC 1, T. 9 S., R. 8 E., 3RD P.M.



DATE	BY	DATE	BY
SURVEYED		CHECKED	
GRADES		PROFILE	
NOTE BOOK		NO. NOTED	
NO.		NO.	
PLAN		PROFILE	
NO.		NO.	

FILE NAME = 080190-shr-ppL.dgn	USER NAME =	DESIGNED - J.W.F.	REVISED -	<p align="center">STATE OF ILLINOIS GALLATIN COUNTY HIGHWAY DEPARTMENT</p> <p align="center">HLR HAMPTON, LENZINI & RENWICK, INC. CIVIL & STRUCTURAL ENGINEERS LAND SURVEYORS</p>	<p align="center">PLAN & PROFILE EQUALITY ROAD DISTRICT</p>	T.R. 98	SECTION 06-04109-00-BR	COUNTY GALLATIN	TOTAL SHEETS 17	SHEET NO. 3
PLOT SCALE =	CHECKED - S.W.M.	REVISED -	SCALE: 50			SHEET NO. 1 OF 1 SHEETS	CONTRACT NO. 99353			
PLOT DATE = 11/5/2008	DATE - 07/16/08	REVISED -	STA. 6+67.14			TO STA. 13+43.88	ILLINOIS FED. AID PROJECT			