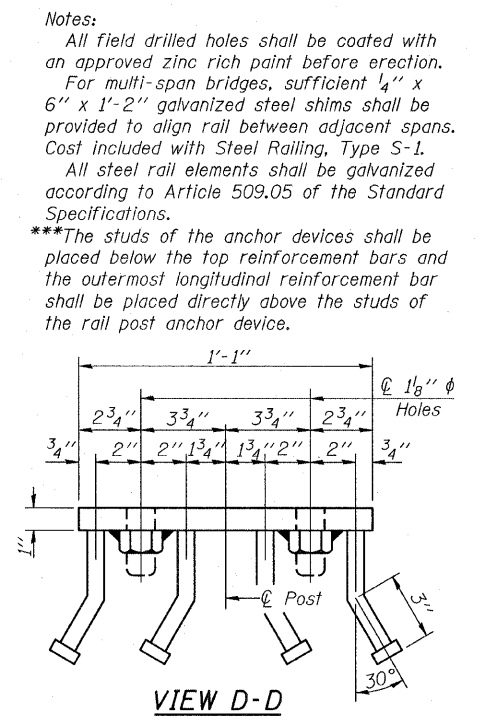
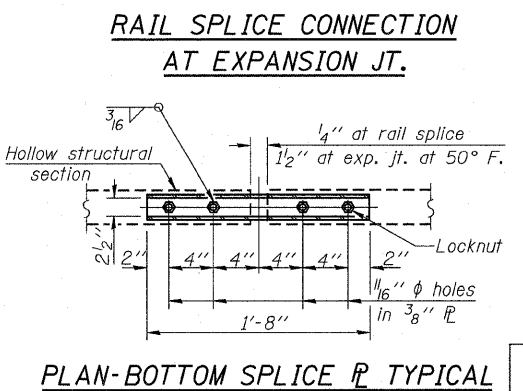
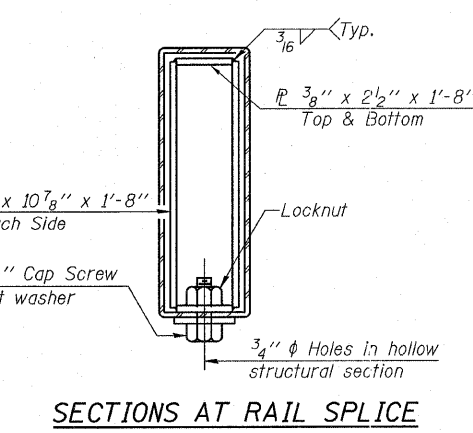
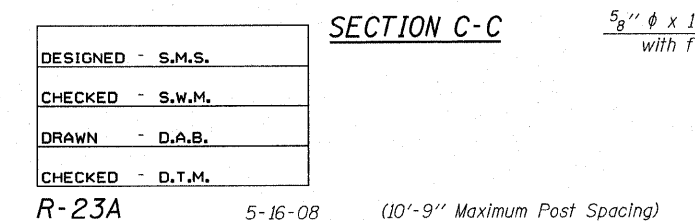
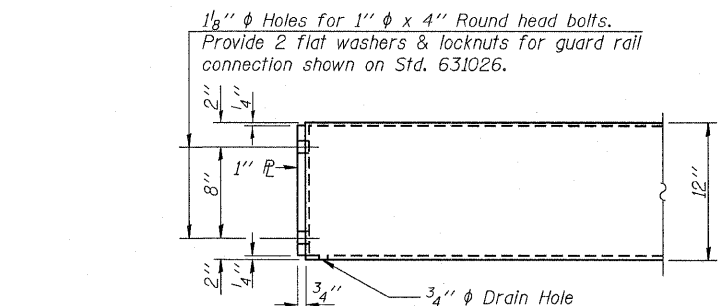
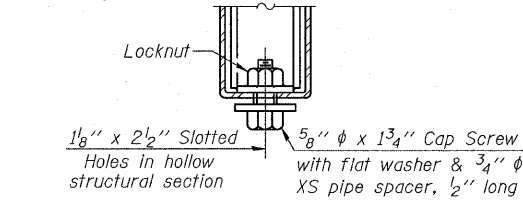


SECTION AT RAILING POST

**Whenever the lower insert assemblies interfere with strand locations, the #3 bars shall be cut and adjusted in order to allow raising or lowering of the lower inserts. Maximum adjustment not to exceed 1/2".



BILL OF MATERIAL

Item	Unit	Quantity
Steel Railing, Type S-1	Foot	96

RAILING DETAILS
STRUCTURE NO. 030-3126

DESIGNED - S.M.S.
CHECKED - S.W.M.
DRAWN - D.A.B.
CHECKED - D.T.M.
R-23A

5-16-08 (10'-9" Maximum Post Spacing)

HAMPTON, LENZINI & RENWICK, INC.
CIVIL & STRUCTURAL ENGINEERS
LAND SURVEYORS
3085 STEVENSON DRIVE, SUITE 201
SPRINGFIELD, ILLINOIS 62703
(217) 546-3400
PROJECT NUMBER: 08.0190.130 DATE: 10/14/08

SHEET NO.	T.R.	SECTION	COUNTY	TOTAL SHEETS	SHEET NO.
98	06-04109-00-BR	EQUALITY ROAD DISTRICT	GALLATIN	17	13
SHEETS			CONTRACT NO. 99353		
ILLINOIS FED. AID PROJECT					