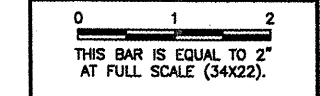



CA007

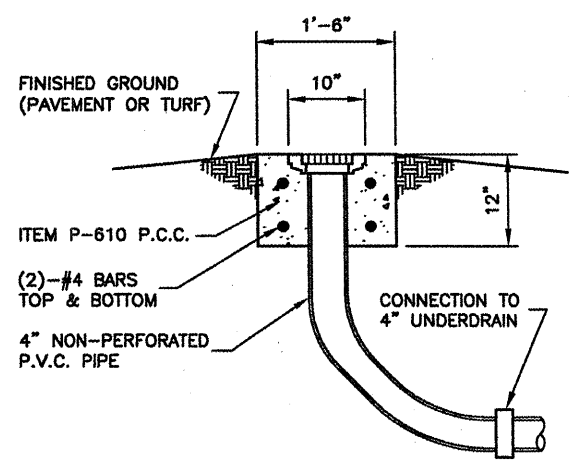
REVISIONS		
NUMBER	BY	DATE



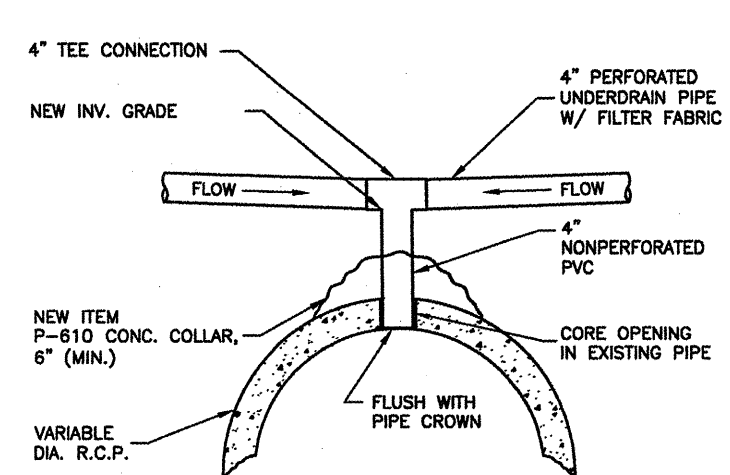

 SPRINGFIELD AIRPORT AUTHORITY
 ABRAHAM LINCOLN CAPITAL AIRPORT
 SPRINGFIELD, ILLINOIS
 WIDEN TAXIWAY G - PHASE 2
 UNDERDRAIN DETAILS

© Copyright CMT, Inc.
CMT
 CRAWFORD, MURPHY & TILLY, INC.
 CONSULTING ENGINEERS
 License No. 184-00063

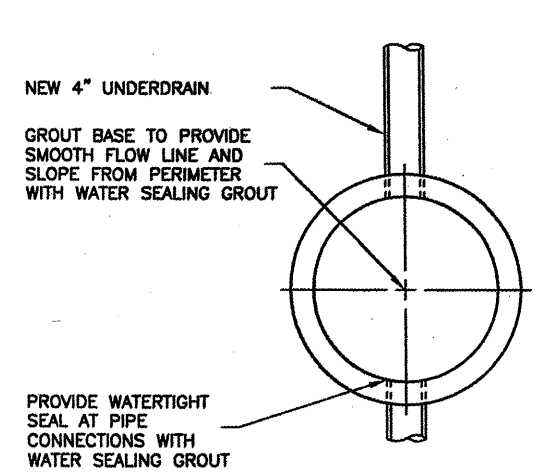
DESIGN BY:	CBG
DRAWN BY:	CMT
CHECKED BY:	<i>REW</i>
APPROVED BY:	<i>REW</i>
DATE:	01/30/2009
JOB No:	07035-09-00
IL PROJ. NO.	SPI-3860
AIP PROJ. NO.	3-17-0096-XX
SHEET	33 OF 65 SHEETS



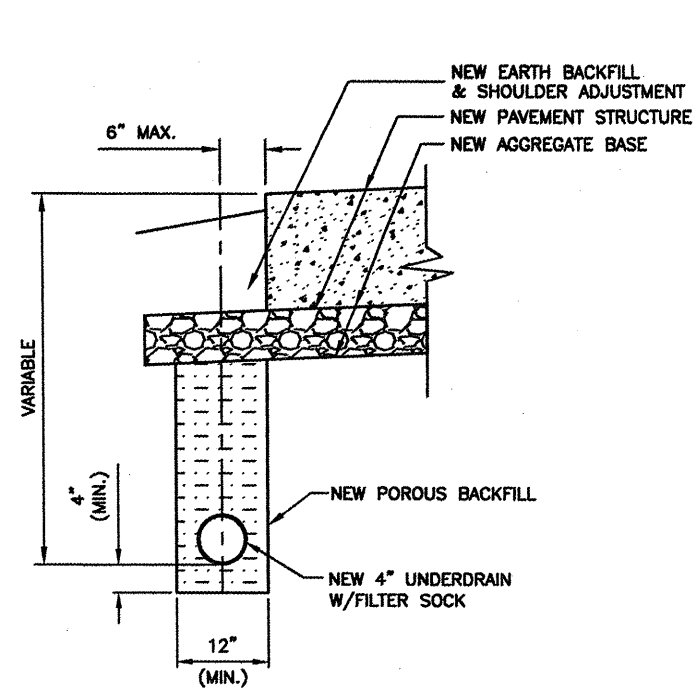
SIDE VIEW
UNDERDRAIN CLEAN-OUT DETAIL (TYPE 1)
 N.T.S.



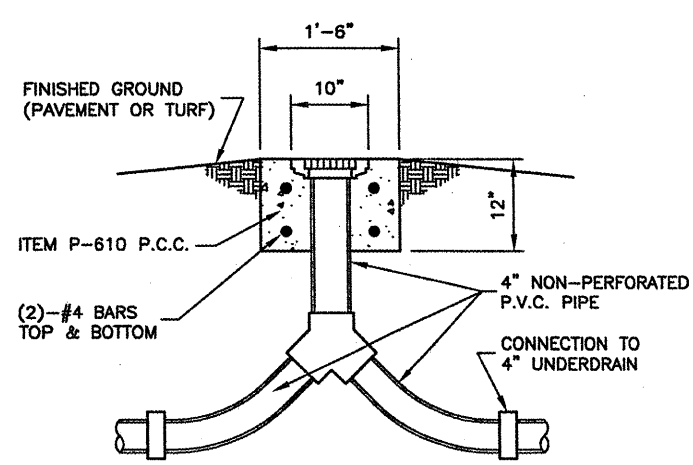
UNDERDRAIN DIRECT TOP CONNECTION DETAIL
 N.T.S.



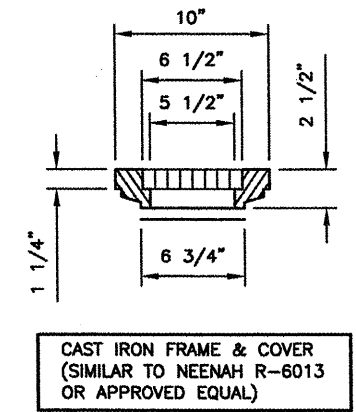
PLAN
UNDERDRAIN CLEAN-OUT DETAIL
 N.T.S.



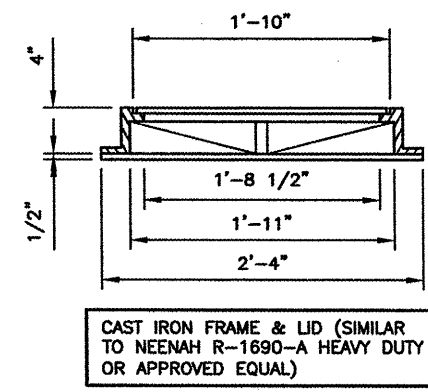
TYPICAL UNDERDRAIN DETAIL PAVEMENT EDGE
 N.T.S.



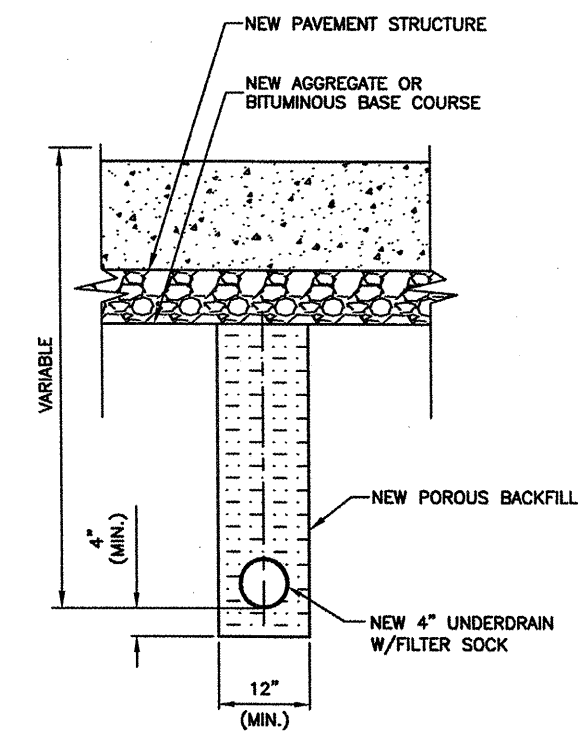
SIDE VIEW
UNDERDRAIN CLEAN-OUT DETAIL (TYPE 2)
 N.T.S.



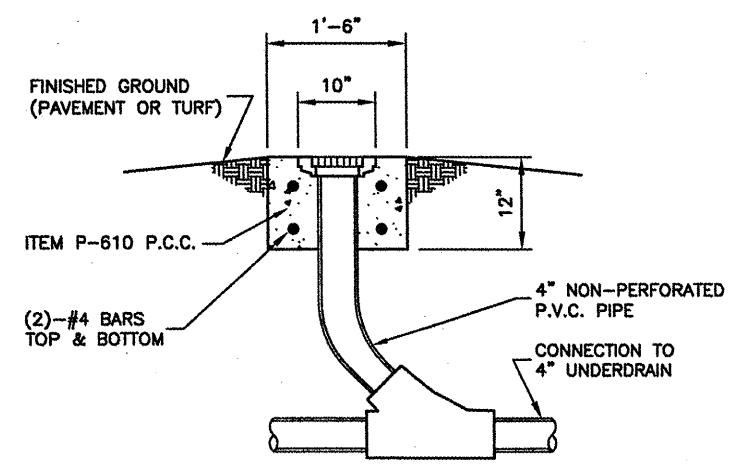
FRAME & COVER
 (SIMILAR TO NEENAH R-6013 OR APPROVED EQUAL)



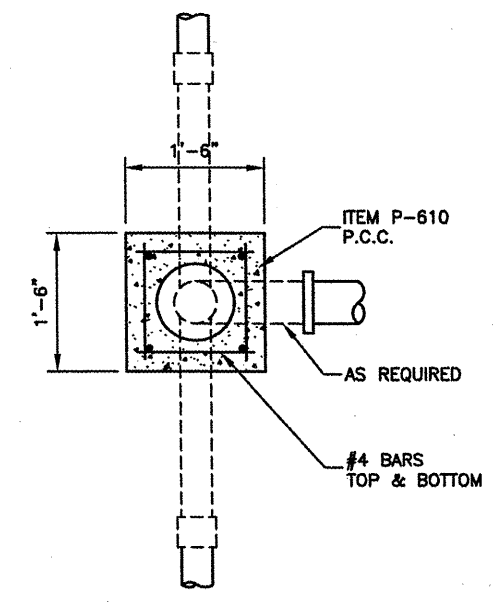
FRAME & LID
 (SIMILAR TO NEENAH R-1690-A HEAVY DUTY OR APPROVED EQUAL)



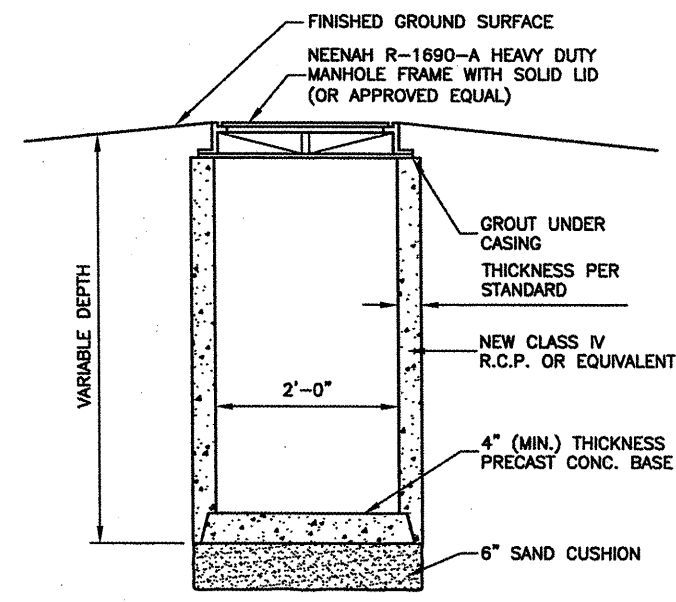
TYPICAL UNDERDRAIN DETAIL BELOW PAVEMENT
 N.T.S.



SIDE VIEW
UNDERDRAIN CLEAN-OUT DETAIL (TYPE 3)
 N.T.S.



UNDERDRAIN CLEAN-OUT DETAIL
 N.T.S.



UNDERDRAIN COLLECTION STRUCTURE DETAIL
 N.T.S.

UNDERDRAIN NOTE
 DURING UNDERDRAIN CONSTRUCTION, CARE SHALL BE TAKEN TO ENSURE GOOD DRAINAGE BETWEEN THE SUB-BASE AND THE POROUS BACKFILL MATERIAL WHICH WILL AFFECT DRAINAGE TO THE UNDERDRAIN SHALL BE REMOVED PRIOR TO THE PLACEMENT OF PROPOSED POROUS BACKFILL. ALL COST FOR THIS WORK SHALL BE CONSIDERED INCIDENTAL.