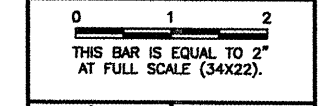




CA007

REVISIONS		
NUMBER	BY	DATE

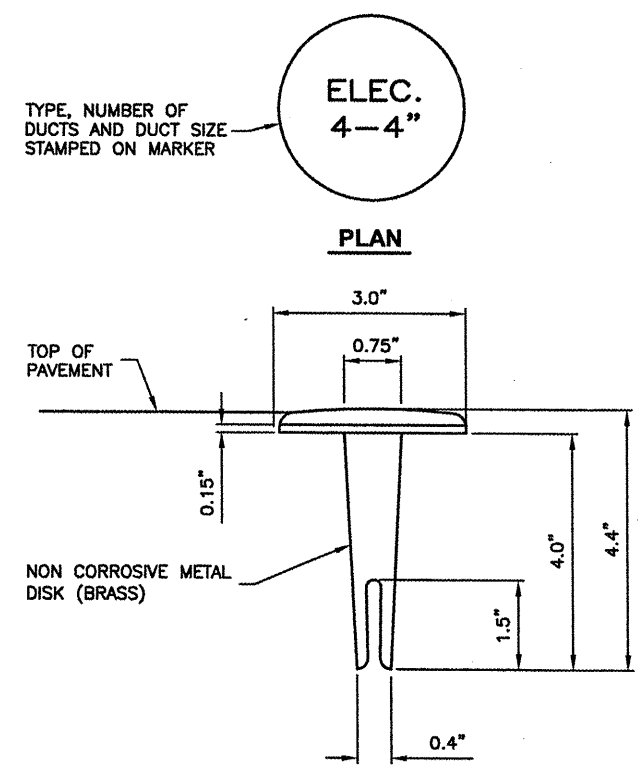



 SPRINGFIELD AIRPORT AUTHORITY
 ABRAHAM LINCOLN CAPITAL AIRPORT
 SPRINGFIELD, ILLINOIS

WIDEN TAXIWAY G - PHASE 2
 DUCT BANK DETAIL


 CRAWFORD, MURPHY & TILLY, INC.
 CONSULTING ENGINEERS
 License No. 94-000618

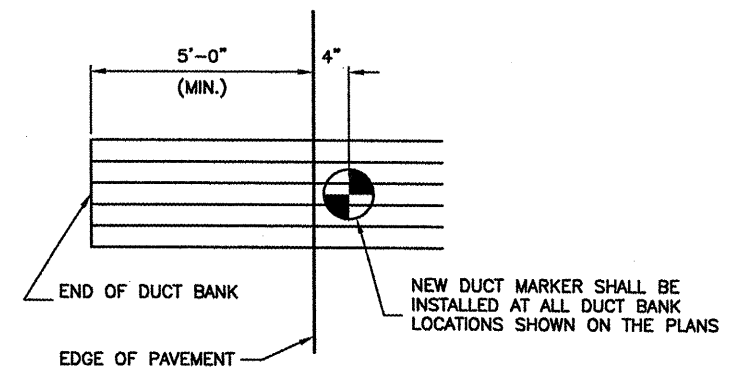
DESIGN BY:	CBG
DRAWN BY:	CMT
CHECKED BY:	REN
APPROVED BY:	REN
DATE:	01/30/2009
JOB No:	07035-09-00



PLAN

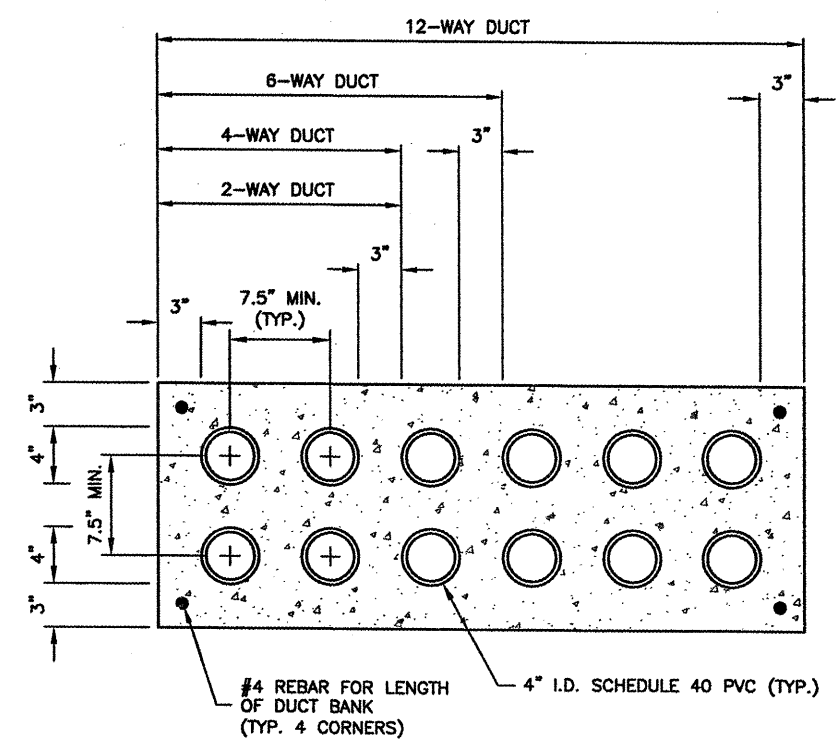
SECTION

DUCT MARKER DETAILS
N.T.S.



MARKER PLACEMENT

DUCT MARKERS SHALL BE RECESSED AND GROUTED INTO THE PAVEMENTS.



DUCT BANK DETAIL
N.T.S.

DUCT BANK NOTES

1. DIMENSIONS SHOWN ARE MINIMUM.
2. TOP OF CONCRETE ENCASEMENT TO BE NOT LESS THAN 18" BELOW FINISHED SUBGRADE.
3. DUCT CONCRETE SHALL BE ITEM 610 STRUCTURAL P.C.C. CONCRETE.
4. ALL DUCT SHALL BE 4" INSIDE DIAMETER.
5. LOCATIONS SHOWN ARE APPROXIMATE. DUCT BANKS SHALL BE INSTALLED AT LOCATIONS DESIGNATED BY THE ENGINEER.
6. CONTRACTOR SHALL INSTALL DUCT BANKS AT A DEPTH WHICH WILL NOT CONFLICT WITH ELEVATION SENSITIVE UTILITIES.
7. A PULL WIRE SHALL BE PROVIDED IN EACH UNUSED CONDUIT. UNUSED DUCT SHALL BE SEALED WITH PVC PLUGS/CAPS TO THE SATISFACTION OF THE ENGINEER.
8. DUCT BANKS SHALL EXTEND A MINIMUM OF 5' BEYOND THE NEW EDGE OF PAVEMENT.