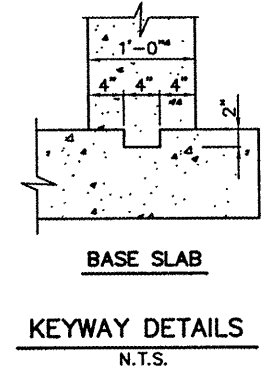
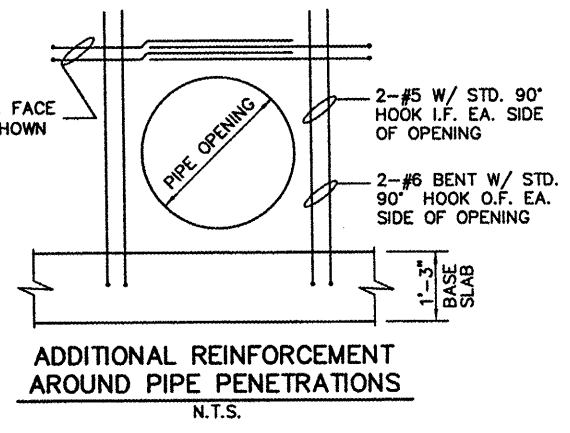
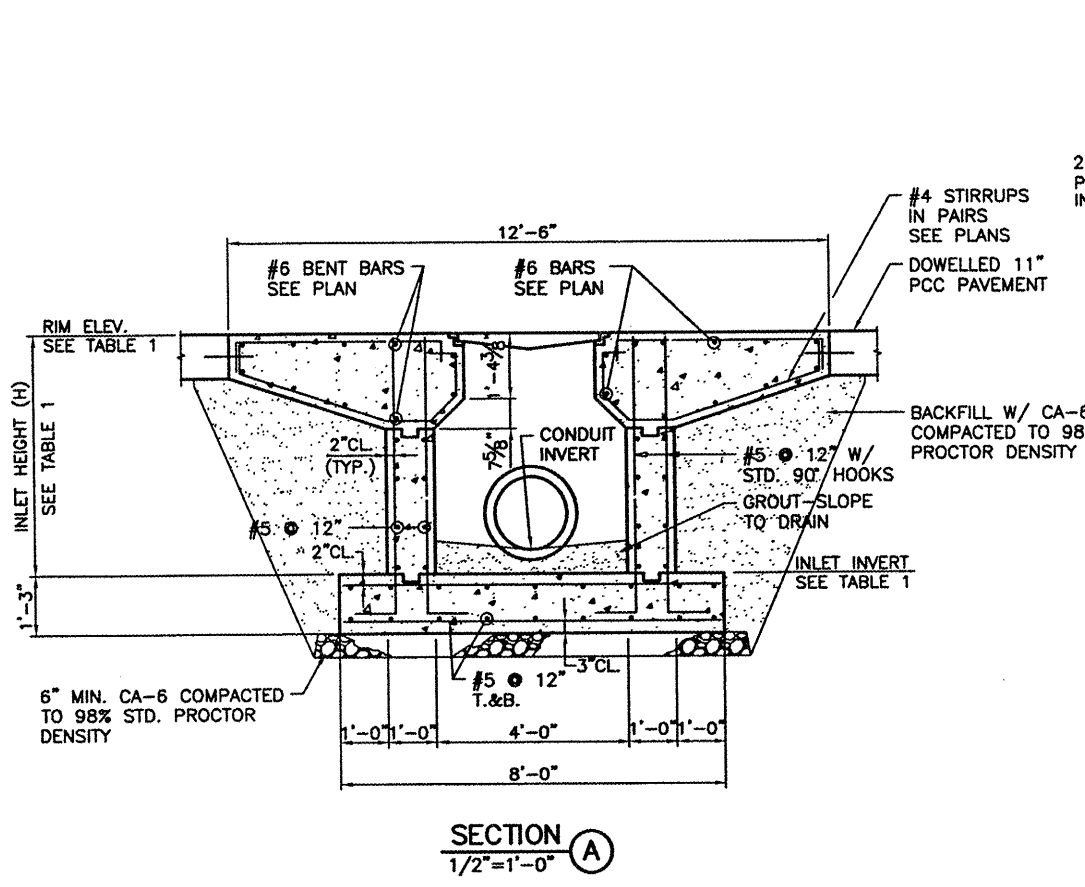


TABLE 1

INLET	IN-1	IN-2	IN-3
REFERENCE POINT	76+01.25	77+51.25	79+51.25
OFFSET	CL	CL	CL
RIM ELEVATION	584.46	584.09	583.31
DIAMETER (SKEW)			
"A"		12" SS	12" SS
"B"		4" UD	4" UD
"C"	12" SS	12" SS	
"D"		4" UD	4" UD
"E"		18" SS (108")	
INVERT			
"A"		579.65	580.65
"B"		580.92	580.67
"C"	580.40	579.65	
"D"		580.91	580.66
"E"		579.65	
INLET INVERT	579.90	579.15	580.15
INLET HEIGHT (H)	4'-7"	4'-11"	3'-2"



CA008

REVISIONS

NUMBER	BY	DATE

0 1 2
 THIS BAR IS EQUAL TO 2" AT FULL SCALE (34X22).



SPRINGFIELD AIRPORT AUTHORITY
 ABRAHAM LINCOLN CAPITAL AIRPORT
 SPRINGFIELD, ILLINOIS

RECONSTRUCT AND EXPAND THE SOUTHEAST RAMP
 INLET - SPECIAL DETAIL

CMT
 CRAWFORD, MURPHY & TILLY, INC.
 CONSULTING ENGINEERS
 License No. 184-000673

DESIGN BY: WLB
 DRAWN BY: DJW
 CHECKED BY: RLV
 APPROVED BY: *RLV*
 DATE: JANUARY 27, 2009
 JOB No: 08035-08

IL PROJ. NO. SPI-3885
 AIP PROJ. NO. 3-17-0096-XX
 SHEET 26 OF 40 SHEETS

DESIGN CRITERIA

L.L. = BOEING AIRCRAFT 727-ADV200
 WATER TABLE AT TOP OF INLET
 NET ALLOWABLE SOIL BEARING PRESSURE = 2500 PSF

GENERAL NOTES

- THE INLET GRATE SHALL BE SUPPORTED ON ALL FOUR SIDES.
- ALL REINFORCEMENT BARS SHALL CONFORM TO ASTM A615 GRADE 60 AND SHALL BE CLEAN AND FREE OF GREASE, SCALING RUST AND OTHER FOREIGN MATERIALS.
- INLET MAY BE CONSTRUCTED BY CAST-IN-PLACE CONCRETE OR PRECAST CONCRETE. PRECAST CONCRETE INLETS SHALL BE CONSTRUCTED TO THE LINES, DIMENSIONS AND DETAILS SHOWN ON THIS SHEET.
- CAST-IN-PLACE CONCRETE AND PRECAST CONCRETE FOR THE INLETS SHALL HAVE A MINIMUM 14 DAYS COMPRESSIVE STRENGTH OF 3500 PSI.
- THE CONTRACTOR SHALL VERIFY THE LOCATION AND SIZE OF PIPE OPENINGS WITH TABLE 1, THIS SHEET.
- ALL FOOTING EXCAVATIONS SHALL BE CLEAN FREE OF DEBRIS, STANDING WATER AND LOOSE SOIL AND SHALL BE INSPECTED BY THE ENGINEER PRIOR TO THE PLACEMENT OF CONCRETE OR SUBBASE.
- CONCRETE SHALL NOT BE PLACED OVER FROZEN OR MUDDY SOIL.
- ADDITIONAL REINFORCEMENT FOR PIPE PENETRATIONS NOT REQUIRED FOR 4" DIA. PIPES OR LESS.