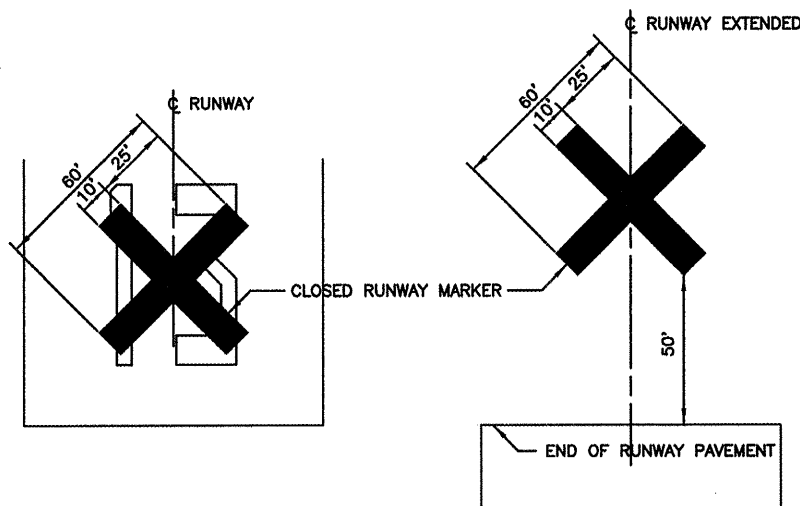


CONSTRUCTION PROCEDURE NOTES

1. ALL CONTRACTOR EMPLOYEES WILL PARK THEIR PERSONAL VEHICLES IN THE AREA DESIGNATED BY THE AIRPORT MANAGER FOR USE AS A VEHICLE PARKING AREA. THE CONTRACTOR WILL BE RESPONSIBLE FOR TRANSPORTING EMPLOYEES TO THE PROPOSED CONSTRUCTION SITE. ONLY AUTHORIZED CONTRACTOR VEHICLES WILL BE ALLOWED ON THE AIR OPERATIONS AREA OF THE AIRPORT AND ON THE CONSTRUCTION SITE.
2. FLAGS WILL BE REQUIRED ON ALL CONTRACTOR'S VEHICLES AND EQUIPMENT USED ON THE AIRPORT OPERATIONS AREA AND CONSTRUCTION SITE. THE FLAGS SHALL BE THREE (3) FOOT SQUARE CHECKERED FLAGS (INTERNATIONAL ORANGE AND WHITE) DISPLAYED IN FULL VIEW ABOVE THE VEHICLE.
3. THE CONTRACTOR WILL USE THE DESIGNATED HAUL ROUTE AND EQUIPMENT STORAGE AREA SHOWN ON THIS SHEET. IT WILL BE THE CONTRACTOR'S RESPONSIBILITY TO MAINTAIN THE DESIGNATED HAUL ROUTE AND EQUIPMENT STORAGE AREA FOR THE DURATION OF THE PROJECT. ANY DAMAGE TO EXISTING PAVEMENTS USED TO HAUL MATERIAL TO THE CONSTRUCTION SITE WILL BE REPAIRED BY THE CONTRACTOR AT HIS OWN EXPENSE TO THE SATISFACTION OF THE AIRPORT MANAGER AND THE RESIDENT ENGINEER.
4. THE CONTRACTOR SHALL FURNISH, MAINTAIN, AND REMOVE ALL BARRICADES REQUIRED TO DELINEATE THE WORK AREA AND KEEP AIRCRAFT FROM ENCRANCHING INTO SAID WORK AREA. THIS REQUIREMENT SHALL BE CONSIDERED INCIDENTAL TO THE CONTRACT AND NO ADDITIONAL COMPENSATION WILL BE ALLOWED.
5. THE CONTRACTOR SHALL CLOSE RUNWAY 4-22 WHEN ACCOMPLISHING PAVEMENT MARKING ON THE RUNWAY. AT SUCH TIME AS PAVEMENT MARKING IS BEING PERFORMED WITHIN THE AREA 200' EACH SIDE OF THE RUNWAY 13-31 CENTERLINE ON THE CONNECTING TAXIWAYS AND THE RUNWAY 4-22 INTERSECTION, RUNWAY 13-31 SHALL ALSO BE CLOSED.
6. CONSTRUCTION ACTIVITY CONTROL AND OPERATION AREA PROTECTION SHALL BE ACCOMPLISHED IN ACCORDANCE WITH FAA ADVISORY CIRCULAR NO. 150/5370-2E.
7. BARRICADE TAXIWAY C NORTHWEST OF TAXIWAY A AND BARRICADE RUNWAY 4-22 EACH SIDE OF RUNWAY 13-31 TO KEEP AIRCRAFT OFF THESE PAVEMENTS WHILE MARKING RUNWAY 4-22. BARRICADES SHALL ALSO BE PLACED AT CLOSED TAXIWAYS EXITING RUNWAY 13-31.
8. BARRICADE TAXIWAY A AT THE APRON TO CLOSE TAXIWAYS A, C, C1 AND C2 TO TRAFFIC AND MARK THESE TAXIWAYS PAVEMENTS. BARRICADES SHALL ALSO BE PLACED AT CLOSED TAXIWAYS EXITING RUNWAY 13-31. AIRCRAFT SHALL USE TAXIWAY C3 FOR ACCESS TO RUNWAY 13-31.
9. OPEN TAXIWAY A TO TRAFFIC FOR ACCESS TO RUNWAY 13-31 AND BARRICADE TAXIWAY C3 AT THE APRON IN ORDER TO MARK TAXIWAYS C3 AND C EXTENDING TO RUNWAY END 31. BARRICADES SHALL ALSO BE PLACED AT CLOSED TAXIWAYS EXITING RUNWAY 13-31.
10. THE MAXIMUM CONSTRUCTION EQUIPMENT HEIGHT UTILIZED ON THE AIRPORT FOR THIS PROJECT SHALL BE 15'.
11. THIS PROJECT CONSISTS OF WORK TO MARK RUNWAY 4-22 AND TAXIWAYS.
12. THIS PROJECT WILL NOT DISTURB TURFED LAND.

PLACE CLOSED RUNWAY MARKER OVER RUNWAY NUMERALS TO CLOSE RUNWAY 13-31 WHEN WORKING ON RUNWAY 4-22 AND ON THE TAXIWAYS WITHIN 200' EACH SIDE OF THE RUNWAY 13-31 CENTERLINE (TYPICAL EACH END OF RUNWAY)



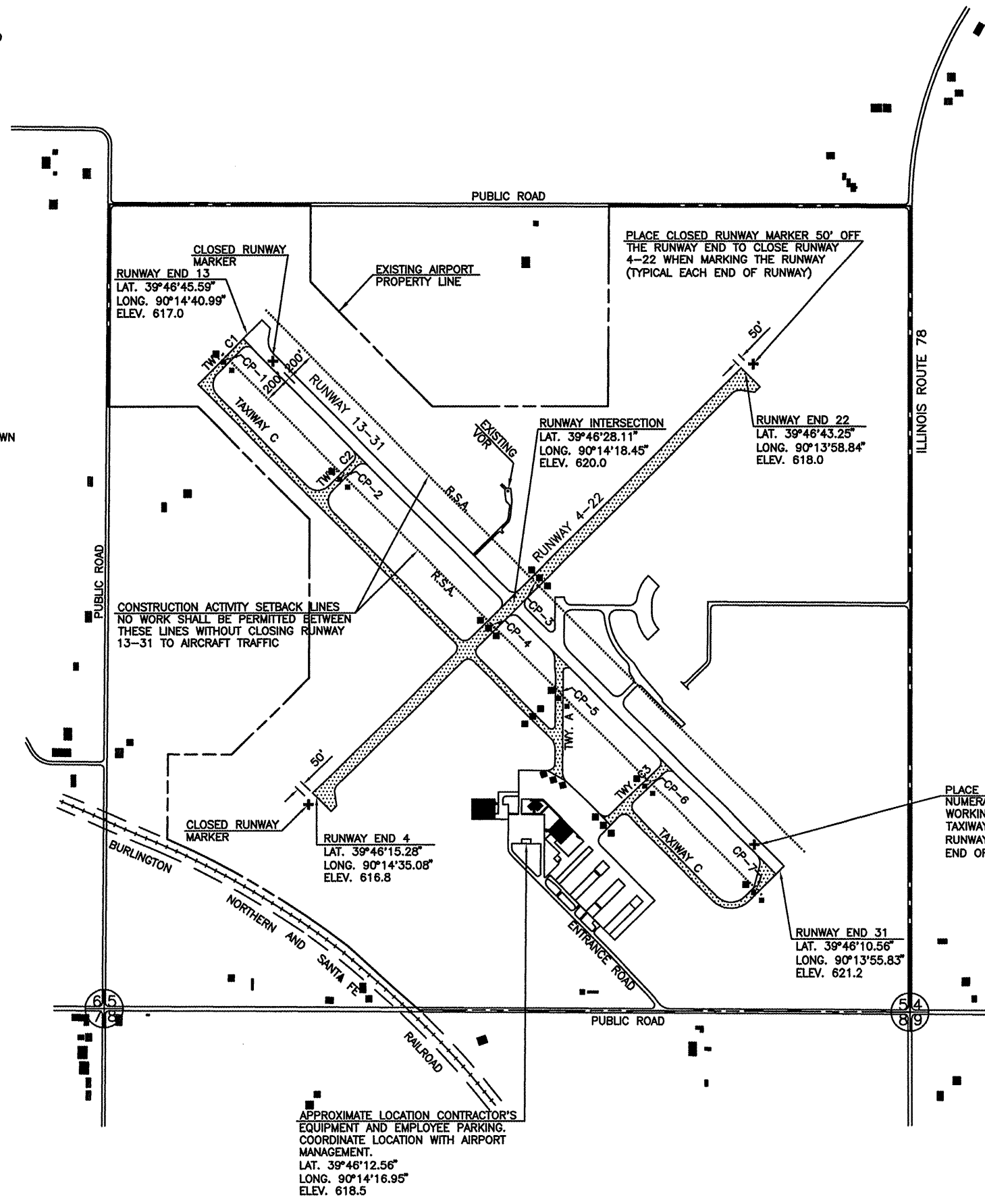
CLOSED RUNWAY MARKER DETAIL

1. CLOSED RUNWAY MARKER SHALL BE YELLOW IN COLOR.
2. CLOSED RUNWAY MARKER SHALL BE PAINTED PLYWOOD, PLASTIC SHEETING WEIGHTED DOWN WITH SANDBAGS, OR OTHER APPROVED MATERIALS ACCEPTABLE TO THE ENGINEER.
3. CONTRACTOR SHALL MAINTAIN MARKERS AS DIRECTED BY THE RESIDENT ENGINEER.
4. THE COST OF FURNISHING, PLACING, MAINTAINING, AND REMOVING CLOSED RUNWAY MARKERS SHALL BE PAID FOR UNDER ITEM AR150530 TRAFFIC MAINTENANCE.

LEGEND

- EXISTING BUILDING
- - - AIRPORT PROPERTY LINE
- ▨ MARK RUNWAY 4-22 AND TAXIWAYS
- ◆◆◆ LOCATION OF LIGHTED BARRICADES
- CP-1 CRITICAL POINT NO. 1

CRITICAL POINTS			
ALL POINTS ARE 200' FROM C RUNWAY 13-31			
NO.	LATITUDE	LONGITUDE	ELEVATION
CP-1	39°46'44.06"	90°14'42.62"	614.7
CP-2	39°46'36.48"	90°14'32.86"	615.9
CP-3	39°46'29.51"	90°14'16.64"	619.6
CP-4	39°46'26.71"	90°14'20.27"	619.6
CP-5	39°46'22.29"	90°14'14.57"	621.9
CP-6	39°46'16.35"	90°14'06.91"	622.1
CP-7	39°46'09.30"	90°13'57.83"	618.6



JACKSONVILLE MUNICIPAL AIRPORT
JACKSONVILLE, ILLINOIS

IMPROVEMENT AND SAFETY PLAN

HUTCHISON ENGINEERING, INC.
JACKSONVILLE, ILLINOIS

DRAWN BY: T.J.D. ILL. PROJ. NO. IJX-3867
DATE: JANUARY, 2009 AIP PROJ. NO. 3-17-0054-B14