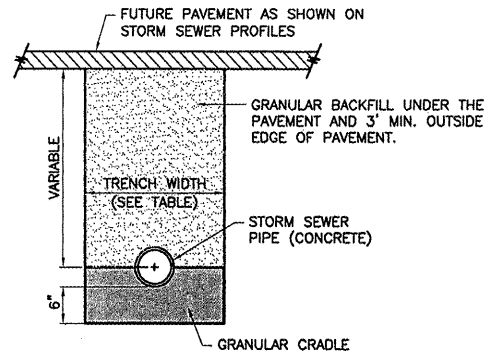
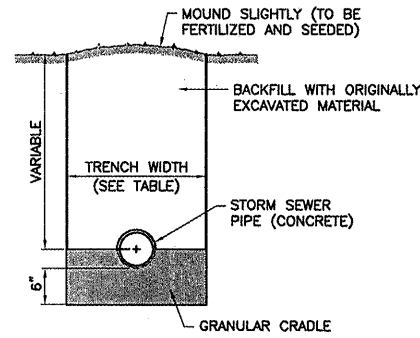


INSIDE DIAMETER OF STORM SEWER (INCHES)	MAXIMUM TRENCH WIDTH
6	3'-2"
8	3'-2"
12	3'-4"
15	3'-6"
18	3'-10"
21	4'-4"
24	4'-8"
27	4'-11"
30	5'-3"
36	6'-4"
42	6'-11"
48	7'-6"
54	8'-7"
60	9'-2"
66	9'-9"
72	10'-4"
78	10'-11"
84	11'-6"
90	12'-1"
96	12'-8"
102	13'-3"
108	13'-10"

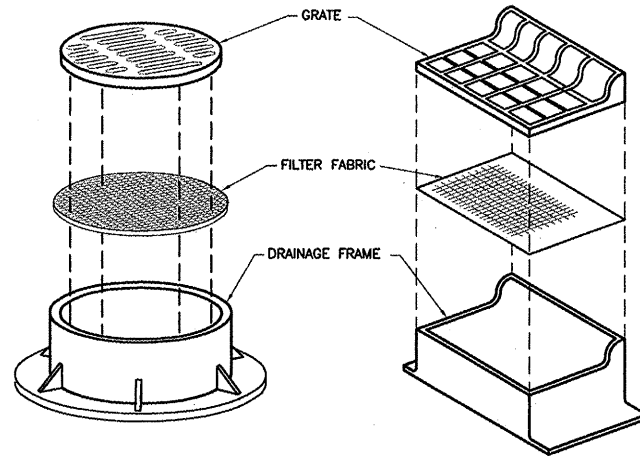


ALL PAVED AREAS



NON-PAVED AREAS

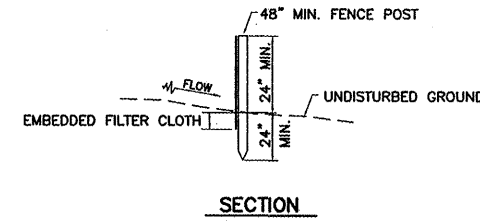
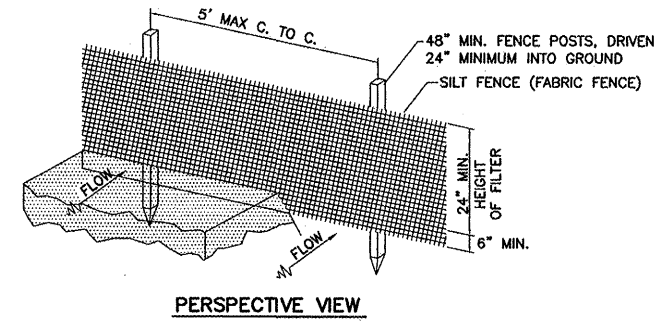
TRENCH DETAILS - STORM SEWER
N.T.S.



NOTES:

1. FILTER WRAP TO BE PLACED IN ALL INLETS, MANHOLES, AND CATCH BASINS LOCATED IN NON-PAVED AREAS AND INLET IN CURB OR PAVEMENTS ADJACENT TO TURF AREA.
2. FABRIC SHALL BE IN CONFORMANCE WITH MATERIALS SPECIFIED FOR FABRIC FENCE.
3. FABRIC SHALL OVERLAY FRAME BY 2" (MIN.).
4. CONTRACTOR SHALL CLEAR DEBRIS AND SILT AS REQUIRED FROM FABRIC TO MAINTAIN DRAINAGE THROUGH THE STRUCTURE.
5. FABRIC SHALL REMAIN IN PLACE UNTIL TURFED AREAS HAVE DEVELOPED A MIN. OF 80% OF COVERAGE.
6. COST OF FILTER WRAP SHALL BE CONSIDERED INCIDENTAL TO THE COST OF THE ASSOCIATED DRAINAGE STRUCTURE.

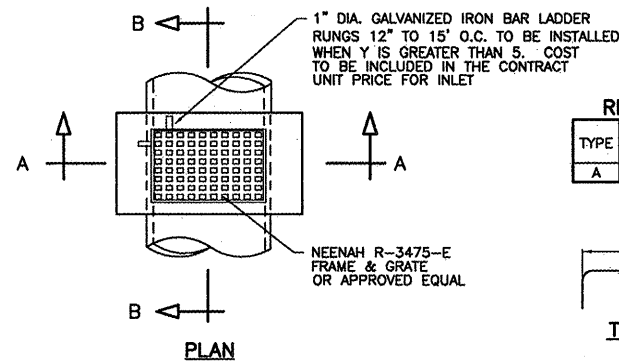
DRAINAGE STRUCTURE FILTER WRAP
N.T.S.



CONSTRUCTION NOTES FOR
SILT (FABRIC) FENCE

1. WHEN TWO SECTIONS OF FILTER CLOTH ADJOIN EACH OTHER THEY SHALL BE OVER-LAPPED BY 6-INCH MIN. AND FOLDED.
2. MAINTENANCE SHALL BE PERFORMED AS NEEDED AND MATERIAL REMOVED WHEN "BULGES" DEVELOP IN THE SILT FENCE. MAINTENANCE, WHICH INCLUDES THE REPLACEMENT OF DAMAGED FENCE, SHALL BE CONSIDERED INCIDENTAL TO THE COST OF THE EROSION CONTROL FENCE.
3. SILT FENCE SHALL BE INSTALLED PER PLAN OR AS DIRECTED BY THE AIRPORT.

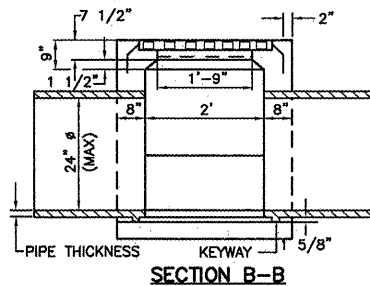
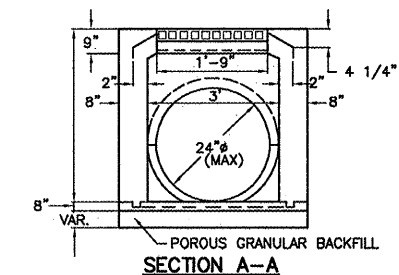
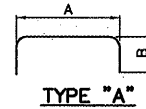
EROSION CONTROL FABRIC FENCE DETAIL
N.T.S.



REINFORCING BAR SCHEDULE

TYPE	PER INLET	DIMENSIONS	SIZE	APPROX. WT. OF BARS IN INLET
A	2	3'4" x 2'4"	#5	16.7

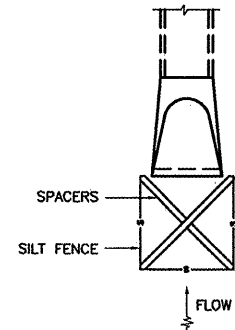
REINFORCING STEEL BARS TYPES



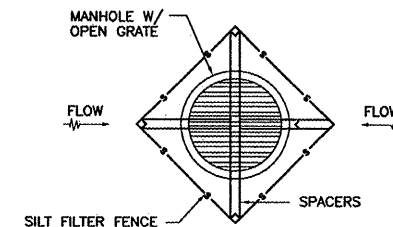
PROPOSED TYPE 1 INLET

NOTES FOR ALL
INLET PROTECTION

1. SILT FENCE AND SPACERS SHALL NOT BE MEASURED SEPARATELY FOR PAYMENT, BUT WILL BE INCLUDED IN THE UNIT PRICE FOR INLET PROTECTION.
2. INSPECTION SHALL BE FREQUENT AND REPAIR / REPLACEMENT SHALL BE MADE PROMPTLY AS NEEDED.
3. AFTER FINAL APPROVAL OF THE ENGINEER, SILT FENCE MAY BE REMOVED. CONTRACTOR SHALL PLACE SEED AND MULCH OVER THE DISTURBED AREAS.
4. SILT FILTER FABRIC SHALL MEET THE REQUIREMENTS OF MATERIAL SPECIFIED FOR ITEM AR156000 EROSION CONTROL IN THE ILLINOIS DEPARTMENT OF TRANSPORTATION DIVISION OF AERONAUTICS SUPPLEMENTAL SPECIFICATIONS AND RECURRING SPECIAL PROVISIONS.



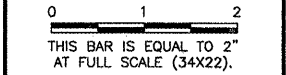
INLET PROTECTION (END SECTION)
NOT TO SCALE
IDOT STANDARD 280001-03



INLET PROTECTION (INLET/MANHOLES)
NOT TO SCALE
IDOT STANDARD 280001-03

REVISIONS

NUMBER	BY	DATE



GREATER KANKAKEE AIRPORT
KANKAKEE, ILLINOIS
REHABILITATE TERMINAL APRON AND TAXIWAY H - PHASE 1

MISCELLANEOUS DETAILS-SHEET 2

© Copyright CMT, Inc.

CMT
CRAWFORD, MARRIY & TLLY, INC.
CONSULTING ENGINEERS
License No. 184-000613

DESIGN BY:	MND
DRAWN BY:	JRO
CHECKED BY:	MND
APPROVED BY:	
DATE:	01/16/09
JOB No:	08075-05
IL PROJECT:	IKK-3864
A.I.P. PROJECT:	3-17-0057-B16
FINAL SUBMITTAL	
SHEET 15 OF 17 SHEETS	