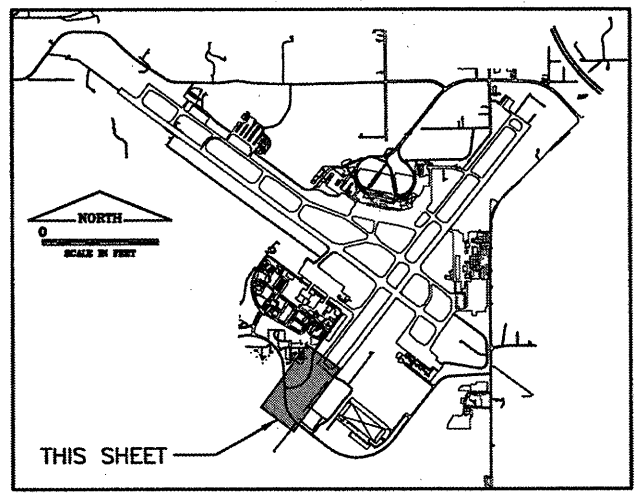
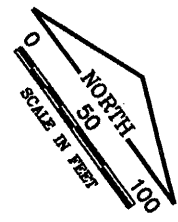


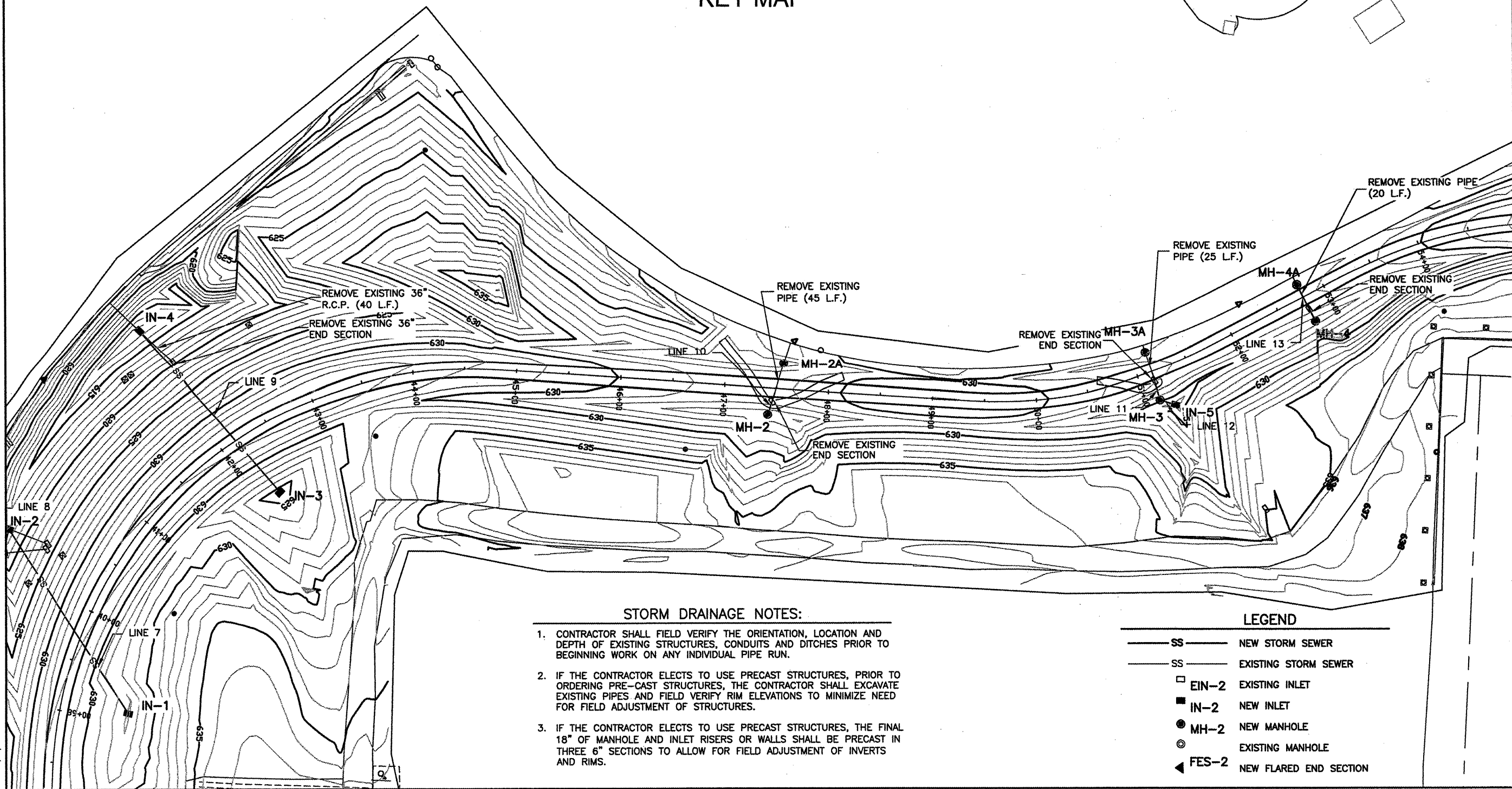
PE089

REVISIONS		
NUMBER	BY	DATE

0 1 2
THIS BAR IS EQUAL TO 2'
AT FULL SCALE (34X22).
PLOT 1



KEY MAP



CONSTRUCT NEW PERIMETER ROAD AND PERIMETER FENCE - PROJECT 3

GENERAL WAYNE A. DOWNING
PEORIA INTERNATIONAL AIRPORT

CMT
CRAWFORD, MURPHY & TILLY, INC.
CONSULTING ENGINEERS
License No. 84-00613

IL PROJECT: PIA-3865
AIP PROJ: 3-17-0080-XX

FILE:	SOUTH_DRAINAGE_PLAN_04
DESIGN BY:	TJH/SMS
DRAWN BY:	CMT
CHECKED BY:	CET
APPROVED BY:	CET
DATE:	02-13-2009
JOB No:	07061-04-00

SOUTH DRAINAGE PLAN
SHEET 4 OF 6

SHEET 34 OF 151 SHEETS

STORM DRAINAGE NOTES:

1. CONTRACTOR SHALL FIELD VERIFY THE ORIENTATION, LOCATION AND DEPTH OF EXISTING STRUCTURES, CONDUITS AND DITCHES PRIOR TO BEGINNING WORK ON ANY INDIVIDUAL PIPE RUN.
2. IF THE CONTRACTOR ELECTS TO USE PRECAST STRUCTURES, PRIOR TO ORDERING PRE-CAST STRUCTURES, THE CONTRACTOR SHALL EXCAVATE EXISTING PIPES AND FIELD VERIFY RIM ELEVATIONS TO MINIMIZE NEED FOR FIELD ADJUSTMENT OF STRUCTURES.
3. IF THE CONTRACTOR ELECTS TO USE PRECAST STRUCTURES, THE FINAL 18" OF MANHOLE AND INLET RISERS OR WALLS SHALL BE PRECAST IN THREE 6" SECTIONS TO ALLOW FOR FIELD ADJUSTMENT OF INVERTS AND RIMS.

LEGEND

- SS — NEW STORM SEWER
- SS — EXISTING STORM SEWER
- EIN-2 EXISTING INLET
- IN-2 NEW INLET
- MH-2 NEW MANHOLE
- ⊙ EXISTING MANHOLE
- ◀ FES-2 NEW FLARED END SECTION

K:\Peoria\07061\Draw\Sheets\1 - West_South_Fence\Phase 3 Sheets
FILE: SOUTH_DRAINAGE_PLAN_04.dwg
DATE: 2/12/2009 8:44 AM