

NUMBER	BY	DATE

0 1 2  
THIS BAR IS EQUAL TO 2" AT FULL SCALE (34X22). PLOT 1

GENERAL NOTES

Joint configuration and dimensions of flat slab top shall match and fit the riser joint detail.

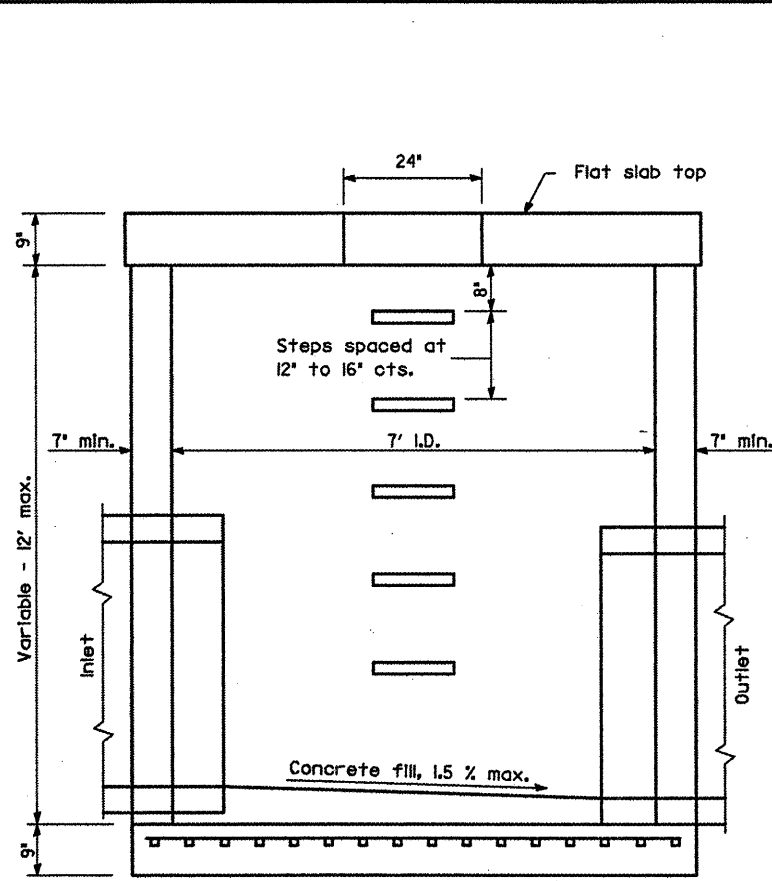
Lifting devices shall be approved by the Engineer.

Bottom slabs shall be reinforced with a minimum of 1270 sq. mm/m (0.60 sq. in./ft.) in both directions.

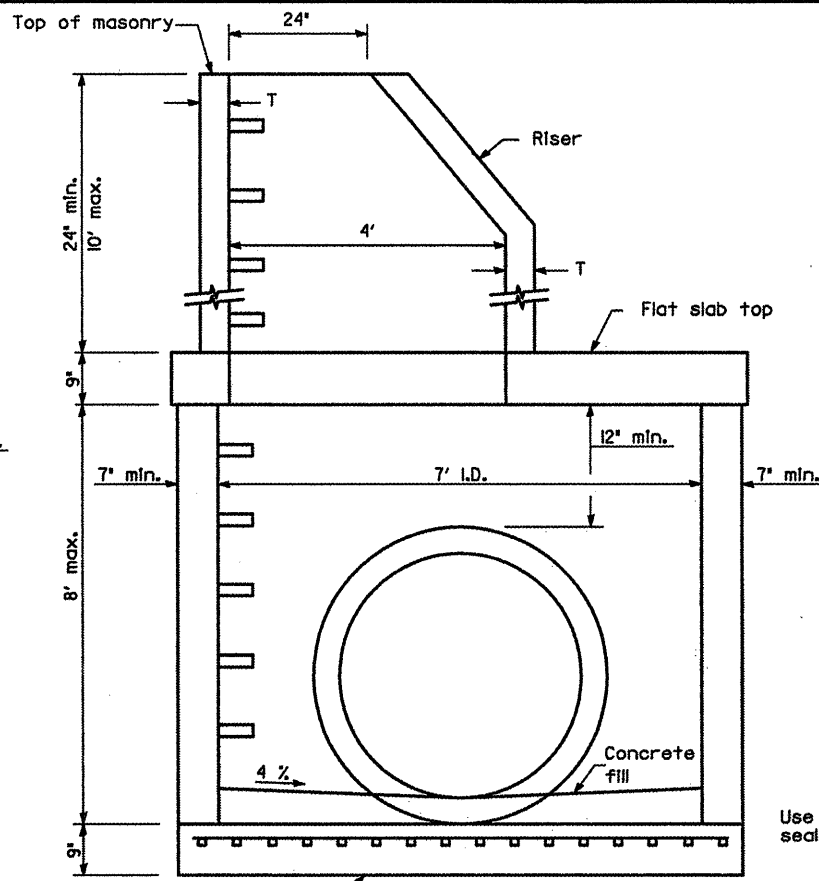
See Standard 602701 for details of manhole steps.

All dimensions are in inches unless otherwise shown.

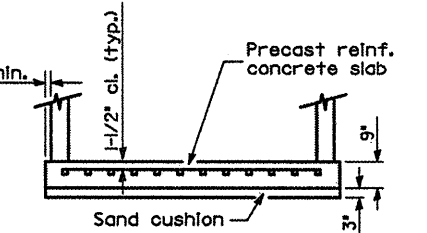
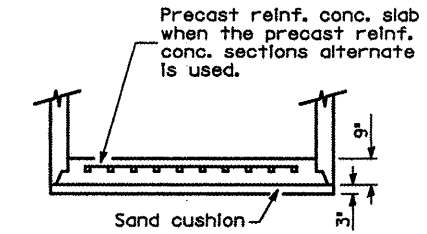
ALTERNATE MATERIALS FOR RISER WALLS	MIN.
Concrete Masonry Units	5'
Precast Reinforced Concrete Sections	4'
Cast-in-Place Concrete	6'



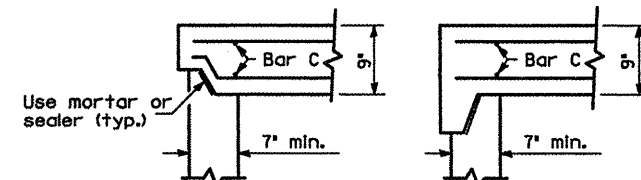
ELEVATION  
(With Flat Slab Top Only)



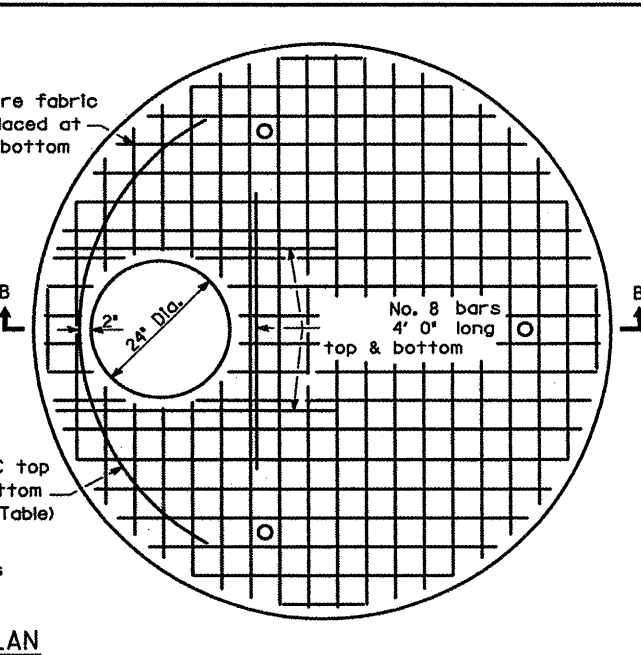
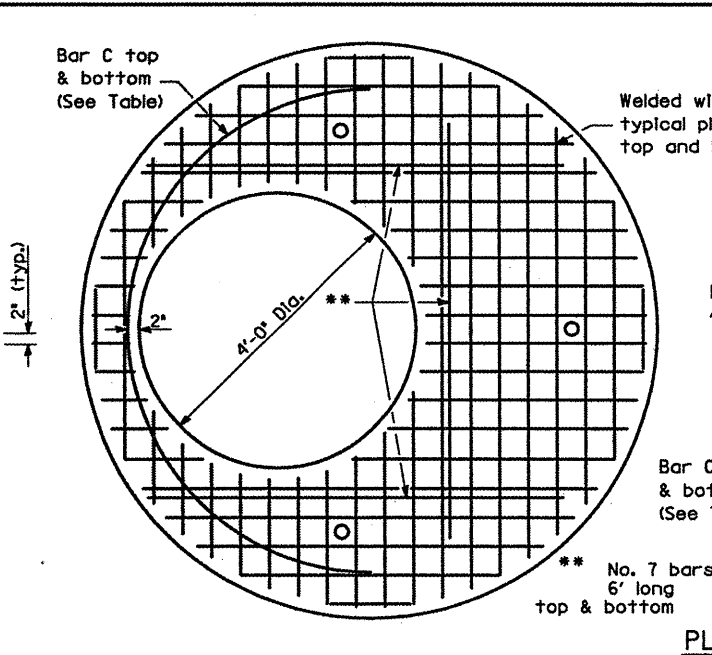
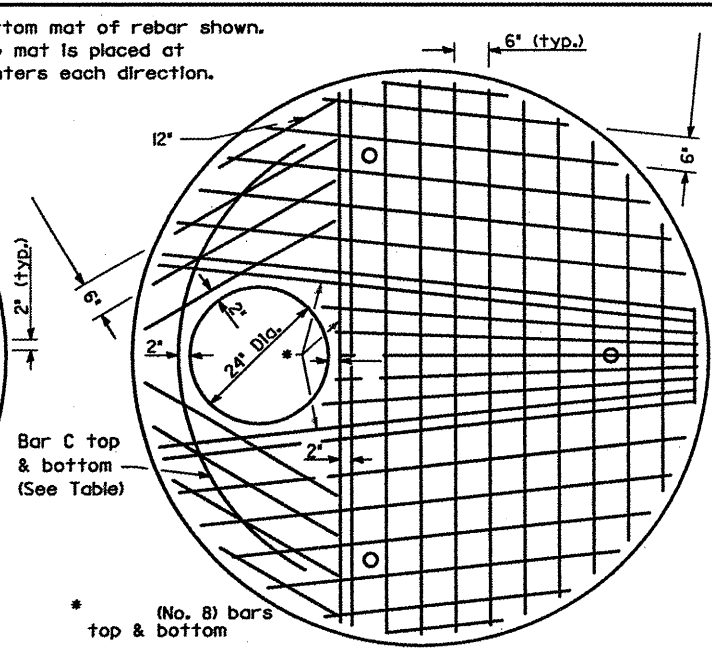
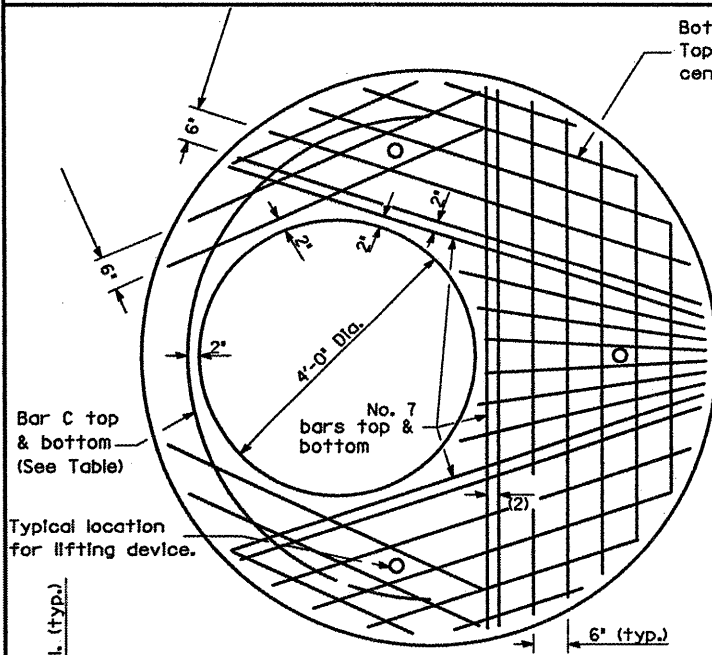
ELEVATION  
(With Flat Slab Top and Riser)



ALTERNATE BOTTOM SLABS



ALTERNATE JOINT CONFIGURATIONS

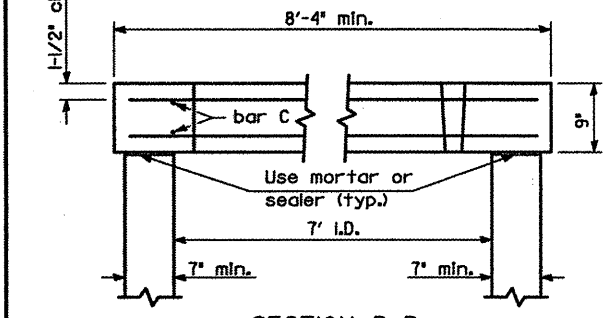


PLAN  
Showing Rebar Reinforcement

PLAN  
Showing Welded Wire Fabric Reinforcement

Diameter of opening	Reinforcement Bar Size	Reinforcement 'As' WWF each direction	No. 4 Bar C	
			Length	Radius
24"	Bottom mat No. 8	Bottom mat 1.57 sq. in./ft.	7'-6"	3'-6"
	Top mat No. 4	Top mat 0.20 sq. in./ft.		
4'-0"	Bottom mat No. 7	Bottom mat 1.20 sq. in./ft.	11'-0"	3'-6"
	Top mat No. 4	Top mat 0.20 sq. in./ft.		

A maximum of two layers of welded wire fabric may be used to satisfy the required 'As' for each mat.



SECTION B-B  
(Typical of each top)

GENERAL WAYNE A. DOWNING  
PEORIA INTERNATIONAL AIRPORT

CONSTRUCT NEW PERIMETER ROAD AND PERIMETER FENCE - PROJECT 3

CMT  
CRAWFORD, MURPHY & TILLY, INC.  
CONSULTING ENGINEERS  
License No. 481-00015

IL PROJECT: PIA-3865  
AIP PROJ. 3-17-0080-XX

FILE:	MHDLS1A
DESIGN BY:	TJH/SMS
DRAWN BY:	CMT
CHECKED BY:	CET
APPROVED BY:	CET
DATE:	02-13-2009
JOB No:	07061-04-00

MANHOLE DETAILS  
SHEET 1 OF 3

MANHOLE TYPE A  
7' DIAMETER