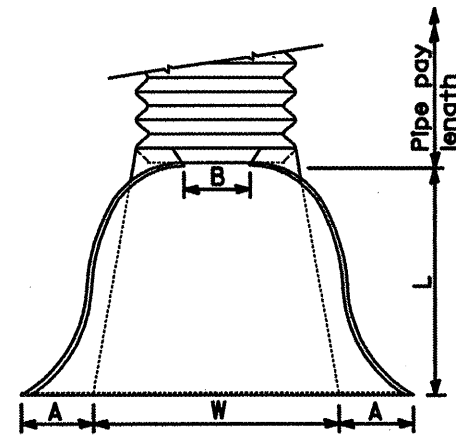


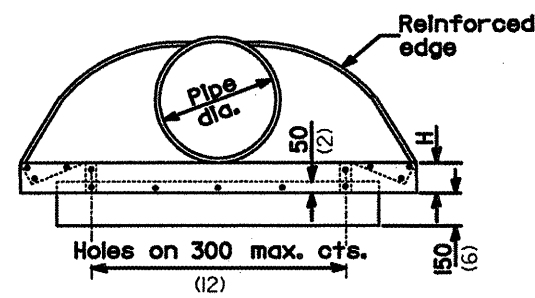
NUMBER	BY	DATE

0 1 2  
THIS BAR IS EQUAL TO 2"  
AT FULL SCALE (34X22).  
PLOT 1

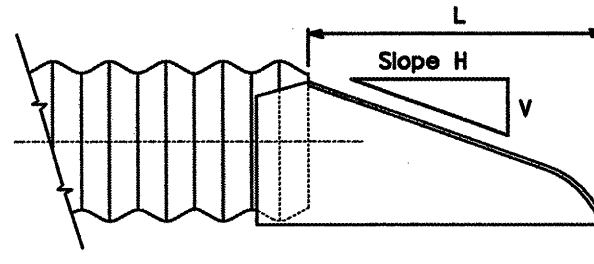
PIPE DIA.	THICKNESS	DIMENSIONS					SLOPE (Approx.) (V:H)	BODY
		A	B	H	L	W		
300 (12)	1.63 (0.064)	150 (6)	150 (6)	150 (6)	535 (21)	610 (24)	1:2-1/2	1 Pc.
375 (15)	1.63 (0.064)	180 (7)	205 (8)	150 (6)	660 (26)	760 (30)	1:2-1/2	1 Pc.
450 (18)	1.63 (0.064)	205 (8)	255 (10)	150 (6)	785 (31)	915 (36)	1:2-1/2	1 Pc.
525 (21)	1.63 (0.064)	230 (9)	305 (12)	150 (6)	915 (36)	1,065 m (42')	1:2-1/2	1 Pc.
600 (24)	1.63 (0.064)	255 (10)	330 (13)	150 (6)	1,040 m (41')	1,220 m (48')	1:2-1/2	1 Pc.
750 (30)	2.01 (0.079)	305 (12)	405 (16)	205 (8)	1,295 m (51')	1,525 m (60')	1:2-1/2	1 Pc.
900 (36)	2.01 (0.079)	355 (14)	480 (19)	230 (9)	1,525 m (60')	1,830 m (72')	1:2-1/2	2 Pc.
1050 (42)	2.77 (0.109)	405 (16)	560 (22)	280 (11)	1,750 m (69')	2,135 m (84')	1:2-1/2	2 Pc.
1200 (48)	2.77 (0.109)	455 (18)	685 (27)	305 (12)	1,980 m (78')	2,285 m (90')	1:2-1/4	2 Pc.
1350 (54)	2.77 (0.109)	455 (18)	760 (30)	305 (12)	2,135 m (84')	2,590 m (102')	1:2	2 Pc.
1500 (60)	2.77 (0.109)	455 (18)	840 (33)	305 (12)	2,210 m (87')	2,895 m (114')	1:1-3/4	3 Pc.
1650 (66)	2.77 (0.109)	455 (18)	915 (36)	305 (12)	2,210 m (87')	3,050 m (120')	1:1-1/2	3 Pc.
1800 (72)	2.77 (0.109)	455 (18)	990 (39)	305 (12)	2,210 m (87')	3,200 m (126')	1:1-1/3	3 Pc.
1950 (78)	2.77 (0.109)	455 (18)	1,065 m (42')	305 (12)	2,210 m (87')	3,355 m (132')	1:1-1/4	3 Pc.
2250 (84)	2.77 (0.109)	455 (18)	1,145 m (45')	305 (12)	2,210 m (87')	3,505 m (138')	1:1-1/8	3 Pc.



PLAN



END VIEW



SIDE VIEW

END SECTION

NOTES

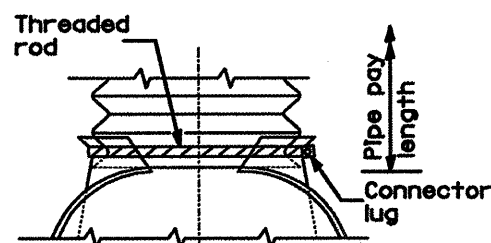
For 1500 mm (60") thru 2250 mm (84") sizes, reinforced edges shall be supplemented with stiffener angles. The angles shall be 51x51x6.4 mm (2x2x1/4") for 1500 mm (60") thru 1800 mm (72") diameter and 64x64x6.4 mm (2-1/2x2-1/2x1/4") for 1950 mm (78") thru 2250 mm (84") diameter. The angles shall be attached by M10 (3/8") rivets or bolts.

All slope ratios are expressed as units of vertical displacement to units of horizontal displacement (V:H).

NOTES

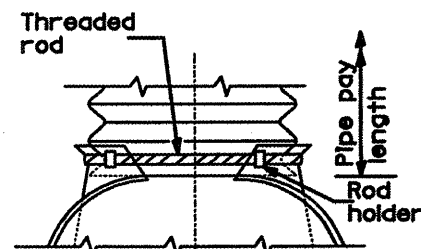
- Types 1 and 2 for pipes with annular ends only.
- Type 3 connection can be used for all pipe sizes and includes 300 mm (12") of the pipe length. The connector section shall be attached to the end section by rivets or bolts and shall be the same metal thickness as the end section. Stub shall be either 68 mm (2 2/3") pitch x 13 mm (1/2") depth or 75 mm (3") pitch x 25 mm (1") depth annular corrugated pipe.
- Type 4 connection can be used for all pipe sizes. Coupler shall be 68 mm x 13 mm (2 2/3"x1/2") dimple, hugger, or annular band of 75 mm x 25 mm (3"x1"). The dimple, hugger, or annular band may be used with corrugated metal pipes having annular ends. For corrugated metal pipes having helical ends, only the dimple band will be allowed.

All dimensions are in millimeters (inches) unless otherwise shown.



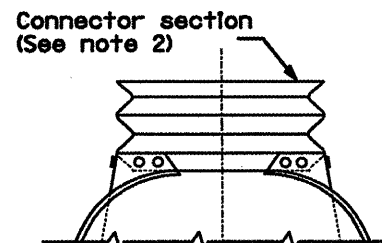
TYPE 1

For 300 (12) thru 600 (24) only (See Note 1)



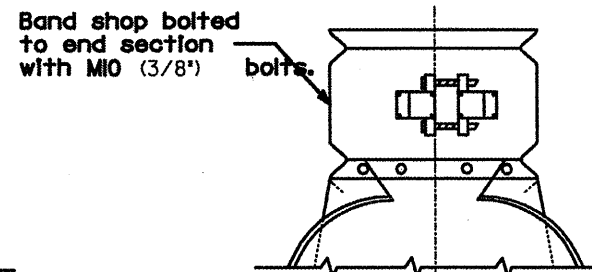
TYPE 2

For 750 (30) and 900 (36) only (See Note 1)



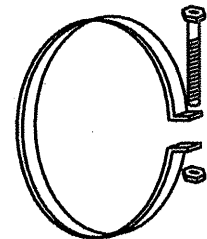
TYPE 3

(See Note 2)



TYPE 4

(See Note 3)



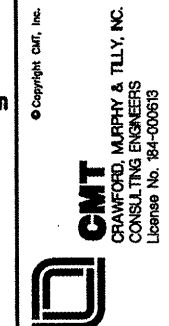
ALTERNATE STRAP CONNECTOR

(For Type 1 only)

29 (1) Wide, 2.77 (0.109) thick strap with standard M12x150 (1/2x6) band bolt and nut.

CONNECTIONS OF END SECTIONS

GENERAL WAYNE A. DOWNING  
PEORIA INTERNATIONAL AIRPORT  
CONSTRUCT NEW PERIMETER ROAD AND PERIMETER FENCE - PROJECT 3



PROJECT: PIA-3865  
AIP PROJ: 3-17-0080-XX

FILE:	MEDALENDESECFORPIPECULV
DESIGN BY:	TJH/SMS
DRAWN BY:	CMT
CHECKED BY:	CET
APPROVED BY:	CET
DATE:	02-13-2009
JOB No:	07061-04-00

DRAINAGE DETAILS  
SHEET 2 OF 3