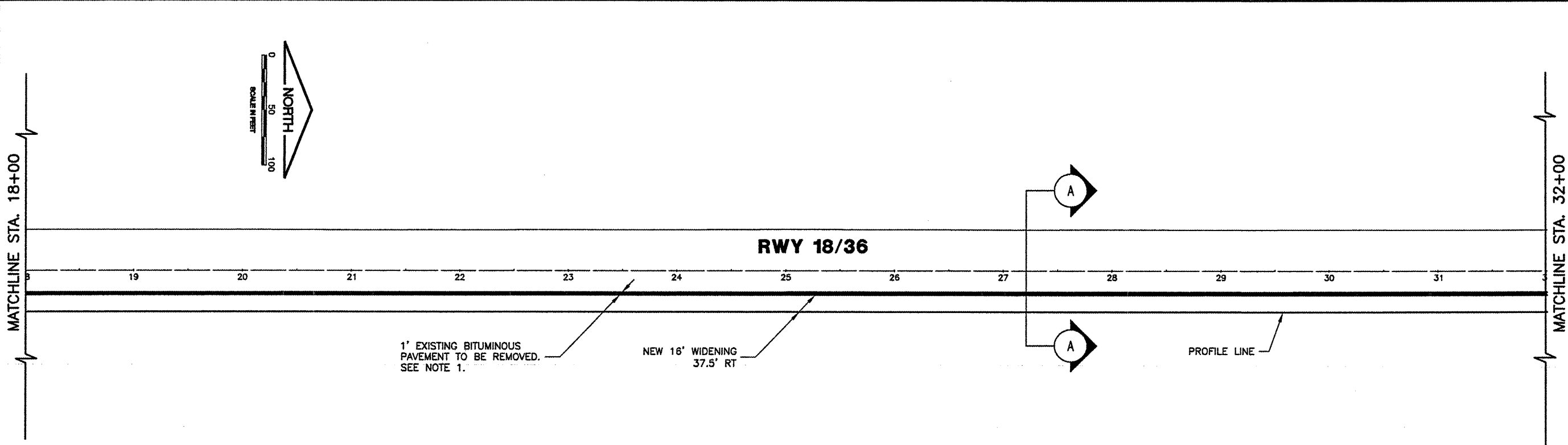
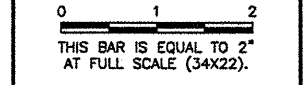


K:\Sparta\AP\0641203\Widen Runway\Draw\EGPT\Plot  
 FILE: RCp02001.dwg  
 UPDATE BY: Dave Allen  
 PLOT DATE: 1/9/2009 9:27 AM  
 rcp001  
 BASE\_EXISTOPO  
 BASE\_PROPELEC  
 BASE\_PROPGEO  
 BASE\_PROPSITE

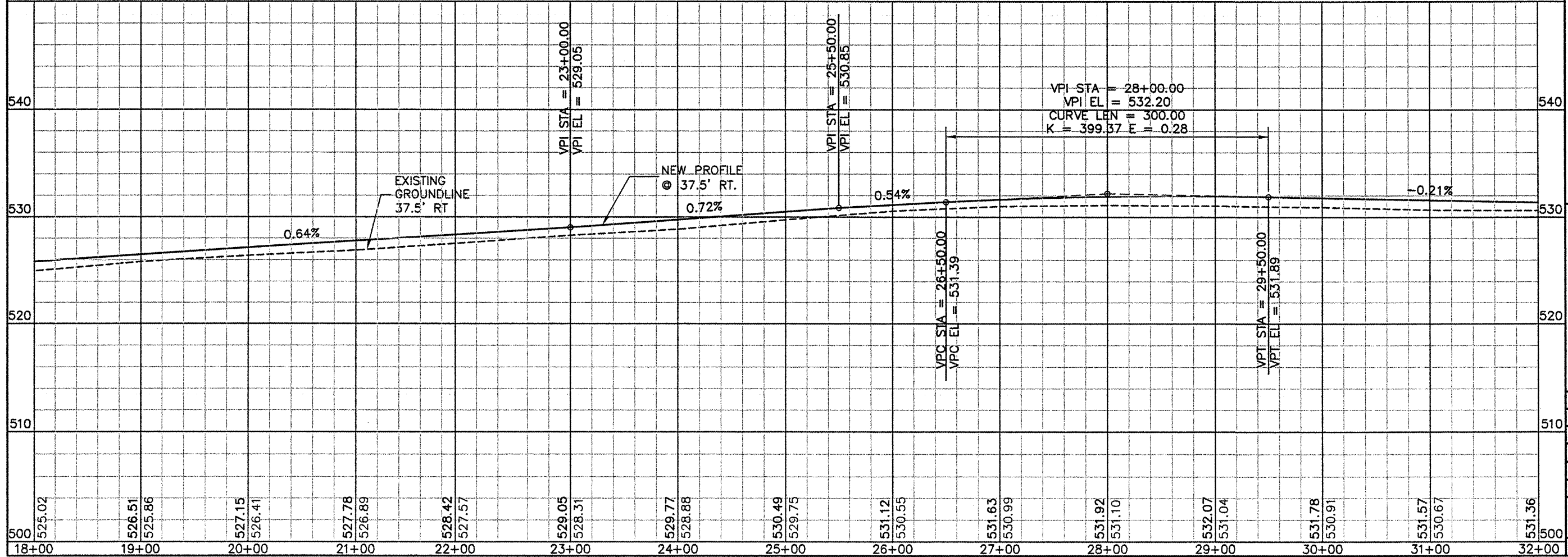
REVISIONS		
NUMBER	BY	DATE



**NOTES**

1. BITUMINOUS PAVEMENT REMOVAL SHALL CONSIST OF SAWCUTTING AND REMOVAL OF AN AREA 1' IN WIDTH BY THE LENGTH OF THE RUNWAY ALONG THE EAST SIDE OF THE RUNWAY PAVEMENT. SAWCUT SHALL BE THE FULL DEPTH OF THE EXISTING BITUMINOUS PAVEMENT AND LEAVE A SMOOTH VERTICAL SURFACE.

SCALES:  
 1" = 50' HOR  
 1" = 5' VER



SPARTA COMMUNITY AIRPORT  
 HUNTER FIELD  
 SPARTA, ILLINOIS

WIDEN AND OVERLAY RUNWAY 18/36  
 WIDENING EDGE  
 PLAN & PROFILE 2  
 STA. 18+00 TO STA. 32+00

© Copyright CMT, Inc.

**CMT**  
 CRAWFORD, MURPHY & TILLY, INC.  
 CONSULTING ENGINEERS  
 License No. 184-000613

DESIGN BY:	KLB
DRAWN BY:	CMT
CHECKED BY:	JEF
APPROVED BY:	JEF
DATE:	12/31/2008
JOB No:	0641203
IL PROJ. NO.	SAR-3652
AIP PROJ. NO.	3-17-0094-B9
SHEET 06 OF 28 SHEETS	