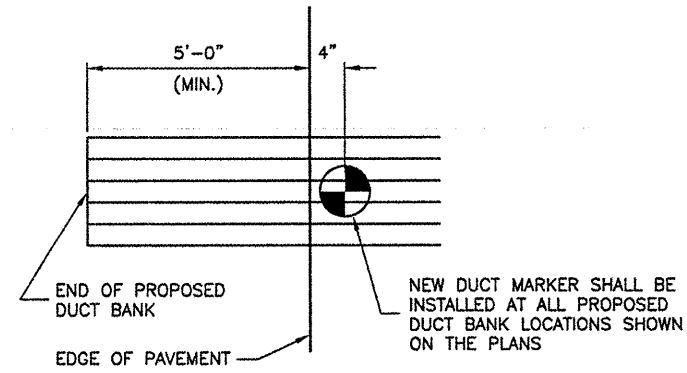


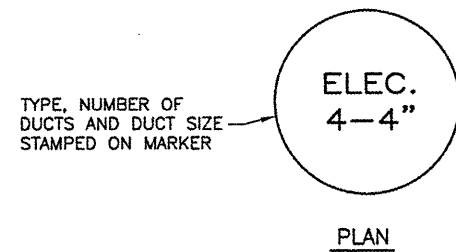
K:\Denville\0504203 Taxiway Extension\Draw\Sheets
 FILE: 16_ELECDEL2.dwg
 LAYOUT: ELECDEL2
 UPDATE BY: dallen
 SURVEY BOOK #
 DATE: Mon 1/5/09 5:43pm
 XREF DWG: Cintinfo.dwg



END OF PROPOSED DUCT BANK
 NEW DUCT MARKER SHALL BE INSTALLED AT ALL PROPOSED DUCT BANK LOCATIONS SHOWN ON THE PLANS
 EDGE OF PAVEMENT

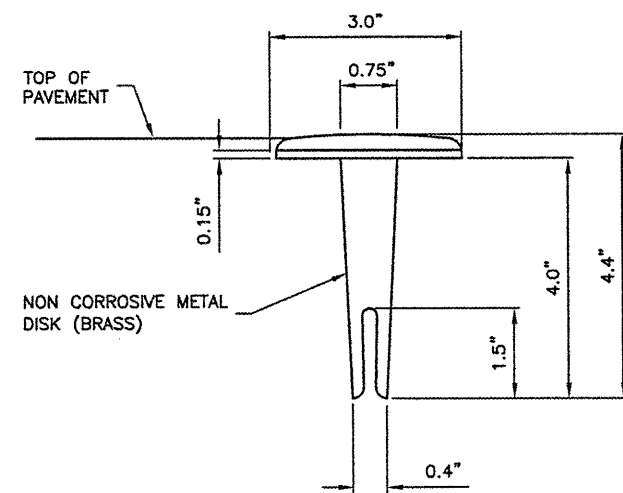
DUCT MARKERS SHALL BE RECESSED AND GROUTED INTO THE PAVEMENTS.

MARKER PLACEMENT



TYPE, NUMBER OF DUCTS AND DUCT SIZE STAMPED ON MARKER

PLAN

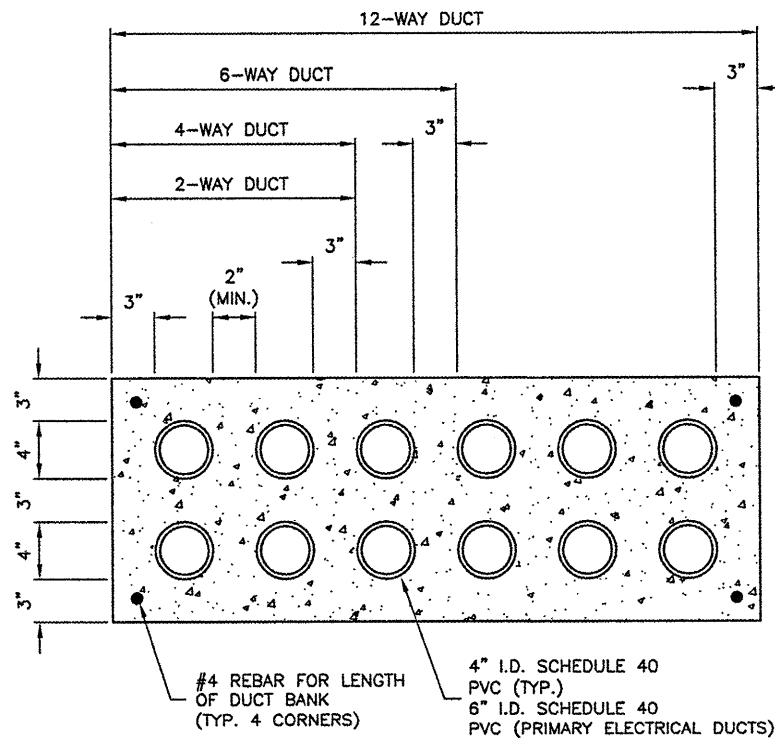
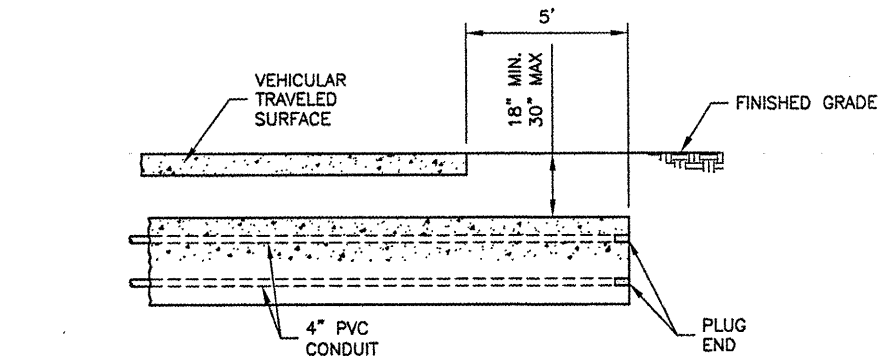


NON CORROSIVE METAL DISK (BRASS)

SECTION

DUCT MARKER DETAILS

N.T.S.



DUCT BANK DETAILS

N.T.S.

DUCT BANK NOTES

1. DIMENSIONS SHOWN ARE MINIMUM.
2. TOP OF CONCRETE ENCASEMENT TO BE NOT LESS THAN 18" BELOW FINISHED SUBGRADE.
3. DUCT CONCRETE TO BE ITEM 610 STRUCTURAL P.C.C. CONCRETE.
4. ALL DUCT WILL BE 4" INSIDE DIAMETER.
5. LOCATIONS SHOWN ARE APPROXIMATE. DUCT BANKS TO BE INSTALLED AT LOCATIONS DESIGNATED BY THE ENGINEER.
6. CONTRACTOR WILL INSTALL DUCT BANKS AT A DEPTH WHICH WILL NOT CONFLICT WITH ELEVATION SENSITIVE UTILITIES.
7. A PULL WIRE MUST BE PROVIDED IN EACH UNUSED CONDUIT. UNUSED DUCT MUST BE SEALED WITH PVC PLUGS/CAPS TO THE SATISFACTION OF THE ENGINEER.
8. DUCT BANKS MUST EXTEND A MINIMUM OF 5' BEYOND THE PROPOSED EDGE OF PAVEMENT.

REVISIONS

NUMBER	BY	DATE

0 1 2
 THIS BAR IS EQUAL TO 2" AT FULL SCALE (34X22).

VERMILLION COUNTY AIRPORT
 DANVILLE, ILLINOIS
 EXTEND PARALLEL TAXIWAY 600 FEET
 ELECTRICAL DETAILS SHEET 2

© Copyright CMT, Inc.
CMT
 CRAWFORD, MURPHY & TILLY, INC.
 CONSULTING ENGINEERS
 License No. 184-000613



DESIGN BY: SMS
 DRAWN BY: DPA
 CHECKED BY: JEF
 APPROVED BY: JEF
 DATE: 01/09/2009
 JOB No: 05042-0300
 ILLINOIS PROJECT DNV-3537
 A.I.P. PROJECT 3-17-0032-B10
 SHEET 16 OF 26 SHEETS