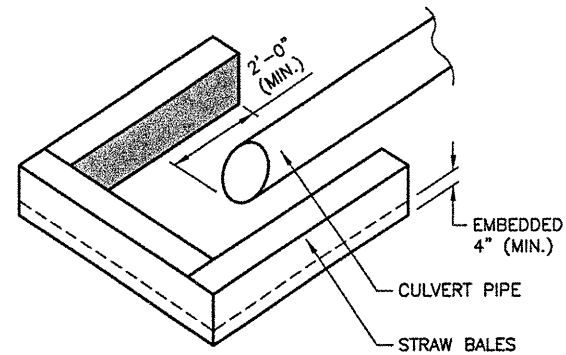
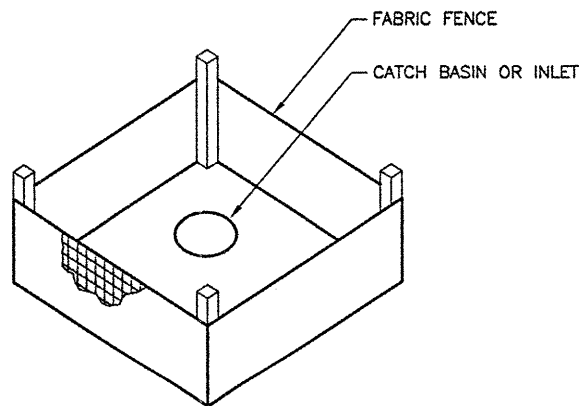


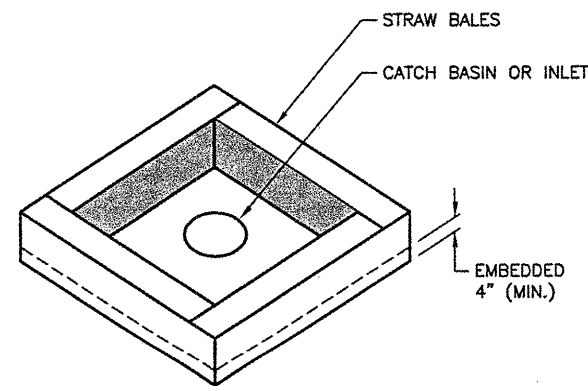
CULVERT PROTECTION WITH FABRIC
 N.T.S.



CULVERT PROTECTION WITH STRAW BALES
 N.T.S.



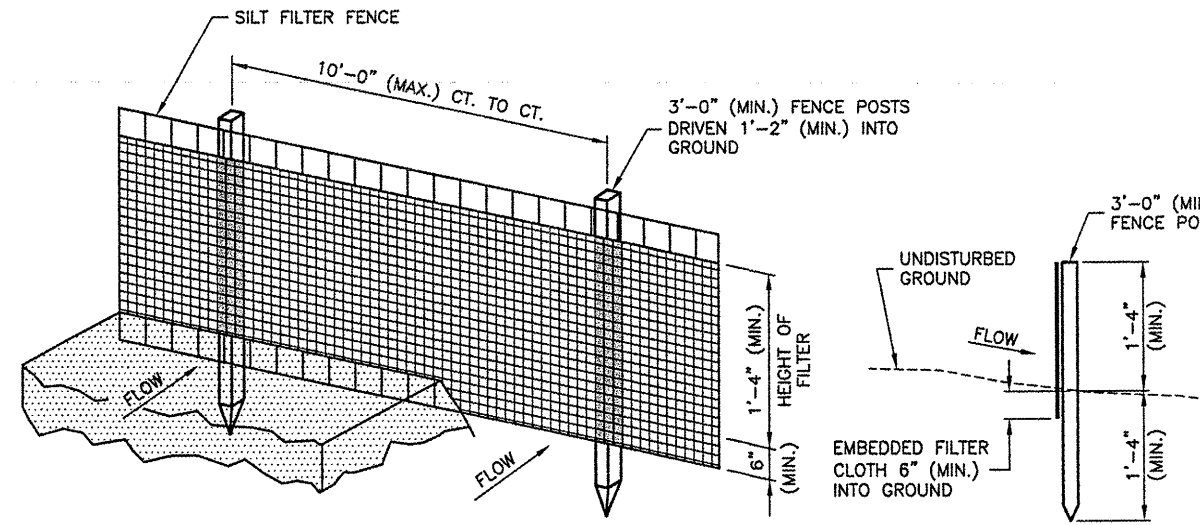
INLET PROTECTION WITH FABRIC
 N.T.S.



INLET PROTECTION WITH STRAW BALES
 N.T.S.

INLET PROTECTION NOTES

1. IF SILT FENCE IS USED FOR INLET PROTECTION, THE FENCE CONSTRUCTION MUST CONFORM TO THE EROSION CONTROL FABRIC FENCE DETAIL ON THIS SHEET.
2. INLET PROTECTION USED AROUND FLARED END SECTIONS OR CULVERTS WILL ONLY REQUIRE 3 SIDES AND WILL BE PAID FOR AS INLET PROTECTION.



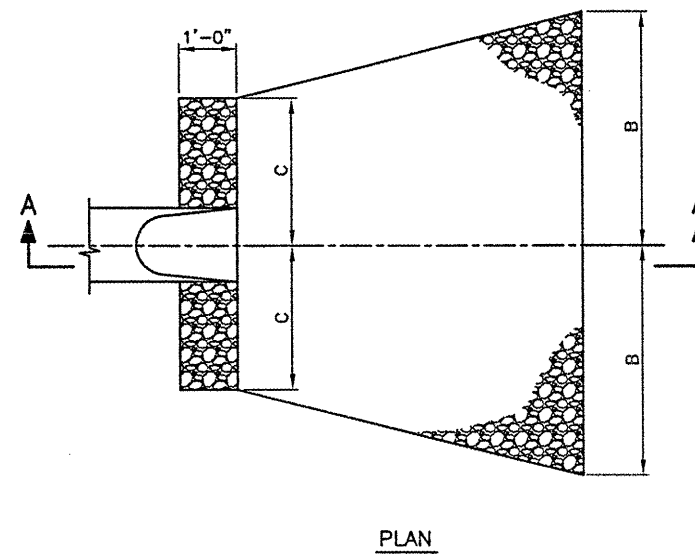
PERSPECTIVE VIEW

SECTION

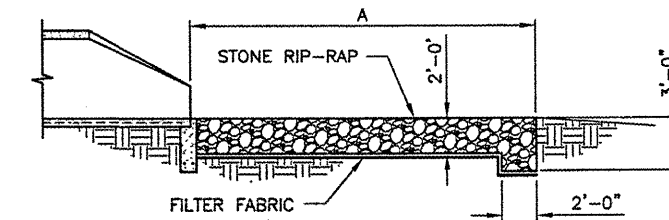
EROSION CONTROL FABRIC FENCE DETAIL
 N.T.S.

EROSION CONTROL FABRIC FENCE NOTES

1. WOVEN WIRE FENCE TO BE FASTENED SECURELY TO FENCE POSTS WITH WIRE TIES OR STAPLES.
2. FILTER CLOTH TO BE FASTENED SECURELY TO WOVEN WIRE FENCE WITH TIES SPACED EVERY 2'-0" AT TOP AND MID SECTION.
3. WHEN TWO SECTIONS OF FILTER CLOTH ADJOIN EACH OTHER THEY MUST BE OVERLAPPED BY 6" MINIMUM AND FOLDED.
4. MAINTENANCE MUST BE PERFORMED AS NEEDED AND MATERIAL REMOVED WHEN "BULGES" DEVELOP IN THE SILT FENCE. MAINTENANCE, WHICH INCLUDES THE REPLACEMENT OF DAMAGED FENCE WILL BE CONSIDERED INCIDENTAL TO THE COST OF THE EROSION CONTROL FENCE.



PLAN



SECTION A-A

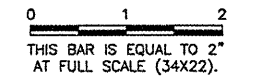
DIMENSIONS -- TABLE 1

INSIDE DIAMETER STORM SEWER (IN.)	INLET DIMENSION (FT.)		
	A	B	C
72"	26	16	7

THE ENGINEER WILL DETERMINE THE FINAL RIP-RAP CONFIGURATION IN THE FIELD.

RIP-RAP DETAILS
 N.T.S.

REVISIONS		
NUMBER	BY	DATE



**VERMILLION COUNTY AIRPORT
 DANVILLE, ILLINOIS**
EXTEND PARALLEL TAXIWAY 600 FEET
EROSION CONTROL DETAILS

© Copyright CMT, Inc.
CMT
 CRAWFORD, MURPHY & TILLY, INC.
 CONSULTING ENGINEERS
 License No. 184-000618

DESIGN BY:	JEF
DRAWN BY:	DPA
CHECKED BY:	JEF
APPROVED BY:	JEF
DATE:	01/09/2009
JOB No:	05042-0300
ILLINOIS PROJECT DNV-3537	
A.I.P. PROJECT 3-17-0032-B10	
SHEET	21 OF 26 SHEETS