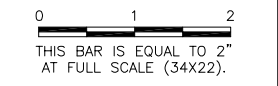


LEGEND

- EXISTING STAKE MOUNTED RUNWAY LIGHT
- EXISTING STAKE MOUNTED TAXIWAY LIGHT
- NEW STAKE MOUNTED TAXIWAY LIGHT
- EXISTING BASE MOUNTED RUNWAY LIGHT
- EXISTING BASE MOUNTED TAXIWAY LIGHT
- NEW BASE MOUNTED TAXIWAY LIGHT
- EXISTING AIRFIELD SIGNAGE
- NEW AIRFIELD SIGNAGE
- RELOCATED AIRFIELD SIGN
- EXISTING SPLICE CAN
- EXISTING DUCT BANK
- NEW 4 WAY P.C.C. DUCT BANK
- EXISTING CABLE
- NEW 1/C #8 5KV CABLE IN UNIT DUCT

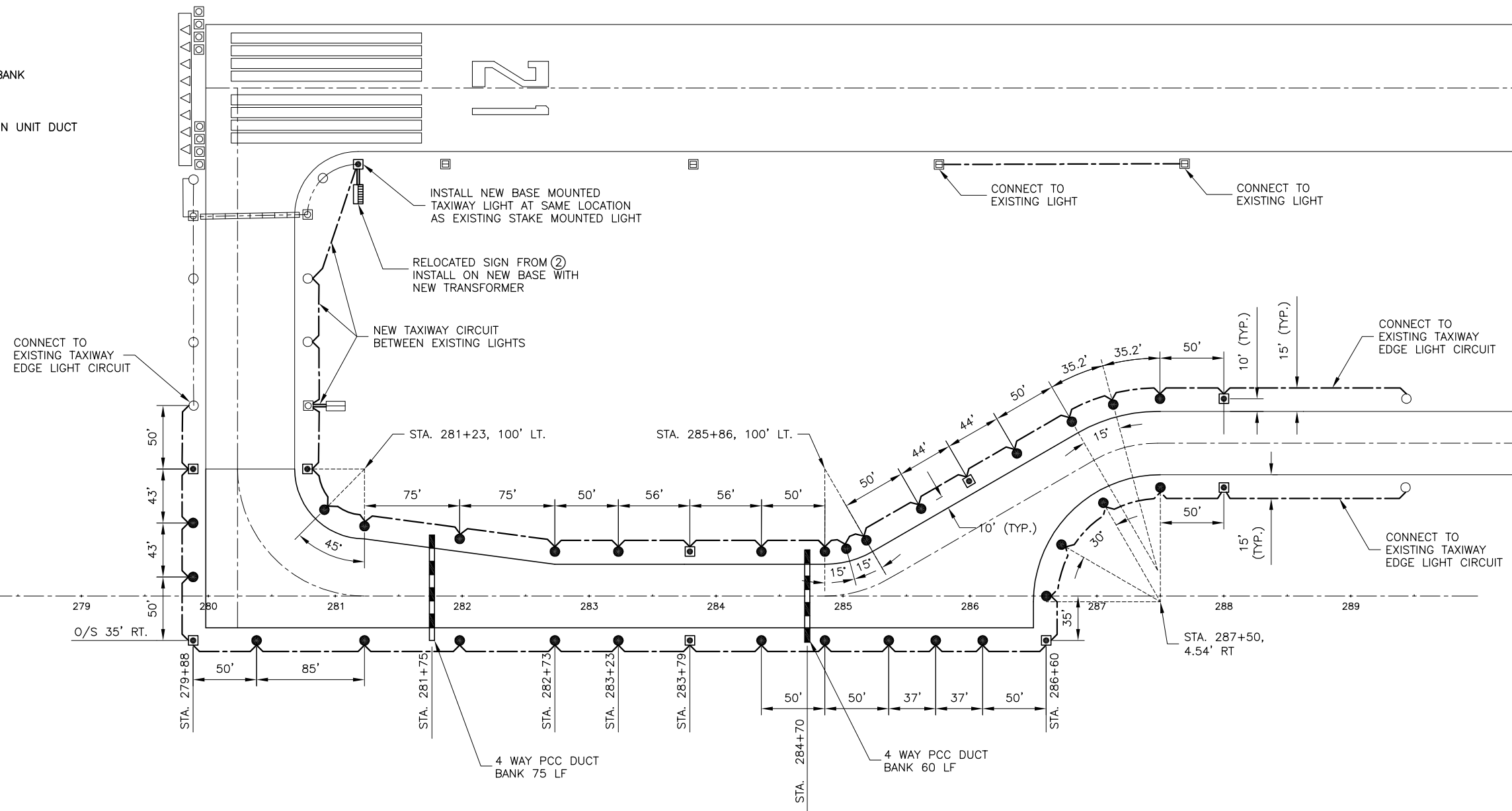
REVISIONS		
NUMBER	BY	DATE
1	JEF	2-17-09



**VERMILLION COUNTY AIRPORT
 DANVILLE, ILLINOIS**

EXTEND PARALLEL TAXIWAY 600 FEET

ELECTRICAL & LIGHTING PLAN



© Copyright GMT, Inc.

GMT
 CRAWFORD, MURPHY & TILLY, INC.
 CONSULTING ENGINEERS
 License No. 184-000613

DESIGN BY:	JEF
DRAWN BY:	DPA
CHECKED BY:	JEF
APPROVED BY:	JEF
DATE:	01/09/2009
JOB No:	05042-0300
ILLINOIS PROJECT DNV-3537	
A.I.P. PROJECT 3-17-0032-B10	
SHEET 13A OF 26 SHEETS	