

STATE OF ILLINOIS
DEPARTMENT OF TRANSPORTATION
DIVISION OF HIGHWAYS

F.A. RITE.	SECTION	COUNTY	TOTAL SHEETS	SHEET NO.
VAR	2014-0761	VARIOUS	14	1
		ILLINOIS	CONTRACT NO. 62A20	

FOR INDEX OF SHEETS, SEE SHEET NO. 2

PROPOSED HIGHWAY PLANS

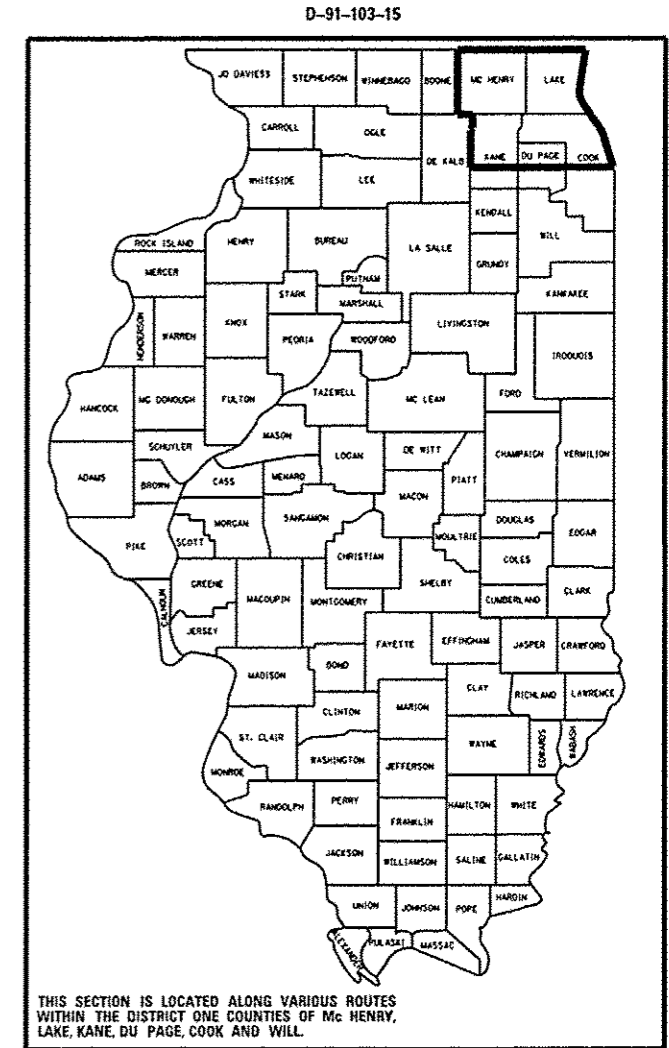
ROUTE: VARIOUS EXPRESSWAYS AND ARTERIAL
HIGHWAYS – NORTHERN PART, DISTRICT ONE

SECTION: 2014-0761

FENCE REPAIR

COUNTY: VARIOUS

C-91-103-15



**SEE LOCATION MAPS
SHEETS 4 THRU 8**

C.U.A.N.
CHICAGO UTILITY ALERT NETWORK
1-312-744-7000

J.U.L.I.E.
JOINT UTILITY LOCATION INFORMATION FOR EXCAVATION
1-800-892-0123
OR 811

PROJECT ENGINEER: J. ALAIN MIDY (847) 221-3056
PROJECT MANAGER: ISSAM RAYYAN (847) 705-4178

CONTRACT NO. 62A20

STATE OF ILLINOIS
DEPARTMENT OF TRANSPORTATION
DIVISION OF HIGHWAYS

SUBMITTED Oct 23 20 17

John F. ...
DEPUTY DIRECTOR OF HIGHWAYS, REGION ENGINEER

Jan 30 20 15
John D. Baranzoni, P.E.
actg ENGINEER OF DESIGN AND ENVIRONMENT

Jan 30 20 15
Omer Osman, P.E.
DIRECTOR OF HIGHWAYS, CHIEF ENGINEER

**PRINTED BY THE AUTHORITY
OF THE STATE OF ILLINOIS**

<u>INDEX OF SHEETS</u>	<u>STATE STANDARDS</u>	<u>DESCRIPTION</u>
1. TITLE SHEET	664001-02	CHAIN LINK FENCE
2. INDEX OF SHEETS LIST OF APPLICABLE STATE STANDARDS	665001-02	WOVEN WIRE FENCE
3. SUMMARY OF QUANTITIES	701001-02	OFF-RD OPERATIONS, 2L, 2W, MORE THAN 15' AWAY
4. COOK COUNTY (NORTH OF ILL 38) LOCATION MAP	701006-05	OFF-RD OPERATIONS, 2L, 2W, 15' TO 24" FROM PAVEMENT EDGE
5. DUPAGE COUNTY (NORTH OF ILL 38) LOCATION MAP	701101-04	OFF-RD OPERATIONS, MULTILANE, 15' TO 24" FROM PAVEMENT EDGE
6. KANE COUNTY (NORTH OF ILL 38) LOCATION MAP	701106-02	OFF-RD OPERATIONS, MULTILANE, MORE THAN 15' AWAY
7. LAKE COUNTY LOCATION MAP	701201-04	LANE CLOSURE, 2L, 2W, DAY ONLY, FOR SPEEDS > 45 MPH
8. MC HENRY COUNTY LOCATION MAP	701301-04	LANE CLOSURE, 2L, 2W, SHORT TIME OPERATIONS
9. DETAILS OF PEDESTRIAN BARRIER TYPE III (STD. 10-SS-514R)	701421-07	LANE CLOSURE, MULTILANE, DAY OPERATIONS ONLY, FOR SPEEDS > 45 MPH TO 55 MPH
10. CHAIN LINK FENCE (STD. 10-SS-506B)	701422-07	LANE CLOSURE, MULTILANE, FOR SPEEDS > 45 MPH TO 55 MPH
11. CHAIN LINK FENCE POST SLEEVE REPAIR DETAIL	701501-06	URBAN LANE CLOSURE, 2L, 2W, UNDIVIDED
12. PROPOSED PEDESTRIAN BARRIER AND CHAIN LINK FENCE WITH TENSION WIRE AND FENCE RAIL REMOVAL	701606-10	URBAN LANE CLOSURE, MULTILANE, 2W WITH MOUNTABLE MEDIAN
13. SPECIAL FENCE DETAILS	701701-09	URBAN LANE CLOSURE, MULTILANE INTERSECTION
14. TRAFFIC CONTROL DETAILS FOR SHOULDER CLOSURE AND PARTIAL RAMP CLOSURES	701801-05	SIDEWALK, CORNER OR CROSSWALK CLOSURE
	701901-04	TRAFFIC CONTROL DEVICES

GENERAL NOTE

THE CONTRACTOR SHALL CONTACT THE DISTRICT ONE TRAFFIC CONTROL SUPERVISOR AT (847) 705-4155 FOR EXPRESSWAYS AND (847) 705-4470 FOR ARTERIALS, A MINIMUM OF 72 HOURS IN ADVANCE OF BEGINNING WORK.

THE CONTRACTOR SHALL CALL ELECTRICAL MAINTENANCE CONTRACTOR TO LOCATE UNDERGROUND ELECTRICAL CABLE AND/OR FIBER PRIOR TO DIGGING TO REPAIR OR REPLACE FENCE POSTS.

FILE NAME *	USER NAME * Dorangeautab	DESIGNED -	REVISED -	STATE OF ILLINOIS DEPARTMENT OF TRANSPORTATION	INDEX OF SHEETS, STATE STANDARDS AND GENERAL NOTES	F.A. RTE.	SECTION	COUNTY	TOTAL SHEETS	SHEET NO.	
01\proj\work\pedit\gorangeautab\0416345	0110315\ahs\overudn	DRAWN -	REVISED -			VAR	2014-0761	VARIOUS	14	2	
	PLOT SCALE = 100.0120 / in.	CHECKED -	REVISED -			CONTRACT NO. 62A20					
Default	PLOT DATE = 10/24/2014	DATE -	REVISED -			SCALE:	SHEET	OF	SHEETS	STA.	TO
						ILLINOIS FED. AID PROJECT					

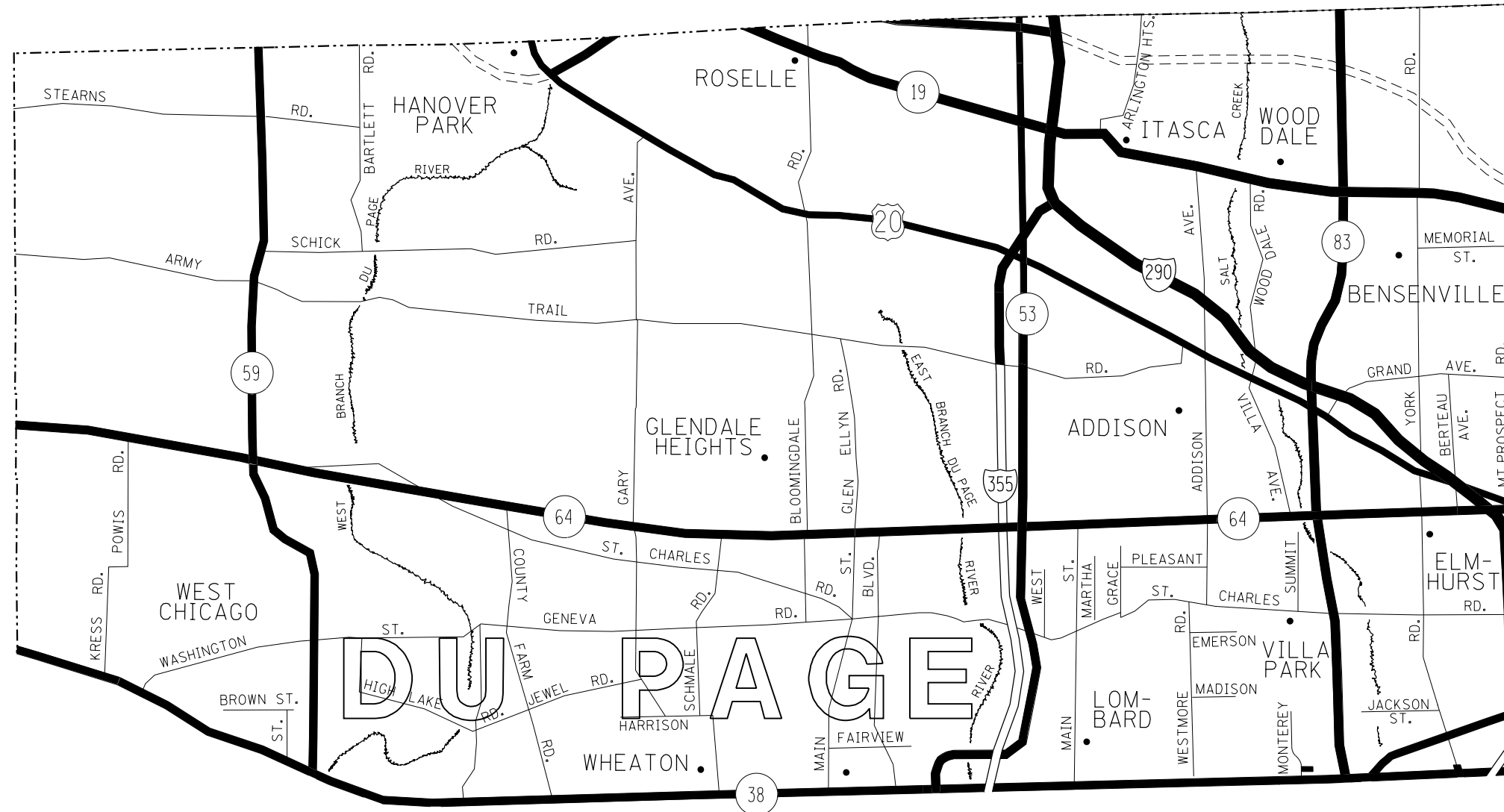
403

SUMMARY OF QUANTITIES			URBAN 100% STATE CONSTRUCTION TYPE CODE: 0021				
CODE NO	ITEM	UNIT	TOTAL QUANTITIES	75% CONT. MAINT.	25% MCHD		
66400505	CHAIN LINK FENCE, 8'	FOOT	111	83	28		
66500105	WOVEN WIRE FENCE, 4'	FOOT	11	8	3		
X6640100	FENCE RAIL REMOVAL	FOOT	1023	767	256		
X6640300	CHAIN LINK FENCE REMOVAL	FOOT	26	20	6		
X6640309	CHAIN LINK GATES (SPECIAL)	SO FT	448	336	112		
X6640590	CHAIN LINK FENCE POST SLEEVE REPAIR	EACH	26	20	6		
Z0009600	CHAIN LINK FABRIC, SPECIAL, 5'-0"	FOOT	14	10	4		
Z0009700	CHAIN LINK FABRIC, SPECIAL, 6'-0"	FOOT	1279	959	320		
Z0009800	CHAIN LINK FABRIC, SPECIAL, 7'-0"	FOOT	6	4	2		
Z0009810	CHAIN LINK FABRIC, SPECIAL, 8'-0"	FOOT	40	30	10		
Z0009900	CHAIN LINK FABRIC, TYPE 1, 4'-0"	FOOT	10735	8051	2684		
Z0010300	CHAIN LINK FABRIC, TYPE 3, SPECIAL	FOOT	256	192	64		
Z0020210	PULL POST ARRANGEMENT	EACH	2	1	1		
Z0033200	LINE POST, TYPE 1	EACH	461	346	115		
Z0033305	LINE POST, TYPE 3 SPECIAL	EACH	14	10	4		
Z0042500	POST, SPECIAL	EACH	72	54	18		

SUMMARY OF QUANTITIES			URBAN 100% STATE CONSTRUCTION TYPE CODE: 0021				
CODE NO	ITEM	UNIT	TOTAL QUANTITIES	75% CONT. MAINT.	25% MCHD		
Z0042505	POST REMOVAL AND REPLACEMENT	EACH	3	2	1		
Z0074000	TERMINAL POST, TYPE 1	EACH	26	20	6		
Z0074010	TERMINAL POST, TYPE 3 SPECIAL	EACH	3	2	1		
3							

10

FILE NAME =	USER NAME = Corangoulab	DESIGNED -	REVISED -	STATE OF ILLINOIS DEPARTMENT OF TRANSPORTATION	SUMMARY OF QUANTITIES			F.A. RTE.	SECTION	COUNTY	TOTAL SHEETS	SHEET NO.
C:\work\p1\p1\corangoulab\046345-010315-11\c101.dgn	DRAWN -	REVISED -	VAR					2014-0761	VARIOUS	14	3	
PLOT SCALE = 1000/31' / 1/4"	CHECKED -	REVISED -	CONTRACT NO. 62A20									
PLOT DATE = 10/24/2014	DATE -	REVISED -	FED. ROAD DIST. NO. 1 ILLINOIS FED. AID PROJECT									
SCALE:		SHEET NO. OF SHEETS STA. TO STA.										



DISTRICT NO. 1
MAINTENANCE DESIGNATIONS

- VARIOUS COLORS STATE HIGHWAYS & EXPRESSWAYS
- TOLLWAY
- CITY MAINTENANCE AGREEMENTS
- FUTURE HIGHWAYS
- VARIOUS AGENCIES HIGHWAYS

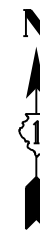
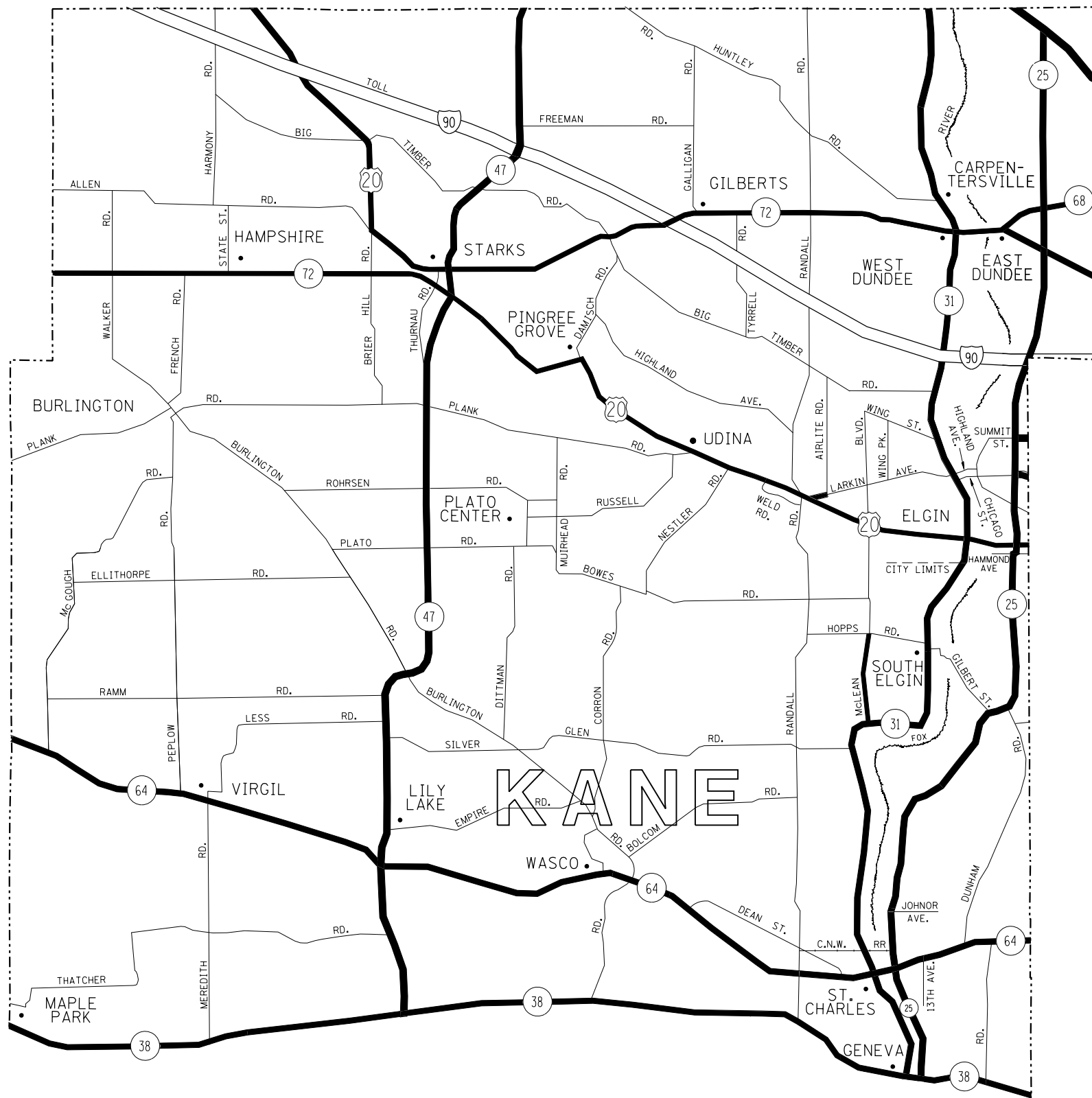
FILE NAME =	USER NAME = Gorengautob	DESIGNED -	REVISED -
ci:\pw\work\p\dot\gorengautob\d0416345\110315-sh-t-cover.dgn		DRAWN -	REVISED -
Default	PLOT SCALE = 100.0050' / in.	CHECKED -	REVISED -
	PLOT DATE = 10/24/2014	DATE -	REVISED -

STATE OF ILLINOIS
DEPARTMENT OF TRANSPORTATION

FENCE REPAIR LOCATION MAP - DuPAGE COUNTY
SOUTH OF IL RTE 38

SCALE: SHEET OF SHEETS STA. TO STA.

F.A. RTE.	SECTION	COUNTY	TOTAL SHEETS	SHEET NO.
VAR	2014-0761	VARIOUS	14	5
CONTRACT NO. 62A20			ILLINOIS FED. AID PROJECT	



DISTRICT NO. 1
MAINTENANCE DESIGNATIONS

- VARIOUS COLORS STATE HIGHWAYS & EXPRESSWAYS
- TOLLWAY
- CITY MAINTENANCE AGREEMENTS
- FUTURE HIGHWAYS
- VARIOUS AGENCIES HIGHWAYS

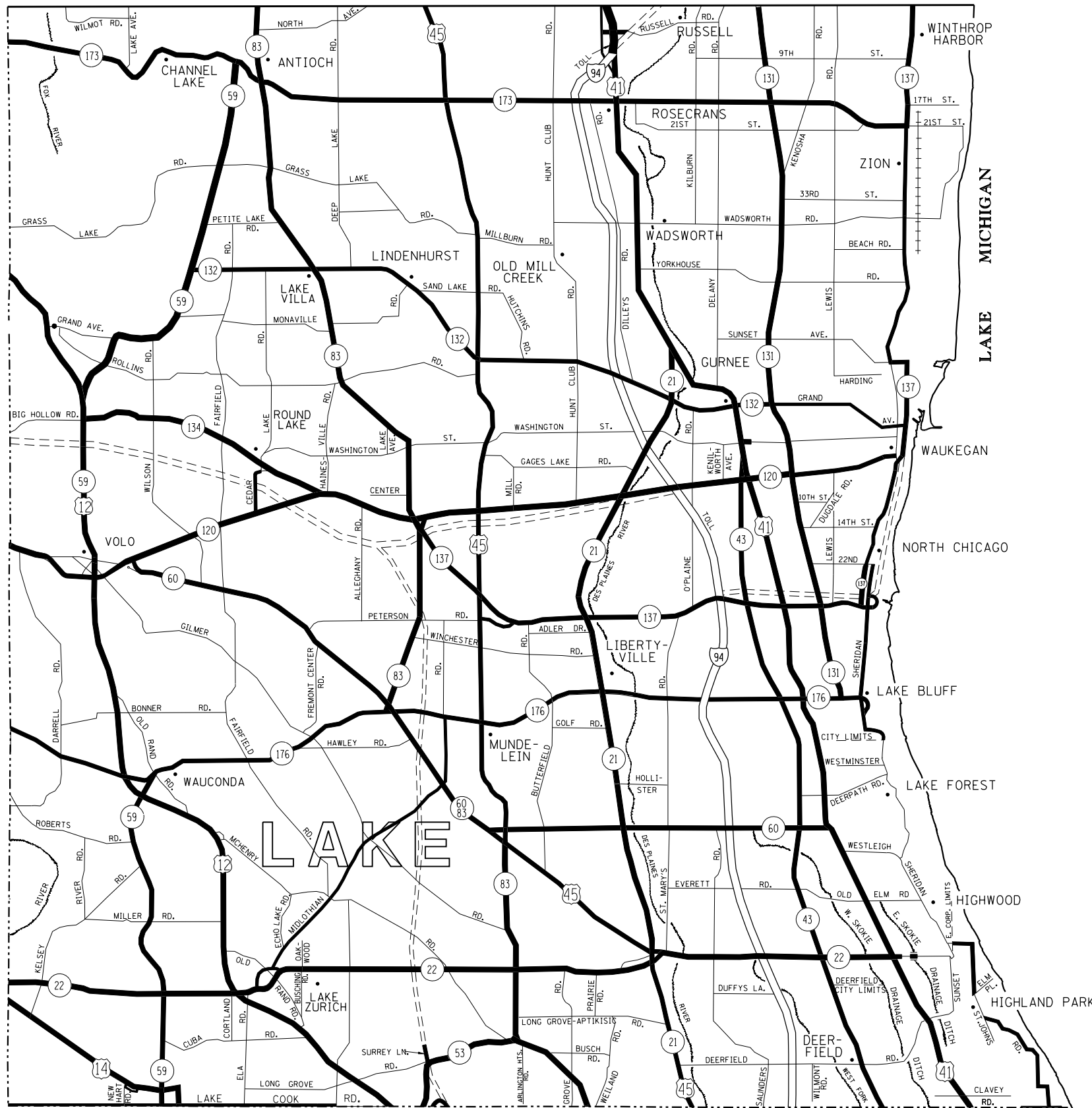
FILE NAME =	USER NAME = Gorengautab	DESIGNED -	REVISED -
ct:\pw\work\p\dot\gorengautab\d0416345\110315-shr-cover.dgn		DRAWN -	REVISED -
Default	PLOT SCALE = 100.0000' / in.	CHECKED -	REVISED -
	PLOT DATE = 10/24/2014	DATE -	REVISED -

STATE OF ILLINOIS
DEPARTMENT OF TRANSPORTATION

FENCE REPAIR LOCATION MAP - KANE COUNTY
SOUTH OF IL RTE 38

SCALE: SHEET OF SHEETS STA. TO STA.

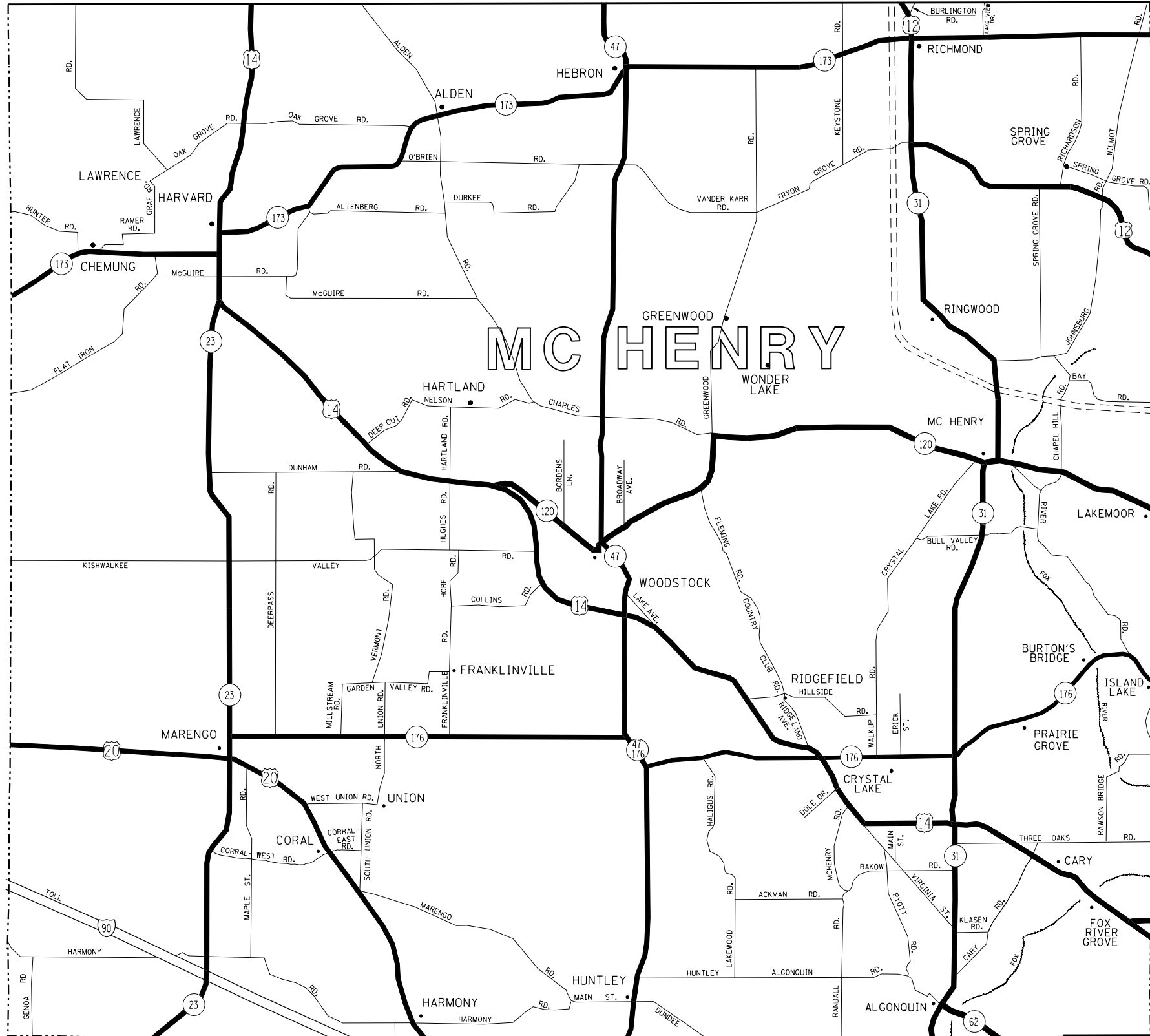
F.A. RTE.	SECTION	COUNTY	TOTAL SHEETS	SHEET NO.
VAR	2014-0761	VARIOUS	14	6
			CONTRACT NO. 62A20	
ILLINOIS FED. AID PROJECT				



DISTRICT NO. 1 MAINTENANCE DESIGNATIONS

- VARIOUS COLORS STATE HIGHWAYS & EXPRESSWAYS
- TOLLWAY
- CITY MAINTENANCE AGREEMENTS
- FUTURE HIGHWAYS
- VARIOUS AGENCIES HIGHWAYS

FILE NAME =	USER NAME = Gorengautab	DESIGNED -	REVISED -	STATE OF ILLINOIS DEPARTMENT OF TRANSPORTATION	FENCE REPAIR LOCATION MAP - WILL COUNTY	F.A. RTE.	SECTION	COUNTY	TOTAL SHEETS	SHEET NO.	
Default	c:\pw\work\p\dot\gorengautab\d0416345\110315-sh-t-cover.dgn	DRAWN -	REVISED -			VAR	2014-0761	VARIOUS	14	7	
	PLOT SCALE = 100.0000' / in.	CHECKED -	REVISED -			CONTRACT NO. 62A20					
	PLOT DATE = 10/24/2014	DATE -	REVISED -			SCALE:	SHEET	OF	SHEETS	STA.	TO
ILLINOIS FED. AID PROJECT											



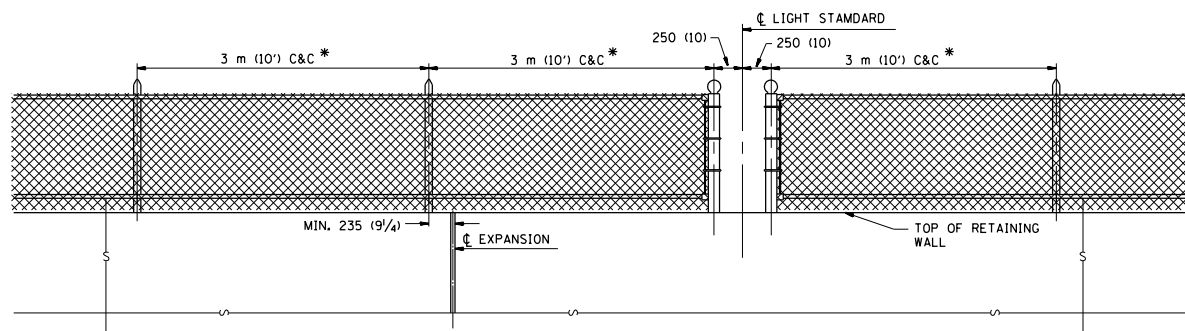
DISTRICT NO. 1 MAINTENANCE DESIGNATIONS

- VARIOUS COLORS STATE HIGHWAYS & EXPRESSWAYS
- == TOLLWAY
- == CITY MAINTENANCE AGREEMENTS
- - - - FUTURE HIGHWAYS
- VARIOUS AGENCIES HIGHWAYS

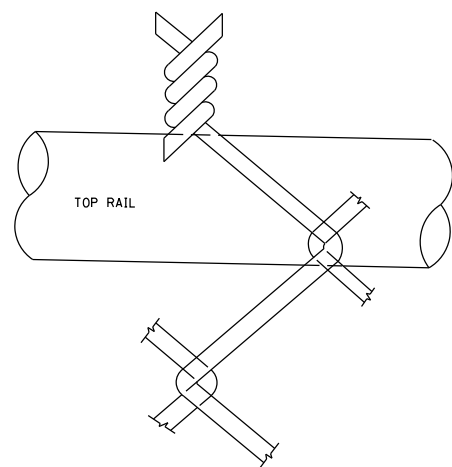
FILE NAME = c:\pw\work\p1dot\gorengautab\d0416345\110315-sh-t-cover.dgn	USER NAME = Gorengautab	DESIGNED -	REVISED -	STATE OF ILLINOIS DEPARTMENT OF TRANSPORTATION	F.A. RTE.	SECTION	COUNTY	TOTAL SHEETS	SHEET NO.
	PLOT SCALE = 100.0000' / 1in.	DRAWN -	REVISED -		VAR	2014-0761	VARIOUS	14	8
Default	PLOT DATE = 10/24/2014	CHECKED -	REVISED -	SCALE:	SHEET	OF	SHEETS	STA.	TO STA.
					ILLINOIS FED. AID PROJECT CONTRACT NO. 62A20				

NOTE

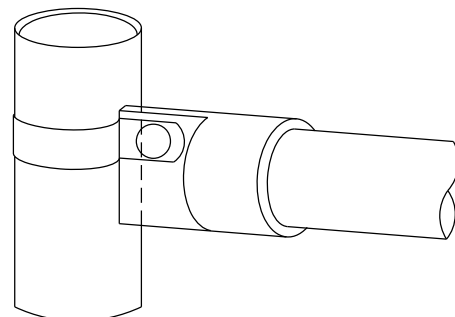
* MAXIMUM POST SPACING SHALL BE 3 m (10') C&C EXCEPT WHERE OTHERWISE SHOWN ON PLANS



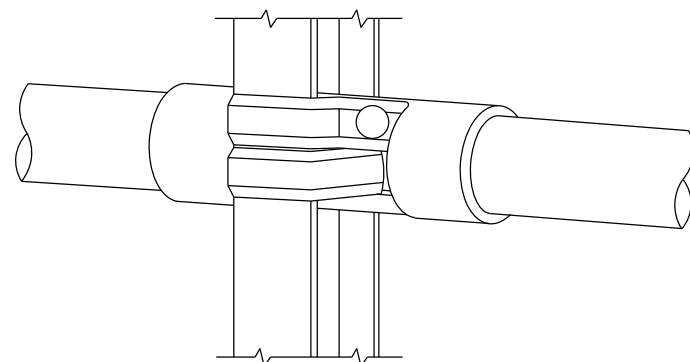
ELEVATION VIEW OF RETAINING WALL WITH PEDESTRIAN BARRIER TYPE III



WIRE MESH FABRIC TO BE BARBED AT THE TOP

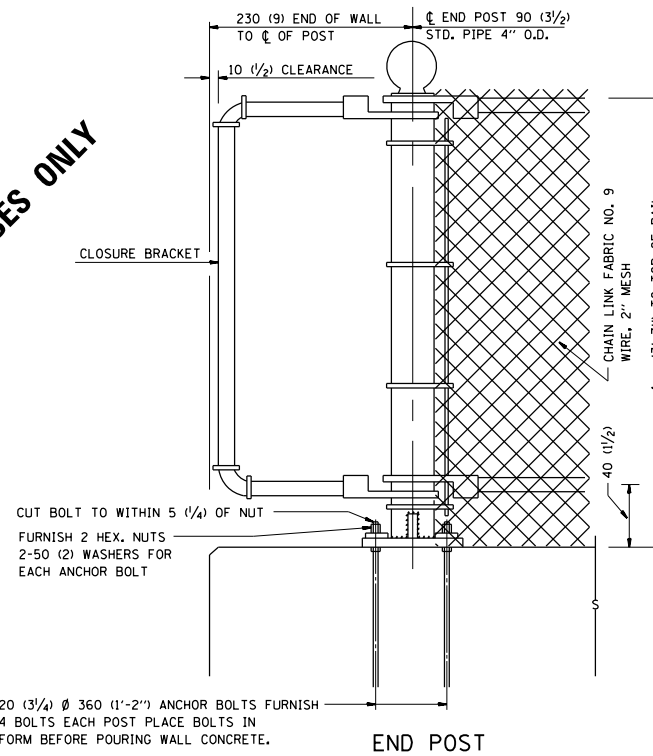


RAIL FITTING AT END POSTS



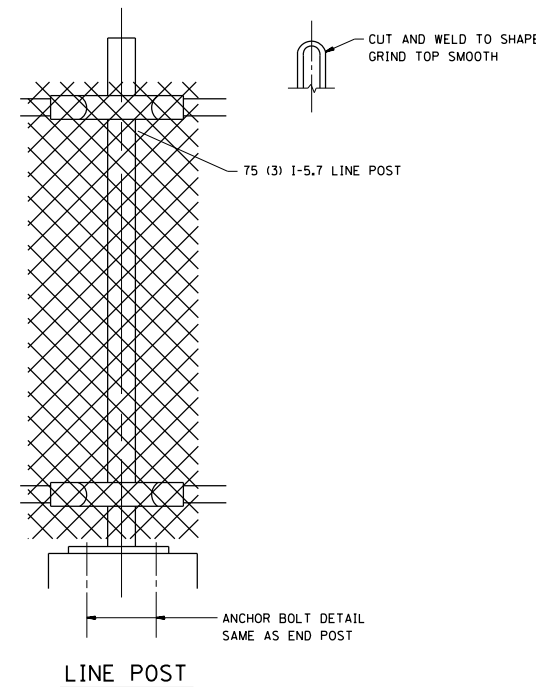
RAIL FITTING ON SECTION LINE POST

FOR INFORMATIONAL PURPOSES ONLY

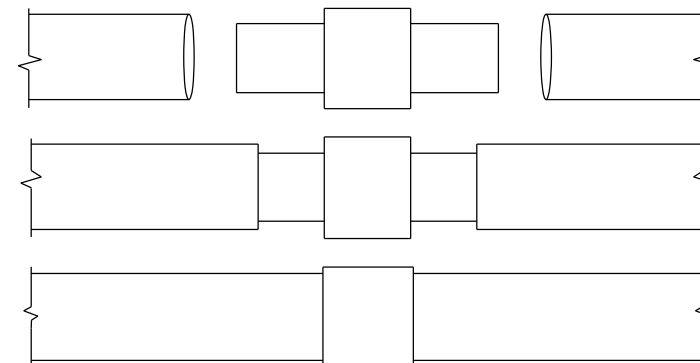


END POST

NOTE:
THE COST OF FURNISHING ANCHOR BOLTS, NUTS, & WASHERS TO BE INCIDENTAL

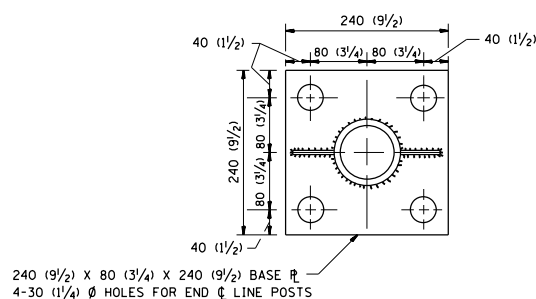


LINE POST



EXPANSION COUPLING DETAIL

NOTE:
EXP. COUPLING TO APPEAR IN TOP AND BOTTOM RAILS WHERE EVER EXP. JT. APPEARS IN STRUCTURE.



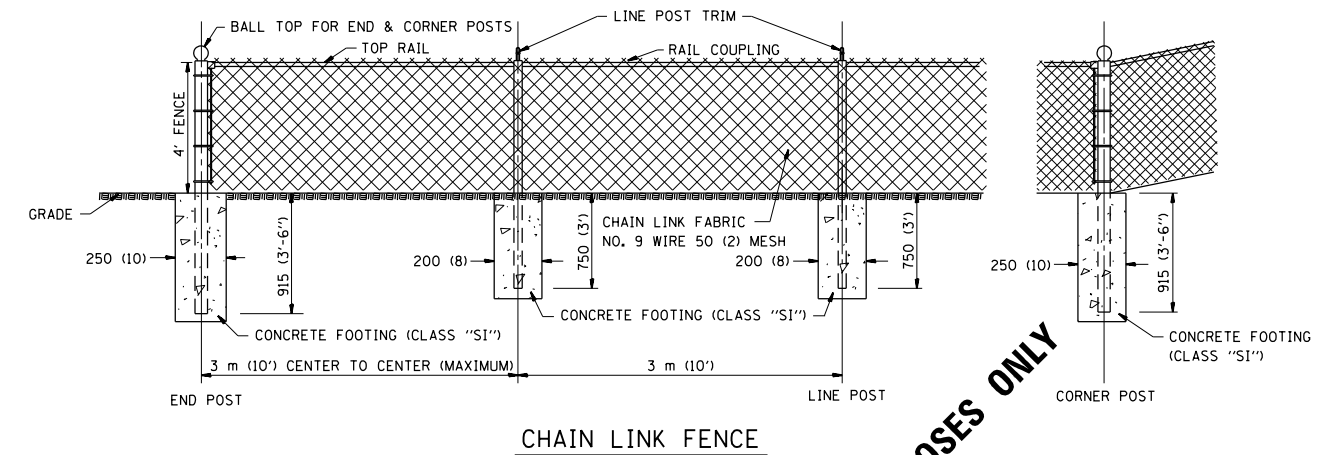
240 (9 1/2) X 80 (3 1/4) X 240 (9 1/2) BASE PLATE
4-30 (1 1/4) Ø HOLES FOR END LINE POSTS

ANCHOR PLATE DETAILS

NOTE:
POST, PLATE AND GUSSET ASSEMBLY SHALL BE GALVANIZED AFTER ALL CUTTING, DRILLING, WELDING, AND FABRICATION HAVE BEEN COMPLETED. THE GALVANIZED COATING SHALL CONFORM TO THE REQUIREMENTS OF AASHTO M 120. THE GALVANIZED COATING SHALL NOT BE LESS THAN 610 G/50 M (2.0 OZ./SQ. FT.) OF SURFACE.

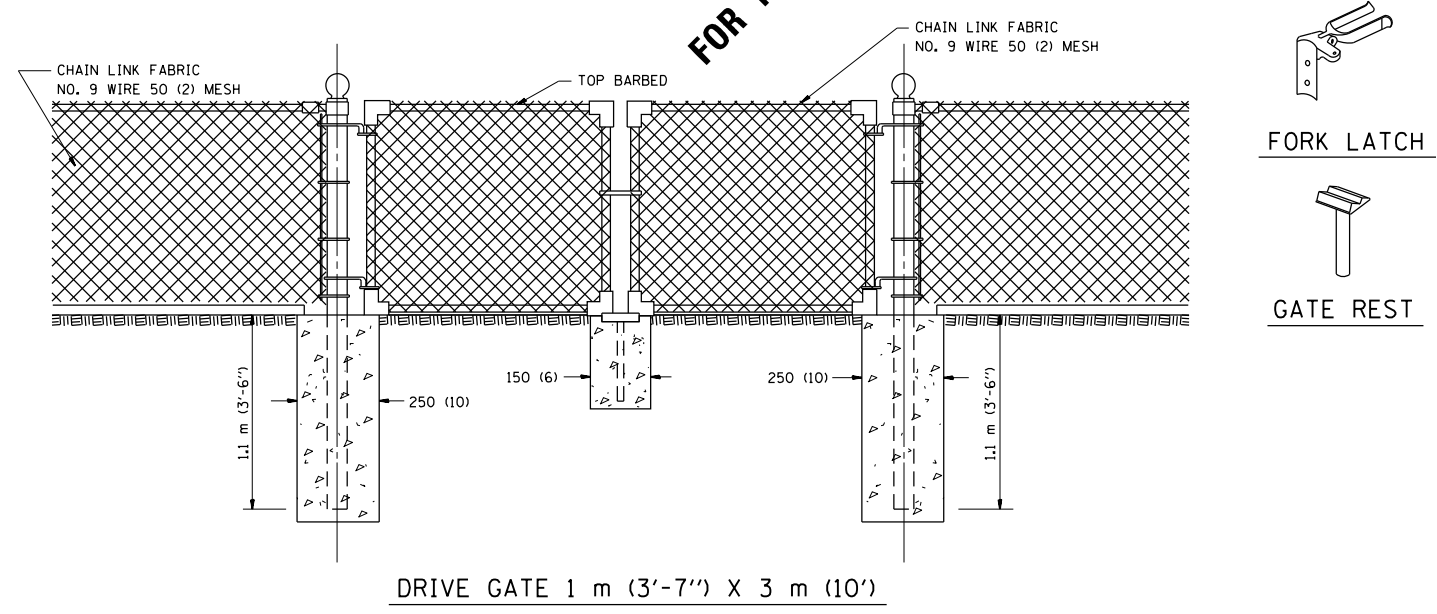
ALL DIMENSIONS ARE IN MILLIMETERS (INCHES) UNLESS OTHERWISE SHOWN.

FILE NAME =	USER NAME = Gorengautab	DESIGNED -	REVISED -	STATE OF ILLINOIS DEPARTMENT OF TRANSPORTATION	PEDESTRIAN BARRIER TYPE III STD. 10-SS-514 R				F.A. RTÉ.	SECTION	COUNTY	TOTAL SHEETS	SHEET NO.
et:\pwork\pwork\gorengautab\d0416345\0110315-sh-t-cover.dgn	PLOT SCALE = 100.0038' / 1m.	DRAWN -	REVISED -						VAR	2014-0761	VARIOUS	14	9
PLOT DATE = 10/24/2014	DATE -	CHECKED -	REVISED -		SCALE: SHEET NO. OF SHEETS STA. TO STA.				CONTRACT NO. 62A20				
		DATE -	REVISED -						FED. ROAD DIST. NO. ILLINOIS FED. AID PROJECT				

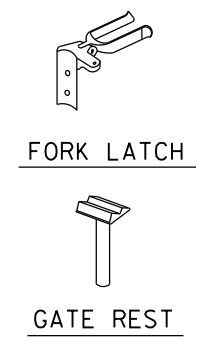


CHAIN LINK FENCE

FOR INFORMATIONAL PURPOSES ONLY



DRIVE GATE 1 m (3'-7'') X 3 m (10')



ALL DIMENSIONS ARE IN MILLIMETERS (INCHES) UNLESS OTHERWISE SHOWN.

NOTE:
 THE CHAIN LINK FENCE AS SHOWN HEREIN SHALL BE CONSTRUCTED AT SUCH LOCATIONS AS SHOWN ON PLANS AND IN ACCORDANCE WITH THE SPECIAL PROVISIONS

 THE ENGINEER SHALL ESTABLISH ALL NECESSARY LINE AND GRADE PRIOR TO THE ERECTION OF THE FENCE IN CONFORMANCE WITH THE PLANS

FILE NAME =	USER NAME = Gorengautab	DESIGNED -	REVISED -
et:\pw\work\p\idot\gorengautab\d0416345\0110315-sht-cover.dgn		DRAWN -	REVISED -
PLOT SCALE = 100.0000' / in.		CHECKED -	REVISED -
PLOT DATE = 10/24/2014		DATE -	REVISED -

STATE OF ILLINOIS
 DEPARTMENT OF TRANSPORTATION

CHAIN LINK FENCE
 STD. 10-SS-506 B

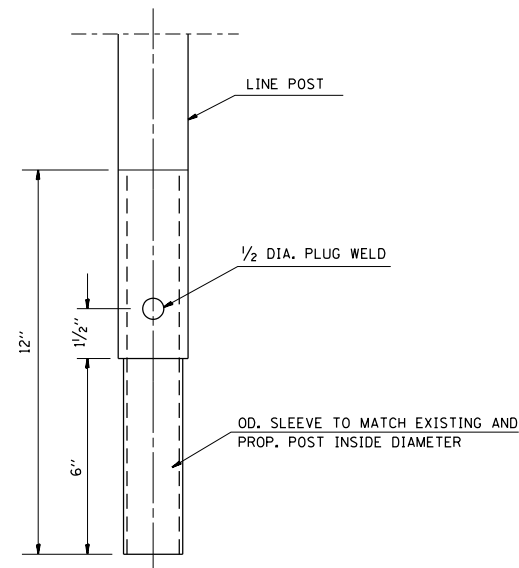
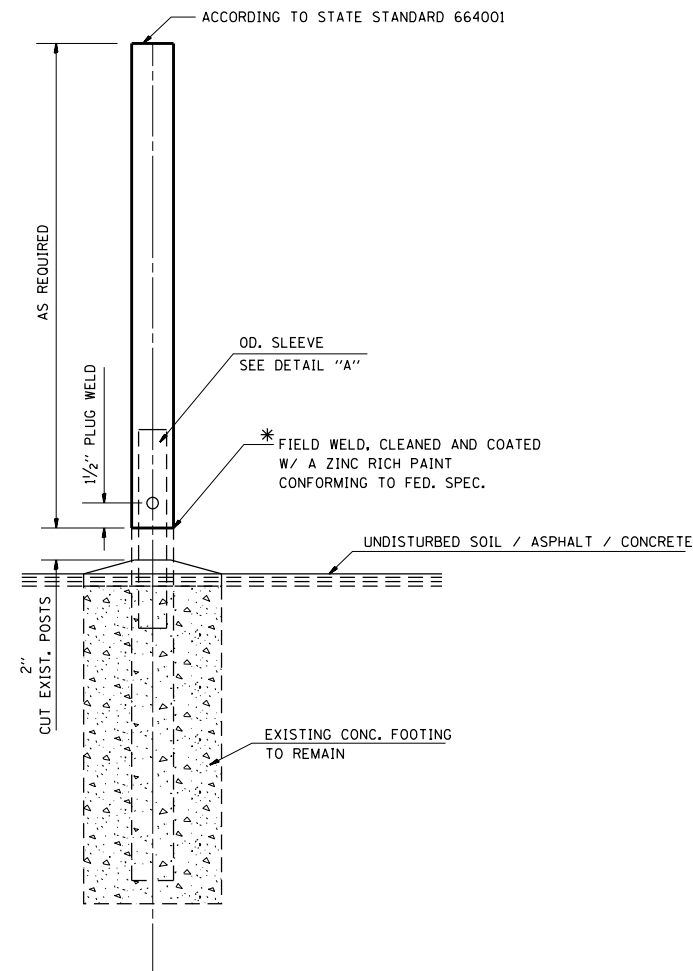
SCALE:	SHEET NO.	OF	SHEETS	STA.	TO	STA.
--------	-----------	----	--------	------	----	------

F.A. RTE.	SECTION	COUNTY	TOTAL SHEETS	SHEET NO.
VAR	2014-0761	VARIOUS	14	10
FED. ROAD DIST. NO.			ILLINOIS FED. AID PROJECT	
CONTRACT NO. 62A20				

GENERAL NOTES:

THIS WORK CONSISTS OF FURNISHING ALL LABOR, MATERIALS, TOOLS AND EQUIPMENT TO REPAIR CHAIN LINK FENCE POST SLEEVE AS SHOWN ON THE PLANS OR AS DIRECTED BY THE ENGINEER, AND IN ACCORDANCE WITH STATE STANDARD 664001.

BASIS OF PAVEMENT: THIS WORK SHALL BE PAID FOR AT THE CONTRACT UNIT PRICE EACH FOR "CHAIN LINK FENCE POST SLEEVE REPAIR" WHICH PRICE SHALL BE PAYMENT IN FULL TO COMPLETE THE WORK AS SPECIFIED HEREIN.



SLEEVE DET. DWG
DETAIL "A"
SLEEVE DETAIL

* THIS WORK SHALL BE INCLUDED IN THE COST OF THE PAY ITEM "CHAIN LINK FENCE POST SLEEVE REPAIR"

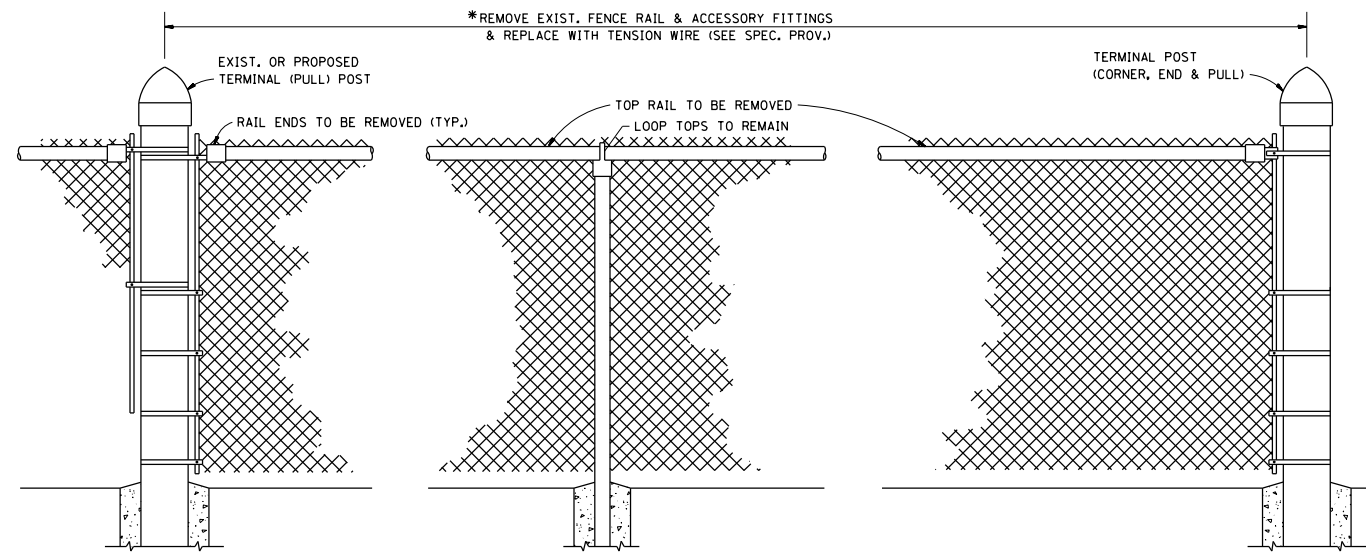
FILE NAME =	USER NAME = Gorengautab	DESIGNED -	REVISED -
et:\pw\work\p\dot\gorengautab\d0416345\0110315-sh-t-cover.dgn		DRAWN -	REVISED -
PLOT SCALE = 100.0001' / in.		CHECKED -	REVISED -
PLOT DATE = 10/24/2014		DATE -	REVISED -

**STATE OF ILLINOIS
DEPARTMENT OF TRANSPORTATION**

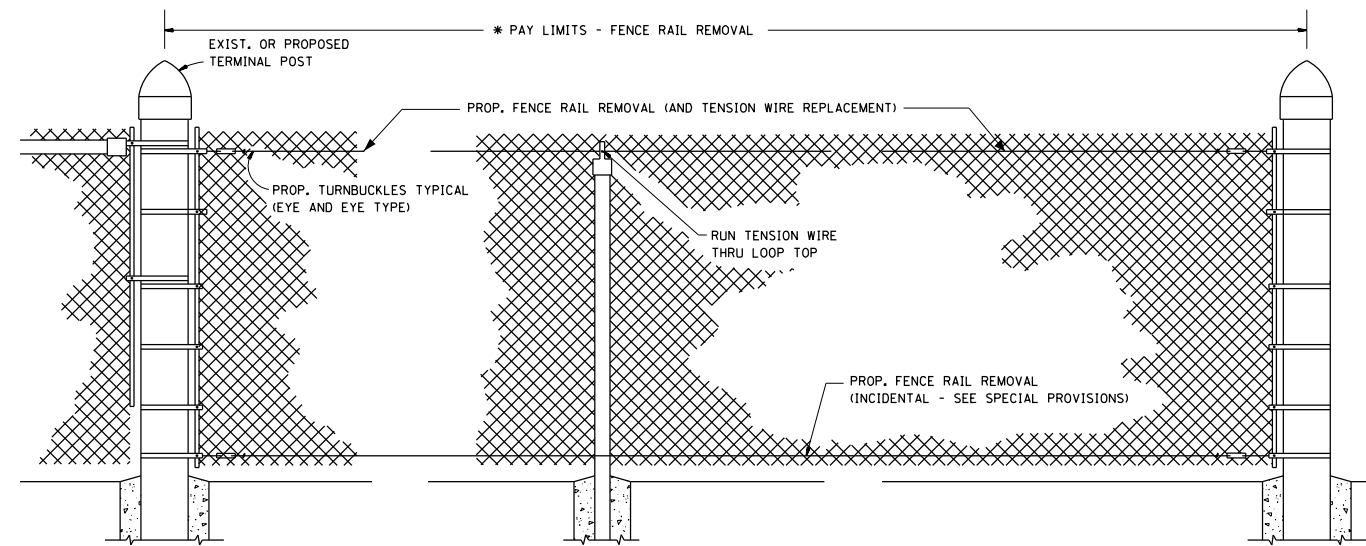
**CHAIN LINK FENCE POST SLEEVE
REPAIR DETAIL**

SCALE: SHEET NO. OF SHEETS STA. TO STA.

F.A. RTE.	SECTION	COUNTY	TOTAL SHEETS	SHEET NO.
VAR	2014-076I	VARIOUS	14	11
FED. ROAD DIST. NO. ILLINOIS FED. AID PROJECT			CONTRACT NO. 62A20	



EXIST. CHAIN LINK FENCE WITH TOP RAIL



PROP. CHAIN LINK FENCE WITH "FENCE RAIL REMOVAL"

* THE ENGINEER IN CHARGE SHALL DETERMINE THE LENGTH OF FENCE RAIL TO BE REMOVED & REPLACED WITH "TENSION WIRE"

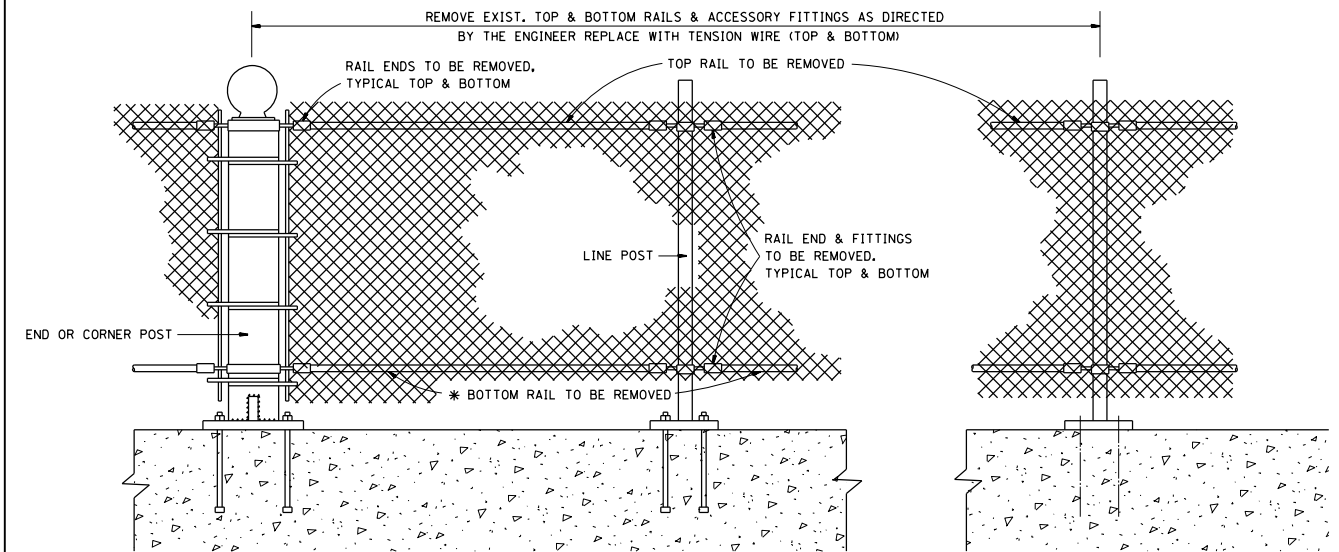
GENERAL NOTES

FENCE RAIL REMOVAL: THIS ITEM CONSISTS OF REMOVING EXISTING TOP OR BOTTOM RAIL, (DAMAGED OR UNDAMAGED) AND REPLACING WITH TENSION WIRE. BOTTOM TENSION WIRE SHALL BE CONSIDERED INCIDENTAL EXCEPT AT LOCATIONS OF EXISTING BOTTOM RAIL REMOVAL.

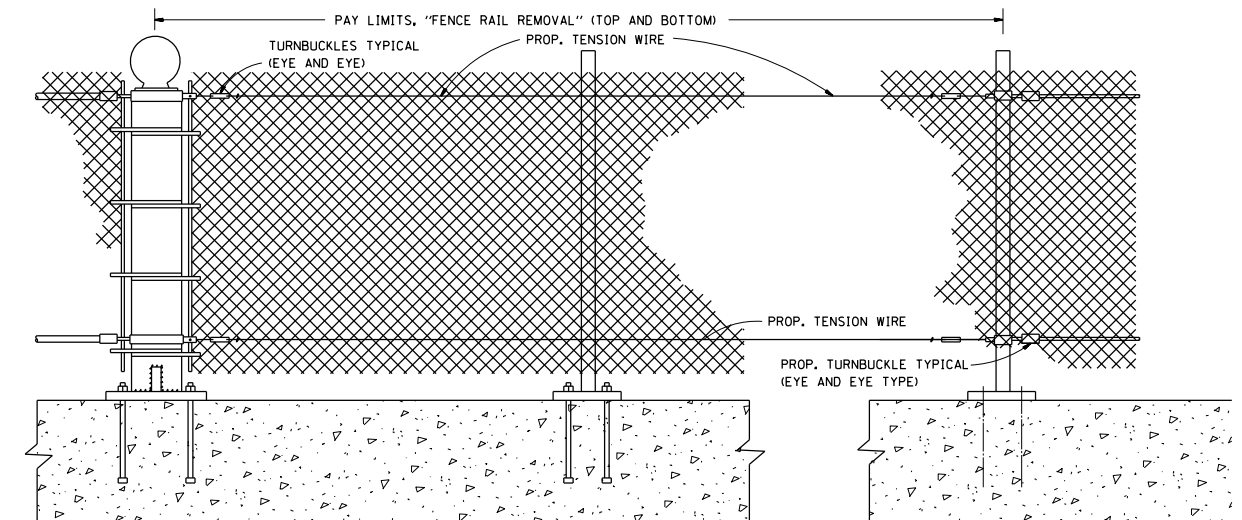
TENSION WIRE: THIS ITEM CONSISTS OF INSTALLING TENSION WIRE, TOP OR BOTTOM, WHERE TOP OR BOTTOM RAIL IS NON-EXISTENT, OR WHERE EXISTING DAMAGED TENSION WIRE IS REMOVED AND REPLACED BY NEW TENSION WIRE.

ALL WORK AND MATERIALS SHALL BE IN ACCORDANCE WITH THE PLANS, SPECIAL PROVISIONS, STANDARD SPECIFICATIONS AND STANDARD 664001.

REPLACEMENT OF OTHER FENCE COMPONENT PARTS SHALL BE MEASURED AND PAID FOR SEPARATELY AS DESCRIBED IN THE SPECIAL PROVISIONS.



EXIST. PEDESTRIAN BARRIER TYPE 3 WITH TOP AND BOTTOM RAILS



PROP. PEDESTRIAN BARRIER TYPE 3 WITH FENCE RAIL REMOVAL

ALL DIMENSIONS ARE IN MILLIMETERS (INCHES) UNLESS OTHERWISE SHOWN.

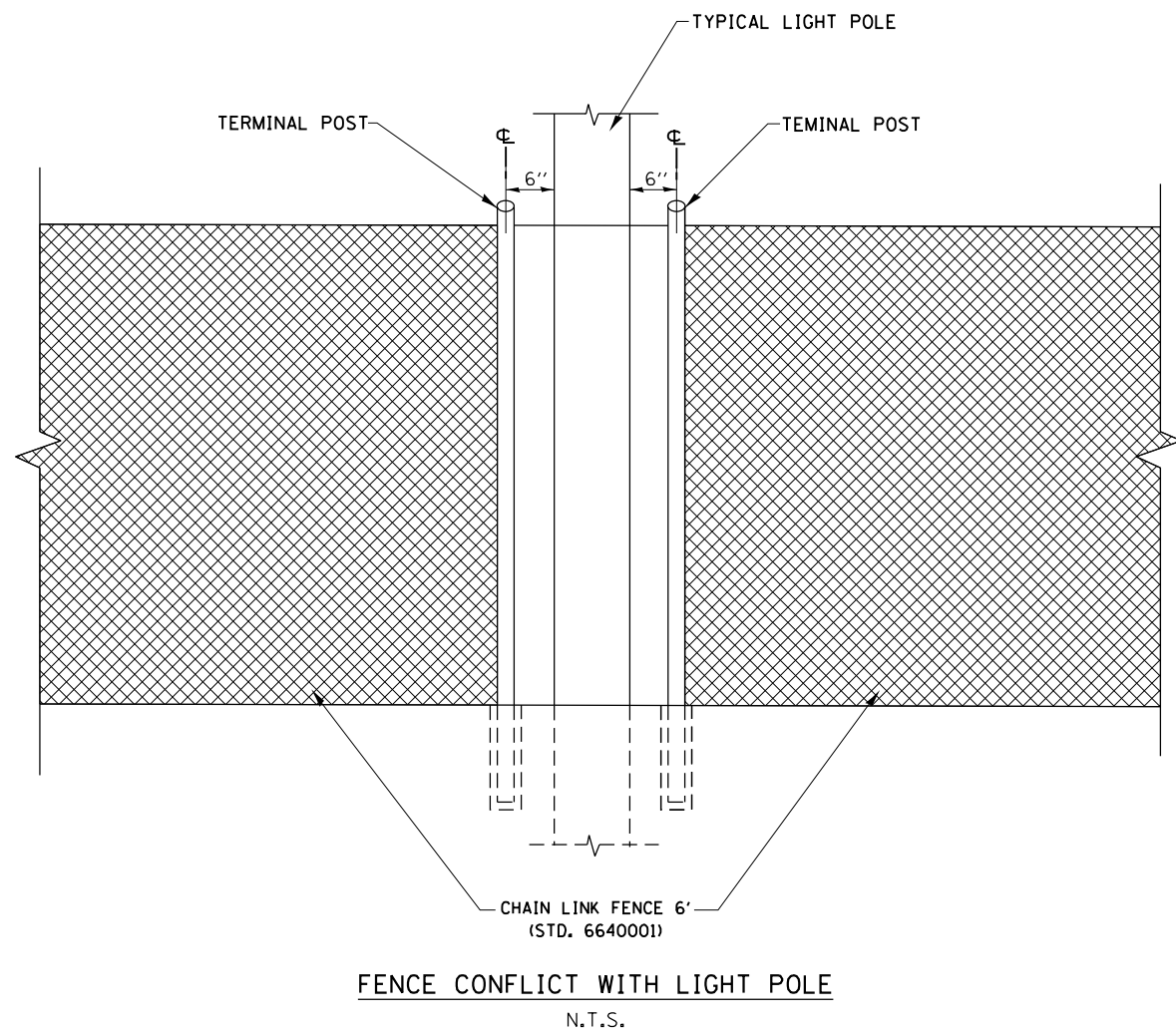
FILE NAME =	USER NAME = Gorengautab	DESIGNED -	REVISED -
et:\pw\work\p1dot\gorengautab\d0416345\0110315-sh-t-cover.dgn		DRAWN -	REVISED -
	PLOT SCALE = 100.0002' / 1in.	CHECKED -	REVISED -
	PLOT DATE = 10/24/2014	DATE -	REVISED -

**STATE OF ILLINOIS
DEPARTMENT OF TRANSPORTATION**

**PROPOSED PEDESTRIAN BARRIER AND
CHAIN LINK FENCE WITH TENSION WIRE AND FENCE RAIL REMOVAL**

SCALE: SHEET NO. OF SHEETS STA. TO STA.

F.A. RTE.	SECTION	COUNTY	TOTAL SHEETS	SHEET NO.
VAR	2014-0761	VARIOUS	14	12
CONTRACT NO. 62A20				
FED. ROAD DIST. NO. ILLINOIS FED. AID PROJECT				



GALVANIZED POSTS SHALL CONFORM TO THE REQUIREMENTS OF STANDARD 864001 POSTS UTILIZED IN THE REPAIR WORK SHALL BE THE SAME TYPE SHAPE AS POSTS ADJACENT TO THE REPAIR AREA UNLESS OTHERWISE DIRECTED BY THE ENGINEER. NO USED MATERIALS WILL BE PERMITTED.

REMOVAL OF EXISTING FENCE POSTS BY DRILLING OR CORING AND GROUTING A NEW FENCE POST (LINE TERMINAL, END CORNER AND GATE) IN ACCORDANCE WITH THE APPLICABLE PORTIONS OF SECTIONS 664 AND 1025 OF THE STANDARD SPECIFICATIONS.

EXISTING LOCATION POST MUST BE USED. NO NEW POST HOLES WILL BE ALLOWED.

EXIST. CONC. POST FOUNDATION

EXIST. CONC. PAD

1/4" - 1/2" MIN.

POST REMOVAL AND REPLACEMENT SHALL BE FULL DEPTH.

POST REMOVAL AND REPLACEMENT

FILE NAME =	USER NAME = Gorengautab	DESIGNED -	REVISED -
c:\pwork\pwork\gorengautab\0416345\0110315-sht-cover.dgn		DRAWN -	REVISED -
Default	PLOT SCALE = 100.0000' / 1in.	CHECKED -	REVISED -
	PLOT DATE = 10/24/2014	DATE -	REVISED -

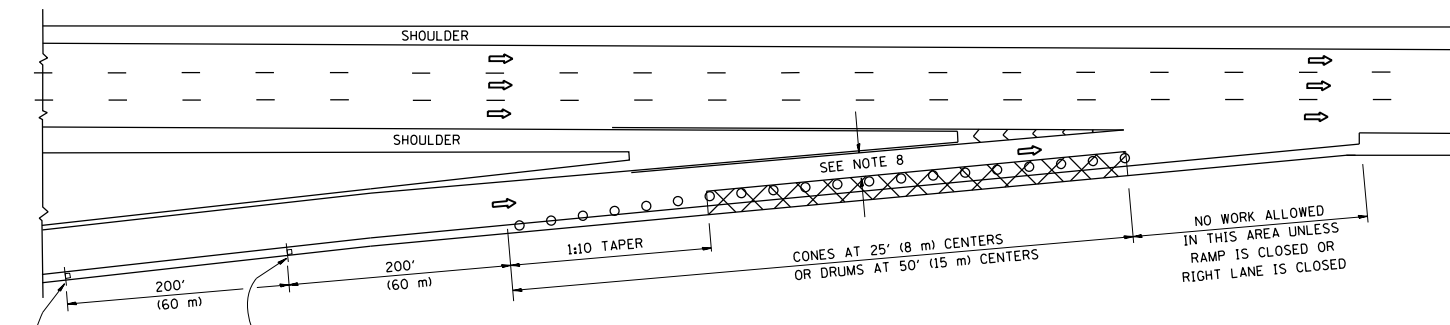
STATE OF ILLINOIS
DEPARTMENT OF TRANSPORTATION

SPECIAL FENCE DETAILS

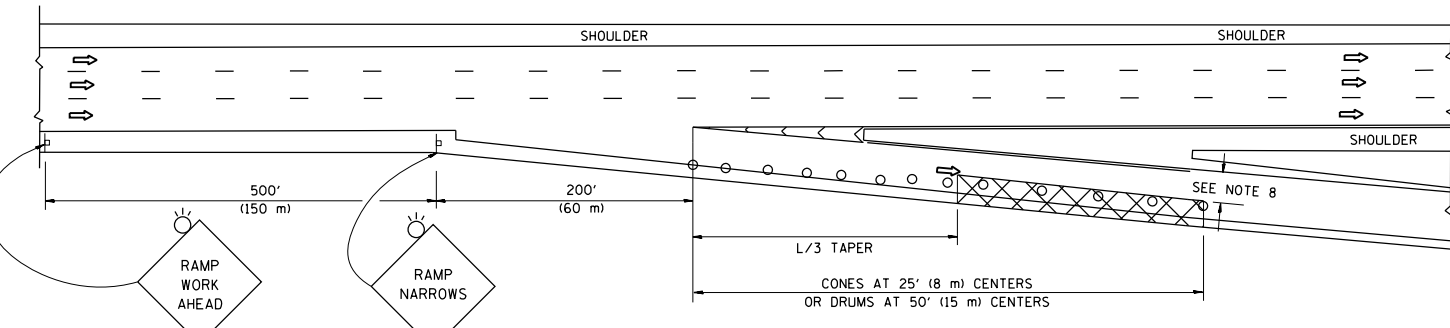
SCALE: SHEET OF SHEETS STA. TO STA.

F.A. RTE.	SECTION	COUNTY	TOTAL SHEETS	SHEET NO.
VAR	2014-0761	VARIOUS	14	13
CONTRACT NO. 62A20				
ILLINOIS FED. AID PROJECT				

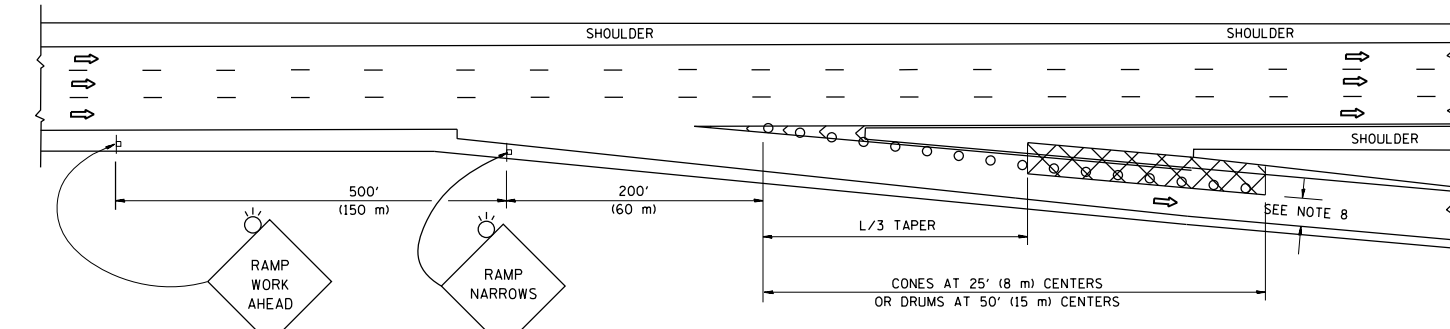
PARTIAL RAMP CLOSURE DETAILS



TYPICAL ENTRANCE RAMP



TYPICAL EXIT RAMP



TYPICAL EXIT RAMP

SYMBOLS

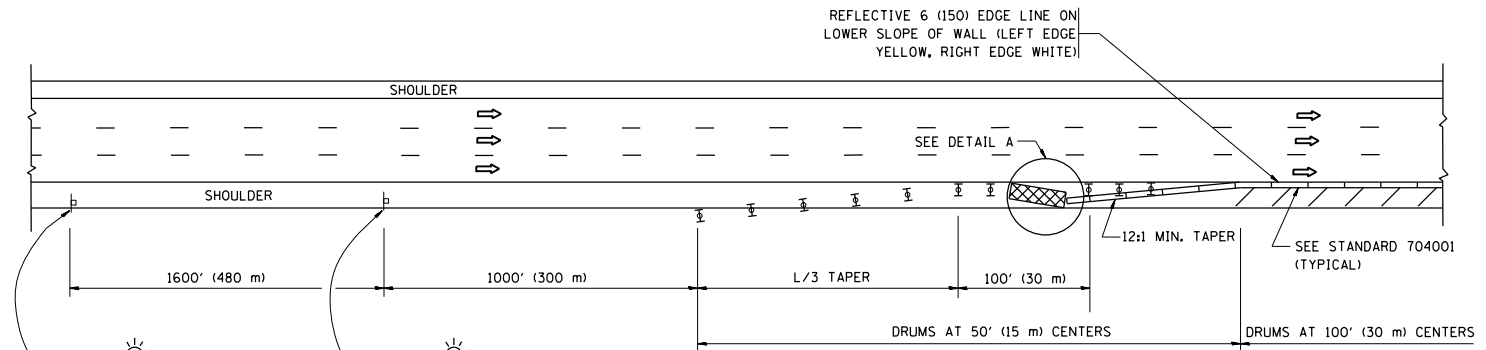
- ACTIVE WORK AREA
- SIGN ON PORTABLE OR PERMANENT SUPPORT
- FLAGGER WITH CONTROL SIGN
- TYPE II BARRICADE OR DRUM WITH STEADY BURN MONO-DIRECTIONAL LIGHT
- CONE, DRUM OR BARRICADE
- IMPACT ATTENUATOR OF TYPE AND TEST LEVEL SPECIFIED

GENERAL NOTES

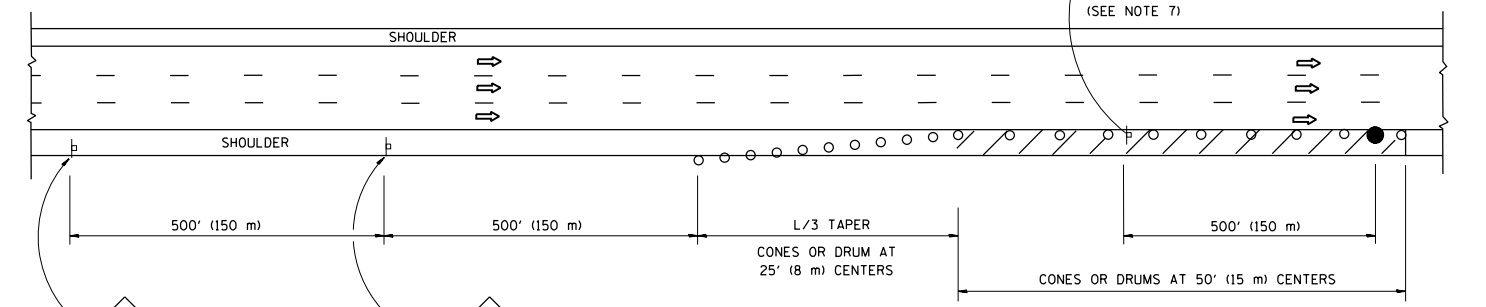
1. THE "L" DISTANCE EQUALS:

SPEED LIMIT	FORMULAS
45 mph (80 km/h) OR GREATER:	METRIC ENGLISH L=0.65(W)(S) L=(W)(S)
	W = WIDTH OF OFFSET IN FEET (METERS) S = NORMAL POSTED SPEED MPH (KM/H)
2. PLASTIC DRUMS WITH HIGH PERFORMANCE REFLECTIVE SHEETING AND STEADY BURNING LIGHTS ARE REQUIRED FOR ALL NIGHTTIME CLOSURES.
3. ALL SIGNS SHALL BE POST MOUNTED IF THE CLOSURE TIME EXCEEDS FOUR DAYS.
4. FLASHING LIGHTS SHALL BE USED DURING THE HOURS OF DARKNESS AND SHALL BE INSTALLED ABOVE THE FIRST TWO SETS OF SIGNS.

SHOULDER CLOSURE DETAILS

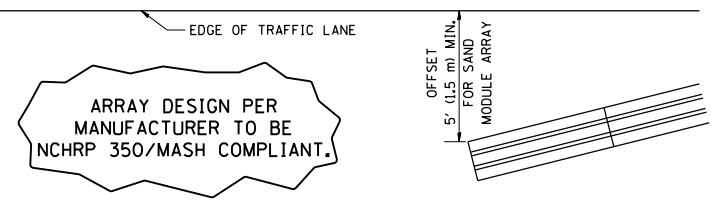


PERMANENT SHOULDER CLOSURE



DAYTIME SHOULDER CLOSURE

THIS DETAIL IS USED WHERE:
1. VEHICLES, EQUIPMENT, WORKERS OR THEIR ACTIVITIES ENCR OACH IN AN AREA CLOSER THAN 15' (4.5 m) TO THE EDGE OF PAVEMENT FOR A PERIOD IN EXCESS OF 15 MINUTES.



DETAIL "A"
IMPACT ATTENUATOR, TEMPORARY
(SEE NOTE 5)

5. THE IMPACT ATTENUATOR, TEMPORARY IS NOT REQUIRED WHEN THE TEMPORARY CONCRETE BARRIER WALL IS PROTECTED BY OR IS TIED INTO THE EXISTING GUARDRAIL. IF OFFSET IS LESS THAN 5 FEET USE NARROW USE TYPE DEVICE TO MEET NCHRP350/MASH.
6. AUTHORIZATION FROM THE DISTRICT'S BUREAU OF TRAFFIC IS REQUIRED FOR ALL FREEWAY CLOSURES.
7. THE FLAGGER AND FLAGGER SIGN ARE REQUIRED AT THE ABOVE WORK SITES WHEN:
 - a. FOUR OR MORE WORK VEHICLES ENTER THE TRAFFIC LANES IN A ONE HOUR PERIOD.
 - b. THE WORK AVTIVITY REQUIRES FREQUENT ENCR OACHMENT INTO THE LANE OPEN TO TRAFFIC.
 THE FLAGGER SHALL BE STATIONED APPROXIMATELY 100' (30 m) TO 200' (60 m) IN ADVANCE OF THE WORKERS.
8. 12" MIN. WIDTH TANGENT SECTION
16" MIN. WIDTH CURVE SECTION.

ALL DIMENSIONS ARE IN INCHES (MILLIMETERS) UNLESS OTHERWISE SHOWN.

FILE NAME =	USER NAME = Gorengautab	DESIGNED -	REVISED - J.A.F. 12-06	STATE OF ILLINOIS DEPARTMENT OF TRANSPORTATION	TRAFFIC CONTROL DETAILS FOR FREEWAY SHOULDER CLOSURES AND PARTIAL RAMP CLOSURES	F.A. RTE.	SECTION	COUNTY	TOTAL SHEETS	SHEET NO.	
ci:\pwork\pwork\gorengautab\d0416345\110315-sh-t-cover.dgn	110315-sh-t-cover.dgn	DRAWN - D.W.S.	REVISED - S.P.B. 01-07			VAR	2014-0761	VARIOUS	14	14	
PLOT SCALE = 99.9994' / in.		CHECKED -	REVISED - S.P.B. 12-09			TC-17		CONTRACT NO. 62A20			
PLOT DATE = 10/24/2014		DATE - 11-96	REVISED - M.D. 06-13			SCALE: NONE	SHEET NO. 1 OF 1 SHEETS	STA.	TO STA.		FED. ROAD DIST. NO. 1 ILLINOIS FED. AID PROJECT