

STATE OF ILLINOIS  
DEPARTMENT OF TRANSPORTATION  
DIVISION OF HIGHWAYS

**PROPOSED  
HIGHWAY PLANS**

FAP ROUTE 653 (IL 18)  
SECTION (105, 106) I  
PROJECT : ACHSIP-0653(031)  
**SHOULDER WIDENING & RUMBLE STRIPS**  
LASALLE COUNTY

C-93-021-15

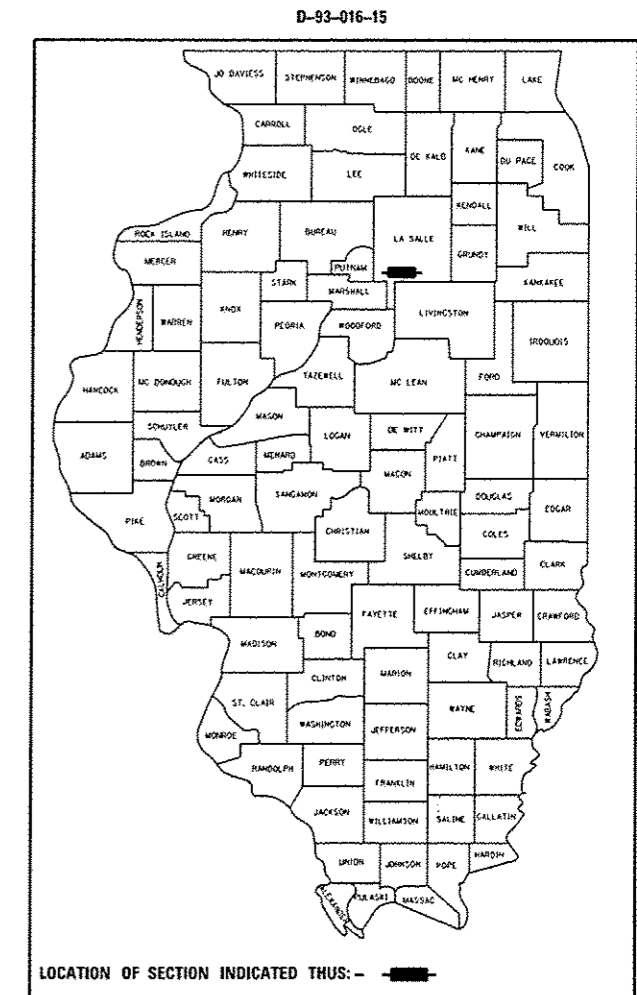
F.A.P. RTE.	SECTION	COUNTY	TOTAL SHEETS	SHEET NO.
653	(105, 106) I	LASALLE	6	1
		ILLINOIS	CONTRACT NO. 66E34	

INDEX OF SHEETS

- 1 COVER SHEET
- 2 GENERAL NOTES
- 3 SUMMARY OF QUANTITIES
- 4 TYPICAL SECTIONS
- 5 SCHEDULES
- 6 DETAILS

STANDARDS

- 000001-06 STANDARD SYMBOLS, ABBREVIATIONS AND PATTERNS
- 001006 DECIMAL OF AN INCH AND OF A FOOT
- 406201-01 MAILBOX TURNOUT
- 482001-02 HMA SHOULDER ADJACENT TO FLEXIBLE PAVEMENT
- 482006-03 HMA SHOULDER ADJACENT TO RIGID PAVEMENT
- 642006 SHOULDER RUMBLE STRIPS, 8 INCH
- 701306-03 LANE CLOSURE, 2L, 2W, SLOW MOVING OPERATIONS DAY ONLY, FOR SPEEDS ≥ 45 MPH
- 701311-03 LANE CLOSURE, 2L, 2W, MOVING OPERATIONS - DAY ONLY
- 701326-04 LANE CLOSURE, 2L, 2W, PAVEMENT WIDENING, FOR SPEEDS ≥ 45 MPH
- 701901-04 TRAFFIC CONTROL DEVICES



RURAL MINOR ARTERIAL  
2013 ADT = 2900  
P.V. = 82.6% S.U. = 7.9% M.U. = 9.5%

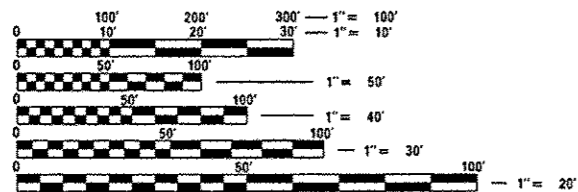
STATE OF ILLINOIS  
DEPARTMENT OF TRANSPORTATION  
DIVISION OF HIGHWAYS

SUBMITTED December 19, 2014

*Paul L. Latta, P.E.*  
DEPUTY DIRECTOR OF HIGHWAYS, REGION ENGINEER

Jan 30, 2015  
*John D. Baranzelli, P.E.*  
ENGINEER OF DESIGN AND ENVIRONMENT

Jan 30, 2015  
*Omer Osman, P.E.*  
DIRECTOR OF HIGHWAYS, CHIEF ENGINEER

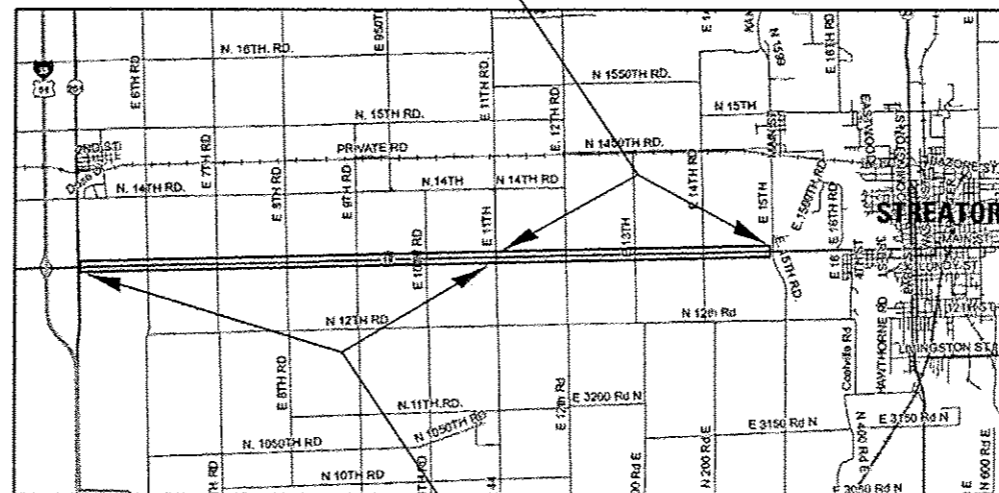


FULL SIZE PLANS HAVE BEEN PREPARED USING STANDARD ENGINEERING SCALES. REDUCED SIZED PLANS WILL NOT CONFORM TO STANDARD SCALES. IN MAKING MEASUREMENTS ON REDUCED PLANS, THE ABOVE SCALES MAY BE USED.

J.U.L.I.E.  
JOINT UTILITY LOCATION INFORMATION FOR EXCAVATION  
1-800-892-0123  
OR 811

PROJECT ENGINEER: JOE KANNEL, P.E.  
UNIT CHIEF: SCOTT FERGUSON, P.E.  
DISTRICT 3 NO. (815) 434-6131  
CONTRACT NO. 66E34

ADDITION OF RUMBLE STRIPS ONLY  
E 11TH RD (LOG MI 6.0) TO E 15TH RD (LOG MI 10.0)



SHOULDER WIDENING & RUMBLE STRIPS  
IL 251 (LOG MI 0.0) TO E 11TH RD (LOG MI 6.0)

PROJECT GROSS & NET LENGTH = 52,800 FT. = 10.0 MILES

PRINTED BY THE AUTHORITY  
OF THE STATE OF ILLINOIS

**GENERAL NOTES**

THE THICKNESS OF HMA SHOWN ON THE PLANS IS THE NOMINAL THICKNESS. DEVIATIONS FROM THE NOMINAL THICKNESS WILL BE PERMITTED WHEN SUCH DEVIATIONS OCCUR DUE TO IRREGULARITIES IN THE EXISTING SURFACE OR BASE ON WHICH THE HMA IS PLACED.

THE HMA SURFACE OF ALL MAILBOX TURNOUTS, PRIVATE ENTRANCES, COMMERCIAL ENTRANCES, AND SIDE ROADS SHALL BE MADE NEATLY, IN A WORKMANLIKE MANNER, AND SHALL ACCURATELY CONFORM TO THE SHAPES AND DIMENSIONS SHOWN ON THE PLAN DETAILS. IF REQUIRED BY THE ENGINEER, THE CONTRACTOR SHALL SAW CUT THE HMA SURFACE TO CONFORM TO THE SHAPES AND DIMENSIONS SHOWN ON THE PLAN DETAILS. THIS WORK WILL BE INCLUDED IN THE COST OF THE HMA SURFACE.

THE ENGINEER WILL BE THE SOLE JUDGE CONCERNING CURING TIME FOR THE VARIOUS HMA LIFTS.

FOR STABILIZATION, ALL TYPE III BARRICADES WILL REQUIRE A MINIMUM OF FOUR SAND BAGS PER BARRICADE.

ALL EXCAVATED MATERIAL, WHICH INCLUDES DIGGING OR GRADING OF ANY SOIL OR FILL MATERIAL, WITH THE EXCEPTION OF AGGREGATE FILLS, MUST BE INCORPORATED WITHIN THE IDOT RIGHT OF WAY DUE TO ENVIRONMENTAL DOCUMENTATION REQUIREMENTS.

ON EXISTING PAVEMENT WHICH MAY BE SUPERELEVATED, THE NEW HMA PAVEMENT SHALL BE BUILT WITH THE SAME SUPERELEVATION UNLESS NEW SUPERELEVATION RATES ARE GIVEN ON THE PLANS.

ANY REFERENCE TO A STANDARD IN THESE PLANS SHALL BE INTERPRETED TO MEAN THE EDITION AS INDICATED BY THE SUBNUMBER SHOWN IN THE LIST OF STANDARDS OR THE COPY INCLUDED IN THESE PLANS.

THE FOLLOWING RATES OF APPLICATION HAVE BEEN USED IN CALCULATING PLAN QUANTITIES:

HMA RESURFACING	112	LBS / SQ YD / IN
-----------------	-----	------------------

MEMBERS OF JULIE KNOWN TO BE WITHIN THE LIMITS OF THE IMPROVEMENT ARE:

NON-MEMBERS OF JULIE KNOWN TO BE WITHIN THE LIMITS OF THE IMPROVEMENT ARE:

THE CONTRACTOR SHALL CONTACT JULIE AT LEAST 48 HOURS PRIOR TO EXCAVATION TO DETERMINE WHICH UTILITIES ARE IN THE AREA.

**COMMITMENTS:**

STATE OF ILLINOIS  
DEPARTMENT OF TRANSPORTATION  
DISTRICT THREE

PREPARED BY: *On Beaulieu*  
DISTRICT STUDIES & PLANS ENGINEER

DATE: December 19, 2014

EXAMINED BY: *Howard J. ...*  
DISTRICT CONSTRUCTION ENGINEER

*...*  
DISTRICT MATERIALS ENGINEER

*...*  
DISTRICT OPERATIONS ENGINEER

FILE NAME *	USER NAME *	DESIGNED -	REVISED -	<b>STATE OF ILLINOIS DEPARTMENT OF TRANSPORTATION</b>	<b>GENERAL NOTES</b>				F.A.P. RTE.	SECTION	COUNTY	TOTAL SHEETS	SHEET NO.
g:\pr-work\pndot\budrynskum\02413105\03	66E24-141-details.dgn	DRAWN -	REVISED -						653	105. 1061 I	LASALLE	6	2
	PLOT SCALE * 100.0000 1/2 in.	CHECKED -	REVISED -		SCALE: SHEET OF SHEETS STA. TO STA.				CONTRACT NO. 66E34				
	PLOT DATE * 12/17/2014	DATE -	REVISED -		ILLINOIS FED. AID PROJECT								

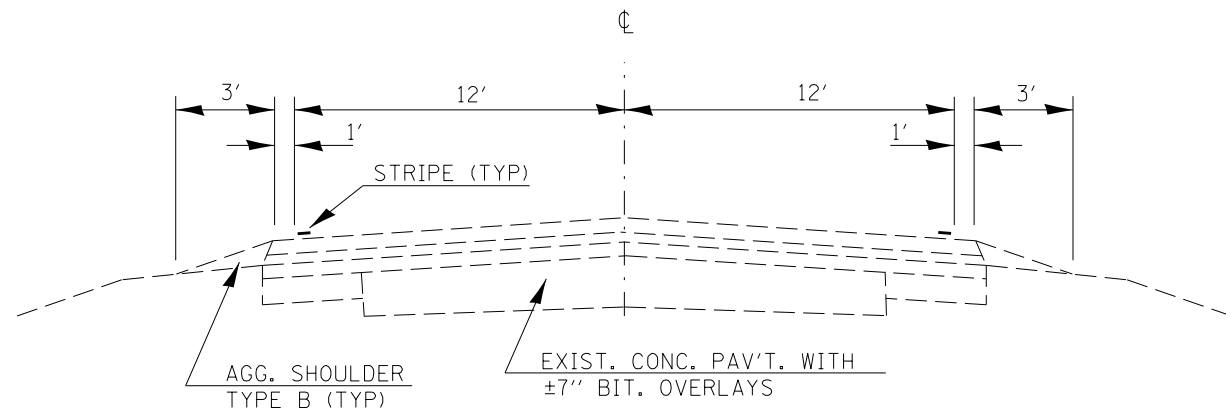
130000

CONSTR. CODE  
90% FED.  
10% STATE

CODE NO.	ITEM	UNIT	TOTAL QUANTITY	ROADWAY
				0021 RURAL
20200600	EXCAVATING AND GRADING EXISTING SHOULDER	UNIT	634	634
40600275	BITUMINOUS MATERIALS (PRIME COAT)	POUND	12834	12834
40800050	INCIDENTAL HOT-MIX ASPHALT SURFACING	TON	41.2	41.2
44000157	HOT-MIX ASPHALT SURFACE REMOVAL, 2"	SO YD	368.1	368.1
48203029	HOT-MIX ASPHALT SHOULDERS, 8"	SO YD	28160	28160
64200108	SHOULDER RUMBLE STRIPS, 8 INCH	FOOT	105600	105600
67100100	MOBILIZATION	L SUM	1.0	1.0
70100460	TRAFFIC CONTROL AND PROTECTION, STANDARD 701306	L SUM	1.0	1.0
70100500	TRAFFIC CONTROL AND PROTECTION, STANDARD 701326	L SUM	1.0	1.0
70103815	TRAFFIC CONTROL SURVEILLANCE	CAL DA	35	35
* 78001110	PAINT PAVEMENT MARKING - LINE 4"	FOOT	126720	126720
Z0030850	TEMPORARY INFORMATION SIGNING	SO FT	42	42
X0800001	SHOULDER REMOVAL (SPECIAL)	SO YD	28160	28160

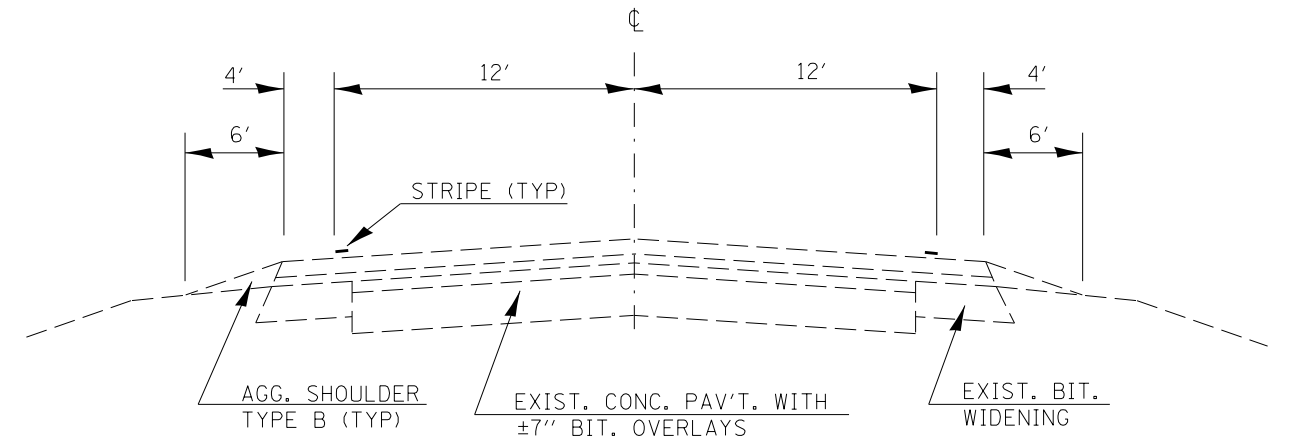
\*Specialty Items

FILE NAME *	USER NAME * budzynskm	DESIGNED -	REVISED -	<b>STATE OF ILLINOIS DEPARTMENT OF TRANSPORTATION</b>	<b>SUMMARY OF QUANTITIES</b>				F.A.P. RTE.	SECTION	COUNTY	TOTAL SHEETS	SHEET NO.	
c:\pwork\pwork\budzynskm\0813105\03	66E34-shr-detail.dgn	DRAWN -	REVISED -		SCALE:	SHEET	OF	SHEETS	STA.	TO STA.	653	(105, 106) I	LASALLE	6 3
	PLOT SCALE = 1/8" = 100'	CHECKED -	REVISED -											CONTRACT NO. 66E34
	PLOT DATE = 12/19/2014	DATE -	REVISED -											ILLINOIS FED. AID PROJECT



**EXISTING TYPICAL SECTION**

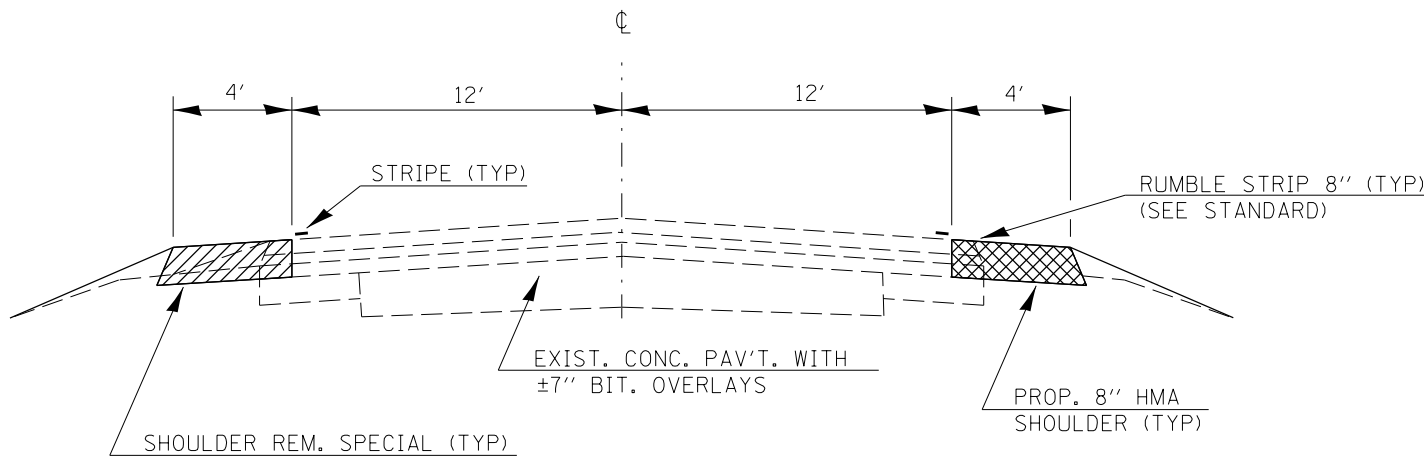
IL 251 (LM 0.0) TO E 11TH RD (LM 6.0)



**EXISTING TYPICAL SECTION**

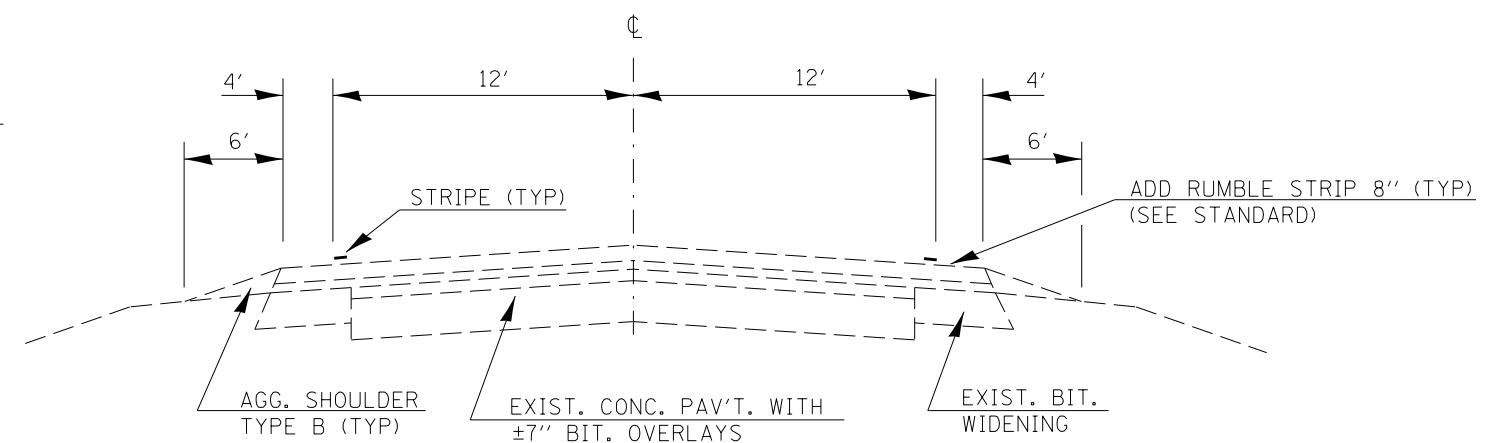
E 11TH RD (LM 6.0) TO E 15TH RD (LM 10.0)

HMA MIXTURE REQUIREMENT TABLE		
LOCATION(S):	LM 0.0 TO LM 6.0	
MIXTURE USE(S):	SHOULDER BOTTOM LIFT(S)	SHOULDER TOP LIFT (2'')
BINDER GRADE (PG):	PG 64-22	PG 64-22
DESIGN AIR VOIDS:	4.0% @ N50	4.0% @ N50
MIXTURE COMPOSITION: (MIXTURE GRADATION)	IL-19.0 FG	IL-9.5 FG
FRICTION AGGREGATE:	-	MIXTURE C
MIXTURE WEIGHT:	112.0 LB/SY/IN	112.0 LB/SY/IN
QUALITY MANAGEMENT PROGRAM:	QC/QA	QC/QA
SUBLOT SIZE:	N/A	N/A
DENSITY TEST METHOD:	CORES	% GROWTH CURVE



**PROPOSED TYPICAL SECTION**

IL 251 (LM 0.0) TO E 11TH RD (LM 6.0)



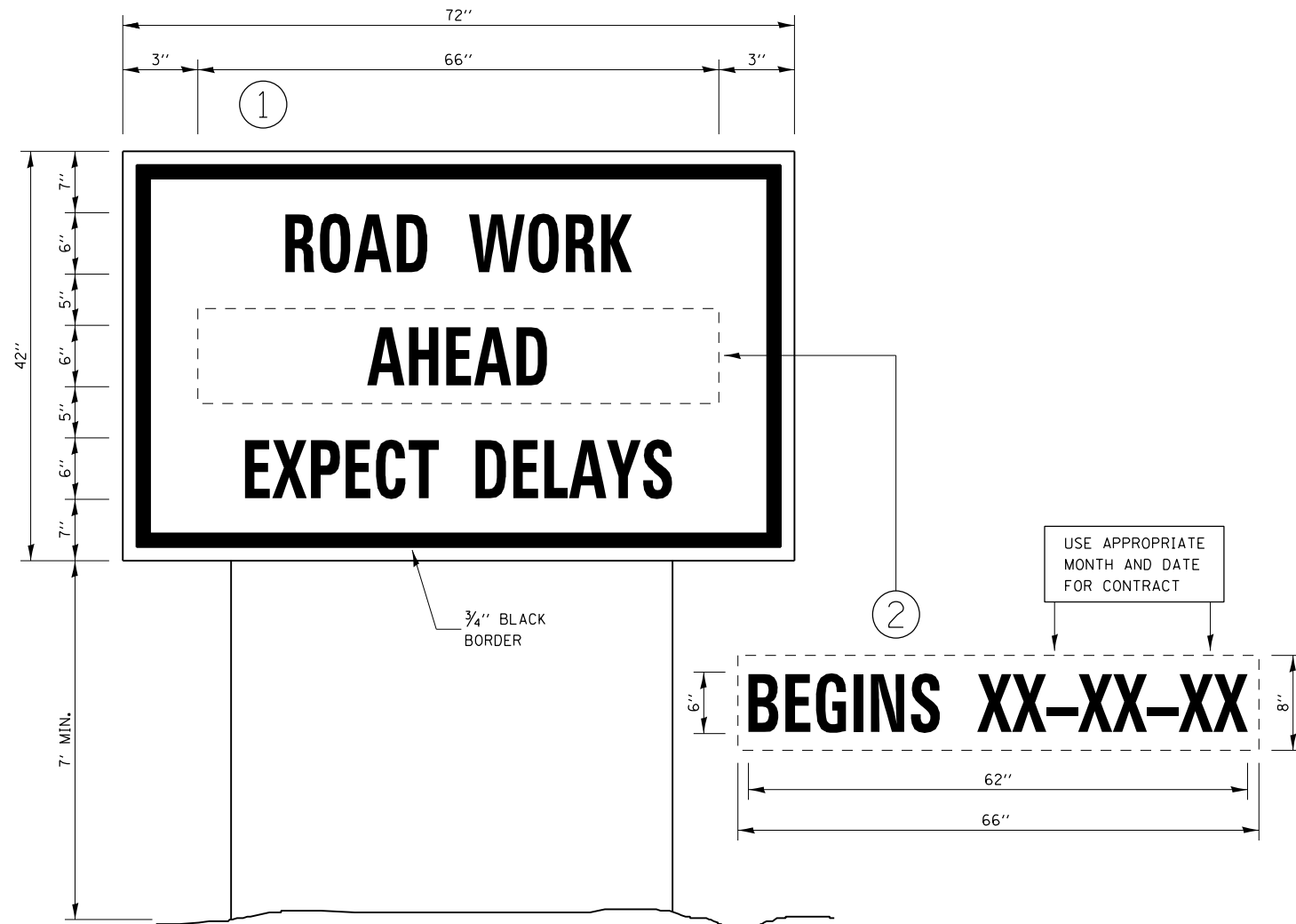
**PROPOSED TYPICAL SECTION**

E 11TH RD (LM 6.0) TO E 15TH RD (LM 10.0)

FILE NAME =	USER NAME = budzynskim	DESIGNED -	REVISED -	<b>STATE OF ILLINOIS DEPARTMENT OF TRANSPORTATION</b>	<b>TYPICAL SECTIONS</b>			F.A.P. RTE.	SECTION	COUNTY	TOTAL SHEETS	SHEET NO.	
et:\pwork\pwork\budzynskim\d0413185\0366E34-sht-details.dgn	DRAWN -	REVISED -	REVISED -					653	(105, 106) I	LASALLE	6	4	
PLOT SCALE = 100.0000' / 1in.	CHECKED -	REVISED -	REVISED -		CONTRACT NO. 66E34								
PLOT DATE = 12/17/2014	DATE -	REVISED -	REVISED -		ILLINOIS FED. AID PROJECT								
					SCALE:	SHEET	OF	SHEETS	STA.	TO	STA.		

SHOULDER REMOVAL & REPLACEMENT SCHEDULE						
LOCATION	LENGTH	SHOULDER REMOVAL (SPECIAL)	HMA SHOULDERS 8"	BIT MTLs PRIME COAT	SHOULDER RUMBLE STRIPS 8"	PAINT PVMT MARKING 4"
	MILES	SQ YD	SQ YD	POUND	FOOT	FOOT
IL 251 (LOG MI 0.0) TO E 11TH RD (LOG MI 6.0)	6.0	28160	28160	12672	63360	126720
E 11TH (LOG MI 6.0) TO E 15TH RD (LOG MI 10.0)	4.0	-	-	-	42240	-
<b>TOTAL</b>	<b>10.0</b>	<b>28160</b>	<b>28160</b>	<b>12672</b>	<b>105600</b>	<b>126720</b>

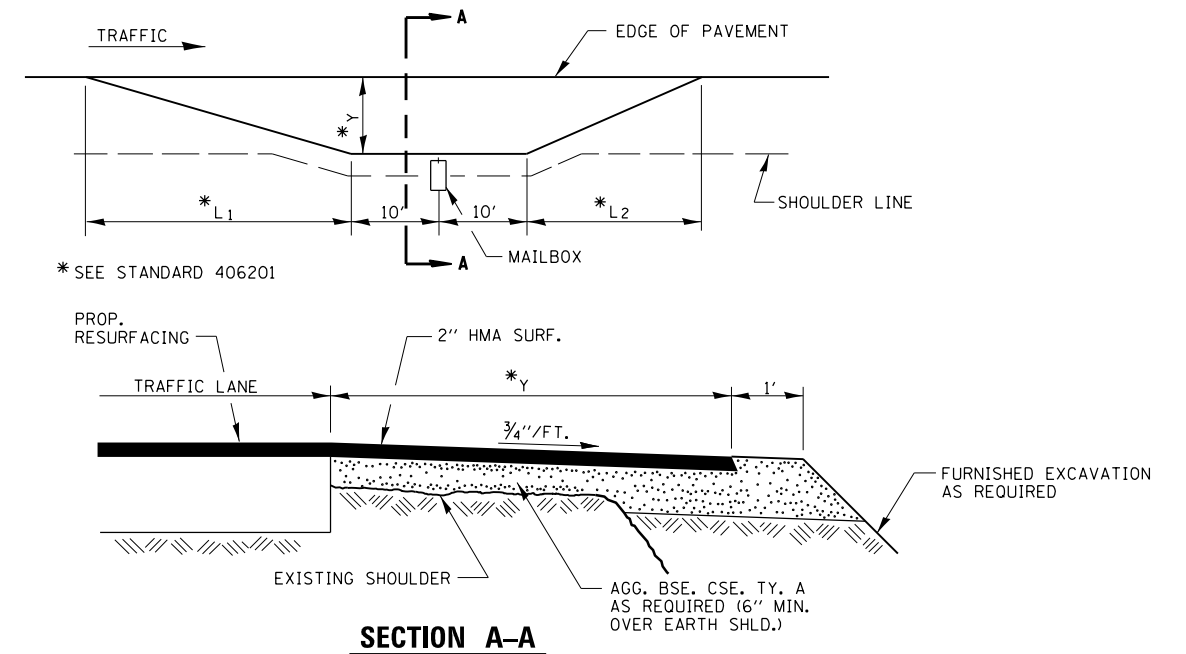
MAILBOX TURNOUT REMOVAL & REPLACEMENT SCHEDULE					
LOCATION	AREA	HMA SURF REMOVAL 2"	INCIDENTAL HMA SURF 2"	BIT MTLs PRIME COAT	
	SQ YD	SQ YD	TON	POUND	
LM 1.32 RT	40.9	40.9	4.6	18	
LM 1.81 RT	40.9	40.9	4.6	18	
LM 2.13 LT	40.9	40.9	4.6	18	
LM 2.81 LT	40.9	40.9	4.6	18	
LM 3.37 LT	40.9	40.9	4.6	18	
LM 3.52 LT	40.9	40.9	4.6	18	
LM 3.72 LT	40.9	40.9	4.6	18	
LM 4.46 LT	40.9	40.9	4.6	18	
LM 4.96 LT	40.9	40.9	4.6	18	
<b>TOTAL</b>	<b>368.1</b>	<b>368.1</b>	<b>41.2</b>	<b>162</b>	



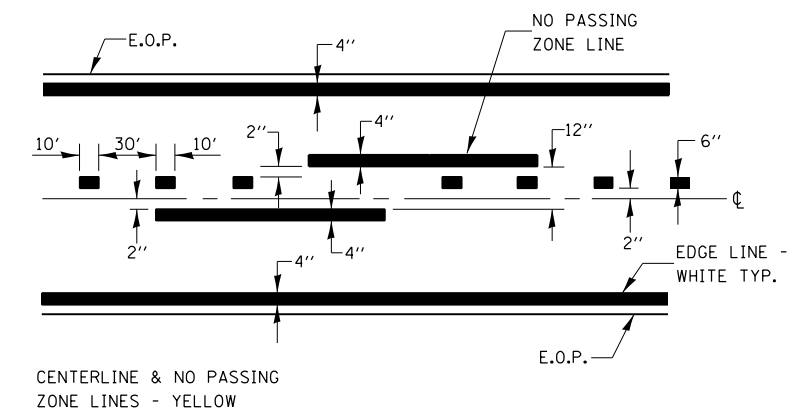
**TEMPORARY INFORMATION SIGNING**

**NOTES:**

1. USE 6" D BLACK LETTERING ON FLOURESENT ORANGE BACKGROUND.
2. ERECT SIGNS AT LOCATIONS IN ADVANCE OF THE "ROAD CONSTRUCTION AHEAD" SIGNS AS DIRECTED BY THE ENGINEER.
3. ERECT SIGN ① WITH INSTALLED PANEL ② A MINIMUM OF ONE WEEK PRIOR TO THE START OF THE LANE CLOSURE.
4. REMOVE PANEL ② ON THAT DATE.
5. SEE SPECIAL PROVISION "TEMPORARY INFORMATION SIGNING" FOR ADDITIONAL INFORMATION.
6. WILL BE PAID FOR PER SQ FT AS "TEMPORARY INFORMATION SIGNING". EACH SIGN = 21 SQ FT AND THE DATE PANEL ② WILL NOT BE MEASURED SEPARATELY FOR PAYMENT.



**SECTION A-A**  
**RURAL MAILBOX TURNOUT DETAILS**



**PAVEMENT MARKING**

FILE NAME =	USER NAME = budzynskim	DESIGNED -	REVISED -	<b>STATE OF ILLINOIS DEPARTMENT OF TRANSPORTATION</b>	<b>DETAILS</b>	F.A.P. RTE.	SECTION	COUNTY	TOTAL SHEETS	SHEET NO.
ca:\pw\work\p\dot\budzynskim\d0413185\0366E34-sht-details.dgn	DRAWN -	REVISED -	653			(105, 106) I	LASALLE	6	6	
PLOT SCALE = 100.0000' / in.	CHECKED -	REVISED -	CONTRACT NO. 66E34							
PLOT DATE = 12/17/2014	DATE -	REVISED -	ILLINOIS FED. AID PROJECT							
SCALE:						SHEET	OF	SHEETS	STA.	TO STA.