

1. COVER SHEET
2. JOB SPECIFIC NOTES & COMMITMENTS
- 3-4. SUMMARY OF QUANTITIES
5. LINE DIAGRAM
6. TYPICAL SECTIONS
7. SCHEDULE OF QUANTITIES
- 8-9. TYPICAL PAVEMENT MARKINGS STANDARD 780001 - D4

HIGHWAY STANDARDS

- 701301-04
- 701306-03
- 701311-03
- 701901-04

STATE OF ILLINOIS

DEPARTMENT OF TRANSPORTATION

DIVISION OF HIGHWAYS

**PROPOSED
HIGHWAY PLANS**

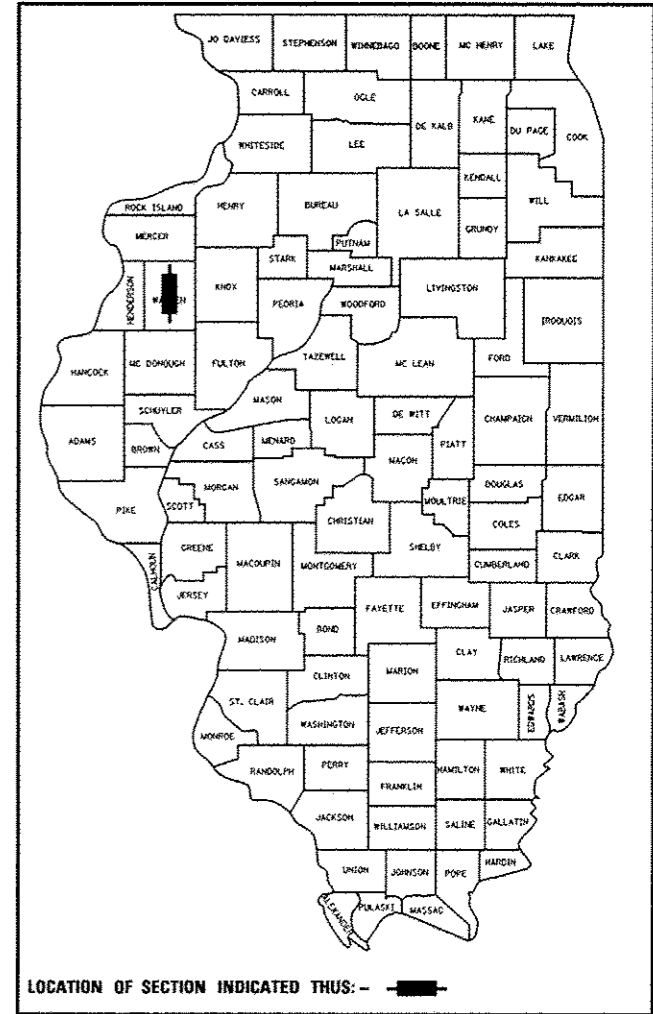
**F.A.S. ROUTE 417 (BUS 67)
SECTION 35RS-4**

**CONTRACT MAINTENANCE
WARREN COUNTY**

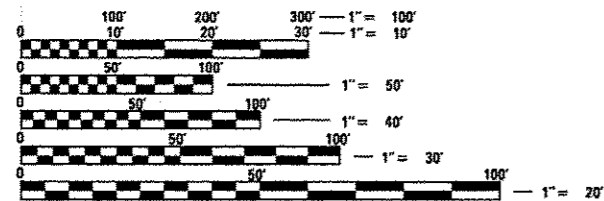
C-94-032-15

F.A.S. RTE. 417	SECTION 35RS-4	COUNTY WARREN	TOTAL SHEETS 9	SHEET NO. 1
		ILLINOIS	CONTRACT NO. 68C41	

D-94-022-15

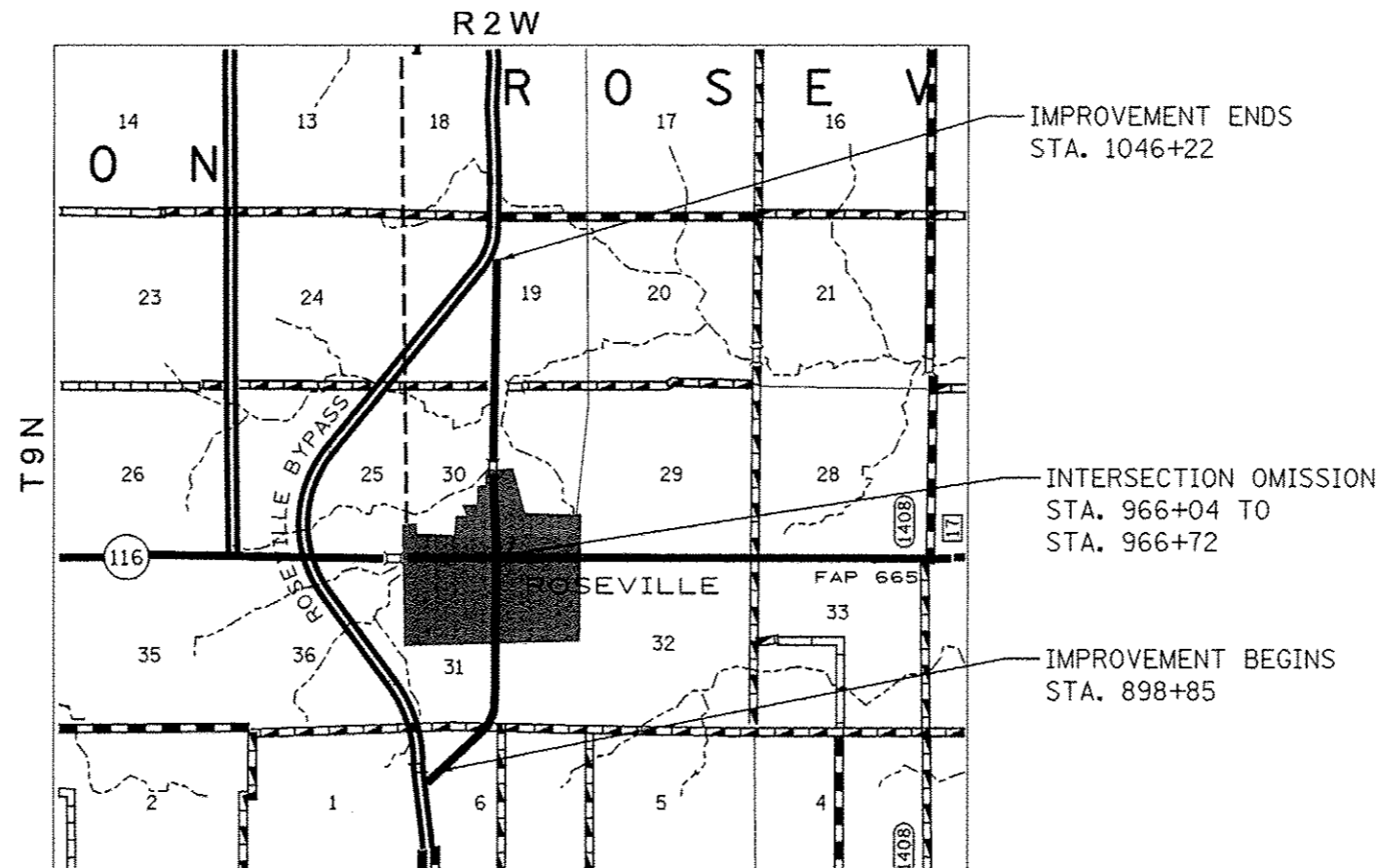


DESCRIPTION:
CAPE SEAL ON BUS 67 FROM 1.67 MILE NORTH OF ROSEVILLE TO 1.5 MILE SOUTH OF ROSEVILLE



FULL SIZE PLANS HAVE BEEN PREPARED USING STANDARD ENGINEERING SCALES. REDUCED SIZED PLANS WILL NOT CONFORM TO STANDARD SCALES. IN MAKING MEASUREMENTS ON REDUCED PLANS, THE ABOVE SCALES MAY BE USED.

J.U.L.I.E.
JOINT UTILITY LOCATION INFORMATION FOR EXCAVATION
1-800-892-0123
OR 811



PROJECT ENGINEER MIKE LEWIS (309) 671-3454
PROJECT MANAGER RAYMOND SAMARA (309) 671-3459
CATALOG NO. 035216-00D
CONTRACT NO. 68C41

GROSS LENGTH = 14,747 FT. = 2.79 MILE
NET LENGTH = 14,669 FT. = 2.78 MILE

STATE OF ILLINOIS
DEPARTMENT OF TRANSPORTATION
DIVISION OF HIGHWAYS

SUBMITTED Dec 5 20 14
Kenneth A. Samarin
DEPUTY DIRECTOR OF HIGHWAYS, REGION ENGINEER

Jan 30 20 15
John D. Baranzello
ENGINEER OF DESIGN AND ENVIRONMENT

Jan 30 20 15
Omer Osman
DIRECTOR OF HIGHWAYS, CHIEF ENGINEER

**PRINTED BY THE AUTHORITY
OF THE STATE OF ILLINOIS**

JOB SPECIFIC NOTES

NO PASSING ZONE VERIFICATION

THE RESIDENT SHALL CONTACT OPERATIONS TO VERIFY THE LOCATION OF NO PASSING ZONES PRIOR TO PLACEMENT OF CENTERLINE STRIPING.

SURFACE TESTS APPLICATION

SMOOTHNESS TESTS ON THE COMPLETED SURFACE WILL NOT BE REQUIRED; BUT THE ENGINEER RESERVES THE RIGHT TO REQUIRE CORRECTIVE MEASURES WHEN OBVIOUS SURFACE VARIATIONS ARE PRESENT.

CAPE SEAL TREATMENT

THE MATERIALS FOR THE A-1 SURFACE SHALL BE CA 20.
 THE MICRO-SURFACING APPLICATION SHALL BE SINGLE PASS, TYPE II, 24 LB./SQ. YD.
 THE AGGREGATE FOR THE MICROSURFACING SHALL MEET THE FRICTION AGGREGATE REQUIREMENTS FOR THE MIXTURE C IN ARTICLE 1004.03 (d)

EXISTING PAVEMENT MARKINGS

THE EXISTING PAVEMENT MARKINGS AND RAISED REFLECTIVE PAVEMENT MARKERS SHALL BE REMOVED PRIOR TO THE CAPE SEAL APPLICATION, THE HOLE RESULTING FROM THE REMOVAL SHALL BE FILLED WITH COLD MIXED MATERIAL (UPM). THIS WORK SHALL BE INCLUDED IN THE COST OF THE "RAISED REFLECTIVE PAVEMENT MARKER REMOVAL"

STATIONING

THE EXISTING ROADWAY STATIONS SHALL BE COVERED PRIOR TO THE CAPE SEAL APPLICATIONS. THE COVER SHALL BE REMOVED AFTER WORK IS COMPLETED. THIS WORK SHALL BE INCLUDED IN THE COST OF THE "CAPE SEAL".

COMMITMENTS:

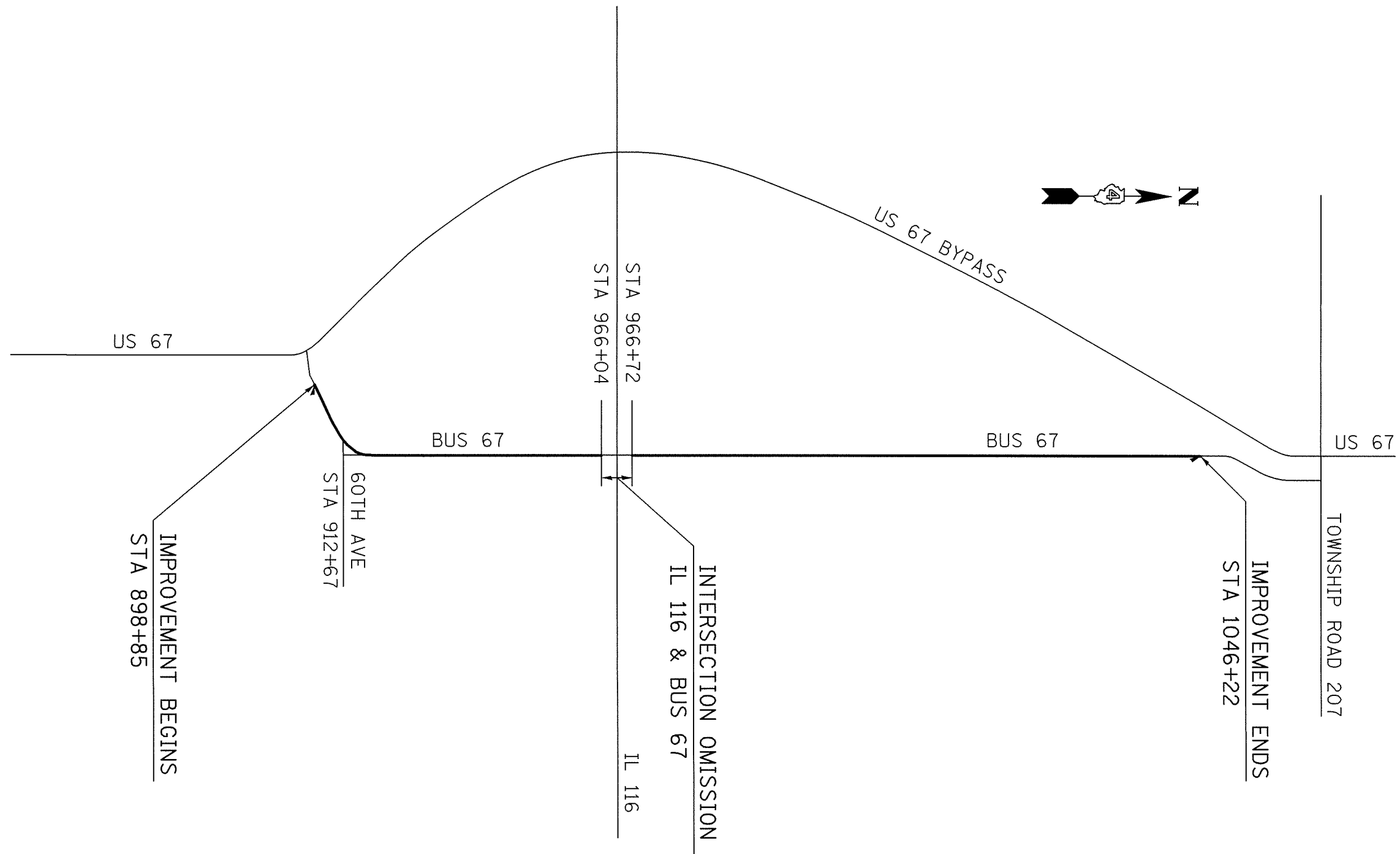
NO COMMITMENTS HAVE BEEN MADE FOR THIS PROJECT.

FILE NAME * 0468C41-topo.dgn	USER NAME = abuhanna*	DESIGNED -	REVISED -	STATE OF ILLINOIS DEPARTMENT OF TRANSPORTATION	JOB SPECIFIC NOTES & COMMITMENTS				F.A.S RTE.	SECTION	COUNTY	TOTAL SHEETS	SHEET NO.
	PLOT SCALE = 40,0000' / 1" =	DRAWN -	REVISED -						417	35RS-4	WARREN	9	2
Default	PLOT DATE = 11/19/2014	CHECKED -	REVISED -		SCALE:	SHEET 1	OF 1	SHEETS	STA.	TO STA.	CONTRACT NO. 68C41		
		DATE -	REVISED -								ILLINOIS FED. AID PROJECT		

CODE NO.	ITEM	UNIT	TOTAL QUANTITY	CONST. CODE	
				RURAL	WARREN
				100% STATE	0005
67100100	MOBILIZATION	L SUM	1		1
70100460	TRAFFIC CONTROL AND PROTECTION, STANDARD 701306	L SUM	1		1
70300100	SHORT-TERM PAVEMENT MARKING	FOOT	1474		1474
70300210	TEMPORARY PAVEMENT MARKING - LETTERS AND SYMBOLS	SQ FT	31		31
70300220	TEMPORARY PAVEMENT MARKING - LINE 4"	FOOT	36533		36533
70300240	TEMPORARY PAVEMENT MARKING - LINE 6"	FOOT	238		238
70300250	TEMPORARY PAVEMENT MARKING - LINE 8"	FOOT	102		102
70300280	TEMPORARY PAVEMENT MARKING - LINE 24"	FOOT	34		34
70301000	WORK ZONE PAVEMENT MARKING REMOVAL	SQ FT	491		491
* 78009000	MODIFIED URETHANE PAVEMENT MARKING - LETTERS AND SYMBOLS	SQ FT	31		31
* 78009004	MODIFIED URETHANE PAVEMENT MARKING - LINE 4"	FOOT	36533		36533
* 78009006	MODIFIED URETHANE PAVEMENT MARKING - LINE 6"	FOOT	238		238
* 78009008	MODIFIED URETHANE PAVEMENT MARKING - LINE 8"	FOOT	102		102
* 78009024	MODIFIED URETHANE PAVEMENT MARKING - LINE 24"	FOOT	34		34

* SPECIALTY ITEM

FILE NAME = 0468C41-topo.dgn	USER NAME = abuhanne	DESIGNED -	REVISD -	STATE OF ILLINOIS DEPARTMENT OF TRANSPORTATION	SUMMARY OF QUANTITIES	F.A.S RTE	SECTION	COUNTY	TOTAL SHEETS	SHEET NO.	
	PLOT SCALE = 40.0000' / 1"	DRAWN -	REVISD -			417	3SR5-4	WARREN	9	3	
	PLOT DATE = 11/18/2014	CHECKED -	REVISD -			CONTRACT NO. 68C41					
		DATE -	REVISD -			ILLINOIS FED. AID PROJECT					



FILE NAME = D468C41-topo.dgn Default	USER NAME = obuhannov	DESIGNED -	REVISED -	STATE OF ILLINOIS DEPARTMENT OF TRANSPORTATION	LINE DIAGRAM				F.A.S. RTE.	SECTION	COUNTY	TOTAL SHEETS	SHEET NO.
	PLOT SCALE = 40.1826' / in.	CHECKED -	REVISED -						417	35RS-4	WARREN	9	5
	PLOT DATE = 11/17/2014	DATE -	REVISED -		SCALE:	SHEET 1	OF 1	SHEETS	STA.	TO STA.	CONTRACT NO. 68C41		
											ILLINOIS FED. AID PROJECT		

LOCATION				TEMPORARY PAVEMENT MARKING - LETTERS & SYMBOLS	TEMPORARY PAVEMENT MARKING - LINE 4"	TEMPORARY PAVEMENT MARKING - LINE 6"	TEMPORARY PAVEMENT MARKING - LINE 8"	TEMPORARY PAVEMENT MARKING - LINE 24"	MODIFIED URETHANE PAVEMENT MARKING - LETTERS & SYMBOLS	MODIFIED URETHANE PAVEMENT MARKING - LINE 4"	MODIFIED URETHANE PAVEMENT MARKING - LINE 6"	MODIFIED URETHANE PAVEMENT MARKING - LINE 8"	MODIFIED URETHANE PAVEMENT MARKING - LINE 24"	PAVEMENT MARKING REMOVAL	RAISED REF PAV MARKERS REMOVAL
LT/RT	STA	TO	STA	SQ FT	FT	FT	FT	FT	SQ FT	FT	FT	FT	FT	SQFT	EACH
	899+05	-	928+00												25
WHITE EDGE LINE															
LT	898+85	-	935+40		3655					3655				1218.3	
RT	898+85	-	935+40		3655					3655				1218.3	
LT	969+92	-	1046+22		7630					7630				2543.3	
RT	969+92	-	1046+22		7630					7630				2543.3	
YELLOW (NO PASSING)															
RT	902+85	-	918+20		1535					1535				511.7	
LT	912+20	-	928+00		1580					1580				526.7	
RT	977+15	-	1004+50		2735					2735				911.7	
LT	986+60	-	1032+25		4565					4565				1521.7	
RT	1015+90	-	1022+25		635					635				211.7	
YELLOW (SKIP DASH)															
	899+05	-	912+20		328.75					329				109.6	
	918+20	-	986+60		1710					1710				570.0	
	1004+50	-	1015+90		285					285				95.0	
	1022+25	-	1045+83		589.5					590				196.5	
WHITE (RT TURN ARROW)															
LT			967+15	15.6					15.6					15.6	
LT			967+67	15.6					15.6					15.6	
WHITE (CROSSWALK)															
	965+86	-	965+92				117					117		58.5	
	966+66	-	966+72				121					121		60.5	
WHITE (RT TURN LANE)															
LT	966+80	-	967+82				102					102		68.3	
WHITE (STOP BARS)															
RT			965+90					12					12	24.0	
LT			966+80					22					22	44.0	
TOTAL				31	36533	238	102	34	31	36533	238	102	34	12464	25

CAPE SEAL					
STA	TO	STA	LENGTH	WIDTH	AREA
			FT	FT	SQ YD
898+85	-	966+04	6719	24	17917
966+72	-	1046+22	7950	24	21200
TOTAL					39117

MOBILIZATION	
LOCATION	L SUM
JOBSITE	1
TOTAL	1

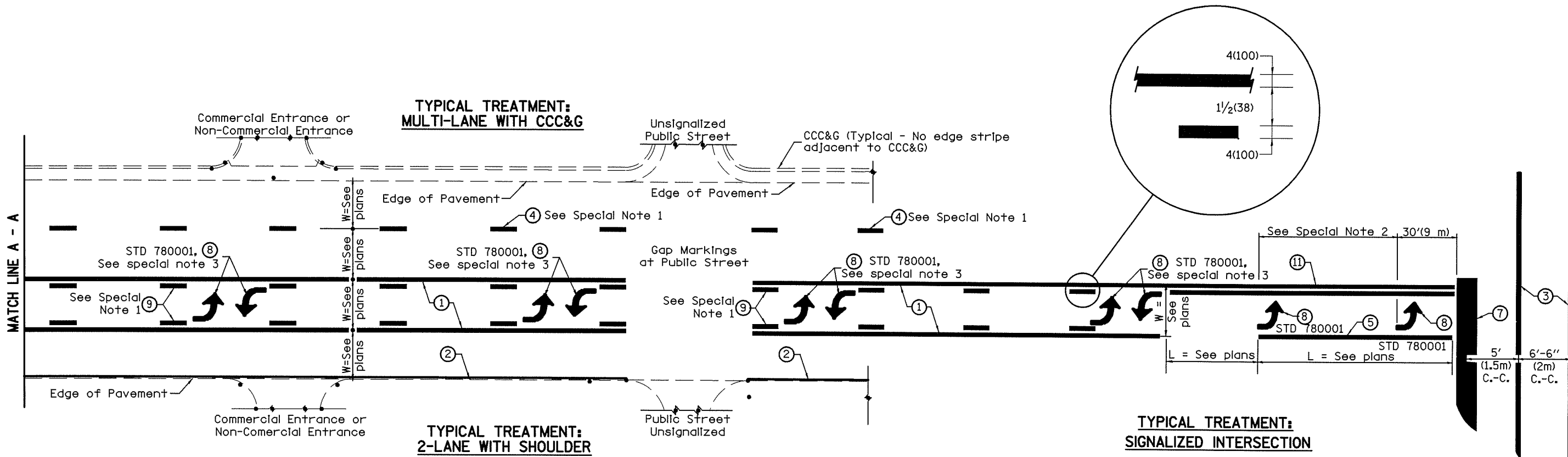
TRAFFIC CONTROL AND PROTECTION, STANDARD 701306	
LOCATION	L SUM
JOBSITE	1
TOTAL	1

SHORT TERM PAVEMENT MARKING			
STA	TO	STA	LENGTH
			FOOT
898+85	-	1046+22	1474
TOTAL			1474

WORK ZONE PAVEMENT MARKING REMOVAL				
STA	TO	STA	LENGTH	AREA
			FOOT	SQ FT
898+85	-	1046+22	1474	491
TOTAL				491

TEMPORARY RAISED PAVEMENT MARKER				
STA	TO	STA	LENGTH	EACH
898+85	-	1046+22	14737	735
TOTAL				735

DESIGNER NOTES:
1. Include State Standard 780001 (Typical Pavement Markings)



FLUSH PAVED MEDIAN: TWO-WAY LEFT TURN LANE WITH ONE-WAY LEFT TURN LANE AT SIGNALIZED INTERSECTION

TYPICAL PAVEMENT MARKING LEGEND

(Note: This is a District Standard Legend. Some elements may not apply to specific project.)

- ① 4(100) Solid (Yellow)
- ② 4(100) Solid (White)
- ③ 2-6(150) Crosswalk @ 6'-6" (2m) In C.-C. (White)
2-8(200) Crosswalk @ 6'-6" (2m) In C.-C. (White) (When traffic signals are present.)
- ④ 6(150) Skip-Dash (White) (See Special Note 1)
- ⑤ 8(200) Solid (White)
- ⑥ 12(300) Diagonal (White) (Item ⑥ is shown on Std. 780001)
- ⑦ 24(600) Stop Bar (White)
- ⑧ Letters & Arrows (See Std. 780001 and Special Notes 2 & 3)
- ⑨ 4(100) Skip-Dash (Yellow) (See Special Note 1)
- ⑩ 12(300) Diagonal (Yellow) (See Table A)
- ⑪ 4(100) Double Solid (Yellow) (See Table A)

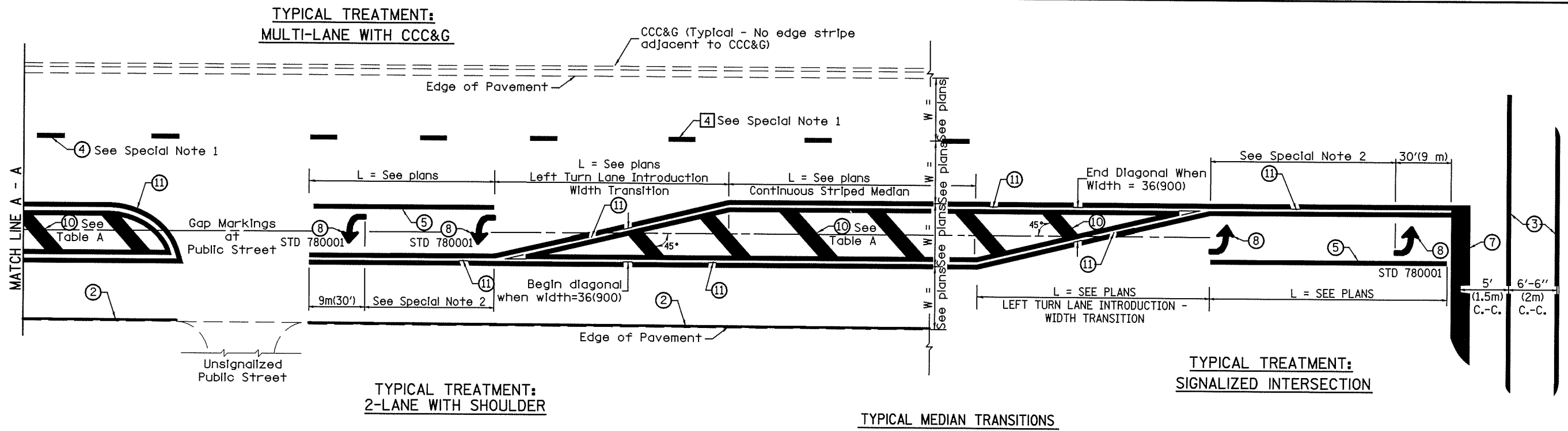
SPECIAL NOTES

1. Skip-Dash markings will be centered between both ends of city blocks and shall be placed in alignment transversely across the pavement.
2. The following shall apply to arrows located in one-way left turn lanes:
 - A. A minimum of two (2) arrows is required.
 - B. The maximum spacing between arrows is 80' (24 m).
 - C. Arrows shall be evenly spaced if three (3) or more are required.
3. The following shall apply to arrow pairs located in two-way left turn lanes:
 - A. A minimum of two (2) arrow pairs is required.
 - B. The maximum spacing between arrow pairs is 200' (61 m).
 - C. Arrow pairs shall be evenly spaced if three (3) or more are required.
 - D. The spacing between BI Directional Left Turn Arrows is 33' (10 m).

GENERAL NOTES

1. Refer to State Standard 780001 for additional Pavement Markings including letters & arrows.
2. See Plans for Pavement Markings adjacent to curbed islands and medians, and through lane reductions.

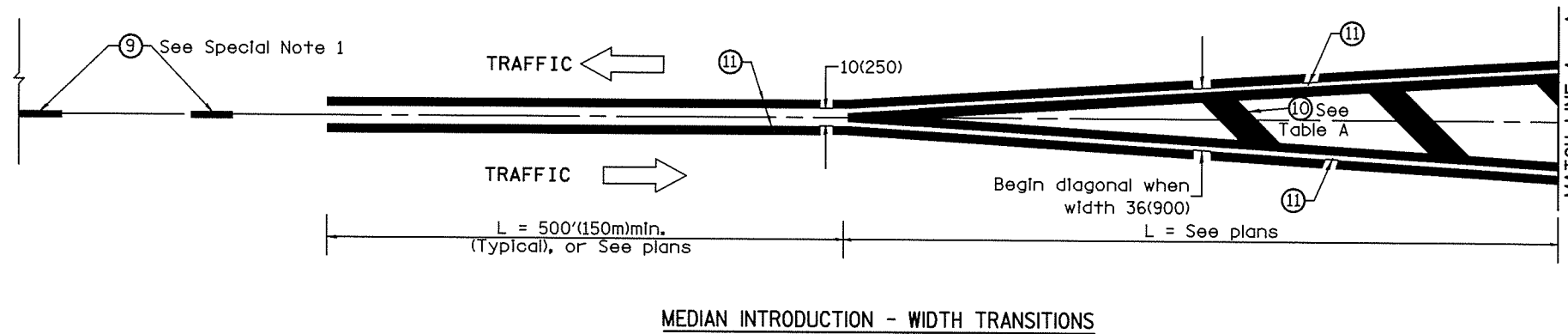
01-01-97	RENUM. F-8.03, NEW REVISION BOX	T.P.	10-16-06	REVISED TO 2007 SPEC.	STATE OF ILLINOIS DEPARTMENT OF TRANSPORTATION	TYPICAL PAVEMENT MARKINGS	F.A.S RTE. 417	SECTION 35RS-4	COUNTY WARREN	TOTAL SHEETS 9	SHEET NO. 8	
02-07-97	ADD BI DIRECTIONAL DIMENSION	J.A.					SHT. 1 OF 2					
10-97	CORRECT BI DIRECTIONAL DIMENSION	J.A.					CADD STD. 780001-D4					
08-02	ADD CROSSWALK DMNS. WITH T.S.	M.A.					NOT TO SCALE					CONTRACT NO. 68C41



FLUSH PAVED MEDIAN: RESTRICTED LEFT TURN LANE

TABLE A
RECOMMENDED SPACING BETWEEN DIAGONAL LINES

SPEED LIMIT RANGE	CONTINUOUS	INTERSECTION CHANNELIZATION
		(Includes Width Transitions for Median and Left Turn Lane Introductions)
Less Than 30 mph (50 km/h)	50' (15m)	15' (5m)
30 - 45 mph (50 - 70 km/h)	75' (23m)	20' (6m)
Over 45 mph (70 km/h)	150' (46m)	30' (9m)



All dimensions are in Inches (millimeters) unless otherwise noted.