

STATE OF ILLINOIS
DEPARTMENT OF TRANSPORTATION
DIVISION OF HIGHWAYS
PROPOSED
HIGHWAY PLANS

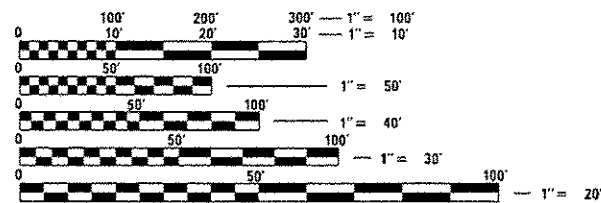
F.A.P. RTE.	SECTION	COUNTY	TOTAL SHEETS	SHEET NO.
745	(103Z) N	ADAMS	20	1
		ILLINOIS	CONTRACT NO. 72G73	

INDEX OF SHEETS

- 1 COVER SHEET
- 2 GENERAL NOTES
- 3-7 SUMMARY OF QUANTITIES
- 8 CONTROL POINT CROSS TIES
- 9 TYPICAL SECTION / SCHEDULE OF QUANTITIES
- 10-13 PLAN SHEETS
- 14-20 TRAFFIC SIGNAL DETAILS

STANDARDS

000001-06	814001-03
424006-02	814006-02
424021-03	821101-01
606001-06	862001-01
701501-06	873001-02
701701-09	877001-05
701801-05	877011-05
701901-04	878001-10
720016-03	880006-01
805001-01	780001-05



FULL SIZE PLANS HAVE BEEN PREPARED USING STANDARD ENGINEERING SCALES. REDUCED SIZED PLANS WILL NOT CONFORM TO STANDARD SCALES. IN MAKING MEASUREMENTS ON REDUCED PLANS, THE ABOVE SCALES MAY BE USED.

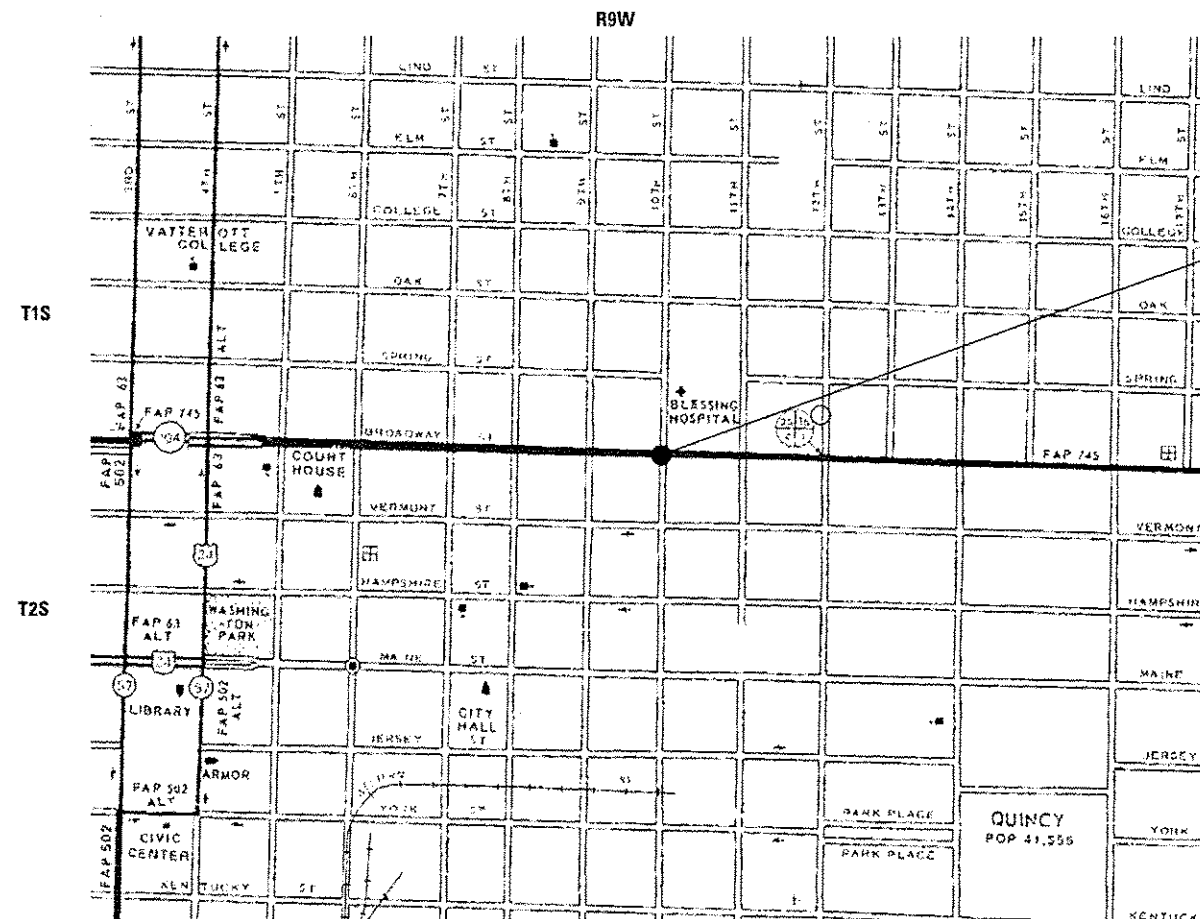
J.U.L.I.E.
 JOINT UTILITY LOCATION INFORMATION FOR EXCAVATION
 1-800-892-0123
 OR 811

PROJECT ENGINEER: SAL MADONIA (217) 782-4760
 TEAM MANAGER: JARED MARTIN (217) 524-0064

CONTRACT NO. 72G73

FAP ROUTE 745 (IL 104)
SECTION (103Z) N
PROJECT ACHSIP-0745 (311)
INTERSECTION IMPROVEMENT
ADAMS COUNTY

C-96-044-14



LOCATION MAP

GROSS LENGTH = 75 FT. = 0.014 MILE
 NET LENGTH = 75 FT. = 0.014 MILE

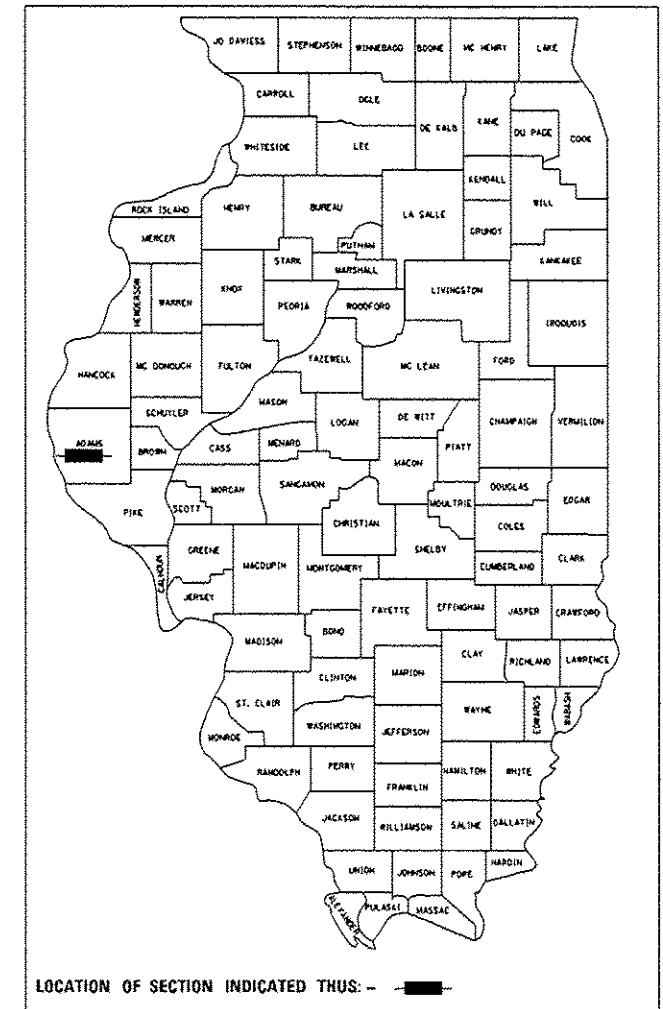
PROJECT LOCATION
 STA. 128+00



TRAFFIC COUNT

ADT = 19,000 (2013)
 PV = 18,120 (95.37%)
 SU = 751 (3.95%)
 MU = 129 (0.68%)

D-96-044-14



LOCATION OF SECTION INDICATED THUS: - [black rectangle] -

STATE OF ILLINOIS
 DEPARTMENT OF TRANSPORTATION
 DIVISION OF HIGHWAYS

SUBMITTED DECEMBER 5 2014
[Signature]
 DEPUTY DIRECTOR OF HIGHWAYS, REGION ENGINEER

JAN 30 2015
[Signature]
 ENGINEER OF DESIGN AND ENVIRONMENT

JAN 30 2015
[Signature]
 DIRECTOR OF HIGHWAYS, CHIEF ENGINEER

**PRINTED BY THE AUTHORITY
 OF THE STATE OF ILLINOIS**

GENERAL NOTES

1. ANY REFERENCE TO A STANDARD IN THESE PLANS SHALL BE INTERPRETED TO MEAN THE EDITION AS INDICATED BY THE SUB NUMBER LISTED IN THE INDEX OF SHEETS OR THE COPY OF THE STANDARD INCLUDED IN THESE PLANS.
2. IN ADDITION TO FIELD SURVEYS, PLAN DIMENSIONS AND DETAILS RELATIVE TO THE EXISTING FACILITIES HAVE BEEN TAKEN FROM EXISTING PLANS AND ARE SUBJECT TO CONSTRUCTION VARIATIONS. IT SHALL BE THE CONTRACTOR'S RESPONSIBILITY TO VERIFY SUCH DIMENSIONS AND DETAILS IN THE FIELD. SUCH VARIATIONS SHALL NOT BE A CAUSE FOR ADDITIONAL COMPENSATION DUE TO A CHANGE IN THE SCOPE OF WORK; HOWEVER, THE CONTRACTOR WILL BE PAID FOR THE QUANTITY ACTUALLY FURNISHED AT THE UNIT PRICE BID FOR THE WORK.
3. ACCESS TO ALL ENTRANCES AND SIDE ROADS SHALL BE MAINTAINED AT ALL TIMES.
4. THE CONTRACTOR SHALL BE RESPONSIBLE FOR PROTECTING UTILITY PROPERTY FROM CONSTRUCTION OPERATIONS AS OUTLINED IN ARTICLE 107.31 OF THE STANDARD SPECIFICATIONS. THE JULIE NUMBER IS 800-892-0123. A MINIMUM OF FORTY-EIGHT HOURS ADVANCE NOTICE IS REQUIRED. ANY DAMAGE TO THE UNDERGROUND FACILITIES, CAUSED BY THE CONTRACTOR SHALL BE REPAIRED TO THE SATISFACTION OF THE DEPARTMENT AT THE CONTRACTOR'S EXPENSE, INCLUDING TEMPORARY REPAIRS WHICH MAY BE REQUIRED TO KEEP THE FACILITY OPERATIONAL WHILE MATERIAL IS BEING OBTAINED TO MAKE PERMANENT REPAIRS.
5. THE LOCATIONS OF THOSE BURIED AND ABOVEGROUND UTILITIES SHOWN ARE APPROXIMATE, ARE SHOWN FOR CONTRACTOR INFORMATIONAL USE ONLY, AND ARE NOT TO BE REFERENCED FOR CONSTRUCTIONS PURPOSES. THE IMPLIED PRESENCE OR ABSENCE OF UTILITIES IS NOT TO BE CONSTRUED BY THE OWNER, ENGINEER, CONTRACTOR, OR SUBCONTRACTORS TO BE AN ACCURATE AND COMPLETE REPRESENTATION OF UTILITIES THAT MAY OR MAY NOT EXIST ON THE CONSTRUCTION SITE. BURIED AND ABOVEGROUND UTILITY LOCATION, IDENTIFICATION, AND MARKING ARE THE SOLE RESPONSIBILITY OF THE CONTRACTOR. REROUTING, DISCONNECTION, PROTECTION, ETC, OF ANY UTILITIES MUST BE COORDINATED BETWEEN THE CONTRACTOR, UTILITY COMPANY, AND OWNER. SITE SAFETY, INCLUDING THE AVOIDANCE OF HAZARDS ASSOCIATED WITH BURIED AND ABOVEGROUND UTILITIES, REMAINS THE SOLE RESPONSIBILITY OF THE CONTRACTOR.
6. ALL SAW CUTS, NECESSARY TO COMPLETE THE WORK DETAILED IN THESE PLANS, SHALL BE INCLUDED IN THE COST FOR THE VARIOUS PAY ITEMS INVOLVED. THE MINIMUM SAW CUT DEPTH IN THE PAVEMENT SHALL BE 1 1/2 " UNLESS OTHERWISE SPECIFIED IN A DETAIL SHOWN IN THE PLANS.
7. THE EXISTING ROAD SIGNS THAT INTERFERE WITH CONSTRUCTION WILL BE REMOVED OR RELOCATED AS DIRECTED BY THE ENGINEER. AFTER THE CONSTRUCTION IS COMPLETED, THE CONTRACTOR WILL REPLACE THE SIGNS AS DIRECTED BY THE ENGINEER. THIS WORK WILL NOT BE PAID SEPARATELY BUT SHALL BE CONSIDERED INCLUDED IN THE CONTRACT, AND NO COMPENSATION WILL BE ALLOWED.

COMMITMENTS

1. THE RESIDENT ENGINEER SHALL CONTACT STUDIES & PLANS CONCERNING ANY MAJOR PLAN CHANGE TO MAKE SURE NO PREVIOUS COMMITMENTS (NOT LISTED) WERE MADE AFFECTING THE DESIGN AND ALLOW AN IMPROVED DESIGN FOR FUTURE PROJECTS.

DISTRICT SIX	
EXAMINED	OCTOBER 31 ST 20 14
	<i>Alan C. W. [Signature]</i>
OPERATIONS ENGINEER	
EXAMINED	November 7 20 14
	<i>Ron Duchambeau</i>
PROJECT IMPLEMENTATION ENGINEER	
EXAMINED	November 7 20 14
	<i>Jeffrey P. Meyer</i>
PROGRAM DEVELOPMENT ENGINEER	

FILE NAME *	USER NAME * martinjk	DESIGNED -	REVISED -	STATE OF ILLINOIS DEPARTMENT OF TRANSPORTATION	GENERAL NOTES	F.A.P. RTE.	SECTION	COUNTY	TOTAL SHEETS	SHEET NO.
	c:\pwork\p\p\dat\martinjk\0372021\067273-shi-genotes.dgn	DRAWN -	REVISED -			745	(1032)N	ADAMS	20	2
Defaults	PLOT SCALE * 100.0000' / in.	CHECKED -	REVISED -	SCALE:	SHEET OF SHEETS	STA. TO STA.	ILLINOIS FED. AID PROJECT			
	PLOT DATE * Dec-03-2014 03:14:51PM	DATE -	REVISED -							

SUMMARY OF QUANTITIES				90% FEDERAL 5% STATE 5% CITY	90% FEDERAL 10% STATE
CODE NO.	ITEM	UNIT	TOTAL QUANTITY	URBAN	TRAFFIC SIGNAL
					0021
				6-00270-0000	6-00270-0100
42400100	PORTLAND CEMENT CONCRETE SIDEWALK 4 INCH	SQ FT	1335	0	1335
42400800	DETECTABLE WARNINGS	SQ FT	49	0	49
44000500	COMBINATION CURB AND GUTTER REMOVAL	FOOT	146.5	0	146.5
44000600	SIDEWALK REMOVAL	SQ FT	1241	0	1241
60603800	COMBINATION CONCRETE CURB AND GUTTER, TYPE B-6. 12	FOOT	146.5	0	146.5
* 66900200	NON-SPECIAL WASTE DISPOSAL	CU YD	15	15	0
* 66900450	SPECIAL WASTE PLANS AND REPORTS	L SUM	1	1	0
* 66900530	SOIL DISPOSAL ANALYSIS	EACH	2	2	0
67100100	MOBILIZATION	L SUM	1	1	0
70102620	TRAFFIC CONTROL AND PROTECTION, STANDARD 701501	L SUM	1	1	0
70102635	TRAFFIC CONTROL AND PROTECTION, STANDARD 701701	L SUM	1	1	0
70102640	TRAFFIC CONTROL AND PROTECTION, STANDARD 701801	L SUM	1	0	1
70103815	TRAFFIC CONTROL SURVEILLANCE	CAL DA	4	0	4
* 72000200	SIGN PANEL - TYPE 2	SQ FT	53.4	53.4	0

* SPECIALTY ITEM

* 14

FILE NAME =	USER NAME = sparksg	DESIGNED -	REVISED -	STATE OF ILLINOIS DEPARTMENT OF TRANSPORTATION	SUMMARY OF QUANTITIES				F.A.P. RTE.	SECTION	COUNTY	TOTAL SHEETS	SHEET NO.		
pm\11084EB10INTEG.illinois.gov\PI\DOT\Documents\DOT Offices\District 6\Projects\0672073\0672073-000.dwg	PROJECT = 0672073-000	CHECKED -	REVISED -		SCALE:	SHEET	OF	SHEETS	STA.	TO STA.	745	11032N	ADAMS	20	3
Default	PLOT SCALE = 100,0000' / in.	DATE -	REVISED -		CONTRACT NO. 72073										
	PLOT DATE = 12/5/2014	DATE -	REVISED -		ILLINOIS FED. AID PROJECT										

SUMMARY OF QUANTITIES				90% FEDERAL 5% STATE 5% CITY	90% FEDERAL 10% STATE
CODE NO.	ITEM	UNIT	TOTAL QUANTITY	URBAN	
				TRAFFIC SIGNAL 0021	ROADWAY 0021
				6-00270-0000	6-00270-0100
* 78000400	THERMOPLASTIC PAVEMENT MARKING - LINE 6"	FOOT	425	425	0
* 78000650	THERMOPLASTIC PAVEMENT MARKING - LINE 24"	FOOT	104	104	0
78300100	PAVEMENT MARKING REMOVAL	50 FT	211	211	0
81028350	UNDERGROUND CONDUIT, PVC, 2" DIA.	FOOT	26	26	0
81028360	UNDERGROUND CONDUIT, PVC, 2 1/2" DIA.	FOOT	34	34	0
81028370	UNDERGROUND CONDUIT, PVC, 3" DIA.	FOOT	39	39	0
81028390	UNDERGROUND CONDUIT, PVC, 4" DIA.	FOOT	238	238	0
81400100	HANDHOLE	EACH	3	3	0
81400300	DOUBLE HANDHOLE	EACH	1	1	0
81500130	GULFBOX JUNCTION REMOVAL	EACH	1	1	0
81702110	ELECTRIC CABLE IN CONDUIT, 600V (XLP-TYPE USE) 1/C NO. 10	FOOT	363	363	0
82104250	LUMINAIRE, SODIUM VAPOR, MULTI-MOUNT, PHOTO-CELL CONTROL, 250 WATT	EACH	4	4	0
84200500	REMOVAL OF LIGHTING UNIT, SALVAGE	EACH	1	1	0
84200804	REMOVAL OF POLE FOUNDATION	EACH	1	1	0

* SPECIALTY ITEM

SUMMARY OF QUANTITIES				90% FEDERAL 5% STATE 5% CITY	90% FEDERAL 10% STATE
CODE NO.	ITEM	UNIT	TOTAL QUANTITY	URBAN	
				TRAFFIC SIGNAL 0021 6-00270-0000	ROADWAY 0021 6-00270-0100
85700200	FULL-ACTUATED CONTROLLER AND TYPE IV CABINET	EACH	1	1	0
86200200	UNINTERRUPTABLE POWER SUPPLY, STANDARD	EACH	1	1	0
86400100	TRANSCEIVER - FIBER OPTIC	EACH	3	3	0
87100140	FIBER OPTIC CABLE IN CONDUIT, NO. 62.5/125, 12F	FOOT	2201	2201	0
87301245	ELECTRIC CABLE IN CONDUIT, SIGNAL NO. 14 5C	FOOT	1607	1607	0
87301255	ELECTRIC CABLE IN CONDUIT, SIGNAL NO. 14 7C	FOOT	676	676	0
87301265	ELECTRIC CABLE IN CONDUIT, SIGNAL NO. 14 9C	FOOT	331	331	0
87301705	ELECTRIC CABLE IN CONDUIT, COMMUNICATION NO. 18 3 PAIR	FOOT	770	770	0
87301805	ELECTRIC CABLE IN CONDUIT, SERVICE, NO. 6 2 C	FOOT	65	65	0
87301900	ELECTRIC CABLE IN CONDUIT, EQUIPMENT GROUNDING CONDUCTOR, NO. 6 1C	FOOT	337	337	0
87502680	TRAFFIC SIGNAL POST, ALUMINUM 14 FT.	EACH	2	2	0
87700170	STEEL MAST ARM ASSEMBLY AND POLE, 26 FT.	EACH	2	2	0
87702910	STEEL COMBINATION MAST ARM ASSEMBLY AND POLE 36 FT.	EACH	1	1	0
87702930	STEEL COMBINATION MAST ARM ASSEMBLY AND POLE 40 FT.	EACH	1	1	0

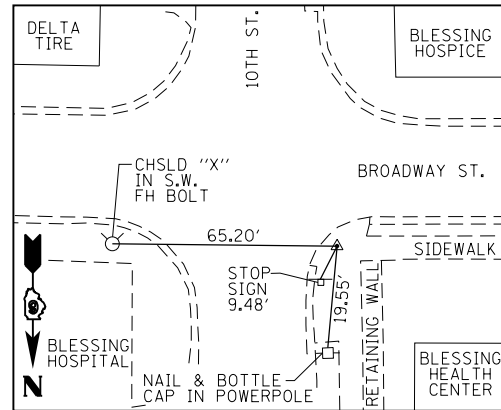
SUMMARY OF QUANTITIES				90% FEDERAL 5% STATE 5% CITY	90% FEDERAL 10% STATE
CODE NO.	ITEM	UNIT	TOTAL QUANTITY	URBAN	
				TRAFFIC SIGNAL 0021 6-00270-0000	ROADWAY 0021 6-00270-0100
87800100	CONCRETE FOUNDATION, TYPE A	FOOT	6	6	0
87800150	CONCRETE FOUNDATION, TYPE C	FOOT	3.5	3.5	0
87800400	CONCRETE FOUNDATION, TYPE E 30-INCH DIAMETER	FOOT	33.5	33.5	0
87800415	CONCRETE FOUNDATION, TYPE E 36-INCH DIAMETER	FOOT	13	13	0
88040090	SIGNAL HEAD, POLYCARBONATE, LED, 1-FACE, 3-SECTION, MAST ARM MOUNTED	EACH	4	4	0
88040160	SIGNAL HEAD, POLYCARBONATE, LED, 1-FACE, 5-SECTION, MAST ARM MOUNTED	EACH	2	2	0
88040230	SIGNAL HEAD, POLYCARBONATE, LED, 2-FACE, 3-SECTION, BRACKET MOUNTED	EACH	2	2	0
88040260	SIGNAL HEAD, POLYCARBONATE, LED, 2-FACE, 1-3-SECTION, 1-5-SECTION, BRACKET MOUNTED	EACH	2	2	0
88102845	PEDESTRIAN SIGNAL HEAD, POLYCARBONATE, LED, 2-FACE, BRACKET MOUNTED WITH COUNT DOWN TIMER	EACH	4	4	0
88200510	TRAFFIC SIGNAL BACKPLATE, RETROREFLECTIVE	EACH	14	14	0
88700090	CONFIRMATION BEACON	EACH	2	2	0
89502300	REMOVE ELECTRIC CABLE FROM CONDUIT	FOOT	1957	1957	0
89502350	REMOVE AND REINSTALL ELECTRIC CABLE FROM CONDUIT	FOOT	405	405	0
X0320837	EMERGENCY VEHICLE PRIORITY SYSTEM DUEL DETECTOR UNIT	EACH	1	1	0

FILE NAME :	USER NAME : sparkage	DESIGNED -	REVISED -	STATE OF ILLINOIS DEPARTMENT OF TRANSPORTATION	SUMMARY OF QUANTITIES			F.A.P. RTE.	SECTION	COUNTY	TOTAL SHEETS	SHEET NO.	
p:\11084848\INTEC\Illinois.gov\1007\Documents\1007 Offices\District 6\Projects\0670\BAYRD\GAD\shp\0672073-sh1-500.dwg		CHECKED -	REVISED -		SCALE:	SHEET	OF	SHEETS	STA.	TO STA.	ADAMS	20	6
		DATE -	REVISED -								CONTRACT NO.	72073	
Default											ILLINOIS	FED. AID PROJECT	

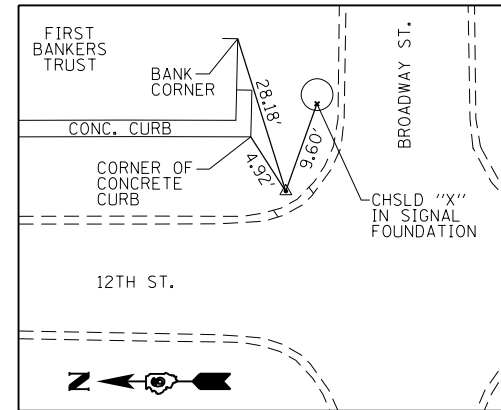
06180390

SUMMARY OF QUANTITIES				90% FEDERAL 5% STATE 5% CITY	90% FEDERAL 10% STATE
CODE NO.	ITEM	UNIT	TOTAL QUANTITY	URBAN	
				TRAFFIC SIGNAL 0021 6-00270-0000	ROADWAY 0021 6-00270-0100
X8050125	SERVICE INSTALLATION, TYPE B (MODIFIED)	EACH	1	1	0
X8730250	ELECTRIC CABLE IN CONDUIT NO. 20 3/C, TWISTED, SHIELDED	FOOT	875	875	0
X8760200	ACCESSIBLE PEDESTRIAN SIGNALS	EACH	8	8	0
Z0010688	CAMERA MOUNTING ASSEMBLY	EACH	4	4	0
Z0033072	VIDEO VEHICLE DETECTION SYSTEM	EACH	1	1	0

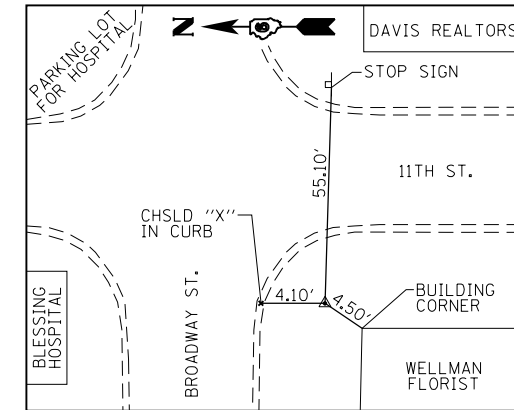
5



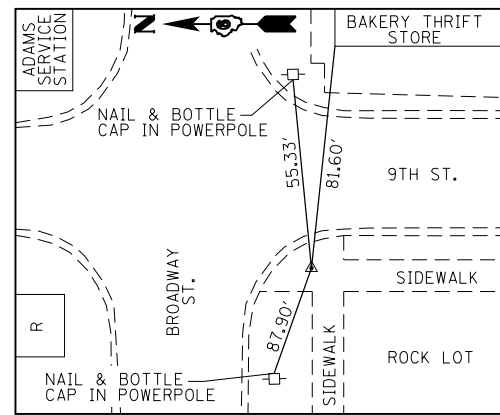
#98 STAR DRILL IN CHISLED "X"



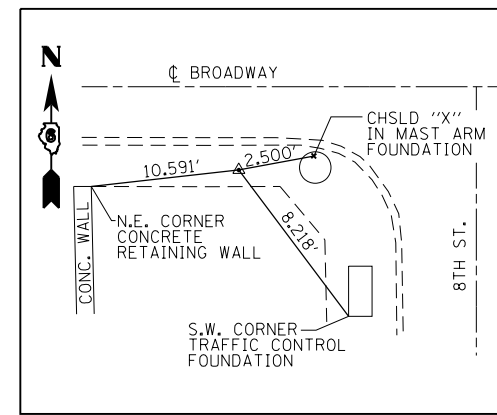
#105 STAR DRILL IN CHISLED "X"



#106 STAR DRILL IN CHISLED "X"



#107 STAR DRILL IN CHISLED "X"



#9903 STAR DRILL IN CHISLED "X"

CONTROL POINTS		
POINT	NORTHING	EASTING
98	1,192,849.063	1,950,705.106
105	1,192,819.851	1,951,740.081
106	1,192,769.470	1,951,176.834
107	1,192,794.824	1,950,239.191
9903	1,192,805.807	1,949,755.871

FILE NAME =	USER NAME = sparksgw	DESIGNED -	REVISED -
pw:\IL\084EBID\INTEG\illinois.gov\PIWIDOT\Documents\IDOT Offices\District 6\Projects\0672\DRAWING\DATA\AD\Sheets\0672G73-sht-ATB.dwg		CHECKED -	REVISED -
Default	PLOT DATE = 12/5/2014	DATE -	REVISED -

**STATE OF ILLINOIS
DEPARTMENT OF TRANSPORTATION**

CONTROL POINT CROSS TIES

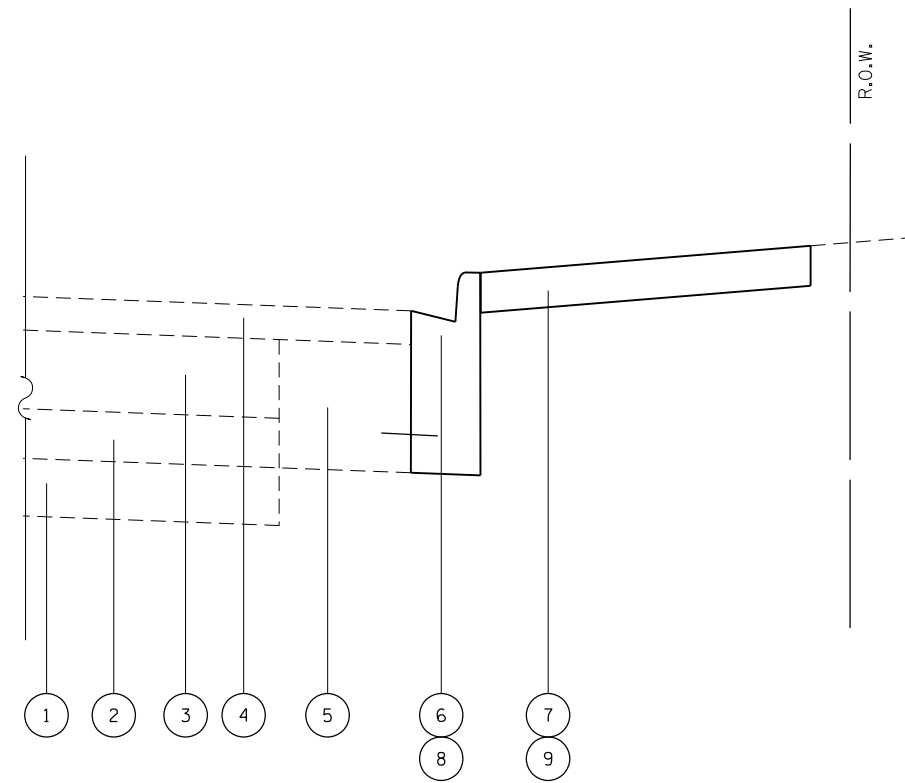
SCALE: SHEET OF SHEETS STA. TO STA.

F.A.P. RTE.	SECTION	COUNTY	TOTAL SHEETS	SHEET NO.
745	(103Z)N	ADAMS	20	8
CONTRACT NO. 72G73			ILLINOIS FED. AID PROJECT	

CURB AND GUTTER SCHEDULE		
LOCATION FAP 745 IL 104 (10th & BROADWAY)	COMBINATION CURB AND GUTTER REMOVAL (FT)	COMBINATION CURB AND GUTTER TYPE B-6.12 (FT)
NW QUADRANT	22.8	22.8
NE QUADRANT	46.4	46.4
SW QUADRANT	44.6	44.6
SE QUADRANT	32.7	32.7
TOTAL	146.5	146.5

SIDEWALK SCHEDULE			
LOCATION FAP 745 IL 104 (10th & BROADWAY)	PCC SIDEWALK REMOVAL (SQ FT)	PCC SIDEWALK 4 INCH (SQ FT)	DETECTABLE WARNING (SQ FT)
(AREAS FLOODED IN CAD)			
NW QUADRANT	176.2	206.9	22.7
NE QUADRANT	265.9	329.4	9.3
SW QUADRANT	576.0	576.0	8.2
SE QUADRANT	222.3	222.3	8.3
TOTAL	1240.4	1334.6	48.5

PAVEMENT MARKING SCHEDULE			
LOCATION FAP 745 IL 104 (10th & BROADWAY)	PAVEMENT MARKING REMOVAL (SQ FT)	THERMOPLASTIC PAVEMENT MARKING LINE - 6" (FT)	THERMOPLASTIC PAVEMENT MARKING LINE - 24" (FT)
10TH ST. (NORTH)	45.9	96.2	18.0
BROADWAY (EAST)	60.1	117.0	34.0
10TH ST. (SOUTH)	45.0	93.1	34.0
BROADWAY (WEST)	59.4	118.3	18.0
TOTAL	210.4	424.6	104.0



BROADWAY ST. & 10TH ST. INTERSECTION

LEGEND

- ① EXISTING CRUSHED STONE BASE COURSE (7")
- ② EXISTING PCC PAVEMENT (6")
- ③ EXISTING BITUMINOUS SURFACE OVERLAY (±6")
- ④ EXISTING BITUMINOUS SURFACE COURSE (2")
- ⑤ EXISTING PCC BASE COURSE WIDENING (10")
- ⑥ EXISTING COMBINATION CONCRETE CURB & GUTTER TY B-6.12
- ⑦ EXISTING PCC SIDEWALK
- ⑧ PROPOSED COMBINATION CURB & GUTTER TY B-6.12 REMOVAL & REPLACEMENT
- ⑨ PROPOSED PCC SIDEWALK REMOVAL & REPLACEMENT

PARCEL 6083104
THE BLESSING FOUNDATION, INC.,
AN ILLINOIS NOT FOR PROFIT CORPORATION

BLESSING HEALTH CENTER

127+77.12
60.63' LT.
(EX. R.O.W.)

PR R.O.W.

127+59.19
37.89' LT.
(EX. R.O.W.)

PARCEL 6083105
BLESSING HOSPITAL,
A NOT FOR PROFIT CORPORATION

BLESSING HOSPITAL

128+43.16
58.63' LT.
(EX. R.O.W.)

PR R.O.W.

128+69.41
45.35' LT.

128+69.41
37.87' LT.
(EX. R.O.W.)

127

FAP 745

IL 104/BROADWAY ST.

128

10+00

POT STA 10+00.00

129

FAP 745

IL 104/BROADWAY ST.

BLESSING HOSPICE

128+59.31
38.11' RT.
(EX. R.O.W.)

TEMP. EASEMENT

128+45.63
57.74' RT.
(EX. R.O.W.)

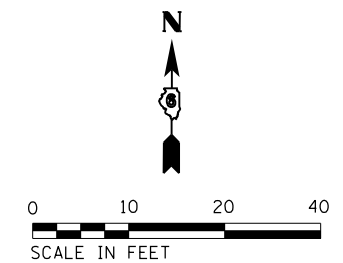
DELTA TIRE

PARCEL 6083103 TE

QUINSIPPI PROPERTIES, INC.,
AN ILLINOIS CORPORATION

MUN 5100
N. 10TH ST.

MUN 5100
N. 10TH ST.



FILE NAME =	USER NAME = martinjk	DESIGNED -	REVISED -
c:\pwork\pwork\martinjk\d0372021\0672073-sht-plan.dgn		DRAWN -	REVISED -
Default	PLOT SCALE = 20.0000' / in.	CHECKED -	REVISED -
	PLOT DATE = Jan-07-2015 09:58:49AM	DATE -	REVISED -

STATE OF ILLINOIS
DEPARTMENT OF TRANSPORTATION

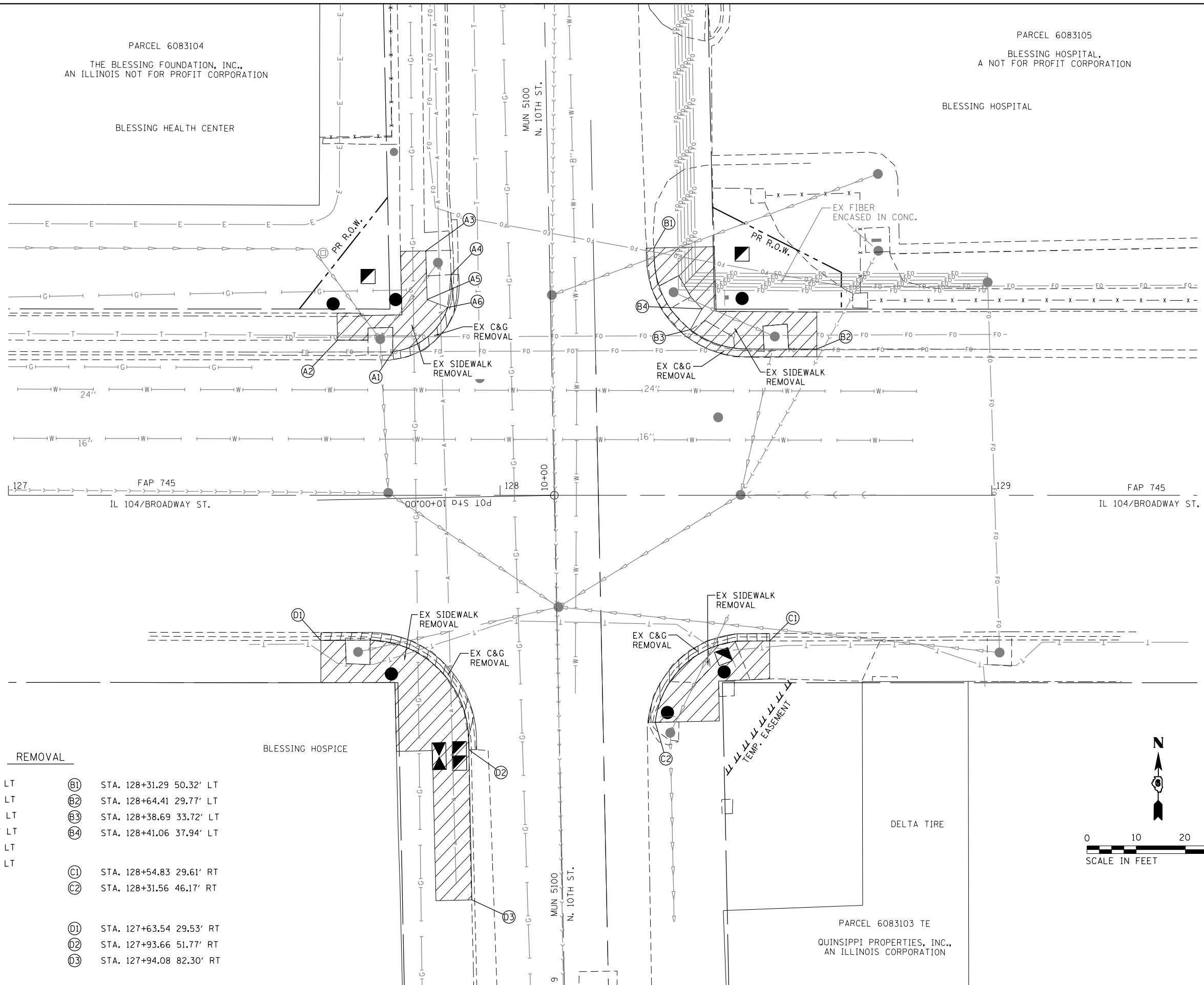
PROPOSED R.O.W.
IL 104 (BROADWAY ST) & 10TH ST

SCALE: SHEET OF SHEETS STA. TO STA.

F.A.P. RTE.	SECTION	COUNTY	TOTAL SHEETS	SHEET NO.
745	(103Z)N	ADAMS	20	10
CONTRACT NO. 72G73			ILLINOIS FED. AID PROJECT	

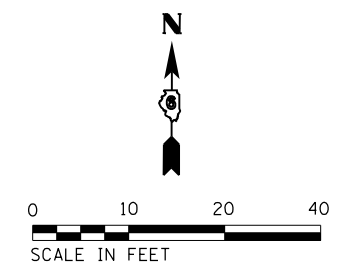
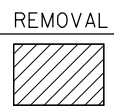
PARCEL 6083104
THE BLESSING FOUNDATION, INC.,
AN ILLINOIS NOT FOR PROFIT CORPORATION

PARCEL 6083105
BLESSING HOSPITAL,
A NOT FOR PROFIT CORPORATION

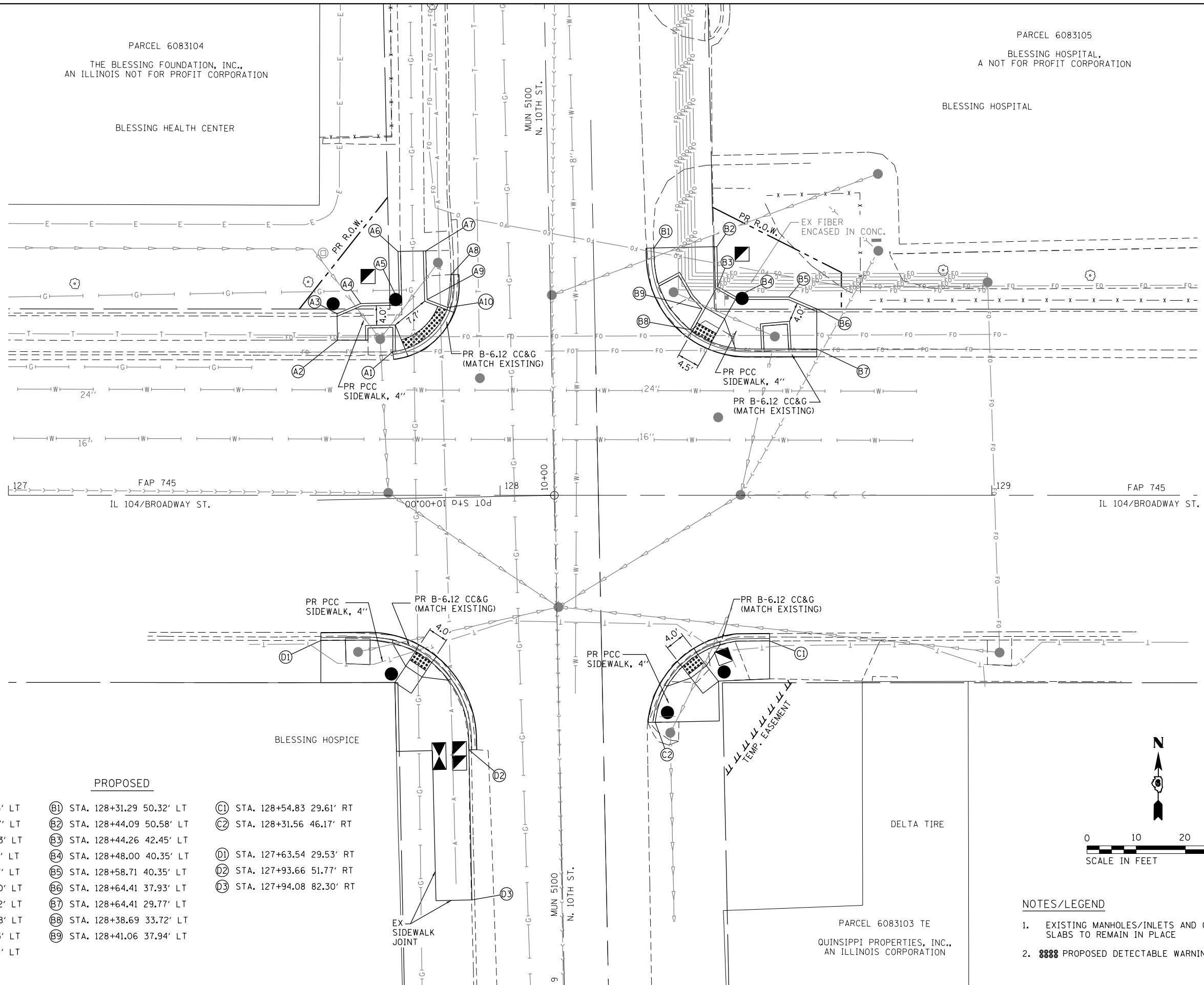


REMOVAL

- | | |
|-------------------------------|-------------------------------|
| (A1) STA. 127+78.18 29.23' LT | (B1) STA. 128+31.29 50.32' LT |
| (A2) STA. 127+66.95 31.57' LT | (B2) STA. 128+64.41 29.77' LT |
| (A3) STA. 127+84.90 49.72' LT | (B3) STA. 128+38.69 33.72' LT |
| (A4) STA. 127+90.03 44.88' LT | (B4) STA. 128+41.06 37.94' LT |
| (A5) STA. 127+85.16 39.83' LT | (C1) STA. 128+54.83 29.61' RT |
| (A6) STA. 127+89.37 38.21' LT | (C2) STA. 128+31.56 46.17' RT |
| | (D1) STA. 127+63.54 29.53' RT |
| | (D2) STA. 127+93.66 51.77' RT |
| | (D3) STA. 127+94.08 82.30' RT |



FILE NAME = c:\pw\work\p\dot\martinjk\d0372021\0672073-sht-plan.dgn	USER NAME = martinjk	DESIGNED -	REVISED -	STATE OF ILLINOIS DEPARTMENT OF TRANSPORTATION	REMOVAL ITEMS IL 104 (BROADWAY ST) & 10TH ST	F.A.P. RTE. 745	SECTION (1032)N	COUNTY ADAMS	TOTAL SHEETS 20	SHEET NO. 11		
Default	PLOT SCALE = 20.0000' / in.	CHECKED -	REVISED -			SCALE:	SHEET OF SHEETS	STA. TO STA.	CONTRACT NO. 72G73			
	PLOT DATE = Jan-07-2015 09:58:50AM	DATE -	REVISED -			ILLINOIS FED. AID PROJECT						



PROPOSED

- | | | |
|--------------------------------|-------------------------------|-------------------------------|
| (A1) STA. 127+78.18 29.23' LT | (B1) STA. 128+31.29 50.32' LT | (C1) STA. 128+54.83 29.61' RT |
| (A2) STA. 127+66.95 31.57' LT | (B2) STA. 128+44.09 50.58' LT | (C2) STA. 128+31.56 46.17' RT |
| (A3) STA. 127+66.84 36.93' LT | (B3) STA. 128+44.26 42.45' LT | (D1) STA. 127+63.54 29.53' RT |
| (A4) STA. 127+71.65 39.01' LT | (B4) STA. 128+48.00 40.35' LT | (D2) STA. 127+93.66 51.77' RT |
| (A5) STA. 127+79.52 39.17' LT | (B5) STA. 128+58.71 40.35' LT | (D3) STA. 127+94.08 82.30' RT |
| (A6) STA. 127+79.25 49.60' LT | (B6) STA. 128+64.41 37.93' LT | |
| (A7) STA. 127+84.90 49.72' LT | (B7) STA. 128+64.41 29.77' LT | |
| (A8) STA. 127+90.03 44.88' LT | (B8) STA. 128+38.69 33.72' LT | |
| (A9) STA. 127+85.16 39.83' LT | (B9) STA. 128+41.06 37.94' LT | |
| (A10) STA. 127+89.37 38.21' LT | | |

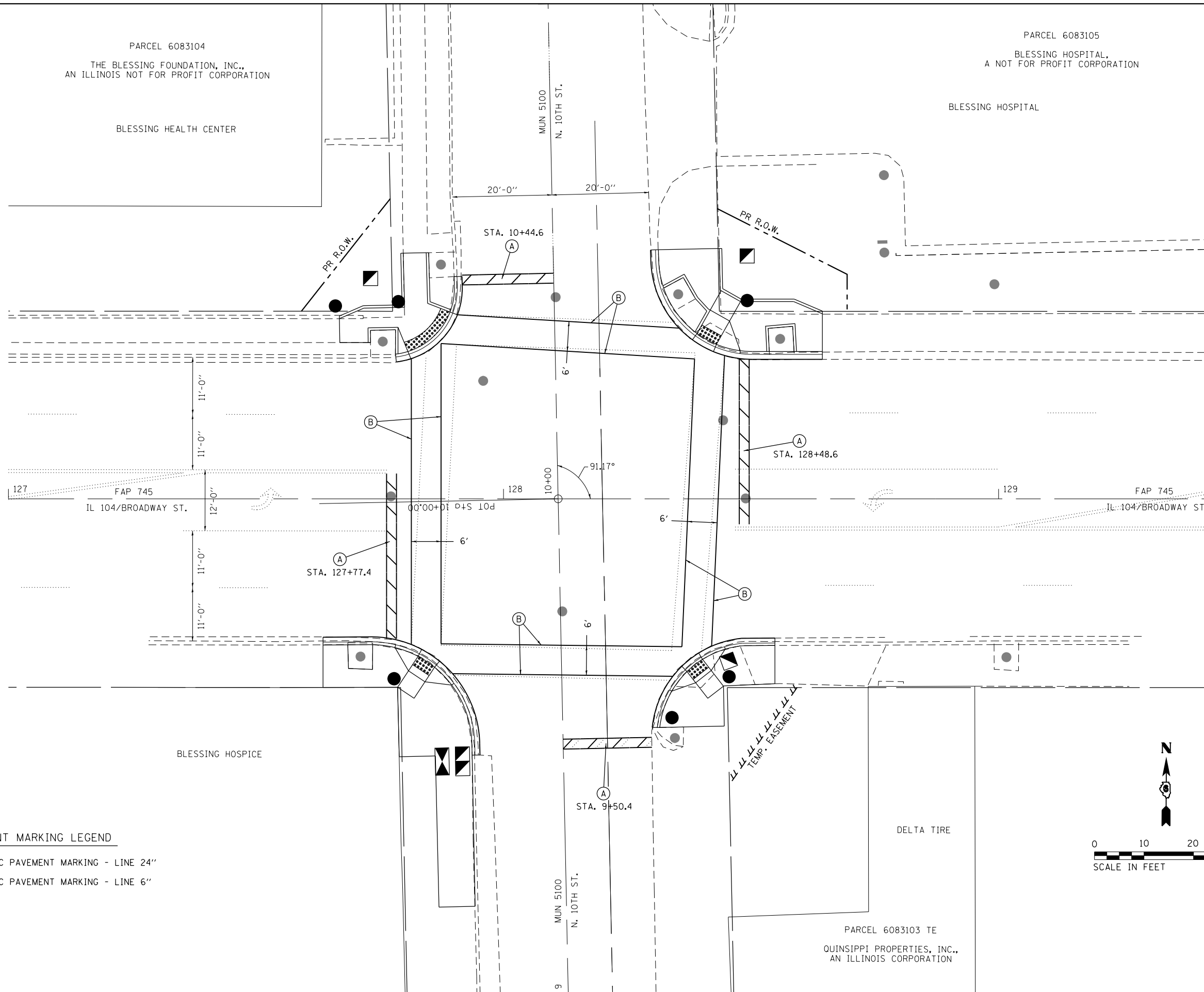
NOTES/LEGEND

- EXISTING MANHOLES/INLETS AND CONCRETE SLABS TO REMAIN IN PLACE
- PROPOSED DETECTABLE WARNING/DEPRESSED CURB AND GUTTER

FILE NAME =	USER NAME = martinjk	DESIGNED -	REVISED -	STATE OF ILLINOIS DEPARTMENT OF TRANSPORTATION	INTERSECTION DETAIL IL 104 (BROADWAY ST) & 10TH ST	F.A.P. RTE.	SECTION	COUNTY	TOTAL SHEETS	SHEET NO.	
Default	Plot Scale = 20.0000' / in.	DRAWN -	REVISED -			745	(1032)N	ADAMS	20	12	
	PLOT DATE = Jan-07-2015 09:58:50AM	CHECKED -	REVISED -			CONTRACT NO. 72G73					
		DATE -	REVISED -			ILLINOIS FED. AID PROJECT					

PARCEL 6083104
 THE BLESSING FOUNDATION, INC.,
 AN ILLINOIS NOT FOR PROFIT CORPORATION

PARCEL 6083105
 BLESSING HOSPITAL,
 A NOT FOR PROFIT CORPORATION



BLESSING HEALTH CENTER

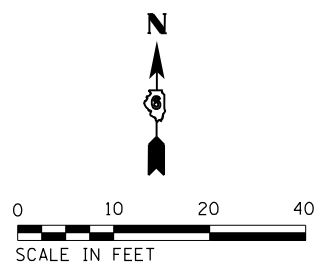
BLESSING HOSPITAL

BLESSING HOSPICE

DELTA TIRE

PARCEL 6083103 TE
 QUINSIPPI PROPERTIES, INC.,
 AN ILLINOIS CORPORATION

- PAVEMENT MARKING LEGEND**
- (A) THERMOPLASTIC PAVEMENT MARKING - LINE 24"
 - (B) THERMOPLASTIC PAVEMENT MARKING - LINE 6"



FILE NAME =	USER NAME = martinjk	DESIGNED -	REVISED -
ct:\pw\work\p\id\martinjk\d0372021\0672073-sht-plan.dgn		DRAWN -	REVISED -
Default	PLOT SCALE = 20.0000' / in.	CHECKED -	REVISED -
	PLOT DATE = Jan-07-2015 09:58:51AM	DATE -	REVISED -

**STATE OF ILLINOIS
 DEPARTMENT OF TRANSPORTATION**

PAVEMENT MARKING DETAIL			
IL 104 (BROADWAY ST) & 10TH ST			
SCALE:	SHEET	OF SHEETS	STA. TO STA.

F.A.P. RTE.	SECTION	COUNTY	TOTAL SHEETS	SHEET NO.
745	(1032)N	ADAMS	20	13
CONTRACT NO. 72G73			ILLINOIS FED. AID PROJECT	

TRAFFIC SIGNAL PLAN LEGEND

ITEM	REMOVAL	EXISTING	PROPOSED
ALUMINUM MAST ARM ASSEMBLY AND POLE			
STEEL MAST ARM ASSEMBLY AND POLE			
STEEL COMBINATION MAST ARM ASSEMBLY AND POLE WITH LUMINAIRE			
SIGNAL POST			
CONTROLLER CABINET			
MASTER CONTROLLER			
RAILROAD CONTROLLER			
UNINTERRUPTABLE POWER SUPPLY			
TEMPORARY WOOD POLE (CLASS 5 OR BETTER) 45 FOOT MINIMUM			
TEMPORARY WOOD POLE W/ GUY			
SERVICE INSTALLATION (P) POLE OR (G) GROUND MOUNT			
TEMPORARY SIGNAL HEAD			
SIGNAL HEAD (NUMBER INDICATE NUMBER OF SECTIONS)			
SIGNAL HEAD WITH BACKPLATE			
FLASHER INSTALLATION (S DENOTES SOLAR POWER)			
PEDESTRIAN SIGNAL HEAD			
PEDESTRIAN PUSH-BUTTON DETECTOR			
ACCESSIBLE PEDESTRIAN PUSH-BUTTON DETECTOR			
PRIORITY VEHICLE DETECTOR			
CONFORMATION BEACON			
VIDEO DETECTOR SYSTEM			
HANDHOLE			
DOUBLE HANDHOLE			
HEAVY DUTY HANDHOLE			
JUNCTION BOX			
GULFBOX JUNCTION			
CONDUIT SPLICE			

ITEM REMOVAL EXISTING PROPOSED

DETECTOR LOOP LARGE			
DETECTOR LOOP SMALL			
QUADRAPOLE DETECTOR LOOP			
DIRECT CONNECTED LOOP LEAD-IN (TWISTED)			
UNDERGROUND CONDUIT (UC)			

LENGTH - CONSTRUCTION (T=TRENCH, P=PUSHED, A=AGUERED, E= EXISTING)
 SIZE - TYPE (S=STEEL, P=PVC, F=FIBER DUCT, U=UNI-DUCT)

TRAFFIC SIGNAL DETAIL LEGEND

ITEM	REMOVAL	EXISTING	PROPOSED
SIGNAL SECTION - SOLID RED			
SIGNAL SECTION - SOLID YELLOW			
SIGNAL SECTION - SOLID GREEN			
SIGNAL SECTION - RED TURN ARROW			
SIGNAL SECTION - YELLOW TURN ARROW			
SIGNAL SECTION - FLASHING YELLOW ARROW			
SIGNAL SECTION - GREEN TURN ARROW			
PEDESTRIAN SIGNAL HEAD			
PEDESTRIAN SIGNAL HEAD W/ COUNTDOWN TIMER			
TRAFFIC SIGNAL BACKPLATE			
SIGNAL SECTION WITH LOUVRE			
SIGNAL SECTION WITH DUAL INDICATION			
ELECTRIC CABLE (NUMBER INDICATES NUMBER OF CONDUCTORS)			
ELECTRIC CABLE IDENTIFIER TAPE CODES (R=RED, W=WHITE, Y=YELLOW, G=GREEN, B=BLUE, O=ORANGE, V=VIOLET)			
DETECTOR LOOP			
QUADRAPOLE DETECTOR LOOP			

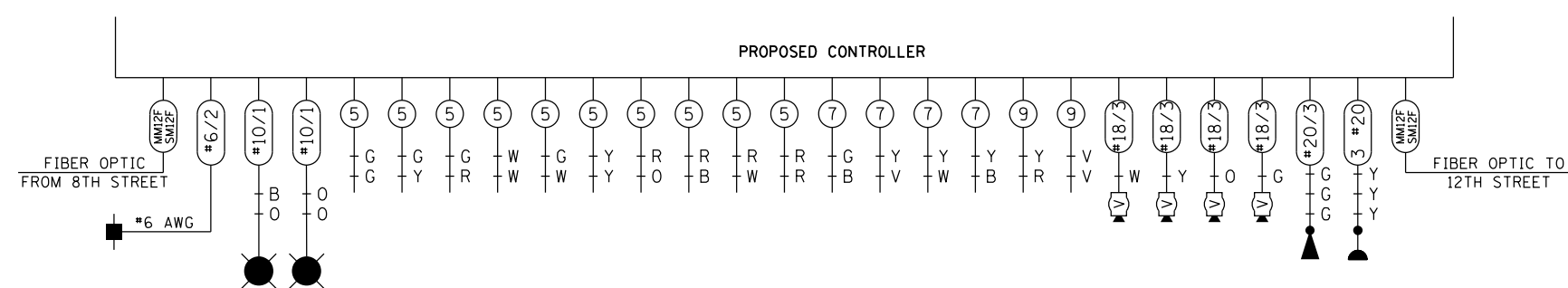
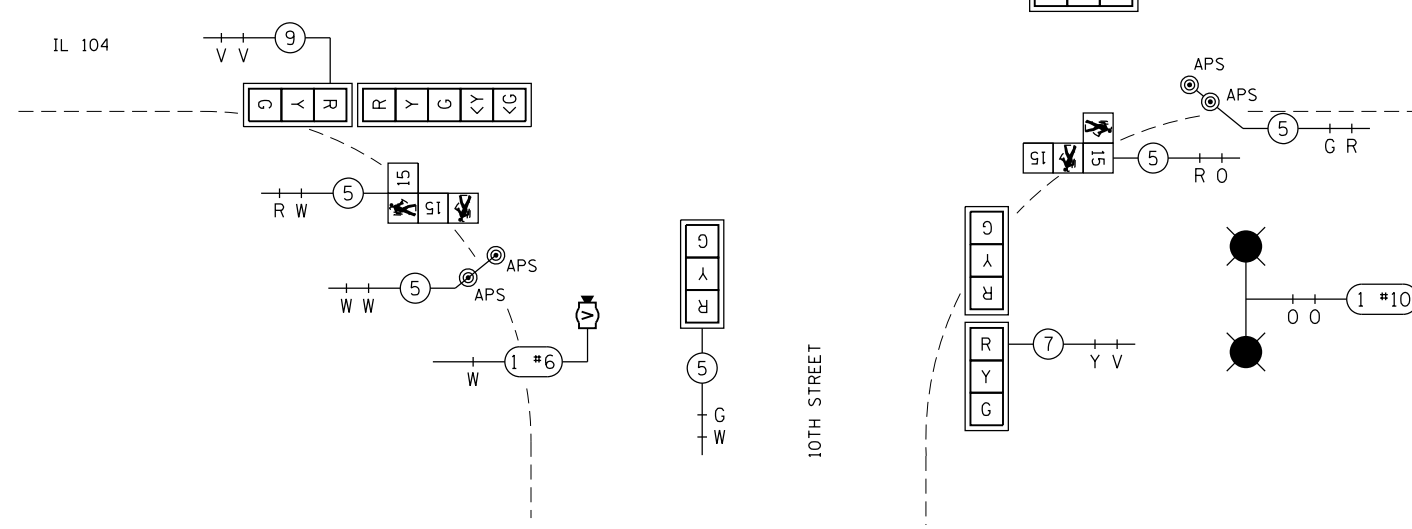
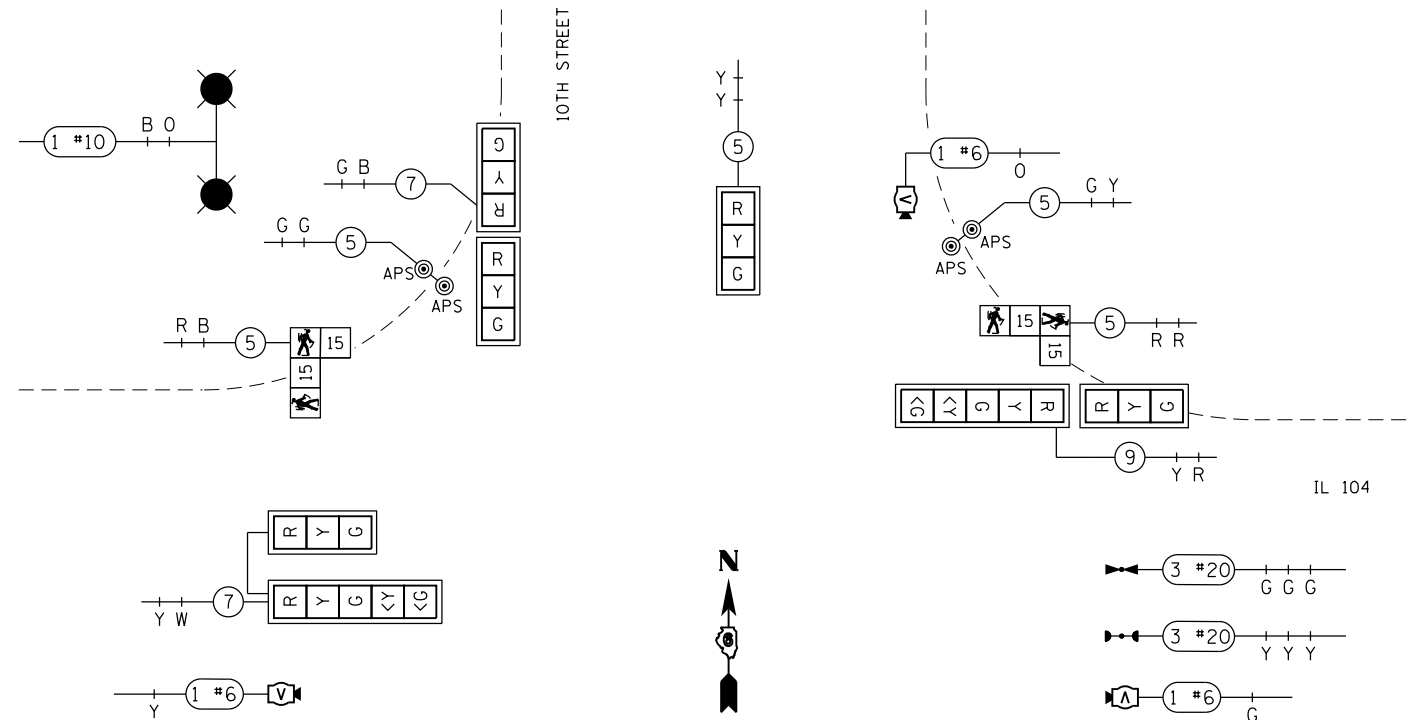
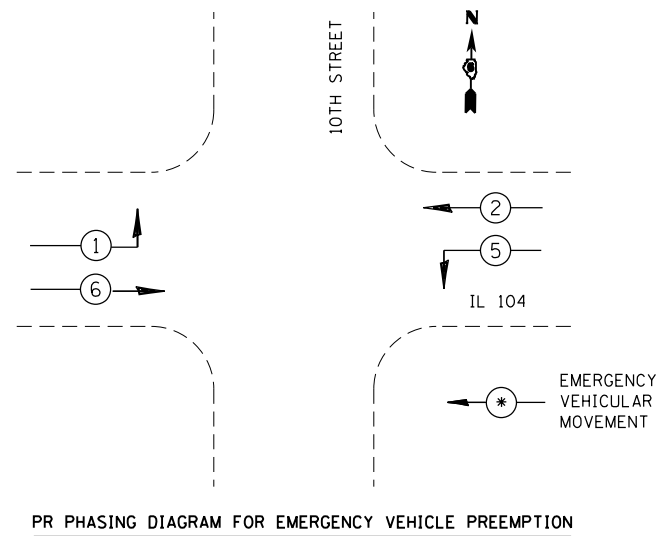
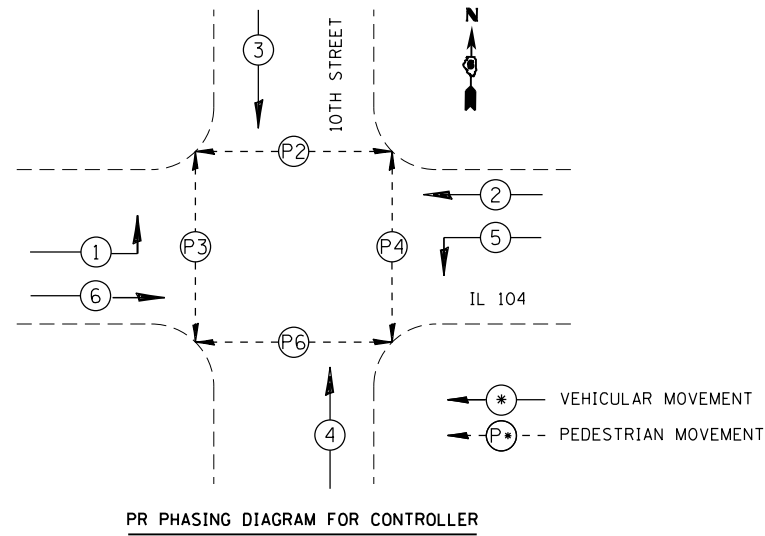
FILE NAME =	USER NAME = sparksgw	DESIGNED -	REVISED - CAD 06-22-1990
pw:\IL\084EBID\INTEG\illinois.gov\PIWIDOT\Documents\IDOT Offices\District 6\Projects\0672\DRAWING\DATA\EA0\Sheets\0672G73-sht-TS.dgn		CHECKED -	REVISED - DMS 09-23-2014
Default	PLOT SCALE = 40.0000' / in.	CHECKED -	REVISED -
	PLOT DATE = 12/5/2014	DATE -	REVISED -

STATE OF ILLINOIS
 DEPARTMENT OF TRANSPORTATION

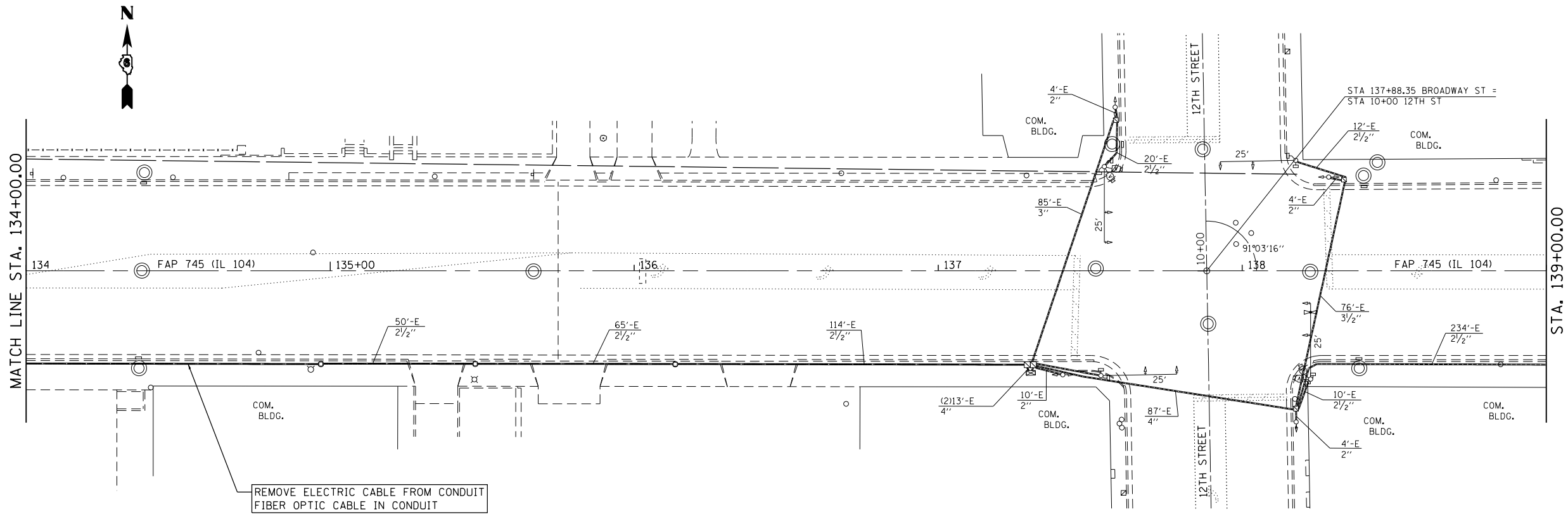
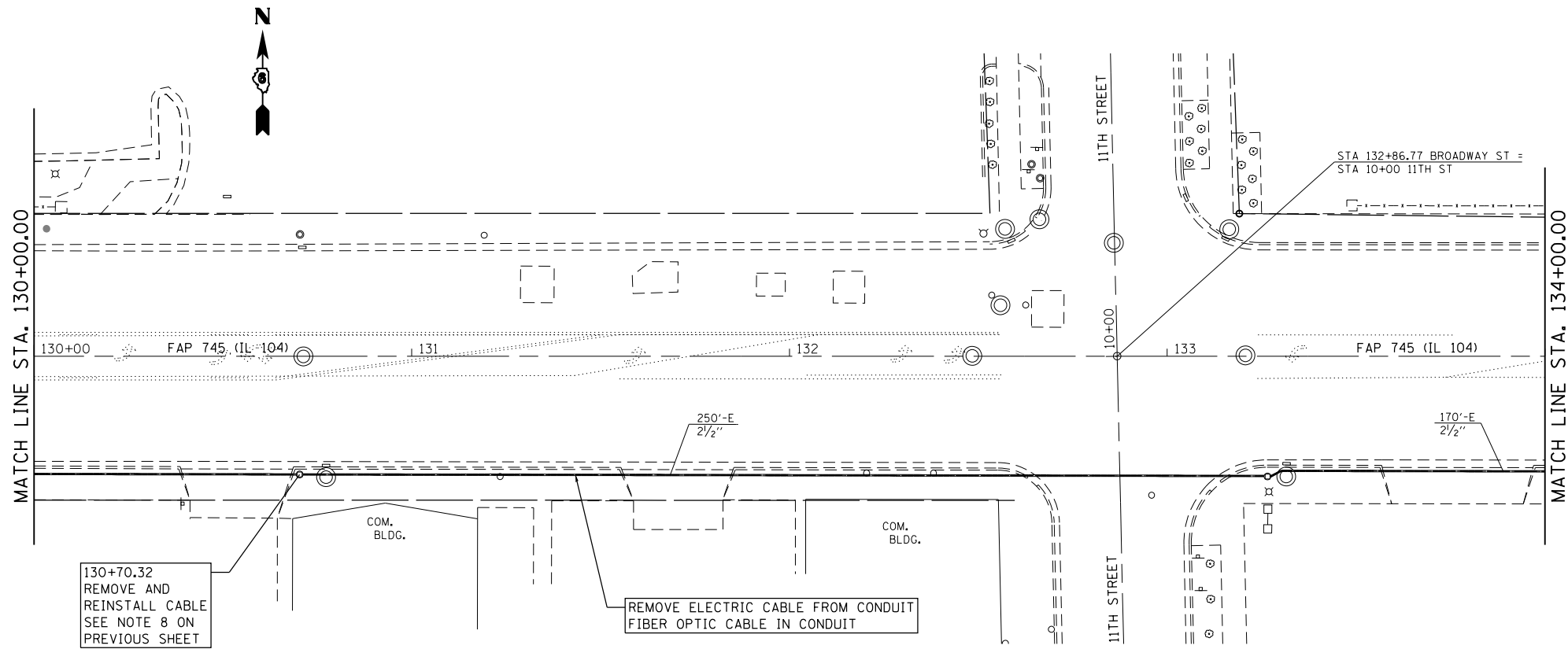
DISTRICT SIX
 TRAFFIC SIGNAL LEGEND STANDARD

SCALE: SHEET OF SHEETS STA. TO STA.

F.A.P. RTE.	SECTION	COUNTY	TOTAL SHEETS	SHEET NO.
745	(1032)N	ADAMS	20	14
CONTRACT NO. 72G73			ILLINOIS FED. AID PROJECT	



FILE NAME = c:\pwwork\pwwork\martinjk\d0372021\0672021\0672021-TSp1en1.dgn	USER NAME = martinjk	DESIGNED - DMS	REVISED -	STATE OF ILLINOIS DEPARTMENT OF TRANSPORTATION	TRAFFIC SIGNAL DETAIL IL 104 (BROADWAY ST) & 10TH STREET		F.A.P. RTE. = 745	SECTION = (1032)N	COUNTY = ADAMS	TOTAL SHEETS = 20	SHEET NO. = 17
	PLOT SCALE = 40.0000' / in.	CHECKED -	REVISED -				CONTRACT NO. 72G73				
Default	PLOT DATE = Dec-31-2014 09:30:27AM	DATE -	REVISED -	SCALE: SHEET OF SHEETS STA. TO STA.		ILLINOIS FED. AID PROJECT					



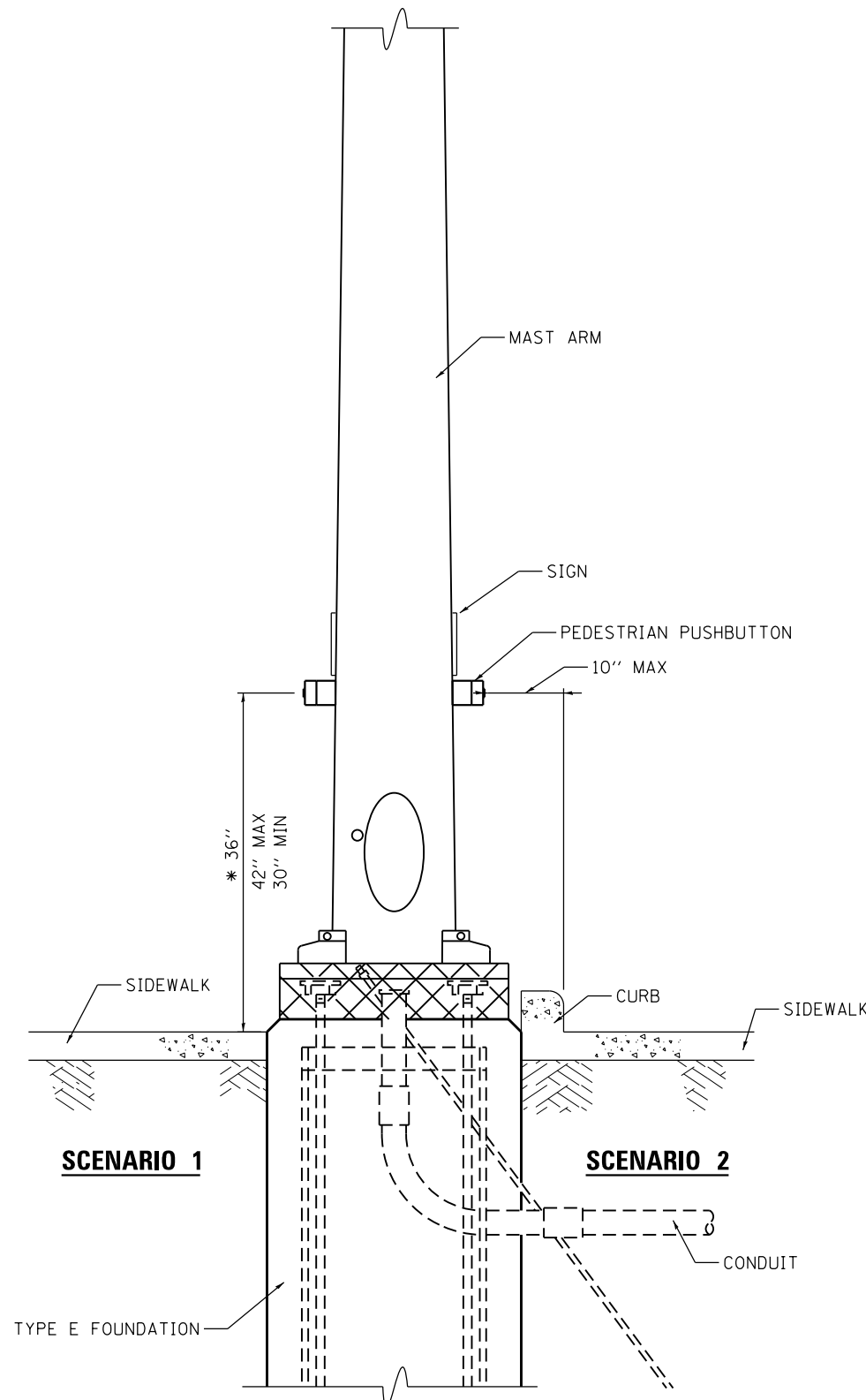
FILE NAME =	USER NAME = sparksgw	DESIGNED - DMS	REVISED -
p:\11084EBID\INTEG.illinois.gov\PI\DOT\Documents\IDOT Offices\District 6\Projects\06720\Drawings\EA\sh\MS\0672073-shr-TS.dwg		DRAWN - DMS	REVISED -
Default	PLOT SCALE = 40.0000' / in.	CHECKED -	REVISED -
	PLOT DATE = 12/5/2014	DATE -	REVISED -

**STATE OF ILLINOIS
DEPARTMENT OF TRANSPORTATION**

**TRAFFIC SIGNAL PLANS
INTERCONNECT**

SCALE: SHEET OF SHEETS STA. TO STA.

F.A.P. RTE.	SECTION	COUNTY	TOTAL SHEETS	SHEET NO.
745	(1032)N	ADAMS	20	18
CONTRACT NO. 72G73			ILLINOIS FED. AID PROJECT	

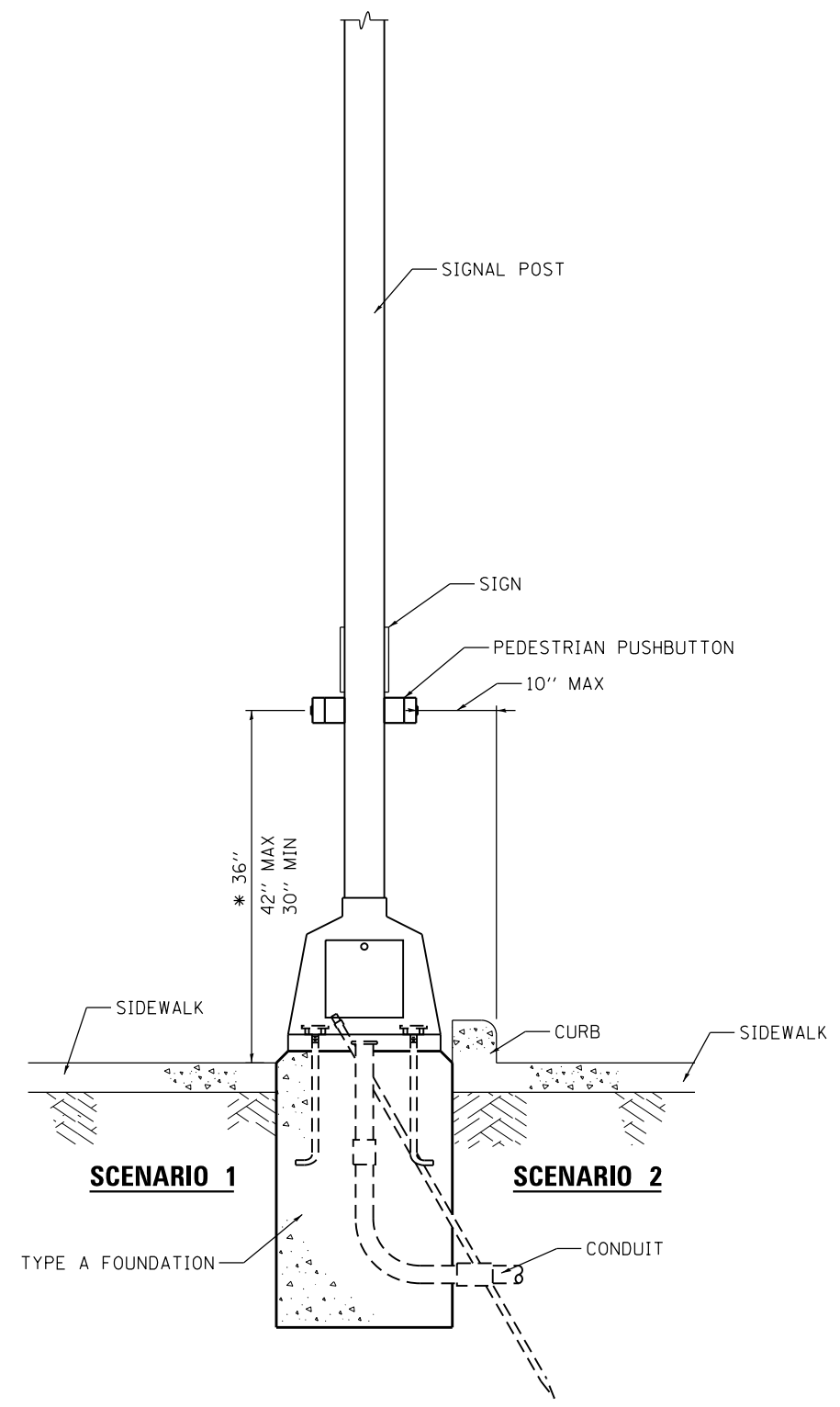


SCENARIO 1

SCENARIO 2

**PEDESTRIAN PUSHBUTTON INSTALLATION,
MAST ARM**

* 36" PREFERRED

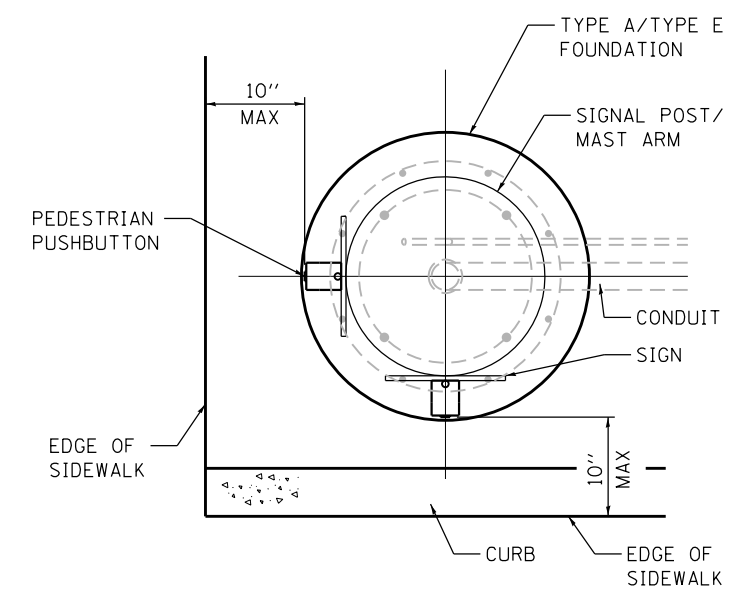


SCENARIO 1

SCENARIO 2

**PEDESTRIAN PUSHBUTTON INSTALLATION,
SIGNAL POST**

- GENERAL NOTES**
1. PREFERRED MOUNTING HEIGHT OF THE PUSHBUTTON SHALL BE APPROXIMATELY 3 FEET. THE HEIGHT SHALL BE MAXIMUM OF 3.5 FEET AND MINIMUM OF 2.5 FEET ABOVE SIDEWALK.
 2. REACH OF THE PUSHBUTTON SHALL BE A MAXIMUM OF 10 INCHES FROM THE EDGE OF THE SIDEWALK.
 3. PUSHBUTTON SHALL BE UNOBSTRUCTED AND ADJACENT TO ALL-WEATHER SURFACE TO PROVIDE ACCESS FROM A WHEELCHAIR.
 4. IN ANY CASE THE 10 INCH MAXIMUM DISTANCE IS NOT ACHIEVED, MODULAR EXTENSION BRACKETS SHALL BE INSTALLED. THE COST AND LABOR OF INSTALLING EXTENSION BRACKET SHALL BE INCLUDED IN THE COST OF PEDESTRIAN PUSHBUTTON.
 5. THE PUSHBUTTON FACE SHOULD BE PARALLEL TO THE CROSSWALK IT CONTROLS.



**PEDESTRIAN PUSHBUTTON INSTALLATION,
TOP VIEW**
NOT TO SCALE

FILE NAME =	USER NAME = sparksgw	DESIGNED - DMS 11-18-2014	REVISED -
pw:\11\084EBIDINTEG\11\inois.gov\PWIDOT\Documents\IDOT Offices\District 6\Projects\0672\DRAWING\DATA\084EBIDINTEG\11-18-2014-TS.dgn		REVISIONS	
Default	PLOT SCALE = 40.0000' / in.	CHECKED -	REVISED -
	PLOT DATE = 12/5/2014	DATE -	REVISED -

**STATE OF ILLINOIS
DEPARTMENT OF TRANSPORTATION**

DISTRICT SIX			
PEDESTRIAN PUSHBUTTON INSTALLATION DETAIL			
SCALE:	SHEET	OF SHEETS	STA. TO STA.

F.A.P. R.E.	SECTION	COUNTY	TOTAL SHEETS	SHEET NO.
745	(1032)N	ADAMS	20	20
CONTRACT NO. 72G73			ILLINOIS FED. AID PROJECT	