

STATE OF ILLINOIS
DEPARTMENT OF TRANSPORTATION
DIVISION OF HIGHWAYS

**PROPOSED
HIGHWAY PLANS**

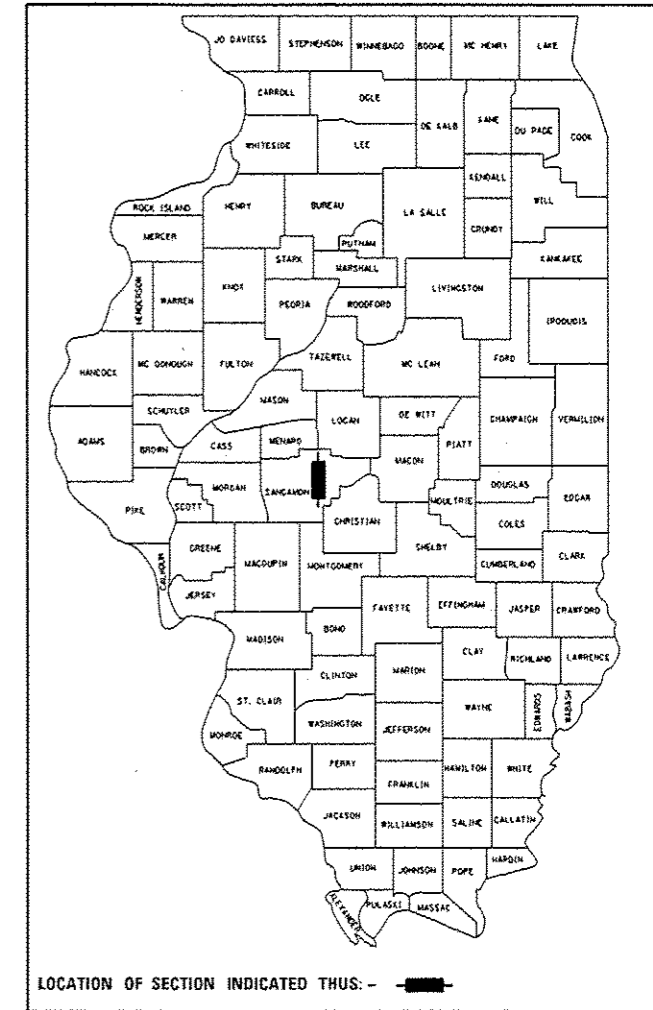
FAP ROUTE 668, DIRKSEN PKWY
SECTION (28)TS-3
PROJECT ACHSIP-0668 (007)
TRAFFIC SIGNALS INSTALLATION
PEDESTRIAN SIGNALS
SANGAMON COUNTY

C-96-075-14

R 5 W — R 4 W

F.A.P. RTE.	SECTION	COUNTY	TOTAL SHEETS	SHEET NO.
668	(28)TS-3	SANGAMON	19	1
ILLINOIS			CONTRACT NO. 72H04	

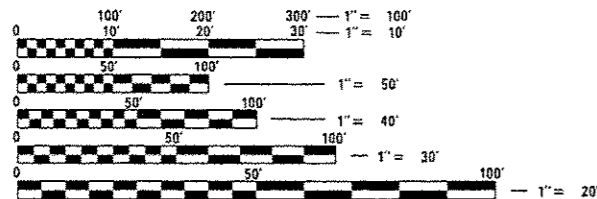
D-96-075-14



FAP ROUTE 668, DIRKSEN PARKWAY
ADT (2012)=22,900
MU=1.09%, SU=4.37%, PV=94.54%
SPEED LIMIT=45 MPH (DESIGN), 40 MPH (POSTED)

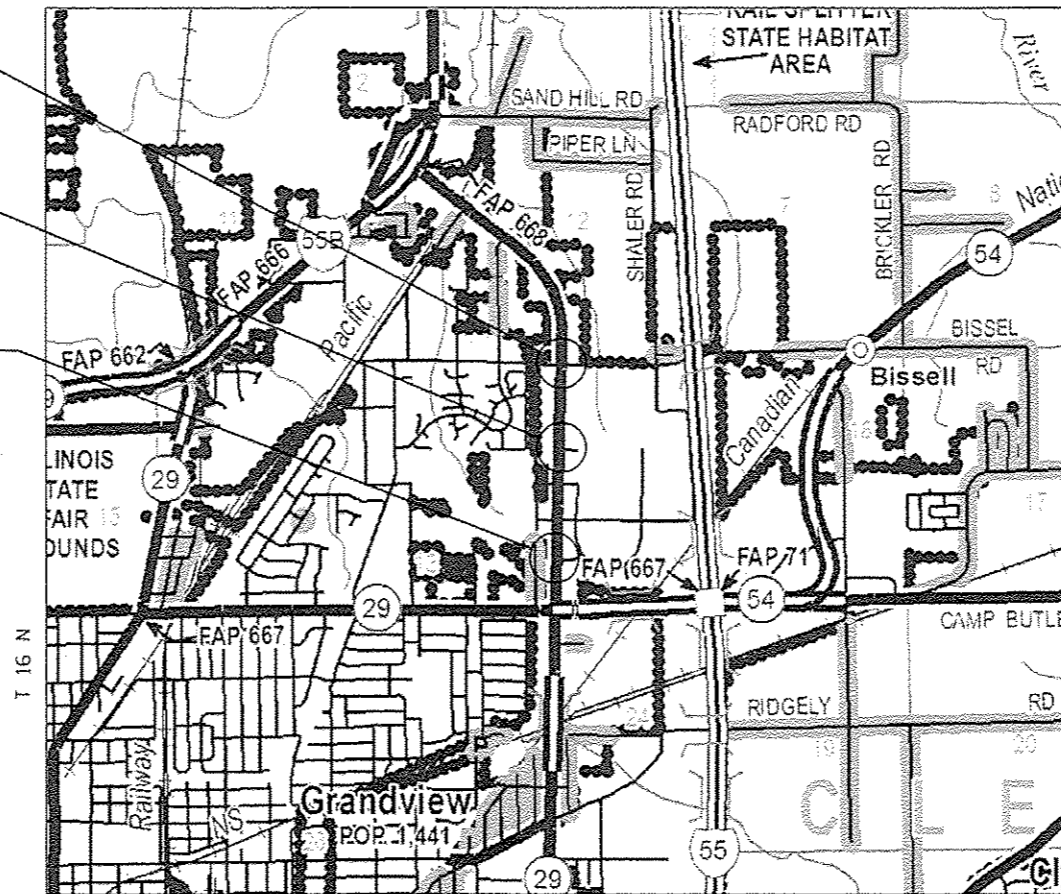
FOR INDEX OF SHEETS, SEE SHEET NO. 2

- PEDESTRIAN SIGNALS
DIRKSEN PKWY & BISSELL RD/
MAYDEN RD
- TRAFFIC SIGNAL INSTALLATION
DIRKSEN PKWY & SAM'S PLACE
- PEDESTRIAN SIGNALS
DIRKSEN PKWY & NORTHFIELD DR



FULL SIZE PLANS HAVE BEEN PREPARED USING STANDARD ENGINEERING SCALES. REDUCED SIZED PLANS WILL NOT CONFORM TO STANDARD SCALES. IN MAKING MEASUREMENTS ON REDUCED PLANS, THE ABOVE SCALES MAY BE USED.

J.U.L.I.E.
JOINT UTILITY LOCATION INFORMATION FOR EXCAVATION
1-800-892-0123
OR 811



LOCATION MAP

NET LENGTH = 4,113.12 FT. = 0.779 MILE

SENIOR TEAM ENGINEER: VINCE MADONIA (217) 785-9046
TEAM ENGINEER: VICTOR YOUNG (217) 524-0472

CONTRACT NO. 72H04

STATE OF ILLINOIS
DEPARTMENT OF TRANSPORTATION
DIVISION OF HIGHWAYS

SUBMITTED *October 20 20 14*
Roger A. Driskell, Jr.
DEPUTY DIRECTOR OF HIGHWAYS, REGION ENGINEER

Jan 30 20 15
John D. Baranzelli, P.E.
ENGINEER OF DESIGN AND ENVIRONMENT

Jan 30 20 15
Omer Osman, P.E.
DIRECTOR OF HIGHWAYS, CHIEF ENGINEER

PRINTED BY THE AUTHORITY
OF THE STATE OF ILLINOIS

SUMMARY OF QUANTITIES

90/10 FED / STATE

CONSTRUCTION CODE

URBAN

CODE NO.	ITEM	UNIT	TOTAL QUANTITY	CONSTRUCTION CODE		
				TRAFFIC SIGNALS 0021	TRAFFIC SIGNALS 0021	TRAFFIC SIGNALS 0021
				NORTHFIELD DR	SAMS PLACE	BISSELL/ MAYDEN
* 66900200	NON-SPECIAL WASTE DISPOSAL	CU YD	11		11	
* 66900400	SPECIAL WASTE GROUNDWATER DISPOSAL	GALLON	1595		1595	
* 66900450	SPECIAL WASTE PLANS AND REPORTS	L SUM	1		1	
* 66900530	SOIL DISPOSAL ANALYSIS	EACH	1		1	
67100100	MOBILIZATION	L SUM	1	0.25	0.5	0.25
70102632	TRAFFIC CONTROL AND PROTECTION, STANDARD 701602	L SUM	1	0.25	0.5	0.25
70102635	TRAFFIC CONTROL AND PROTECTION, STANDARD 701701	L SUM	1	0.25	0.5	0.25
* 72000100	SIGN PANEL - TYPE 1	SQ FT	15		15	
* 72000200	SIGN PANEL - TYPE 2	SQ FT	44		44	
* 78006100	PREFORMED THERMOPLASTIC PAVEMENT MARKING - LETTERS AND SYMBOLS	SQ FT	63		63	
* 78006130	PREFORMED THERMOPLASTIC PAVEMENT MARKING - LINE 6"	FOOT	241		241	
* 78006180	PREFORMED THERMOPLASTIC PAVEMENT MARKING - LINE 24"	FOOT	85		85	
78300100	PAVEMENT MARKING REMOVAL	SQ FT	28		28	
80500100	SERVICE INSTALLATION, TYPE A	EACH	1		1	

* SPECIALTY ITEM

SUMMARY OF QUANTITIES

90/10 FED/ STATE

CONSTRUCTION CODE

URBAN

CODE NO.	ITEM	UNIT	TOTAL QUANTITY	CONSTRUCTION CODE		
				TRAFFIC SIGNALS 0021	TRAFFIC SIGNALS 0021	TRAFFIC SIGNALS 0021
				NORTHFIELD DR	SAMS PLACE	BISSELL/ MAYDEN
81028340	UNDERGROUND CONDUIT, PVC, 1 1/2" DIA.	FOOT	13		13	
81028350	UNDERGROUND CONDUIT, PVC, 2" DIA.	FOOT	12		12	
81028360	UNDERGROUND CONDUIT, PVC, 2 1/2" DIA.	FOOT	168	14	132	22
81028390	UNDERGROUND CONDUIT, PVC, 4" DIA.	FOOT	548	168	380	
81400100	HANDHOLE	EACH	5	2	3	
81400300	DOUBLE HANDHOLE	EACH	1		1	
85000200	MAINTENANCE OF EXISTING TRAFFIC SIGNAL INSTALLATION	EACH	2	1		1
85700200	FULL-ACTUATED CONTROLLER AND TYPE IV CABINET	EACH	1		1	
85706000	INTERSECTION MONITOR UNIT	EACH	1		1	
86200200	UNINTERRUPTABLE POWER SUPPLY, STANDARD	EACH	1		1	
86400100	TRANSCEIVER - FIBER OPTIC	EACH	1		1	
87100140	FIBER OPTIC CABLE IN CONDUIT, NO. 62.5/125, 12F	FOOT	880		880	
87300010	GROUNDING EXISTING HANDHOLE FRAME AND COVER	EACH	10	5		5
87301215	ELECTRIC CABLE IN CONDUIT, SIGNAL NO. 14 2C	FOOT	3005	1194	1512	299

14

SUMMARY OF QUANTITIES

90/10 FED/STATE

CODE NO.	ITEM	UNIT	TOTAL QUANTITY	CONSTRUCTION CODE		
				URBAN		
				TRAFFIC SIGNALS 0021 NORTHFIELD DR	TRAFFIC SIGNALS 0021 SAMS PLACE	TRAFFIC SIGNALS 0021 BISSELL/ MAYDEN
87301225	ELECTRIC CABLE IN CONDUIT, SIGNAL NO. 14 3C	FOOT	2806	1196	1176	434
87301245	ELECTRIC CABLE IN CONDUIT, SIGNAL NO. 14 5C	FOOT	1629		1494	135
87301255	ELECTRIC CABLE IN CONDUIT, SIGNAL NO. 14 7C	FOOT	911		911	
87301265	ELECTRIC CABLE IN CONDUIT, SIGNAL NO. 14 9C	FOOT	419		419	
87301705	ELECTRIC CABLE IN CONDUIT, COMMUNICATION NO. 18 3 PAIR	FOOT	1040		1040	
87301805	ELECTRIC CABLE IN CONDUIT, SERVICE, NO. 6 2 C	FOOT	35		35	
87301900	ELECTRIC CABLE IN CONDUIT, EQUIPMENT GROUNDING CONDUCTOR, NO. 6 1C	FOOT	1540	526	537	477
87502660	TRAFFIC SIGNAL POST, ALUMINUM 12 FT.	EACH	6	3	2	1
87502700	TRAFFIC SIGNAL POST, ALUMINUM 16 FT.	EACH	1		1	
87601100	PEDESTRIAN PUSH-BUTTON POST, GALVANIZED STEEL, TYPE I	EACH	2	1	1	
87700210	STEEL MAST ARM ASSEMBLY AND POLE, 34 FT.	EACH	1		1	
87700230	STEEL MAST ARM ASSEMBLY AND POLE, 38 FT.	EACH	1		1	
87700290	STEEL MAST ARM ASSEMBLY AND POLE, 50 FT.	EACH	1		1	
87700404	STEEL MAST ARM ASSEMBLY AND POLE, 62 FT.	EACH	1		1	

SUMMARY OF QUANTITIES

90/10 FED/ STATE

URBAN

CONSTRUCTION CODE

CODE NO.	ITEM	UNIT	TOTAL QUANTITY	CONSTRUCTION CODE		
				TRAFFIC SIGNALS 0021	TRAFFIC SIGNALS 0021	TRAFFIC SIGNALS 0021
				NORTHFIELD DR	SAMS PLACE	BISSELL/ MAYDEN
87800100	CONCRETE FOUNDATION, TYPE A	FOOT	21	9	9	3
87800150	CONCRETE FOUNDATION, TYPE C	FOOT	3		3	
87800415	CONCRETE FOUNDATION, TYPE E 36-INCH DIAMETER	FOOT	45		45	
87800420	CONCRETE FOUNDATION, TYPE E 42-INCH DIAMETER	FOOT	25		25	
87900200	DRILL EXISTING HANDHOLE	EACH	4	3		1
88040070	SIGNAL HEAD, POLYCARBONATE, LED, 1-FACE, 3-SECTION, BRACKET MOUNTED	EACH	1		1	
88040090	SIGNAL HEAD, POLYCARBONATE, LED, 1-FACE, 3-SECTION, MAST ARM MOUNTED	EACH	2		2	
88040110	SIGNAL HEAD, POLYCARBONATE, LED, 1-FACE, 4-SECTION, BRACKET MOUNTED	EACH	1		1	
88040120	SIGNAL HEAD, POLYCARBONATE, LED, 1-FACE, 4-SECTION, MAST ARM MOUNTED	EACH	2		2	
88040160	SIGNAL HEAD, POLYCARBONATE, LED, 1-FACE, 5-SECTION, MAST ARM MOUNTED	EACH	3		3	
88040260	SIGNAL HEAD, POLYCARBONATE, LED, 2-FACE, 1-3-SECTION, 1-5-SECTION, BRACKET MOUNTED	EACH	2		2	
88040280	SIGNAL HEAD, POLYCARBONATE, LED, 2-FACE, 1-4 SECTION, 1-5 SECTION, BRACKET MOUNTED	EACH	1		1	
88102825	PEDESTRIAN SIGNAL HEAD, POLYCARBONATE, LED, 1-FACE, BRACKET MOUNTED WITH COUNT DOWN TIMER	EACH	14	6	4	4
88102845	PEDESTRIAN SIGNAL HEAD, POLYCARBONATE, LED, 2-FACE, BRACKET MOUNTED WITH COUNT DOWN TIMER	EACH	5	2	2	1

14

90/10 FED / STATE

SUMMARY OF QUANTITIES

URBAN

CONSTRUCTION CODE

CODE NO.	ITEM	UNIT	TOTAL QUANTITY	TRAFFIC SIGNALS	TRAFFIC SIGNALS	TRAFFIC SIGNALS
				0021	0021	0021
				NORTHFIELD DR	SAMS PLACE	BISSELL/ MAYDEN
88200510	TRAFFIC SIGNAL BACKPLATE, RETROREFLECTIVE	EACH	15		15	
88800100	PEDESTRIAN PUSH-BUTTON	EACH	24	10	8	6
89502200	MODIFY EXISTING CONTROLLER	EACH	2	1		1
89502300	REMOVE ELECTRIC CABLE FROM CONDUIT	FOOT	1059		1059	
89502350	REMOVE AND REINSTALL ELECTRIC CABLE FROM CONDUIT	FOOT	228		228	
89502375	REMOVE EXISTING TRAFFIC SIGNAL EQUIPMENT	EACH	12		8	4
Z0010688	CAMERA MOUNTING ASSEMBLY	EACH	4		4	
Z0033072	VIDEO VEHICLE DETECTION SYSTEM	EACH	1		1	

• ITEM NO FOR IMFORMATION ONLY

ITEM NO.	ITEM	UNIT	TOTAL QUANTITY	DIRKSEN AND NORTHFIELD	DIRKSEN AND SAM'S PLACE	DIRKSEN AND BISSELL/MAYDEN
72000100	SIGN PANEL - TYPE 1	SO FT	15	-	15	-
72000200	SIGN PANEL - TYPE 2	SO FT	44	-	44	-
78006100	PREFORMED THERMOPLASTIC PAVEMENT MARKING - LETTERS AND SYMBOLS	SO FT	63	-	63	-
78006130	PREFORMED THERMOPLASTIC PAVEMENT MARKING - LINE 6"	FOOT	241	-	241	-
78006180	PREFORMED THERMOPLASTIC PAVEMENT MARKING - LINE 24"	FOOT	85	-	85	-
78300100	PAVEMENT MARKING REMOVAL	SO FT	28	-	28	-
80500100	SERVICE INSTALLATION, TYPE A	EACH	1	-	1	-
81028340	UNDERGROUND CONDUIT, PVC, 1 1/2" DIA.	FOOT	13	-	13	-
81028350	UNDERGROUND CONDUIT, PVC, 2" DIA.	FOOT	12	-	12	-
81028360	UNDERGROUND CONDUIT, PVC, 2 1/2" DIA.	FOOT	168	14	132	22
81028390	UNDERGROUND CONDUIT, PVC, 4" DIA.	FOOT	548	168	380	-
81400100	HANDHOLE	EACH	5	2	3	-
81400300	DOUBLE HANDHOLE	EACH	1	-	1	-
85000200	MAINTENANCE OF EXISTING TRAFFIC SIGNAL INSTALLATION	EACH	2	1	-	1
85700200	FULL-ACTUATED CONTROLLER AND TYPE IV CABINET	EACH	1	-	1	-
86200200	UNINTERRUPTABLE POWER SUPPLY, STANDARD	EACH	1	-	1	-
86400100	TRANSCEIVER - FIBER OPTIC	EACH	1	-	1	-
87100140	FIBER OPTIC CABLE IN CONDUIT, NO. 62.5/125, 12F	FOOT	880	-	880	-
87300010	GROUNDING EXISTING HANDHOLE FRAME AND COVER	EACH	10	5	-	5
87301215	ELECTRIC CABLE IN CONDUIT, SIGNAL NO. 14 2C	FOOT	3,005	1,194	1,512	299
87301225	ELECTRIC CABLE IN CONDUIT, SIGNAL NO. 14 3C	FOOT	2,806	1,196	1,176	434
87301245	ELECTRIC CABLE IN CONDUIT, SIGNAL NO. 14 5C	FOOT	1,629	-	1,494	135
87301255	ELECTRIC CABLE IN CONDUIT, SIGNAL NO. 14 7C	FOOT	911	-	911	-
87301265	ELECTRIC CABLE IN CONDUIT, SIGNAL NO. 14 9C	FOOT	419	-	419	-
87301705	ELECTRIC CABLE IN CONDUIT, COMMUNICATION NO. 18 3 PAIR	FOOT	1,040	-	1,040	-
87301805	ELECTRIC CABLE IN CONDUIT, SERVICE, NO. 6 2 C	FOOT	35	-	35	-
87301900	ELECTRIC CABLE IN CONDUIT, EQUIPMENT GROUNDING CONDUCTOR, NO. 6 1C	FOOT	1,540	526	537	477
87502660	TRAFFIC SIGNAL POST, ALUMINUM 12 FT.	EACH	6	3	2	1
87502700	TRAFFIC SIGNAL POST, ALUMINUM 16 FT.	EACH	1	-	1	-
87601100	PEDESTRIAN PUSH-BUTTON POST, GALVANIZED STEEL, TYPE I	EACH	2	1	1	-
87700210	STEEL MAST ARM ASSEMBLY AND POLE, 34 FT.	EACH	1	-	1	-
87700230	STEEL MAST ARM ASSEMBLY AND POLE, 38 FT.	EACH	1	-	1	-
87700290	STEEL MAST ARM ASSEMBLY AND POLE, 50 FT.	EACH	1	-	1	-
87700404	STEEL MAST ARM ASSEMBLY AND POLE, 62 FT.	EACH	1	-	1	-
87800100	CONCRETE FOUNDATION, TYPE A	FOOT	21	9	9	3
87800150	CONCRETE FOUNDATION, TYPE C	FOOT	3	-	3	-
87800415	CONCRETE FOUNDATION, TYPE E 36-INCH DIAMETER	FOOT	45	-	45	-
87800420	CONCRETE FOUNDATION, TYPE E 42-INCH DIAMETER	FOOT	25	-	25	-
87900200	DRILL EXISTING HANDHOLE	EACH	4	3	-	1
88040070	SIGNAL HEAD, POLYCARBONATE, LED, 1-FACE, 3-SECTION, BRACKET MOUNTED	EACH	1	-	1	-
88040090	SIGNAL HEAD, POLYCARBONATE, LED, 1-FACE, 3-SECTION, MAST ARM MOUNTED	EACH	2	-	2	-
88040110	SIGNAL HEAD, POLYCARBONATE, LED, 1-FACE, 4-SECTION, BRACKET MOUNTED	EACH	1	-	1	-
88040120	SIGNAL HEAD, POLYCARBONATE, LED, 1-FACE, 4-SECTION, MAST ARM MOUNTED	EACH	2	-	2	-
88040160	SIGNAL HEAD, POLYCARBONATE, LED, 1-FACE, 5-SECTION, MAST ARM MOUNTED	EACH	3	-	3	-
88040260	SIGNAL HEAD, POLYCARBONATE, LED, 2-FACE, 1-3-SECTION, 1-5-SECTION, BRACKET MOUNTED	EACH	2	-	2	-
88040280	SIGNAL HEAD, POLYCARBONATE, LED, 2-FACE, 1-4 SECTION, 1-5 SECTION, BRACKET MOUNTED	EACH	1	-	1	-
88102825	PEDESTRIAN SIGNAL HEAD, POLYCARBONATE, LED, 1-FACE, BRACKET MOUNTED WITH COUNT DOWN TIMER	EACH	14	6	4	4
88102845	PEDESTRIAN SIGNAL HEAD, POLYCARBONATE, LED, 2-FACE, BRACKET MOUNTED WITH COUNT DOWN TIMER	EACH	5	2	2	1
88200510	TRAFFIC SIGNAL BACKPLATE, RETROREFLECTIVE	EACH	15	-	15	-
88800100	PEDESTRIAN PUSH-BUTTON	EACH	24	10	8	6
89502200	MODIFY EXISTING CONTROLLER	EACH	2	1	-	1
89502300	REMOVE ELECTRIC CABLE FROM CONDUIT	FOOT	1,059	-	1,059	-
89502350	REMOVE AND REINSTALL ELECTRIC CABLE FROM CONDUIT	FOOT	228	-	228	-
89502375	REMOVE EXISTING TRAFFIC SIGNAL EQUIPMENT	EACH	12	8	-	4
Z0010688	CAMERA MOUNTING ASSEMBLY	EACH	4	-	4	-
Z0033072	VIDEO VEHICLE DETECTION SYSTEM	EACH	1	-	1	-

FILE NAME =	USER NAME = sparksgr	DESIGNED - DMS	REVISED -	STATE OF ILLINOIS DEPARTMENT OF TRANSPORTATION	SCHEDULE OF QUANTITIES DIRKSEN AT NORTHFIELD, SAM'S PLACE, BISSELL/MAYDEN	F.A.P. RTE.	SECTION	COUNTY	TOTAL SHEETS	SHEET NO.
pw\11\084EBIDINTEG\illinois.gov\PIW001\Documents\DOT Offices\District 6\Projects\0672\Drawings\0672\0672H04-shr-TS.dgn	DESIGNED - DMS	REVISED -	668			(28)TS-3	SANGAMON	19	8	
PLOT SCALE = 40.0000' / in.	CHECKED -	REVISED -	CONTRACT NO. 72H04							
Default	PLOT DATE = 10/21/2014	DATE -	REVISIED -			SCALE:	SHEET OF SHEETS	STA. TO STA.	ILLINOIS FED. AID PROJECT	

TRAFFIC SIGNAL PLAN LEGEND

ITEM	REMOVAL	EXISTING	PROPOSED
ALUMINUM MAST ARM ASSEMBLY AND POLE			
STEEL MAST ARM ASSEMBLY AND POLE			
STEEL COMBINATION MAST ARM ASSEMBLY AND POLE WITH LUMINAIRE			
SIGNAL POST			
CONTROLLER CABINET			
MASTER CONTROLLER			
RAILROAD CONTROLLER			
UNINTERRUPTABLE POWER SUPPLY			
TEMPORARY WOOD POLE (CLASS 5 OR BETTER) 45 FOOT MINIMUM			
TEMPORARY WOOD POLE W/ GUY			
SERVICE INSTALLATION (P) POLE OR (G) GROUND MOUNT			
TEMPORARY SIGNAL HEAD			
SIGNAL HEAD (NUMBER INDICATE NUMBER OF SECTIONS)			
SIGNAL HEAD WITH BACKPLATE			
FLASHER INSTALLATION (S DENOTES SOLAR POWER)			
PEDESTRIAN SIGNAL HEAD			
PEDESTRIAN PUSH-BUTTON DETECTOR			
ACCESSIBLE PEDESTRIAN PUSH-BUTTON DETECTOR			
PRIORITY VEHICLE DETECTOR			
CONFORMATION BEACON			
VIDEO DETECTOR SYSTEM			
HANDHOLE			
DOUBLE HANDHOLE			
HEAVY DUTY HANDHOLE			
JUNCTION BOX			
GULFBOX JUNCTION			
CONDUIT SPLICE			

ITEM	REMOVAL	EXISTING	PROPOSED
DETECTOR LOOP LARGE			
DETECTOR LOOP SMALL			
QUADRAPOLE DETECTOR LOOP			
DIRECT CONNECTED LOOP LEAD-IN (TWISTED)			
UNDERGROUND CONDUIT (UC)			

LENGTH - CONSTRUCTION (T=TRENCH, P=PUSHED, A=AGUERED, E= EXISTING)
 SIZE - TYPE (S=STEEL, P=PVC, F=FIBER DUCT, U=UNI-DUCT)



TRAFFIC SIGNAL DETAIL LEGEND

ITEM	REMOVAL	EXISTING	PROPOSED
SIGNAL SECTION - SOLID RED			
SIGNAL SECTION - SOLID YELLOW			
SIGNAL SECTION - SOLID GREEN			
SIGNAL SECTION - RED TURN ARROW			
SIGNAL SECTION - YELLOW TURN ARROW			
SIGNAL SECTION - FLASHING YELLOW ARROW			
SIGNAL SECTION - GREEN TURN ARROW			
PEDESTRIAN SIGNAL HEAD			
PEDESTRIAN SIGNAL HEAD W/ COUNTDOWN TIMER			
TRAFFIC SIGNAL BACKPLATE			
SIGNAL SECTION WITH LOUVRE			
SIGNAL SECTION WITH DUAL INDICATION			
ELECTRIC CABLE (NUMBER INDICATES NUMBER OF CONDUCTORS)			
ELECTRIC CABLE IDENTIFIER TAPE CODES (R=RED, W=WHITE, Y=YELLOW, G=GREEN, B=BLUE, O=ORANGE, V=VIOLET)			
DETECTOR LOOP			
QUADRAPOLE DETECTOR LOOP			

NOTES:

1. WHERE "UTILIZE EX CABLE" IS LABELED, EX CABLE FOR EX PEDESTRIAN SIGNAL HEADS AND EX PEDESTRIAN PUSH-BUTTON SHALL BE USED FOR PR PEDESTRIAN SIGNAL HEADS AND PUSH-BUTTON. SEE TRAFFIC SIGNAL DETAIL ON NEXT SHEET.

2. REMOVE EXISTING TRAFFIC SIGNAL EQUIPMENT:

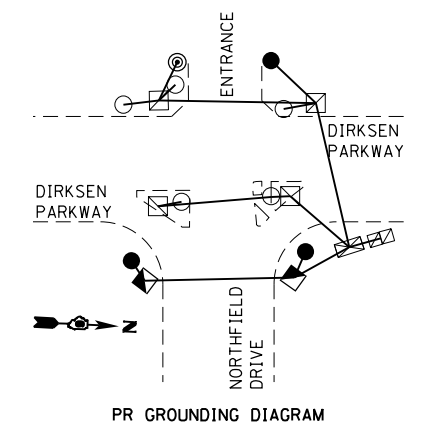
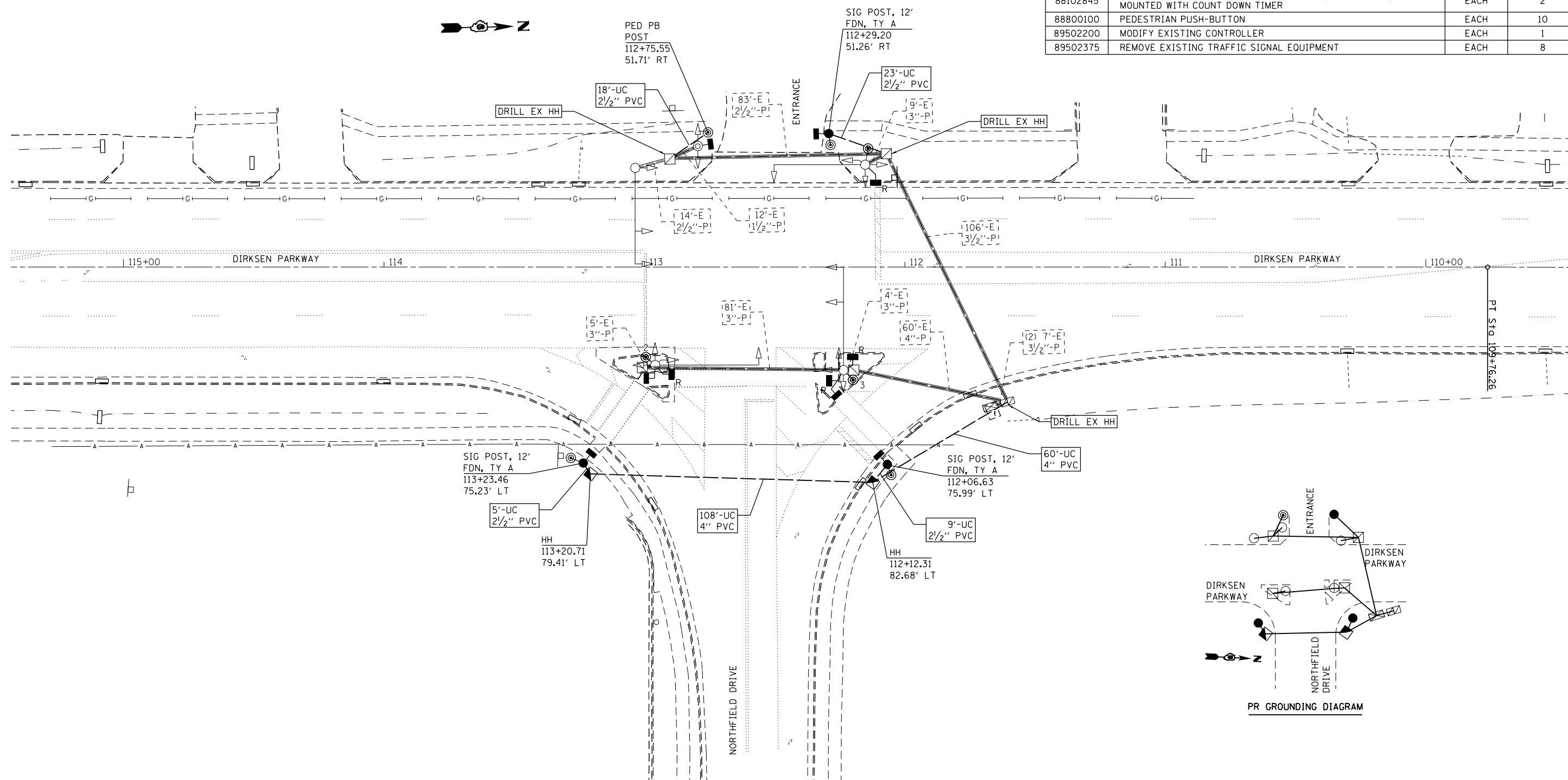
- 4 EA PEDESTRIAN SIGNAL HEAD
- 4 EA PEDESTRIAN PUSH-BUTTON

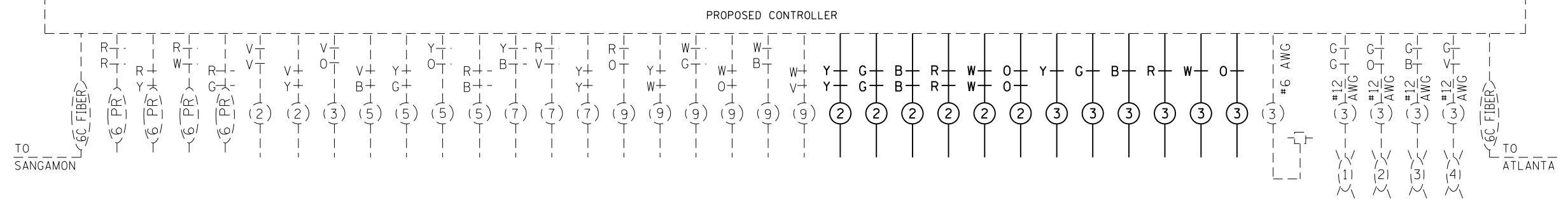
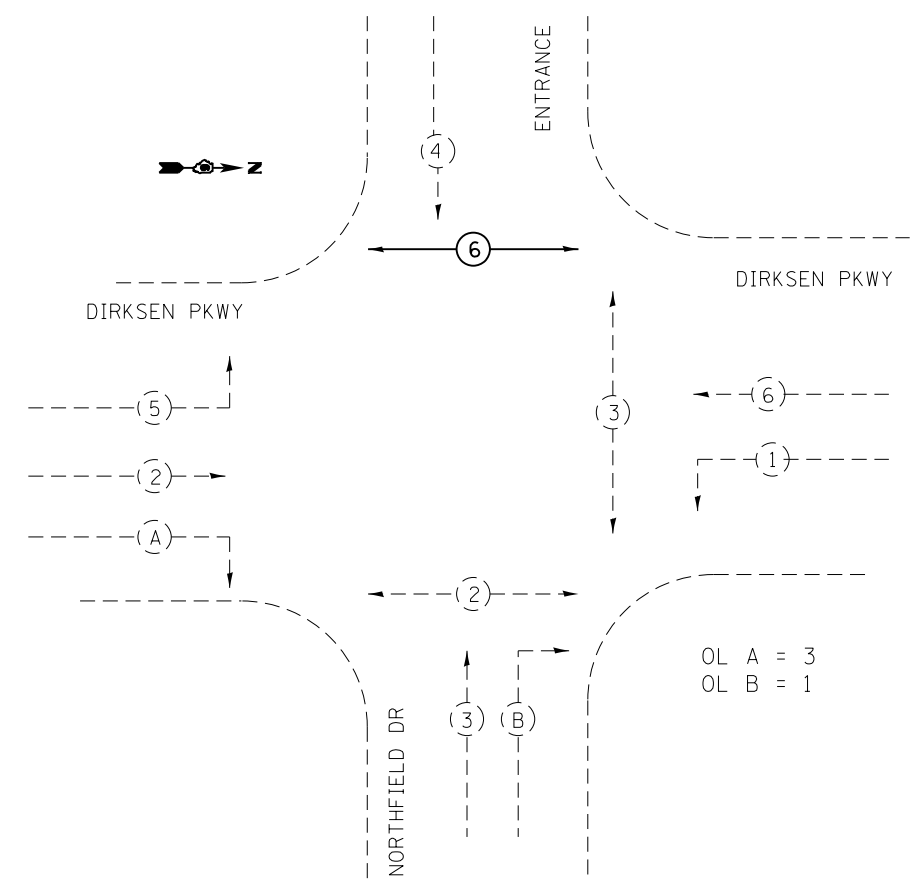
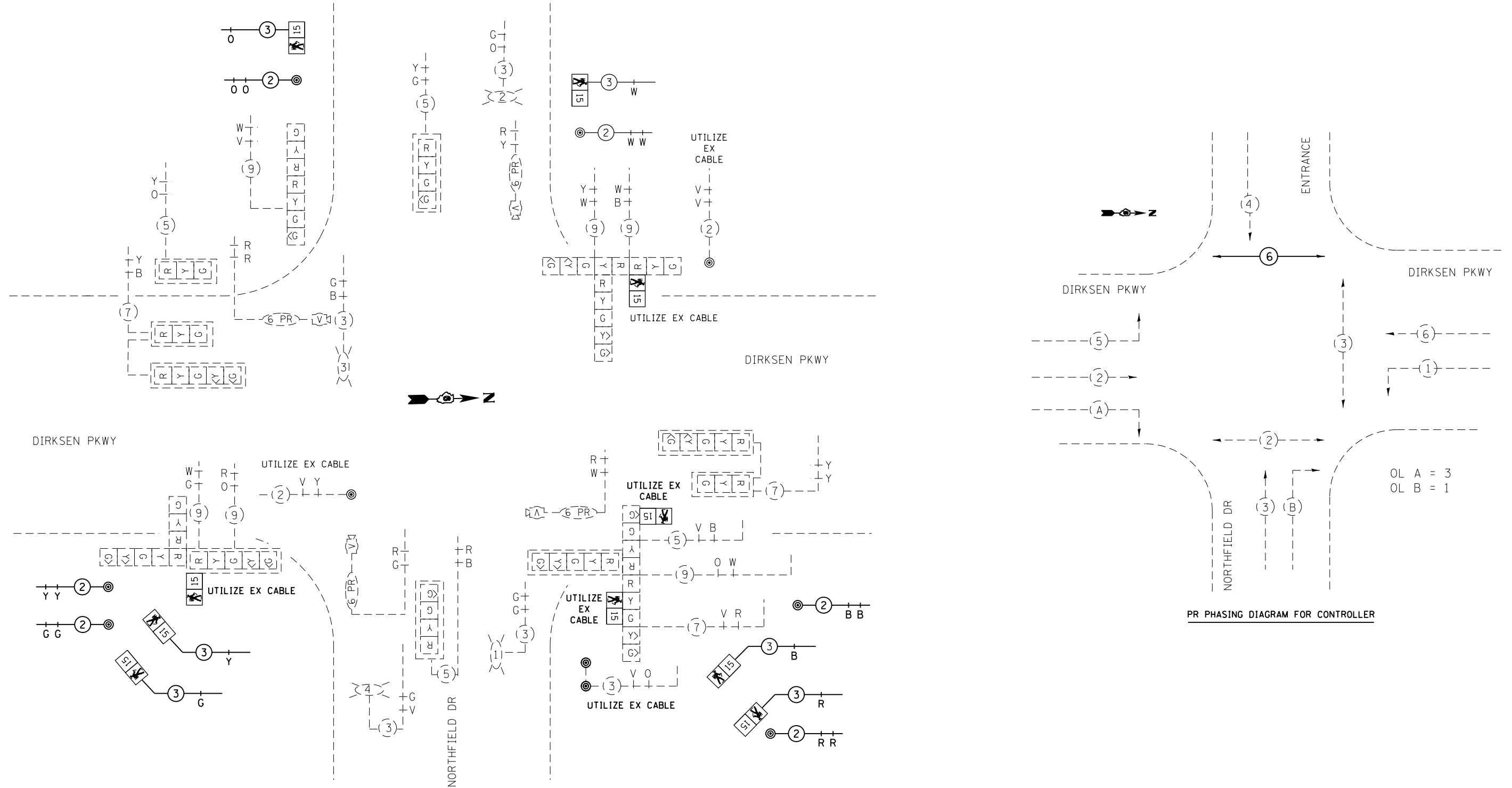
8 EA TOTAL

REMOVED TRAFFIC SIGNAL EQUIPMENT SHALL BE DISPOSED OF BY CONTRACTOR.

DIRKSEN PARKWAY & NORTHFIELD DRIVE QUANTITY:

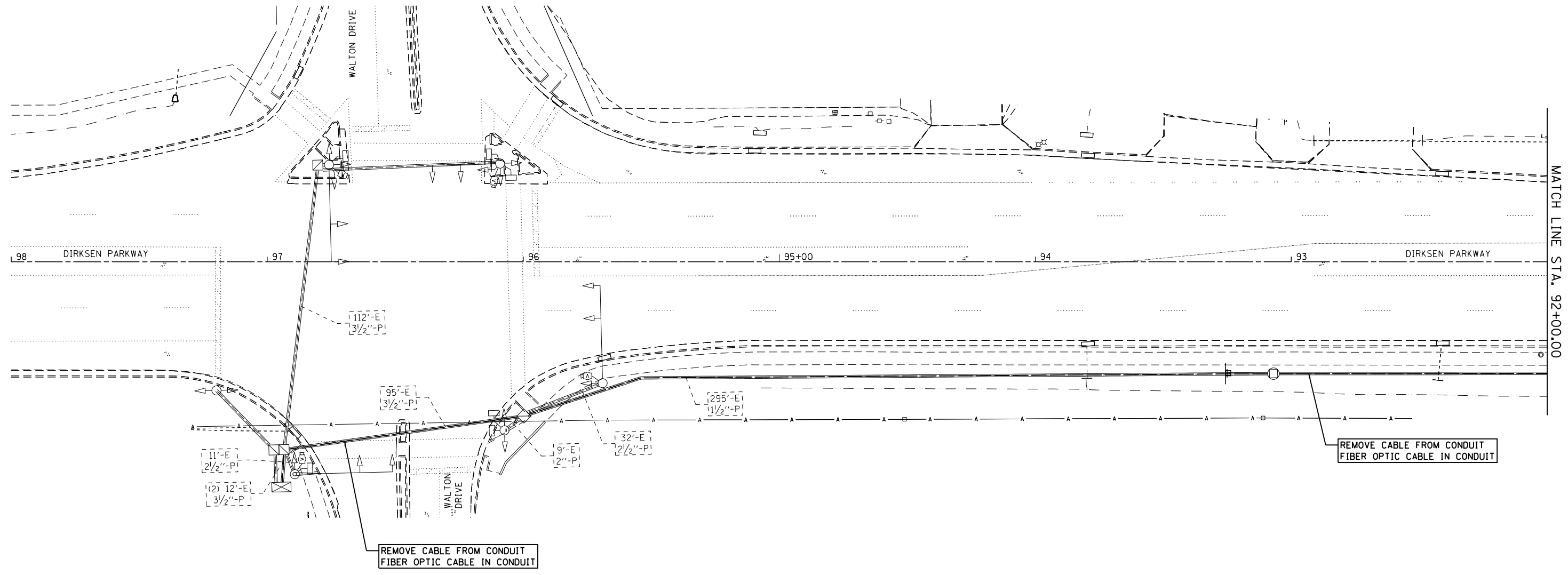
ITEM NO	ITEM	UNIT	QTY
81028360	UNDERGROUND CONDUIT, PVC, 2 1/2" DIA.	FOOT	14
81028390	UNDERGROUND CONDUIT, PVC, 4" DIA.	FOOT	168
81400100	HANDHOLE	EACH	2
85000200	MAINTENANCE OF EXISTING TRAFFIC SIGNAL INSTALLATION	EACH	1
87300010	GROUNDING EXISTING HANDHOLE FRAME AND COVER	EACH	5
87301215	ELECTRIC CABLE IN CONDUIT, SIGNAL NO. 14 2C	FOOT	1,194
87301225	ELECTRIC CABLE IN CONDUIT, SIGNAL NO. 14 3C	FOOT	1,196
87301900	ELECTRIC CABLE IN CONDUIT, EQUIPMENT GROUNDING CONDUCTOR, NO. 6 1C	FOOT	526
87502660	TRAFFIC SIGNAL POST, ALUMINUM 12 FT.	EACH	3
87601100	PEDESTRIAN PUSH-BUTTON POST, GALVANIZED STEEL, TYPE I	EACH	1
87800100	CONCRETE FOUNDATION, TYPE A	FOOT	9
87900200	DRILL EXISTING HANDHOLE	EACH	3
88102825	PEDESTRIAN SIGNAL HEAD, POLYCARBONATE, LED, 1-FACE, BRACKET MOUNTED WITH COUNT DOWN TIMER	EACH	6
88102845	PEDESTRIAN SIGNAL HEAD, POLYCARBONATE, LED, 2-FACE, BRACKET MOUNTED WITH COUNT DOWN TIMER	EACH	2
88800100	PEDESTRIAN PUSH-BUTTON	EACH	10
89502200	MODIFY EXISTING CONTROLLER	EACH	1
89502375	REMOVE EXISTING TRAFFIC SIGNAL EQUIPMENT	EACH	8





FILE NAME =	USER NAME = sparksgw	DESIGNED - DMS	REVISED -	STATE OF ILLINOIS DEPARTMENT OF TRANSPORTATION	TRAFFIC SIGNAL DETAIL DIRKSEN PARKWAY & NORTHFIELD DRIVE	F.A.P. RTE.	SECTION	COUNTY	TOTAL SHEETS	SHEET NO.
Default	PLOT SCALE = 48.0000' / in.	CHECKED -	REVISED -			668	(28)TS-3	SANGAMON	19	11
	PLOT DATE = 10/21/2014	DATE -	REVISED -			CONTRACT NO. 72H04				

ILLINOIS FED. AID PROJECT



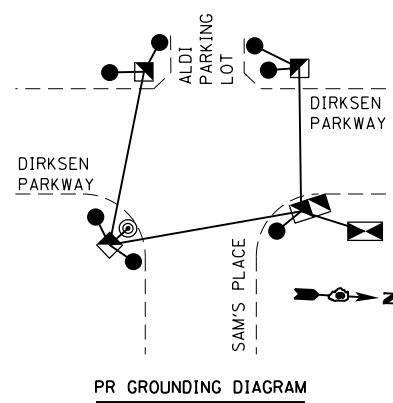
MATCH LINE STA. 92+00.00

FILE NAME = p:\11\084EBIDINTEG.illinois.gov\PIWIDOT\Documents\IDOT Offices\District 6\Projects\06724\Drawings\06724-04-sht-TS.dgn	USER NAME = sparksgw	DESIGNED - DMS	REVISED -	STATE OF ILLINOIS DEPARTMENT OF TRANSPORTATION	TRAFFIC SIGNAL PLAN INTERCONNECT				F.A.P. RTE.	SECTION	COUNTY	TOTAL SHEETS	SHEET NO.
	PLOT SCALE = 40.0000' / in.	CHECKED -	REVISED -						668	(28)TS-3	SANGAMON	19	12
Default	PLOT DATE = 10/21/2014	DATE -	REVISED -	SCALE:	SHEET	OF	SHEETS	STA.	TO	STA.	ILLINOIS FED. AID PROJECT CONTRACT NO. 72H04		

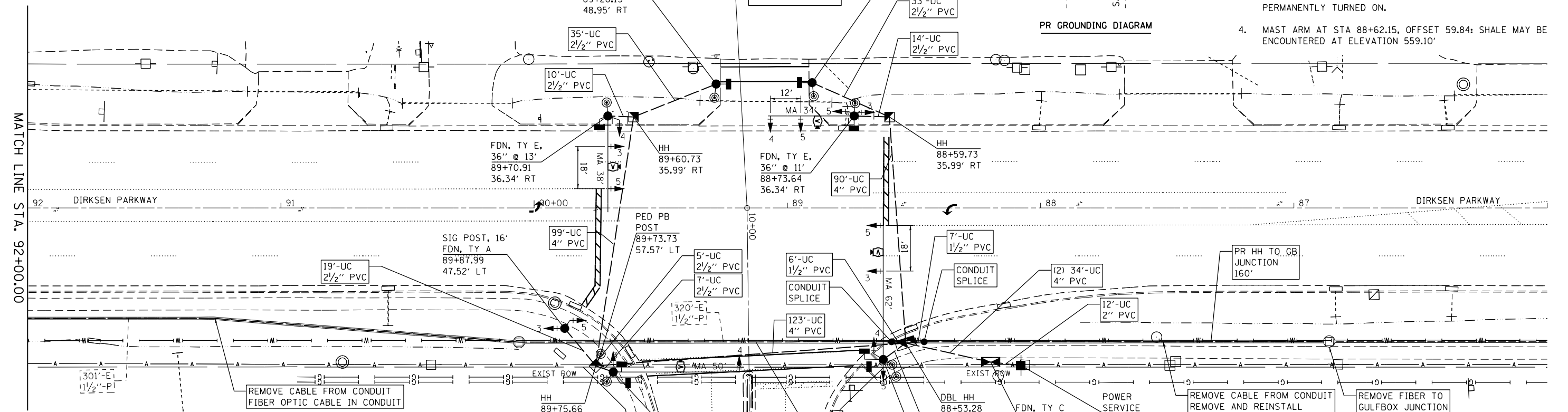
RECOMMENDED MAST ARM FOUNDATION LENGTH:

STATION	OFFSET, FT	MAST ARM LENGTH, FT	FOUNDATION DIAMETER, FT	FOUNDATION LENGTH, FT
88+62.15	59.84 LT	62	3.5	24.5
88+73.64	36.34 RT	34	3	11
89+68.79	64.81 LT	50	3	21
89+70.91	36.34 RT	38	3	12.5

IT SHALL BE NOTED THAT 34' MAST ARM AT STA 88+73.64 IS THE ONLY MAST ARM WHERE THE FOUNDATION LENGTH IS SUFFICIENT ACCORDING TO STANDARD 878001-09.



- NOTES:
- EXISTING FIBER OPTIC CABLE INTERCONNECTING WALTON DRIVE AND BISSELL/MAYDEN ROAD EXISTING CONTROLLERS SHALL BE REMOVED FROM WALTON DRIVE EXISTING CONTROLLER TO THE GULFBOX JUNCTION LOCATED AT STA. 86+97 (LT). THE SAME EXISTING FIBER OPTIC CABLE SHALL BE USED TO CONNECT BISSELL/MAYDEN ROAD CONTROLLER TO PROPOSED CONTROLLER AT SAM'S PLACE. THIS WORK SHALL BE PAID BY "REMOVE CABLE FROM CONDUIT" AND "REMOVE AND REINSTALL CABLE FROM CONDUIT" PAY ITEMS.
 - NEW FIBER OPTIC CABLE SHALL BE INSTALLED TO INTERCONNECT SAM'S PLACE AND WALTON DRIVE
 - SIGNAL HEADS SHALL BE COVERED BEFORE THEY ARE PERMANENTLY TURNED ON.
 - MAST ARM AT STA 88+62.15, OFFSET 59.84: SHALE MAY BE ENCOUNTERED AT ELEVATION 559.10'



DIRKSEN PARKWAY & SAM'S PLACE QUANTITY:

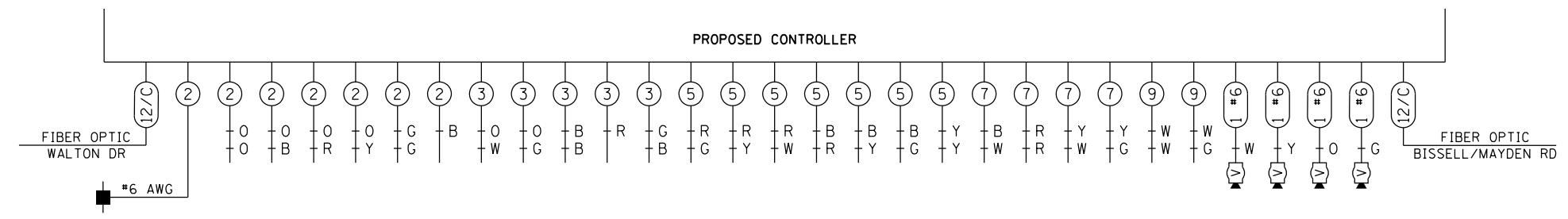
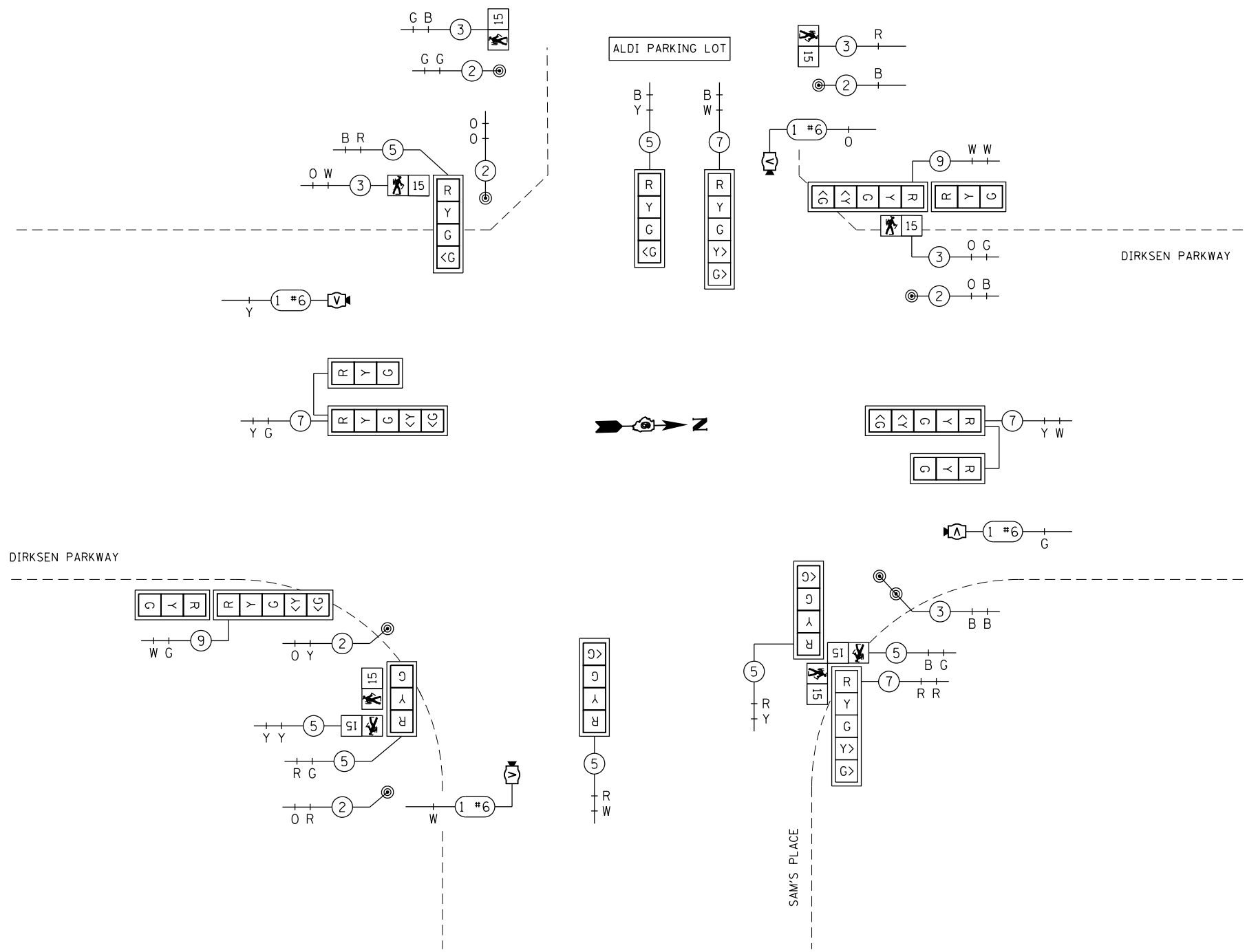
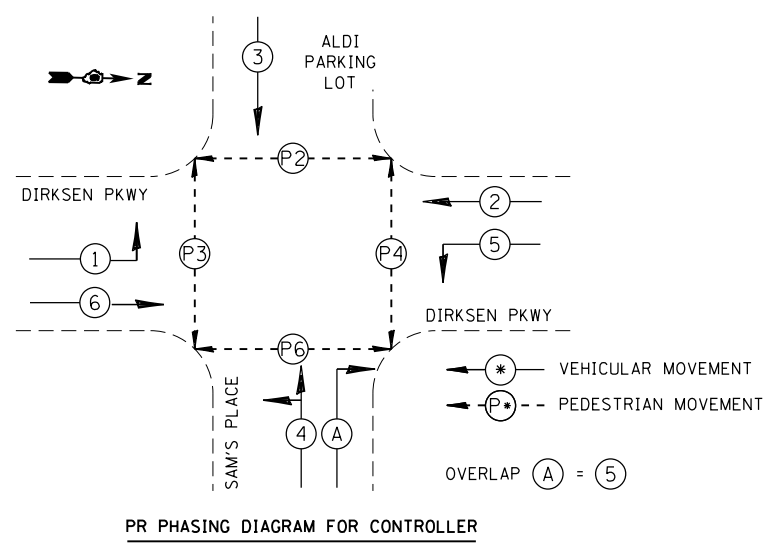
ITEM NO	ITEM	UNIT	QTY
72000100	SIGN PANEL - TYPE 1	SQ FT	15
72000200	SIGN PANEL - TYPE 2	SQ FT	44
78006100	PREFORMED THERMOPLASTIC PAVEMENT MARKING - LETTERS AND SYMBOLS	SQ FT	63
78006130	PREFORMED THERMOPLASTIC PAVEMENT MARKING - LINE 6"	FOOT	241
78006180	PREFORMED THERMOPLASTIC PAVEMENT MARKING - LINE 24"	FOOT	85
78300100	PAVEMENT MARKING REMOVAL	SQ FT	28
80500100	SERVICE INSTALLATION, TYPE A	EACH	1
81028340	UNDERGROUND CONDUIT, PVC, 1 1/2" DIA.	FOOT	13
81028350	UNDERGROUND CONDUIT, PVC, 2" DIA.	FOOT	12
81028360	UNDERGROUND CONDUIT, PVC, 2 1/2" DIA.	FOOT	132
81028390	UNDERGROUND CONDUIT, PVC, 4" DIA.	FOOT	380
81400100	HANDHOLE	EACH	3
81400300	DOUBLE HANDHOLE	EACH	1
85700200	FULL-ACTUATED CONTROLLER AND TYPE IV CABINET	EACH	1
86200200	UNINTERRUPTABLE POWER SUPPLY, STANDARD	EACH	1
86400100	TRANSCEIVER - FIBER OPTIC	EACH	1
87100140	FIBER OPTIC CABLE IN CONDUIT, NO. 62.5/125, 12F	FOOT	880
87301215	ELECTRIC CABLE IN CONDUIT, SIGNAL NO. 14 2C	FOOT	1,512
87301225	ELECTRIC CABLE IN CONDUIT, SIGNAL NO. 14 3C	FOOT	1,176
87301245	ELECTRIC CABLE IN CONDUIT, SIGNAL NO. 14 5C	FOOT	1,494
87301255	ELECTRIC CABLE IN CONDUIT, SIGNAL NO. 14 7C	FOOT	911
87301265	ELECTRIC CABLE IN CONDUIT, SIGNAL NO. 14 9C	FOOT	419
87301705	ELECTRIC CABLE IN CONDUIT, COMMUNICATION NO. 18 3 PAIR	FOOT	1,040
87301805	ELECTRIC CABLE IN CONDUIT, SERVICE, NO. 6 2 C	FOOT	35
87301900	ELECTRIC CABLE IN CONDUIT, EQUIPMENT GROUNDING CONDUCTOR, NO. 6 1C	FOOT	537
87502660	TRAFFIC SIGNAL POST, ALUMINUM 12 FT.	EACH	2
87502700	TRAFFIC SIGNAL POST, ALUMINUM 16 FT.	EACH	1

87601100	PEDESTRIAN PUSH-BUTTON POST, GALVANIZED STEEL, TYPE I	EACH	1
87700210	STEEL MAST ARM ASSEMBLY AND POLE, 34 FT.	EACH	1
87700230	STEEL MAST ARM ASSEMBLY AND POLE, 38 FT.	EACH	1
87700290	STEEL MAST ARM ASSEMBLY AND POLE, 50 FT.	EACH	1
87700404	STEEL MAST ARM ASSEMBLY AND POLE, 62 FT.	EACH	1
87800100	CONCRETE FOUNDATION, TYPE A	FOOT	9
87800150	CONCRETE FOUNDATION, TYPE C	FOOT	3
87800415	CONCRETE FOUNDATION, TYPE E 36-INCH DIAMETER	FOOT	45
87800420	CONCRETE FOUNDATION, TYPE E 42-INCH DIAMETER	FOOT	25
88040070	SIGNAL HEAD, POLYCARBONATE, LED, 1-FACE, 3-SECTION, BRACKET MOUNTED	EACH	1
88040090	SIGNAL HEAD, POLYCARBONATE, LED, 1-FACE, 3-SECTION, MAST ARM MOUNTED	EACH	2
88040110	SIGNAL HEAD, POLYCARBONATE, LED, 1-FACE, 4-SECTION, BRACKET MOUNTED	EACH	1
88040120	SIGNAL HEAD, POLYCARBONATE, LED, 1-FACE, 4-SECTION, MAST ARM MOUNTED	EACH	2
88040160	SIGNAL HEAD, POLYCARBONATE, LED, 1-FACE, 5-SECTION, MAST ARM MOUNTED	EACH	3
88040260	SIGNAL HEAD, POLYCARBONATE, LED, 2-FACE, 1-3-SECTION, 1-5-SECTION, BRACKET MOUNTED	EACH	2
88040280	SIGNAL HEAD, POLYCARBONATE, LED, 2-FACE, 1-4 SECTION, 1-5 SECTION, BRACKET MOUNTED	EACH	1
88102825	PEDESTRIAN SIGNAL HEAD, POLYCARBONATE, LED, 1-FACE, BRACKET MOUNTED WITH COUNT DOWN TIMER	EACH	4
88102845	PEDESTRIAN SIGNAL HEAD, POLYCARBONATE, LED, 2-FACE, BRACKET MOUNTED WITH COUNT DOWN TIMER	EACH	2
88200510	TRAFFIC SIGNAL BACKPLATE, RETROREFLECTIVE	EACH	15
88800100	PEDESTRIAN PUSH-BUTTON	EACH	8
89502300	REMOVE ELECTRIC CABLE FROM CONDUIT	FOOT	1,059
89502350	REMOVE AND REINSTALL ELECTRIC CABLE FROM CONDUIT	FOOT	228
Z0010688	CAMERA MOUNTING ASSEMBLY	EACH	4
Z0033072	VIDEO VEHICLE DETECTION SYSTEM	EACH	1

FILE NAME =	USER NAME = shahdm	DESIGNED - DMS	REVISED -
es:\pw\work\p\dot\shahdm\d8388524\0672104-shd-TS1.dgn		DRAWN - DMS	REVISED -
Default	PLOT SCALE = 40.0000' / in.	CHECKED -	REVISED -
	PLOT DATE = Oct-31-2014 09:22:30AM	DATE -	REVISED -

STATE OF ILLINOIS
DEPARTMENT OF TRANSPORTATION

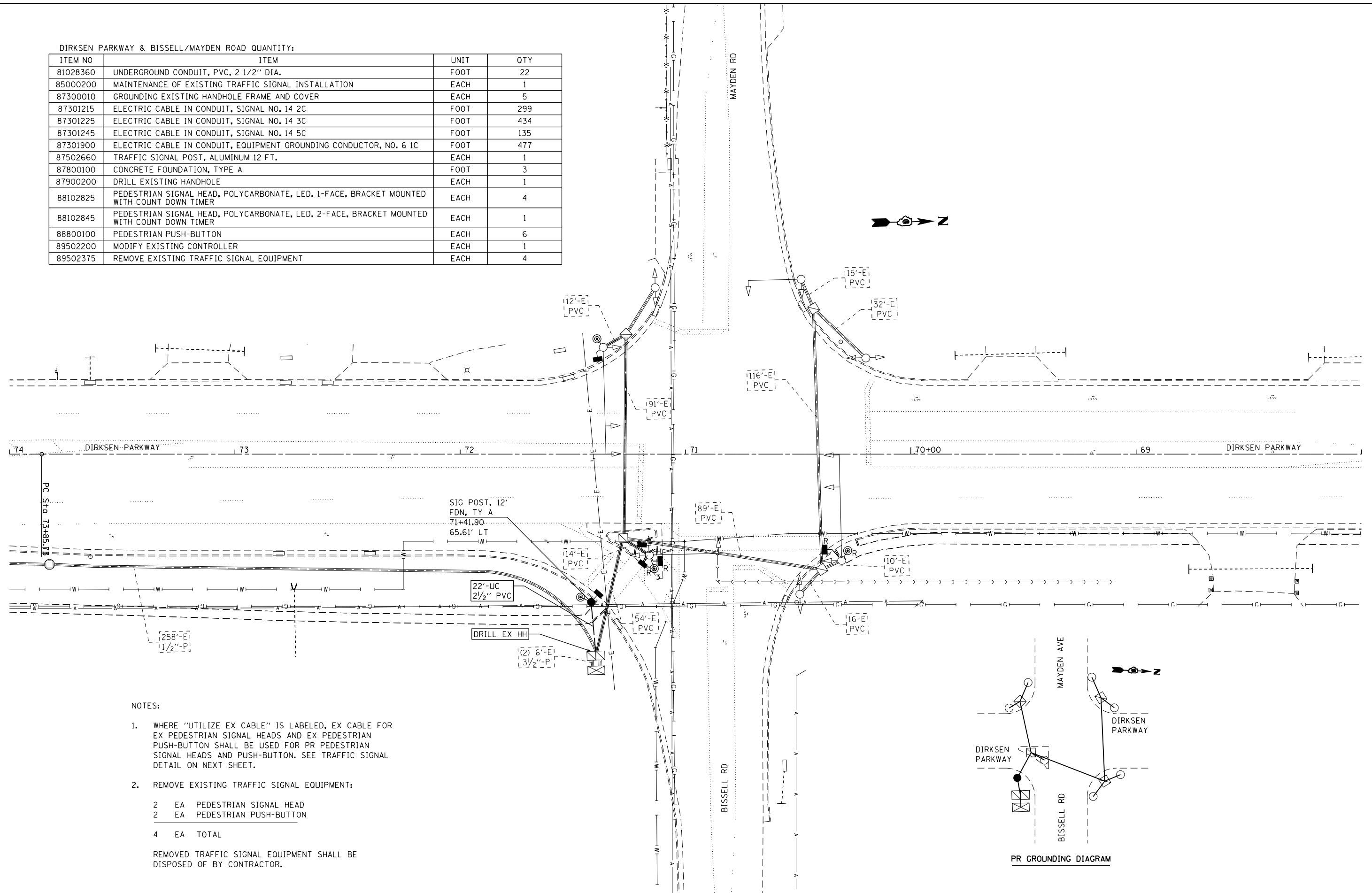
TRAFFIC SIGNAL PLAN		F.A.P. RTE.	SECTION	COUNTY	TOTAL SHEETS	SHEET NO.
DIRKSEN PARKWAY & SAM'S PLACE		668	(2B)TS-3	SANGAMON	19	13
SCALE:		SHEET OF SHEETS		STA. TO STA.	CONTRACT NO. 72H04	
				ILLINOIS FED. AID PROJECT		



FILE NAME =	USER NAME = sparksgw	DESIGNED - DMS	REVISED -	STATE OF ILLINOIS DEPARTMENT OF TRANSPORTATION	TRAFFIC SIGNAL DETAIL DIRKSEN PARKWAY & SAM'S PLACE			F.A.P. RTE.	SECTION	COUNTY	TOTAL SHEETS	SHEET NO.
pw:\11084EBIDINTEG.illinois.gov\PIWIDOT\Documents\IDOT Offices\District 6\Projects\D6724\Drawings\EA0sh\DMS\672404-sht-TS.dgn	DRAWN	CHECKED	REVISED					668	(28)TS-3	SANGAMON	19	14
Default	PLOT SCALE = 40.0000' / in.	DATE	REVISED		CONTRACT NO. 72H04			ILLINOIS FED. AID PROJECT				
	PLOT DATE = 10/21/2014				SCALE:	SHEET	OF SHEETS	STA.	TO STA.			

DIRKSEN PARKWAY & BISSELL/MAYDEN ROAD QUANTITY:

ITEM NO	ITEM	UNIT	QTY
81028360	UNDERGROUND CONDUIT, PVC, 2 1/2" DIA.	FOOT	22
85000200	MAINTENANCE OF EXISTING TRAFFIC SIGNAL INSTALLATION	EACH	1
87300010	GROUNDING EXISTING HANDHOLE FRAME AND COVER	EACH	5
87301215	ELECTRIC CABLE IN CONDUIT, SIGNAL NO. 14 2C	FOOT	299
87301225	ELECTRIC CABLE IN CONDUIT, SIGNAL NO. 14 3C	FOOT	434
87301245	ELECTRIC CABLE IN CONDUIT, SIGNAL NO. 14 5C	FOOT	135
87301900	ELECTRIC CABLE IN CONDUIT, EQUIPMENT GROUNDING CONDUCTOR, NO. 6 1C	FOOT	477
87502660	TRAFFIC SIGNAL POST, ALUMINUM 12 FT.	EACH	1
87800100	CONCRETE FOUNDATION, TYPE A	FOOT	3
87900200	DRILL EXISTING HANDHOLE	EACH	1
88102825	PEDESTRIAN SIGNAL HEAD, POLYCARBONATE, LED, 1-FACE, BRACKET MOUNTED WITH COUNT DOWN TIMER	EACH	4
88102845	PEDESTRIAN SIGNAL HEAD, POLYCARBONATE, LED, 2-FACE, BRACKET MOUNTED WITH COUNT DOWN TIMER	EACH	1
88800100	PEDESTRIAN PUSH-BUTTON	EACH	6
89502200	MODIFY EXISTING CONTROLLER	EACH	1
89502375	REMOVE EXISTING TRAFFIC SIGNAL EQUIPMENT	EACH	4

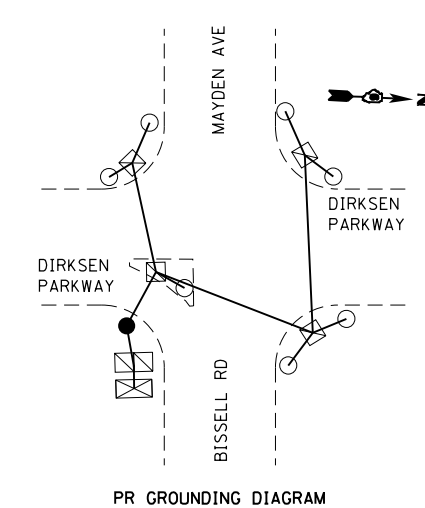


NOTES:

- WHERE "UTILIZE EX CABLE" IS LABELED, EX CABLE FOR EX PEDESTRIAN SIGNAL HEADS AND EX PEDESTRIAN PUSH-BUTTON SHALL BE USED FOR PR PEDESTRIAN SIGNAL HEADS AND PUSH-BUTTON. SEE TRAFFIC SIGNAL DETAIL ON NEXT SHEET.
- REMOVE EXISTING TRAFFIC SIGNAL EQUIPMENT:

2	EA	PEDESTRIAN SIGNAL HEAD
2	EA	PEDESTRIAN PUSH-BUTTON
4	EA	TOTAL

REMOVED TRAFFIC SIGNAL EQUIPMENT SHALL BE DISPOSED OF BY CONTRACTOR.



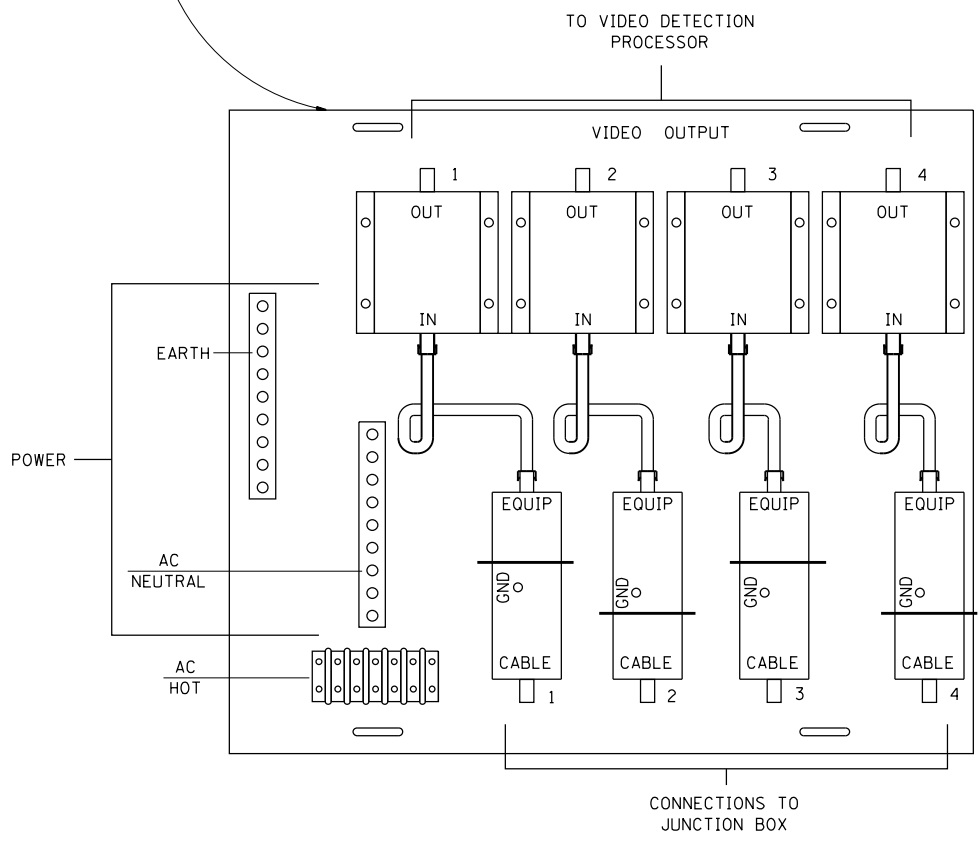
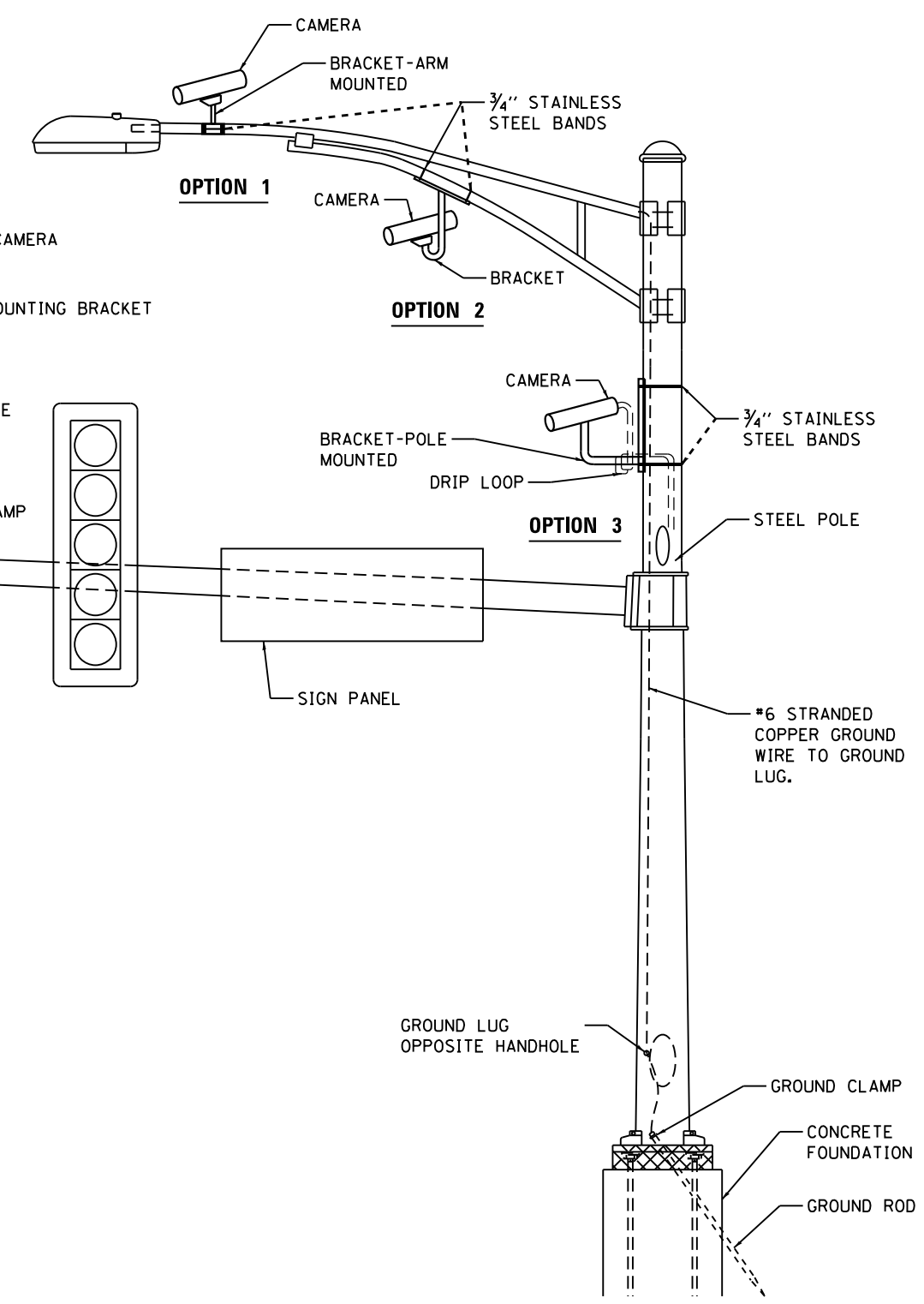
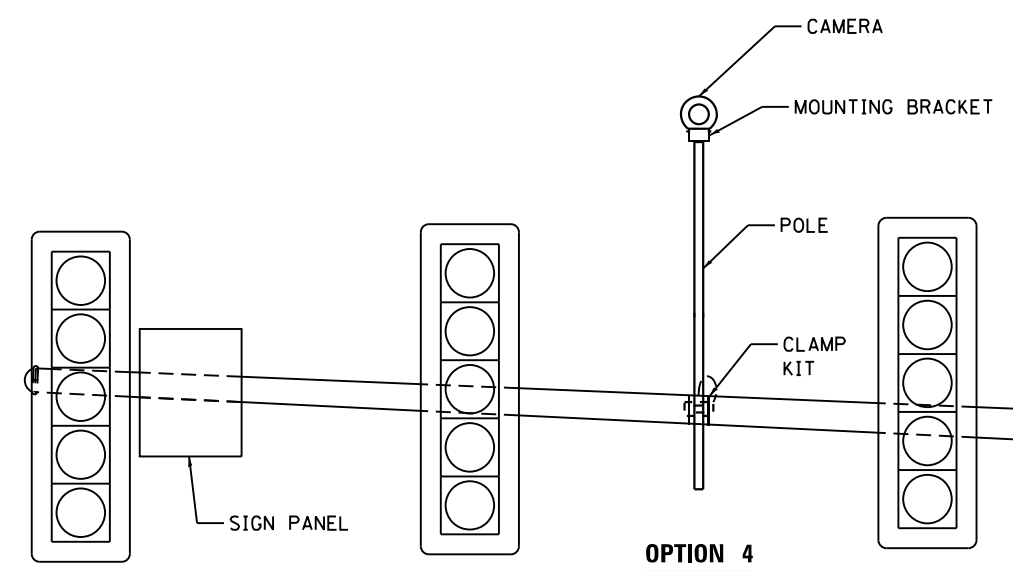
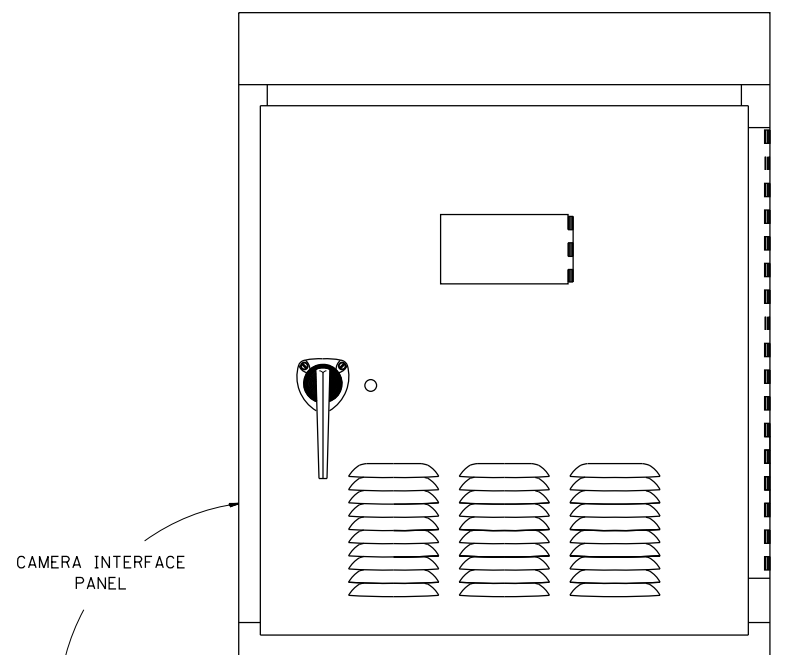
FILE NAME =	USER NAME = sparksgr	DESIGNED - DMS	REVISED -
pw\11084EBIDINTEG.illinois.gov\PIWIDT\Documents\DOT Offices\District 6\Projects\06724\DRAWING\DATA\EA0sh\DMS\06724\04-sht-TS.dgn		REVISIONS	REVISED -
Default	PLOT SCALE = 40.0000' / in.	CHECKED -	REVISED -
	PLOT DATE = 10/21/2014	DATE -	REVISED -

STATE OF ILLINOIS
DEPARTMENT OF TRANSPORTATION

TRAFFIC SIGNAL PLAN
DIRKSEN PARKWAY & BISSELL RD/MAYDEN AVE

SCALE: SHEET OF SHEETS STA. TO STA.

F.A.P. RTE.	SECTION	COUNTY	TOTAL SHEETS	SHEET NO.
668	(28)TS-3	SANGAMON	19	15
CONTRACT NO. 72H04			ILLINOIS FED. AID PROJECT	



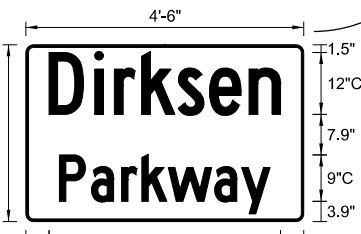
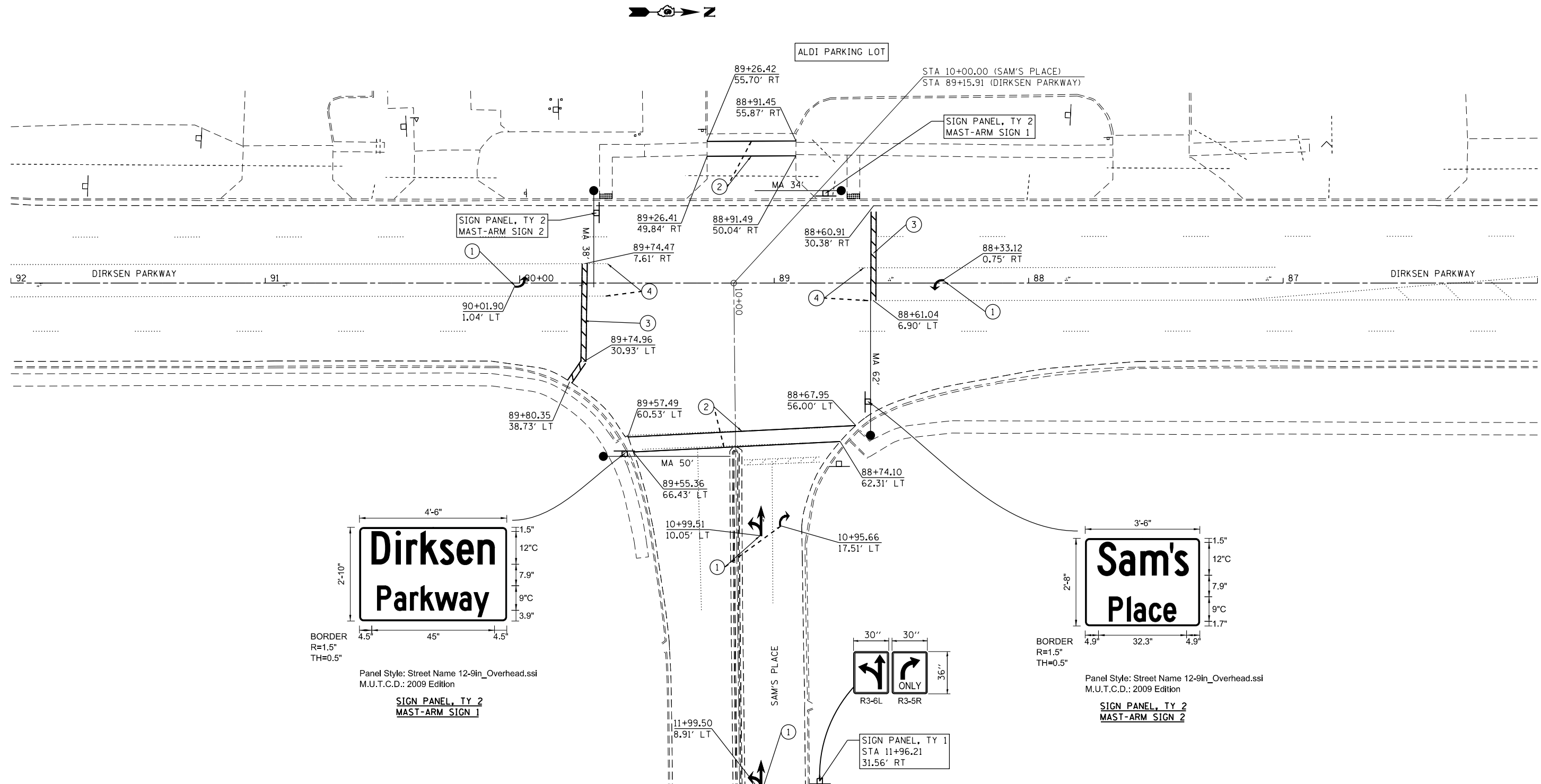
**VIDEO DETECTION SYSTEM INSTALLATION
ARM MOUNTED, MAST-ARM MOUNTED, OR POLE MOUNTED**

FILE NAME =	USER NAME = sparksgw	DESIGNED -	REVISED - WCD 10-31-1997	STATE OF ILLINOIS DEPARTMENT OF TRANSPORTATION	DISTRICT SIX VIDEO DETECTION SYSTEM INSTALLATION DETAIL	F.A.P. R.T.E.	SECTION	COUNTY	TOTAL SHEETS	SHEET NO.	
pw:\IL084EBIDINTEG.illinois.gov\PI\DOT\Documents\DOT Offices\District 6\Projects\0672\Drawings\EA\084EBID-2014\15.dwg	DRAWN - DMS 10-06-2014	CHECKED -	REVISED - DMS 10-06-2014			668	(28)TS-3	SANGAMON	19	17	
Default	PLOT SCALE = 48.0000' / in.	DATE -	REVISED -			CONTRACT NO. 72H04					
	PLOT DATE = 10/21/2014		REVISED -			ILLINOIS FED. AID PROJECT					
				SCALE:	SHEET	OF	SHEETS	STA.	TO	STA.	

PAVEMENT MARKING AND ROADWAY SIGNING QUANTITY, DIRKSEN PARKWAY & SAM'S PLACE:

ITEM NO	ITEM	UNIT	QTY
72000100	SIGN PANEL - TYPE 1	SQ FT	15
72000200	SIGN PANEL - TYPE 2	SQ FT	44
78006100	PREFORMED THERMOPLASTIC PAVEMENT MARKING - LETTERS AND SYMBOLS	SQ FT	63
78006130	PREFORMED THERMOPLASTIC PAVEMENT MARKING - LINE 6"	FOOT	241
78006180	PREFORMED THERMOPLASTIC PAVEMENT MARKING - LINE 24"	FOOT	85
78300100	PAVEMENT MARKING REMOVAL	SQ FT	28

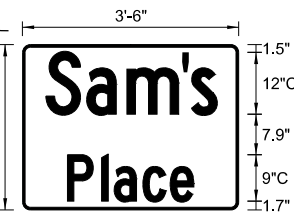
LEGEND	
①	PREFORMED THERMOPLASTIC PAVEMENT MARKING - LETTERS AND SYMBOLS
②	PREFORMED THERMOPLASTIC PAVEMENT MARKING - LINE 6"
③	PREFORMED THERMOPLASTIC PAVEMENT MARKING - LINE 24"
④	PAVEMENT MARKING REMOVAL



BORDER
R=1.5"
TH=0.5"

Panel Style: Street Name 12-9in_Overhead.ssi
M.U.T.C.D.: 2009 Edition

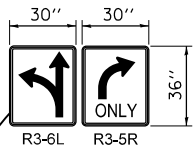
**SIGN PANEL, TY 2
MAST-ARM SIGN 1**



BORDER
R=1.5"
TH=0.5"

Panel Style: Street Name 12-9in_Overhead.ssi
M.U.T.C.D.: 2009 Edition

**SIGN PANEL, TY 2
MAST-ARM SIGN 2**



**SIGN PANEL, TY 1
STA 11+96.21
31.56' RT**

