

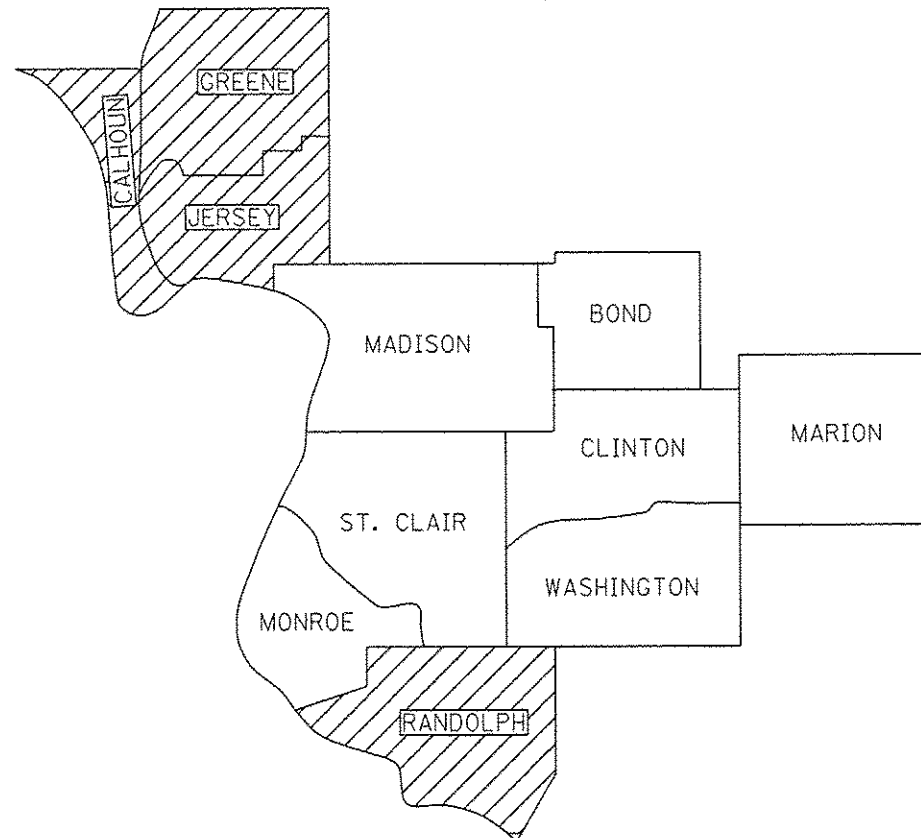
03-06-2015 LETTING ITEM 128

STATE OF ILLINOIS
DEPARTMENT OF TRANSPORTATION
DIVISION OF HIGHWAYS

**PROPOSED
HIGHWAY PLANS**

VARIOUS ROUTES
SECTION DIST. 8 STC 2015-1
SMART TRAFFIC MONITORING SYSTEM
IN VARIOUS LOCATIONS
VARIOUS COUNTIES
PROJECT ACHSIP-000V(013)

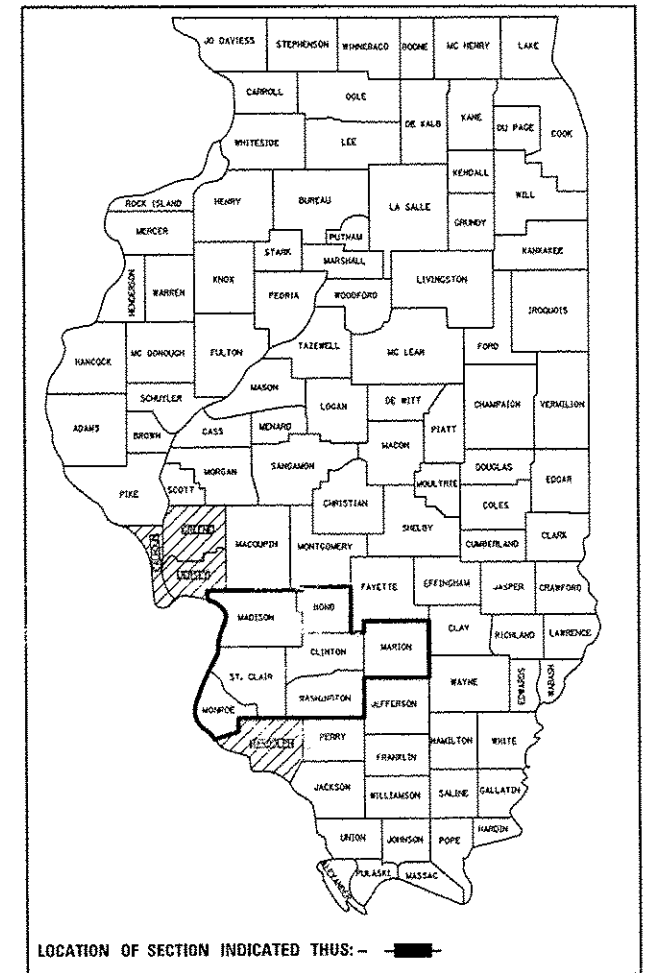
C-98-020-15



***NOTE:**
WORK CAN BE LOCATED IN
ANY NON-HATCHED COUNTIES
WITHIN DISTRICT 8, REGION 5.

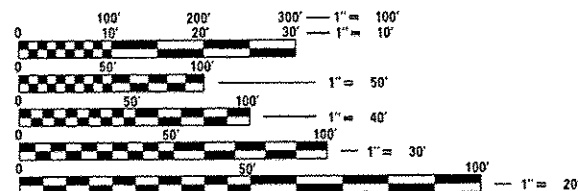
F.A. RTE.	SECTION	COUNTY	TOTAL SHEETS	SHEET NO.
VAR	DIST. 8 STC 2015-1	VARIOUS	4	1
		ILLINOIS	CONTRACT NO. 76H67	

D-98-024-15



INDEX OF SHEETS

- 1-COVER SHEET
- 2-GENERAL NOTES/STANDARDS
- 3-SUMMARY OF QUANTITIES
- 4-DETAIL SHEET



FULL SIZE PLANS HAVE BEEN PREPARED USING STANDARD ENGINEERING SCALES. REDUCED SIZED PLANS WILL NOT CONFORM TO STANDARD SCALES. IN MAKING MEASUREMENTS ON REDUCED PLANS, THE ABOVE SCALES MAY BE USED.

J.U.L.I.E.
JOINT UTILITY LOCATION INFORMATION FOR EXCAVATION
1-800-892-0123
OR 811

PROJECT ENGINEER: MIKE PRITCHETT 618-346-3180
PROJECT MANAGER: CHAD SANDERS 618-346-3264

CONTRACT NO. 76H67

STATE OF ILLINOIS
DEPARTMENT OF TRANSPORTATION
DIVISION OF HIGHWAYS

SUBMITTED *Oct 28 2014*

William L. Roman
DEPUTY DIRECTOR OF HIGHWAYS, REGION ENGINEER

Jan 30 2015
John D. Baranzoli, P.E.
ENGINEER OF DESIGN AND ENVIRONMENT

Jan 30 2015
Omer Osman, P.E.
DIRECTOR OF HIGHWAYS, CHIEF ENGINEER

**PRINTED BY THE AUTHORITY
OF THE STATE OF ILLINOIS**

STANDARDS

NUMBERS

701101-04
701901-04
701428

DESCRIPTIONS

OFF ROAD OPERATIONS, MULTI-LANE, 15' TO 24" FROM PAVEMENT EDGE
TRAFFIC CONTROL DEVICES
TRAFFIC CONTROL, SETUP AND REMOVAL, FREEWAY/EXPRESSWAY

GENERAL NOTES

1. THE LOCATIONS OF THE DELIVERY, SETUP, MAINTENANCE, AND REMOVAL OF THE SMART TRAFFIC MONITORING SYSTEM SHALL BE DETERMINED BY THE DISTRICT 8 TRAFFIC MANAGEMENT CENTER (618-346-3233).
2. ILLINOIS STATE LAW REQUIRES A 48-HOUR NOTICE TO BE GIVEN TO UTILITIES BEFORE DIGGING. FIELD MARKING OF FACILITIES MAY BE OBTAINED BY CONTACTING J.U.L.I.E. (PHONE: 800 892-0123) OR FOR NON-MEMBER, THE UTILITY COMPANY DIRECTLY.
3. A FLAGGER SHALL BE REQUIRED AT ALL TIMES WHEN WORKERS OR EQUIPMENT ARE ENCROACHING ON THE LANE OF TRAFFIC.
4. UTILITY INTERFERENCES ARE NOT ANTICIPATED ON THIS CONTRACT. IT SHALL BE THE CONTRACTOR'S RESPONSIBILITY TO COORDINATE THEIR CONSTRUCTION ACTIVITIES WITH THE VARIOUS UTILITY OWNERS. ALL POTENTIAL CONFLICTS SHALL BE INVESTIGATED AND REMEDIAL ACTION TAKEN PRIOR TO INTERRUPTION OF THE CONTRACTOR'S PROGRESS. NO ADDITIONAL COST SHALL BE ADDED TO THE CONTRACT RESULTING FROM UTILITY CONFLICTS.
5. ANY CALL OUT MAY BE CANCELLED AT THE DEPARTMENT'S DISCRETION.

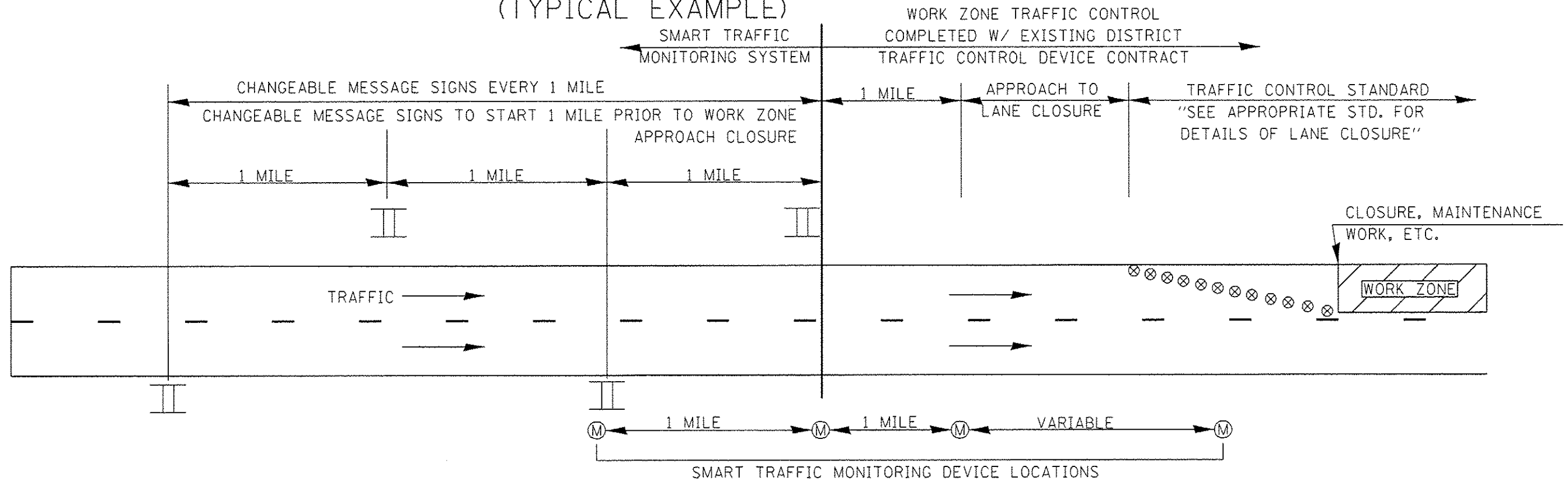
FILE NAME =	USER NAME = e1fordb	DESIGNED -	REVISED -	STATE OF ILLINOIS DEPARTMENT OF TRANSPORTATION	GENERAL NOTES AND STANDARDS	F.A. RTE.	SECTION	COUNTY	TOTAL SHEETS	SHEET NO.	
a:\p\work\p\std\alfordb\0416999\07567\std\pln\dgn	67\std\pln\dgn	DRAWN -	REVISED -			VAR	DIST. 8 STC 2015-1	VARIOUS	4	2	
PLOT SCALE = 100.0000' / 1" =	CHECKED -	REVISED -				SCALE: SHEET NO. OF SHEETS STA. TO STA.		FED. ROAD DIST. NO. ILLINOIS FED. AID PROJECT			
PLOT DATE = 10/24/2014	DATE -	REVISED -				CONTRACT NO. 76H67					

SUMMARY OF QUANTITIES

SUMMARY OF QUANTITIES			TOTAL QUANTITIES	CONSTRUCTION TYPE CODE			SUMMARY OF QUANTITIES			TOTAL QUANTITIES	CONSTRUCTION TYPE CODE		
CODE NO	ITEM	UNIT		90/10 0021	FED/ST		CODE NO	ITEM	UNIT		CODE	CODE	
X7010237	CHANGEABLE MESSAGE SIGN, SPECIAL	CAL DAY	210	210									
Z0008759	CALL OUT	EACH	15	15									
X8570001	SMART TRAFFIC MONITORING SYSTEM	CAL DAY	210	210									

3

SMART TRAFFIC MONITORING SYSTEM (CALL-OUT) (TYPICAL EXAMPLE)



***NOTES:**

- ① ACTUAL LOCATION OF SMART MONITORING DEVICES SHALL BE BASED ON MANUFACTURER'S SPECIFICATIONS AND RECOMMENDATIONS ALONG WITH THE SPECIAL PROVISIONS AND AS DIRECTED BY THE ENGINEER.
- ② MAX OF 2 DEPLOYMENTS CAN BE USED DURING CONTRACT AT ONE TIME.
- ③ MODIFICATIONS MAY BE NECESSARY TO ACCOMODATE SPECIFIC CLOSURES. ALL CHANGES WILL BE APPROVED BY THE ENGINEER.

LEGEND	
II	CHANGEABLE MESSAGE SIGN LOCATIONS
M	SMART TRAFFIC MONITORING DEVICE LOCATION
X	DRUM/BARRICADES PER APP. STANDARD (BY OTHERS)

FILE NAME =	USER NAME = alfordb	DESIGNED -	REVISED -	STATE OF ILLINOIS DEPARTMENT OF TRANSPORTATION	SMART TRAFFIC MONITORING SYSTEM (EMERGENCY CALL-OUT) (TYPICAL EXAMPLE)	VAR. RTE.	SECTION	COUNTY	TOTAL SHEETS	SHEET NO.	
ot\p\work\sp\dot\alfordb\0416999\087667\st-pln.dgn		DRAWN -	REVISED -			VAR.	DIST. B STC 2015-1	VARIOUS	4	4	
		CHECKED -	REVISED -			SCALE:		SHEET NO. OF SHEETS		STA. TO STA.	
		DATE -	REVISED -			FED. ROAD DIST. NO.		ILLINOIS FED. AID PROJECT			
		PLOT DATE = 10/24/2014		CONTRACT NO. 76H67							