

T.R.	SECTION	COUNTY	TOTAL SHEETS	SHEET NO.
207	10-08125-01-BR	LIVINGSTON	21	1
FED. ROAD DIST. NO.		ILLINOIS	CONTRACT NO. 87589	

INDEX OF SHEETS

- 1 COVER SHEET
- 2 GENERAL NOTES, COMMITMENTS AND TYPICAL CROSS SECTIONS
- 3 SUMMARY OF QUANTITIES
- 4 SCHEDULE OF QUANTITIES
- 5 ALIGNMENT, SURVEY TIES AND BENCHMARKS
- 6 PLAN AND PROFILE SHEET
- 7 EROSION CONTROL PLAN
- 8-19 STRUCTURE PLANS S.N. 053-5533
- 20-21 CROSS SECTIONS

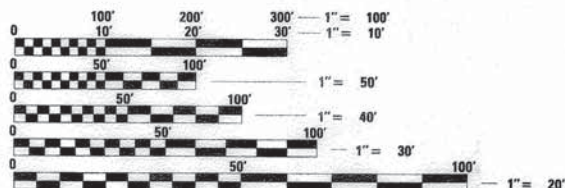
HIGHWAY STANDARD DETAILS

- 000001-06 STANDARD SYMBOLS, ABBREVIATIONS AND PATTERNS
- 001001-02 AREAS OF REINFORCEMENT BARS
- 001006 DECIMAL OF AN INCH AND OF A FOOT
- 280001-07 TEMPORARY EROSION CONTROL SYSTEMS
- 515001-03 NAME PLATE FOR BRIDGES
- 601101-01 CONCRETE HEADWALL FOR PIPE DRAIN
- 701901-04 TRAFFIC CONTROL DEVICES
- B.L.R. 21-9 TYPICAL APPLICATION OF TRAFFIC CONTROL DEVICES FOR CONSTRUCTION ON RURAL LOCAL HIGHWAYS
- B.L.R. 27-1 TRAFFIC BARRIER TERMINAL, TYPE 5A

UTILITIES:

POWER - AMEREN (ILLINOIS POWER)
TELEPHONE - FRONTIER

FUNCTIONAL CLASSIFICATION: LOCAL ROAD (NON-URBAN)
DESIGN SPEED: 30 MPH
DESIGN TRAFFIC: 0-250
% TRUCKS: 0.0
% PASSENGER VEHICLES: 100.0



FULL SIZE PLANS HAVE BEEN PREPARED USING STANDARD ENGINEERING SCALES. REDUCED SIZED PLANS WILL NOT CONFORM TO STANDARD SCALES. IN MAKING MEASUREMENTS ON REDUCED PLANS, THE ABOVE SCALES MAY BE USED.

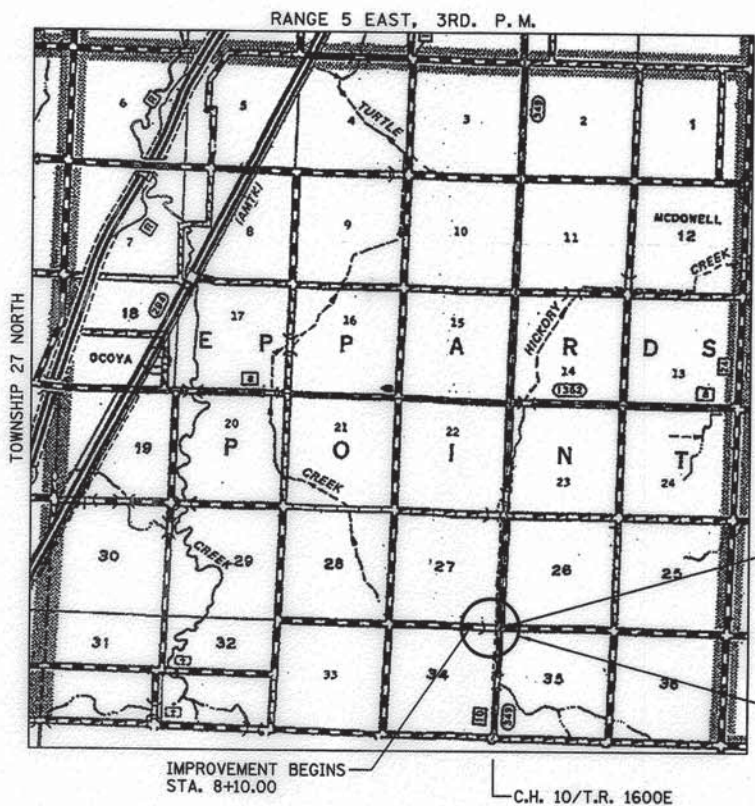
J.U.L.I.E.
JOINT UTILITY LOCATION INFORMATION FOR EXCAVATION
1-800-892-0123
OR 811

JOB NUMBER C-93-079-14
CONTRACT NUMBER 87589
CONSTRUCTION TYPE CODE: ROADWAY: 0004
BRIDGE: 0011

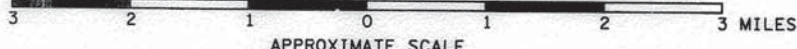
DEPARTMENT OF TRANSPORTATION
DIVISION OF HIGHWAYS

**PLANS FOR PROPOSED
SURFACE TRANSPORTATION
PROGRAM - BRIDGE**

LIVINGSTON COUNTY
EPPARDS POINT ROAD DISTRICT
SECTION 10-08125-01-BR
PROJECT NO. BROS-0105(059)
ROUTE: T.R. 207 (1000N)

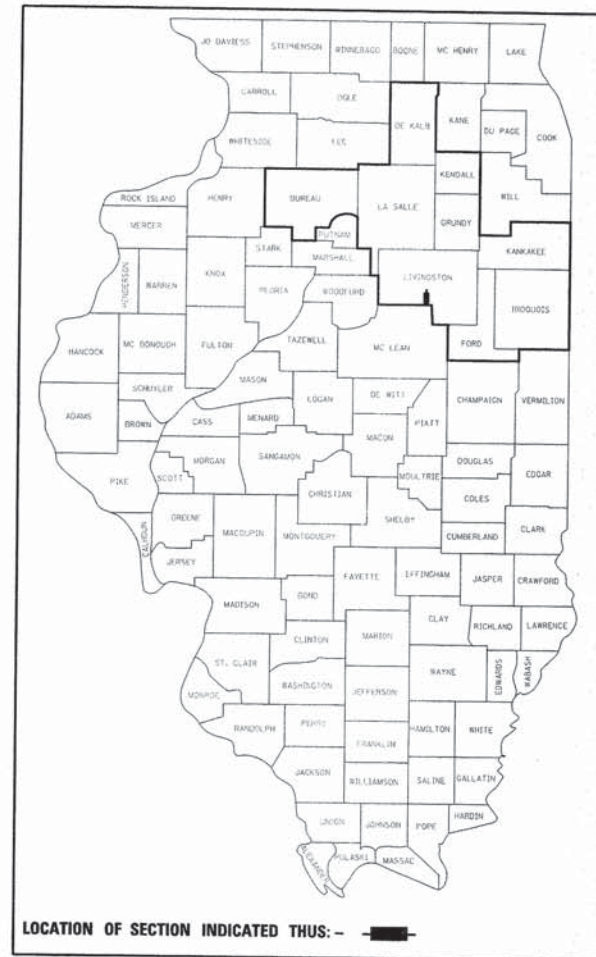


LOCATION MAP



GROSS LENGTH OF PROJECT = 221.04 FT = 0.042 MILE
NET LENGTH OF PROJECT = 221.04 FT = 0.042 MILE

C-93-079-14



STATE OF ILLINOIS
DEPARTMENT OF TRANSPORTATION
DIVISION OF HIGHWAYS

SUBMITTED 12/17 20 14
Bin
TOWNSHIP COMMISSIONER OF HIGHWAYS

SUBMITTED 12/17 20 14
Bill
COUNTY HIGHWAY ENGINEER

PASSED 12/31 20 14
Don
DISTRICT 3 LOCAL ROADS AND STREETS ENGINEER

RELEASING FOR BID BASED ON LIMITED REVIEW 12/31 20 14
Paul
DEPUTY DIRECTOR OF HIGHWAYS, REGION 2 ENGINEER

**PRINTED BY THE AUTHORITY
OF THE STATE OF ILLINOIS**



Mark S. Wylie Date 12/10/14
MARK S. WYLIE
ILLINOIS PROFESSIONAL ENGINEER
NO. 062-04376
EXPIRATION 11/30/15



GENERAL NOTES

EXCEPT AS NOTED ON THE PLANS, PAVEMENT GRADES SHOWN ARE AT THE TOP OF PAVEMENT SURFACES.

THE ENGINEER WILL BE THE SOLE JUDGE CONCERNING CURING TIME FOR VARIOUS HMA LIFTS.

FOR STABILIZATION, ALL TYPE III BARRICADES SHALL REQUIRE A MINIMUM OF FOUR BAGS PER BARRICADE.

WHERE SECTION OR SUBSECTION MONUMENTS ARE ENCOUNTERED, THE ENGINEER SHALL BE NOTIFIED BEFORE SUCH MONUMENTS ARE REMOVED. THE CONTRACTOR SHALL PROTECT AND CAREFULLY PRESERVE ALL MONUMENTS UNTIL AN AUTHORIZED SURVEYOR OR AGENT HAS WITNESSED OR OTHERWISE REFERENCED THEIR LOCATION. THE CONTRACTOR SHALL BE RESPONSIBLE FOR HAVING AN AUTHORIZED SURVEYOR RE-ESTABLISH ANY SECTION OR SUBSECTION MONUMENTS DESTROYED BY HIS OPERATIONS.

SEEDING SHALL NOT BE PERMITTED AT ANY TIME WHEN THE GROUND IS FROZEN, WET, OR IN AN UNTILLABLE CONDITION. LOCATIONS TO BE SEEDED WILL BE DETERMINED BY THE ENGINEER.

THE FINISHED EARTHWORK SHALL HAVE A VEGETATION SUSTAINING SOIL COVERING THE TOP FOUR INCHES IN AREAS TO BE SEEDED OR SODDED. THE VEGETATION SUSTAINING SOIL REQUIRED WILL NOT BE PAID FOR SEPARATELY BUT SHALL BE INCLUDED IN THE COST OF EARTH EXCAVATION.

ALL ELEVATIONS REFER TO U.S.G.S. MEAN SEA LEVEL DATUM.

ABANDONED UNDERGROUND UTILITIES THAT CONFLICT WITH CONSTRUCTION SHALL BE DISPOSED OF OUTSIDE THE LIMITS OF THE RIGHT OF WAY ACCORDING TO ARTICLE 202.03 OF THE STANDARD SPECIFICATIONS AND AS DIRECTED BY THE ENGINEER. THIS WORK WILL NOT BE PAID FOR SEPARATELY, BUT SHALL BE INCLUDED IN THE COST OF EARTH EXCAVATION.

ANY REFERENCE TO A STANDARD IN THESE PLANS SHALL BE INTERPRETED TO MEAN THE EDITION AS INDICATED BY THE SUBNUMBER SHOWN IN THE LIST OF STANDARDS INCLUDED IN THESE PLANS.

THE CONTRACTOR SHALL BE RESPONSIBLE FOR PROTECTING UTILITY PROPERTY FROM CONSTRUCTION OPERATIONS AS OUTLINED IN ARTICLE 107.31 OF THE STANDARD SPECIFICATIONS.

THE FOLLOWING RATES OF APPLICATION HAVE BEEN USED IN CALCULATING PLAN QUANTITIES:

GRANULAR MATERIALS	2.05	TONS / CU YD
AGGREGATE (PRIME COAT)	0.002	TONS / SQ YD
HMA RESURFACING	112	LBS / SQ YD / IN
SHORT TERM PAVEMENT MARKING	10	FT / 100 FT OF APPLICATION
MIX FOR CRACKS, JTS & FLGWYS	0.0003	TONS / SQ YD
LEVEL BINDER (HAND METHOD)	0.0003	TONS / SQ YD
SUPPLEMENTAL WATERING	3	GAL / SQ YD / APPLICATION
CALCIUM CHLORIDE	2	LB / SQ YD / APPLICATION
AGGREGATE DITCH CHECKS	5	TONS AGGREGATE

BITUMINOUS MATERIALS (PRIME COAT) RATES		
SURFACE TYPE	ESTIMATED TRUCK APPLICATION RATE	RESIDUAL RATE
AGGREGATE BASES	0.375 GAL / SQ YD	N/A
MILLED HMA OR PCC PAVEMENT	0.08 GAL / SQ YD	0.04 GAL / SQ YD
EXISTING PAVEMENT	0.05 GAL / SQ YD	0.025 GAL / SQ YD
FOG COAT (BETWEEN ADDITIONAL HMA LIFTS)	0.05 GAL / SQ YD	0.025 GAL / SQ YD

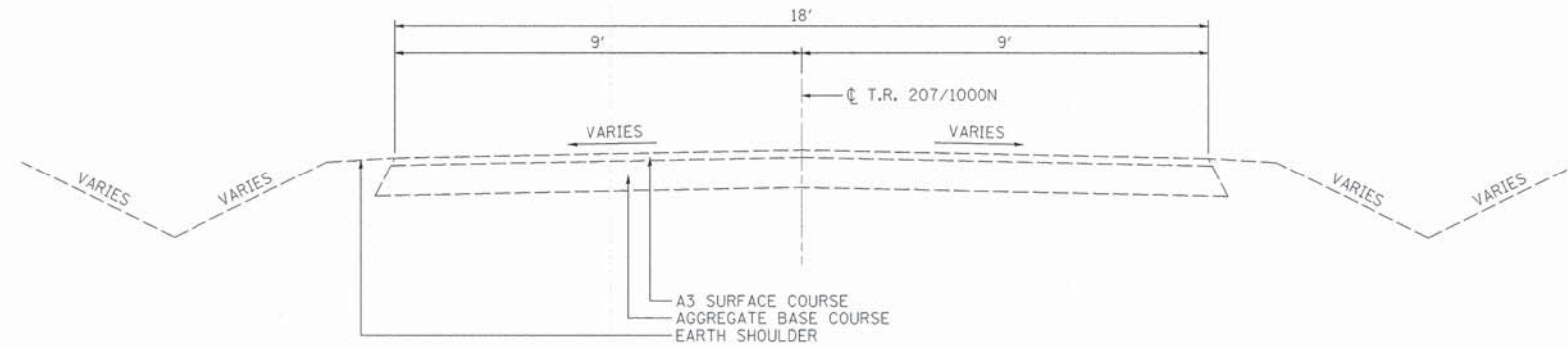
ESTIMATED TRUCK APPLICATION RATE USED FOR CALCULATING PLAN QUANTITIES

COMMITMENTS

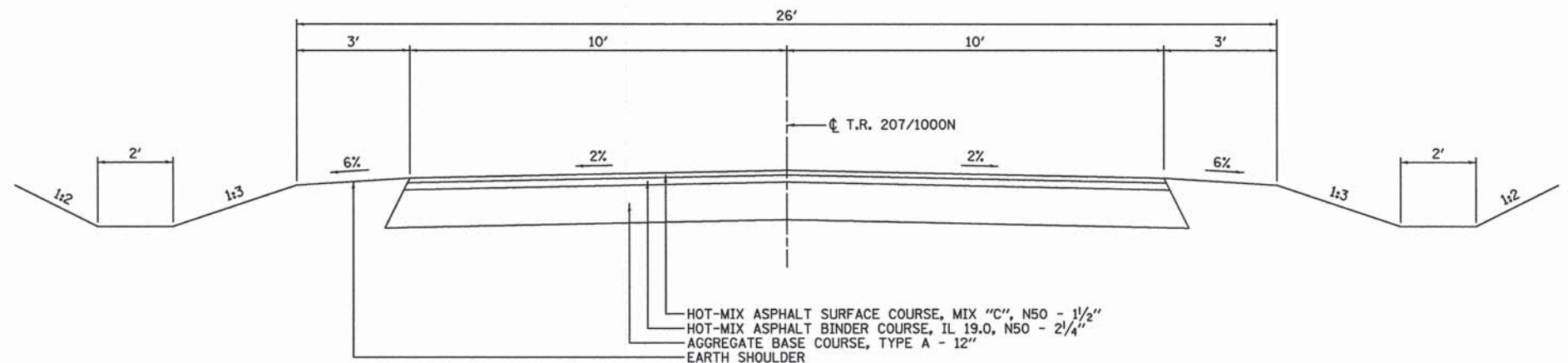
NONE

MIXTURES TABLE

	HMA SURFACE COURSE	HMA BINDER COURSE
PG GRADE	PG 64-22	PG 64-22
DESIGN AIR VOIDS	4.0% @ N50	4.0% @ N50
MIXTURE COMPOSITION	IL 9.5	IL 19.0
FRICTION AGGREGATE	MIXTURE C	-



EXISTING TYPICAL CROSS SECTION



PROPOSED TYPICAL CROSS SECTION

NOTE:

HEAVY DUTY EROSION CONTROL BLANKET SHALL BE PLACED ON 1:2 (V:H) SLOPES AND ALL DITCH SLOPES GREATER THAN OR EQUAL TO 2.0%.



DESIGNED - MSJ
CHECKED - MSW
DRAWN - MSJ
DATE - 12/10/14

REVIS
REVIS
REVIS
REVIS

STATE OF ILLINOIS
DEPARTMENT OF TRANSPORTATION

GENERAL NOTES, COMMITMENTS
AND TYPICAL CROSS SECTIONS

SCALE: SHEET NO. OF SHEETS STA. TO STA.

T.R. RTE.	SECTION	COUNTY	TOTAL SHEETS	SHEET NO.
207	10-08125-01-BR	LIVINGSTON	21	2
CONTRACT NO. 87589			ILLINOIS FED. AID PROJECT	

SUMMARY OF QUANTITIES

CODE NO.	ITEM	UNIT	TOTAL QUANTITY	ROADWAY	BOX CULVERT
				0004	0011
				RURAL	S. N. 053-5533
20200100	EARTH EXCAVATION	CU YD	230	230	
20700110	POROUS GRANULAR EMBANKMENT	TON	580	580	
25100635	HEAVY DUTY EROSION CONTROL BLANKET	SO YD	190	190	
28000250	TEMPORARY EROSION CONTROL SEEDING	POUND	600	600	
28000305	TEMPORARY DITCH CHECKS	FOOT	20	20	
28100107	STONE RIPRAP, CLASS A4	SO YD	272		272
28200200	FILTER FABRIC	SO YD	272		272
35100100	AGGREGATE BASE COURSE, TYPE A	TON	417	417	
40600275	BITUMINOUS MATERIALS (PRIME COAT)	POUND	1,443	1,443	
40603080	HOT-MIX ASPHALT BINDER COURSE, IL-19.0, N50	TON	73	73	
40603310	HOT-MIX ASPHALT SURFACE COURSE, MIX "C", N50	TON	48	48	
48100100	AGGREGATE SHOULDERS, TYPE A	TON	5	5	
50100100	REMOVAL OF EXISTING STRUCTURES	EACH	1		1
50200450	REMOVAL AND DISPOSAL OF UNSUITABLE MATERIAL FOR STRUCTURES	CU YD	100		100
50800205	REINFORCEMENT BARS, EPOXY COATED	POUND	31,060		31,060
* * 50900205	STEEL RAILING, TYPE S1	FOOT	54		54
51500100	NAME PLATES	EACH	1		1
54003000	CONCRETE BOX CULVERTS	CU YD	188.4		188.4
63200310	GUARDRAIL REMOVAL	FOOT	90	90	
67100100	MOBILIZATION	L SUM	1	1	
70101830	TRAFFIC CONTROL AND PROTECTION, STANDARD BLR 21	L SUM	1	1	
* X2501000	SEEDING, CLASS 2 (SPECIAL)	ACRE	0.25	0.25	
X5121800	PERMANENT STEEL SHEET PILING	SO FT	1,010		1,010
* / * * X6311205	TRAFFIC BARRIER TERMINAL, TYPE 5A (SPECIAL)	EACH	2	2	
* Z0026407	TEMPORARY SHEET PILING	SO FT	1,080		1,080
* Z0054500	ROCK FILL	TON	205		205

* SPECIAL PROVISION
 ** SPECIALTY ITEM



DATE - 12/10/14

DESIGNED - MSJ	REVISED
CHECKED - MSW	REVISED
DRAWN - MSJ	REVISED
CHECKED - MSW	REVISED

**STATE OF ILLINOIS
 DEPARTMENT OF TRANSPORTATION**

SUMMARY OF QUANTITIES

SCALE: SHEET NO. OF SHEETS STA. TO STA.

T. R. RTE.	SECTION	COUNTY	TOTAL SHEETS	SHEET NO.
207	10-08125-01-BR	LIVINGSTON	21	3
CONTRACT NO. 87589			ILLINOIS FED. AID PROJECT	

SCHEDULE OF QUANTITIES

EARTHWORK				
LOCATION	EARTH EXCAVATION -20200100	TOTAL EXCAVATION ADJUSTED FOR 25% SHRINKAGE	EMBANKMENT	BALANCE WASTE (+) SHORTAGE (-)
T. R. 27/1000N				
STA 8+10.00 TO STA 9+79.80	230	175	145	30
TOTAL	230	175	145	30

POROUS GRANULAR EMBANKMENT - 20700110	
LOCATION	TON
S. N. 053-4021	580

TEMPORARY DITCH CHECKS - 28000305	
STATION	FOOT
T. R. 27/1000N	
STA 9+70.00 LT	10
STA 9+70.00 RT	10
TOTAL	20

HOT-MIX ASPHALT BINDER COURSE, IL-19.0, N50 - 40603080		
STATION	TO STATION	TON
T. R. 27/1000N		
STA 8+10.00	STA 10+31.04	73
TOTAL		73

HEAVY DUTY EROSION CONTROL BLANKET - 25100635			
STATION	TO STATION	SQ YD	
T. R. 27/1000N			
STA 8+10.00 RT	STA 9+80.00 RT	99	
STA 8+10.00 LT	STA 9+80.00 LT	91	
TOTAL		190	

GUARDRAIL REMOVAL - 63200310			
STATION	TO STATION	FOOT	
T. R. 27/1000N			
STA 9+72.17 LT	STA 9+84.79 LT	14	
STA 9+72.58 RT	STA 9+84.63 RT	13	
STA 10+15.24 LT	STA 10+25.69 LT	31	
STA 10+15.10 RT	STA 10+24.76 RT	33	
TOTAL		90	

HOT-MIX ASPHALT SURFACE COURSE, MIX "C", N50 - 40603310		
STATION	TO STATION	TON
T. R. 27/1000N		
STA 8+10.00	STA 10+31.04	48
TOTAL		48

TEMPORARY EROSION CONTROL SEEDING - 28000250			
STATION	TO STATION	POUND	
T. R. 27/1000N			
STA 8+10.00 LT	STA 10+31.04 LT	300	
STA 8+10.00 RT	STA 10+31.04 RT	300	
TOTAL		600	

AGGREGATE BASE COURSE, TYPE A - 35100100		
STATION	TO STATION	TON
T. R. 27/1000N		
STA 8+10.00	STA 10+31.04	417
TOTAL		417

AGGREGATE SHOULDERS, TYPE A - 48100100		
STATION	TO STATION	TON
C. H 10/T. R. 1600E		
STA 99+49.30	STA 100+49.43	5
TOTAL		5

SEEDING, CLASS 2 (SPECIAL) - X2501000			
STATION	TO STATION	ACRE	
T. R. 27/1000N			
STA 8+10.00 LT	STA 10+31.04 LT	0.125	
STA 8+10.00 RT	STA 10+31.04 RT	0.125	
TOTAL		0.25	

BITUMINOUS MATERIALS (PRIME COAT) - 40600275		
STATION	TO STATION	POUND
T. R. 27/1000N		
STA 8+10.00	STA 10+31.04	1,443
TOTAL		1,443

TRAFFIC BARRIER TERMINAL, TYPE 5A (SPECIAL) - X6311205		
STATION	EACH	
T. R. 27/1000N		
STA 10+13.50 LT	STA 10+25.69 LT	1
STA 10+13.50 RT	STA 10+24.76 RT	1
TOTAL	2	

MOBILIZATION - 67100100	
LOCATION	L SUM
ENTIRE PROJECT	1

TRAFFIC CONTROL AND PROTECTION, STANDARD BLR 21 - 70101830	
LOCATION	L SUM
ENTIRE PROJECT	1



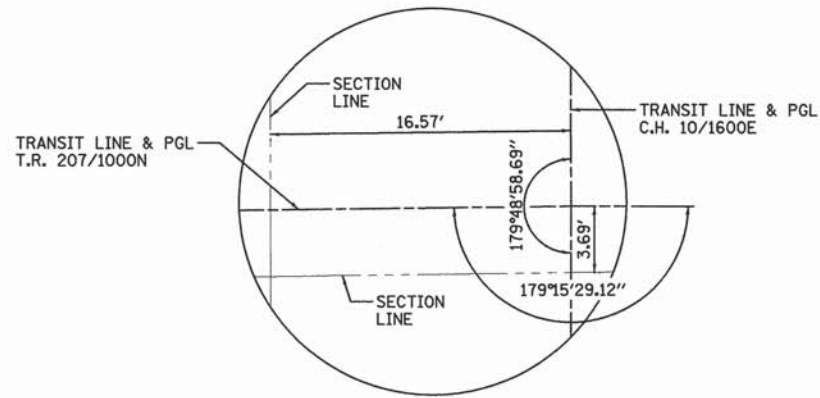
DESIGNED - MSJ	REVISED
CHECKED - MSW	REVISED
DRAWN - MSJ	REVISED
CHECKED - MSW	REVISED

**STATE OF ILLINOIS
DEPARTMENT OF TRANSPORTATION**

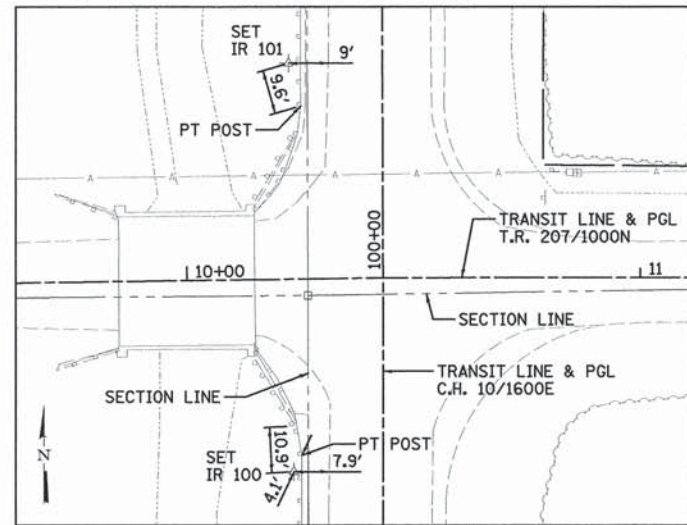
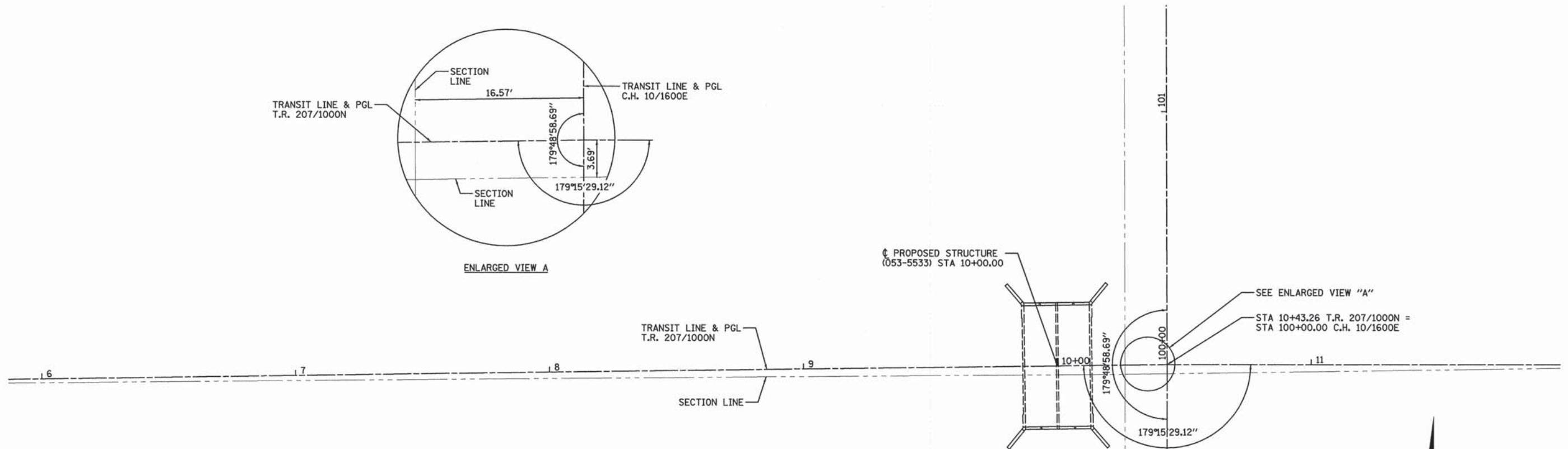
SCHEDULE OF QUANTITIES

SCALE: SHEET NO. OF SHEETS STA. TO STA.

T. R. RTE.	SECTION	COUNTY	TOTAL SHEETS	SHEET NO.
207	10-08125-01-BR	LIVINGSTON	21	4
CONTRACT NO. 87589				
ILLINOIS FED. AID PROJECT				

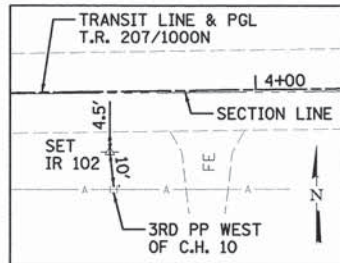


ENLARGED VIEW A

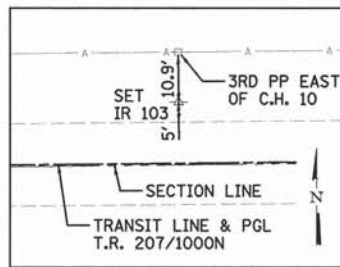


SET IR #100
STA 99+57.06/19.65' LT.
N=1495120.744
E=904171.174
ELEV=681.459

SET IR #101
STA 10+47.49/20.70' LT.
N=1495211.180
E=904169.927
ELEV=681.346



SET IR #102
STA 3+67.68/13.39' RT.
N=1495140.928
E=903515.472
ELEV=681.692



SET IR #103
N=1495181.384
E=904711.595
ELEV=683.124

BENCHMARK:
*1223, SET MAG NAIL NORTH
FACE OF POWER POLE, SOUTH
SIDE T.R. 207/1000N,
3RD WEST OF C.H. 10.
STA 3+68.13/23.26' RT.
ELEVATION = 682.56

BENCHMARK:
*1360, SET MAG NAIL SOUTH
FACE OF POWER POLE, NORTH
SIDE T.R. 207/1000N, ±150'
WEST OF C.H. 10.
STA 8+60.23/22.54' LT.
ELEVATION = 679.64

STATION	NORTHING	EASTING
6+00.00	1495157.543	903747.586
10+00.00	1495163.094	904147.547
10+26.69	1495163.464	904174.236
10+43.26	1495163.694	904190.804
11+00.00	1495163.747	904247.543
98+00.00	1494963.694	904190.887
99+96.31	1495160.007	904190.805
100+00.00	1495163.694	904190.804
101+00.00	1495263.694	904190.442

Farnsworth
GROUP, INC.
2709 McGraw Drive
Bloomington, Illinois 61704
309/663-8435, 309/663-1571 fax

DATE - 12/10/14

DESIGNED - MSJ
CHECKED - MSW
DRAWN - MSJ
CHECKED - MSW

REVISED
REVISED
REVISED
REVISED

STATE OF ILLINOIS
DEPARTMENT OF TRANSPORTATION

ALIGNMENT, SURVEY TIES AND BENCHMARKS

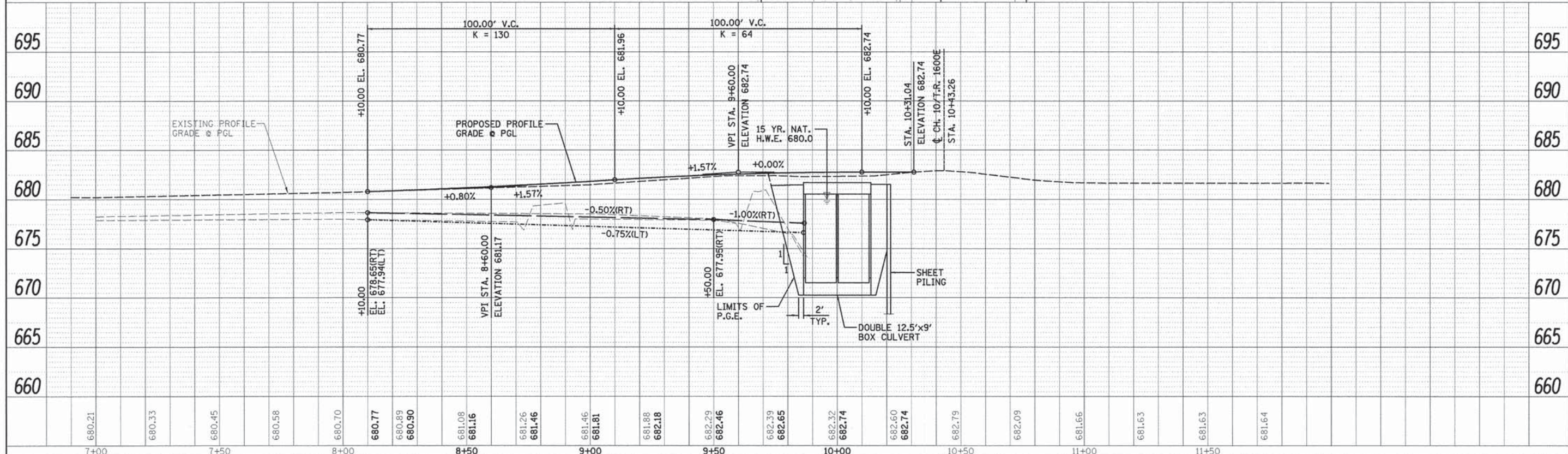
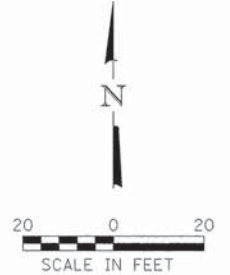
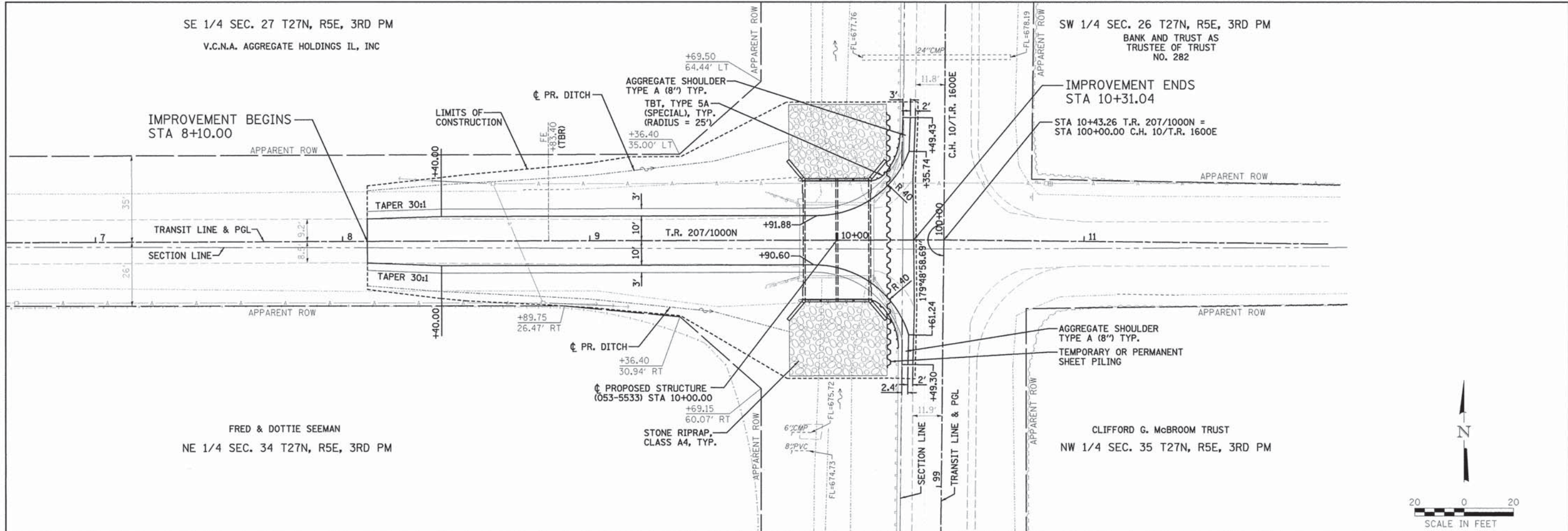
SCALE: SHEET NO. OF SHEETS STA. TO STA.

T.R.	SECTION	COUNTY	TOTAL SHEETS	SHEET NO.
207	10-08125-01-BR	LIVINGSTON	21	5

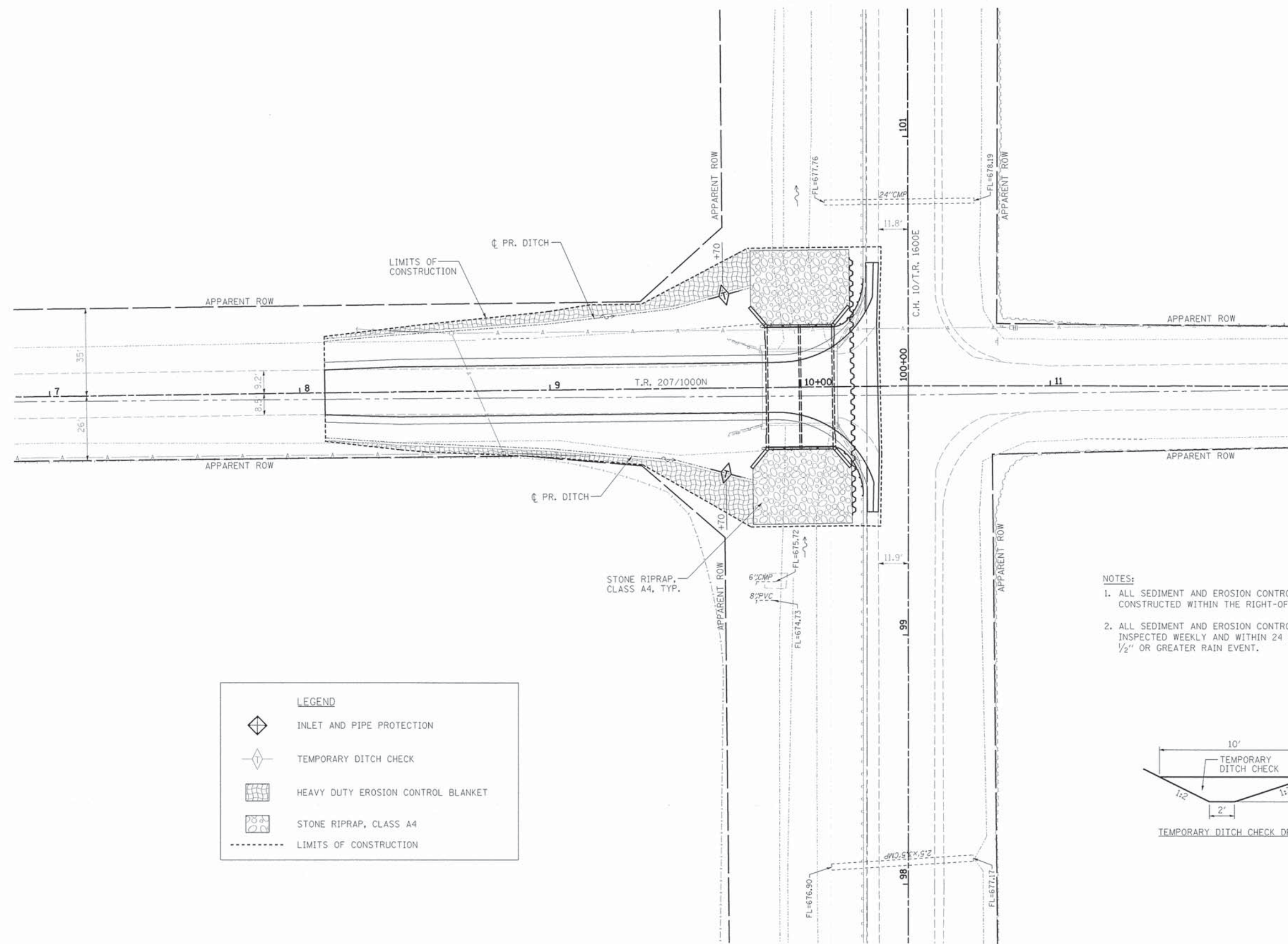
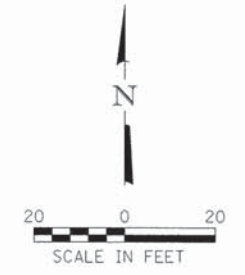
CONTRACT NO. 87589
ILLINOIS FED. AID PROJECT

DATE	
BY	
DESIGNED	MSJ
CHECKED	MSW
DRAWN	MSJ
NOTED	
DATE	12/10/14

DATE	
BY	
DESIGNED	MSJ
CHECKED	MSW
DRAWN	MSJ
NOTED	
DATE	12/10/14



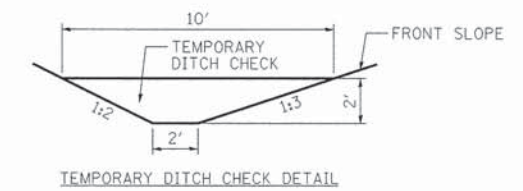
Farnsworth GROUP, INC. 2709 McGraw Drive Bloomington, Illinois 61704 309/663-8435, 309/663-1571 fax	DESIGNED - MSJ	REVISOR	STATE OF ILLINOIS DEPARTMENT OF TRANSPORTATION	PLAN & PROFILE	T.R. NO.	SECTION	COUNTY	TOTAL SHEETS	SHEET NO.
	CHECKED - MSW	REVISOR			207	10-08125-01-BR	LIVINGSTON	21	6
DATE - 12/10/14	CHECKED - MSW	REVISOR	SCALE:	SHEET NO. OF SHEETS	STA. TO STA.	CONTRACT NO. 87589 ILLINOIS FED. AID PROJECT			



NOTES:

1. ALL SEDIMENT AND EROSION CONTROL SYSTEMS SHALL BE CONSTRUCTED WITHIN THE RIGHT-OF-WAY.
2. ALL SEDIMENT AND EROSION CONTROL SYSTEMS SHALL BE INSPECTED WEEKLY AND WITHIN 24 HOURS AFTER EACH 1/2" OR GREATER RAIN EVENT.

LEGEND	
	INLET AND PIPE PROTECTION
	TEMPORARY DITCH CHECK
	HEAVY DUTY EROSION CONTROL BLANKET
	STONE RIPRAP, CLASS A4
	LIMITS OF CONSTRUCTION



Farnsworth GROUP, INC.
 2709 McGraw Drive
 Bloomington, Illinois 61704
 309/863-8435, 309/863-1571 fax

DESIGNED - MSJ	REVIS
CHECKED - MSW	REVIS
DRAWN - MSJ	REVIS
CHECKED - MSW	REVIS
DATE - 12/10/14	

DESIGNED - MSJ	REVIS
CHECKED - MSW	REVIS
DRAWN - MSJ	REVIS
CHECKED - MSW	REVIS

**STATE OF ILLINOIS
 DEPARTMENT OF TRANSPORTATION**

EROSION CONTROL PLAN

SCALE: SHEET NO. OF SHEETS STA. TO STA.

T.R. RTE.	SECTION	COUNTY	TOTAL SHEETS	SHEET NO.
207	10-08125-01-BR	LIVINGSTON	21	7
				CONTRACT NO. 87589
ILLINOIS FED. AID PROJECT				

Benchmarks: Mag nail set in South face of 1st power pole on North side of 1000N, ±150
 West of C.H. 10, Station 8+60.23/22.54', LT., Elevation 679.64.
 Mag nail set in North face of 3rd power pole on South side of 1000N, ±650
 West of C.H. 10, Station 3+68.13/23.26', RT., Elevation 682.56.

Existing Structure: S.N. 053-4021 was originally constructed in 1978 by Livingston County. The structure consists of a single span Precast Prestressed Concrete Deck Beam superstructure supported by creosoted timber piles. The roadway embankment near the bridge is supported by treated timber lagging and the adjacent creosoted timber piles. The back to back of abutment dimension measures 31'-6" and the out to out dimension measures 30'-4". The structure is to be replaced during road closure.

No Salvage.

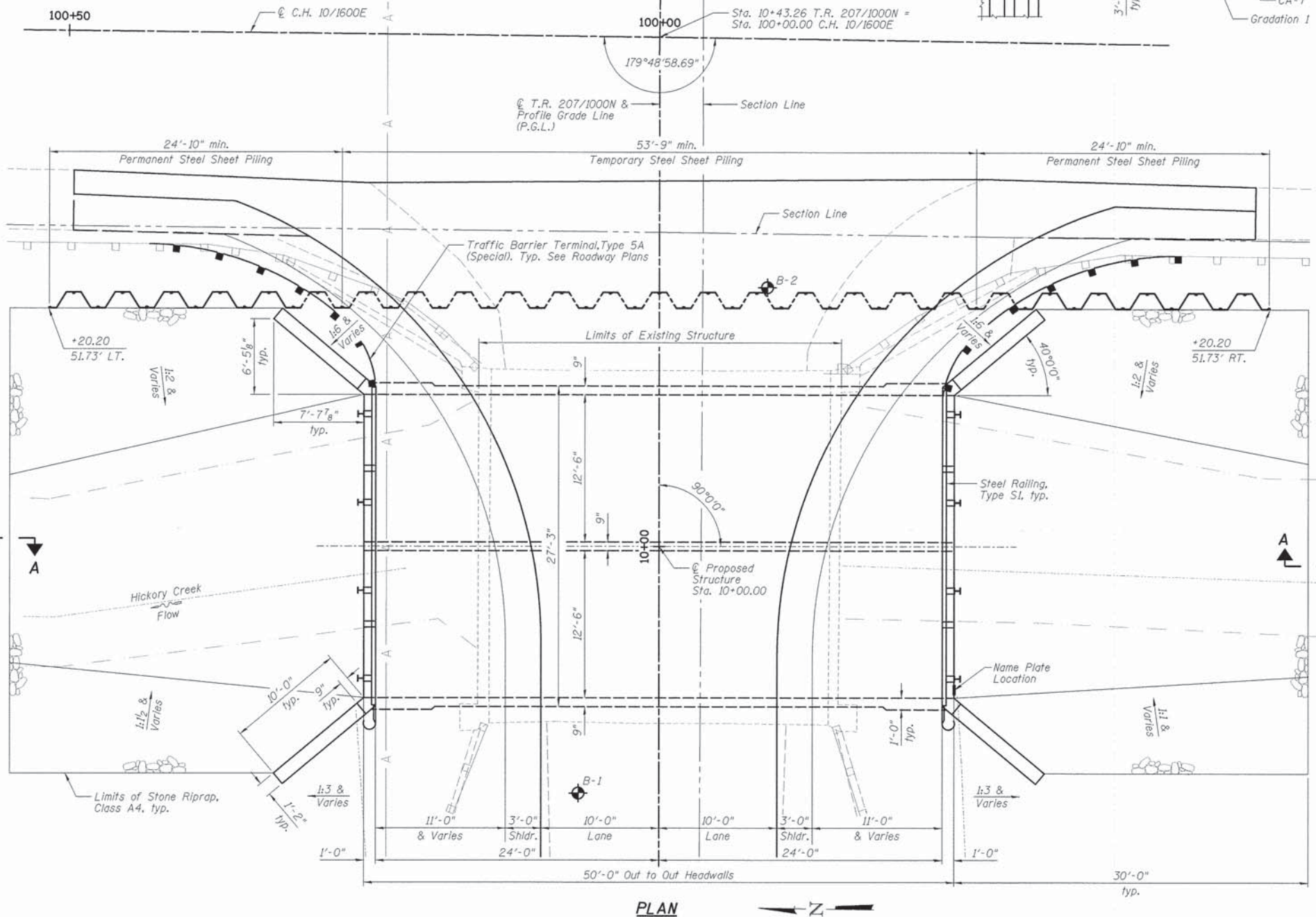
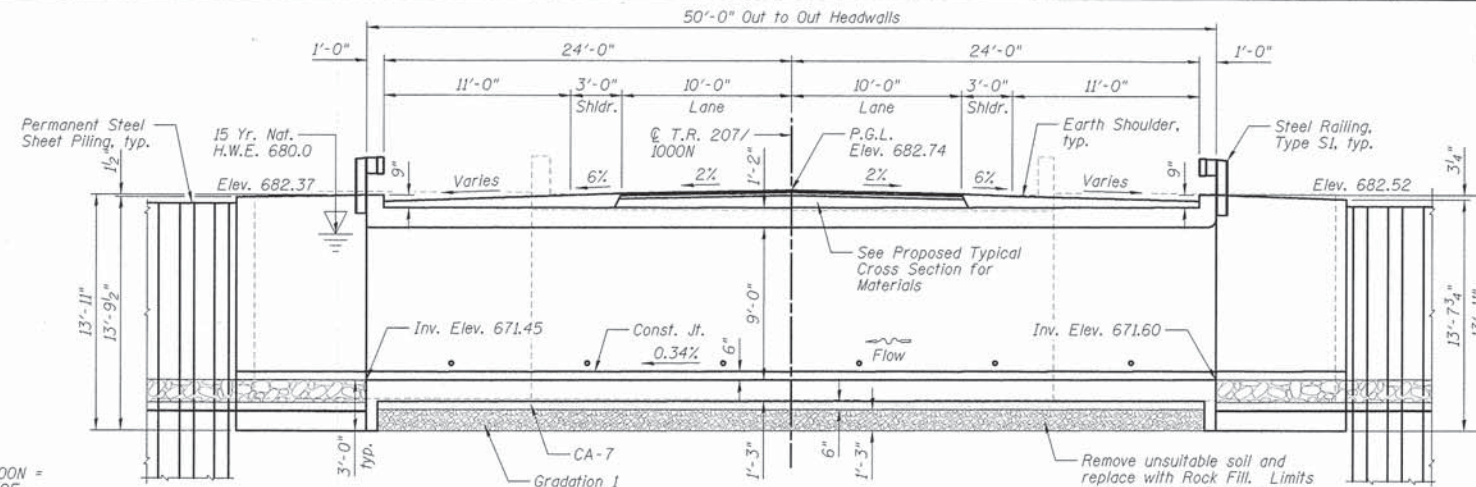
DESIGN SPECIFICATIONS
 2012 AASHTO LRFD Bridge Design Specifications,
 Customary U.S. Units, 6th Edition

DESIGN STRESSES

FIELD UNITS
 $f'_c = 3,500$ psi (Cast-In-Place Concrete)
 $f_y = 60,000$ psi (Reinforcement)
 $f_y = 50,000$ psi (ASTM A572 Steel Sheet Piling)

LOADING HL-93

Allow 25#/sq. ft. for future wearing surface.



LONGITUDINAL SECTION

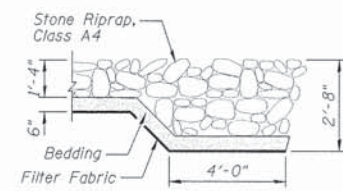
WATERWAY INFORMATION

Drainage Area = 8.4 Sq. Mi.		Existing Low Grade Elev. 680.21 @ Sta. 7+00		Proposed Low Grade Elev. 680.21 @ Sta. 7+00	
Flood Yr.	0	10	25	50	100
Design	15	893	221	225	680.0
Base	100	1467	221	225	682.0
Overtopping					
Max. Calc.					

10 Yr. Velocity = 4.22 ft/sec. (Proposed)
 10 Yr. Velocity = 4.64 ft/sec. (Existing)

INDEX OF SHEETS

SHEET NO.	TITLE
C1	GENERAL PLAN AND ELEVATION
C2	GENERAL DATA
C3	SLAB REINFORCEMENT AND DETAILS
C4	BARREL WALL ELEVATIONS
C5	WINGWALL DETAILS
C6	STEEL RAILING, TYPE S1
C7-C8	SOIL BORING LOGS
C9-C12	EXISTING PLANS



I certify that to the best of my knowledge, this box culvert design is structurally adequate for the design loading shown on the plans. The design is an economical one for the style of structure and complies with requirements of the current Design Specifications.



Joseph M. Lowrance
 JOSEPH M. LOWRANCE
 ILLINOIS STRUCTURAL ENGINEER
 NO. 081-006446
 Exp. Date 11/30/16



**T.R. 207 OVER
 HICKORY CREEK
 SECTION 10-08125-01-BR
 LIVINGSTON COUNTY
 STA. 10+00.00**

Farnsworth GROUP, INC.
 2709 McCraw Drive
 Bloomington, Illinois 61704
 309-663-4435, 309-663-1971 fax

DESIGNED - TCR	REVIS
CHECKED - JML	REVIS
DRAWN - DJM	REVIS
CHECKED - JML	REVIS

STATE OF ILLINOIS
 DEPARTMENT OF TRANSPORTATION

GENERAL PLAN AND ELEVATION
 STRUCTURE NO. 053-5533
 SHEET NO. C1 OF 12 SHEETS

T.R. RTE.	SECTION	COUNTY	TOTAL SHEETS NO.
207	10-08125-01-BR	LIVINGSTON	21 8

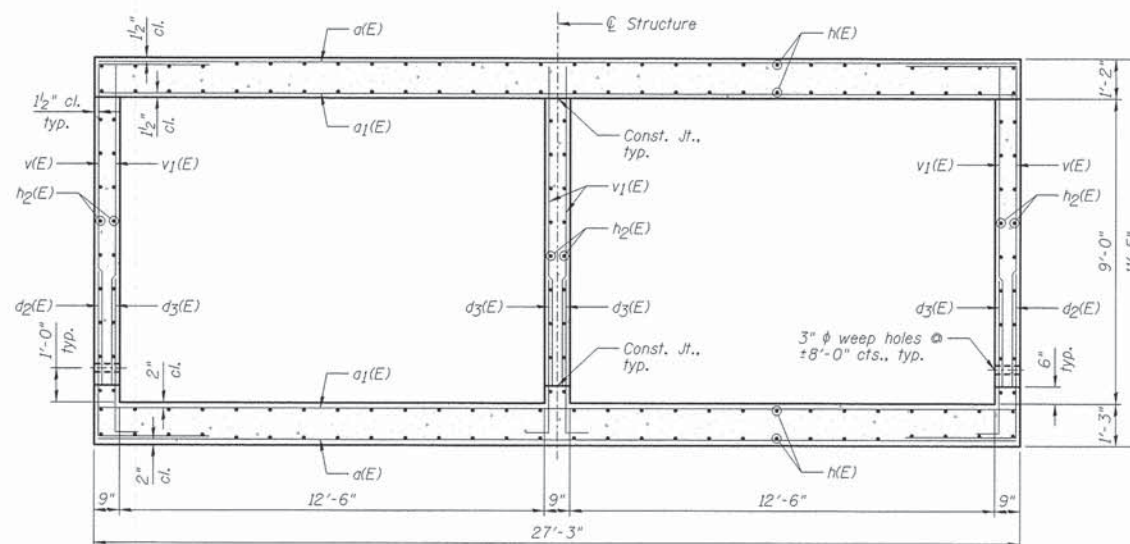
CONTRACT NO. 87589
 ILLINOIS FED. AID PROJECT

GENERAL NOTES

- 1.) At least 6'-0" of this culvert barrel shall be poured monolithically with the wingwalls.
- 2.) Exposed edges shall be beveled $\frac{3}{4}$ ".
- 3.) For backfilling and embankment, see standard specifications and roadway plans.
- 4.) It shall be the responsibility of the Contractor to divert the stream flow during construction in order to keep the construction areas free of water. The method of water diversion shall be subject to the approval of the Engineer and the cost shall be included with "Concrete Box Culverts".
- 5.) The Contractor shall field locate and protect all utilities before starting construction. The Contractor shall submit information regarding the protection of all utilities to the Engineer for review.
- 6.) There will be no additional compensation should any reinforcement need to be cut or bent in the field.
- 7.) Where called for, construction joints shall be bonded in accordance with section 503.09(b) of the Standard Specifications.
- 8.) Layout of the Slope Protection System may be varied to suit ground conditions in the field as directed by the Engineer.
- 9.) Precast concrete box culverts will not be allowed.
- 10.) The pay item "Removal and Disposal of Unsuitable Material for Structures" shall include the excavation of unsuitable material for a depth of 2'-0" below the structure for a width of approximately 31'-3" within the limits of the toewalls as shown on the plans. The actual quantity shall be determined in the field by the Engineer.
- 11.) The pay item "Rock Fill" shall include the placement of Gradation 1 and CA-7 below the structure for a width of approximately 31'-3" within the limits of the toewalls as shown on the plans. The actual quantity shall be determined in the field by the Engineer.

HICKORY CREEK
BUILT 20__ BY
LIVINGSTON COUNTY
SECTION 10-08125-01-BR
STATION 10+00
STR. NO. 053-5533 LOADING HL-93

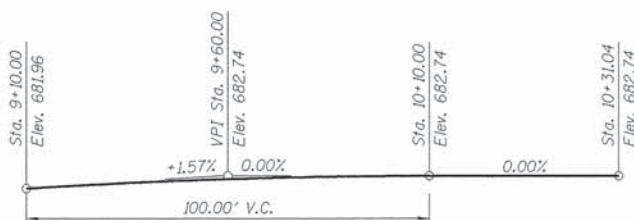
NAME PLATE
See Standard 515001



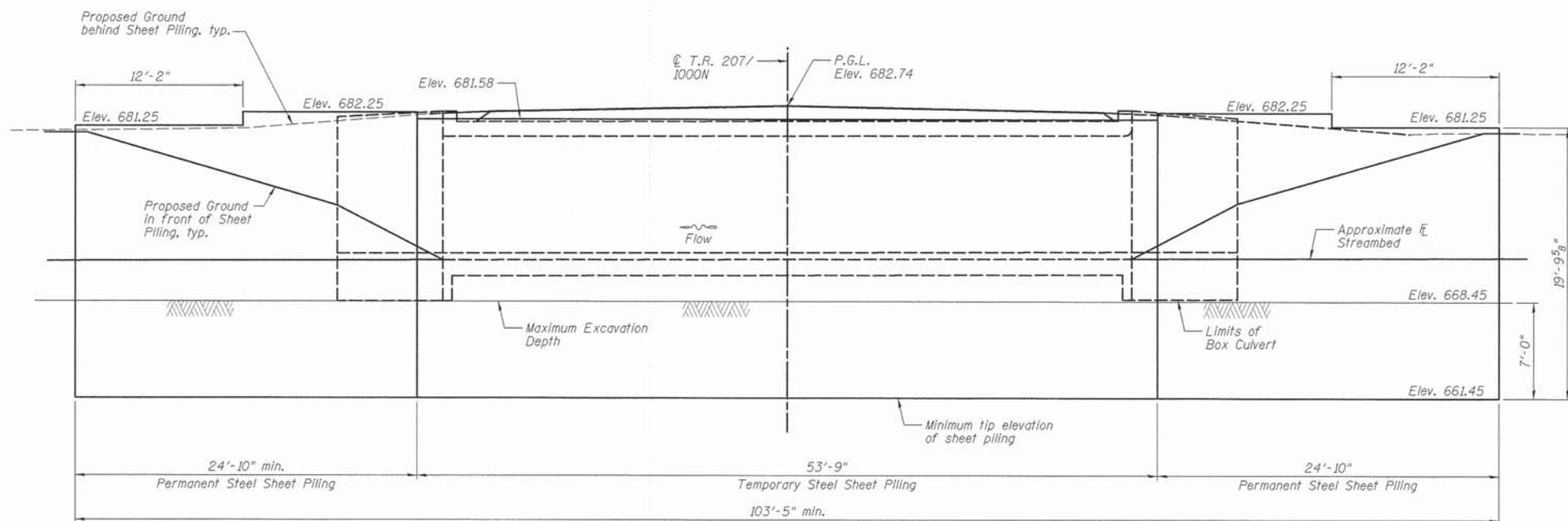
SECTION THRU CULVERT

TOTAL BILL OF MATERIAL

ITEMS	UNITS	TOTAL
Stone Riprap, Class A4	Sq. Yd.	272
Filter Fabric	Sq. Yd.	272
Removal of Existing Structures	Each	1
Removal and Disposal of Unsuitable Material for Structures	Cu. Yd.	100
Reinforcement Bars, Epoxy Coated	Pound	31,060
Steel Rolling, Type S1	Foot	54
Name Plates	Each	1
Concrete Box Culverts	Cu. Yd.	188.4
Temporary Sheet Piling	Sq. Ft.	1,080
Rock Fill	Ton	205
Permanent Steel Sheet Piling	Sq. Ft.	1,010



PROFILE GRADE
(Along \bar{C} Roadway)



SHEET PILING ELEVATION

NOTE:

The Temporary Sheet Piling and Permanent Steel Sheet Piling shall have a minimum elastic section modulus of 22.4 in³/ft and a minimum moment of inertia of 138.3 in⁴/ft.

BILL OF MATERIAL

Item	Unit	Quantity
Temporary Sheet Piling	Sq. Ft.	1010
Permanent Steel Sheet Piling	Sq. Ft.	1090

Farnsworth
GROUP, INC.
2709 McGraw Drive
Bloomington, Illinois 61704
309/663-8435, 309/663-1571 fax

DESIGNED - TCR	REVISED
CHECKED - JML	REVISED
DRAWN - DJM	REVISED
CHECKED - JML	REVISED

STATE OF ILLINOIS
DEPARTMENT OF TRANSPORTATION

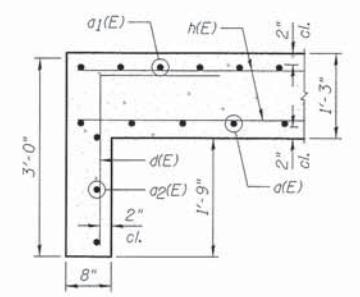
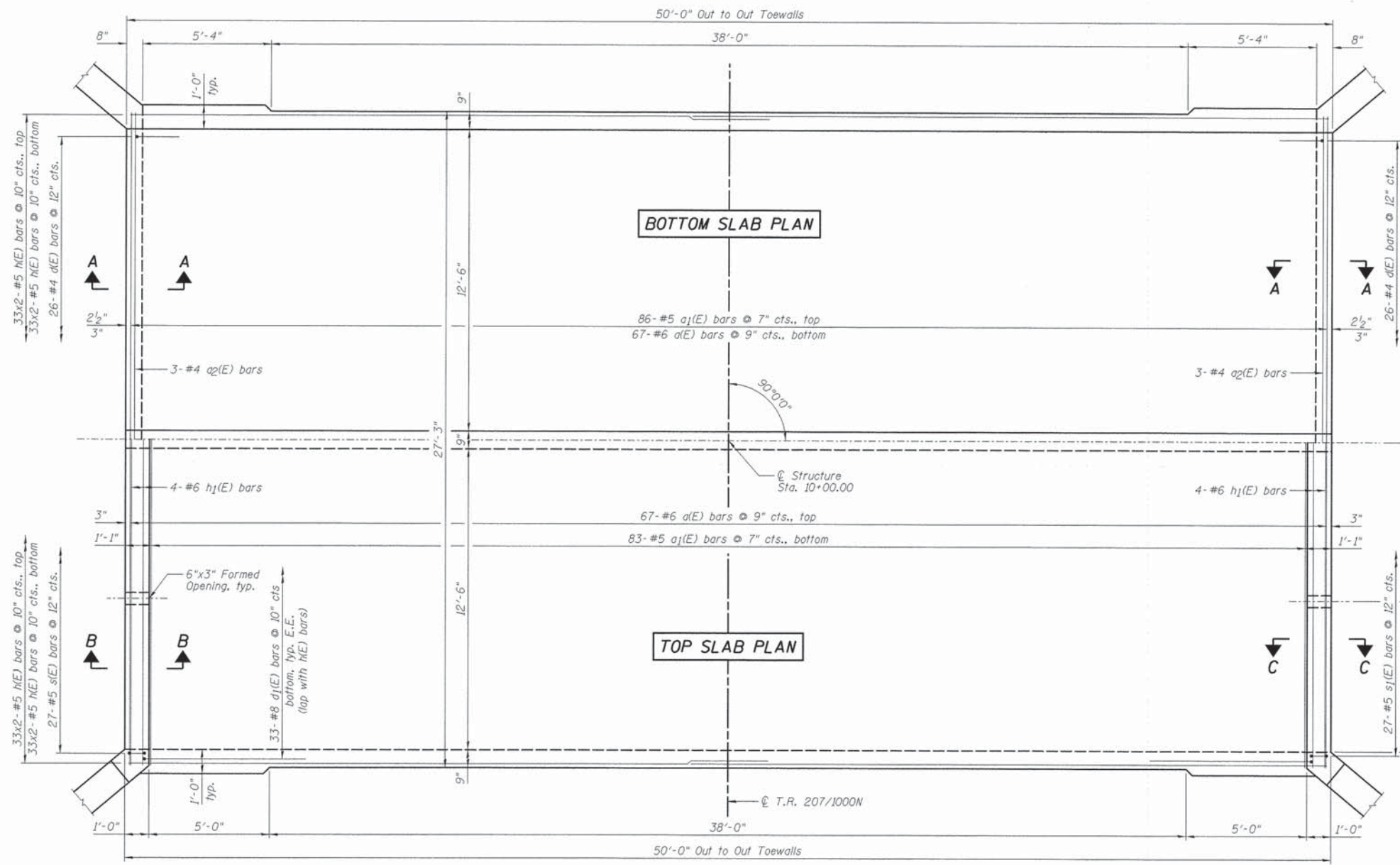
GENERAL DATA
STRUCTURE NO. 053-5533

SHEET NO. C2 OF 12 SHEETS

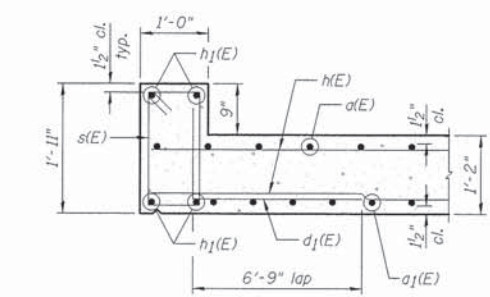
T.R. RTE.	SECTION	COUNTY	TOTAL SHEETS	SHEET NO.
207	10-08125-01-BR	LIVINGSTON	21	9

CONTRACT NO. 87589

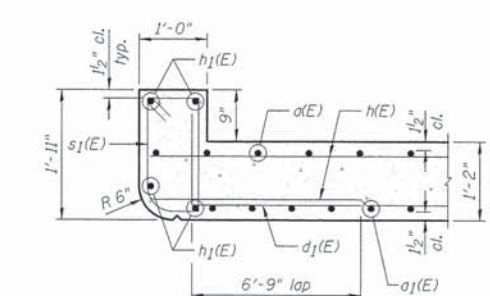
ILLINOIS FED. AID PROJECT



SECTION A-A

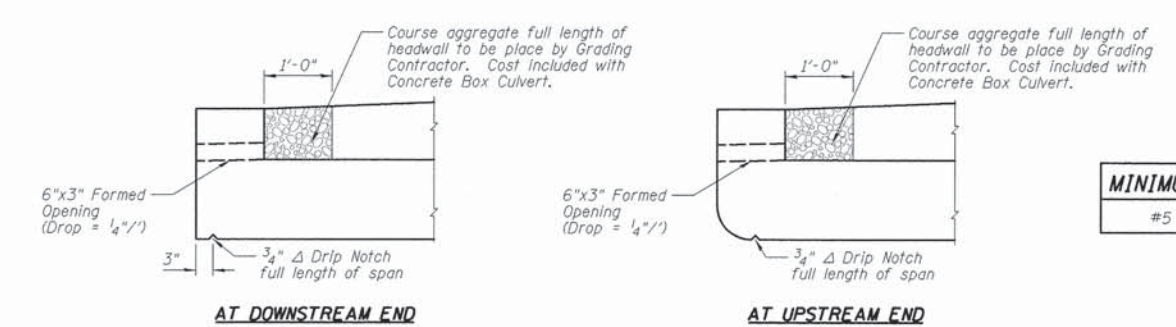


SECTION B-B

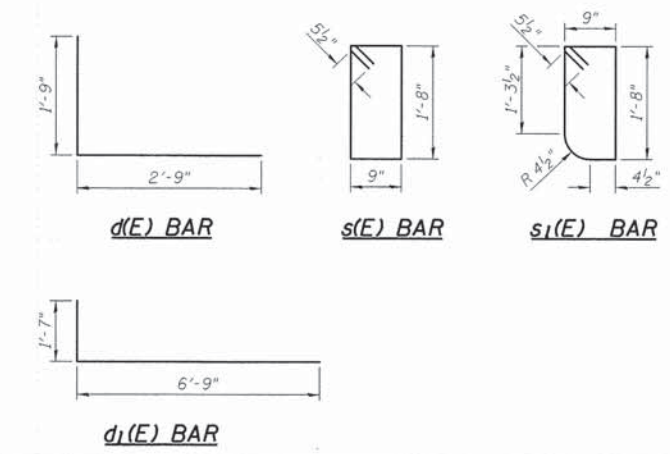


SECTION C-C

SLAB PLAN



DRAIN DETAILS



BAR LIST

Bar	No.	Size	Length	Shape
a(E)	134	#6	26'-11"	—
a1(E)	169	#5	26'-11"	—
a2(E)	6	#4	26'-11"	—
d(E)	52	#4	4'-6"	—
d1(E)	65	#8	8'-4"	—
h(E)	264	#5	26'-6"	—
h1(E)	8	#6	26'-11"	—
s(E)	27	#5	5'-9"	□
s1(E)	27	#5	5'-7"	□

NOTES:

- 1.) For Total Bill of Material, see Sheet C2.
- 2.) Bars indicated thus 33x2 -#5 etc. indicates 33 lines of bars with 2 lengths per line.

Farnsworth GROUP, INC.
2709 McGraw Drive
Bloomington, Illinois 61704
309/853-8435, 309/853-1574 fax

DESIGNED - TCR	REVIS
CHECKED - JML	REVIS
DRAWN - DJM	REVIS
CHECKED - JML	REVIS
DATE - 12/10/14	

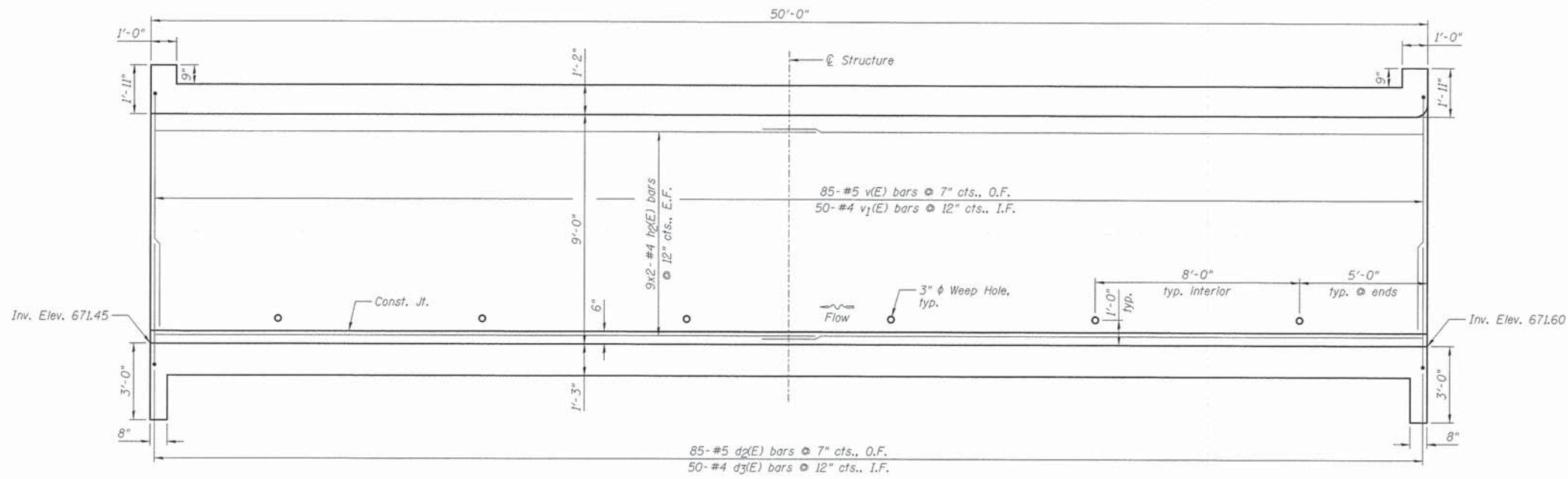
STATE OF ILLINOIS DEPARTMENT OF TRANSPORTATION

SLAB REINFORCEMENT AND DETAILS
STRUCTURE NO. 053-5533

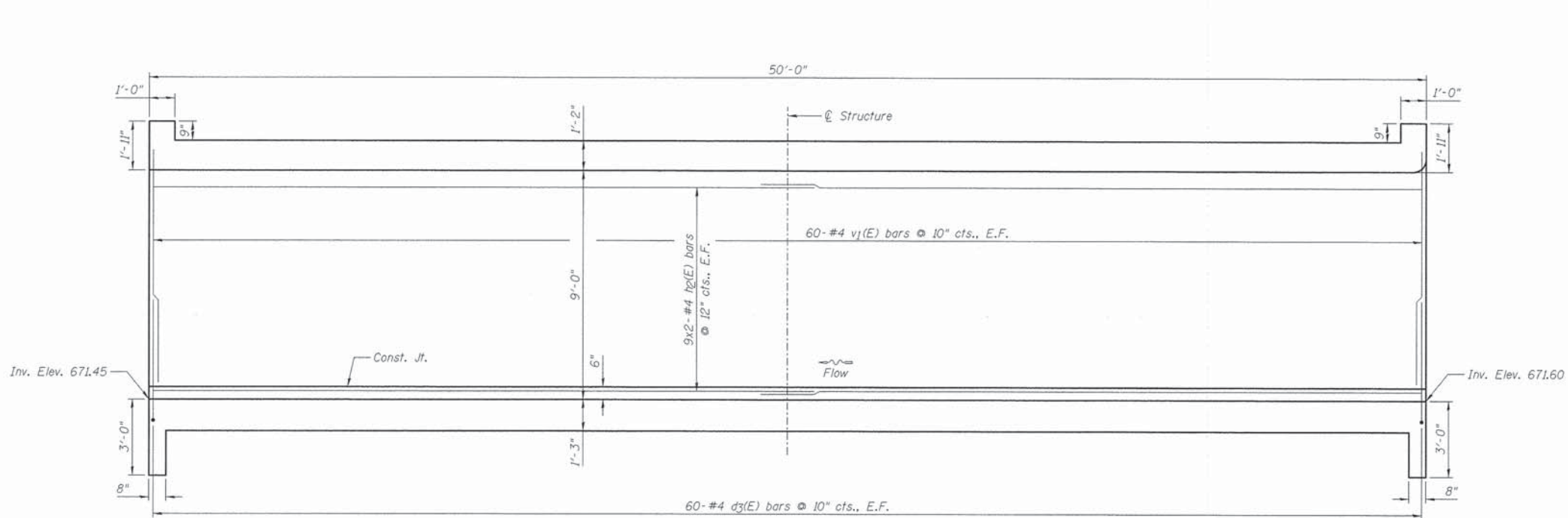
T.R. RTE.	SECTION	COUNTY	TOTAL SHEETS NO.
207	10-08125-01-BR	LIVINGSTON	21 10
			CONTRACT NO. 87589

SHEET NO. C3 OF 12 SHEETS

ILLINOIS FED. AID PROJECT



TYPICAL EXTERIOR WALL VIEW

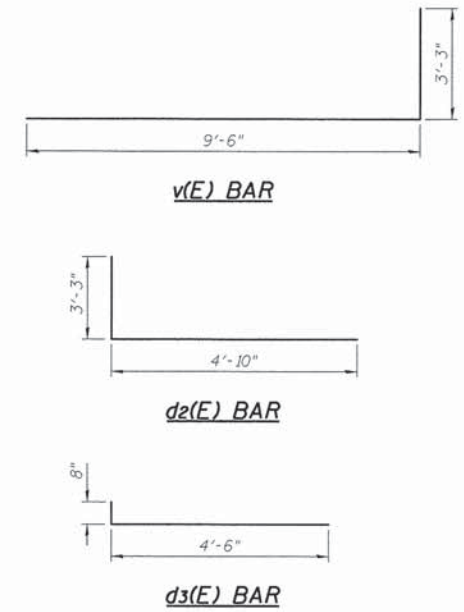


TYPICAL INTERIOR WALL VIEW

MINIMUM BAR LAP	
#4	2'-11"
#5	3'-3"

BAR LIST

Bar	No.	Size	Length	Shape
hp(E)	108	#4	26'-4"	—
dz(E)	170	#5	8'-1"	—
dz3(E)	220	#4	5'-2"	—
v(E)	170	#5	12'-9"	—
v1(E)	220	#4	9'-6"	—



NOTES:

- 1.) For Total Bill of Material, see Sheet C2.
- 2.) Bars indicated thus 9x2-#4 etc. indicates 9 lines of bars with 2 lengths per line.
- 3.) E.F. denotes Each Face, O.F. denotes Outside Face and I.F. denotes Inside Face.

Farnsworth GROUP, INC.
2709 McGraw Drive
Bloomington, Illinois 61704
309-863-8435, 309-863-1571 fax

DESIGNED - TCR
CHECKED - JML
DRAWN - DJM
DATE - 12/10/14

REVISOR
REVISOR
REVISOR
REVISOR

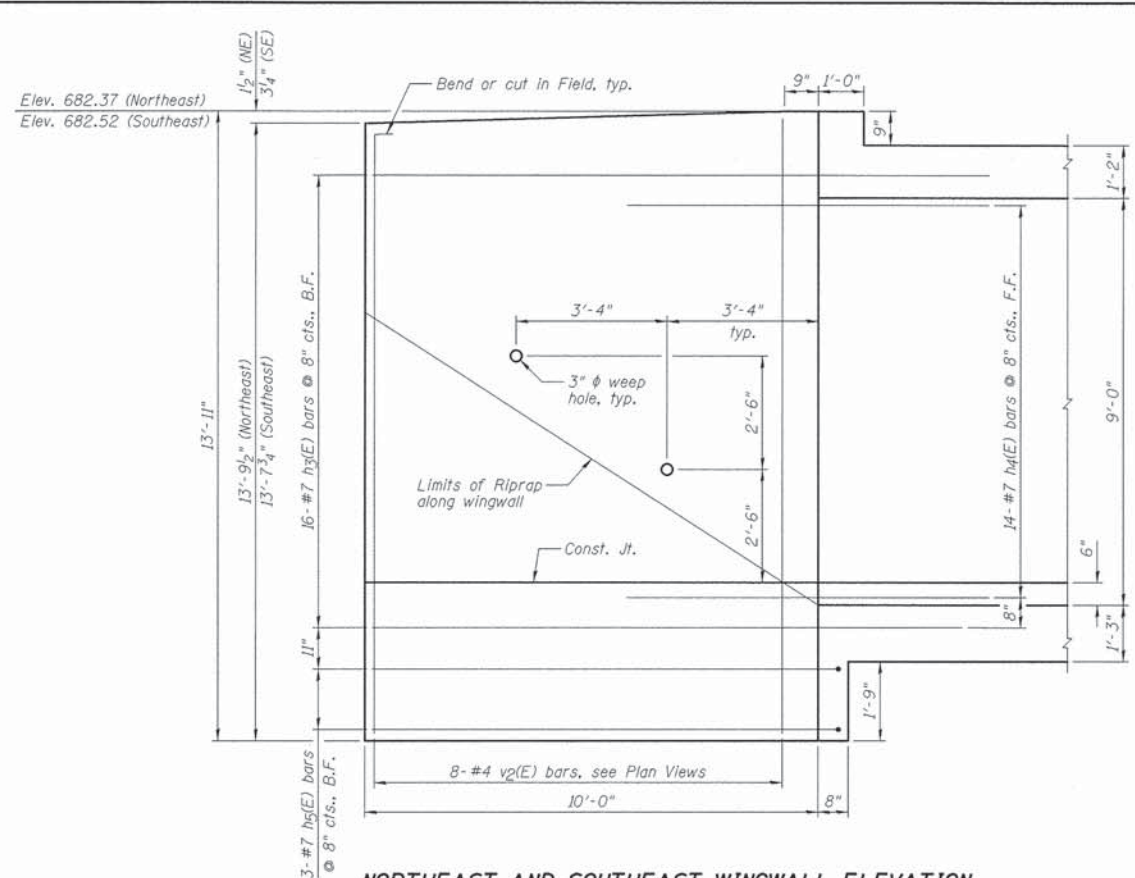
STATE OF ILLINOIS
DEPARTMENT OF TRANSPORTATION

BARREL WALL ELEVATIONS
STRUCTURE NO. 053-5533

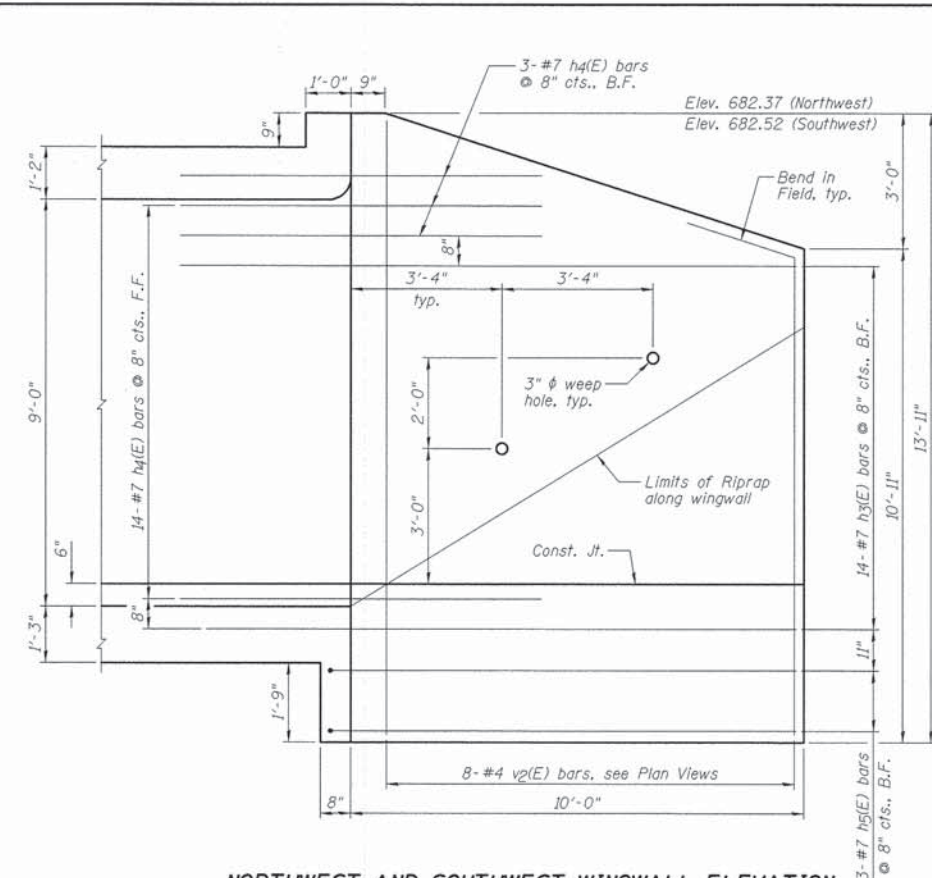
SHEET NO. C4 OF 12 SHEETS

T.R. RTE.	SECTION	COUNTY	TOTAL SHEETS	SHEET NO.
207	10-08125-01-BR	LIVINGSTON	21	11

CONTRACT NO. 87589
ILLINOIS FED. AID PROJECT



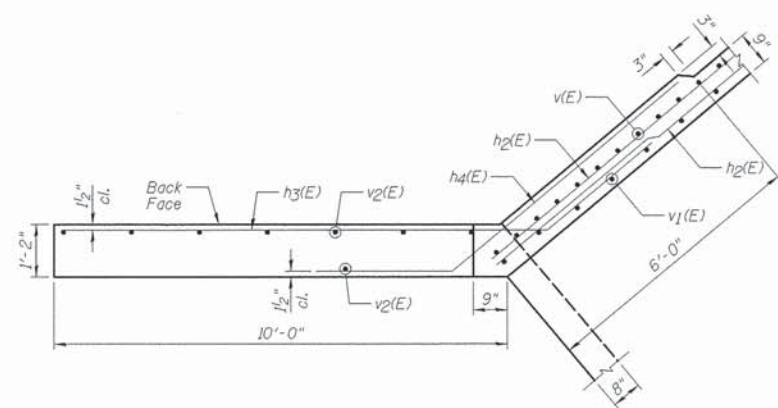
NORTHEAST AND SOUTHEAST WINGWALL ELEVATION



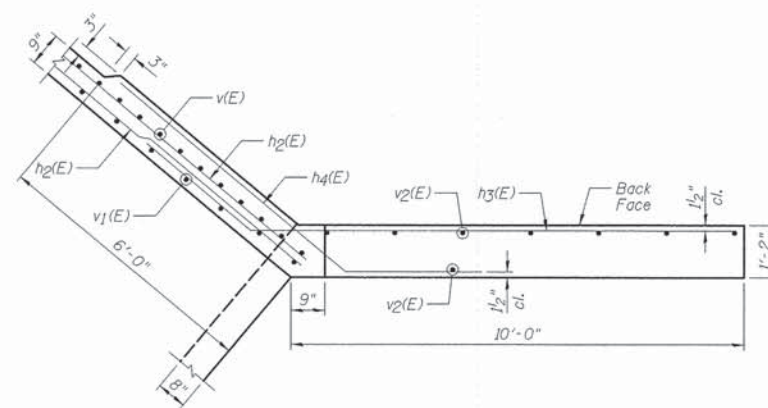
NORTHWEST AND SOUTHWEST WINGWALL ELEVATION

BAR LIST

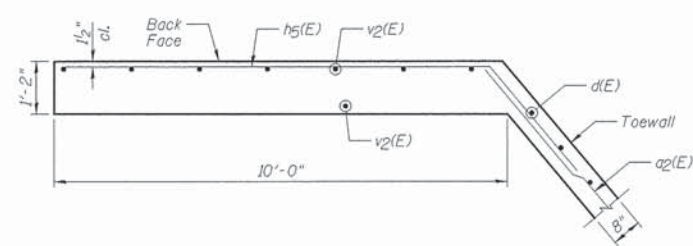
Bar	No.	Size	Length	Shape
h3(E)	60	#7	13'-8"	
h4(E)	62	#7	9'-6"	
h5(E)	12	#7	12'-5"	
v2(E)	32	#4	13'-7"	



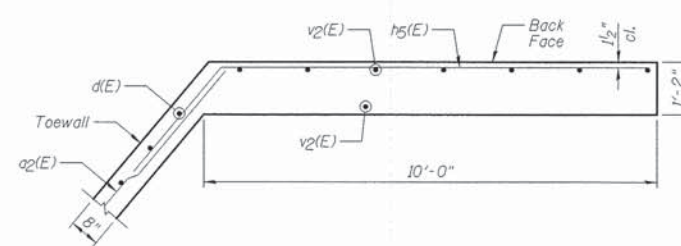
NORTHEAST AND SOUTHEAST WINGWALL UPPER PLAN



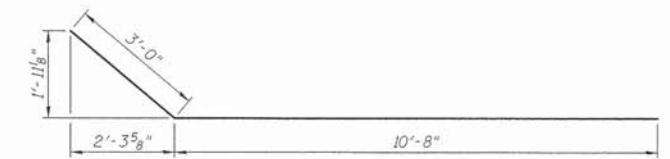
NORTHWEST AND SOUTHWEST WINGWALL UPPER PLAN



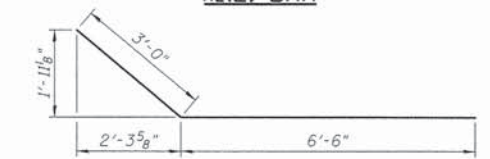
NORTHEAST AND SOUTHEAST WINGWALL LOWER PLAN



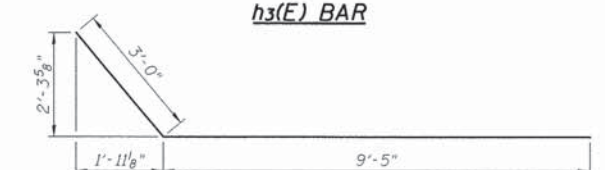
NORTHWEST AND SOUTHWEST WINGWALL LOWER PLAN



h2(E) BAR



h3(E) BAR



h4(E) BAR

NOTES:

- 1.) For Bill of Material, see Sheet C2.
- 2.) B.F. denotes Back Face and F.F. denotes Front Face.

Farnsworth GROUP, INC.
2709 McGraw Drive
Bloomington, Illinois 61704
309/663-8435, 309/663-1571 fax

DESIGNED - TCR	REVISOR
CHECKED - JML	REVISOR
DRAWN - DJM	REVISOR
CHECKED - JML	REVISOR
DATE - 12/10/14	

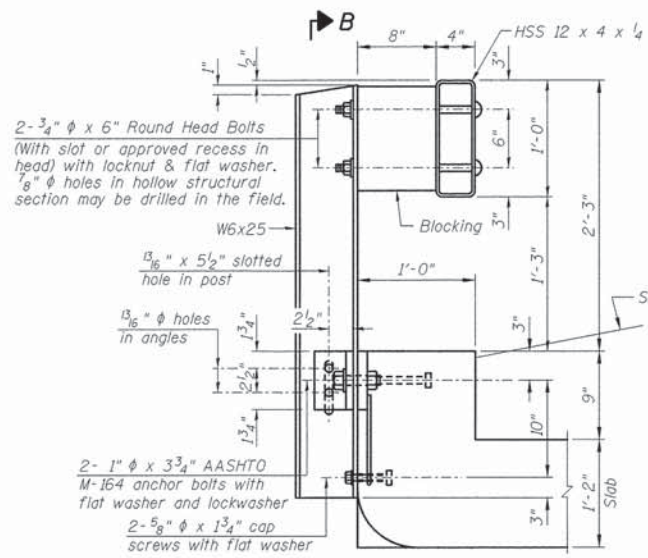
**STATE OF ILLINOIS
DEPARTMENT OF TRANSPORTATION**

**WINGWALL DETAILS
STRUCTURE NO. 053-5533**

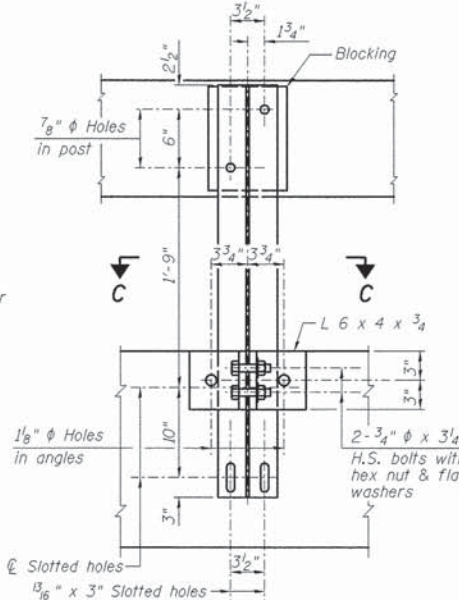
SHEET NO. C5 OF 12 SHEETS

T.R. RTE. 207	SECTION 10-08125-01-BR	COUNTY LIVINGSTON	TOTAL SHEETS 21	SHEET NO. 12
			CONTRACT NO. 87589	

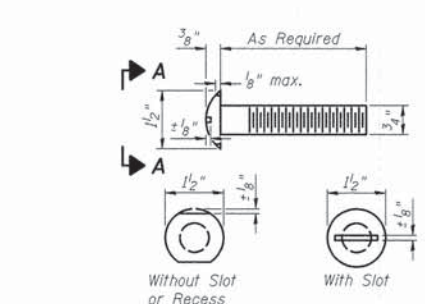
ILLINOIS FED. AID PROJECT



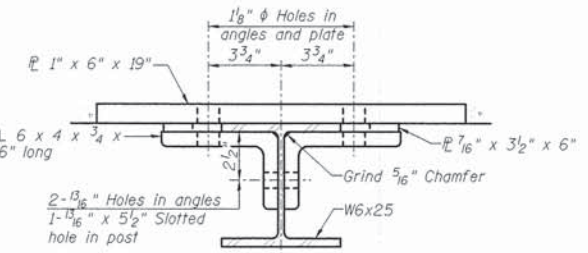
SECTION AT RAIL POST



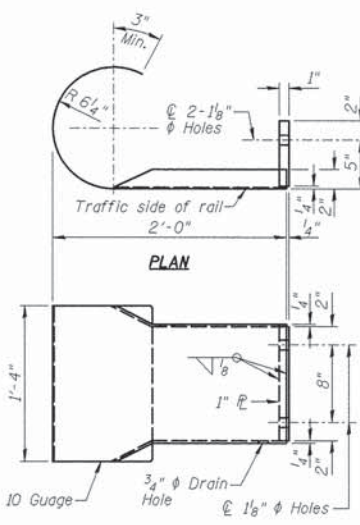
SECTION B-B



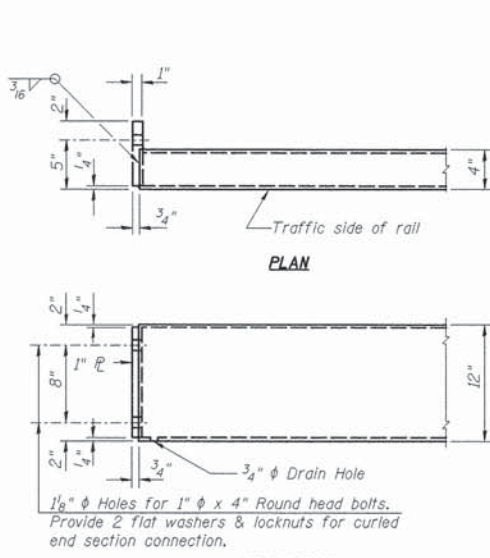
VIEW A-A ROUND HEAD BOLT



SECTION C-C

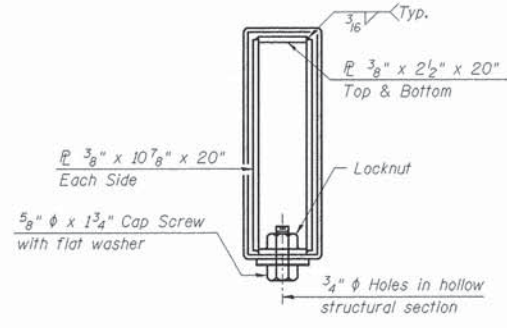


CURLED END SECTION

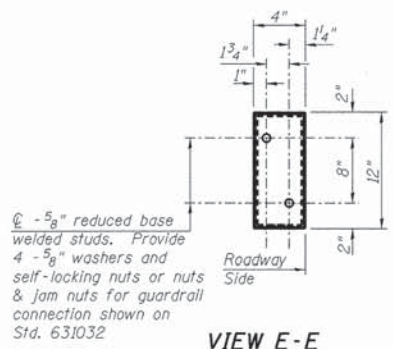


END OF RAIL DETAILS

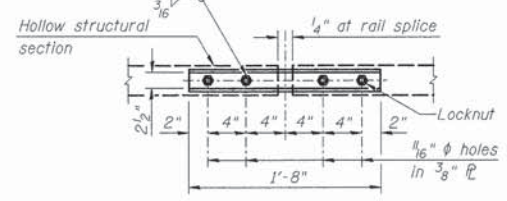
NOTE: The cost of the curled end sections shall be included in the cost of Steel Railing, Type S1.



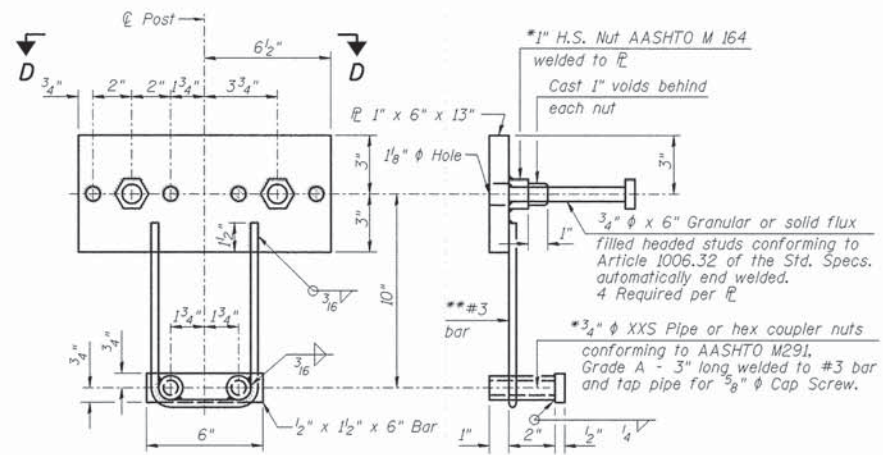
SECTIONS AT RAIL SPLICE



VIEW E-E

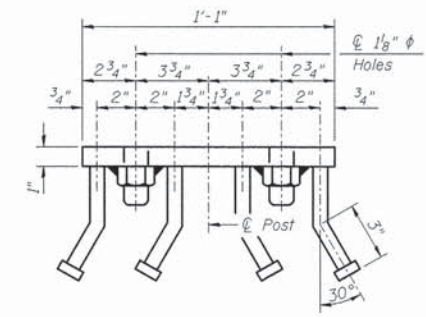


PLAN-BOTT. SPLICE TYPICAL



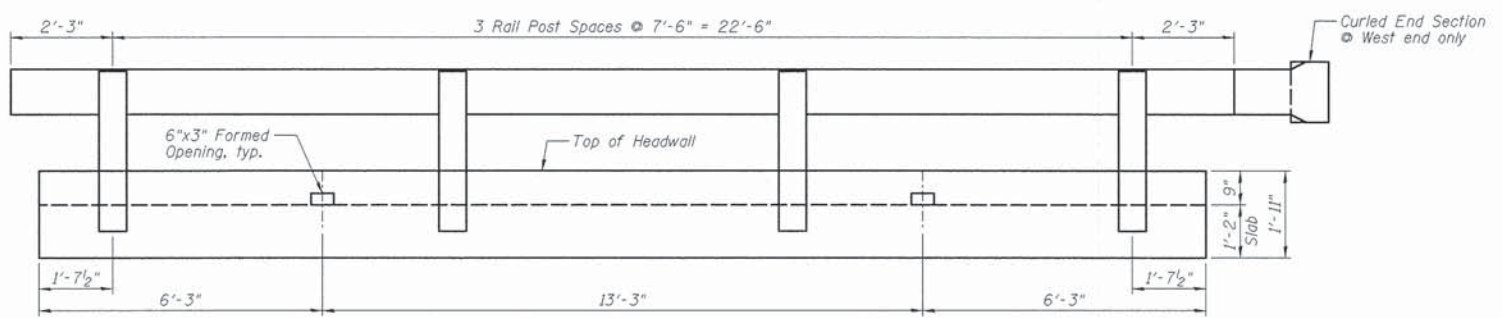
ANCHOR DEVICE

*Threaded areas shall be plugged or blocked off during casting of the headwalls.
**Whenever the lower insert assemblies interfere with reinforcement locations, the #3 bars shall be cut and adjusted in order to allow raising or lowering of the lower inserts. Maximum adjustment not to exceed 1/2 inch.



VIEW D-D

NOTES:
1.) All field drilled holes shall be coated with an approved zinc rich paint before erection.
2.) All steel rail elements shall be galvanized according to Article 509.05 of the Standard Specifications.



RAIL POST SPACING DETAIL

BILL OF MATERIAL

Item	Unit	Quantity
Steel Railing, Type S1	Foot	54

(10'-9" Maximum Post Spacing)

Farnsworth GROUP, INC.
2709 McDraw Drive
Bloomington, Illinois 61704
309/663-8435, 309/663-1571 fax

DESIGNED - TCR
CHECKED - JML
DRAWN - DJM
DATE - 12/10/14

REVIS
REVIS
REVIS
REVIS

STATE OF ILLINOIS
DEPARTMENT OF TRANSPORTATION

STEEL RAILING, TYPE S1
STRUCTURE NO. 053-5533

SHEET NO. C6 OF 12 SHEETS

T.R. RTE.	SECTION	COUNTY	TOTAL SHEETS	SHEET NO.
207	10-08125-01-BR	LIVINGSTON	21	13

CONTRACT NO. 87589
ILLINOIS FED. AID PROJECT

Midwest Testing Services, Inc.
3705 Progress Blvd.
Peru, IL 61354

BORING LOG
Sheet 1 of 2

Client: Farnsworth Group, Inc.
Project Name: Section 10-08125-01-BR
Project Site: Eppards Point Road District
Livingston County, IL.

Boring No. B-1
Surface Elev. 99.9
Auger Depth 28' Rotary Depth NA
Start Date 11/16/13 Finish Date 11/16/13

Location: 7' North of center of road and 21' west of
center of existing bridge

(DEPTH) *ELEV.	DESCRIPTION OF MATERIALS	Graphic Log	Depth in feet	SAMPLES					DRILLED BY	REMARKS
				Sample No.	Sample Type	Qu (TSF)	N Value (Blows)	Bulge / Shear		
99.90									Jeff Safranski Diedrich D-120	
98.90	Stiff Brown Clay		1							
97.90			2							
96.90			3	1	SS	1.4	9	6	19	
95.90			4							
94.90	Medium Brown And Black Clay		5	2	SS	2.7	4	B	24	
93.90			6							
92.90			7							
91.90			8	3	SS	1.0	6	B	21	
90.90	Stiff Brown And Black Clay		9							
89.90			10							
88.90			11	4	SS	1.2	7	B	23	
87.90			12							
86.90	Very Stiff Brownish Black And Gray Clay		13	5	SS	2.1	13	B	17	
85.90			14							
84.90			15							
83.90	Very Stiff Brown Reddish Brown Clay With Sand Seams		16	6	SS	2.7	21	B	15	
82.90			17							
81.90			18	7	SS	3.0	22	B	12	
80.90			19							
79.90	Very Stiff Gray Clay With Limestone Fragments		20	8	SS	2.8	21	B	12	

Groundwater Data: Static water level after auger removal - Elevation 88.0.
Comments: **Assumed center of existing bridge deck as 100.0.*

Midwest Testing Services, Inc.
3705 Progress Blvd.
Peru, IL 61354

BORING LOG
Sheet 2 of 2

Client: Farnsworth Group, Inc.
Project Name: Section 10-08125-01-BR
Project Site: Eppards Point Road District
Livingston County, IL.

Boring No. B-1
Surface Elev. 99.90
Auger Depth 28' Rotary Depth NA
Start Date 11/16/13 Finish Date 11/16/13

Location: 7' North of center of road and 21' west of
center of existing bridge

(DEPTH) *ELEV.	DESCRIPTION OF MATERIALS	Graphic Log	Depth in feet	SAMPLES					DRILLED BY	REMARKS
				Sample No.	Sample Type	Qu (TSF)	N Value (Blows)	Bulge / Shear		
78.90										Jeff Safranski Diedrich D-120
77.90			22							
76.90			23	9	SS	2.0	14	B	16	
75.90	Very Stiff Gray Clay With Limestone Fragments		24							
74.90			25							
73.90			26	10	SS	2.2	16	B	15	
72.90			27							
71.90			28							
70.90	Refusal Limestone Bedrock		29							
69.90			30							
68.90			31							
67.90			32							
66.90			33							
65.90			34							
64.90			35							
63.90			36							
62.90			37							
61.90			38							
60.90			39							
59.90			40							
58.90			41							

Groundwater Data: Static water level after auger removal - Elevation 88.0.
Comments: **Assumed center of existing bridge deck as 100.0.*

Midwest Testing Services, Inc.
3705 Progress Blvd.
Peru, IL 61354
Phone: 815-223-6696
Fax: 815-223-6659
e-mail: mts37@comcast.net

BORING LOG
Sheet 1 of 2

Client: Farnsworth Group, Inc.
Project Name: Section 10-08125-01-BR
Project Site: Eppards Point Road District
Livingston County, IL.

Boring No. B-2
Surface Elev. 100.0
Auger Depth 27.5' Rotary Depth NA
Start Date 11/16/13 Finish Date 11/16/13

Location: 9' South of center of road and 22' east of
center of existing bridge

(DEPTH) *ELEV.	DESCRIPTION OF MATERIALS	Graphic Log	Depth in feet	SAMPLES					DRILLED BY	REMARKS
				Sample No.	Sample Type	Qu (TSF)	N Value (Blows)	Bulge / Shear		
99.00	Stiff Brown Clay		1						Jeff Safranski Diedrich D-120	
98.00			2							
97.00	Medium Black Clay		3	1	SS	1.5	8	B	20	
96.00			4							
95.00	Stiff Brown Clay		5	2	SS	0.9	5	B	23	
94.00			6							
93.00	Stiff Brownish Gray Clay		7	3	SS	1.3	7	B	20	
92.00			8							
91.00	Stiff Brownish Gray Clay		9	4	SS	1.6	8	B	21	
90.00			10							
89.00	Very Stiff Brownish Gray Clay With Sand Seams		11	5	SS	1.2	6	B	22	
88.00			12							
87.00	Very Stiff Olive Brown Clay		13	6	SS	2.7	20	B	15	
86.00			14							
85.00			15	7	SS	3.4	25	B	13	
84.00			16							
83.00			17	8	SS	3.0	23	B	12	
82.00			18							
81.00			19							
80.00			20							

Groundwater Data: Static water level after auger removal - Elevation 88.0.
Comments: **Assumed center of existing bridge deck as 100.0.*

Midwest Testing Services, Inc.
3705 Progress Blvd.
Peru, IL 61354
Phone: 815-223-6696
Fax: 815-223-6659
e-mail: mts37@comcast.net

BORING LOG
Sheet 2 of 2

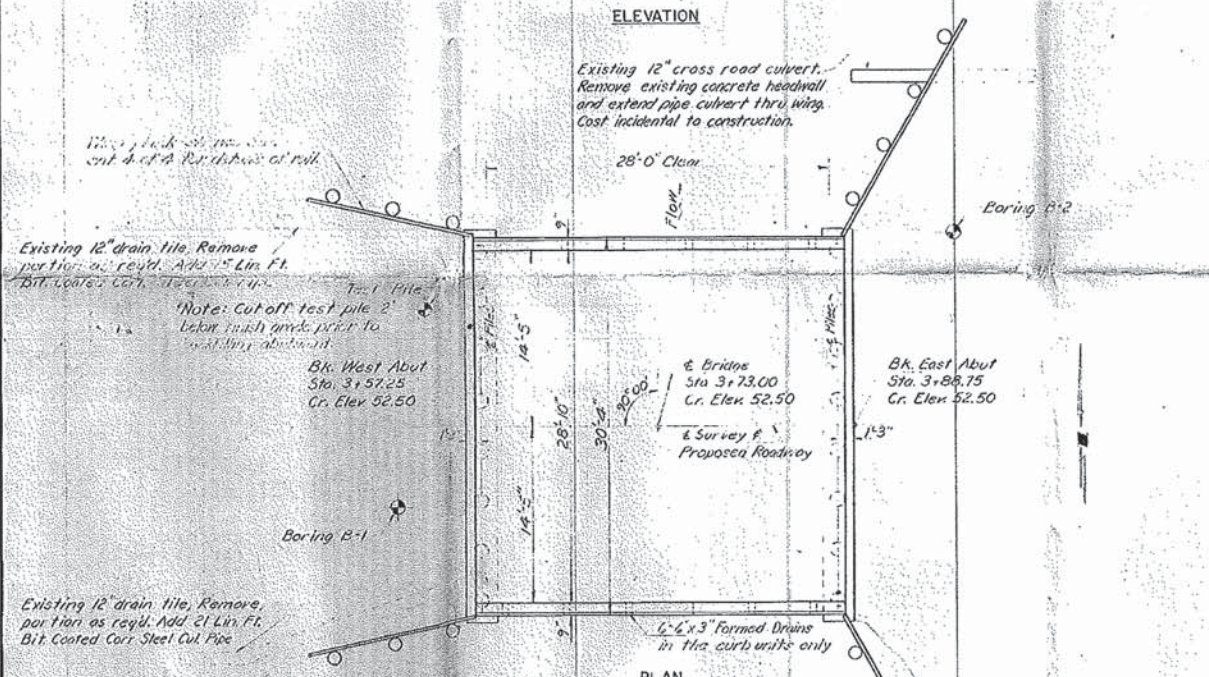
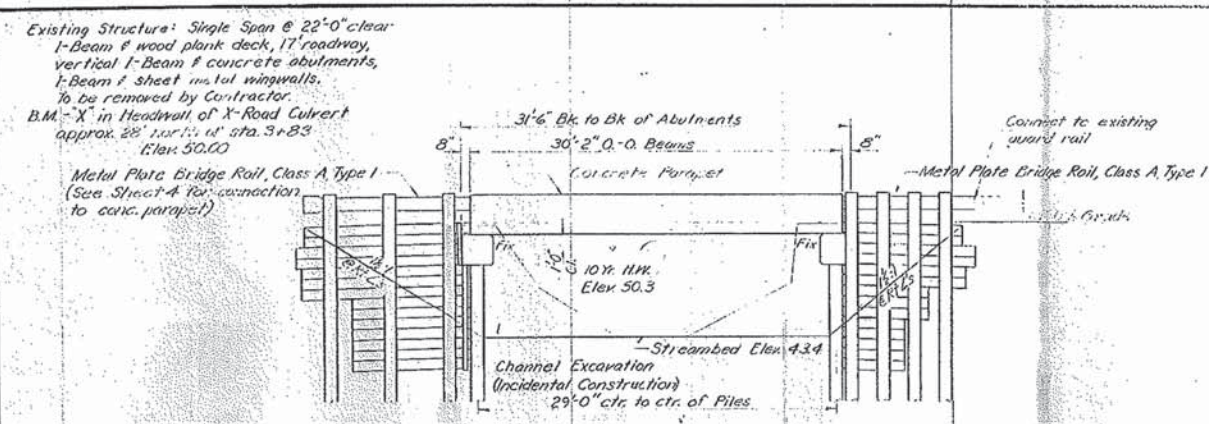
Client: Farnsworth Group, Inc.
Project Name: Section 10-08125-01-BR
Project Site: Eppards Point Road District
Livingston County, IL.

Boring No. B-2
Surface Elev. 100.0
Auger Depth 27.5' Rotary Depth NA
Start Date 11/16/13 Finish Date 11/16/13

Location: 9' South of center of road and 22' east of
center of existing bridge

(DEPTH) *ELEV.	DESCRIPTION OF MATERIALS	Graphic Log	Depth in feet	SAMPLES					DRILLED BY	REMARKS
				Sample No.	Sample Type	Qu (TSF)	N Value (Blows)	Bulge / Shear		
79.00	Very Stiff Gray Clay With Limestone Fragments		21	9	SS	2.2	13	B	14	
78.00			22							
77.00	Refusal Limestone Bedrock		23	10	SS	2.1	13	B	15	
76.00			24							
75.00			25							
74.00			26							
73.00			27							
72.00			28							
71.00			29							
70.00			30							
69.00			31							
68.00			32							
67.00			33							
66.00			34							
65.00			35							
64.00			36							
63.00			37							
62.00			38							
61.00			39							
60.00			40							
59.00			41							

Groundwater Data: Static water level after auger removal - Elevation 88.0.
Comments: **Assumed center of existing bridge deck as 100.0.*



WATERWAY DATA

Drainage Area	56.90 acres	8.7 mi ²
Present Opening	110 sq. ft.	
Required Opening	193 sq. ft.	
Proposed Opening	193 sq. ft.	
Design Discharge	724 cfs (10 Yr.)	
Created Head	0.5 ft	
100 Yr. Discharge	1405 cfs	
Created Head	negligible	

*Control by low water road

LETTERING FOR NAME PLATE

HICKORY CREEK
SEC. 77-08125-00-BR
BUILT 1971
EPPARDS POINT ROAD DISTRICT
LIVINGSTON COUNTY
LOADING HS20
STR. NO. 053-4021

Locate Name Plate at Southwest Corner of Bridge. See Standard P113.

GENERAL NOTES

For Timber Structures see Section 510 of the Standard Specifications.

For Backfill behind abutments held at the top by the superstructure, see Article 502.11 of the Standard Specifications. Class K Concrete shall be used throughout.

Abutment piles shall be driven a minimum of 10 feet below streambed.

Wing piles shall be driven a minimum of 10 feet into undisturbed earth.

For Items: Material Piles, Entry Piles and Boring Data, see Special Provisions.

The Standard Specifications adopted by the Department of Transportation July 1, 1976 shall apply to this work.

All reinforcement bars to be lapped as shown on plans.

All lumber shall be creosoted and full sawn rough.

Deadmen shall be bedded against undisturbed earth.

One timber test pile shall be driven near the west abutment before ordering the piles.



TOTAL BILL OF MATERIAL

ITEM	SUPER	SUB	TOTAL
Removal of Existing Structures			1
Class X Concrete	cu. Yd.	4.1	16.8
Precast Prestressed Concrete Deck Beams, 11" Sq. Ft.		915	915
Metal Plate Bridge Rail, Class A, Type 1	Lin. Ft.	76	76
Headwall Timber	F.B.M.	4150	4150
Hardware	Lb.	360	360
Reinforcement Bars	Lb.	1737	2227
Preexisting Crossed Piles, up to 20'	Lin. Ft.	300	300
Preexisting Crossed Piles, 20' to 35'	Lin. Ft.	88	305
Driving Timber Piles	Lin. Ft.	52.3	628
Test Pile, Timber	Each	1	1
Metal Shims	Each	1	30
Various Nuts	Each	1	1
Pipe Drains, 12" Dia. Bituminous Coated Corrugated Steel Culvert Pipe	Lin. Ft.	-	36

APPROVED
FOR STRUCTURAL ADEQUACY ONLY
AS CORRECTED
Engineer of Bridge & Traffic Structures

DESIGN STRESSES

$E = 1,400,000$ psi
 $f_c = 20,000$ psi Field Units
 $n = 8.5$

$f_c = 5,000$ psi
 $f_s = 40,000$ psi (Reinf)
 $f_s = 270,000$ psi (2 Strand)
 $f_s = 180,000$ psi (3 Strand)
 $n = 8$

Design Specifications - AASHTO 1973 & Interims as applicable.

Loading HS20-44

Approved For Structural Adequacy

Illinois Structural No. 2675

Illinois Professional No. 21190

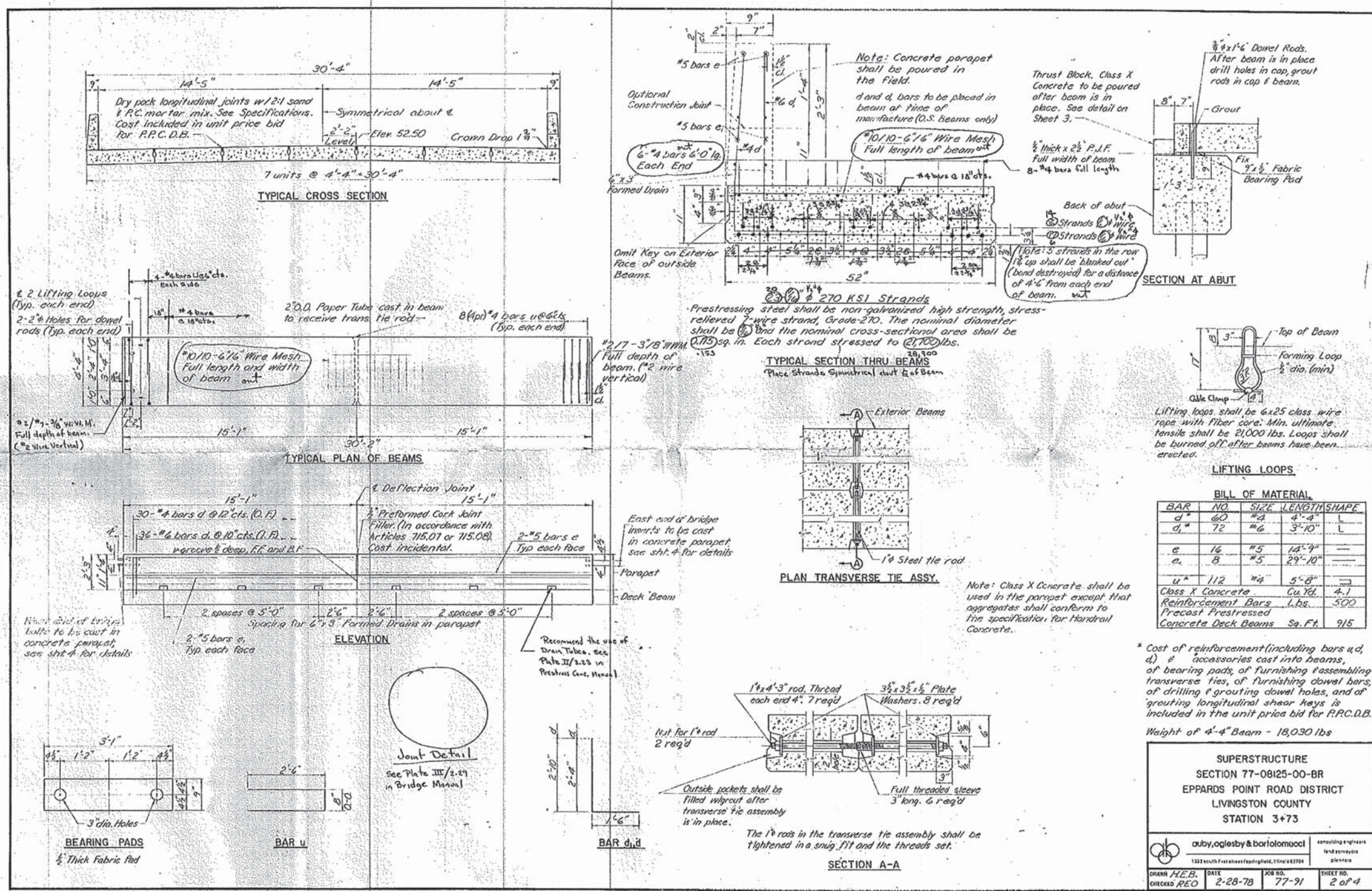
T.B.P.

GENERAL PLAN & ELEVATION
SECTION 77-08125-00-BR
EPPARDS POINT ROAD DISTRICT
LIVINGSTON COUNTY
STATION 3+73

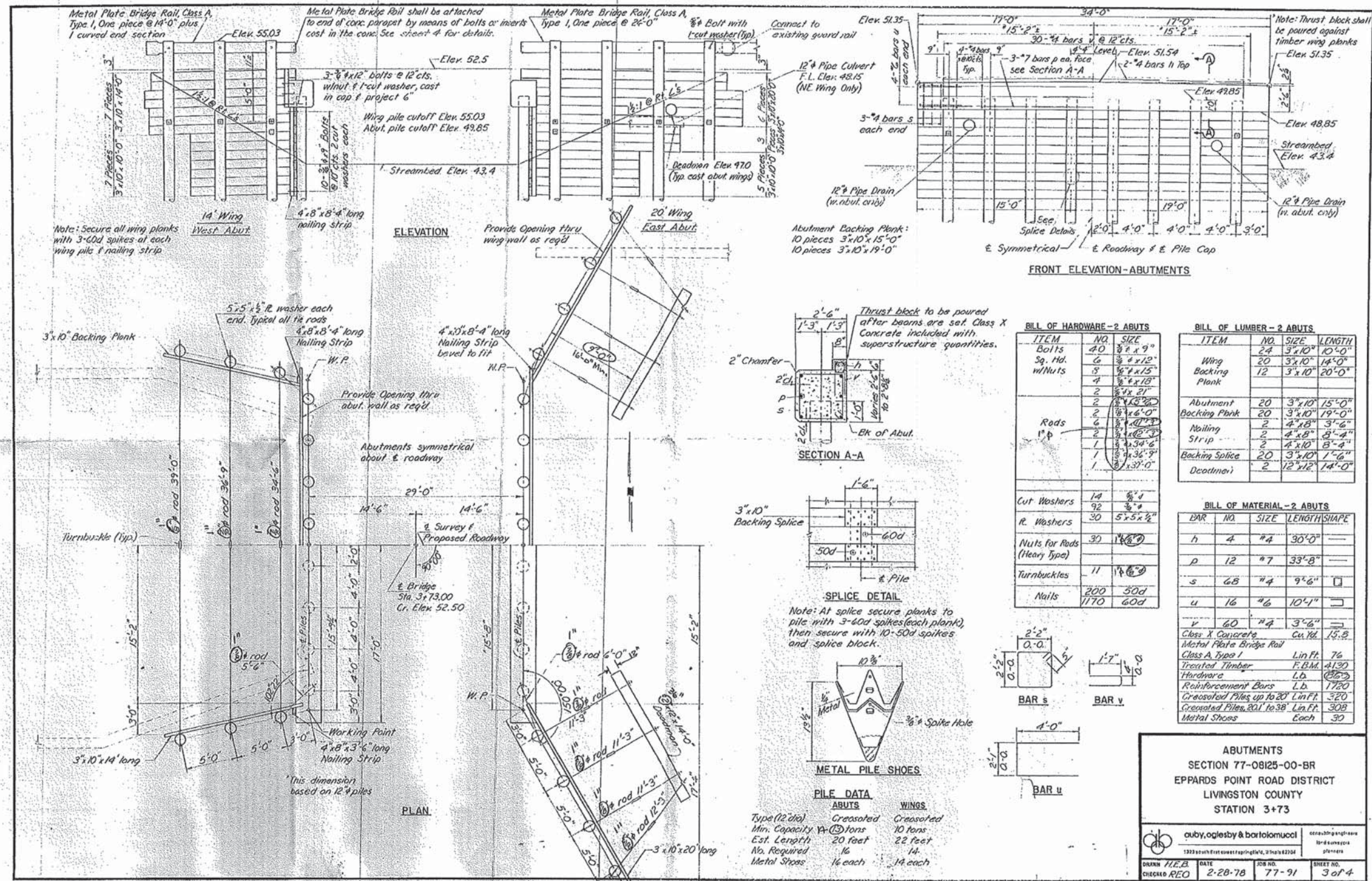
duffy, ogilby & bartolomucci

DATE: 2-28-78 JOB NO: 77-91 SHEET NO: 1 of 4

FOR INFORMATIONAL USE ONLY



FOR INFORMATIONAL
 USE ONLY



BILL OF HARDWARE - 2 ABUTS

ITEM	NO.	SIZE
Bolts	40	3/4" x 9"
Sq. Hd. w/Nuts	6	3/4" x 12"
	8	3/4" x 15"
	4	3/4" x 18"
	2	3/4" x 21"
Rods	2	1/2" x 15'-0"
	2	1/2" x 19'-0"
	6	1/2" x 15'-0"
	2	1/2" x 19'-0"
	1	1/2" x 36'-9"
	1	1/2" x 37'-0"
Cut Washers	14	3/4"
R. Washers	92	3/4"
Nuts for Rods (Heavy Type)	30	1 1/2"
Turnbuckles	11	1 1/2"
Nails	200	50d
	1170	60d

BILL OF LUMBER - 2 ABUTS

ITEM	NO.	SIZE	LENGTH
Wing Backing Plank	24	3" x 10"	10'-0"
	20	3" x 10"	14'-0"
	12	3" x 10"	20'-0"
Abutment Backing Plank	20	3" x 10"	15'-0"
	20	3" x 10"	19'-0"
Nailing Strip	2	4" x 8"	3'-6"
	2	4" x 8"	3'-4"
Backing Splice	20	3" x 10"	1'-6"
Deadmen	2	12" x 12"	14'-0"

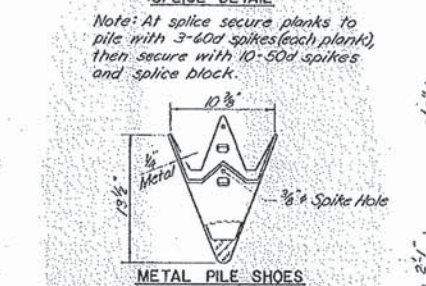
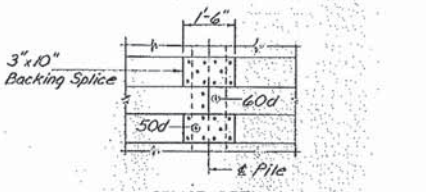
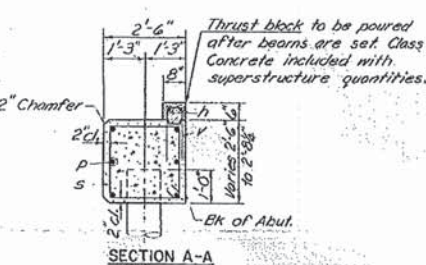
BILL OF MATERIAL - 2 ABUTS

BAR	NO.	SIZE	LENGTH SHAPE
h	4	#4	30'-0"
p	12	#7	33'-8"
s	68	#4	9'-6"
u	16	#6	10'-1"
v	60	#4	3'-6"
Class X Concrete		Cu. Yd.	15.8
Metal Plate Bridge Rail Class A, Type 1		Lin. Ft.	76
Treated Timber		F.B.M.	4130
Hardware		Lb.	1865
Reinforcement Bars		Lb.	1720
Crossed Piles up to 20' Lin. Ft.			320
Grouted Piles 20' to 38' Lin. Ft.			308
Metal Shoes		Each	30

ABUTMENTS
SECTION 77-08125-00-BR
EPPARDS POINT ROAD DISTRICT
LIVINGSTON COUNTY
STATION 3+73

Drawn by: **auby, oglesby & bartolomucci**
Checked by: **REO**

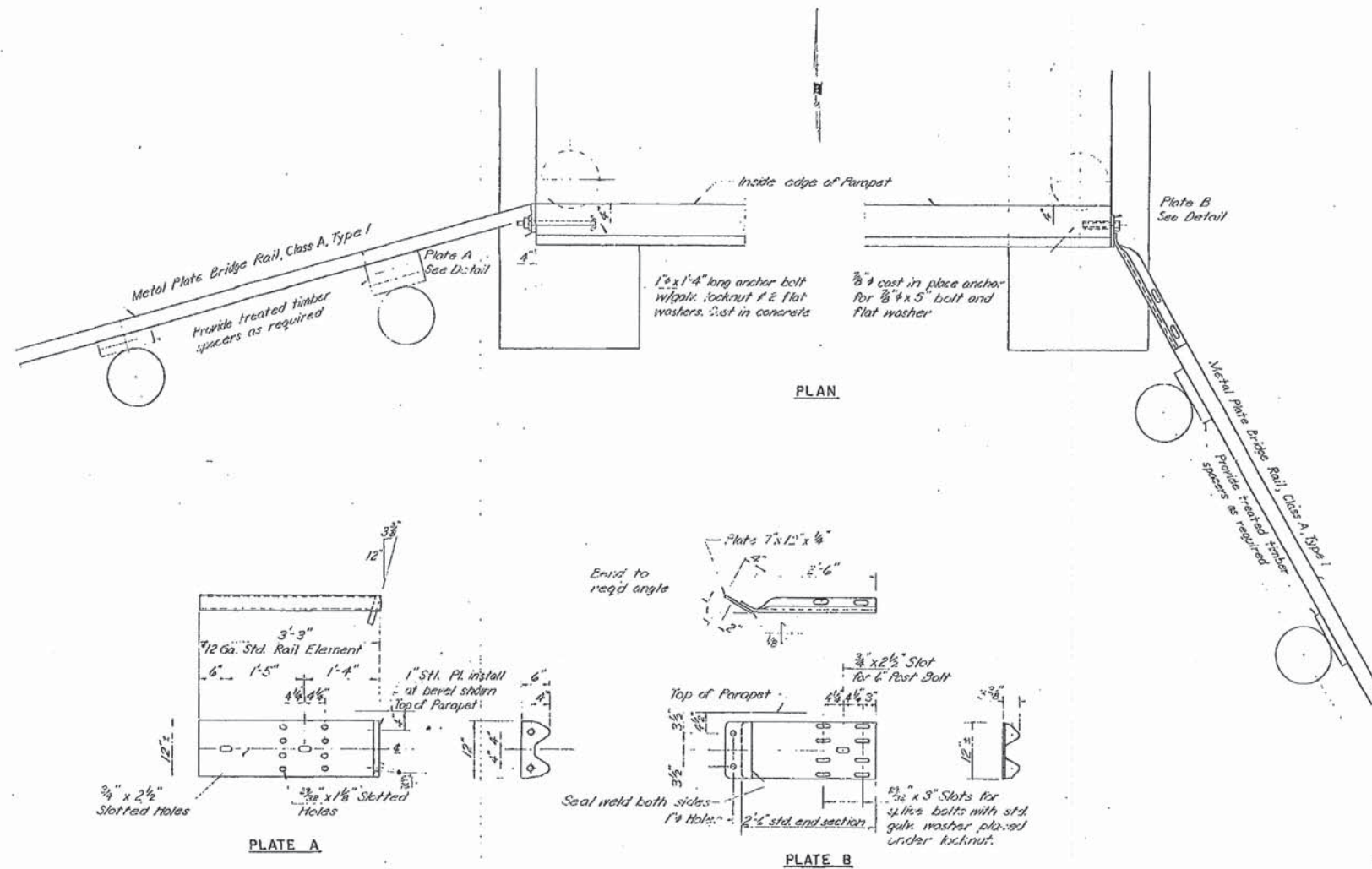
DATE: 2-28-78
JOB NO.: 77-91
SHEET NO.: 3 of 4



PILE DATA

ABUTS	WINGS
Type (12 dia)	Crossed
Min. Capacity	10 tons
Est. Length	20 feet
No. Required	14
Metal Shoes	14 each

FOR INFORMATIONAL USE ONLY



PLAN

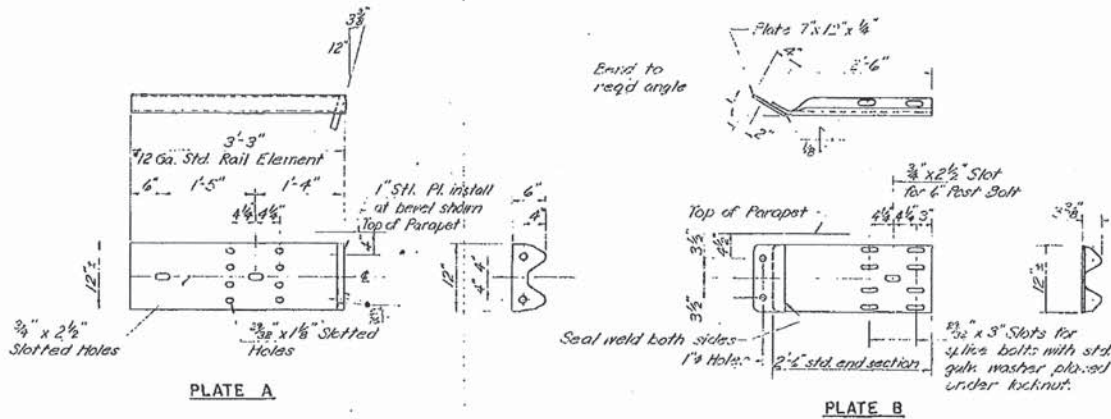


PLATE A

PLATE B

Cost of Plates A and B and required hardware shall be considered incidental to item Metal Plate - Bridge Rail, Class A, Type 1.

RAIL CONNECTIONS
SECTION 77-08125-00-BR
EPPARDS POINT ROAD DISTRICT
LIVINGSTON COUNTY
STATION 3+73

coby, oglesby & bartolomucci
 consulting engineers and surveyors
 1322 South First Street / Springfield, Illinois 62764
 phone 217-223-1100
 fax 217-223-1101

DRAWN H.E.B.	DATE 2-28-78	JOB NO. 77-91	SHEET NO. 4 of 4
CHECKED RED			

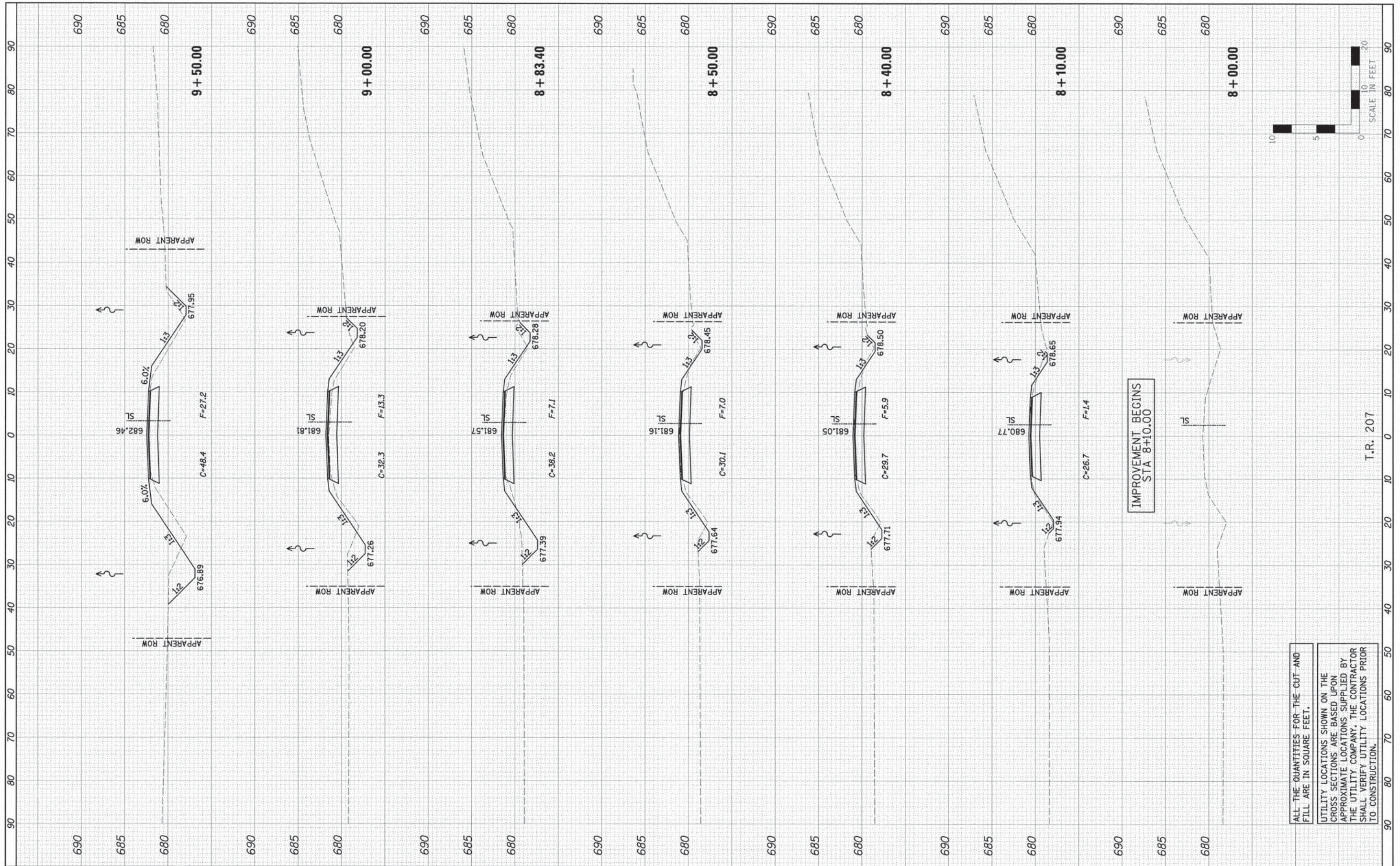
FOR INFORMATIONAL
USE ONLY

DESIGNED - TCR	REVISED
CHECKED - JML	REVISED
DRAWN - DJM	REVISED
CHECKED - JML	REVISED
DATE - 12/10/14	

T.R. 207	SECTION 10-08125-01-BR	COUNTY LIVINGSTON	TOTAL SHEETS 21	SHEET NO. 19
CONTRACT NO. 87589				
ILLINOIS FED. AID PROJECT				

FILED	DATE
SURVEYED	BY
NOTE BOOK	
AREAS	
CHECKED	

ORIGINAL	DATE
SURVEYED	BY
NOTE BOOK	
AREAS	
CHECKED	



ALL THE QUANTITIES FOR THE CUT AND FILL ARE IN SQUARE FEET.
 UTILITY LOCATIONS SHOWN ON THE CROSS SECTIONS ARE BASED UPON APPROXIMATE LOCATIONS SUPPLIED BY THE UTILITY COMPANY. THE CONTRACTOR SHALL VERIFY UTILITY LOCATIONS PRIOR TO CONSTRUCTION.

Farnsworth GROUP, INC.
 2709 McGraw Drive
 Bloomington, Illinois 61704
 309/663-6435, 309/663-1571 fax

DESIGNED - JJO
 CHECKED - MSW
 DRAWN - JJO
 CHECKED - MSW
 DATE - 12/10/14

REVISED -
 REVISED -
 REVISED -
 REVISED -

**STATE OF ILLINOIS
 DEPARTMENT OF TRANSPORTATION**

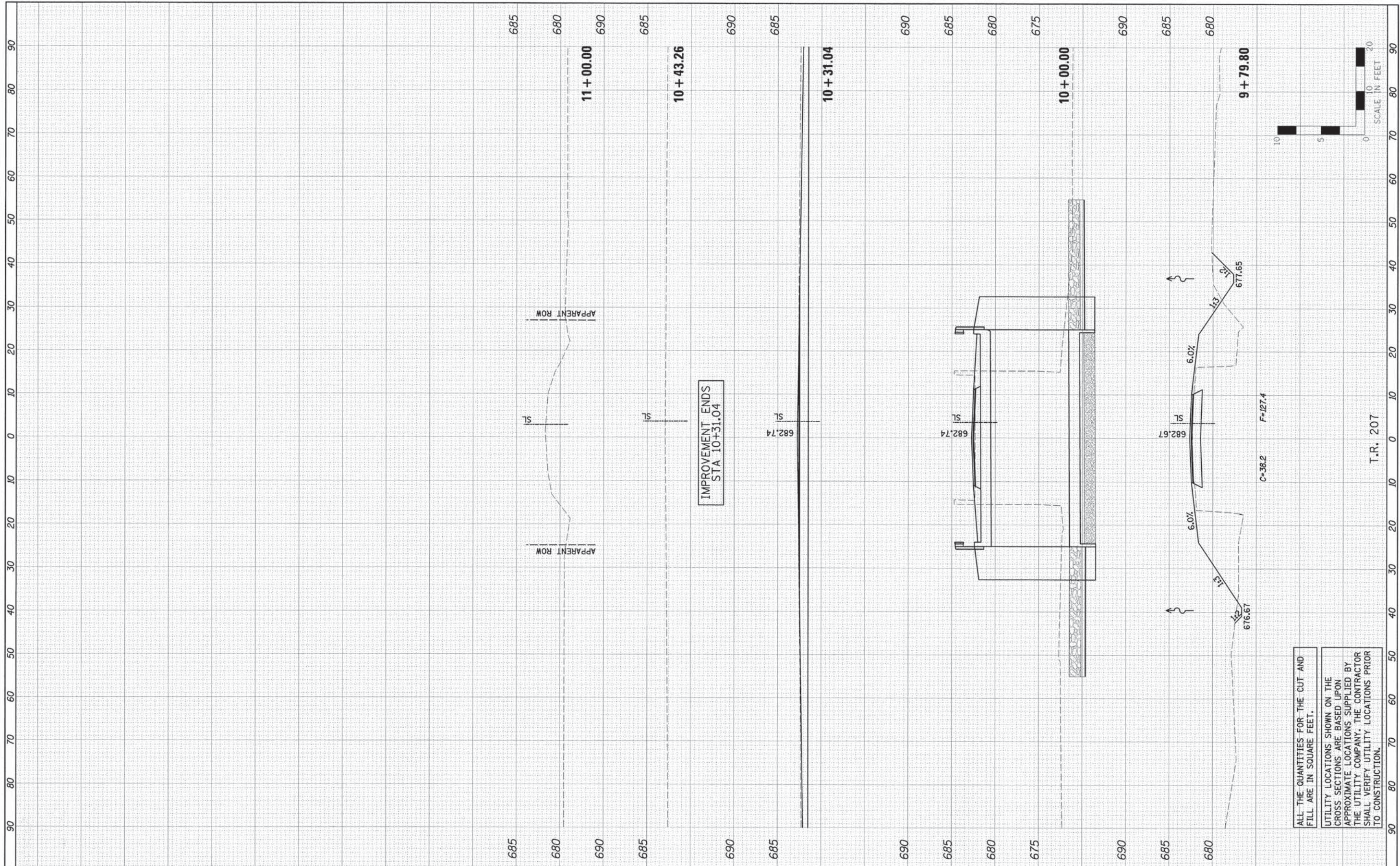
CROSS SECTIONS

SCALE: SHEET OF SHEETS STA. 8+00.00 TO STA. 9+50.00

T.R. RTE. 207	SECTION 10-08125-01-BR	COUNTY LIVINGSTON	TOTAL SHEETS 21	SHEET NO. 20
CONTRACT NO. 87589			ILLINOIS FED. AID PROJECT	

FINAL SURVEY	REVISED	BY	DATE
NOTE BOOK	PLOTTED		
AREAS CHECKED	TEMPLATE		
NO.	AREAS		
	AREAS CHECKED		

ORIGINAL SURVEY	REVISED	BY	DATE
NOTE BOOK	PLOTTED		
AREAS CHECKED	TEMPLATE		
NO.	AREAS		
	AREAS CHECKED		



ALL THE QUANTITIES FOR THE CUT AND FILL ARE IN SQUARE FEET.

UTILITY LOCATIONS SHOWN ON THE CROSS SECTIONS ARE BASED UPON APPROXIMATE LOCATIONS SUPPLIED BY THE UTILITY COMPANY. THE CONTRACTOR SHALL VERIFY UTILITY LOCATIONS PRIOR TO CONSTRUCTION.

Farnsworth GROUP, INC.
2709 McGraw Drive
Bloomington, Illinois 61704
309/663-8435, 309/663-1571 fax

DESIGNED - JJ0
CHECKED - MSW
DRAWN - JJ0
CHECKED - MSW

DATE - 12/10/14

REVISED -
REVISED -
REVISED -
REVISED -

**STATE OF ILLINOIS
DEPARTMENT OF TRANSPORTATION**

CROSS SECTIONS

SCALE: SHEET OF SHEETS STA. 9+79.80 TO STA. 11+00.00

T.R. RTE. 207	SECTION 10-08125-01-BR	COUNTY LIVINGSTON	TOTAL SHEETS 21	SHEET NO. 21
CONTRACT NO. 87589				
ILLINOIS FED. AID PROJECT				