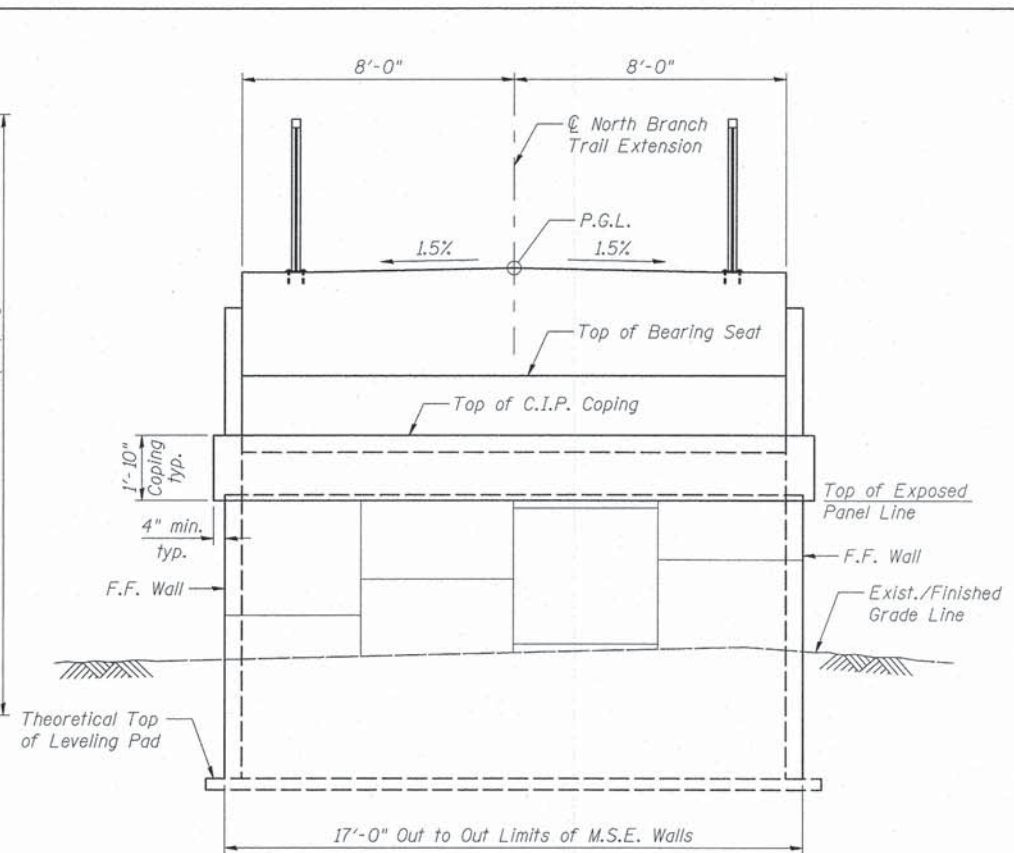
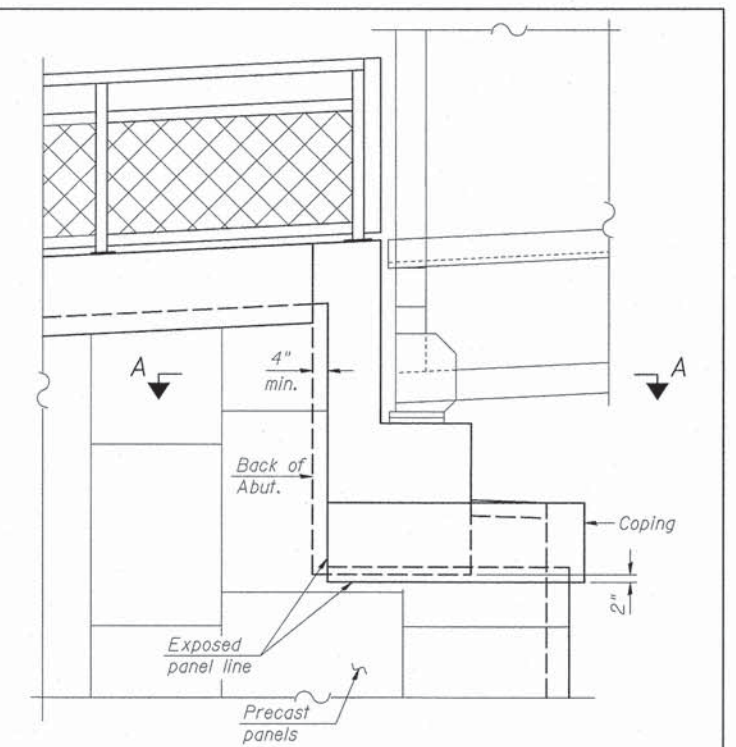


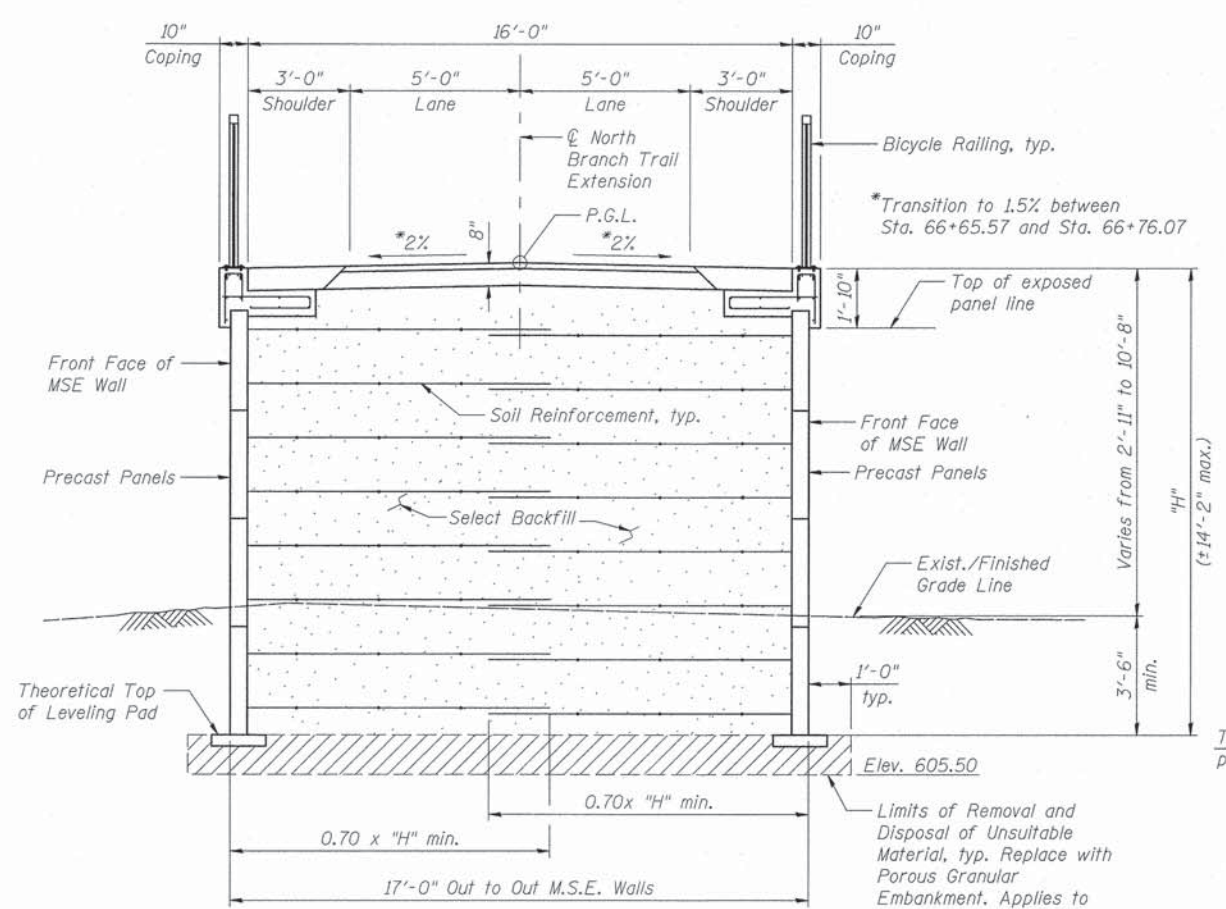
PLAN AT WEST ABUTMENT



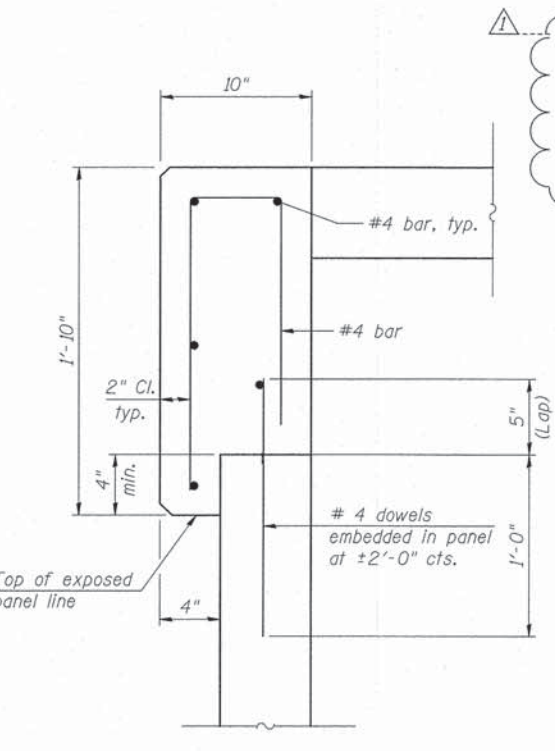
WEST ABUTMENT ELEVATION
(Showing M.S.E. Wall Details)



WEST ABUTMENT END VIEW
Looking North
Pile not shown for clarity

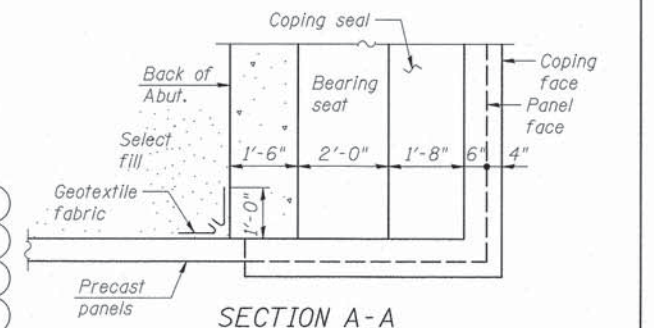


SECTION THRU M.S.E. WALL

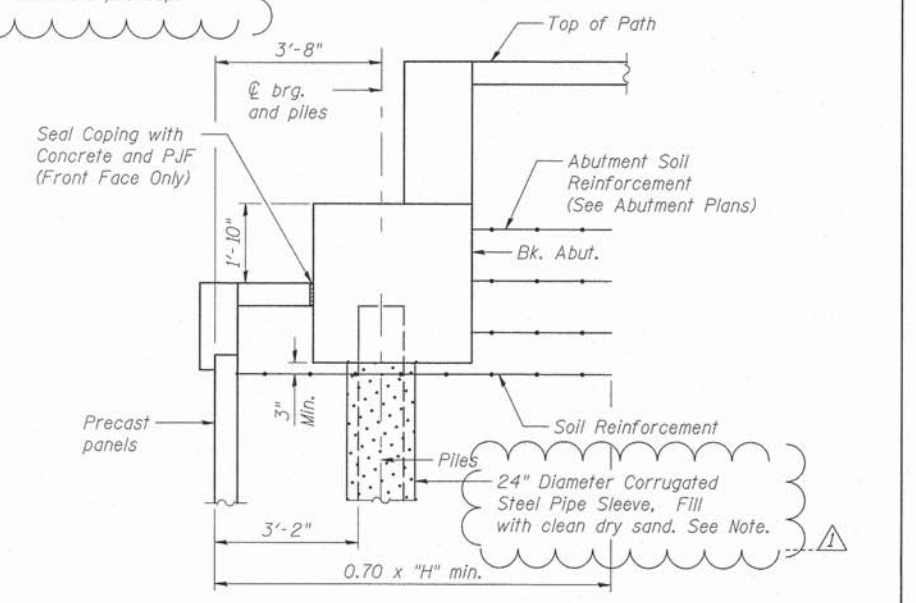


COPING DETAIL AT ABUTMENTS

PIPE SLEEVE NOTE:
Corrugated galvanized steel pipe, 10 gage minimum, shall extend from 1'-0" below the top of leveling pad to the bottom of the concrete pile cap.



SECTION A-A



SECTION THRU ABUTMENT

FILE NO. URS 100 SOUTH WACKER DRIVE, SUITE 500 CHICAGO, IL 60606 (312) 859-1000	USER NAME =	DESIGNED - BAR	REVISOR - 02/10/2015	STATE OF ILLINOIS DEPARTMENT OF TRANSPORTATION	NORTH BRANCH TRAIL EXTENSION MSE WALL DETAILS	F.A.I. RTE.	SECTION	COUNTY	TOTAL SHEETS	SHEET NO.
	PLOT SCALE =	CHECKED - MBQ	REVISOR			08-F3000-21-BT	COOK	129	60	
	PLOT DATE =	DRAWN - BAR	REVISOR			CONTRACT NO. 61A86				
		CHECKED - MBQ	REVISOR			ILLINOIS FED. AID PROJECT				