

90/10 FED/STATE

CONSTR. CODE

6-00745-0000

CODE NO.	ITEM	UNIT	TOTAL QUANTITY	ROADWAY	
				0005	RURAL
35501300	HOT-MIX ASPHALT BASE COURSE, 4"	SO YD	38020	38020	
35501328	HOT-MIX ASPHALT BASE COURSE, 11"	SO YD	22812	22812	
40600275	BITUMINOUS MATERIALS (PRIME COAT)	POUND	38495	38495	
40600625	LEVELING BINDER (MACHINE METHOD), N50	TON	5322.8	5322.8	
40600982	HOT-MIX ASPHALT SURFACE REMOVAL - BUTT JOINT	SO YD	1778	1778	
44000162	HOT-MIX ASPHALT SURFACE REMOVAL, 3 1/4"	SO YD	114060	114060	
44000178	HOT-MIX ASPHALT SURFACE REMOVAL, 7 1/4"	SO YD	38020	38020	
44004250	PAVED SHOULDER REMOVAL	SO YD	22812	22812	
44200529	CLASS A PATCHES, TYPE II, 8 INCH	SO YD	110.9	110.9	
44200533	CLASS A PATCHES, TYPE III, 8 INCH	SO YD	116.6	116.6	
44200535	CLASS A PATCHES, TYPE IV, 8 INCH	SO YD	208.4	208.4	
44213000	PATCHING REINFORCEMENT	SO YD	457.2	457.2	
44213200	SAW CUTS	FOOT	1892.5	1892.5	
44213206	TIE BARS 5/8"	EACH	462	462	

90/10 FED/STATE

CONSTR. CODE

6-00745-0000

CODE NO.	ITEM	UNIT	TOTAL QUANTITY	ROADWAY	
				0005	RURAL
48102100	AGGREGATE WEDGE SHOULDER, TYPE B	TON	5196	5196	
63500105	DELINEATORS	EACH	86	86	
64200116	SHOULDER RUMBLE STRIPS, 16 INCH	FOOT	68436	68436	
67000400	ENGINEER'S FIELD OFFICE, TYPE A	CAL MO	12	12	
67100100	MOBILIZATION	L SUM	1	1	
70100700	TRAFFIC CONTROL AND PROTECTION, STANDARD 701406	L SUM	1	1	
70100800	TRAFFIC CONTROL AND PROTECTION, STANDARD 701401	L SUM	1	1	
70103815	TRAFFIC CONTROL SURVEILLANCE	CAL DA	60	60	
70106800	CHANGEABLE MESSAGE SIGN	CAL MO	12	12	
70300100	SHORT TERM PAVEMENT MARKING	FOOT	10265.4	10265.4	
70300230	TEMPORARY PAVEMENT MARKING - LINE 5"	FOOT	136872	136872	
* 78005120	EPOXY PAVEMENT MARKING - LINE 5"	FOOT	76992	76992	
* 78100100	RAISED REFLECTIVE PAVEMENT MARKER	EACH	430	430	
78300100	PAVEMENT MARKING REMOVAL	SO FT	42772.4	42772.4	

* SPECIALTY ITEM

REV. 2-20-15

FILE NAME :	USER NAME :	DESIGNED :	REVISED :
c:\pwork\work\pedit\sparksgv\d0360559\0872292.rvt-500.dgn	sparksgv	-	-
PLOT SCALE :	CHECKED :	DATE :	REVISED :
100.0000 / in	-	-	-
PLOT DATE :	DATE :	REVISED :	-
Jan-13-2015 01:48:24PM	-	-	-

STATE OF ILLINOIS
DEPARTMENT OF TRANSPORTATION

SUMMARY OF QUANTITIES

F.A.I. RATE:	SECTION	COUNTY	TOTAL SHEETS	SHEET NO.
72	(84-10-2)RS-5	SANGAMON	28	3
SCALE:			SHEET OF SHEETS	STA. TO STA.
ILLINOIS FED. AID PROJECT				

CONTRACT NO. 72G92

90/10 FED/STATE

CONSTR. CODE
6-00745-0000

CODE NO.	ITEM	UNIT	TOTAL QUANTITY	ROADWAY	
				0005	RURAL
78300200	RAISED REFLECTIVE PAVEMENT MARKER REMOVAL	EACH	430	430	
<input type="checkbox"/> X0320157	CLEANING UNDERDRAIN OUTLETS	EACH	132	132	
X0322279	OUTLET MARKER	EACH	132	132	
<input type="checkbox"/> X2503000	MAINTENANCE MOWING	ACRE	84	84	
X4200760	PORTLAND CEMENT CONCRETE OVERLAY, 6"	SQ YD	152080	152080	
X7010410	SPEED DISPLAY TRAILER	CAL MO	16	16	
X7200201	WIDTH RESTRICTION SIGNING	L SUM	1	1	
* X7830072	GROOVING FOR RECESSED PAVEMENT MARKING 6"	FOOT	76992	76992	
∅ Z0076600	TRAINEES	HOOR	2000	2000	
X9900002	GEOTEXTILE FABRIC INTERLAYER	SQ YD	76306.6	76306.6	
∅ Z0076604	TRAINEES TRAINING PROGRAM GRADUATE	HOOR	2000	2000	

Non - PART. (100% STATE)

* SPECIALTY ITEM

∅ 0042

△ REV. 2-20-15

FILE NAME =	USER NAME = sparkgr	DESIGNED -	REVISED -	STATE OF ILLINOIS DEPARTMENT OF TRANSPORTATION	SUMMARY OF QUANTITIES				F.A.I. RTE.	SECTION	COUNTY	TOTAL SHEETS	SHEET NO.
c:\p\work\p\dot\sparkgr\0360559\0672092-plt-500.dgn		DRAWN -	REVISED -		72	184-10-21R5-5	SANGAMON	28	4				
PLOT SCALE = 100.0000 / 1"		CHECKED -	REVISED -		SCALE: SHEET OF SHEETS STA. TO STA.				ILLINOIS FED. AID PROJECT				
Default		DATE -	REVISED -						CONTRACT NO. 72092				

LOCATION (EB, WB, STATION)	LENGTH (FOOT)	HMA SURFACE REMOVAL, 3.25" (SQ YD)	HMA SURFACE REMOVAL, 7.25" (SQ YD)	HMA BASE COURSE, 4" (SQ YD)	HMA BASE COURSE, 11" (SQ YD)	GEOTEXTILE FABRIC INTERLAYER (SQ YD)	HMA LEVEL BINDER, 1.25" (TON)	P. C. C. OVERLAY, 6" (SQ YD)	PRIME COAT (POUND)
WB, 0+00 TO 171+00	17109	57030	19010.0	19010.0	11406.0	76040.0		76040.0	
EB, 0+00 TO 171+00	17109	57030	19010.0	19010.0	11406.0		5322.8	76040.0	34218
EB, 0+00 TO 0+30	30							133.3	
EB, 170+79 TO 171+09	30							133.3	
TOTALS =		114060.0	38020.0	38020.0	22812.0	76306.6	5322.8	152080.0	34218.00

LOCATION	WORK ZONE PAVEMENT MARKING			
	PAVEMENT MARKING REMOVAL MEDIAN SHLD STAGE 1 (SQ FT)	TEMPORARY PAVEMENT MARKING -LINE 5" STAGE 1 (FOOT)	TEMPORARY PAVEMENT MARKING -LINE 5" STAGE 2 (FOOT)	PAVEMENT MARKING REMOVAL STAGE 2 (SQ FT)
WB, 0+00 TO 171+09	7128.7	34218	34218	14257.5
EB, 0+00 TO 171+09	7128.7	34218	34218	14257.5
TOTALS	14257.4	68436	68436	28515

Pavement Marking Schedule						
Location	Length	EPOXY		RRPM	Remove RRPM	Grooving for recessed markings
		Edge Line 5"	Skip Dash 5"			
Sta 0+00 to 171+09 WB	17109	34218	4278	215	215	38496
Sta 0+00 to 171+09 EB	17109	34218	4278	215	215	38496
Totals		68436	8556	430	430	76992

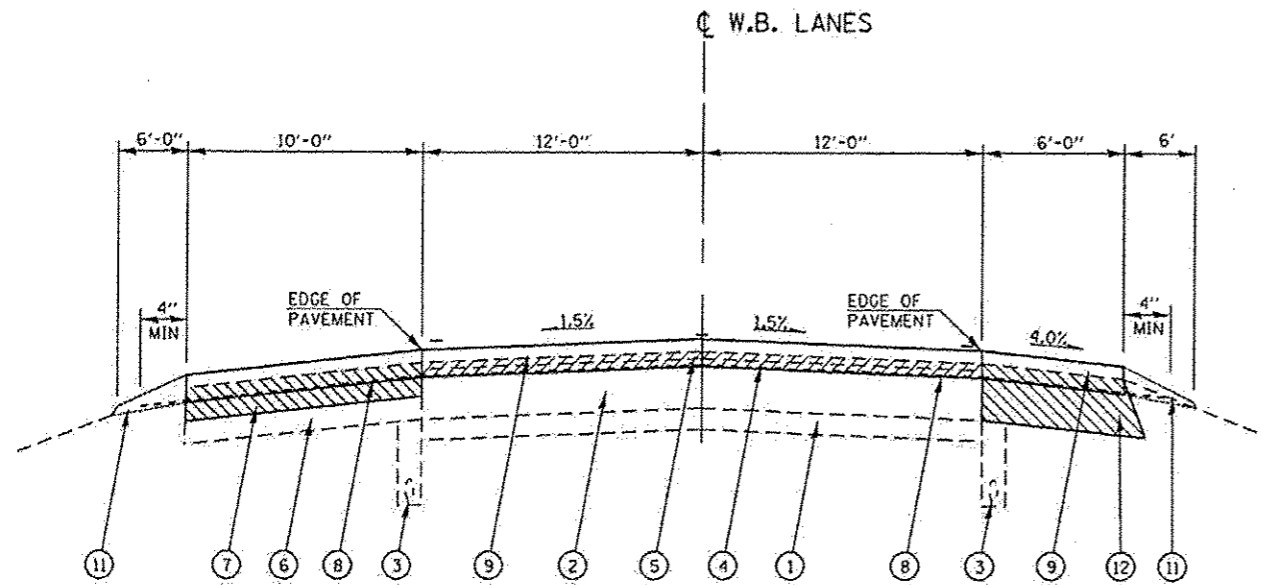
ESTIMATED PATCHING QUANTITY						
	CLASS A, 8 INCH			SAW CUTS FT	REINFORCEMENT SY	TIE BARS 5/8" EACH
	TY II SY	TY III SY	TY IV SY			
TOTALS	22.2	23.3	41.7	378.5	87.2	92

PAVEMENT PATCHING SCHEDULE					CLASS A, 8 INCH			SAW CUTS (FT)	PATCHING REINF. (S. Y.)	TIE BARS 5/8" (EA.)
STATION	LANE	LENGTH (FT)	WIDTH (FT)	AREA (S. Y.)	TY II (S. Y.)	TY III (S. Y.)	TY IV (S. Y.)			
9+20	WBDL	25	6	16.7	--	16.7	--	74.0	16.7	23.0
11+60	WBDL	15	6	10.0	10.0	--	--	54.0	10.0	--
14+00	WBDL	120	6	80.0	--	--	80.0	264.0	80.0	118.0
21+25	WBDL	6	12	8.0	8.0	--	--	60.0	8.0	--
33+20	WBDL	20	6	13.3	13.3	--	--	64.0	13.3	18.0
46+40	WBDL	20	6	13.3	13.3	--	--	64.0	13.3	18.0
143+30	WBDL	15	12	20.0	--	20.0	--	78.0	20.0	--
146+90	WBDL	20	6	13.3	13.3	--	--	64.0	13.3	18.0
148+90	WBDL	30	6	20.0	--	20.0	--	84.0	20.0	28.0
157+25	WBDL	6	12	8.0	8.0	--	--	60.0	8.0	--
165+00	WBDL	25	6	16.7	--	16.7	--	74.0	16.7	23.0
167+75	WBDL	10	6	6.7	6.7	--	--	44.0	6.7	--
168+00	WBDL	15	12	20.0	--	20.0	--	78.0	20.0	--
156+30	EBDL	40	6	26.7	--	--	26.7	104.0	26.7	38.0
155+90	EBDL	6	12	8.0	8.0	--	--	60.0	8.0	--
155+84	EBDL	40	6	26.7	--	--	26.7	104.0	26.7	38.0
153+50	EBDL	6	12	8.0	8.0	--	--	60.0	8.0	--
135+40	EBDL	50	6	33.3	--	--	33.3	124.0	33.3	48.0
TOTALS:					88.7	93.3	166.7	1514.0	348.7	370.0

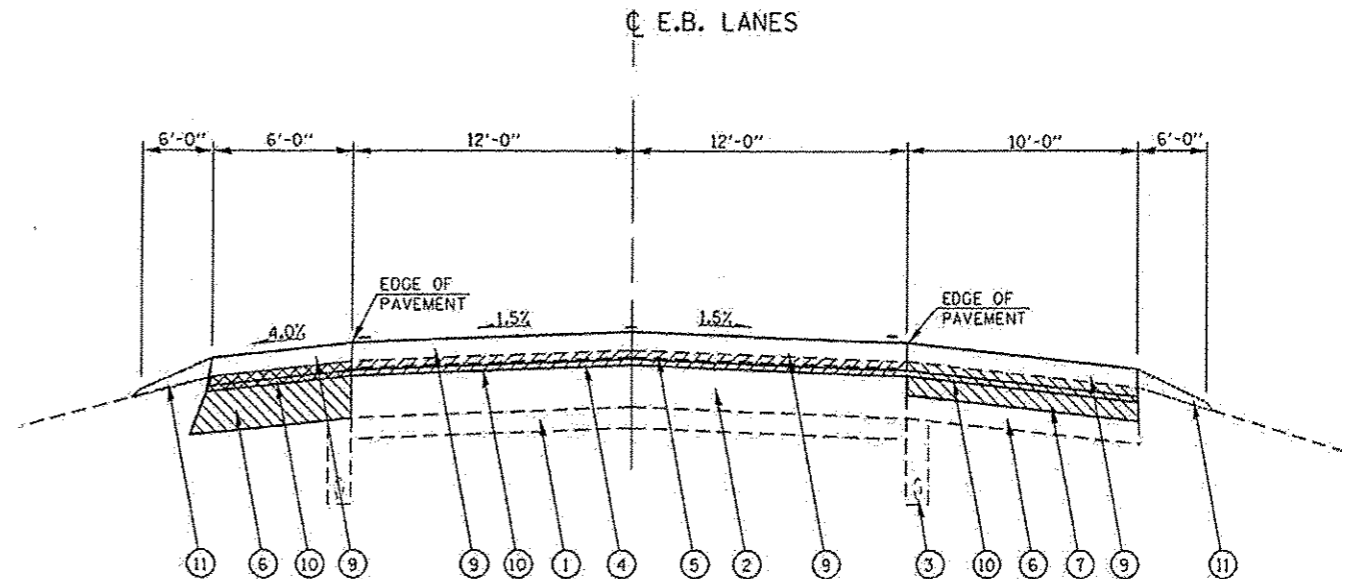
Patching Total: 348.7

REVISOR SHEET 2-20-15

FILE NAME: c:\p\work\pav\mcdonaldr\10236059910272092-sht-schedule.dgn	USER NAME: mcdonaldr	DESIGNED: -	REVISED: -	STATE OF ILLINOIS DEPARTMENT OF TRANSPORTATION	SCHEDULES OF QUANTITIES			F.A.I. RITE: 72	SECTION: 184-10-21RS-5	COUNTY: SANGAMON	TOTAL SHEETS: 28	SHEET NO.: 5
PLOT SCALE: 1/8"=1'-0"	PLOT DATE: Feb-09-2015 11:35:24AM	CHECKED: -	REVISED: -		SCALE: _____	SHEET 1 OF 1 SHEETS	STA. _____ TO STA. _____	ILLINOIS FED. AID PROJECT CONTRACT NO. 12G92				
DATE: -	DATE: -	DATE: -	DATE: -									
DATE: -	DATE: -	DATE: -	DATE: -									



WESTBOUND LANES



EASTBOUND LANES

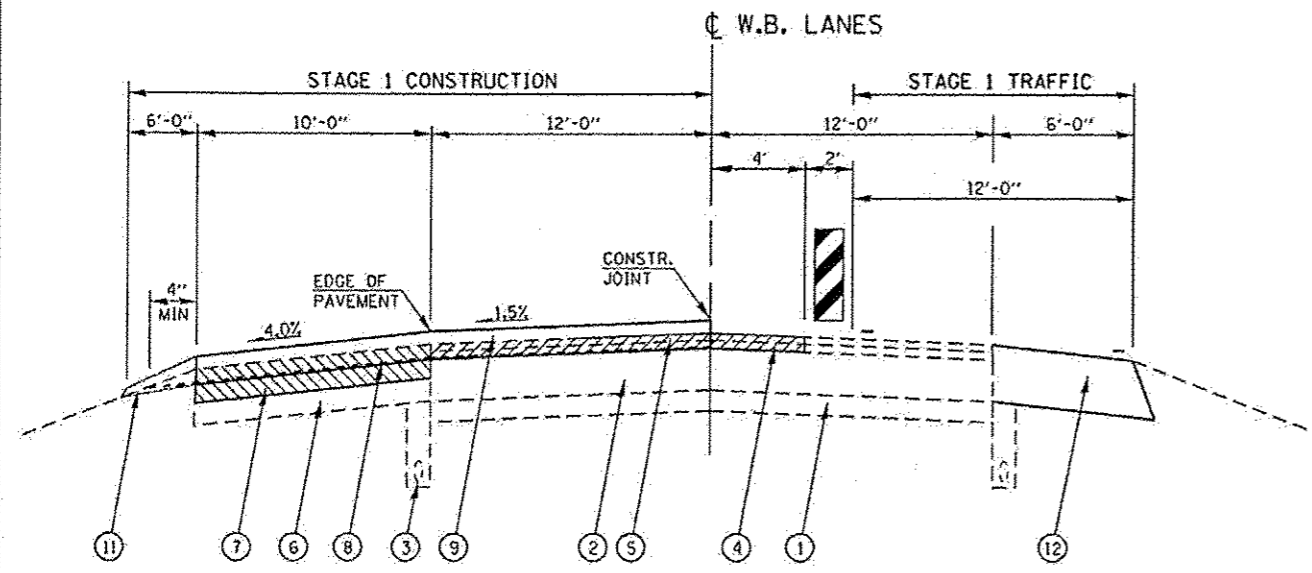
F.A.I. RTE. 72
STA. 0 + 00.00 - STA. 171 + 09.00

LEGEND

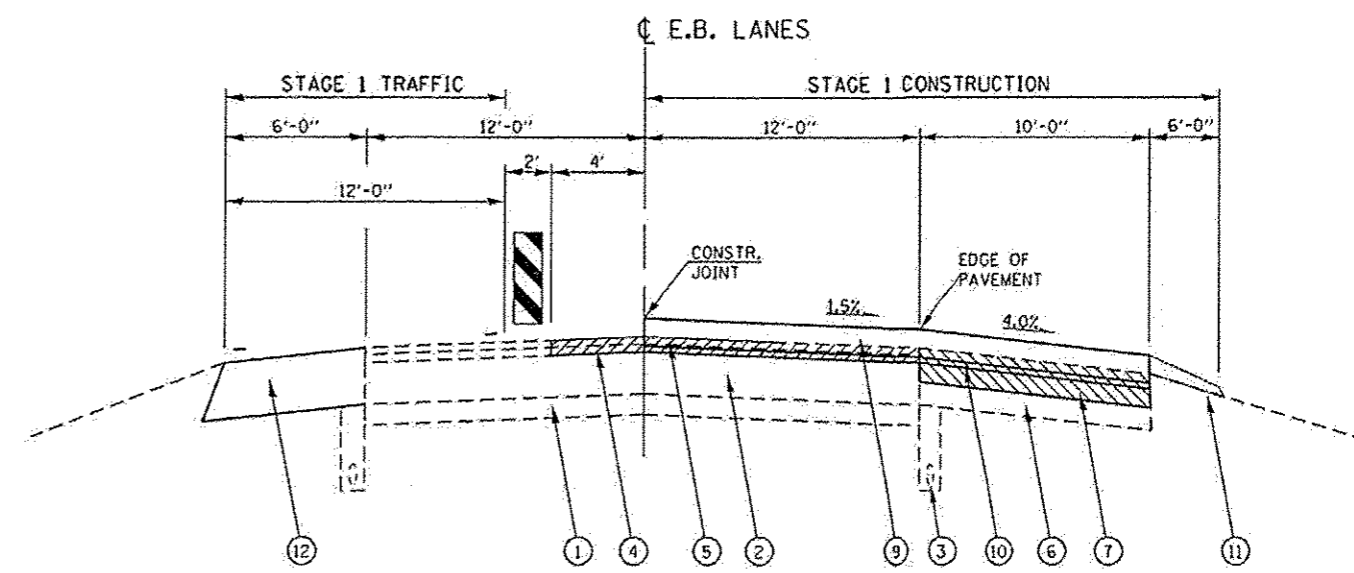
- ① EXIST. STABILIZED SUB-BASE, 4"
 - ② EXIST. CONTINUOUS REINFORCED P.C.C. PAVEMENT, 8"
 - ③ EXIST. PIPE UNDERDRAINS
 - ④ EXIST. HMA BINDER COURSE, MIX B, TY 1, 1.75"
 - ⑤ EXIST. HMA SURFACE COURSE, MIX D, CL. 1, TY 1, 1.5"
 - ⑥ EXIST. HMA SHOULDER (WITH RUMBLE STRIPS), 11.25"
 - ⑦ PROPOSED HMA BASE COURSE, 4"
 - ⑧ PROPOSED GEOFABRIC INTERLAYER
 - ⑨ PROPOSED CONCRETE OVERLAY, 6"
 - ⑩ PROPOSED LEVELING BINDER, 1.25"
 - ⑪ PROPOSED WEDGE AGGREGATE SHOULDER, TYPE B
 - ⑫ PROPOSED HMA BASE COURSE 11"
- PROPOSED HMA SURFACE REMOVAL, 3.25"
 (REMOVAL TO BARE P.C.C.)
- PROPOSED HMA SURFACE REMOVAL, 7.25"
 (REMOVAL DEPTH FOR HMA SHOULDER)

△ REVISED SHEET 2-20-15

FILE NAME -	USER NAME - mcdonaldra	DESIGNED - VTY	REVISED -	STATE OF ILLINOIS DEPARTMENT OF TRANSPORTATION	TYPICAL SECTIONS		F.A.I. RTE.	SECTION	COUNTY	TOTAL SHEETS	SHEET NO.
c:\pwork\spicota\mcdonaldra\036025910	72072-shl-typicals-modif1.ssd.dgn	DRAWN - RTS	REVISED -		T2	(84-10-2)RS-5	SANGAMON	28	6		
Default	PLOT SCALE - 20.0/30.0 in.	CHECKED - VTY	REVISED -		SCALE: SHEET 2 OF 2 SHEETS		STA.	TO STA.	[ILLINOIS] FED. AID PROJECT		
	PLOT DATE - Feb-09-2015 11:48:58AM	DATE - 10-15-2014	REVISED -		CONTRACT NO. 72092						



STAGE 1 TRAFFIC /CONSTRUCTION
WESTBOUND LANES



STAGE 1 TRAFFIC /CONSTRUCTION
EASTBOUND LANES

F.A.I. RTE. 72
STA. 0 + 00.00 - STA. 171 + 09.00

SUGGESTED SEQUENCE OF CONSTRUCTION
STAGE 1, WESTBOUND TRAFFIC

1. MILL MAINLINE PAVEMENT 3.25" (TO BARE P.C.C.)
2. MILL OUTSIDE HMA SHOULDER 7.25"
3. RESURFACE OUTSIDE HMA SHOULDER WITH HMA BINDER COURSE, 4".
4. PLACE GEOTEXTILE INTERLAYER 4" FROM OUTSIDE EDGE OF HMA SHOULDER TO EDGE OF MILLED MAINLINE SURFACE.
5. PLACE CONCRETE OVERLAY, 6" ON HMA SHOULDER AND MAINLINE PAVEMENT.
6. PLACE AGGREGATE SHOULDERS.

LEGEND

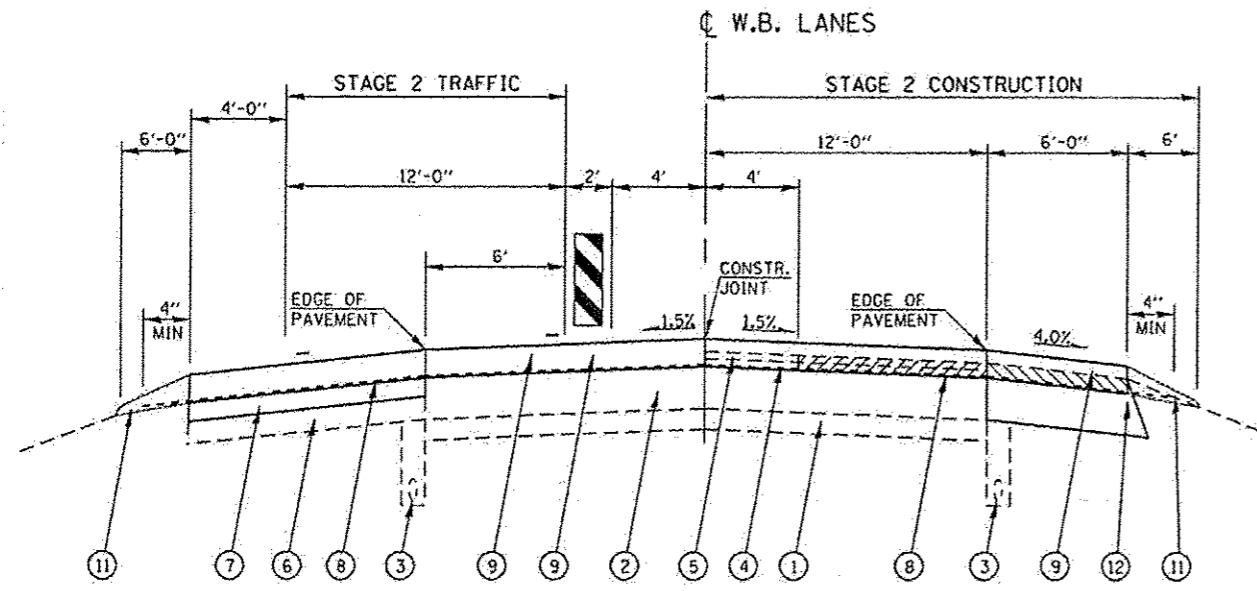
- ① EXIST. STABILIZED SUB-BASE, 4"
 - ② EXIST. CONTINUOUS REINFORCED P.C.C. PAVEMENT, 8"
 - ③ EXIST. PIPE UNDERDRAINS
 - ④ EXIST. HMA BINDER COURSE, MIX B, TY 1, 1.75"
 - ⑤ EXIST. HMA SURFACE COURSE, MIX D, CL. 1, TY 1, 1.5"
 - ⑥ EXIST. HMA SHOULDER (WITH RUMBLE STRIPS), 11.25"
 - ⑦ PROPOSED HMA BASE COURSE, 4"
 - ⑧ PROPOSED GEOTEXTILE INTERLAYER
 - ⑨ PROPOSED CONCRETE OVERLAY, 6"
 - ⑩ PROPOSED LEVELING BINDER, 1.25"
 - ⑪ PROPOSED WEDGE AGGREGATE SHOULDER, TYPE B
 - ⑫ PROPOSED HMA BASE COURSE 11"
- PROPOSED HMA SURFACE REMOVAL, 3.25" (REMOVAL TO BARE P.C.C.)
 PROPOSED HMA SURFACE REMOVAL, 7.25" (REMOVAL DEPTH FOR HMA SHOULDER)

SUGGESTED SEQUENCE OF CONSTRUCTION
STAGE 1, EASTBOUND TRAFFIC

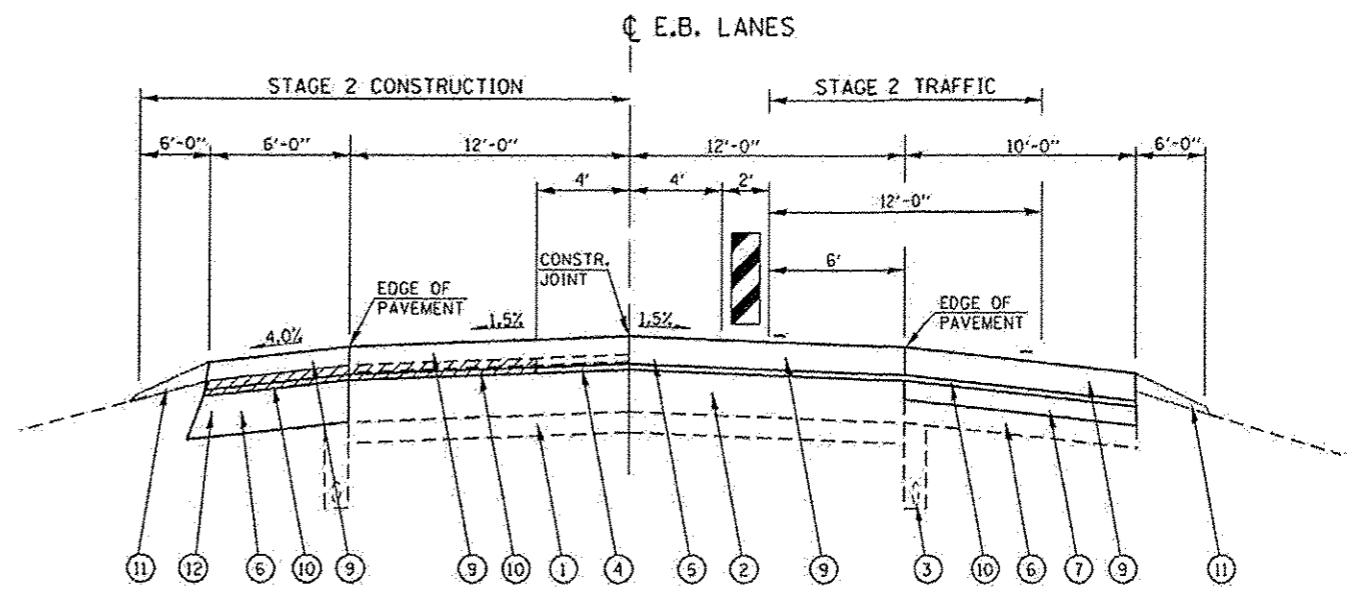
1. MILL MAINLINE PAVEMENT 3.25" (TO BARE P.C.C.)
2. MILL OUTSIDE HMA SHOULDER 7.25"
3. RESURFACE OUTSIDE HMA SHOULDER WITH HMA BINDER COURSE, 4".
4. PLACE HMA LEVEL BINDER, 1.25" FROM OUTSIDE EDGE OF HMA SHOULDER TO EDGE OF MILLED SURFACE.
5. PLACE CONCRETE OVERLAY, 6" ON HMA SHOULDER AND MAINLINE PAVEMENT.
6. PLACE AGGREGATE SHOULDERS.

REVIS **REVIS** SHEET 2-20-15

FILE NAME: c:\p\work\pav\pav\mcdonald\pav\03605591072012-shr-tp\pav\mcdonald\modified.dgn PLOT SCALE: 1/8" = 1'-0" PLOT DATE: Feb-09-2015 11:26:26AM	USER NAME: mcdonald DESIGNED: VTY DRAWN: RTS CHECKED: VTY DATE: 10-15-2014	REVISIONS: REVISION NO. DATE BY DESCRIPTION 1 2 3 4	STATE OF ILLINOIS DEPARTMENT OF TRANSPORTATION	TYPICAL SECTIONS STAGE 1 CONSTRUCTION SCALE: SHEET 1 OF 2 SHEETS STA. TO STA.	F.A.I. RTE. 72 SECTION (84-10-2)RS-5 COUNTY SANGAMON TOTAL SHEETS 28 SHEET NO. 8 CONTRACT NO. 72G92 ILLINOIS FED. AID PROJECT
--	--	--	---	---	---



STAGE 2 TRAFFIC /CONSTRUCTION
WESTBOUND LANES



STAGE 2 TRAFFIC /CONSTRUCTION
EASTBOUND LANES

F.A.I. RTE. 72
STA. 0 + 00.00 - STA. 171 + 09.00

SUGGESTED SEQUENCE OF CONSTRUCTION
STAGE 2, WESTBOUND TRAFFIC

1. MILL MAINLINE PAVEMENT 3.25" (TO BARE P.C.C.)
2. MILL INSIDE HMA SHOULDER 3.25"
3. PLACE GEOFABRIC INTERLAYER 4" FROM OUTSIDE EDGE OF HMA SHOULDER TO EDGE OF MILLED MAINLINE SURFACE.
4. PLACE CONCRETE OVERLAY, 6" ON HMA SHOULDER AND MAINLINE PAVEMENT.
5. PLACE AGGREGATE SHOULDERS.

LEGEND

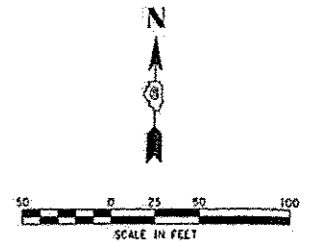
- ① EXIST. STABILIZED SUB-BASE, 4"
 - ② EXIST. CONTINUOUS REINFORCED P.C.C. PAVEMENT, 8"
 - ③ EXIST. PIPE UNDERDRAINS
 - ④ EXIST. HMA BINDER COURSE, MIX B, TY 1, 1.75"
 - ⑤ EXIST. HMA SURFACE COURSE, MIX D, CL. 1, TY 1, 1.5"
 - ⑥ EXIST. HMA SHOULDER (WITH RUMBLE STRIPS), 11.25"
 - ⑦ PROPOSED HMA BASE COURSE, 4"
 - ⑧ PROPOSED GEOFABRIC INTERLAYER
 - ⑨ PROPOSED CONCRETE OVERLAY, 6"
 - ⑩ PROPOSED LEVELING BINDER, 1.25"
 - ⑪ PROPOSED WEDGE AGGREGATE SHOULDER, TYPE B
 - ⑫ PROPOSED HMA BASE COURSE 11"
- PROPOSED HMA SURFACE REMOVAL, 3.25" (REMOVAL TO BARE P.C.C.)
 PROPOSED HMA SURFACE REMOVAL, 7.25" (REMOVAL DEPTH FOR HMA SHOULDER)

SUGGESTED SEQUENCE OF CONSTRUCTION
STAGE 2, EASTBOUND TRAFFIC

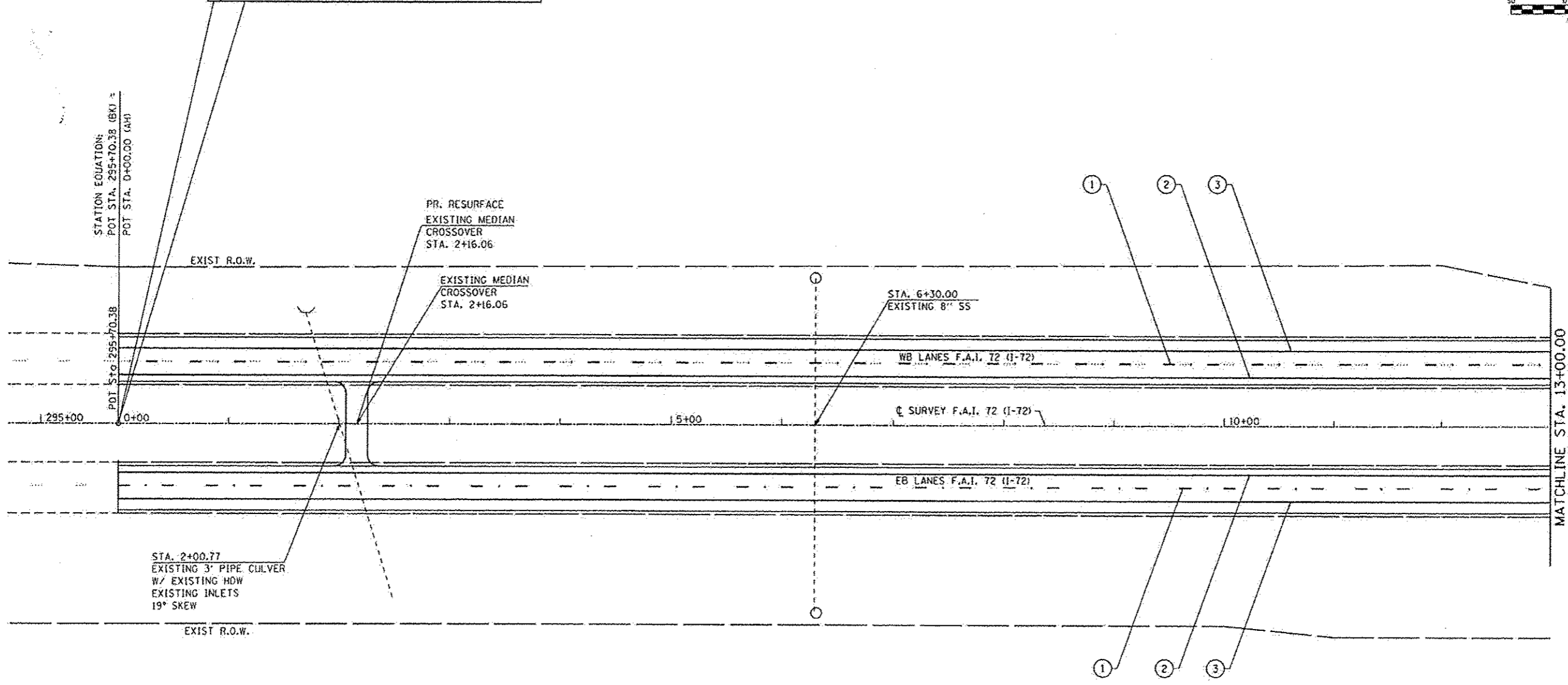
1. MILL MAINLINE PAVEMENT 3.25" (TO BARE P.C.C.)
2. MILL INSIDE HMA SHOULDER 3.25"
3. PLACE HMA LEVEL BINDER, 1.25" FROM OUTSIDE EDGE OF HMA SHOULDER TO EDGE OF MILLED SURFACE.
4. PLACE CONCRETE OVERLAY, 6" ON HMA SHOULDER AND MAINLINE PAVEMENT.
5. PLACE AGGREGATE SHOULDERS.

REVIS SHEET 2-20-15

FILE NAME	USER NAME	DESIGNED	REVISED	STATE OF ILLINOIS DEPARTMENT OF TRANSPORTATION	TYPICAL SECTIONS STAGE 2 CONSTRUCTION		F.A.I. RTE.	SECTION	COUNTY	TOTAL SHEETS	SHEET NO.
c:\p\work\p\id\mcdonald\1\036055\1\0372092\shc\typical\modif\ed.dgn	mcdonald	VTY			72	184-10-2RS-5	SANGAMON	28	9		
PLD SCALE	PLD DATE	CHECKED	REVISED		SCALE:	SHEET 2 OF 2 SHEETS	STA.	TO STA.	ILLINOIS REG. #10 PROJECT		
Default	Feb-09-2015 11:26:56AM	VTY							CONTRACT NO. 72C92		



STA. 0+00.00 BEGIN
SECTION (84-10-IRS-3, 84-102RS-4) IMPROVEMENTS

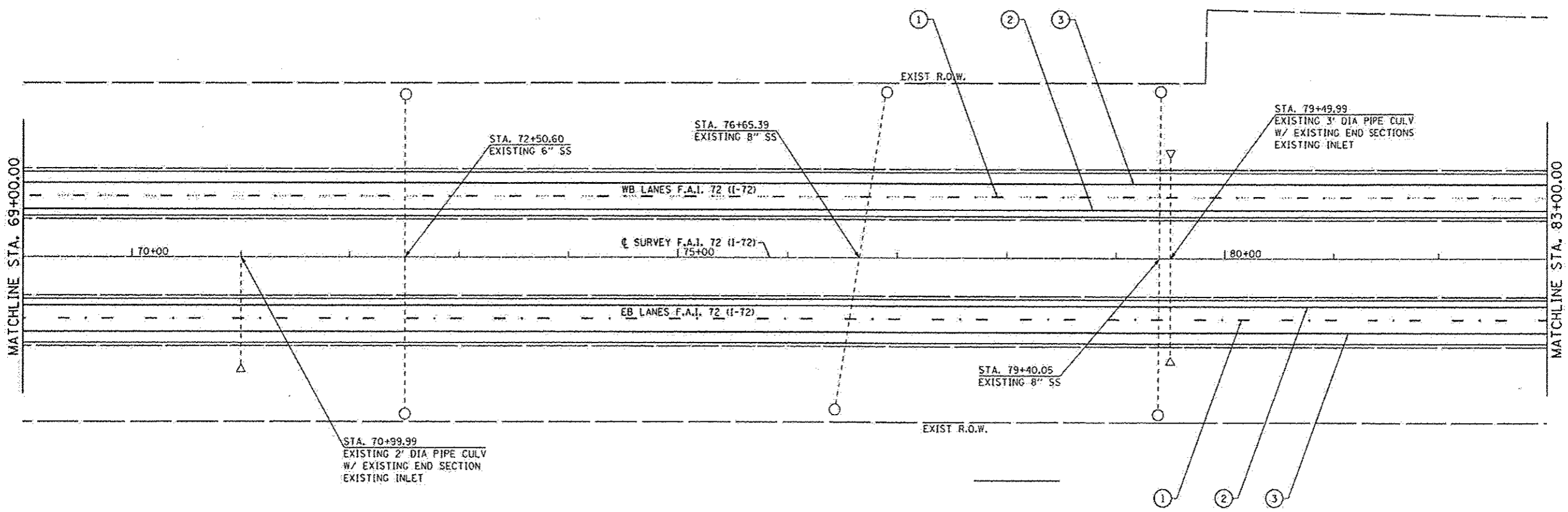
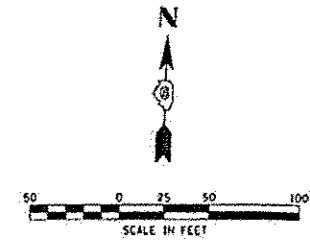


PAVEMENT MARKING LEGEND

- ① EPOXY PAVEMENT MARKING - LINE, 5" (30' SKIP, 10' DASH, WHITE)
- ② EPOXY PAVEMENT MARKING - LINE, 5" (SOLID YELLOW)
- ③ EPOXY PAVEMENT MARKING - LINE, 5" (SOLID WHITE)

REVIS SHEET 2-20-15

FILE NAME c:\work\p\p\dot\mcdonalds\1936889\0	USER NAME mcdonalds	DESIGNED -	REVISED -	STATE OF ILLINOIS DEPARTMENT OF TRANSPORTATION	PLAN SHEET - F.A.I. 72 (I-72)		F.A.I. RTE. 72	SECTION (84-10-2RS-5)	COUNTY SANGAMON	TOTAL SHEETS 20	SHEET NO. 10	
PLDT SCALE 1/8" = 100'	PLDT DATE Feb-09-2015 11:21:37AM	CHECKED -	REVISED -				SCALE:	SHEET 1 OF 13 SHEETS	STA. TO STA.	ILLINOIS FED. AID PROJECT		
Default		DATE -	REVISED -									
CONTRACT NO. 72092												

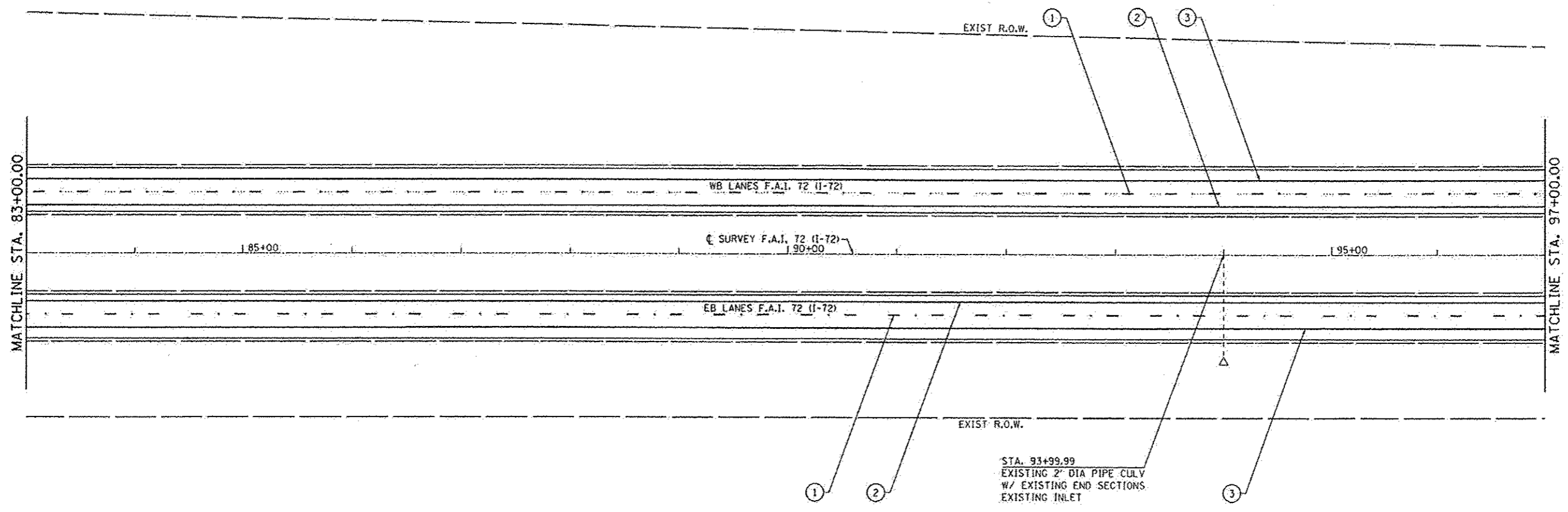
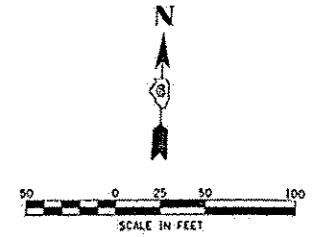


PAVEMENT MARKING LEGEND

- ① EPOXY PAVEMENT MARKING - LINE, 5" (30' SKIP, 10' DASH, WHITE)
- ② EPOXY PAVEMENT MARKING - LINE, 5" (SOLID YELLOW)
- ③ EPOXY PAVEMENT MARKING - LINE, 5" (SOLID WHITE)

▲ REVISED SHEET 2-20-15

FILE NAME * c:\pwworkspace\dot\mcdonalds\ad03605594\72692-ant-plan-50-021.dgn Default	USER NAME * mcdonalds DESIGNED -	REVISIONS REVISION NO. DATE BY 1 2/20/15 [unintelligible] [unintelligible]	STATE OF ILLINOIS DEPARTMENT OF TRANSPORTATION	PLAN SHEET - F.A.I. 72 (I-72)		F.A.I. RTE. 72	SECTION 104-10-21RS-5	COUNTY SANGAMON	TOTAL SHEETS 28	SHEET NO. 15
	PLOT SCALE * 100.0000 / in. CHECKED -	REVISION NO. DATE BY 2 2/20/15 [unintelligible] [unintelligible]		SCALE: SHEET 6 OF 13 SHEETS STA. TO STA.		CONTRACT NO. 72G92				
	PLOT DATE * Feb-09-2015 11:20:54AM DATE -	REVISION NO. DATE BY 3 2/20/15 [unintelligible] [unintelligible]		(ILLINOIS) FED. AID PROJECT						



PAVEMENT MARKING LEGEND

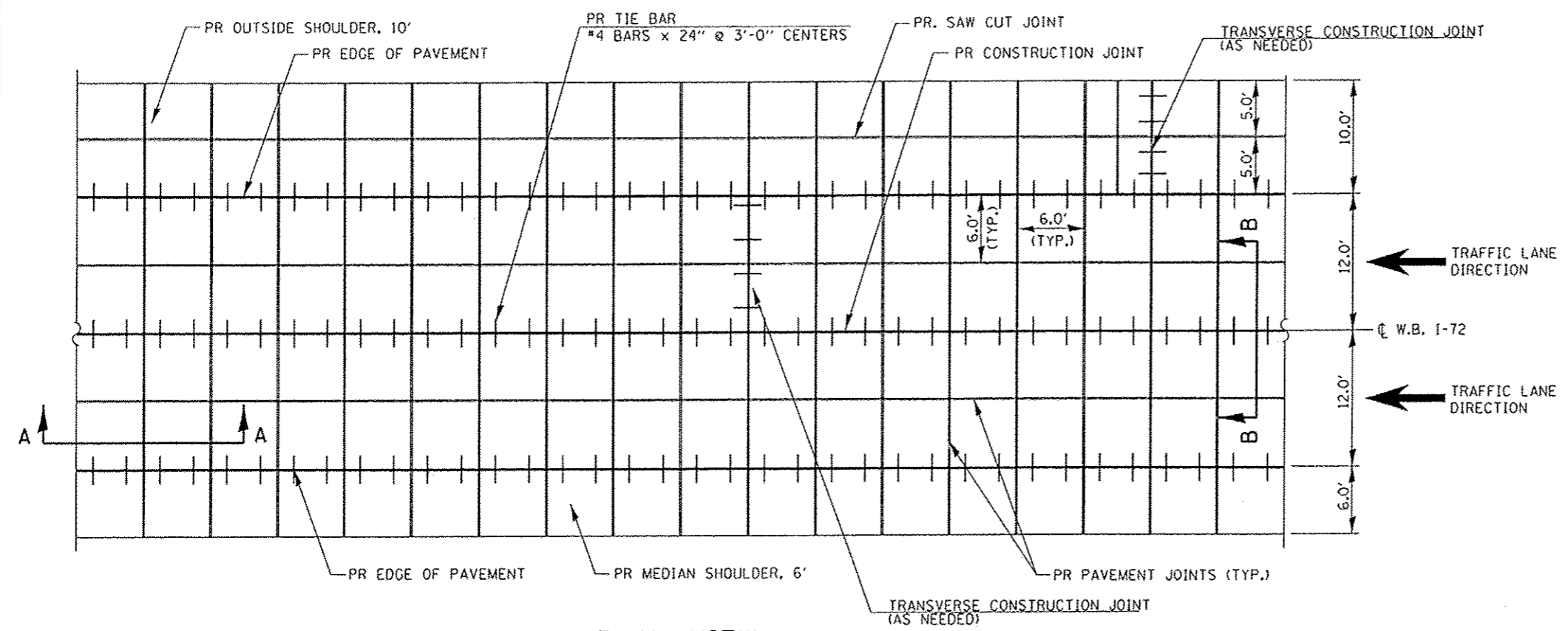
- ① EPOXY PAVEMENT MARKING - LINE, 5" (30' SKIP, 10' DASH, WHITE)
- ② EPOXY PAVEMENT MARKING - LINE, 5" (SOLID YELLOW)
- ③ EPOXY PAVEMENT MARKING - LINE, 5" (SOLID WHITE)

△ REVISED SHEET 2-20-15

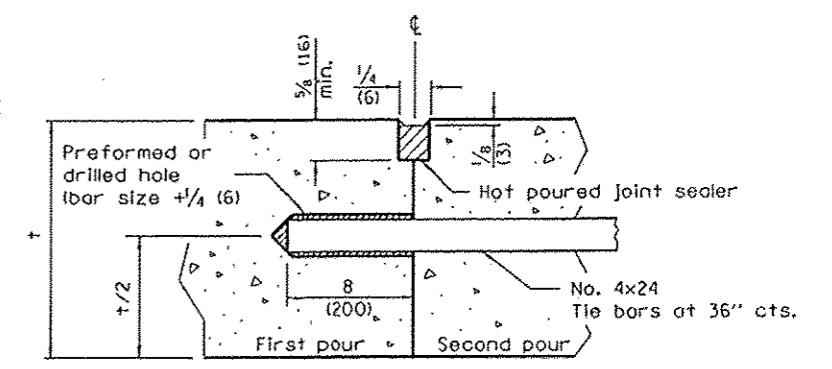
FILE NAME	USER NAME	DESIGNED	REVISED	STATE OF ILLINOIS DEPARTMENT OF TRANSPORTATION	PLAN SHEET - F.A.I. 72 (I-72)		F.A.I. RTE.	SECTION	COUNTY	TOTAL SHEETS	SHEET NO.
72692-shl-pfan-58-021.dgn	ecdonaldra	DRAWN	REVISED				72	(84-10-2)RS-5	SANGAMON	28	16
PLOT SCALE = 1/8" = 1'		CHECKED	REVISED		SCALE: SHEET 7 OF 13 SHEETS STA. TO STA.		CONTRACT NO. 72692				
PLOT DATE = Feb-09-2015 18:38:32AM		DATE	REVISED		ILLINOIS FED. AID PROJECT						

NOTE:

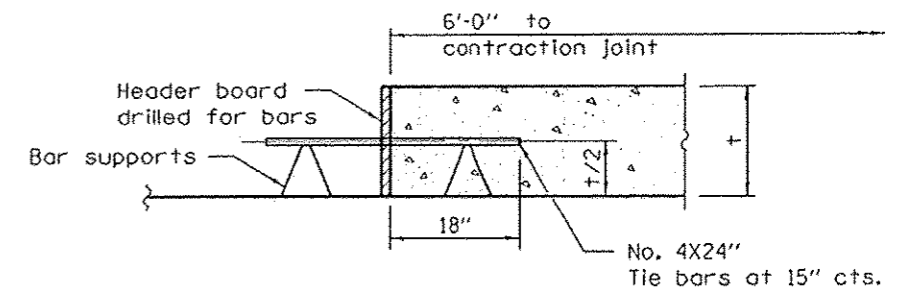
1. ALL PAVEMENT SAWCUTS, LABOR, EQUIPMENT, AND MATERIALS NECESSARY FOR THE CONSTRUCTION OF "PORTLAND CEMENT CONCRETE OVERLAY, 6" SHALL BE INCLUDED IN THE CONTRACT UNIT PRICE PER SQUARE YARD FOR SAID PAY ITEM HEREIN.
2. TIE BARS ARE REQUIRED AT CONSTRUCTION JOINTS.
3. TIE BARS AT SHOULDERS ARE NOT REQUIRED IF PAVEMENT IS POURED MONOLITHICALLY.
4. PAVING ACTIVITIES EACH DAY SHALL NOT TERMINATE MID-PANEL, AND SHALL OCCUR WHERE THE 6' TRANSVERSE CONSTRUCTION JOINTS WILL BE NEEDED AT THE END OF EACH DAYS POUR.



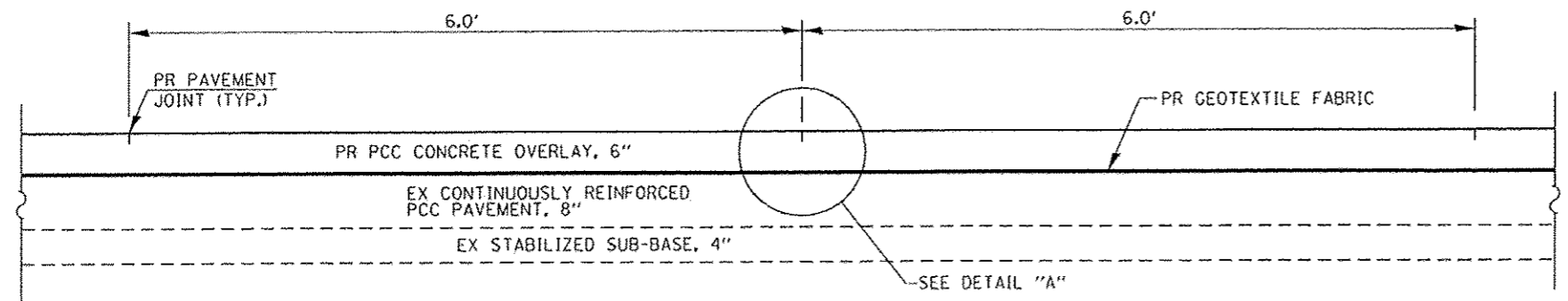
PLAN VIEW
WESTBOUND I-72
STA. 0+00.00 TO STA. 171+09.00



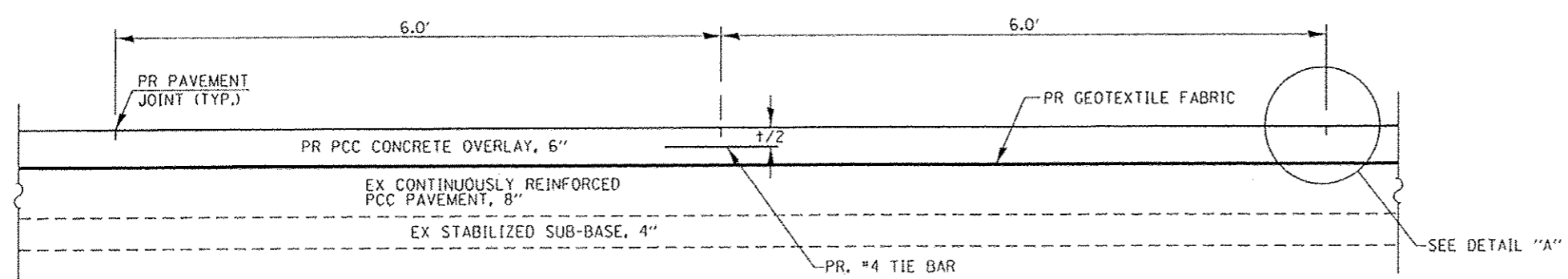
LONGITUDINAL CONSTRUCTION JOINT
 (TIE BAR GROUTED IN PLACE)



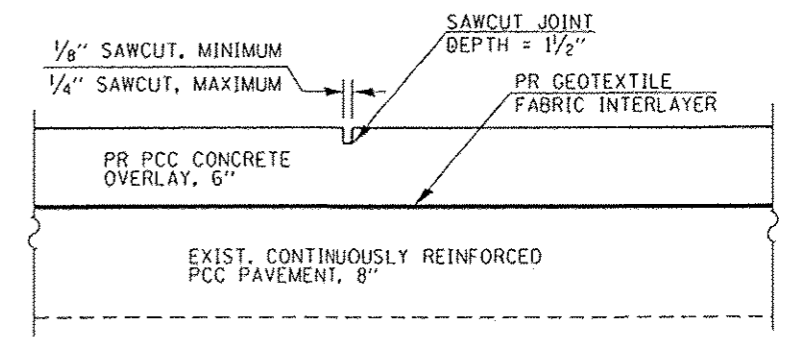
TRANSVERSE CONSTRUCTION JOINT



SECTION A-A



SECTION B-B



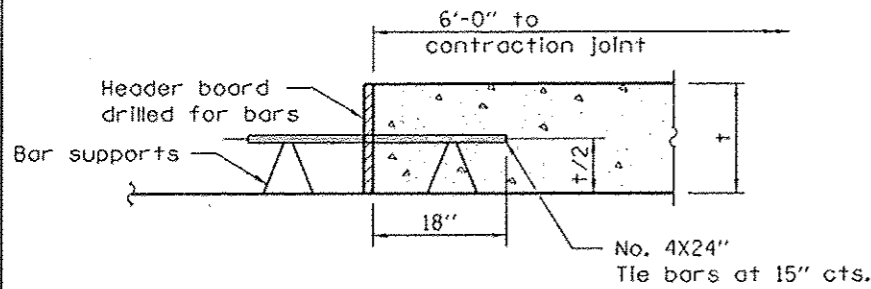
DETAIL "A"

△ REVISED SHEET 2-20-15

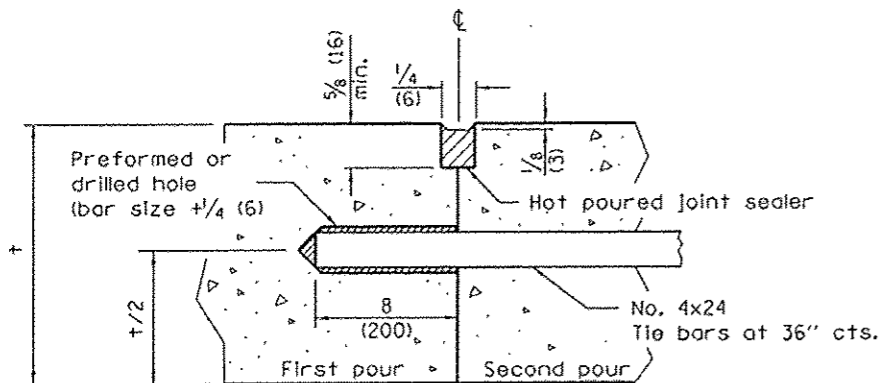
FILE NAME :	USER NAME : mcdonaldr	DESIGNED - VTY	REVISED -	STATE OF ILLINOIS DEPARTMENT OF TRANSPORTATION	PAVEMENT CONSTRUCTION DETAILS (WESTBOUND LANES)		F.A.I. R.E.C.	SECTION	COUNTY	TOTAL SHEETS	SHEET NO.	
Default	72092-shr-detailed.dgn	DRAWN - RTS	REVISED -				72	(84-10-2) RS-5	SANGAMON	28	24	
	PLOT SCALE : 1/8" = 1' / in.	CHECKED - VTY	REVISED -				SCALE: SHEET OF SHEETS STA. TO STA.		CONTRACT NO. 72092		ILLINOIS FED. AID PROJECT	
	PLOT DATE : Feb-18-2015 10h2150M	DATE - 10-17-14	REVISED -									

NOTE:

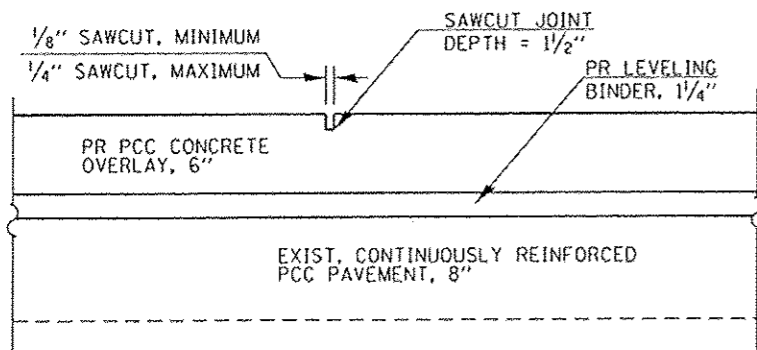
1. ALL PAVEMENT SAWCUTS, LABOR, EQUIPMENT, AND MATERIALS NECESSARY FOR THE CONSTRUCTION OF PORTLAND CEMENT CONCRETE OVERLAY, 6" SHALL BE INCLUDED IN THE CONTRACT UNIT PRICE PER SQUARE YARD FOR SAID PAY ITEM HEREIN.
2. TIE BARS ARE REQUIRED AT CONSTRUCTION JOINTS.
3. TIE BARS AT SHOULDERS ARE NOT REQUIRED IF PAVEMENT IS POURED MONOLITHICALLY.
4. PAVING ACTIVITIES EACH DAY SHALL NOT TERMINATE MID-PANEL, AND SHALL OCCUR WHERE THE 6' TRANSVERSE CONSTRUCTION JOINTS WILL BE NEEDED AT THE END OF EACH DAYS POUR.



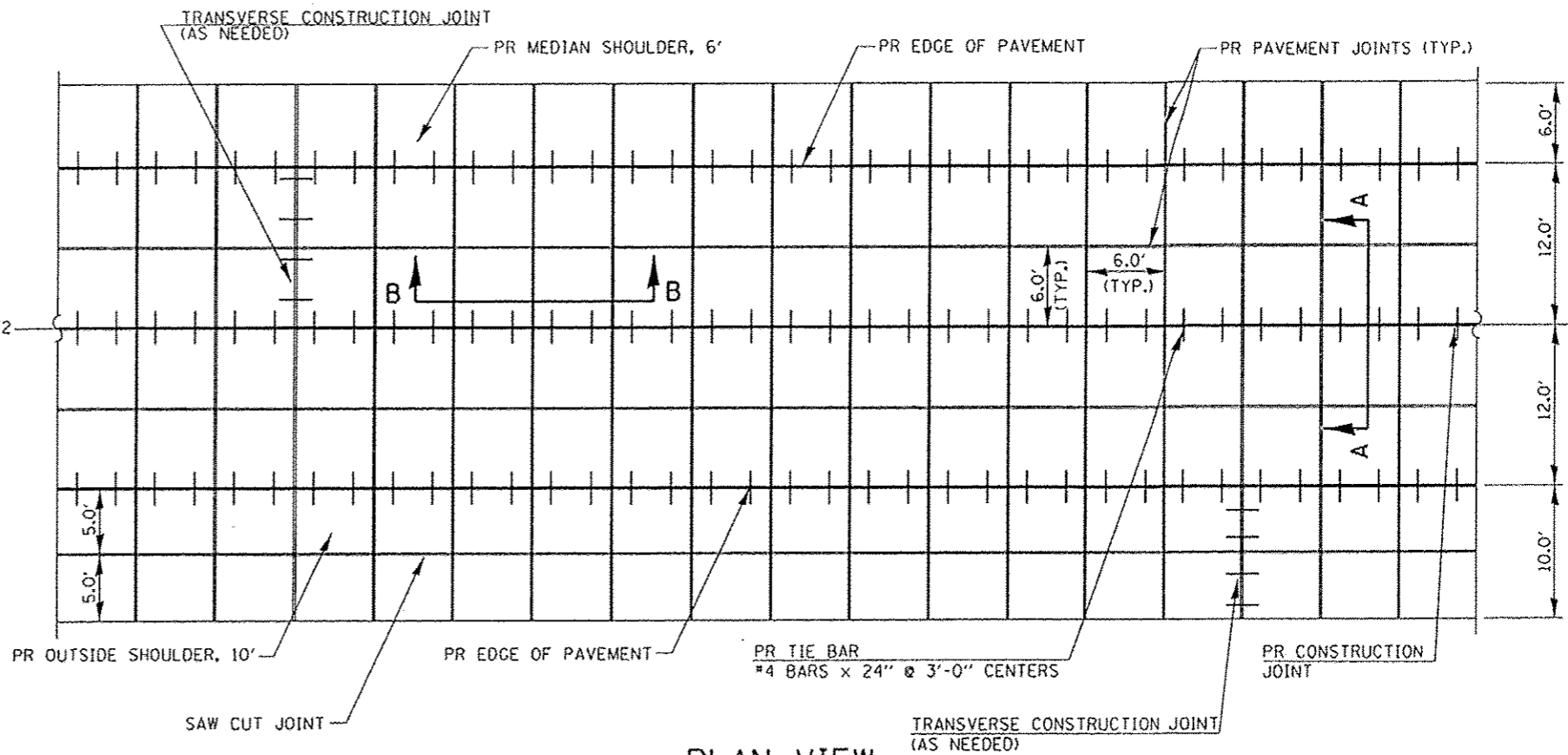
TRANSVERSE CONSTRUCTION JOINT



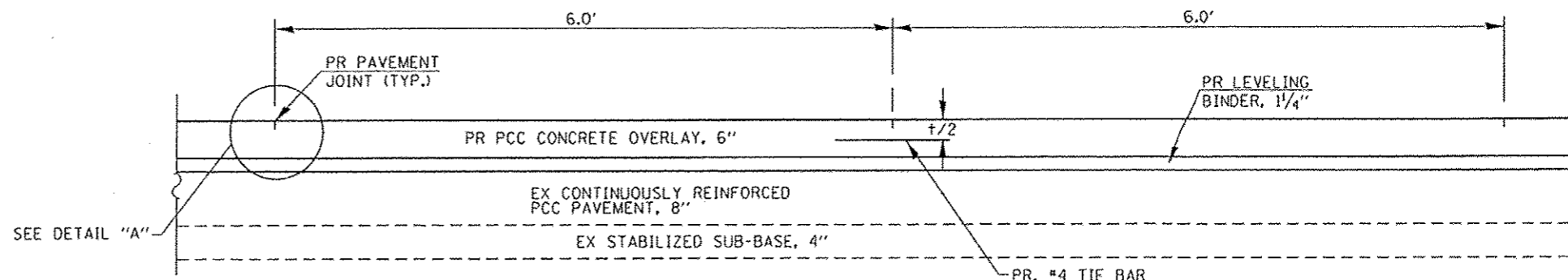
LONGITUDINAL CONSTRUCTION JOINT
(TIE BAR GROUTED IN PLACE)



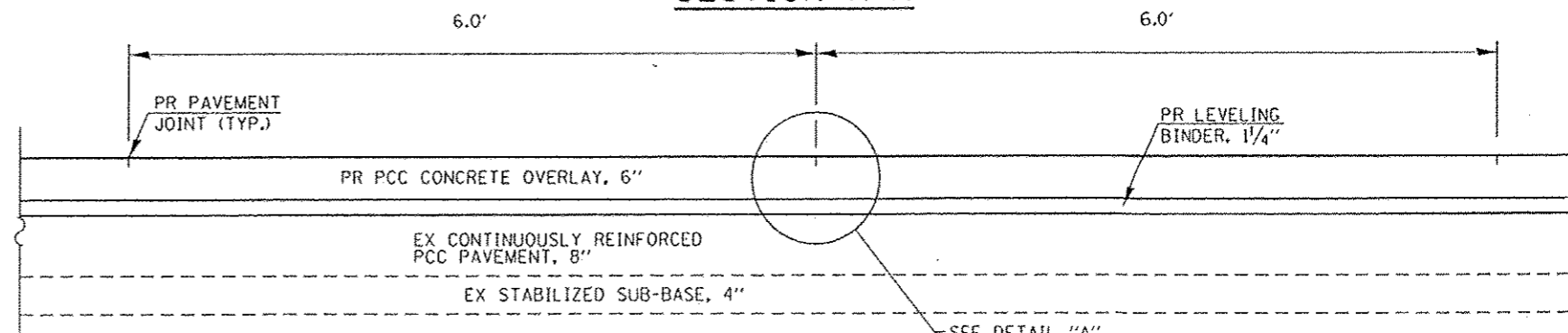
DETAIL "A"



PLAN VIEW
EASTBOUND I-72
STA. 0+00.00 TO STA. 171+09.00



SECTION A-A



SECTION B-B

REVISD SHEET 2-20-15

FILE NAME *	USER NAME * mcdonalds	DESIGNED - VTY	REVISED -	STATE OF ILLINOIS DEPARTMENT OF TRANSPORTATION	PAVEMENT CONSTRUCTION DETAILS (EASTBOUND LANES)	F.A.J. RTE.	SECTION	COUNTY	TOTAL SHEETS	SHEET NO.	
6:\pwork\pav\det\mcdonalds\0336055\1072092-sh1-det1.dgn		DRAWN - RIS	REVISED -			72	(84-10-2) RS-5	SANGAMON	28	25	
		CHECKED - VTY	REVISED -			CONTRACT NO. 72692		ILLINOIS FED. AID PROJECT			
Default		DATE - 10-17-14	REVISED -			SCALE:	SHEET OF SHEETS	STA. TO STA.			