

003

STATE OF ILLINOIS
DEPARTMENT OF TRANSPORTATION

FAU ROUTE	SECTION	COUNTY	TOTAL SHEETS	SHEET NO.
1300	1346 BR (11)	COOK	21	1
ILLINOIS			CONTRACT NO 60R72	

* 21 + 5 = 26 TOTAL SHEETS
D-91-205-12

FOR INDEX OF SHEETS, SEE SHEET NO. 2

PROJECT IS LOCATED
IN THE VILLAGE OF GLENVIEW

TRAFFIC DATA

CENTRAL ROAD

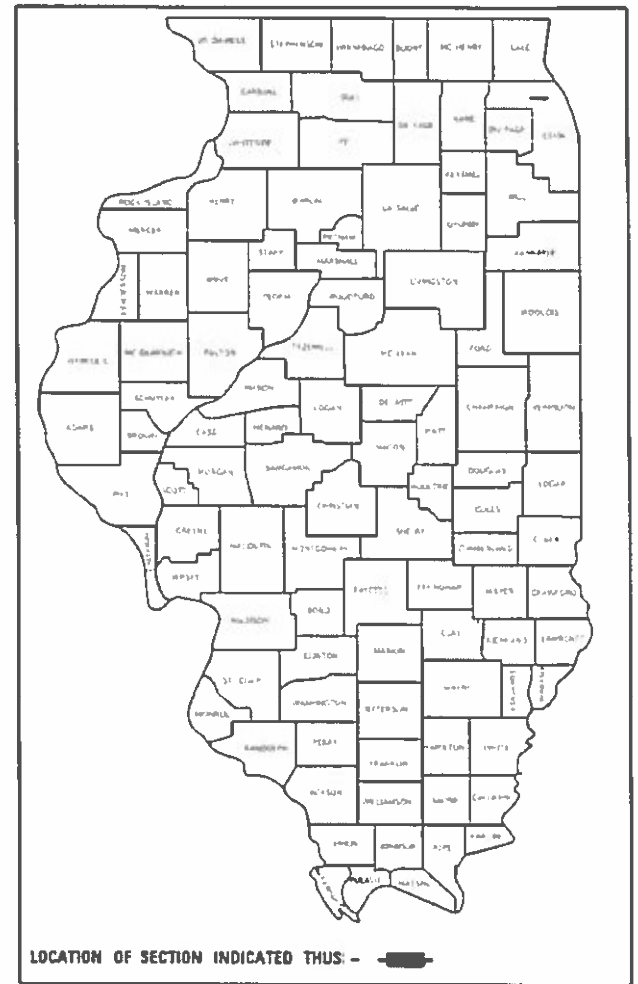
2018 ADT 15300
POSTED SPEED LIMIT 45 MPH

PROPOSED
HIGHWAY PLANS

FAU ROUTE 1300 /CENTRAL ROAD
OVER DES PLAINES RIVER
SECTION 1346-BR (11)
PROJECT: STP-ZD7S(713)
BRIDGE DECK REPAIR, BRIDGE DECK OVERLAY
COOK COUNTY

C-91-205-12

R 12 E

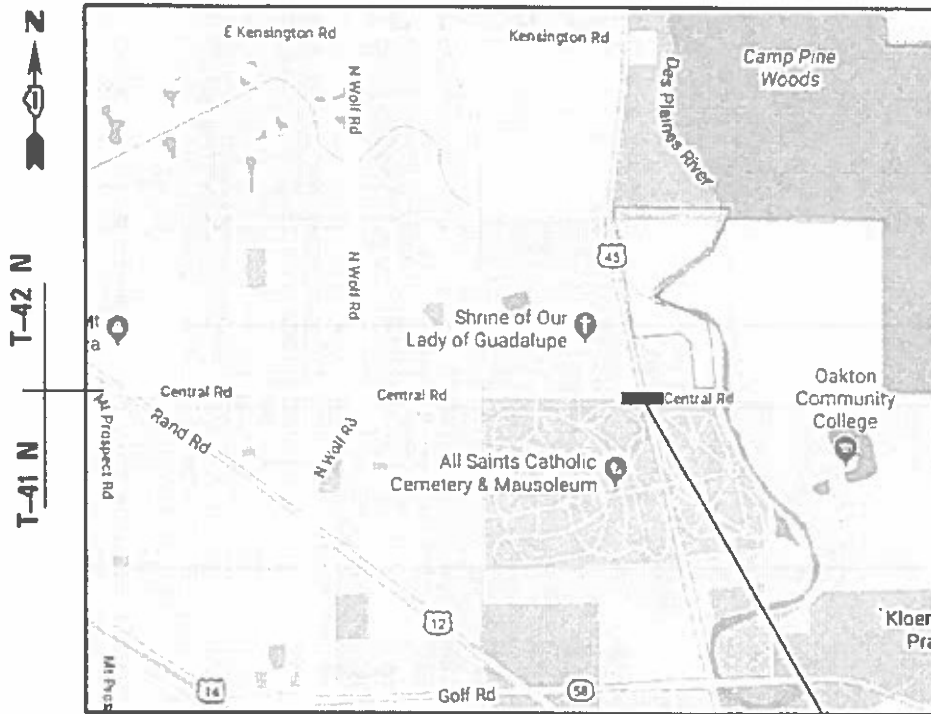


FULL SIZE PLANS HAVE BEEN PREPARED USING STANDARD
ENGINEERING SCALES. REDUCED SIZED PLANS WILL NOT
CONFORM TO STANDARD SCALES. IN MAKING MEASUREMENTS
ON REDUCED PLANS, THE ABOVE SCALES MAY BE USED.

J.U.L.I.E.
JOINT UTILITY LOCATION INFORMATION FOR EXCAVATORS
1-800-892-0123
OR 811

PROJECT ENGINEER: MIDY, J. ALAIN (847) 221-3056
PROJECT MANAGER: AQUEEL, FAWAD (847) 705-4247

CONTRACT NO. 60R72



MAINE AND NORTHFIELD TOWNSHIP

GROSS AND NET LENGTH = 219 FT. = 0.041 MILE

SN 016-0551
CENTRAL RD OVER
DES PLAINES RIVER

STATE OF ILLINOIS
DEPARTMENT OF TRANSPORTATION

SUBMITTED DECEMBER 12, 19

Anthony J. Quinly (R) REGIONAL ENGINEER

Jan 31, 20

Joseph J. [Signature] ENGINEER OF DESIGN AND ENVIRONMENT

Jan 31, 20

James [Signature] DIRECTOR OF HIGHWAYS PROJECT IMPLEMENTATION

PRINTED BY THE AUTHORITY
OF THE STATE OF ILLINOIS

INDEX OF SHEETS

- 1 Title Sheet
- 2 Index of Sheets, General Notes and Highway Standards
- 3-3A Summary of Quantities
- 4 Roadway Plan
- 5-6A Maintenance of Traffic
- 7-17 Structure Plans S1-S11
- 18 Butt Joint and HMA Taper Details (BD-32)
- 18A-18C Temporary Lighting and Traffic Signals for Single Lane Staging (BE-805)
- 19 Typical Applications Raised Reflective Pavement Markers (Snow-Plow Resistant) (TC-11)
- 20 District One Typical Pavement Markings (TC-13)
- 21 Arterial Road Information Sign (TC-22)

INDEX OF HIGHWAY STANDARDS

Standard No.	Description
420001-09	Pavement Joints
701006-05	Off Road Operations, 2L, 2W, 15' to 24" from Pavement Edge
701011-04	Off Road Moving Operations, 2L, 2W, Day Only
701301-04	Lane Closure, 2L, 2W, Short Time Operations
701306-04	Lane Closure, 2L, 2W, Slow Moving Operations Day Only, for Speeds > 45 MPH
701311-03	Lane Closure, 2L, 2W, Moving Operations-Day Only
701321-18	Lane Closure, 2L, 2W, Bridge Repair with Barrier
701326-04	Lane Closure, 2L, 2W, Pavement Widening for Speeds > 45 MPH
701901-08	Traffic Control Devices
704001-08	Temporary Concrete Barrier

GENERAL NOTES

1. These plans have been prepared from notes received from IDOT Bridge Engineers.
2. The Contractor shall coordinate construction activities with utility companies, and the Village of Glenview.
3. All damage to existing pavement markings or raised reflective pavement markers outside the removal line shown on the plans shall be replaced at no additional cost to the department.
4. Before beginning any work, the contractor shall retain and record for future reference, all existing pavement marking lines (and raised reflective pavement markers) in order that these locations can be re-established for striping. Exact locations of all pavement markings shall be as directed by the engineer.
5. The Contractor shall contact the District One Traffic Control Supervisor at Kalpana.Kannan-Hosadurga@illinois.gov a minimum of 72 hours in advance of beginning work.
6. The Resident Engineer shall contact the Area Traffic Field Engineer, Walter Czarny via Email "Walter.Czarny@illinois.gov" a minimum of two (2) weeks prior to the placement of permanent pavement markings.
7. The contractor shall be required to provide access to abutting property at all times during the construction of this project.
8. The Contractor will not be allowed to set up a yard or field office on State property without written permission from the Department.
9. Do not scale these plans for construction purposes.
10. Plan dimensions and details relative to existing plans are subject to routine variations. The Contractor shall field verify existing dimensions and details affecting new construction and make necessary approved adjustments prior to construction or ordering of materials. Such variations shall not be cause for additional compensation for a change in scope of the work. However, the Contractor will be paid for the quantity actually furnished based upon the unit price bid for the work.
11. During construction operations, loose material deposits that obstruct the flow of water in draining the area shall be removed before the end of each work day. At the conclusion of construction operations, all drainage structures (new and existing) shall be free from all dirt and debris. This work will not be paid for separately but shall be included in the pay item for Concrete Removal.
12. The quantity for Hot-Mix Asphalt Surface Course, Mix "D", N70 has been prepared assuming 1 3/4" inch thick hot-mix asphalt overlays.

HOT-MIX ASPHALT MIXTURE REQUIREMENTS		QMP
MIXTURE TYPE	AIR VOIDS @ Ndes	
<u>APPROACH SLABS & BUTT JOINTS</u>		
Hot-Mix Asphalt Surface Course, Mix "D", IL-9.5, N70: 1 3/4"	4% @ 70 Gyr.	QC/QA
<u>TEMPORARY PAVEMENT, 10" (Non-Interstate)</u>		
Hot-Mix Asphalt Surface Course, Mix "D", IL-9.5, N70: 2"	4% @ 70 Gyr.	QC/QA
Hot Mix Asphalt Binder Course, IL-9.5, N70: 8"	4% @ 70 Gyr.	QC/QA
QMP Designation: Quality Control/Quality Assurance (QC/QA);		

The unit weight used to calculate all Hot-Mix Asphalt surface mixtures is 112 lbs/sq yd/in.

The "AC Type" for all Polymerized HMA mixes shall be SBS/SBR PG 76-22" and for Non-Polymerized HMA the "AC Type" shall be "PG64-22" unless modified by the District One Special Provisions.

For use of recycled material, see Special Provisions.

Quality Management Program (QMP) identifies the particular Quality Control Specification that applies to the HMA mixture.

The Contractor has the option of using PCC Temporary Pavement: PCC Temporary Pavement shall consist of Class PV Concrete meeting the requirements of Art. 1020 of the Standard Specifications; typically 10" thick.

REV. 2-24-2020

REV. - MS

p:\lancom\ds\11\mstg\p\IDOT\Documents\IDOT_Offices\District\Projects\0120612\CADD\Design\CADD_Sheets\0160R72-ahh-gannose.dgn

FILE NAME =	USER NAME = rothjp	DESIGNED - RAG	REVISED -	STATE OF ILLINOIS DEPARTMENT OF TRANSPORTATION	GENERAL NOTES, INDEX OF SHEETS AND HIGHWAY STANDARDS	F.A.U. RTE.	SECTION	COUNTY	TOTAL SHEETS	SHEET NO.	
	DRAWN - MAP	REVISIED -				1300	1346-BR (11)	COOK	21	2	
	PLOT SCALE = 100.0000' / in.	CHECKED - MGR	REVISIED -			CONTRACT NO. 60R72					
	PLOT DATE = 12/12/2019	DATE - SEPTEMBER, 2014	REVISIED -			ILLINOIS FED. AID PROJECT					
SCALE:		SHEET NO. OF SHEETS		STA. TO STA.							

SUMMARY OF QUANTITIES			CONSTRUCTION TYPE CODE 0013				
CODE NO	ITEM	UNIT	URBAN TOTAL QUANTITIES	80% FED 20% STATE 0013			
20200100	EARTH EXCAVATION	CU YD	3	3			
40600290	BITUMINOUS MATERIALS (TACK COAT)	POUND	439	439			
40600400	MIXTURE FOR CRACKS, JOINTS, AND FLANGEWAYS	TON	1	1			
40600982	HOT-MIX ASPHALT SURFACE REMOVAL - BUTT JOINT	SO YD	207	207			
40603340	HOT-MIX ASPHALT SURFACE COURSE, MIX "D", N70	TON	65	65			
44000100	PAVEMENT REMOVAL	SO YD	97	97			
50102400	CONCRETE REMOVAL	CU YD	6	6			
50300255	CONCRETE SUPERSTRUCTURE	CU YD	6	6			
50300260	BRIDGE DECK GROOVING	SO YD	735	735			
50300300	PROTECTIVE COAT	SO YD	785	785			
50800205	REINFORCEMENT BARS, EPOXY COATED	POUND	1180	1180			
50800515	BAR SPLICERS	EACH	8	8			
52000110	PREFORMED JOINT STRIP SEAL	FOOT	112	112			
67000400	ENGINEER'S FIELD OFFICE, TYPE A	CAL MO	6	6			
67100100	MOBILIZATION	L SUM	1	1			

SUMMARY OF QUANTITIES			CONSTRUCTION TYPE CODE 0013				
CODE NO	ITEM	UNIT	URBAN TOTAL QUANTITIES	80% FED 20% STATE 0013			
70106700	TEMPORARY RUMBLE STRIPS	EACH	12	12			
70300904	PAVEMENT MARKING TAPE, TYPE IV 4"	FOOT	2220	2220			
70300924	PAVEMENT MARKING TAPE, TYPE IV 24"	FOOT	96	96			
70400100	TEMPORARY CONCRETE BARRIER	FOOT	312.5	312.5			
70400200	RELOCATE TEMPORARY CONCRETE BARRIER	FOOT	312.5	312.5			
70600241	IMPACT ATTENUATORS, TEMPORARY (NON-REDIRECTIVE, NARROW), TEST LEVEL 2	EACH	2	2			
70600341	IMPACT ATTENUATORS, RELOCATE (NON-REDIRECTIVE, NARROW), TEST LEVEL 2	EACH	2	2			
* 78000200	THERMOPLASTIC PAVEMENT MARKING - LINE 4"	FOOT	2004	2004			
* 78008210	POLYUREA PAVEMENT MARKING TYPE I - LINE 4"	FOOT	1560	1560			
* 78009004	MODIFIED URETHANE PAVEMENT MARKING - LINE 4"	FOOT	3564	3564			
* 78100100	RAISED REFLECTIVE PAVEMENT MARKER	EACH	8	8			
78100300	REPLACEMENT REFLECTOR	EACH	8	8			
78200011	BARRIER WALL REFLECTORS, TYPE C	EACH	120	120			
78300200	RAISED REFLECTIVE PAVEMENT MARKER REMOVAL	EACH	8	8			
* 85000200	MAINTENANCE OF EXISTING TRAFFIC SIGNAL INSTALLATION	EACH	1	1			

* ~~85000200~~ MAINTENANCE OF EXISTING TRAFFIC SIGNAL INSTALLATION

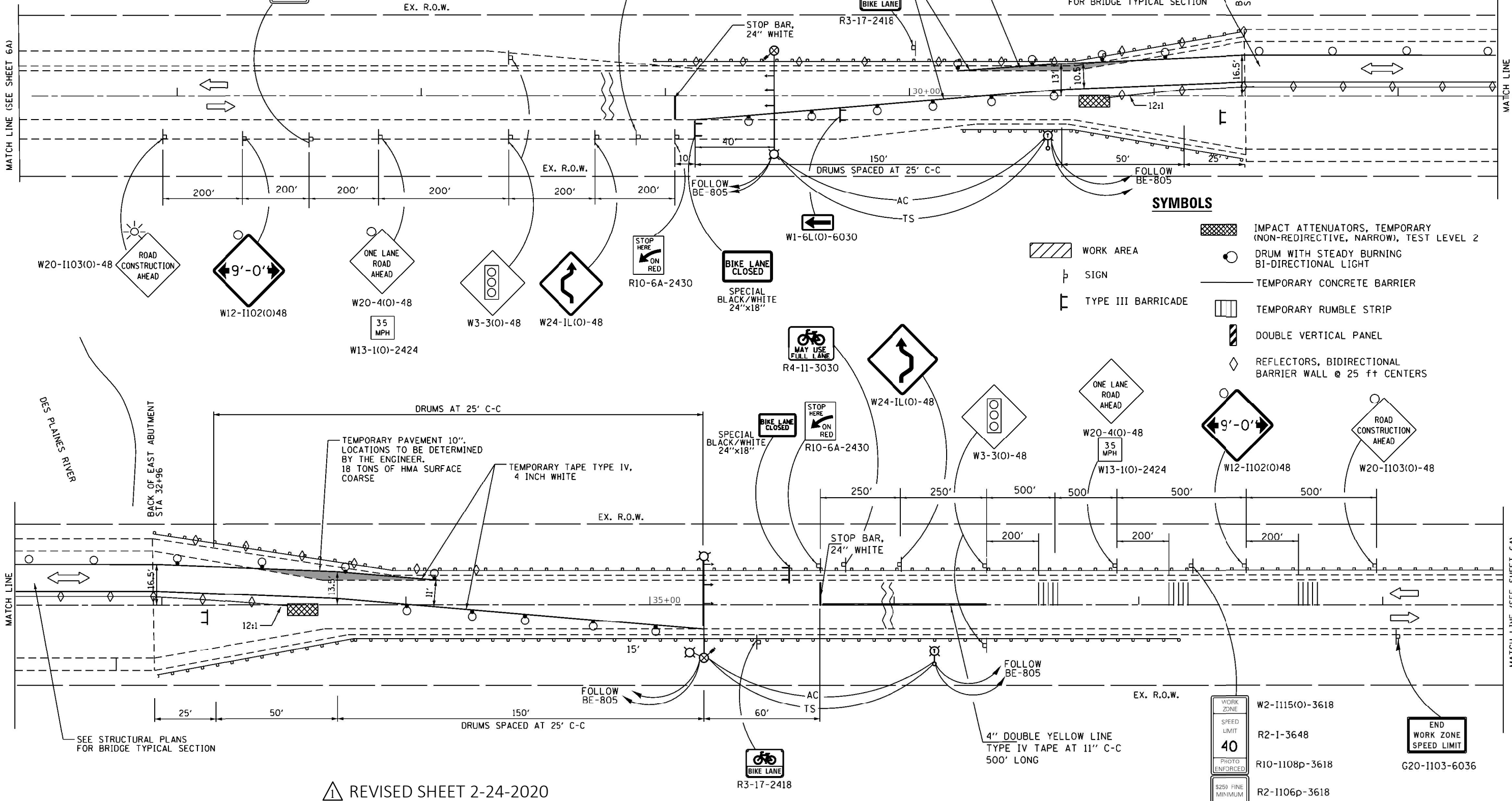
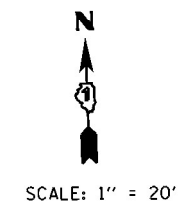


REV. 2-24-2020

REV. - MS

- ① TYPE III BARRICADE TO BE PLACED WHEN NO WORK IS BEING PERFORMED.
- ② BARRIER WALL / GUARDRAIL REFLECTORS AT 25' C-C. SEE STD. 704001 AND 782006

WORK ZONE
SPEED LIMIT
40
PHOTO ENFORCED
R2-1115(O)-3618
R2-I-3648
R10-1108p-3618
R2-1106p-3618
\$250 FINE MINIMUM



- SYMBOLS**
- WORK AREA
 - SIGN
 - TYPE III BARRICADE
 - TEMPORARY RUMBLE STRIP
 - DOUBLE VERTICAL PANEL
 - REFLECTORS, BIDIRECTIONAL BARRIER WALL @ 25' CENTERS
 - IMPACT ATTENUATORS, TEMPORARY (NON-REDIRECTIVE, NARROW), TEST LEVEL 2
 - DRUM WITH STEADY BURNING BI-DIRECTIONAL LIGHT
 - TEMPORARY CONCRETE BARRIER
 - TEMPORARY RUMBLE STRIP
 - DOUBLE VERTICAL PANEL
 - REFLECTORS, BIDIRECTIONAL BARRIER WALL @ 25' CENTERS

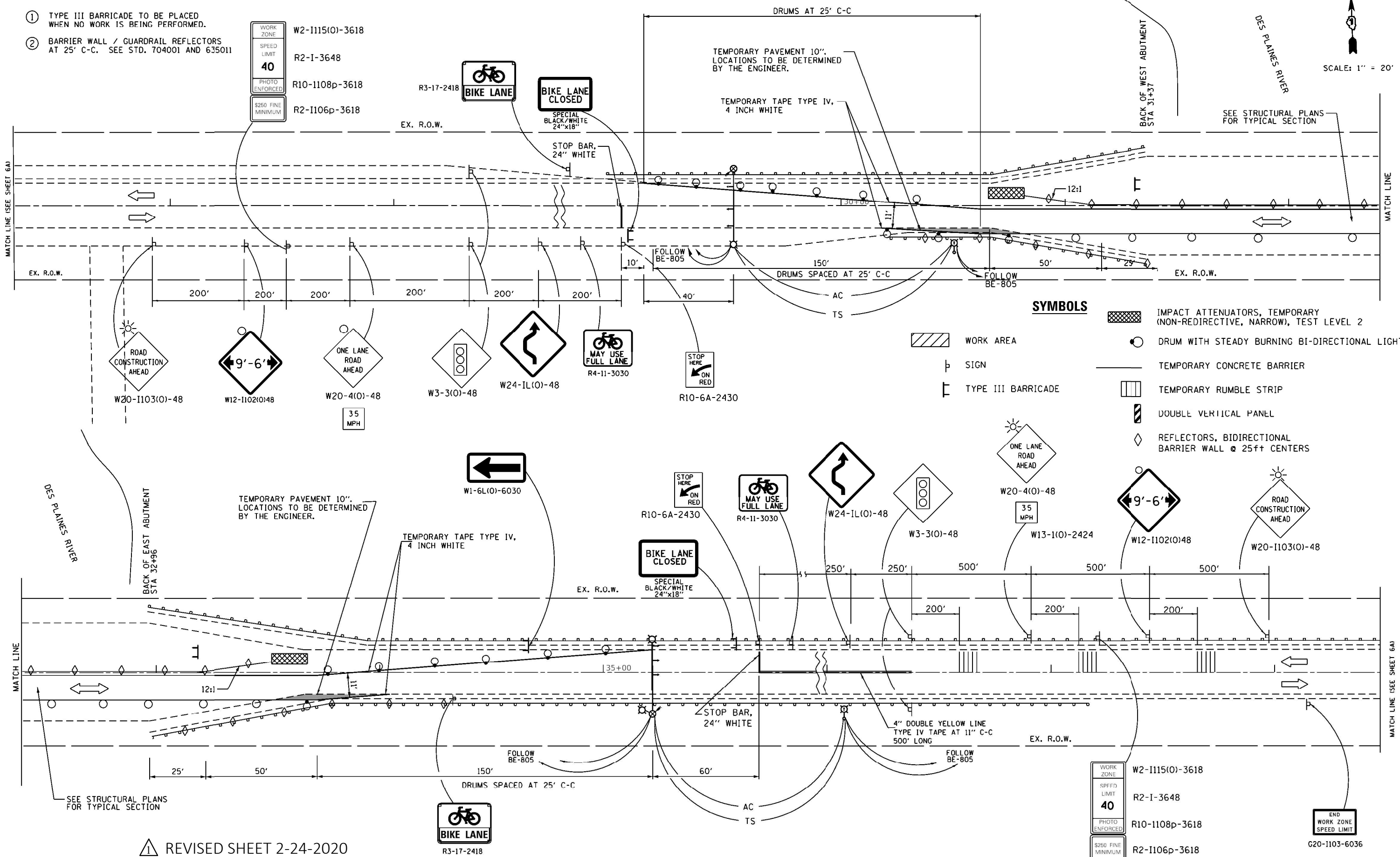
△ REVISED SHEET 2-24-2020

FILE NAME :	USER NAME = gorenautob	DESIGNED - MR	REVISED -	STATE OF ILLINOIS DEPARTMENT OF TRANSPORTATION	CENTRAL ROAD OVER DES PLAINES RIVER MAINTENANCE OF TRAFFIC STAGE I			F.A.U. RTE.	SECTION	COUNTY	TOTAL SHEETS	SHEET NO.	
	PLOT SCALE = 48.0000' / in.	CHECKED - MGR	REVISED -		SCALE:	SHEET NO.	OF SHEETS	STA.	TO STA.	1300	1346-BR (11)	COOK	21
PLOT DATE = 2/21/2020	DATE - SEPTEMBER, 2014	REVISED -	REVISED -								CONTRACT NO. 60R72		ILLINOIS FED. AID PROJECT

- ① TYPE III BARRICADE TO BE PLACED WHEN NO WORK IS BEING PERFORMED.
- ② BARRIER WALL / GUARDRAIL REFLECTORS AT 25' C-C. SEE STD. 704001 AND 635011

WORK ZONE	W2-I115(O)-3618
SPEED LIMIT	R2-I-3648
PHOTO ENFORCED	R10-I108p-3618
\$250 FINE MINIMUM	R2-I106p-3618

SCALE: 1" = 20'



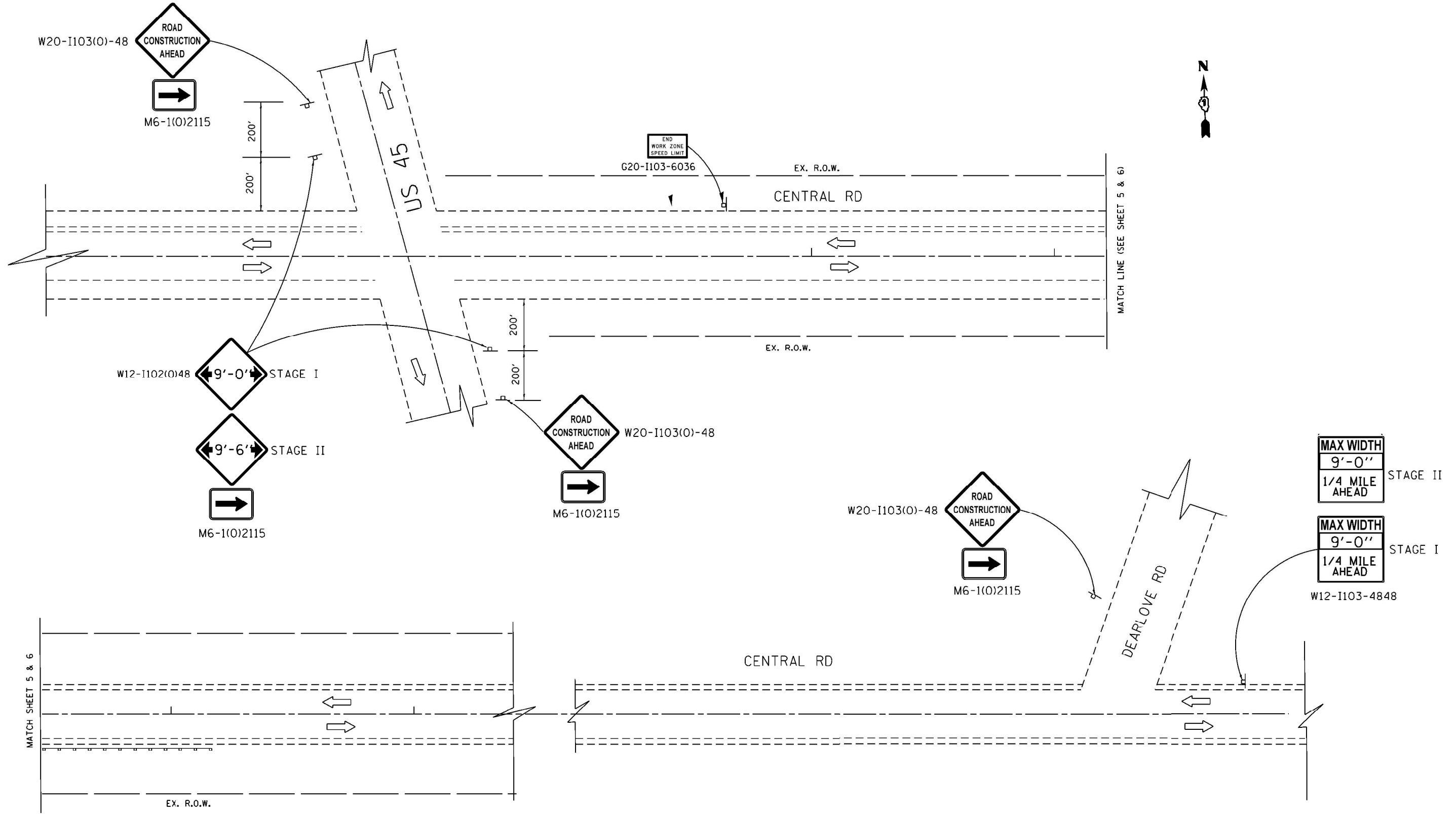
SYMBOLS

	WORK AREA		IMPACT ATTENUATORS, TEMPORARY (NON-REDIRECTIVE, NARROW), TEST LEVEL 2
	DRUM WITH STEADY BURNING BI-DIRECTIONAL LIGHT		TEMPORARY CONCRETE BARRIER
	SIGN		TEMPORARY RUMBLE STRIP
	TYPE III BARRICADE		DOUBLE VERTICAL PANEL
	REFLECTORS, BIDIRECTIONAL BARRIER WALL @ 25ft CENTERS		

REVISOR: [Symbol] REVISED SHEET 2-24-2020

FILE NAME :	USER NAME = gorenautob	DESIGNED - MR	REVISED -	STATE OF ILLINOIS DEPARTMENT OF TRANSPORTATION	CENTRAL ROAD OVER DES PLAINES RIVER MAINTENANCE OF TRAFFIC STAGE II			F.A.U. RTE.	SECTION	COUNTY	TOTAL SHEETS	SHEET NO.
	PLOT SCALE = 48.0000' / in.	CHECKED - MGR	REVISED -		SCALE:	SHEET NO.	OF SHEETS	STA.	TO STA.	1300	1346-BR (11)	COOK
PLOT DATE = 2/21/2020	DATE - SEPTEMBER, 2014	REVISED -							CONTRACT NO. 60R72			
									ILLINOIS FED. AID PROJECT			

p:\planning\com\docs\illinois\gov\p\1001\Documents\1001_Offices\Dist\ct\Projects\102052\CADD\Design\CADD_Sheets\106872-shr-traffic\106872.dgn



SHEET ADDED 2-24-2020

FILE NAME :	USER NAME = gorenautob	DESIGNED - MR	REVISED -	STATE OF ILLINOIS DEPARTMENT OF TRANSPORTATION	CENTRAL ROAD OVER DES PLAINES RIVER MAINTENANCE OF TRAFFIC STAGE I			F.A.U. RTE.	SECTION	COUNTY	TOTAL SHEETS	SHEET NO.
		DRAWN - MR	REVISED -		1300	1346-BR (11)	COOK	21	6A			
	PLOT SCALE = 48.0000' / in.	CHECKED - MGR	REVISED -		CONTRACT NO. 60R72							
	PLOT DATE = 2/21/2020	DATE - SEPTEMBER, 2014	REVISED -		ILLINOIS FED. AID PROJECT							
				SCALE:	SHEET NO.	OF SHEETS	STA.	TO STA.				

1
TOTAL BILL OF MATERIAL

ITEM DESCRIPTION	UNIT	QUANTITY
Bituminous Materials (Tack Coat)	Pound	215
Hot-Mix Asphalt Surface Course Mix "D", N70	Ton	41
Protective Coat	Sq. Yd.	785
Concrete Removal	Cu. Yd.	6.0
Concrete Superstructure	Cu. Yd.	6.0
Reinforcement Bars, Epoxy Coated	Pound	1,180
Bar Splicers	Each	8
Preformed Joint Strip Seal	Foot	112.0
Approach Slab Repairs (Partial Depth)	Sq. Yd.	6
Structural Repair of Concrete (Depth Equal or Less Than, 5")	Sq. Ft.	334
Bridge Deck Latex Concrete Overlay, 2 1/2"	Sq. Yd.	752
Bridge Deck Scarification, 3/4"	Sq. Yd.	755
Bridge Deck Grooving	Sq. Yd.	735
Polymer Concrete	Cu. Ft.	5.4
Deck Slab Repair (Full Depth, Type II)	Sq. Yd.	26.4
Debris Removal	Cu. Yd.	60

GENERAL NOTES:

Reinforcement bars designated (E) shall be epoxy coated.
 Plan dimensions and details relative to existing plans are subject to nominal construction variations. The Contractor shall field verify existing dimensions and details affecting new construction and make necessary approved adjustments prior to construction or ordering of materials. Such variations shall not be cause for additional compensation for a change in scope of the work, however, the Contractor will be paid for the quantity actually furnished at the unit price bid for the work.
 Staged construction shall be utilized to maintain traffic during construction. The Contractor shall exercise care during removal of existing joints to ensure that the slab, beams and diaphragms' integrity will not be detrimentally impacted. The Contractor shall repair any damage(s) to the slab, beams or diaphragms caused by his operation as directed by the Engineer at no additional cost to the Department.
 Protective coat shall be applied to New concrete areas adjacent to transverse joint reconstruction, and concrete overlay areas.
 Joint openings shall be adjusted according to Article 520.04 of the Std. Specs. when the deck is poured at an ambient temperature other than 50°F.
 The removal and reattachment of guardrail, hand rail, steel railings, traffic barrier terminal, and etcetera required for repair work (e.g. transverse joint replacement and curb and gutter replacement) shall be included in the contract unit price of the work item being performed.
 Cost for removal and disposal of existing expansion joints is included in the cost of Concrete Removal.
 The Contractor is responsible for preventing debris from falling on the waterway. This work will not be paid for separately, but shall be included in the appropriate pay item.

1 REV. 2-24-2020

DESIGNED - CCC	EXAMINED	DATE - January 30, 2020	STATE OF ILLINOIS DEPARTMENT OF TRANSPORTATION	GENERAL DATA SN 016 - 0551	F.A. RTE.	SECTION	COUNTY	TOTAL SHEETS	SHEET NO.	
CHECKED - ATH	 ENGINEER OF STRUCTURAL SERVICES	REVISED 02/11/2020 VHV			1300	1346 - BR (11)	COOK	21	8	
DRAWN - Venkat Reddy	PASSED	REVISED -			CONTRACT NO. 60R72					
CHECKED - CCC ATH	 ENGINEER OF BRIDGES AND STRUCTURES				ILLINOIS FED. AID PROJECT					