

015

FOR INDEX OF SHEETS, SEE SHEET NO. 2

STATE OF ILLINOIS
 DEPARTMENT OF TRANSPORTATION
**PROPOSED
 HIGHWAY PLANS**
 VARIOUS ROUTES
 SECTION: 2019-004-1
 PROJECT NO.: HSIP-EJN4(216)
 GUARDRAIL END SECTION REPLACEMENT AND
 NEW GUARDRAIL INSTALLATION (SOUTH SECTION)
 COOK, WILL AND DUPAGE COUNTY
 C-91-328-19

- PROJECT LOCATED IN:
- VILLAGE OF CHICAGO RIDGE
 - VILLAGE OF MATTESON
 - VILLAGE OF ROMEOVILLE
 - VILLAGE OF WOODRIDGE
 - VILLAGE OF GLEN ELLYN
 - VILLAGE OF BRIDGEVIEW
 - VILLAGE OF LOMBARD
 - VILLAGE OF PALOS PARK
 - VILLAGE OF LISLE
 - VILLAGE OF FLOSSMOOR
 - VILLAGE OF OAK LAWN
 - VILLAGE OF ORLAND PARK
 - VILLAGE OF ALSIP
 - VILLAGE OF OAK BROOK
 - CITY OF PALOS HEIGHTS
 - CITY OF OAK FOREST
 - CITY OF WARRENVILLE
 - CITY OF NAPERVILLE
 - BREMEN TOWNSHIP
 - LEMONT TOWNSHIP
 - LYONS TOWNSHIP
 - MILTON TOWNSHIP
 - WINDFIELD TOWNSHIP



STATE OF ILLINOIS
 DEPARTMENT OF TRANSPORTATION

SUBMITTED December 4, 2019

[Signature]
 REGIONAL ENGINEER

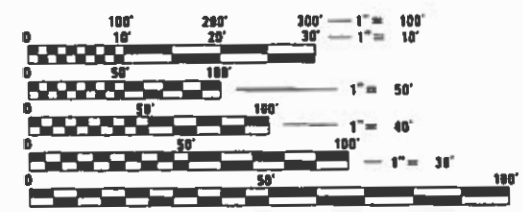
Jan 31, 2020
 ENGINEER OF DESIGN AND ENVIRONMENT

Jan 31, 2020
 DIRECTOR OF HIGHWAYS PROJECT IMPLEMENTATION

2600 Warrenville Road, Suite 203
 Downers Grove, Illinois 60515
 630.705.0110 voice, 630.839.2588 fax
 www.millennia.pro

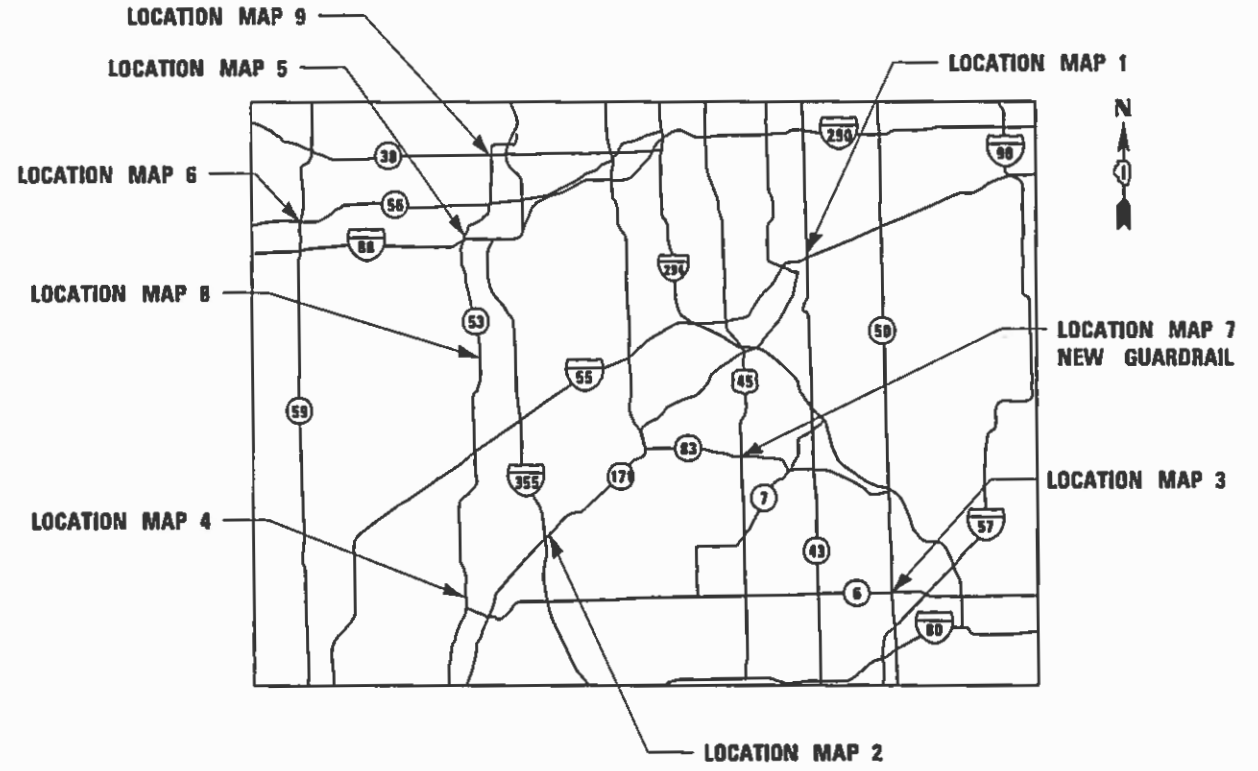
MILLENNIA PROFESSIONAL SERVICES

**PRINTED BY THE AUTHORITY
OF THE STATE OF ILLINOIS**



FULL SIZE PLANS HAVE BEEN PREPARED USING STANDARD ENGINEERING SCALES. REDUCED SIZED PLANS WILL NOT CONFORM TO STANDARD SCALES. IN MAKING MEASUREMENTS ON REDUCED PLANS, THE ABOVE SCALES MAY BE USED.

J.U.L.I.E.
 JOINT UTILITY LOCATION INFORMATION FOR EXCAVATION
 1-800-892-0123
 OR 811



LOCATION MAP
NOT TO SCALE

MILLENNIA PROFESSIONAL SERVICES
 MATTHEW D. KOEHLER, P.E.
 • 062-067917

[Signature]
 DATE: 12/10/19
 SIGNATURE AND SEAL APPLIES TO DRWG.



PROJECT ENGINEER: DAN WILGREEN (847) 705-4240
 PROJECT MANAGER: FAWAD F. AQUEEL (847) 705-4247

CONTRACT NO. 62H85

INDEX OF SHEETS

- 1 COVER SHEET
- 2 INDEX OF SHEETS, HIGHWAY STANDARDS, AND GENERAL NOTES
- 3-4 SUMMARY OF QUANTITIES
- 5 SCHEDULE OF QUANTITIES
- 6-7 LOCATION MAPS
- 8-9 PLAN SHEETS (LOCATION 1 AND 2)
- 10 DETAILS FOR DEPRESSED CURB & GUTTER AND SHOULDER TREATMENT AT TBT TY 1 SPL. (BD-34)
- 11 BENCHING DETAIL FOR EMBANKMENT WIDENING (BD-51)
- 12-15 REMOVE AND REERECT STEEL PLATE BEAM GUARDRAIL (BM-21)
- 16 TRAFFIC CONTROL AND PROTECTION FOR SIDE ROADS, INTERSECTIONS, AND DRIVEWAYS (TC-10)
- 17 TRAFFIC CONTROL AND PROTECTION AT TURN BAYS (TO REMAIN OPEN TO TRAFFIC) (TC-14)
- 18 TRAFFIC CONTROL DETAILS FOR FREEWAY SHOULDER CLOSURES AND PARTIAL RAMP CLOSURES (TC-17)
- 19 ARTERIAL ROAD INFORMATION SIGN (TC-22)
- 20-21 CROSS SECTIONS

LIST OF ILLINOIS DOT HIGHWAY STANDARDS

- 000001-07 STANDARD SYMBOLS, ABBREVIATIONS, AND PATTERNS
- 280001-07 TEMPORARY EROSION CONTROL SYSTEMS
- 630001-12 STEEL PLATE BEAM GUARDRAIL
- 630101-10 STRONG POST GUARDRAIL ATTACHED TO CULVERT
- 630301-09 SHOULDER WIDENING FOR TYPE 1 (SPECIAL) GUARDRAIL TERMINALS
- 635001-02 DELINEATORS
- 701001-02 OFF-RD OPERATIONS, 2L, 2W, MORE THAN 15' AWAY
- 701006-05 OFF-RD OPERATIONS, 2L,2W, 15' TO 24" FROM PAVEMENT EDGE
- 701011-04 OFF-RD MOVING OPERATIONS, 2L, 2W, DAY ONLY
- 701101-05 OFF-RD OPERATIONS, MULTILANE, 15' TO 24" FROM PAVEMENT EDGE
- 701106-02 OFF-RD OPERATIONS, MULTILANE, MORE THAN 15' AWAY
- 701301-04 LANE CLOSURE, 2L, 2W, SHORT TIME OPERATIONS
- 701306-04 LANE CLOSURE, 2L, 2W, SLOW MOVING OPERATIONS DAY ONLY, FOR SPEED > OR = 45 MPH
- 701311-03 LANE CLOSURE, 2L, 2W MOVING OPERATIONS - DAY ONLY
- 701336-07 LANE CLOSURE, 2L, 2W, WORK AREAS IN SERIES, FOR SPEEDS > OR = 45 MPH
- 701421-08 LANE CLOSURE, MULTILANE, DAY OPERATIONS ONLY, FOR SPEEDS > OR = 45 MPH TO 55 MPH
- 701426-09 LANE CLOSURE, MULTILANE, INTERMITTENT OR MOVING OPER., FOR SPEEDS > OR = 45 MPH
- 701427-05 LANE CLOSURE, MULTILANE, INTERMITTENT OR MOVING OPER., FOR SPEEDS < 40 MPH OR = 40 MPH
- 701501-06 URBAN LANE CLOSURE, 2L, 2W, UNDIVIDED
- 701502-09 URBAN LANE CLOSURE, 2L, 2W, WITH BIDIRECTIONAL LEFT TURN LANE
- 701601-09 URBAN LANE CLOSURE, MULTILANE, 1W OR 2W WITH NONTRAVERSABLE MEDIAN
- 701602-10 URBAN LANE CLOSURE, MULTILANE, 2W WITH BIDIRECTIONAL LEFT TURN LANE
- 701606-10 URBAN SINGLE LANE CLOSURE, MULTILANE, 2W WITH MOUNTABLE MEDIAN
- 701701-10 URBAN LANE CLOSURE, MULTILANE INTERSECTION
- 701901-08 TRAFFIC CONTROL DEVICES
- 725001-01 OBJECT AND TERMINAL MARKERS
- 782006-01 GUARDRAIL AND BARRIER WALL REFLECTOR MOUNTING DETAILS

HOT-MIX ASPHALT MIXTURE REQUIREMENTS

MIXTURE TYPE	AIR VOIDS @ Ndes	OMP TYPE
HMA SHOULDER, 6"		
HOT-MIX ASPHALT BINDER, IL-19, 6"	4% @ 50 GYR.	QC/QA
OMP DESIGNATION: QUALITY CONTROL / QUALITY ASSURANCE (QC/QA);		

MIXTURE NOTES

- 1. THE UNIT WEIGHT USED TO CALCULATE ALL HOT-MIX ASPHALT SURFACE MIXTURES IS 112 LBS/SQ YD/IN
- 2. THE "AC TYPE" FOR POLYMERIZED HMA MIXES SHALL BE "SBS/SBR PG 76-22" AND FOR NON-POLYMERIZED HMA THE "AC TYPE" SHALL BE "PG 64-22" UNLESS MODIFIED BY DISTRICT ONE SPECIAL PROVISIONS. FOR USE OF RECYCLED MATERIALS SEE DISTRICT ONE SPECIAL PROVISIONS.
- 3. QUALITY MANAGEMENT PROGRAM (OMP) IDENTIFIES THE PARTICULAR QUALITY CONTROL SPECIFICATION THAT APPLIES TO THE HMA MIXTURE.

GENERAL NOTES

- 1 BEFORE STARTING ANY EXCAVATION, THE CONTRACTOR SHALL CALL "J.U.L.I.E." AT (800) 892-0123 OR 811 OR DIGGER AT 312-744-700 FOR FIELD LOCATIONS OF BURIED ELECTRIC, TELEPHONE AND GAS UTILITIES. 48 HOUR NOTIFICATION IS REQUIRED.
- 2 MEADE ELECTRIC CO. DISTRICT ONE ELECTRICAL MAINTENANCE CONTRACTOR LOCATES IDOT ELECTRICAL EQUIPMENT AND UNDERGROUND CABLES 773-287-7672.
- 3 THE CONTRACTOR SHALL BE RESPONSIBLE FOR PROTECTING UTILITY PROPERTY FROM CONSTRUCTION OPERATIONS AS OUTLINED IN ARTICLE 107.39 OF THE STANDARD SPECIFICATIONS. ANY DAMAGE TO THE UNDERGROUND FACILITIES CAUSED BY THE CONTRACTOR SHALL BE REPAIRED TO THE SATISFACTION OF THE DEPARTMENT AT THE CONTRACTOR'S EXPENSE, INCLUDING TEMPORARY REPAIRS WHICH MAY BE REQUIRED TO KEEP THE FACILITY OPERATIONAL WHILE MATERIAL IS BEING OBTAINED TO MAKE PERMANENT REPAIRS.
- 4 THE CONTRACTOR SHALL COORDINATE CONSTRUCTION ACTIVITIES WITH UTILITY COMPANIES, AND THE MUNICIPALITIES LISTED ON THE COVER SHEET.
- 5 THE RESIDENT ENGINEER SHALL CONTACT THE DEPARTMENT'S ELECTRICAL MAINTENANCE CONTRACTOR, MEADE ELECTRIC COMPANY, AT (773) 287-7672 PRIOR TO THE START OF CONSTRUCTION TO LOCATE ALL IDOT ELECTRICAL EQUIPMENT AND UNDERGROUND CABLES.
- 6 THE CONTRACTOR SHALL CONTACT THE DISTRICT ONE TRAFFIC CONTROL SUPERVISOR AT KALPANA.KANNAN-HOSADURGA@ILLINOIS.GOV AND THE EXPRESSWAY TRAFFIC CONTROL SUPERVISOR CLOSURES ON THE EXPRESSWAYS AT (847) 705-4155 A MINIMUM OF 72 HOURS IN ADVANCE OF BEGINNING WORK. THE CONTRACTOR SHALL REGISTER ACCOUNT AT WWW.IDOTLCS.COM TO REQUEST.
- 7 THE CONTRACTOR WILL NOT BE ALLOWED TO SET UP A YARD OR FIELD OFFICE ON STATE PROPERTY WITHOUT WRITTEN PERMISSION FROM THE DEPARTMENT.
- 8 THE CONTRACTOR SHALL BE REQUIRED TO PROVIDE ACCESS TO ABUTTING PROPERTY AT ALL TIMES DURING THE CONSTRUCTION OF THIS PROJECT.
- 9 IN ADDITION TO FIELD AND AERIAL SURVEYS, PLAN DIMENSIONS AND DETAILS RELATIVE TO THE EXISTING FACILITIES HAVE BEEN TAKEN FROM EXISTING PLANS AND ARE SUBJECT TO CONSTRUCTION VARIATIONS. IT SHALL BE THE CONTRACTOR'S RESPONSIBILITY TO VERIFY SUCH DIMENSIONS AND EXISTING CONDITIONS IN THE FIELD PRIOR TO CONSTRUCTION AND ORDERING MATERIALS. SUCH VARIATIONS SHALL NOT BE A CAUSE FOR ADDITIONAL COMPENSATION DUE TO A CHANGE IN THE SCOPE OF WORK. HOWEVER, THE CONTRACTOR WILL BE PAID FOR THE QUANTITY ACTUALLY FURNISHED AT THE UNIT PRICE BID FOR THE WORK.
- 10 THE LOCATIONS OF THOSE BURIED AND ABOVE GROUND UTILITIES SHOWN ARE APPROXIMATE, ARE SHOWN FOR CONTRACTOR INFORMATIONAL USE ONLY, AND ARE NOT TO BE REFERENCED FOR CONSTRUCTION PURPOSES. THE IMPLIED PRESENCE OR ABSENCE OF UTILITIES IS NOT TO BE CONSTRUED BY THE OWNER, ENGINEER, CONTRACTOR, OR SUBCONTRACTOR TO BE AN ACCURATE AND COMPLETE REPRESENTATION OF UTILITIES THAT MAY OR MAY NOT EXIST ON THE CONSTRUCTION SITE. BURIED AND ABOVE GROUND UTILITY LOCATIONS, IDENTIFICATION, AND MARKING ARE THE SOLE RESPONSIBILITY OF THE CONTRACTOR. REROUTING, DISCONNECTION, PROTECTION, ETC. OF ANY UTILITIES MUST BE COORDINATED BETWEEN CONTRACTOR, UTILITY COMPANY, AND OWNER. SITE SAFETY, INCLUDING THE AVOIDANCE OF HAZARDS ASSOCIATED WITH BURIED AND ABOVE GROUND UTILITIES REMAIN THE SOLE RESPONSIBILITY OF THE CONTRACTOR.
- 11 DO NOT SCALE PLANS FOR CONSTRUCTION DIMENSIONS.
- 12 THE CONTRACTOR SHALL TAKE ALL NECESSARY PRECAUTIONS FOR THE PROTECTION OF EXISTING PLANT MATERIAL FOR WHICH THE CONTRACT DOES NOT PROVIDE REMOVAL. THE PROTECTION OF EXISTING PLANT MATERIAL AND THE REPAIR OR REPLACEMENT OF EXISTING PLANT MATERIAL DAMAGED BY THE CONTRACTOR SHALL BE DONE IN ACCORDANCE WITH THE REQUIREMENTS OF SECTION 201 OF THE STANDARD SPECIFICATIONS.
- 13 WHERE SECTION OR SUB-SECTION MONUMENTS ARE ENCOUNTERED, THE ENGINEER SHALL BE NOTIFIED BEFORE SUCH MONUMENTS ARE REMOVED. THE CONTRACTOR SHALL PROTECT AND CAREFULLY PRESERVE ALL PROPERTY MARKERS AND MONUMENTS UNTIL THE OWNER, AN AUTHORIZED SURVEYOR, OR AGENT HAS WITNESSED THEIR LOCATION.
- 14 FRAMES AND GRATES ADJUSTMENT OF PRIVATE UTILITIES WITHIN THE LIMITS OF THE IMPROVEMENTS SHALL BE DONE BY THEIR RESPECTIVE OWNERS AND ARE NOT PART OF THIS CONTRACT.
- 15 THE CONTRACTOR SHALL VERIFY THE EXISTING TYPE/HEIGHT OF EXISTING GUARDRAIL BEFORE ORDERING THE NEW TERMINAL SECTION. THE TERMINAL SECTION SHALL MATCH THE HEIGHT OF THE EXISTING GUARDRAIL.
- 16 REMOVED GUARDRAIL MUST BE REPLACED ON THE SAME DAY UNLESS AUTHORIZED BY THE RESIDENT ENGINEER. NO LOCATIONS WILL BE LEFT WITHOUT EITHER LIGHTED BARRICADES OR RESTORED GUARDRAIL AT ANY TIME.
- 17 THE CONTRACTOR SHALL ONLY PERFORM WORK ON ONE SIDE OF THE ROADWAY AT ANY TIME.
- 18 NO MATERIAL SHOULD BE LEFT ON OR NEAR THE ROADWAY DURING NON-WORKING HOURS.
- 19 WHEN GUARDRAIL POSTS ARE PLACED BEHIND CONCRETE HEADWALLS, THE POSTS SHALL NOT BE PLACED TO BLOCK THE DRAINAGE OPENING.

COMMITMENTS

NO COMMITMENTS FOR THIS PROJECT

**STATE OF ILLINOIS
DEPARTMENT OF TRANSPORTATION**

**GUARDRAIL REPLACEMENT (SOUTH AND CENTRAL SECTION)
INDEX OF SHEETS, HIGHWAY STANDARDS, AND GENERAL NOTES**

F.A. RTE.	SECTION	COUNTY	TOTAL SHEETS	SHEET NO.
VAR.	2019-004-I	VARIOUS	21	2
CONTRACT NO. 62H85				
FED. ROAD DIST. NO. 1 ILLINOIS FED. AID PROJECT				



USER NAME = mikochlr	DESIGNED - TN	REVISED -
	DRAWN - JP	REVISED -
PLOT SCALE = 2,0000' / in.	CHECKED - TN	REVISED -
PLOT DATE = 12/9/2019	DATE - 12/9/2019	REVISED -

FILE NAME = P:\2019\ME19003_Ver-Var-PH1\W010_62H85_62H86_Guardrail_Replacements\01-CA0D\02-Shts\62H85\03-DI62H85-sht-500.dgn
 PLOT SCALE = 2.0000' / 1" / in.
 USER NAME = Millennium Professional Services

PAYCODE	ITEM DESCRIPTION	UNIT	TOTAL QUANTITIES URBAN	CONSTRUCTION TYPE CODE		
				COOK COUNTY 90% FED 10% STATE 0021	WILL COUNTY 90% FED 10% STATE 0021	DUPAGE COUNTY 90% FED 10% STATE 0021
20200100	EARTH EXCAVATION	CU YD	27	27		
20201200	REMOVAL AND DISPOSAL OF UNSUITABLE MATERIAL	CU YD	27	27		
20400800	FURNISHED EXCAVATION	CU YD	7	7		
21101505	TOPSOIL EXCAVATION AND PLACEMENT	CU YD	83	83		
21101615	TOPSOIL FURNISH AND PLACE, 4"	SQ YD	165	75	15	75
25000210	SEEDING, CLASS 2A	ACRE	0.30	0.10	0.10	0.10
25000312	SEEDING, CLASS 4A	ACRE	0.30	0.10	0.10	0.10
25000400	NITROGEN FERTILIZER NUTRIENT	POUND	27	9	9	9
25000500	PHOSPHORUS FERTILIZER NUTRIENT	POUND	27	9	9	9
25000600	POTASSIUM FERTILIZER NUTRIENT	POUND	27	9	9	9
25100630	EROSION CONTROL BLANKET	SQ YD	1452	484	484	484
25100635	HEAVY DUTY EROSION CONTROL BLANKET	SQ YD	1452	484	484	484
40600290	BITUMINOUS MATERIALS (TACK COAT)	POUND	167	123		44
44004250	PAVED SHOULDER REMOVAL	SQ YD	285	90		195
48101620	AGGREGATE SHOULDERS, TYPE B 10"	SQ YD	366	200	15	151
48203021	HOT-MIX ASPHALT SHOULDERS, 6"	SQ YD	741	546		195
* 63000001	STEEL PLATE BEAM GUARDRAIL, TYPE A, 6 FOOT POSTS	FOOT	125.0	75.0		50.0
* 63000003	STEEL PLATE BEAM GUARDRAIL, TYPE A, 9 FOOT POSTS	FOOT	250.0	250.0		
* 63100045	TRAFFIC BARRIER TERMINAL, TYPE 2	EACH	1	1		
* 63100167	TRAFFIC BARRIER TERMINAL, TYPE 1 (SPECIAL) TANGENT	EACH	47	17	3	27
63200310	GUARDRAIL REMOVAL	FOOT	2289	789	150	1350
* 66900200	NON-SPECIAL WASTE DISPOSAL	CU YD	27	27		
* 66900530	SOIL DISPOSAL ANALYSIS	EACH	1	1		
* 66901001	REGULATED SUBSTANCES PRE-CONSTRUCTION PLAN	LSUM	1	1		
* 66901003	REGULATED SUBSTANCES FINAL CONSTRUCTION REPORT	LSUM	1	1		
* 66901006	REGULATED SUBSTANCES MONITORING	CAL DA	5	5		
67000400	ENGINEER'S FIELD OFFICE, TYPE A	CAL MO	6	2	1	3
67100100	MOBILIZATION	L SUM	1	0.4	0.1	0.5
70100310	TRAFFIC CONTROL AND PROTECTION, STANDARD 701421	L SUM	1	0.4	0.1	0.5

• DENOTES SPECIALTY ITEM



USER NAME = mikochlr	DESIGNED - TN	REVISED -
	DRAWN - JP	REVISED -
PLOT SCALE = 2.0000' / 1" / in.	CHECKED - TN	REVISED -
PLOT DATE = 12/12/2019	DATE - 12/12/2019	REVISED -

STATE OF ILLINOIS
DEPARTMENT OF TRANSPORTATION

GUARDRAIL REPLACEMENT (SOUTH AND CENTRAL SECTION)
SUMMARY OF QUANTITIES

SCALE: N/A	SHEET NO. 1 OF 2 SHEETS	STA. TO STA.
------------	-------------------------	--------------

F.A. RTE.	SECTION	COUNTY	TOTAL SHEETS	SHEET NO.
VAR.	2019-004-I	VARIOUS	21	3
FED. ROAD DIST. NO. 1 ILLINOIS FED. AID PROJECT			CONTRACT NO. 62H85	

P:\2019\ME19003_Ver-Var-PH1\W010_62H85_62H86_Guardrail_Replacements\01-CA0D\02-Shts\62H85\03-DI62H85-sht-500.dgn

GUARDRAIL REPLACEMENT SCHEDULE

62H85 SOUTH REGION

LINE NO.	LOCATION MAP	COUNTY	ROUTE	GUARDRAIL ID NUMBER	LOCATION DESCRIPTION	GUARDRAIL REMOVAL	TRAFFIC BAR TERM. TY. 1 (SP) TANGENT	TRAFFIC BAR TERM. TY. 2	SPB GR. TY. A 6FT POSTS	SPB GR. TY. A 9FT POSTS	STEEL POST, ATTACHED TO STRUCTURES	TERMINAL MARKER-DIRECT APPLIED	PAVED SHOULDER REMOVAL	TOPSOIL EXCAVATION AND PLACEMENT	TOPSOIL FURNISH AND PLACE, 4"	HOT-MIX ASPHALT SHOULDER 6"	AGGREGATE SHOULDER, TY B 10"	EARTH EXCAVATION	FURNISHED EXCAVATION
						(FOOT)	(EACH)	(EACH)	(FOOT)	(FOOT)	(EACH)	(EACH)	(SQ YD)	(CU YD)	(SQ YD)	(SQ YD)	(SQ YD)	(CU YD)	(CU YD)
UNDER CONSTRUCTION																			
1	3	COOK	IL-50	5	NB, RT, JUST N/O 159TH ST														
2	1	COOK	IL-50	9	NB, RT, JUST N/O 119TH ST	50	1					1	15			15			
3	1	COOK	IL-43	188	SB, RT, JUST S/O 95TH ST	50	1					1	15			15			
4	1	COOK	IL-83	242	NB, RT, 0.1 MILE S/O RIDGELAND AVE	50	1					1			15				
5	1	COOK	IL-83	328	SB, RT, 0.1 MILE S/O RIDGELAND AVE	50	1					1			15				
6	2	COOK	IL-171	485	NB, RT, JUST N/O RAVINE DR	50	1					1			15				
7	2	COOK	IL-7	545	SB, RT, JUST S/O 143RD ST	50	1				1	1					15		
8	1	COOK	IL-43	657	NB, RT, 0.2 MILE, N/O 99TH ST	50	1					1	15			15			
9	1	COOK	95TH ST	674	EB, RT, 0.1 MILE W/O IL-43	50	1					1					15		
10	3	COOK	US-30	3370	EB, RT, 0.1 MILE W/O RIDGELAND AVE	25	1					1	15			15			
11	3	COOK	IL-50	3598	NB, RT, JUST N/O FIELDCREST DR	50	1					1			15				
12	3	COOK	IL-50	3604	NB, RT, 0.3 MILE N/O FIELDCREST DR	50	1					1			15				
13	3	COOK	PULASKI RD	3664	NB, RT, 0.1 MILE N/O FLOSSMOOR RD	50	1					1					15		
14	3	COOK	US-30	3684	WB, RT, 0.1 MILE W/O CRAWFORD AVE	50	1					1	15			15			
15	3	COOK	US-30	3686	WB, RT, 0.2 MILE W/O CRAWFORD AVE	50	1					1	15			15			
16	4	COOK	WILLOW SPRINGS RD	3922	SB, RT, 0.4 MILE N/O 75TH ST	25		1									4		
17	4	WILL	IL-53	5105	NB, RT, 0.2 MILE N/O MATERIAL RD	50	1					1			15				
18	4	WILL	IL-53	5123	SB, RT, 0.2 MILE S/O TAYLOR RD	50	1					1							
19	4	WILL	IL-53	5129	SB, RT, 0.2 MILE S/O UNIVERSITY PKWY	50	1					1					15		
TOTAL COOK COUNTY						700	14	1	0.0	0.0	1	14	90	0	75	90	49		
TOTAL WILL COUNTY						150	3	0	0.0	0.0	0	3	0	0	15	0	15		

62H85 CENTRAL REGION

LINE NO.	LOCATION MAP	COUNTY	ROUTE	GUARDRAIL ID NUMBER	LOCATION DESCRIPTION	GUARDRAIL REMOVAL	TRAFFIC BAR TERM. TY. 1 (SP) TANGENT	TRAFFIC BAR TERM. TY. 2	SPB GR. TY. A 6FT POSTS	SPB GR. TY. A 9FT POSTS	STEEL POST, ATTACHED TO STRUCTURES	TERMINAL MARKER-DIRECT APPLIED	PAVED SHOULDER REMOVAL	TOPSOIL EXCAVATION AND PLACEMENT	TOPSOIL FURNISH AND PLACE, 4"	HOT-MIX ASPHALT SHOULDER 6"	AGGREGATE SHOULDER, TY B 10"	EARTH EXCAVATION	FURNISHED EXCAVATION
						(FOOT)	(EACH)	(EACH)	(FOOT)	(FOOT)	(EACH)	(EACH)	(SQ YD)	(CU YD)	(SQ YD)	(SQ YD)	(SQ YD)	(CU YD)	(CU YD)
1	6	DUPAGE	IL-38	5462	WB, RT, 0.2 MILE E/O IL-59 (OVER CREEK)	100	1		50.0			1					31		
2	6	DUPAGE	IL-38	5468	EB, RT, JUST E/O TOWN RD	50	1					1					15		
3	9	DUPAGE	IL-56	5496	EB, RT, JUST E/O EAST LOOP RD	50	1					1					15		
4	5	DUPAGE	IL-53	5504	SB, RT, JUST S/O PARK BLVD	50	1					1					15		
5	5	DUPAGE	IL-53	5505	SB, LT, 0.2 MILE S/O PARK BLVD (OVER GINKGO WAY)	50	1					1	15			15			
6	5	DUPAGE	IL-53	5507	NB, LT, 0.2 MILE S/O PARK BLVD (OVER GINKGO WAY)	50	1					1	15			15			
7	5	DUPAGE	IL-53	5509	NB, LT, JUST S/O PARK BLVD (OVER RIVER)	50	1					1	15			15			
8	5	DUPAGE	IL-53	5510	SB, RT, 0.2 MILE S/O PARK BLVD (OVER GINKGO WAY)	25	1					1			15				
9	5	DUPAGE	IL-53	5521	NB, RT, 0.3 MILE S/O PARK BLVD (OVER GINKGO WAY)	37.5	1					1			15				
10	5	DUPAGE	IL-53	5523	NB, RT, 0.1 MILE S/O PARK BLVD (OVER RIVER)	50	1					1					15		
11	6	DUPAGE	IL-59	5556	SB, RT, 0.2 MILE N/O FERRY RD	50	1					1					15		
12	6	DUPAGE	IL-59	5566	NB, RT, 0.2 MILE N/O FERRY RD	50	1					1					15		
13	6	DUPAGE	IL-59	5568	NB, RT, JUST S/O CONTINENTAL DR	50	1				5	1					15		
14	8	DUPAGE	IL-53	5617	SB, RT, 0.1 MILE S/O SUMMERHILL RD	50	1					1	15			15			
15	8	DUPAGE	IL-53	5618	SB, RT, 0.1 MILE S/O SEVEN BRIDGES DR	50	1					1	15			15			
16	8	DUPAGE	IL-53	5622	SB, RT, 0.1 MILE S/O HOBSON RD	50	1					1	15			15			
17	8	DUPAGE	IL-53	5626	SB, RT, 0.3 MILE N/O 75TH ST	50	1					1	15			15			
18	8	DUPAGE	IL-53	5630	SB, RT, 0.2 MILE S/O 75TH ST	50	1					1	15			15			
19	8	DUPAGE	IL-53	5634	NB, RT, 0.1 MILE N/O 75TH ST	50	1					1	15			15			
20	8	DUPAGE	IL-53	5636	NB, RT, 0.2 MILE N/O 75TH ST	50	1					1	15			15			
21	8	DUPAGE	IL-53	5638	NB, RT, 0.3 MILE N/O 75TH ST	50	1					1	15			15			
22	8	DUPAGE	IL-53	5645	NB, RT, JUST S/O WOODRIDGE DR	50	1					1	15			15			
23	8	DUPAGE	IL-53	5647	NB, RT, 0.1 MILE N/O WOODRIDGE DR	50	1				6	1	15			15			
24	9	DUPAGE	IL-38	7249	WB, RT, 0.1 MILE W/O I-355	50	1					1			15				
25	9	DUPAGE	IL-38	7251	EB, RT, JUST W/O BAKER HILL DR	37.5	1					1			15				
26	9	DUPAGE	IL-56	7262	EB, RT, 0.25 MILE E/O IL-53	50	1					1					15		
27	9	DUPAGE	IL-31	7264	EB, RT, 0.25 MILE W/O MEYER RD	50	1					1			15				
TOTAL DUPAGE COUNTY						1350	27	0	50.0	0.0	11	27	195	0	75	195	151		

NEW GUARDRAIL

7	COOK	123RD ST	1	SEE PLAN	37.5	1			75.0	87.5		1			37		151	27	
7	COOK	KEAN AVE	2	SEE PLAN	51.5	2				162.5		2			46		456		7
TOTAL COOK COUNTY (GUARDRAIL REPLACEMENT AND NEW GUARDRAIL)						789	17	1	75.0	250.0	1	17	90	83	75	546	200	27	7
GRAND TOTAL						2289	47	1	125.0	250.0	12	47	285	83	165	741	366	27	7

**STATE OF ILLINOIS
DEPARTMENT OF TRANSPORTATION**

**GUARDRAIL REPLACEMENT (SOUTH AND CENTRAL SECTION)
SCHEDULE OF QUANTITIES**



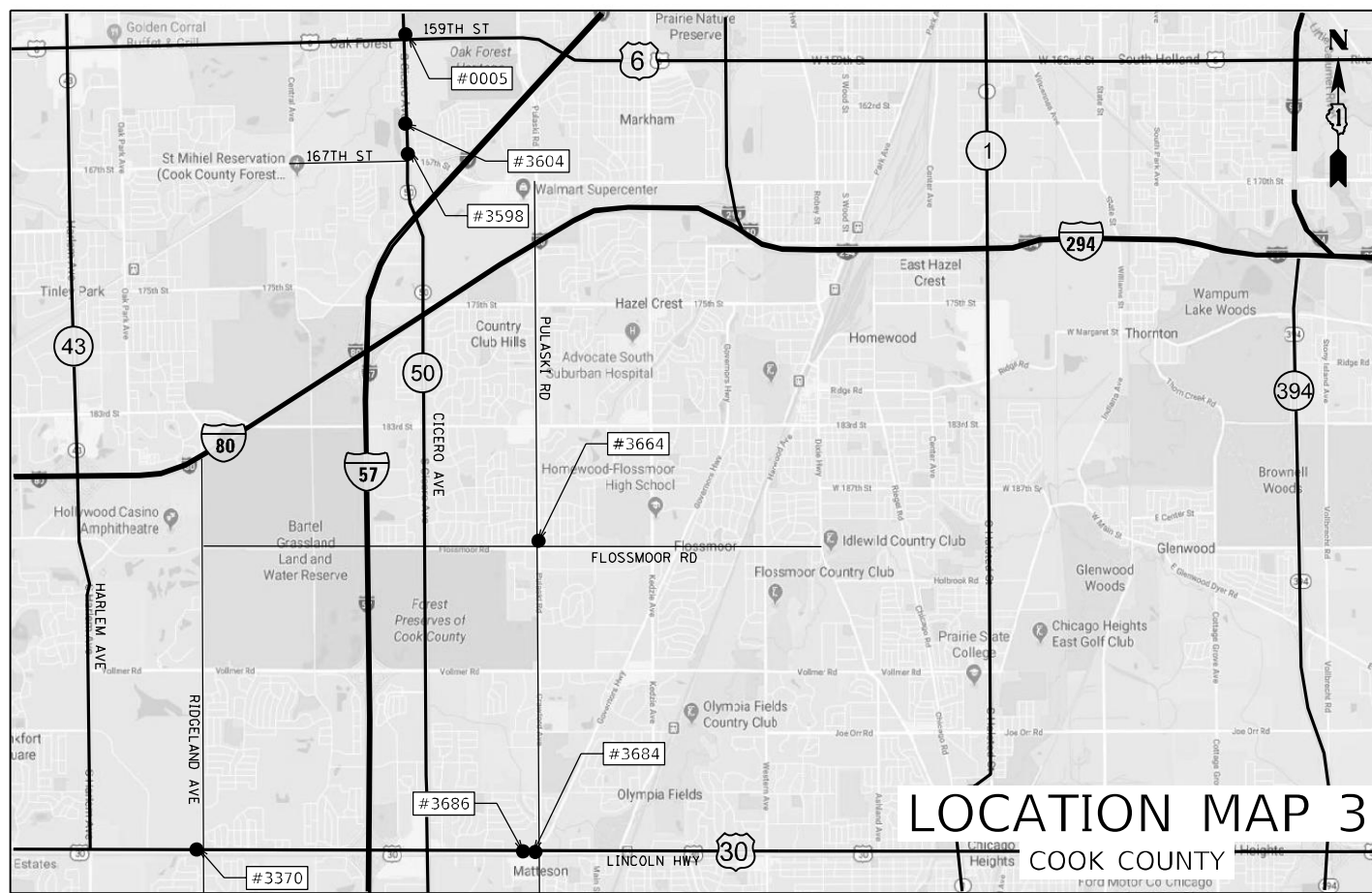
USER NAME = jpham	DESIGNED - TN	REVISED -
PLOT SCALE = 2.0000" = 1'	DRAWN - JP	REVISED -
PLOT DATE = 12/10/2019	CHECKED - TN	REVISED -
	DATE - 12/10/2019	REVISED -



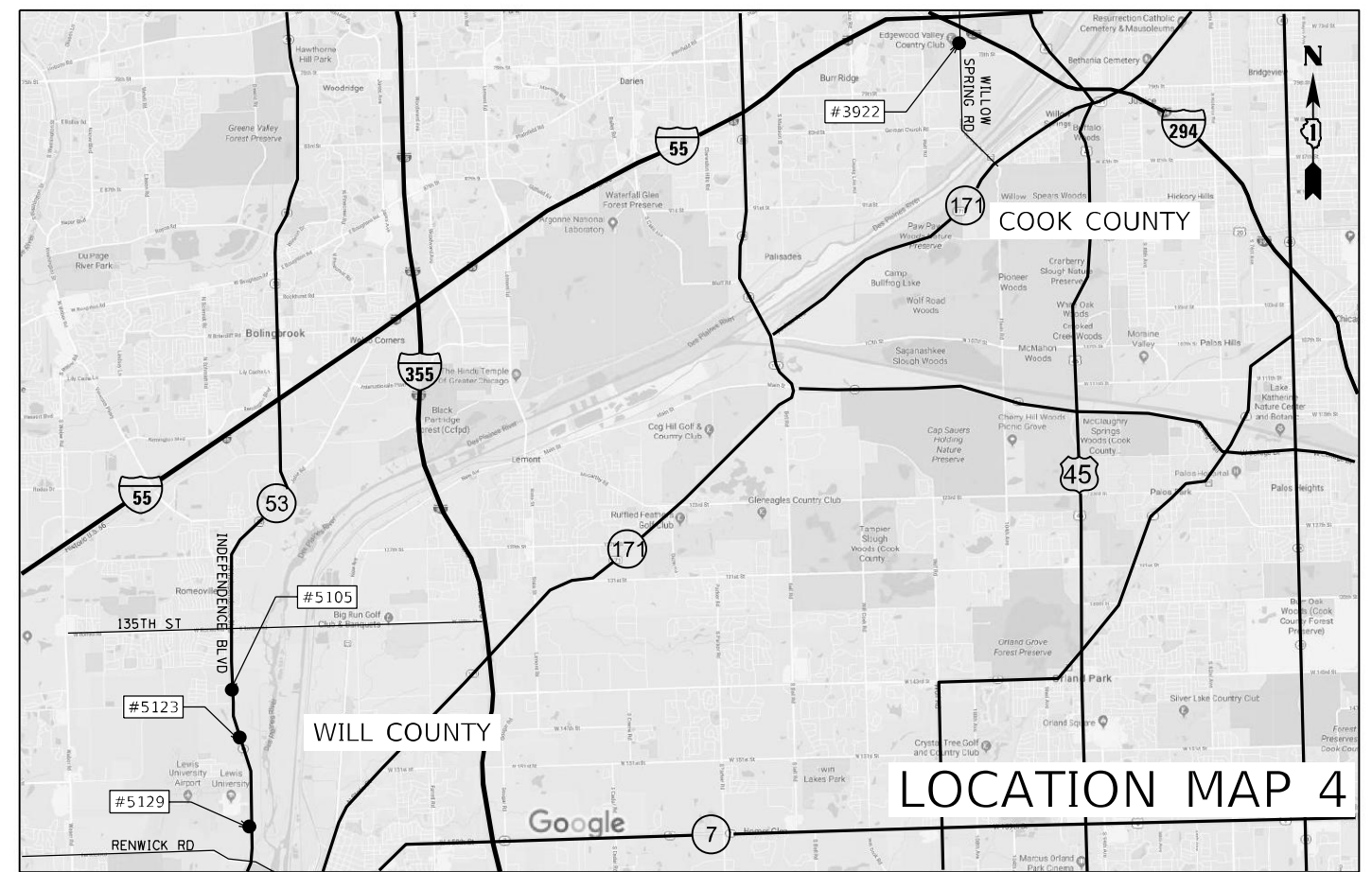
LOCATION MAP 1
COOK COUNTY



LOCATION MAP 2
COOK COUNTY



LOCATION MAP 3
COOK COUNTY



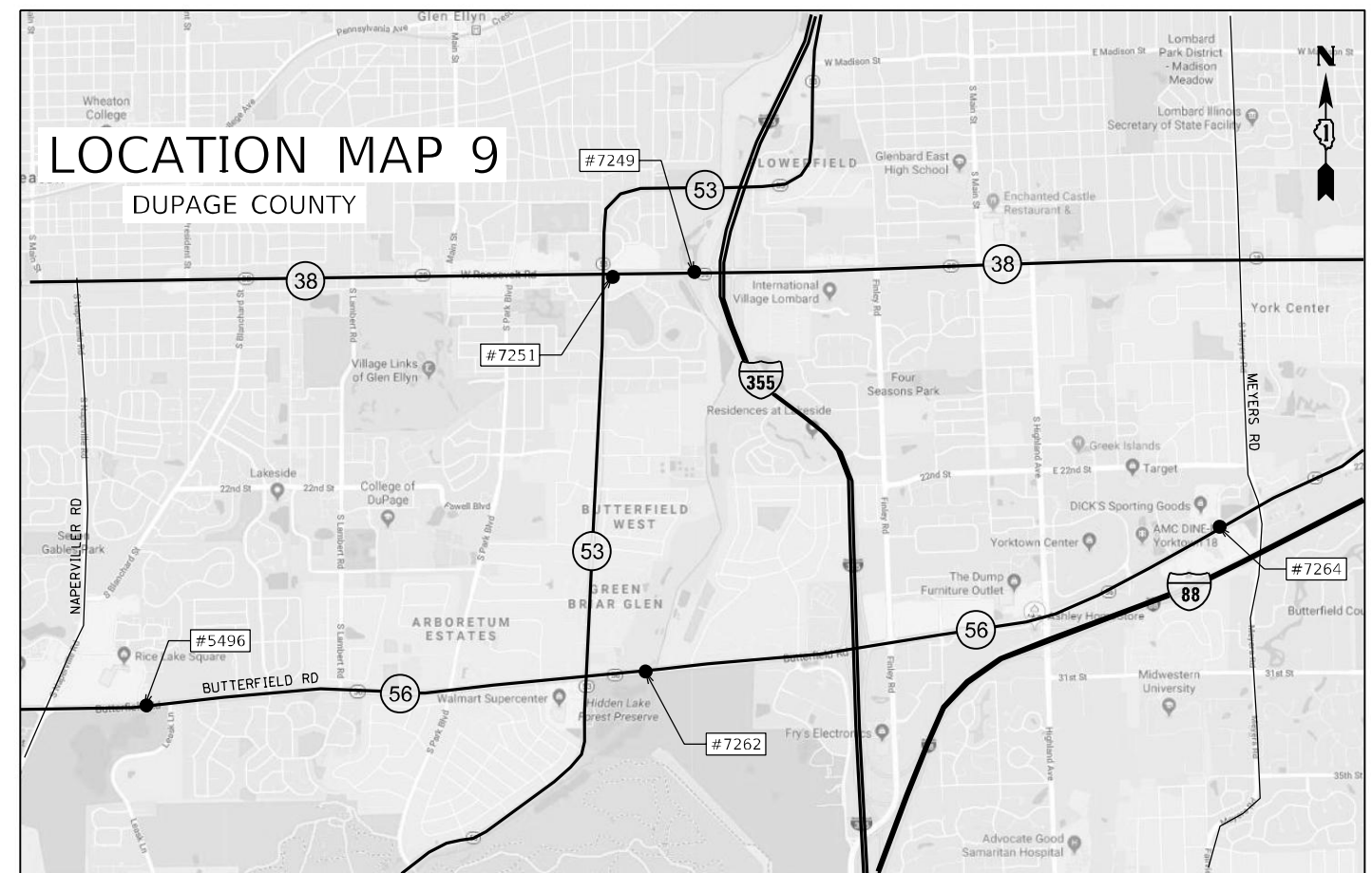
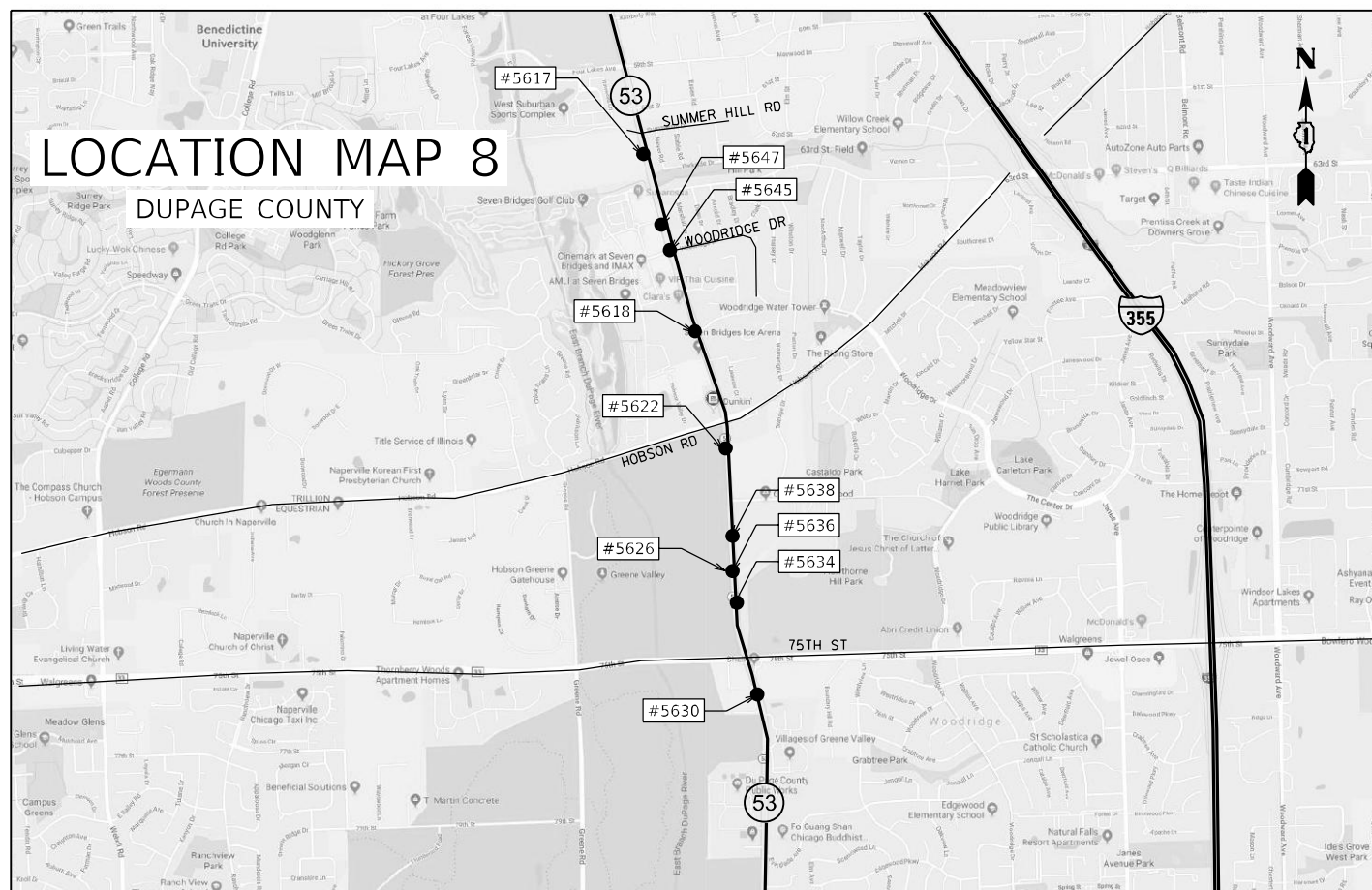
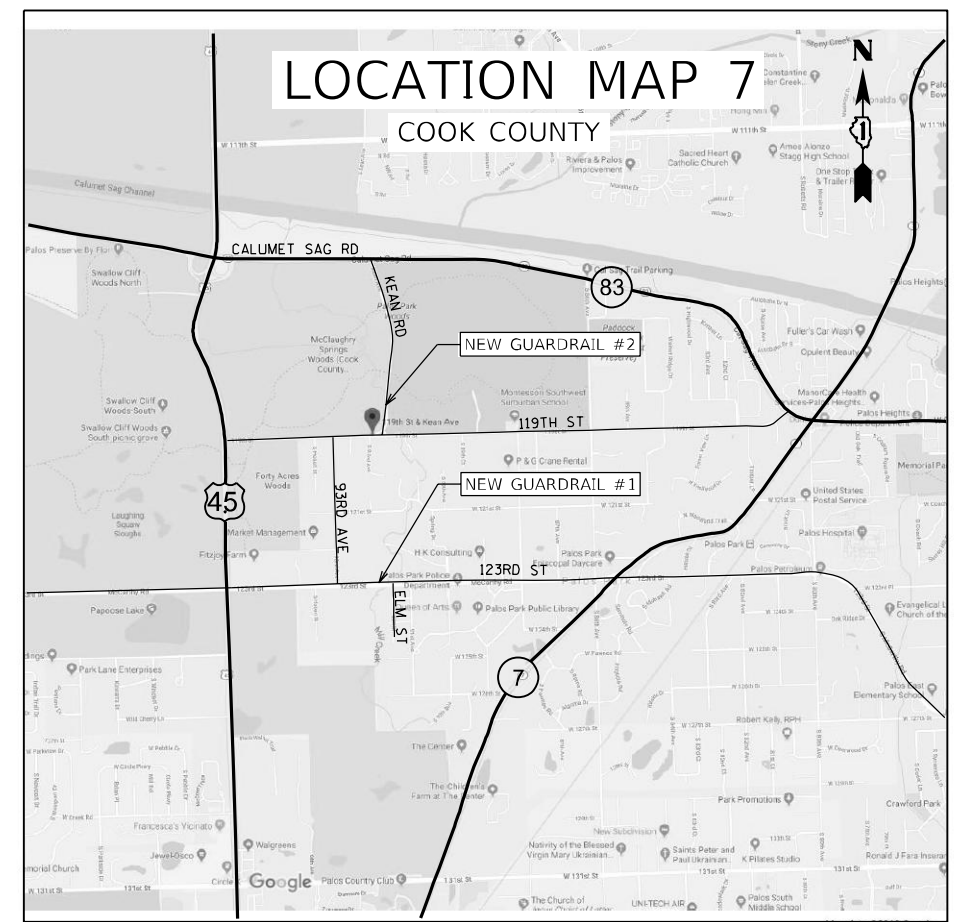
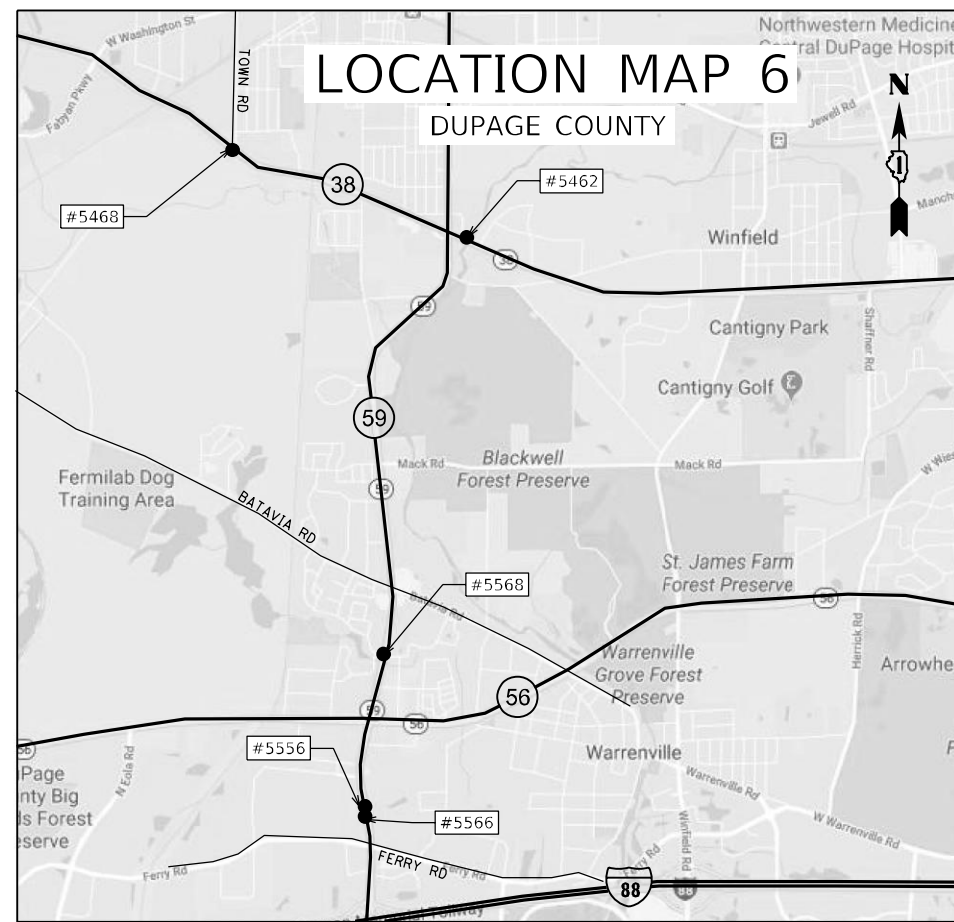
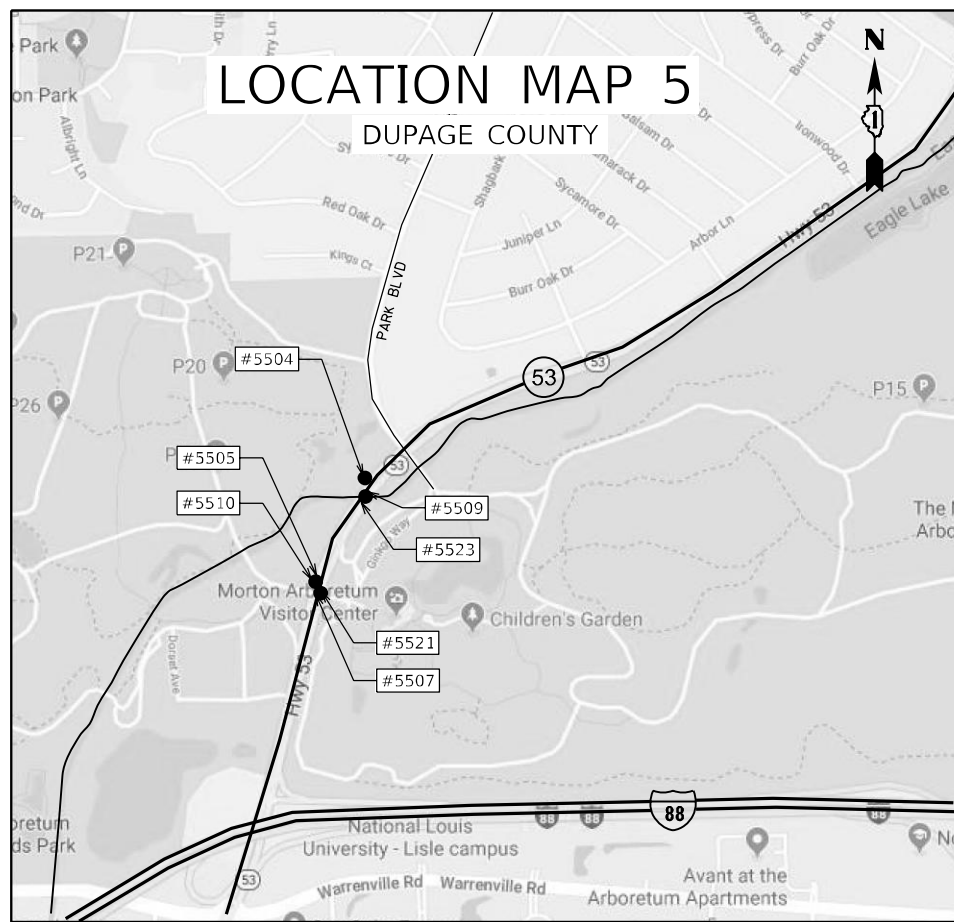
LOCATION MAP 4
COOK COUNTY
WILL COUNTY



USER NAME = mkochlcr	DESIGNED - TN	REVISED -
PLOT SCALE = 2,0000' / in.	DRAWN - JP	REVISED -
PLOT DATE = 12/6/2019	CHECKED - TN	REVISED -
	DATE - 12/6/2019	REVISED -

**STATE OF ILLINOIS
DEPARTMENT OF TRANSPORTATION**

LOCATION MAP (SOUTH REGION)		MAP-01	
F.A. RTE.	SECTION	COUNTY	TOTAL SHEETS
VAR.	2019-004-I	VARIOUS	21
SCALE: N/A		CONTRACT NO. 62H85	
SHEET NO. 1 OF 2 SHEETS STA. TO STA.		FED. ROAD DIST. NO. 1 ILLINOIS FED. AID PROJECT	

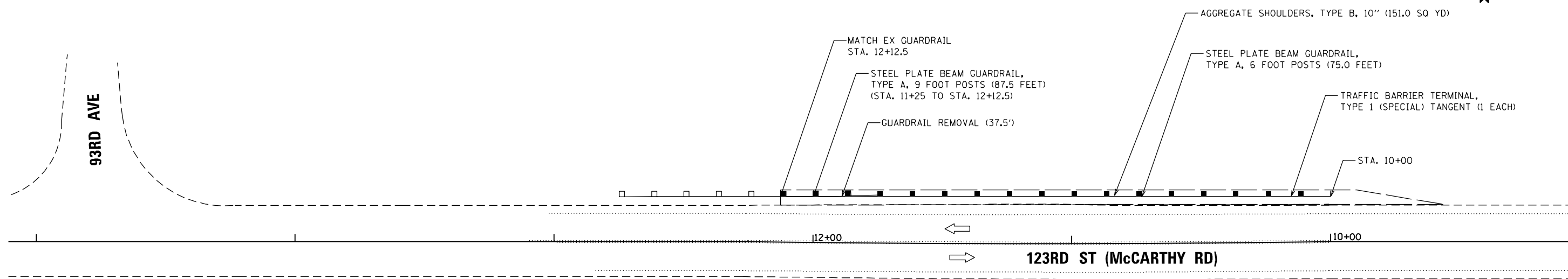


USER NAME = mkochlcr	DESIGNED - TN	REVISED -
	DRAWN - JP	REVISED -
PLOT SCALE = 2,0000' / in.	CHECKED - TN	REVISED -
PLOT DATE = 12/6/2019	DATE - 12/6/2019	REVISED -

STATE OF ILLINOIS
DEPARTMENT OF TRANSPORTATION

LOCATION MAP (CENTRAL REGION)

SCALE: N/A	SHEET NO. 2 OF 2 SHEETS	STA. TO STA.	F.A. RTE.	SECTION	COUNTY	TOTAL SHEETS	SHEET NO.
			VAR.	2019-004-I	VARIOUS	21	7
			FED. ROAD DIST. NO. 1		ILLINOIS FED. AID PROJECT		
			CONTRACT NO. 62H85				



USER NAME = mkochlcr	DESIGNED - TN	REVISED -
	DRAWN - JP	REVISED -
PLOT SCALE = 40,000' / in.	CHECKED - TN	REVISED -
PLOT DATE = 12/9/2019	DATE - 12/9/2019	REVISED -

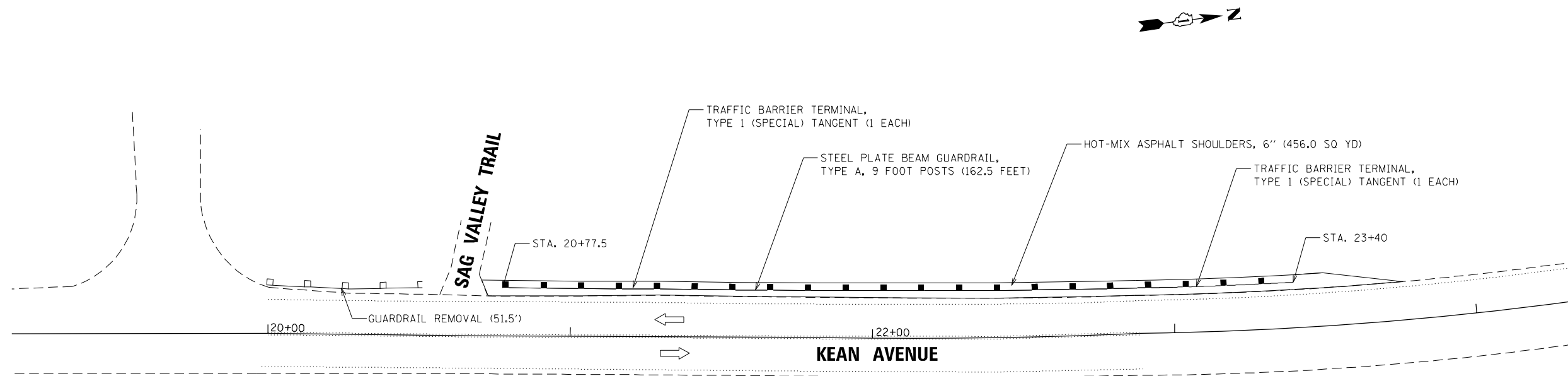
**STATE OF ILLINOIS
DEPARTMENT OF TRANSPORTATION**

**123RD ST (McCARTHY RD)
GUARDRAIL PLAN (LOCATION 1)**

SCALE: 1"=20'	SHEET NO. 1 OF 2 SHEETS	STA. . TO STA. .
---------------	-------------------------	------------------

F.A. RTE.	SECTION	COUNTY	TOTAL SHEETS	SHEET NO.
VAR.	2019-004-I	COOK	21	8
FED. ROAD DIST. NO. 1 ILLINOIS FED. AID PROJECT			CONTRACT NO. 62H85	

P:\2019\ME19003.Var\PHI\W010_62H85_62H86 Guardrail Replacements\01-CADD\02-Shts\62H85\0162H85-sht-Plan-Loc1.dgn



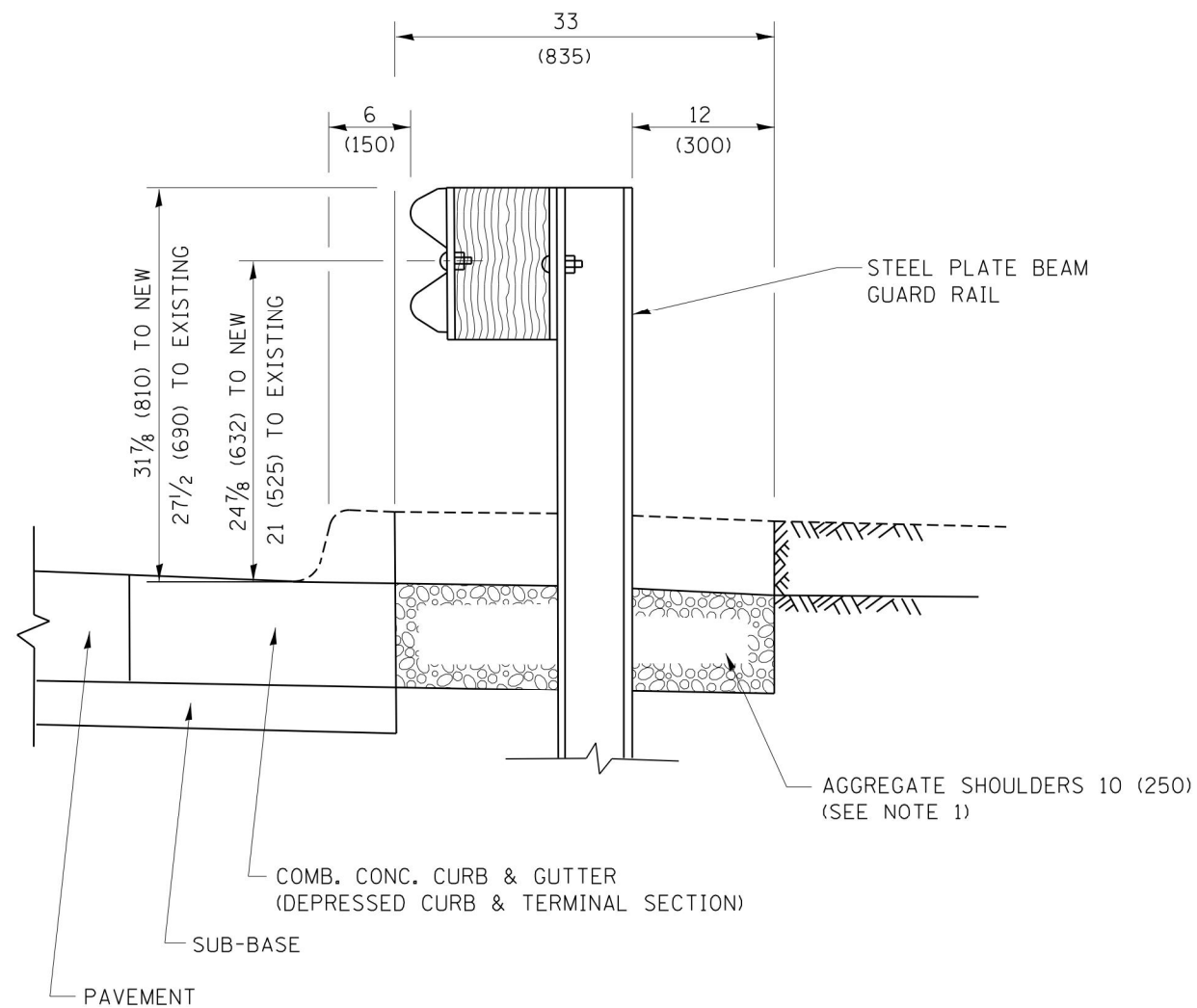
USER NAME = mkochlcr	DESIGNED - TN	REVISED -
	DRAWN - JP	REVISED -
PLOT SCALE = 40,000' / in.	CHECKED - TN	REVISED -
PLOT DATE = 12/9/2019	DATE - 12/9/2019	REVISED -

**STATE OF ILLINOIS
DEPARTMENT OF TRANSPORTATION**

**KEAN AVENUE
GUARDRAIL PLAN (LOCATION 2)**

SCALE: 1"=20'	SHEET NO. 2 OF 2 SHEETS	STA. TO STA.
---------------	-------------------------	------------------------------

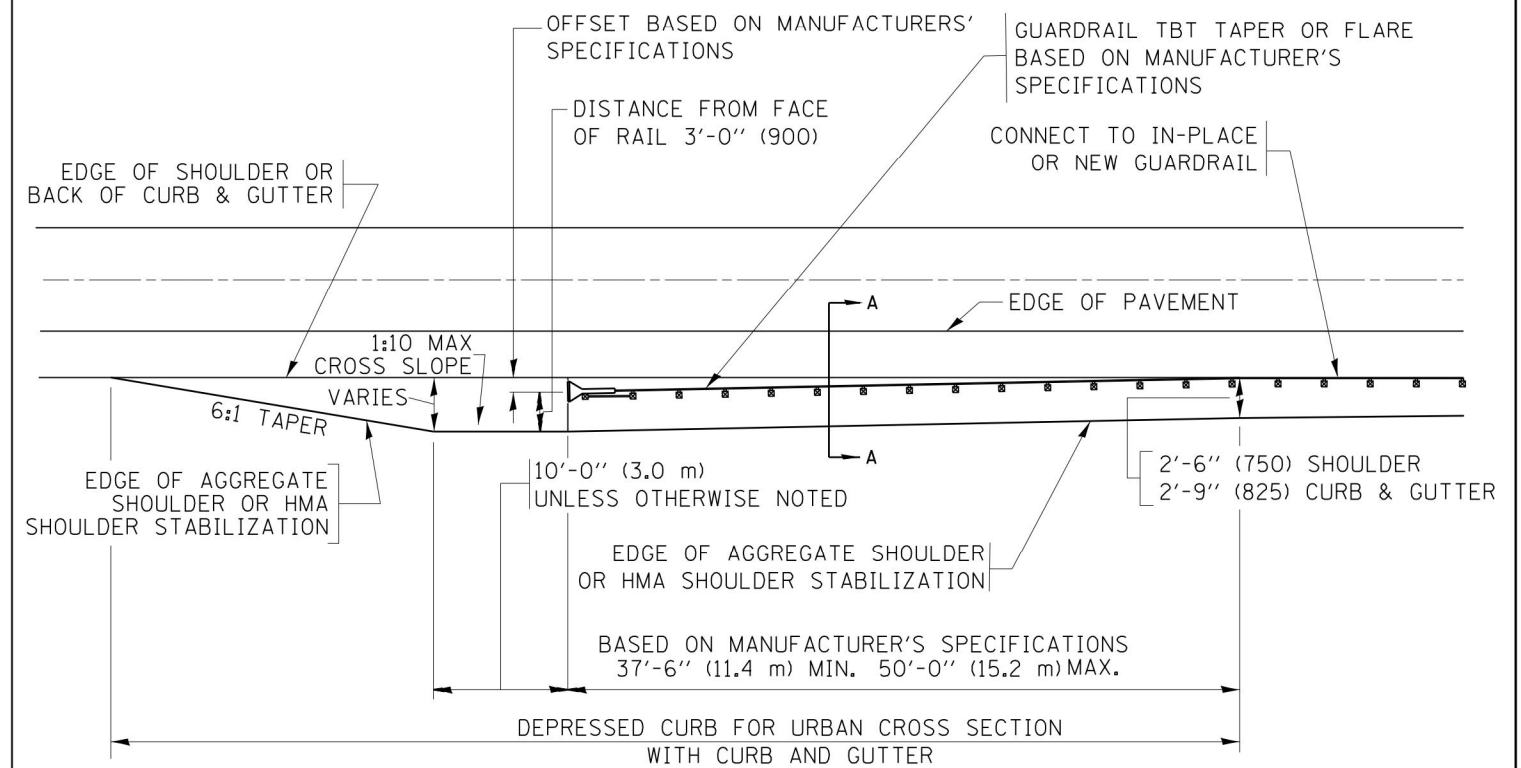
F.A. RTE.	SECTION	COUNTY	TOTAL SHEETS	SHEET NO.
VAR.	2019-004-I	COOK	21	9
FED. ROAD DIST. NO. 1 ILLINOIS FED. AID PROJECT			CONTRACT NO. 62H85	



SECTION A-A

- NOTES:
1. THE AGGREGATE SHOULDER, 10 (250) OR HMA SHOULDER, 6 (150) (IF REQUIRED) SHALL EXTEND UNDER THE TRAFFIC BARRIER TERMINAL.
 2. "EXISTING" GUARDRAIL REFERS TO CONNECTING TERMINAL SECTION TO GUARD RAILING PRIOR TO THE MIDWEST GUARDRAIL SYSTEM.
 3. THE CONTRACTOR SHALL VERIFY THE TYPE/HEIGHT OF GUARDRAIL IN-PLACE BEFORE ORDERING THE NEW TERMINAL SECTION. COST INCLUDED WITH THE COST OF THE TERMINAL. THE TERMINAL SECTION HEIGHT TO BE PLACED MUST MATCH THE HEIGHT OF THE IN-PLACE GUARDRAIL.

**DETAILS FOR STEEL PLATE BEAM
GUARD RAIL ADJACENT TO CURB AND GUTTER
[FOR ROADWAY SPEED 35 MPH (60 kmh) TO 45 MPH (70 kmh)]**



**DEPRESSED CURB AND GUTTER AND
SHOULDER TREATMENT AT TBT TY. 1 SPL.**

AGGREGATE SHOULDER, 10 (250) WILL BE PAID ACCORDING TO SECTION 481.

HMA SHOULDERS 6 (150) (IF REQUIRED) WILL BE PAID ACCORDING TO SECTION 482.

COMB. CONC. C&G, STEEL PLATE BEAM GUARD RAIL AND TRAFFIC BARRIER TERMINAL, OF THE TYPE SPECIFIED WILL BE PAID FOR SEPARATELY.

TBT = TRAFFIC BARRIER TERMINAL
ALL DIMENSIONS ARE IN INCHES (MILLIMETERS)
UNLESS OTHERWISE SHOWN.

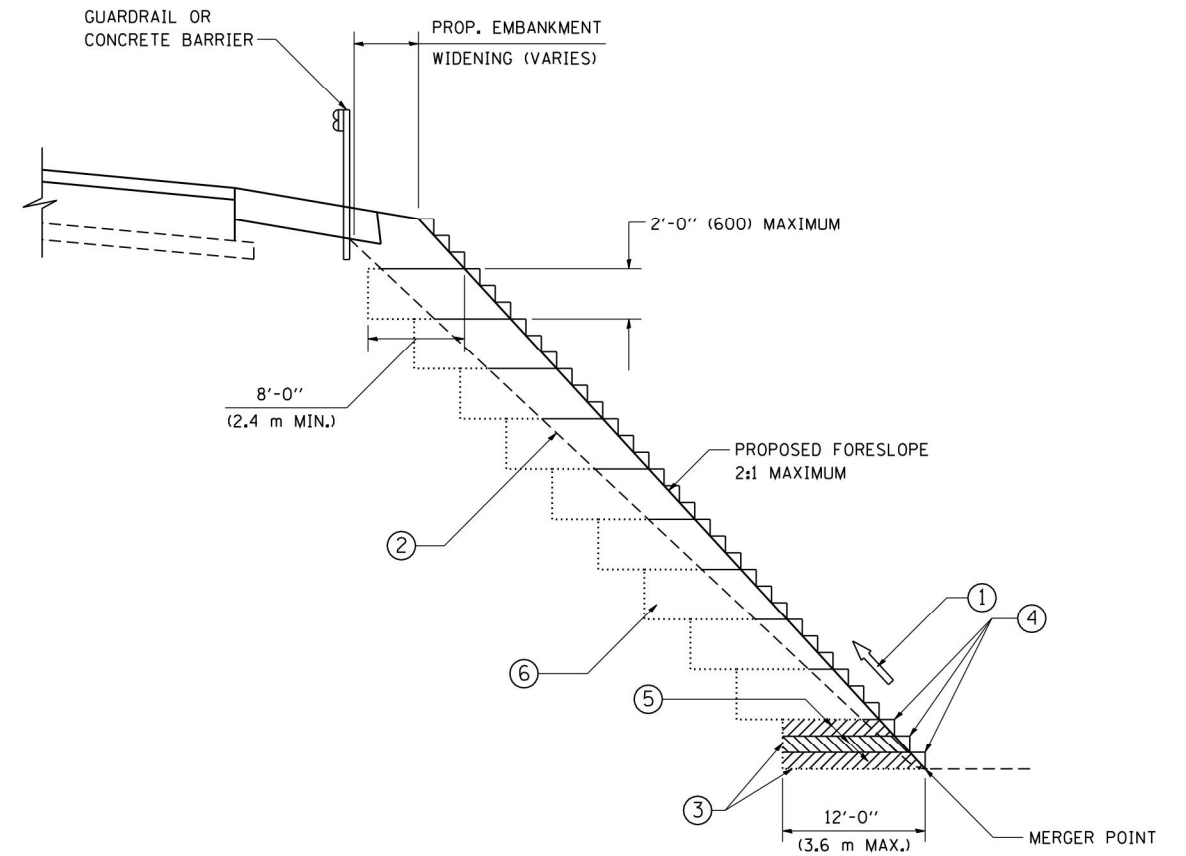
FILE NAME =	USER NAME = drivakosgn	DESIGNED - M. DE YONG	REVISED - R. BORO 12-08-2008
pw\l\084EBIDINTEG\illinois.gov\PIWIDOT\Documents\IDOT Offices\District 1\Projects\Dist 1\Projects\CADData\CADsheets\bd34.dgn		DRAWN	REVISED - R. BORO 09-14-2009
	PLOT SCALE = 50.0000' / 1" / in.	CHECKED -	REVISED - R. BORO 08-06-2012
Default	PLOT DATE = 12/21/2015	DATE - 09-22-90	REVISED - R. BORO 05-08-2015

**STATE OF ILLINOIS
DEPARTMENT OF TRANSPORTATION**

**DETAILS FOR DEPRESSED CURB & GUTTER AND
SHOULDER TREATMENT AT TBT TY. 1 SPL.**

SCALE: NONE SHEET 1 OF 1 SHEETS STA. TO STA.

F.A. RTE.	SECTION	COUNTY	TOTAL SHEETS	SHEET NO.
VAR.	2019-004-I	VARIOUS	21	10
BD600-10 (BD 34)			CONTRACT NO. 62H85	
ILLINOIS FED. AID PROJECT				



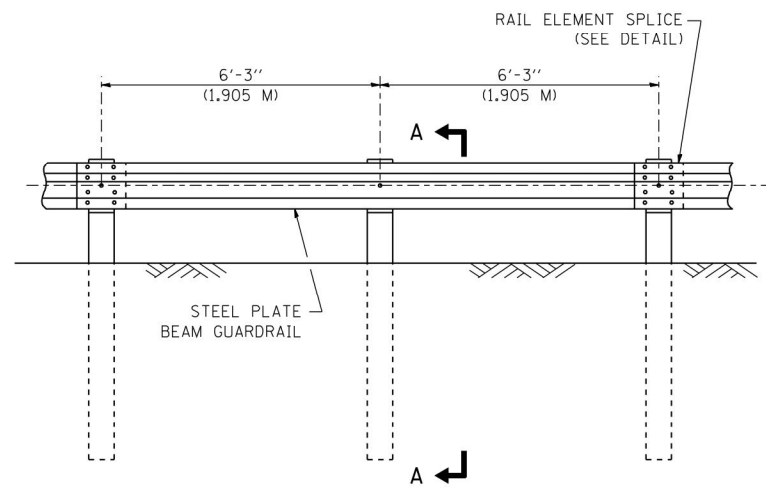
TYPICAL BENCHING DETAIL
FOR EMBANKMENT

NOTES:

- ① CONSTRUCT SUCCEEDING BENCH CUTS AND EMBANKMENT PLACEMENT AND COMPACTION FROM BOTTOM TO TOP IN STAIRSTEP FASHION.
- ② EXISTING FORESLOPE PREPARED IN ACCORDANCE WITH ARTICLE 205.03 OF THE STANDARD SPECIFICATIONS.
- ③ BENCH CUT EXISTING SLOPE TYPICAL FOR EACH STEP.
- ④ TRIM TO FINAL SLOPE.
- ⑤ EQUAL 8-INCH (200) LIFTS OF EMBANKMENT COMPACTED IN ACCORDANCE WITH ARTICLE 205.05 OF THE STANDARD SPECIFICATIONS.
- ⑥ EXCAVATION OF BENCH CUTS WITHIN EXISTING EMBANKMENT WILL BE PAID FOR AT THE CONTRACT UNIT PRICE PER CUBIC METER OR CUBIC YARD FOR "EARTH EXCAVATION". THIS PRICE WILL INCLUDE ALL LABOR AND MATERIAL, NO ADDITIONAL COMPENSATION WILL BE ALLOWED.
- ⑦ SLOPES SHALL BE BENCHED ACCORDING TO THIS DETAIL WHEN THE SLOPE IS STEEPER THAN 4:1 AND THE HEIGHT IS GREATER THAN 5' (1.5 m).

ALL DIMENSIONS ARE IN INCHES (MILLIMETERS) UNLESS OTHERWISE SHOWN.

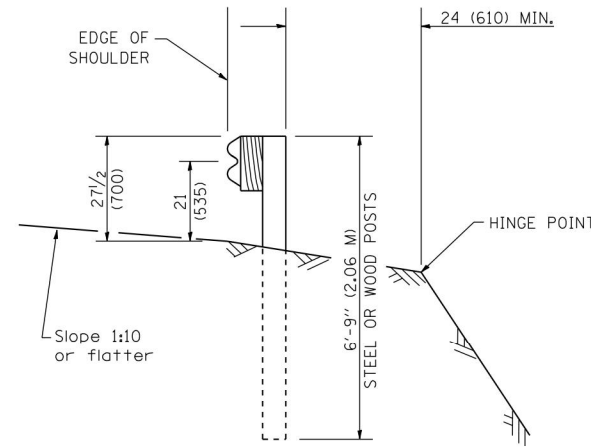
FILE NAME = W:\diststd\22x34\bd51.dgn	USER NAME = gegl1enobt	DESIGNED -	REVISED -	STATE OF ILLINOIS DEPARTMENT OF TRANSPORTATION	BENCHING DETAIL FOR EMBANKMENT WIDENING		F.A. RTE.	SECTION	COUNTY	TOTAL SHEETS	SHEET NO.
	PLOT SCALE = 50.0000' / IN.	DRAWN - CADD	REVISED -		SCALE: NONE	SHEET NO. 1 OF 1 SHEETS	STA.	TO STA.	VAR.	2019-004-1	VARIOUS
PLOT DATE = 1/4/2008	DATE - 06-16-04	CHECKED - S.E.B.	REVISED -					BD-51		CONTRACT NO. 62H85	
		DATE - 06-16-04	REVISED -					FED. ROAD DIST. NO. 1 ILLINOIS FED. AID PROJECT			



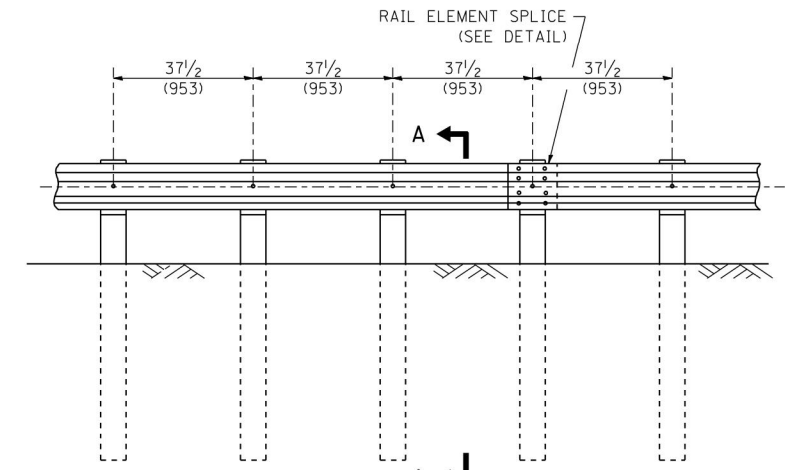
ELEVATION

TYPE A

6'-3" (1.905 M) TYPICAL POST SPACING



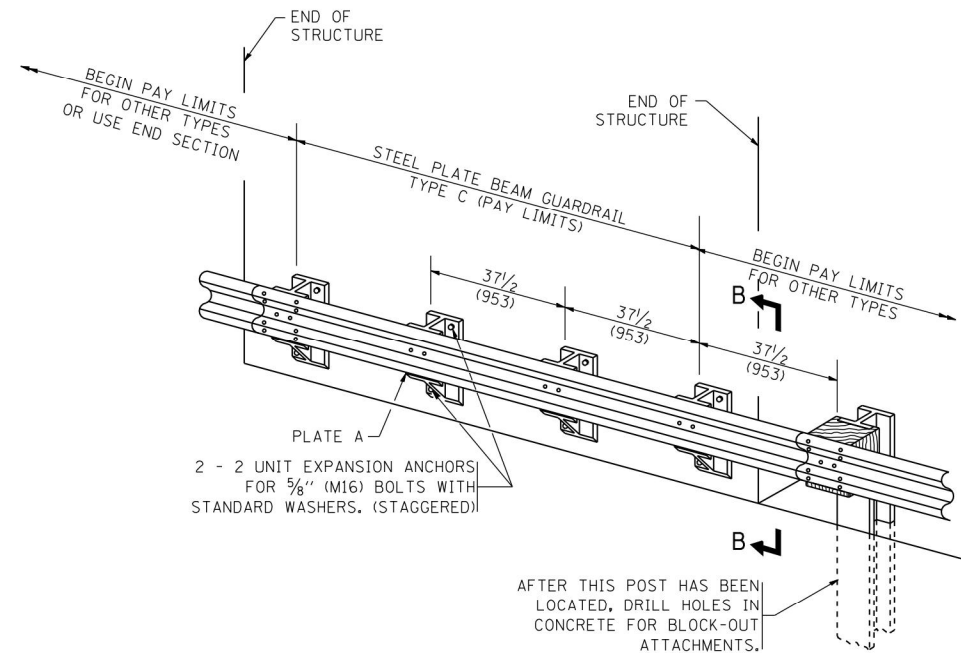
SECTION A-A



ELEVATION

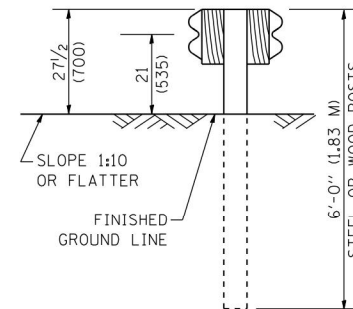
TYPE A

37 1/2 (953) CLOSED POST SPACING

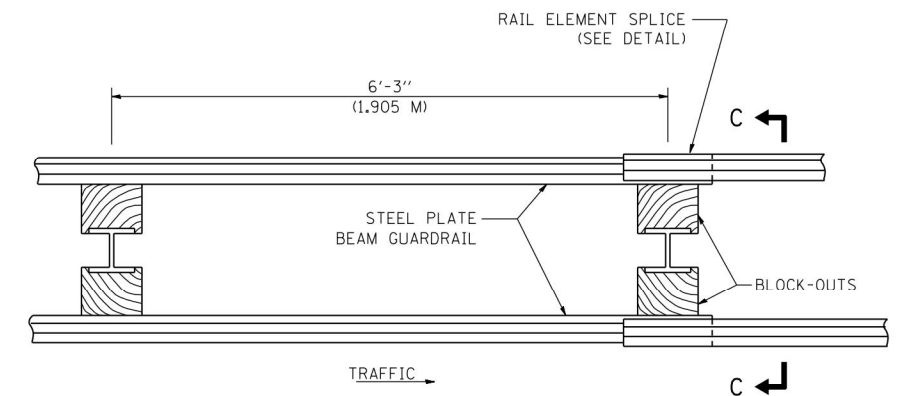


TYPE C

37 1/2 (953) BLOCK-OUT SPACING



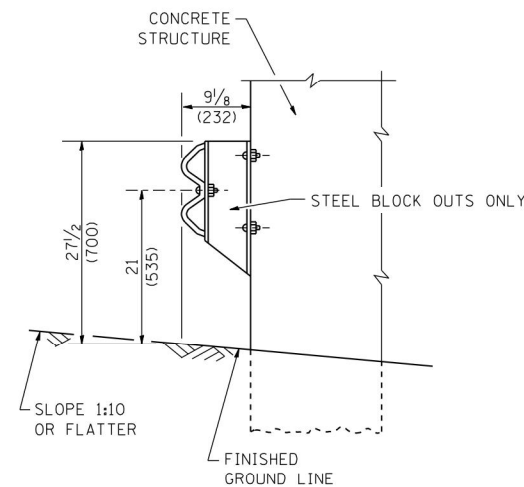
SECTION C-C



PLAN

TYPE D

DOUBLE STEEL PLATE BEAM GUARDRAIL
6'-3" (1.905 M) TYPICAL POST SPACING



SECTION B-B

GENERAL NOTES

ALL SLOPE RATIOS ARE EXPRESSED AS UNITS OF VERTICAL DISPLACEMENT TO UNITS OF HORIZONTAL DISPLACEMENT (V:H).

ALL DIMENSIONS ARE IN INCHES (MILLIMETERS) UNLESS OTHERWISE SHOWN.

THE EXISTING STEEL POSTS MAY BE DRILLED TO MATCH THE BOLT PATTERN SHOWN HEREIN FOR THE WOOD BLOCK-OUT, OR A NEW STEEL POST SHALL BE PROVIDED.

THIS DETAIL IS APPLICABLE TO THE GUARDRAIL SYSTEM USED PRIOR TO JANUARY 1, 2007. FOR DETAILS ON THE MIDWEST GUARDRAIL SYSTEM, SEE STANDARD 630001.

FILE NAME = W:\diststd\22x34\bm21.dgn

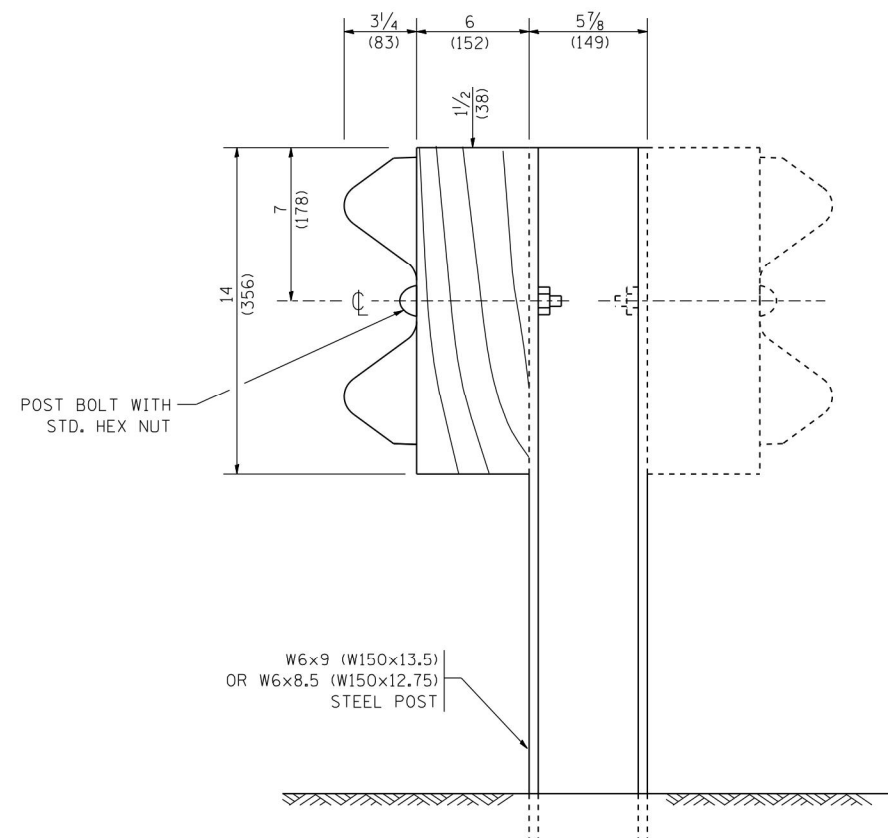
USER NAME = gaglionobt
PLOT SCALE = 50.0000' / IN.
PLOT DATE = 1/4/2008

DESIGNED -
DRAWN -
CHECKED -
DATE -
REVISED - 10-31-06
REVISED -
REVISED -
REVISED -

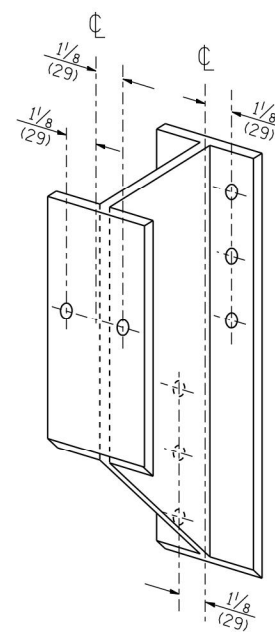
**STATE OF ILLINOIS
DEPARTMENT OF TRANSPORTATION**

**REMOVE AND REERECT
STEEL PLATE BEAM GUARDRAIL**
SCALE: NONE SHEET NO. 1 OF 4 SHEETS STA. TO STA.

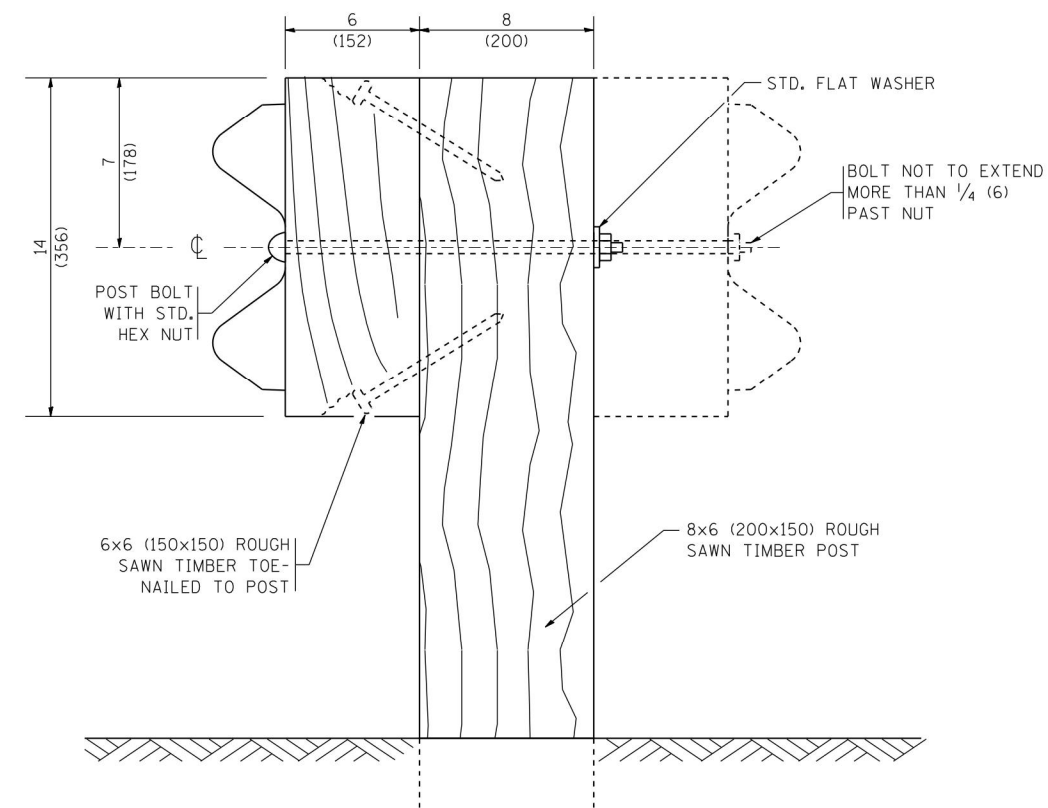
F.A.P. RTE.	SECTION	COUNTY	TOTAL SHEETS	SHEET NO.
VAR.	2019-004-I	VARIOUS	21	12
BM-21			CONTRACT NO. 62H85	
FED. ROAD DIST. NO. 1 ILLINOIS FED. AID PROJECT				



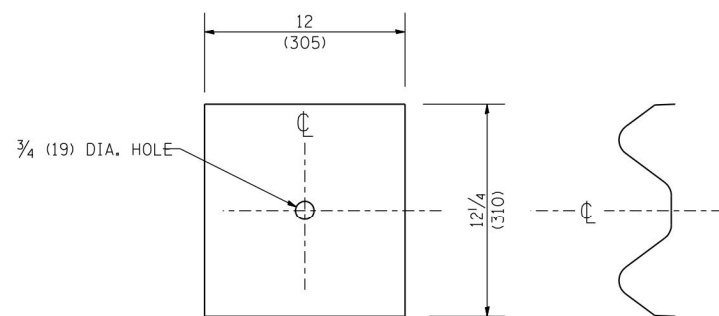
STEEL POST CONSTRUCTION



STEEL BLOCK-OUT DETAIL



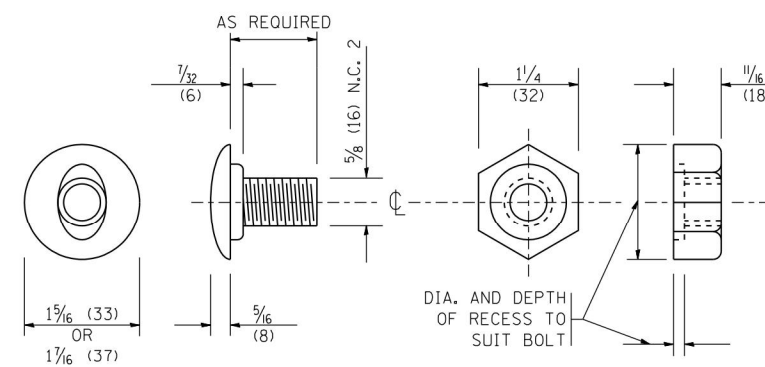
WOOD POST CONSTRUCTION



NOTE:

PLATE A SHALL BE PLACED BETWEEN RAIL ELEMENT AND BLOCK-OUT AT NON-SPLICE MOUNTING POINTS ONLY WHEN STEEL BLOCK-OUTS ARE USED.

PLATE A



POST OR SPLICE BOLT & NUT

FILE NAME = W:\diststd\22x34\bm21.dgn

USER NAME = gegl@nabt
 PLOT SCALE = 50.0000' / IN.
 PLOT DATE = 1/4/2008

DESIGNED -
 DRAWN -
 CHECKED -
 DATE -

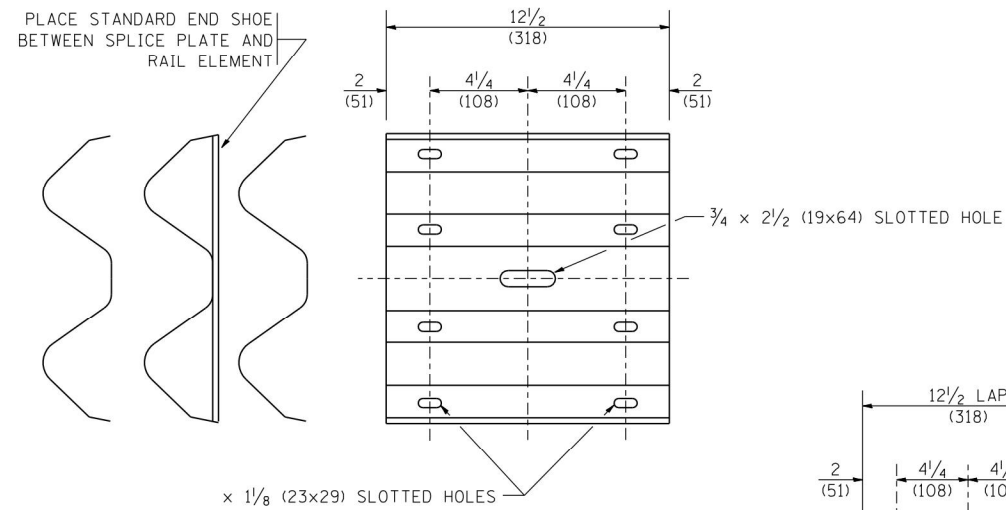
REVISED - 10-31-06
 REVISED -
 REVISED -
 REVISED -

STATE OF ILLINOIS
 DEPARTMENT OF TRANSPORTATION

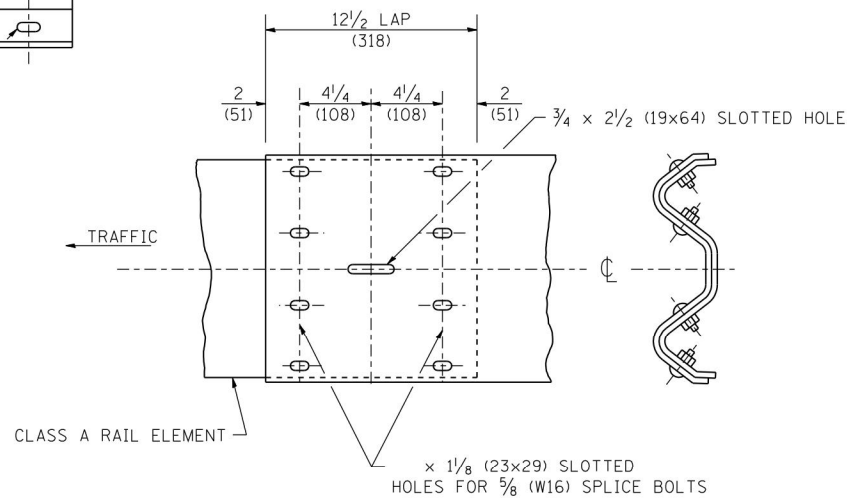
REMOVE AND REERECT
 STEEL PLATE BEAM GUARDRAIL

SCALE: NONE SHEET NO. 2 OF 4 SHEETS STA. TO STA.

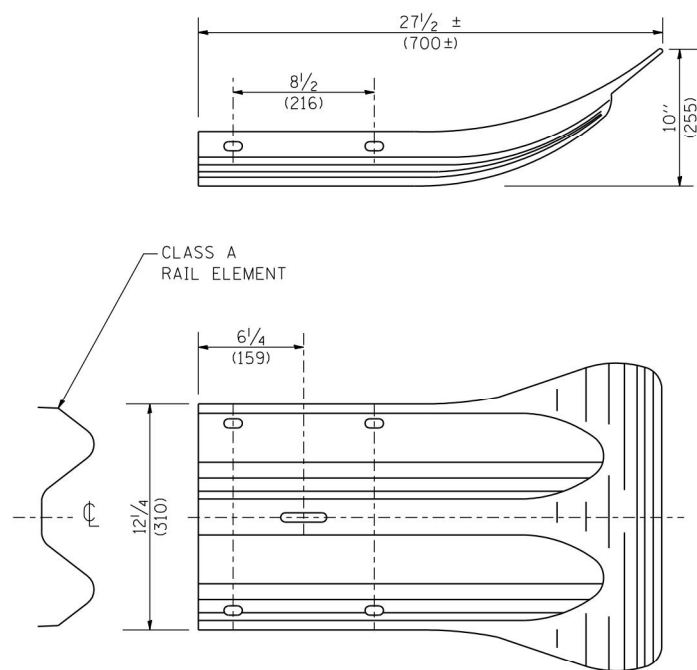
F.A.P. RTE.	SECTION	COUNTY	TOTAL SHEETS	SHEET NO.
VAR.	2019-004-1	VARIOUS	21	13
BM-21			CONTRACT NO. 62H85	
FED. ROAD DIST. NO. 1 ILLINOIS FED. AID PROJECT				



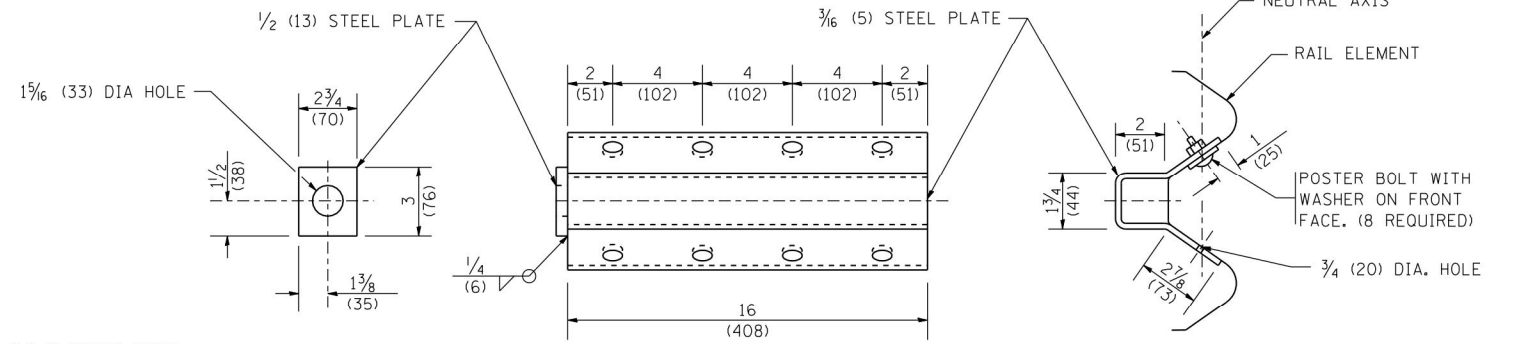
SPLICE PLATE



RAIL ELEMENT SPLICE



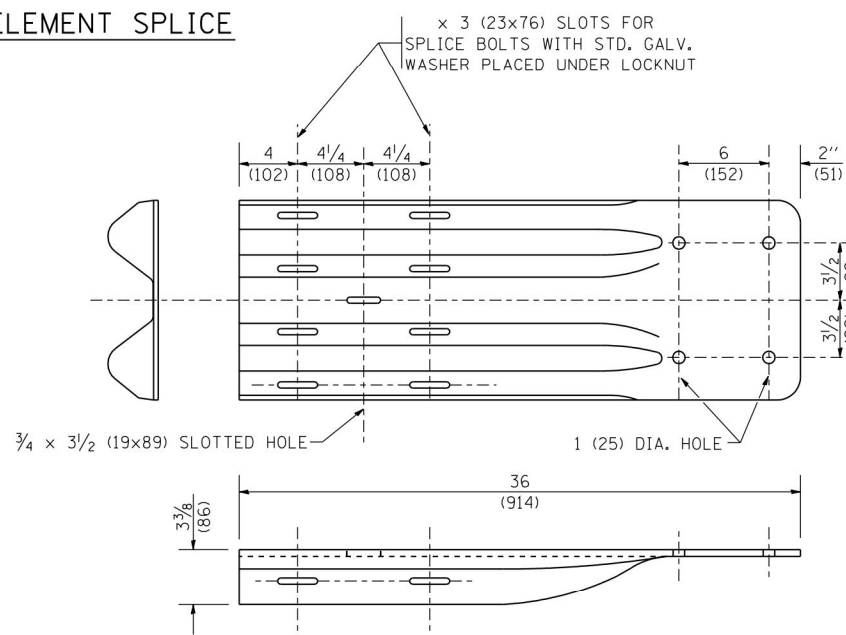
END SECTION



NOTE:

ANCHOR PLATE T SHALL BE USED TO ATTACH CABLE ASSEMBLY TO GUARDRAIL WHEN REQUIRED ON TRAFFIC BARRIER TERMINALS.

ANCHORE PLATE T DETAILS



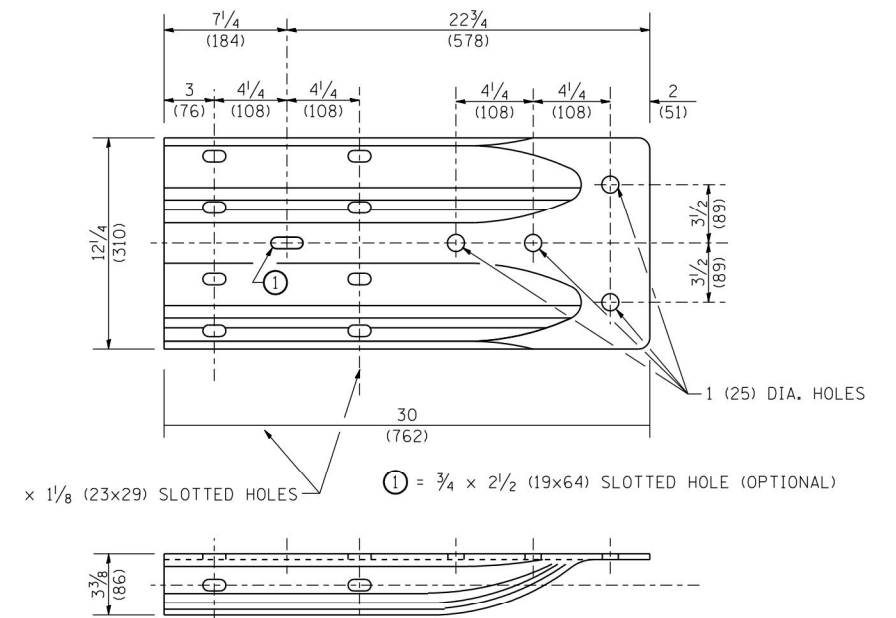
END SHOE

NOTE:

WHEN END SHOE IS ATTACHED TO A BRIDGE PARAPET WHICH HAS AN EXPANSION JOINT, THE BOLTS SHALL BE PROVIDED WITH A LOCKNUT OR DOUBLE NUT AND SHALL BE TIGHTENED ONLY TO A POINT THAT WILL ALLOW GUARDRAIL MOVEMENT.

THE STANDARD END SHOE SHALL BE ATTACHED TO THE CONCRETE WITH PRE-DRILLED OR SELF-DRILLING ANCHOR BOLTS. THE ANCHOR CONE SHALL BE SET FLUSH WITH THE SURFACE OF THE CONCRETE.

EXTERNALLY THREADED STUDS PROTRUDING FROM THE SURFACE OF THE CONCRETE WILL NOT BE PERMITTED.



ALTERNATE END SHOE

FILE NAME = W:\diststd\22x34\bm21.dgn

USER NAME = gegl@nabt
PLOT SCALE = 50.0000' / IN.
PLOT DATE = 1/4/2008

DESIGNED -
DRAWN -
CHECKED -
DATE -

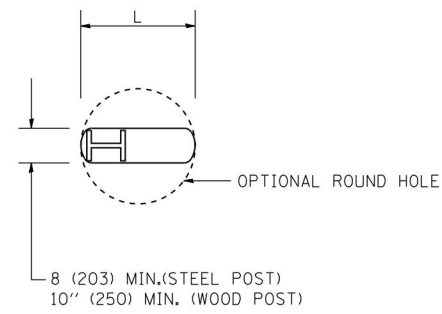
REVISED - 10-31-06
REVISED -
REVISED -
REVISED -

**STATE OF ILLINOIS
DEPARTMENT OF TRANSPORTATION**

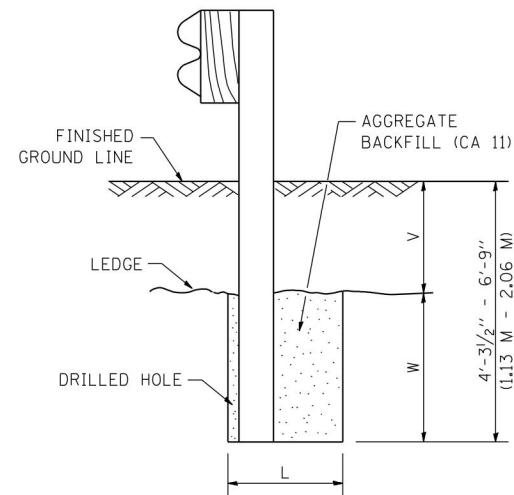
**REMOVE AND REERECT
STEEL PLATE BEAM GUARDRAIL**

SCALE: NONE SHEET NO. 3 OF 4 SHEETS STA. TO STA.

F.A.P. RTE.	SECTION	COUNTY	TOTAL SHEETS	SHEET NO.
VAR.	2019-004-1	VARIOUS	21	14
BM-21		CONTRACT NO. 62H85		
FED. ROAD DIST. NO. 1 ILLINOIS FED. AID PROJECT				



PLAN

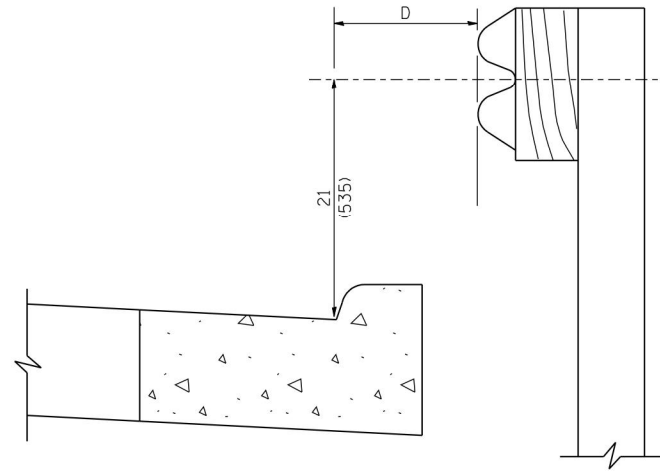


NOTE:

LEDGE LINE IS TOP OF ROCK LEDGE OR HARD SLAG FILL.

ELEVATION

FOOTING FOR POST WHEN IMPERVIOUS MATERIAL IS ENCOUNTERED



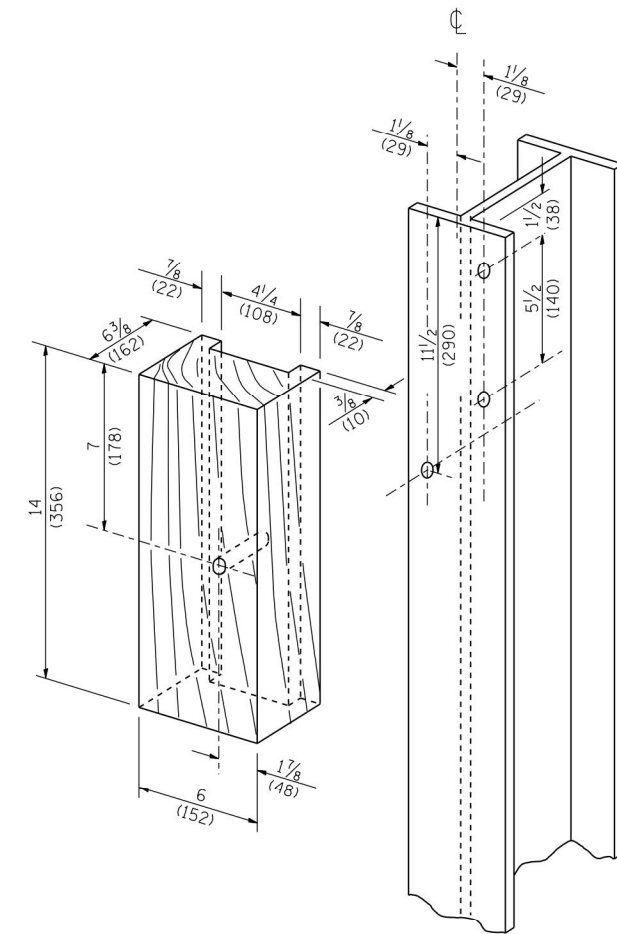
NOTE:

IF IT IS NECESSARY FOR D TO BE MORE THAN 12 (300) AND LESS THAN 10'-0'' (3.0 M) TYPE M-2 (M-5) CURB AND GUTTER (STD. 606001) SHALL BE USED IN FRONT OF AND IN ADVANCE OF THE GUARDRAIL.

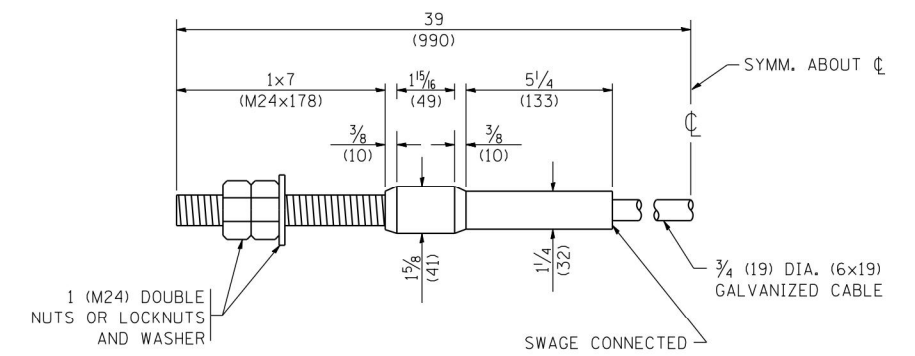
GUARDRAIL PLACED BEHIND CURB

(D = 0 DESIRABLE TO 12 (300) MAXIMUM)

V	W	L	
		STEEL POST	WOOD POST
0 - 18 (0 - 460)	24 (610)	21 (530)	23 (580)
>18 - 41.5 (> 460 - 825)	12 (305)	8 (203)	10 (250)
>41.5 - 53.5 (> 825 - 1.13 M)	12 - 0 (350 - 0)	8 (203)	10 (250)



WOOD BLOCK-OUT AND STEEL POST DETAILS



CABLE ASSEMBLY

(40,000 LBS (18,100 KG) MIN. BREAKING STRENGTH)
TIGHTEN TO TAUT TENSION

FILE NAME = W:\diststd\22x34\bm21.dgn

USER NAME = gaglanobt
PLOT SCALE = 50.0000' / IN.
PLOT DATE = 1/4/2008

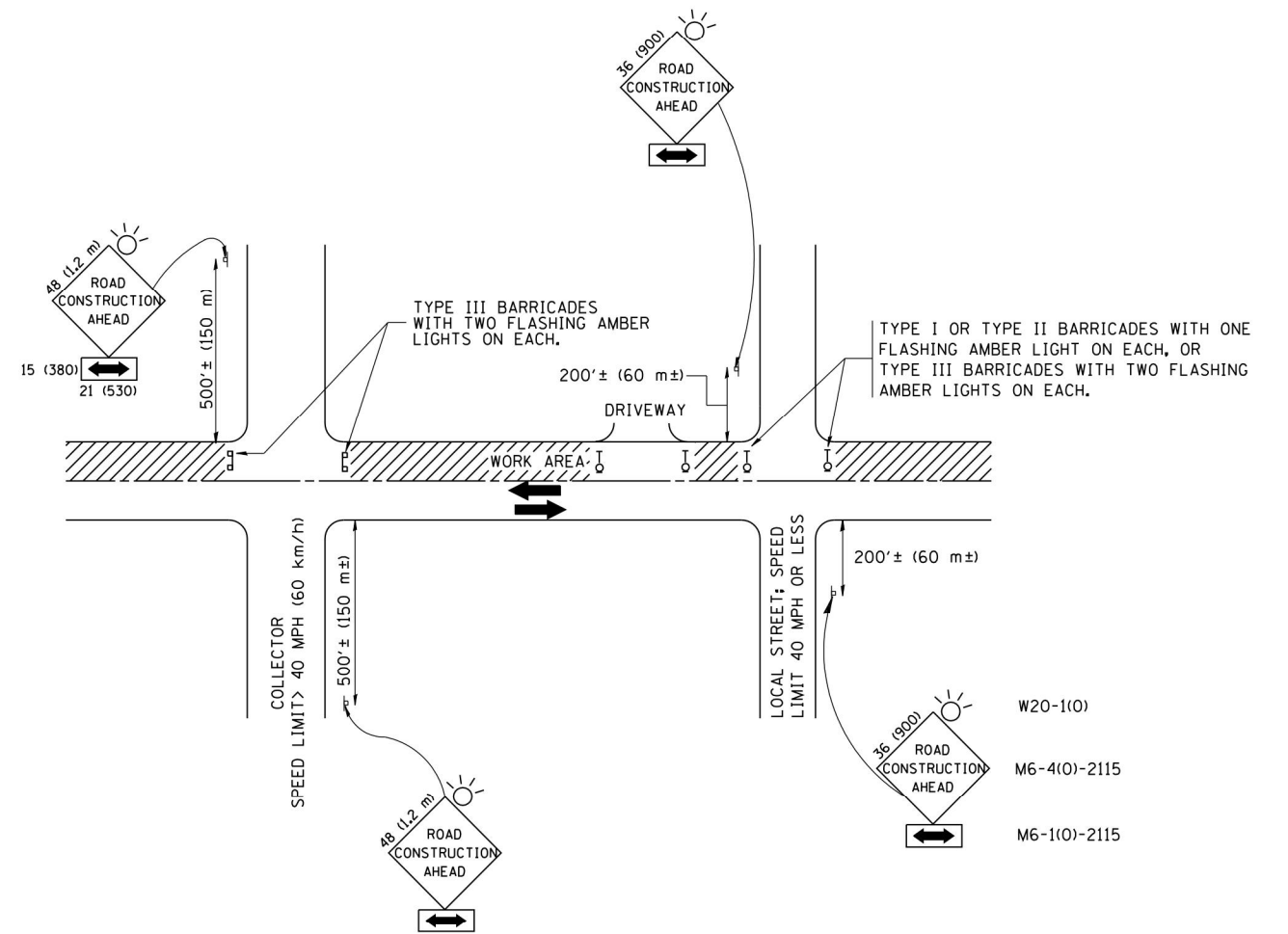
DESIGNED -
DRAWN -
CHECKED -
DATE -

REVISED - 10-31-06
REVISED -
REVISED -
REVISED -

STATE OF ILLINOIS
DEPARTMENT OF TRANSPORTATION

REMOVE AND REERECT
STEEL PLATE BEAM GUARDRAIL
SCALE: NONE SHEET NO. 4 OF 4 SHEETS STA. TO STA.

F.A.P. RTE.	SECTION	COUNTY	TOTAL SHEETS	SHEET NO.
VAR.	2019-004-1	VARIOUS	21	15
BM-21			CONTRACT NO. 62H85	
FED. ROAD DIST. NO. 1 ILLINOIS FED. AID PROJECT				



TRAFFIC CONTROL AND PROTECTION FOR SIDE ROADS, INTERSECTIONS, AND DRIVEWAYS

NOTES:

A. FOR NO LANE RESTRICTION ON THE SIDE ROAD OR DRIVEWAYS

1. SIDE ROAD WITH A SPEED LIMIT OF 40 MPH (60 km/h) OR LESS AS SHOWN ON THE DRAWING AND AS DIRECTED BY THE ENGINEER:

a) ONE **ROAD CONSTRUCTION AHEAD** SIGN 36 x 36 (900x900) WITH A FLASHER AND FLAG MOUNTED ON IT APPROXIMATELY 200' (60 m) IN ADVANCE OF THE MAIN ROUTE.

b) THE CLOSED PORTION OF THE MAIN ROUTE SHALL BE PROTECTED BY BLOCKING WITH TYPE I, TYPE II OR TYPE III BARRICADES, 1/3 OF THE CROSS SECTION OF THE CLOSED PORTION.

2. SIDE ROAD WITH A SPEED LIMIT GREATER THAN 40 MPH (60 km/h) AS SHOWN ON THE DRAWING AND AS DIRECTED BY THE ENGINEER:

a) ONE **ROAD CONSTRUCTION AHEAD** SIGN 48 x 48 (1.2 m x 1.2 m) WITH A FLASHER MOUNTED ON IT APPROXIMATELY 500' (150 m) IN ADVANCE OF THE MAIN ROUTE.

b) THE CLOSED PORTION OF THE MAIN ROUTE SHALL BE PROTECTED BY BLOCKING WITH TYPE III BARRICADES, 1/2 OF THE CROSS SECTION OF THE CLOSED PORTION.

3. WHEN THE SIDE ROAD LIES BETWEEN THE BEGINNING OF THE MAINLINE SIGNING AND THE WORK ZONE, A SINGLE HEADED ARROW (M6-1) SHALL BE USED IN LIEU OF THE DOUBLE HEADED ARROW (M6-4).

B. FOR A LANE CLOSURE ON A SIDE ROAD OR DRIVEWAY:

USE APPLICABLE PORTIONS OF THE TYPICAL APPLICATION OF TRAFFIC CONTROL DEVICES (STD. 701501, STD. 701606 OR THE APPROPRIATE STANDARD). THE SPACING OF SIGNS AND BARRICADES SHALL BE ADJUSTED FOR FIELD CONDITIONS AS DIRECTED BY THE ENGINEER. THE DIRECTIONAL ARROW SHALL BE COVERED OR REMOVED WHEN NO LONGER CONSISTENT WITH THE SIDE ROAD LANE CLOSURE.

C. ADVANCE WARNING SIGNS ARE TO BE OMITTED ON DRIVEWAY UNLESS OTHERWISE NOTED.

D. THE TRAFFIC CONTROL AND PROTECTION FOR SIDE ROADS, INTERSECTIONS, AND DRIVEWAYS SHALL BE INCIDENTAL TO THE COST OF SPECIFIED TRAFFIC CONTROL STANDARDS OR ITEMS.

All dimensions are in millimeters (inches) unless otherwise shown.

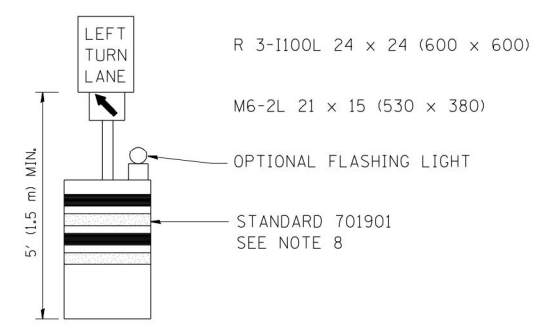
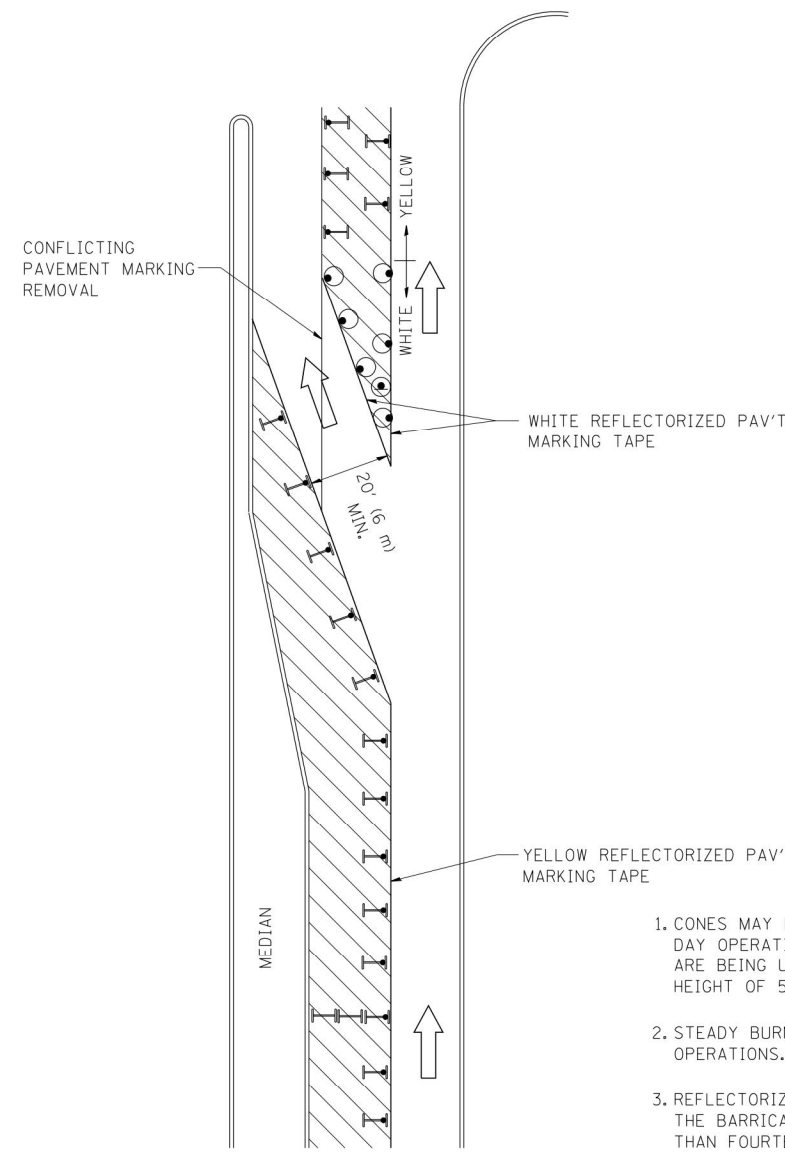
FILE NAME = W:\diststd\22x34\tc10.dgn	USER NAME = gaglianobt	DESIGNED - LHA	REVISED - J. OBERLE 10-18-95
		DRAWN -	REVISED - A. HOUSEH 03-06-96
	PLOT SCALE = 50.000' / IN.	CHECKED -	REVISED - A. HOUSEH 10-15-96
	PLOT DATE = 1/4/2008	DATE - 06-89	REVISED - T. RAMMACHER 01-06-00

STATE OF ILLINOIS
DEPARTMENT OF TRANSPORTATION

TRAFFIC CONTROL AND PROTECTION FOR
SIDE ROADS, INTERSECTIONS, AND DRIVEWAYS

SCALE: NONE SHEET NO. 1 OF 1 SHEETS STA. TO STA.

F.A.P. RTE.	SECTION	COUNTY	TOTAL SHEETS	SHEET NO.
VAR.	2019-004-1	VARIOUS	21	16
TC-10			CONTRACT NO. 62H85	
FED. ROAD DIST. NO. 1 ILLINOIS FED. AID PROJECT				


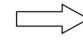
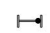


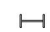


GENERAL NOTES

1. CONES MAY BE SUBSTITUTED FOR BARRICADES OR DRUMS AT HALF THE SPACING DURING DAY OPERATIONS. CONES SHALL BE A MINIMUM OF 28 (710) IN HEIGHT. WHEN CONES ARE BEING USED, THE "LEFT TURN LANE" SIGN MAY BE SKID MOUNTED AT A MINIMUM HEIGHT OF 5' (1.5 m).
2. STEADY BURNING LIGHTS WILL NOT BE REQUIRED ON BARRICADES OR DRUMS FOR DAY OPERATIONS. ALL LIGHTS SHALL BE MONODIRECTIONAL.
3. REFLECTORIZED TEMPORARY PAVEMENT MARKING TAPE SHALL BE PLACED THROUGHOUT THE BARRICADED AREA OF EACH TURN BAY WHERE THE CLOSURE TIME IS GREATER THAN FOURTEEN DAYS.
4. THIS APPLICATION ALSO APPLIES WHEN WORK IS BEING PERFORMED IN THE RIGHT LANE(S) AND THE RIGHT TURN BAY IS TO REMAIN OPEN. UNDER THIS CONDITION, "RIGHT TURN LANE" R3-100 24 x 24 (600 x 600) AND M6-2R 21 x 15 (530 x 380) SHALL BE USED.
5. THESE CONTROLS SHALL SUPPLEMENT MAINLINE TRAFFIC CONTROL FOR LANE CLOSURES.
6. LONGITUDINAL DIMENSIONS MAY BE ADJUSTED TO FIT FIELD CONDITIONS.
7. FORM OPER 725 IS REQUIRED.
8. IF A DRUM OR TYPE II BARRICADE WITH AN ATTACHED SIGN PANEL WHICH MEETS NCHRP 350 REQUIREMENTS IS NOT AVAILABLE, THE SIGNS SHALL BE MOUNTED, ABOVE THE BARRICADES, ON SEPARATE SIGNS SUPPORTS THAT MEET NCHRP 350 PREQUIREMENTS.
9. TRAFFIC CONTROL AND PROTECTION AT TURN BAYS (TO REMAIN OPEN TO TRAFFIC) SHALL BE INCLUDED IN THE COST SPECIFIED TRAFFIC CONTROL STANDARDS OR ITEMS.

All dimensions are in inches (millimeters) unless otherwise shown.

LEGEND

-  WORK AREA
-  LANE OPEN TO TRAFFIC
-  TYPE I OR II BARRICADE WITH STEADY BURN LIGHT
-  DRUM WITH STEADY BURN LIGHT
-  DRUM WITH SIGN (WITH OPTIONAL FLASHING LIGHT) SEE DETAIL
-  TYPE I OR II CHECK BARRICADE WITH FLASHING LIGHT

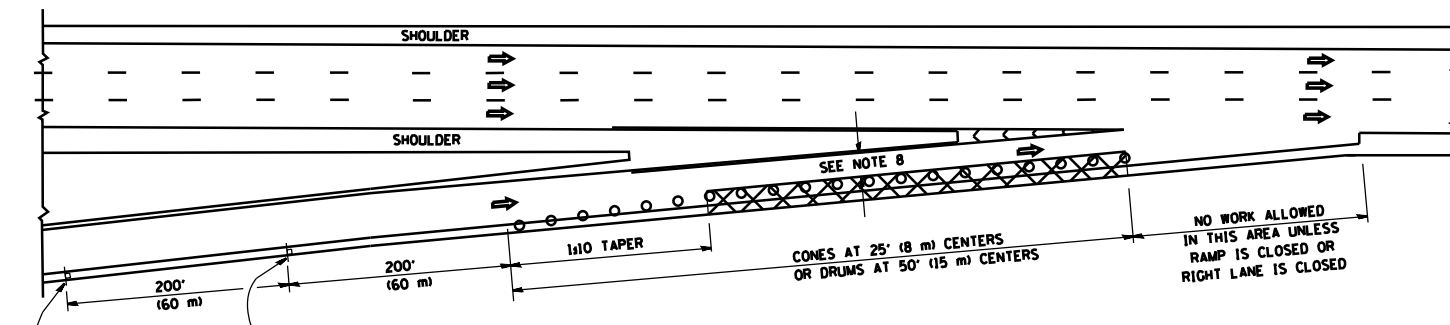
FILE NAME =	USER NAME = drivakosgn	REVISED -T. RAMMACHER 09-08-94	REVISED - R. BORO 09-14-09
et:\pw\work\PWIDOT\DRIVAKOSGN\d0108315\14.dgn		REVISED - A. HOUSEH 11-07-95	REVISED -
	PLOT SCALE = 49.9999' / IN.	REVISED - A. HOUSEH 10-12-96	REVISED -
	PLOT DATE = 9/14/2009	REVISED -T. RAMMACHER 01-06-00	REVISED -

**STATE OF ILLINOIS
DEPARTMENT OF TRANSPORTATION**

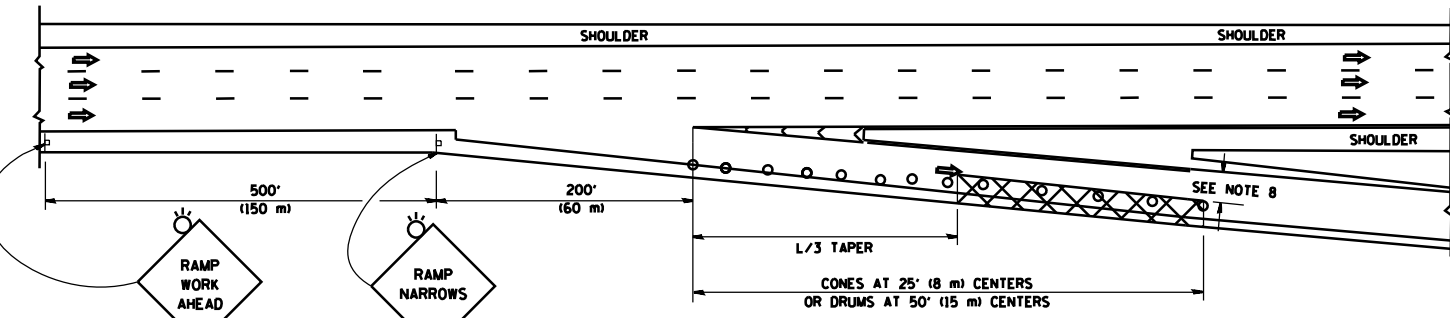
**TRAFFIC CONTROL AND PROTECTION AT TURN BAYS
(TO REMAIN OPEN TO TRAFFIC)**
SCALE: NONE SHEET NO. 1 OF 1 SHEETS STA. TO STA.

F.A. RTE.	SECTION	COUNTY	TOTAL SHEETS	SHEET NO.
VAR.	2019-004-I	VARIOUS	21	17
TC-14		CONTRACT NO. 62H85		
FED. ROAD DIST. NO. 1 ILLINOIS FED. AID PROJECT				

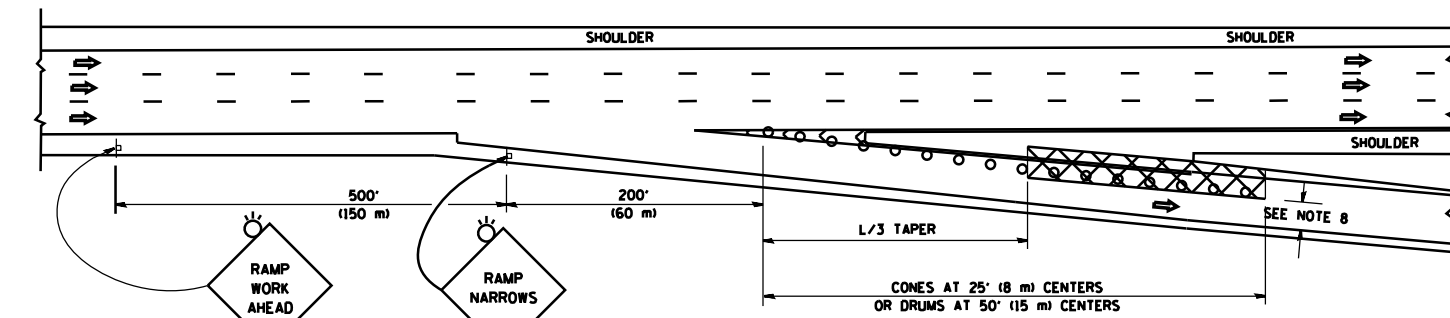
PARTIAL RAMP CLOSURE DETAILS



TYPICAL ENTRANCE RAMP



TYPICAL EXIT RAMP



TYPICAL EXIT RAMP

SYMBOLS

- ACTIVE WORK AREA
- SIGN ON PORTABLE OR PERMANENT SUPPORT
- FLAGGER WITH CONTROL SIGN
- TYPE II BARRICADE OR DRUM WITH STEADY BURN MONO-DIRECTIONAL LIGHT
- CONE, DRUM OR BARRICADE
- IMPACT ATTENUATOR OF TYPE AND TEST LEVEL SPECIFIED

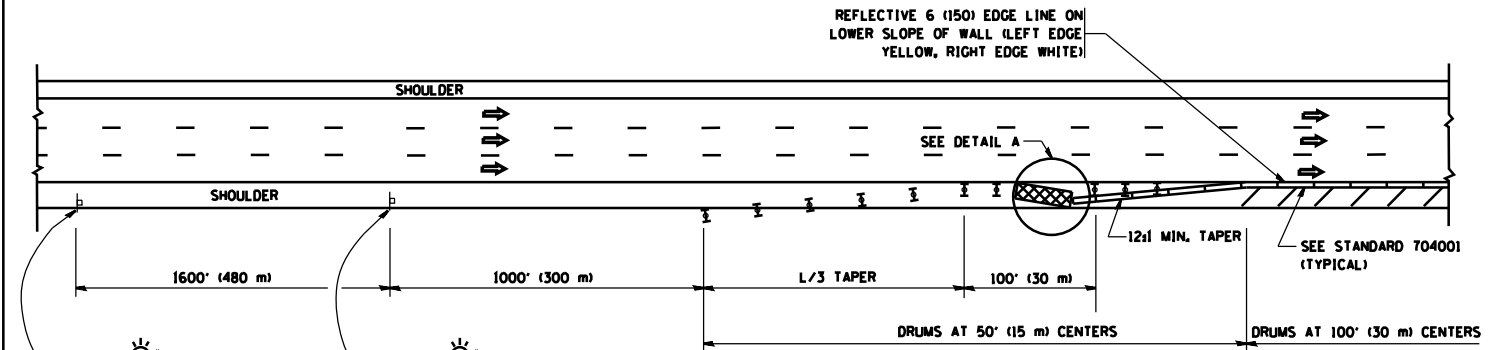
GENERAL NOTES

1. THE "L" DISTANCE EQUALS:

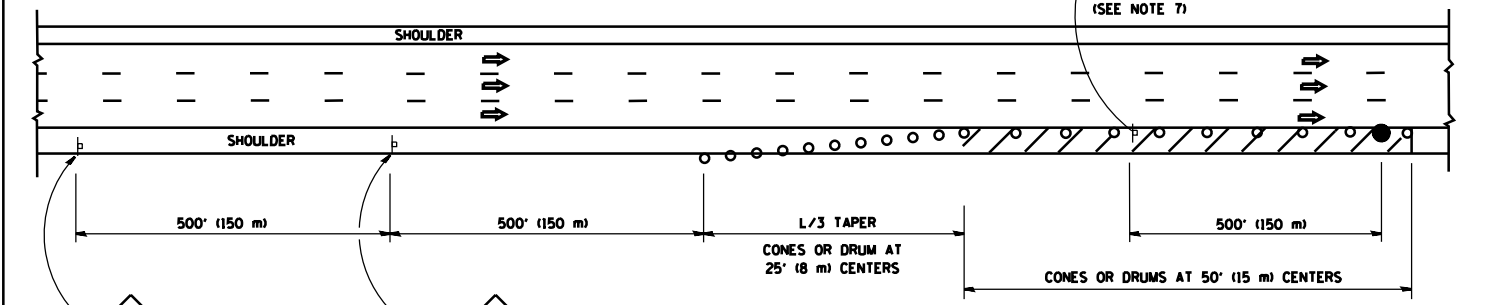
SPEED LIMIT	FORMULAS
45 mph (80 km/h) OR GREATER:	METRIC ENGLISH
	$L = 0.65(WNS)$ $L = (WNS)$

W = WIDTH OF OFFSET IN FEET (METERS)
S = NORMAL POSTED SPEED MPH (KM/H)
2. PLASTIC DRUMS WITH HIGH PERFORMANCE REFLECTIVE SHEETING AND STEADY BURNING LIGHTS ARE REQUIRED FOR ALL NIGHTTIME CLOSURES.
3. ALL SIGNS SHALL BE POST MOUNTED IF THE CLOSURE TIME EXCEEDS FOUR DAYS.
4. FLASHING LIGHTS SHALL BE USED DURING THE HOURS OF DARKNESS AND SHALL BE INSTALLED ABOVE THE FIRST TWO SETS OF SIGNS.

SHOULDER CLOSURE DETAILS

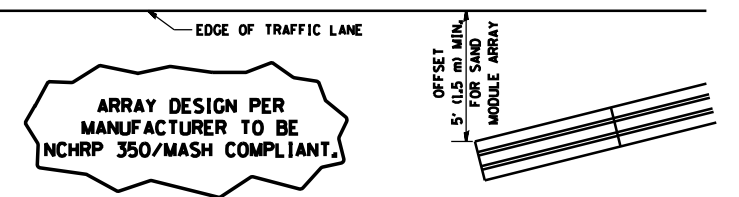


PERMANENT SHOULDER CLOSURE



DAYTIME SHOULDER CLOSURE

THIS DETAIL IS USED WHERE:
1. VEHICLES, EQUIPMENT, WORKERS OR THEIR ACTIVITIES ENCRUCH IN AN AREA CLOSER THAN 15' (4.5 m) TO THE EDGE OF PAVEMENT FOR A PERIOD IN EXCESS OF 15 MINUTES.

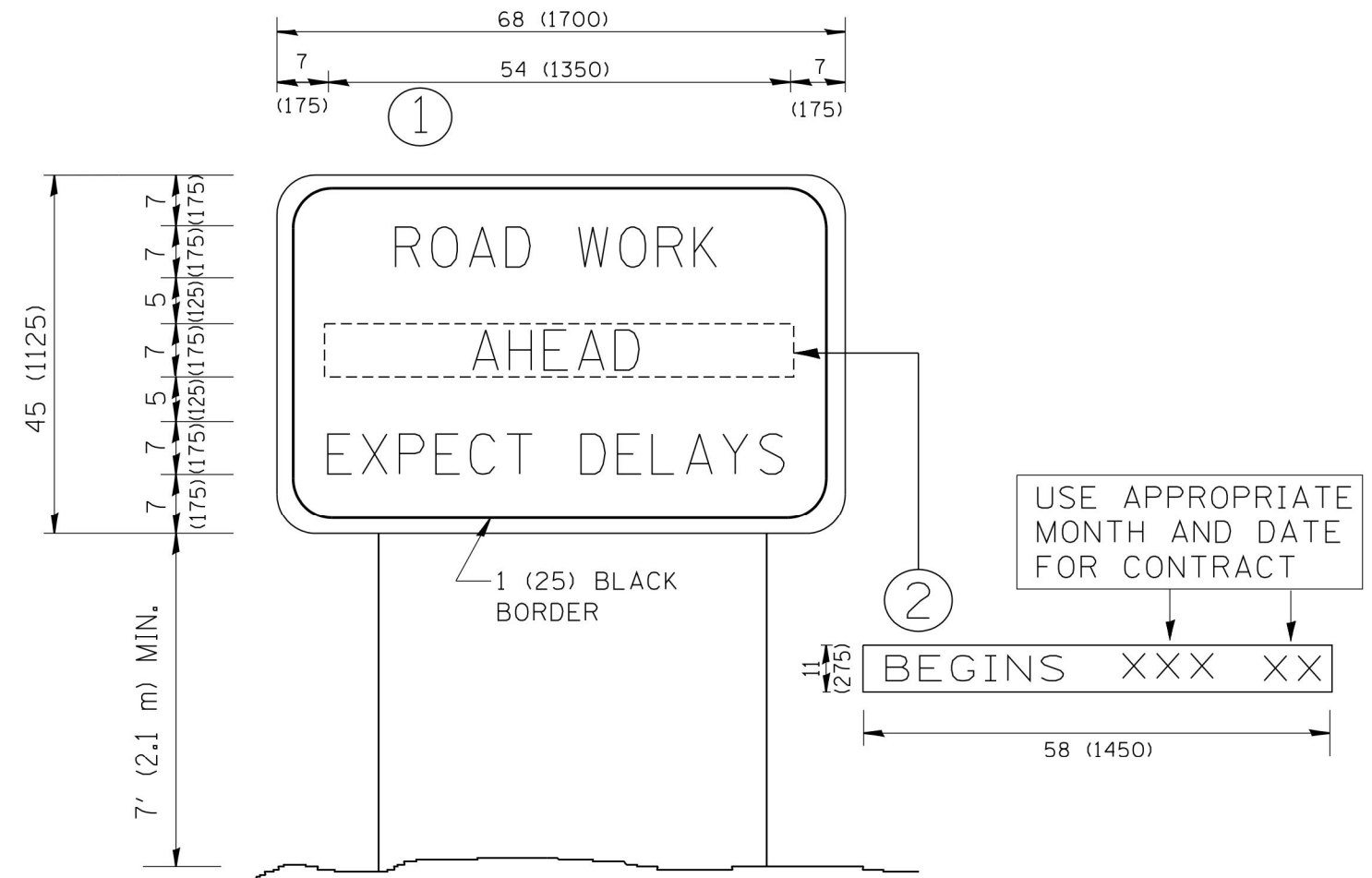


**DETAIL "A"
IMPACT ATTENUATOR, TEMPORARY
(SEE NOTE 5)**

5. THE IMPACT ATTENUATOR, TEMPORARY IS NOT REQUIRED WHEN THE TEMPORARY CONCRETE BARRIER WALL IS PROTECTED BY OR IS TIED INTO THE EXISTING GUARDRAIL. IF OFFSET IS LESS THAN 5 FEET USE NARROW USE TYPE DEVICE TO MEET NCHRP350/MASH.
6. AUTHORIZATION FROM THE DISTRICT'S BUREAU OF TRAFFIC IS REQUIRED FOR ALL FREEWAY CLOSURES.
7. THE FLAGGER AND FLAGGER SIGN ARE REQUIRED AT THE ABOVE WORK SITES WHEN:
 - a. FOUR OR MORE WORK VEHICLES ENTER THE TRAFFIC LANES IN A ONE HOUR PERIOD.
 - b. THE WORK ACTIVITY REQUIRES FREQUENT ENCROACHMENT INTO THE LANE OPEN TO TRAFFIC.
 THE FLAGGER SHALL BE STATIONED APPROXIMATELY 100' (30 m) TO 200' (60 m) IN ADVANCE OF THE WORKERS.
8. 12' MIN. WIDTH TANGENT SECTION
16' MIN. WIDTH CURVE SECTION.

ALL DIMENSIONS ARE IN INCHES (MILLIMETERS) UNLESS OTHERWISE SHOWN.

FILE NAME =	USER NAME = lveysa	DESIGNED -	REVISED - J.A.F. 12-06	STATE OF ILLINOIS DEPARTMENT OF TRANSPORTATION	TRAFFIC CONTROL DETAILS FOR FREEWAY SHOULDER CLOSURES AND PARTIAL RAMP CLOSURES			F.A. RTE.	SECTION	COUNTY	TOTAL SHEETS	SHEET NO.
ca:\pwwork\pwwork\lveysa\d0188315\c17.dgn		DRAWN - D.W.S.	REVISED - S.P.B. 01-07		SCALE: NONE							
		CHECKED -	REVISED - S.P.B. 12-09		SHEET NO. 1 OF 1 SHEETS	STA.	TO STA.					
		DATE - 11-96	REVISED - M.D. 06-13		CONTRACT NO.			FED. ROAD DIST. NO. 1 ILLINOIS FED. AID PROJECT				



NOTES:

1. USE BLACK LETTERING ON ORANGE BACKGROUND.
2. ERECT SIGNS IN ADVANCE OF THE LOCATION FOR THE "ROAD CONSTRUCTION AHEAD" SIGN AT LOCATIONS AS DIRECTED BY THE ENGINEER.
3. ERECT SIGN ① WITH INSTALLED PANEL ② ONE WEEK PRIOR TO THE START OF CONSTRUCTION.
4. REMOVE PANEL ② SOON AFTER THE START OF CONSTRUCTION.
5. SEE SPECIAL PROVISION FOR "TEMPORARY INFORMATION SIGNING" FOR ADDITIONAL INFORMATION.
6. ONE SIGN ASSEMBLY EQUALS 25.70 SQ. FT. (2.3 SQ. M.)
7. SHALL BE PAID FOR AS TEMPORARY INFORMATION SIGNING.

ALL DIMENSIONS ARE IN INCHES (MILLIMETERS) UNLESS OTHERWISE SHOWN.

FILE NAME = W:\diststd\22x34\tc22.dgn	USER NAME = gegl@nbt	DESIGNED -	REVISED - R. MIRS 09-15-97
		DRAWN -	REVISED - R. MIRS 12-11-97
	PLOT SCALE = 50.000' / IN.	CHECKED -	REVISED - T. RAMMACHER 02-02-99
	PLOT DATE = 1/4/2008	DATE -	REVISED - C. JUCIUS 01-31-07

**STATE OF ILLINOIS
DEPARTMENT OF TRANSPORTATION**

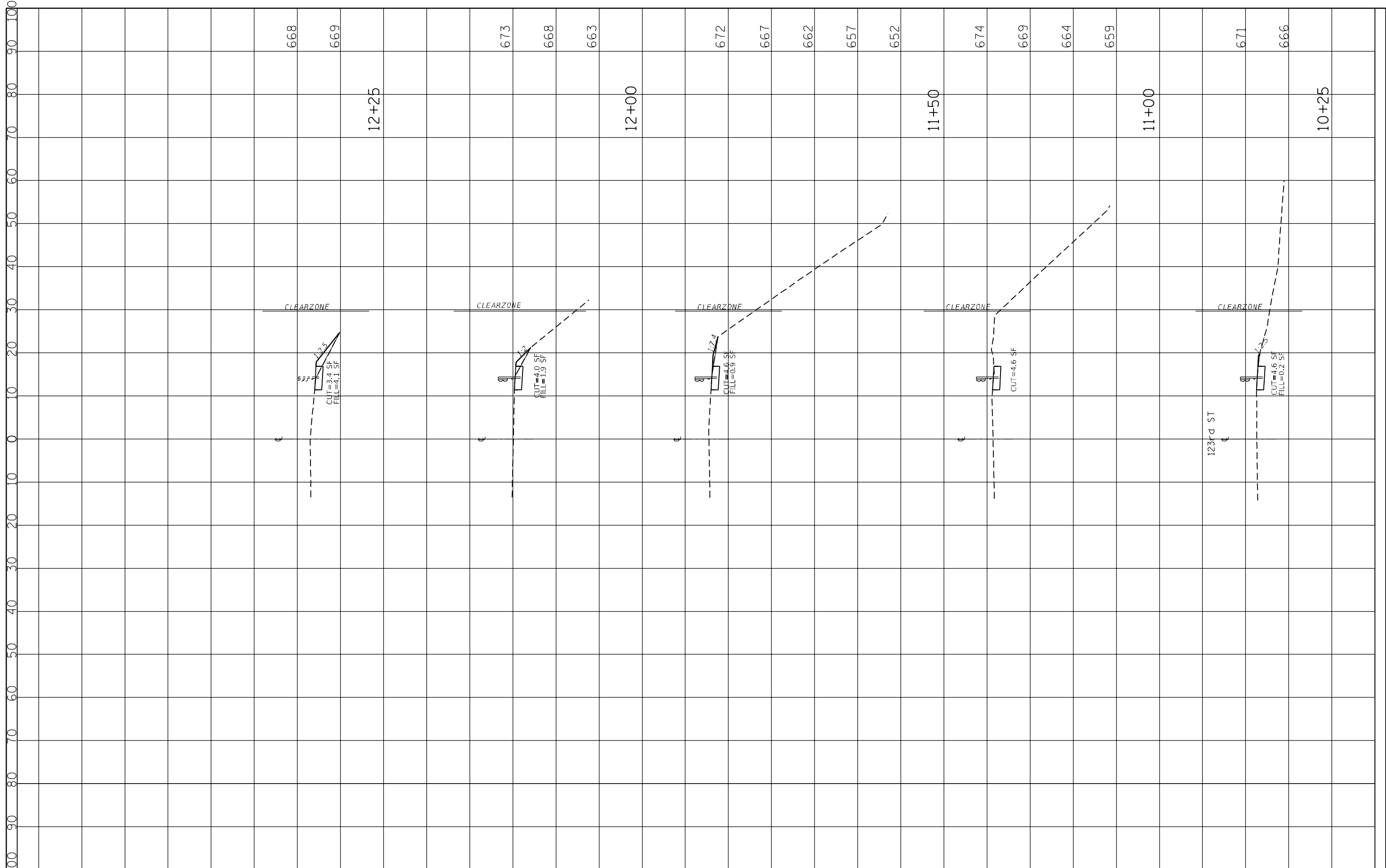
**ARTERIAL ROAD
INFORMATION SIGN**

SCALE: NONE SHEET NO. 1 OF 1 SHEETS STA. TO STA.

F.A. RTE.	SECTION	COUNTY	TOTAL SHEETS	SHEET NO.
VAR.	2019-004-1	VARIOUS	21	19
TC-22			CONTRACT NO. 62H85	
FED. ROAD DIST. NO. 1 ILLINOIS FED. AID PROJECT				

FINAL SURVEY NO.	SURVEYED	BY	DATE
NOTE BOOK	PLOTTED		
AREAS CHECKED	TEMPLATE		
	AREAS CHECKED		

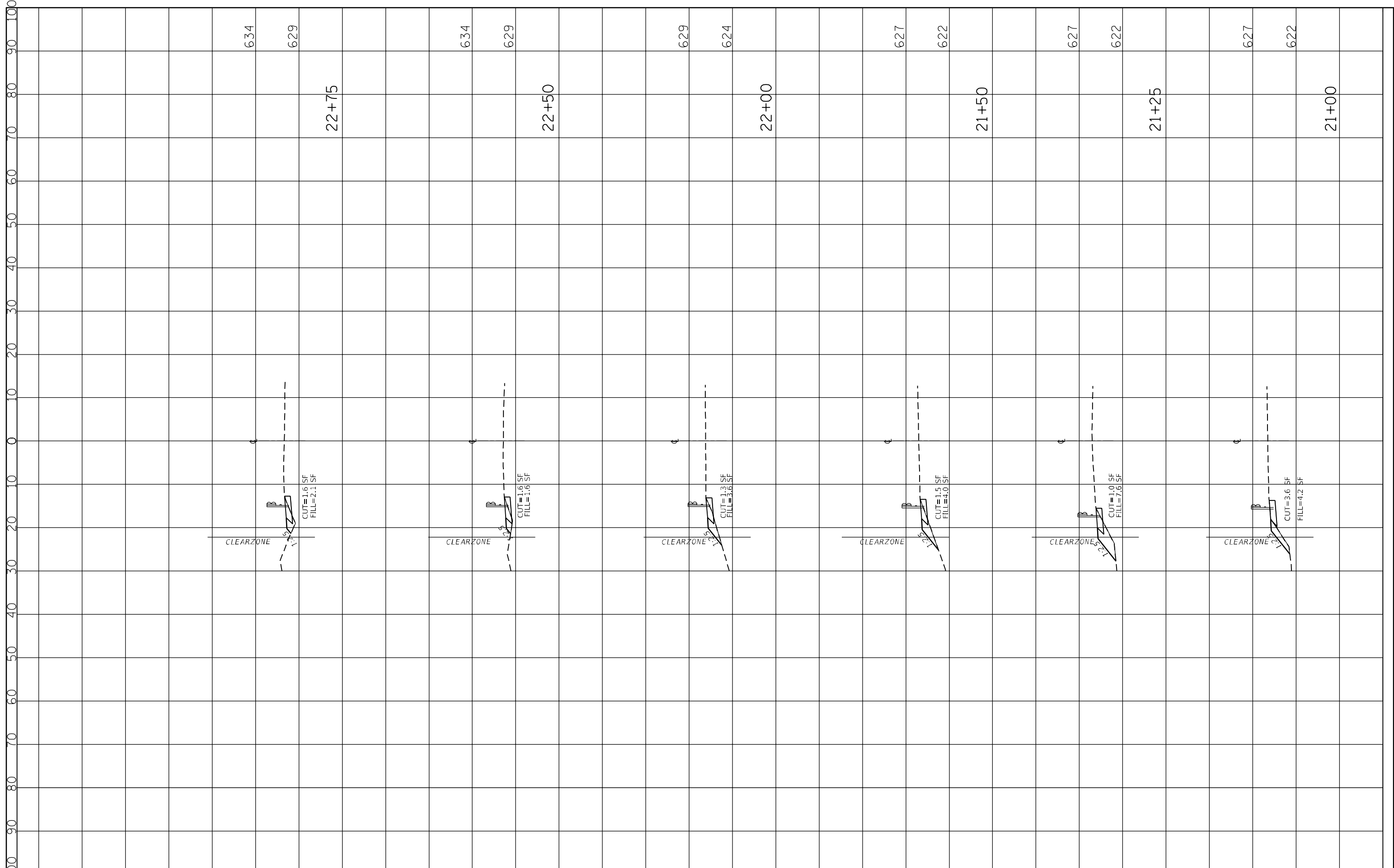
ORIGINAL SURVEY NO.	SURVEYED	BY	DATE
NOTE BOOK	PLOTTED		
AREAS CHECKED	TEMPLATE		
	AREAS CHECKED		



FILE NAME =	USER NAME = mkoehler	DESIGNED - TN	REVISED -	STATE OF ILLINOIS DEPARTMENT OF TRANSPORTATION	CROSS SECTION - 123RD ST /McARTH RD (LOCATION 1)	F.A.P. RTE.	SECTION	COUNTY	TOTAL SHEETS	SHEET NO.	
P:\2019\ME19003_Va-Va-PhII\W010.62H85.62H86	Order\1 Replacements\01-CADD\02-Shts\62H85\DR\11-11-XSection.dgn	REVISION	REVISED -			330	2019-004-1	VARIOUS	21	20	
#MODELNAME*	PLOT SCALE = 1/4" = 1' / in.	CHECKED - TN	REVISED -			CONTRACT NO. 62H85					
	PLOT DATE = 12/9/2019	DATE -	REVISED -			SCALE:	SHEET 1 OF 2 SHEETS	STA.	TO STA.	ILLINOIS FED. AID PROJECT	

FINAL SURVEY NO.	SURVEYED PLOTTED AREAS CHECKED	BY	DATE

ORIGINAL SURVEY NO.	SURVEYED PLOTTED AREAS CHECKED	BY	DATE



FILE NAME = P:\2019\ME19003.Var\PH11\W010.62H85.62H86	USER NAME = mkoehler	DESIGNED - TN	REVISED -
		CHECKED - TN	REVISED -
		DATE -	REVISED -

**STATE OF ILLINOIS
DEPARTMENT OF TRANSPORTATION**

CROSS SECTION - KEAN AVENUE (LOCATION 2)	
SCALE:	STATION TO STATION
SHEET 2	OF 2 SHEETS

F.A.P. RTE. 330	SECTION 2019-004-I	COUNTY VARIOUS	TOTAL SHEETS 21	SHEET NO. 21
CONTRACT NO. 62H85				
ILLINOIS FED. AID PROJECT				