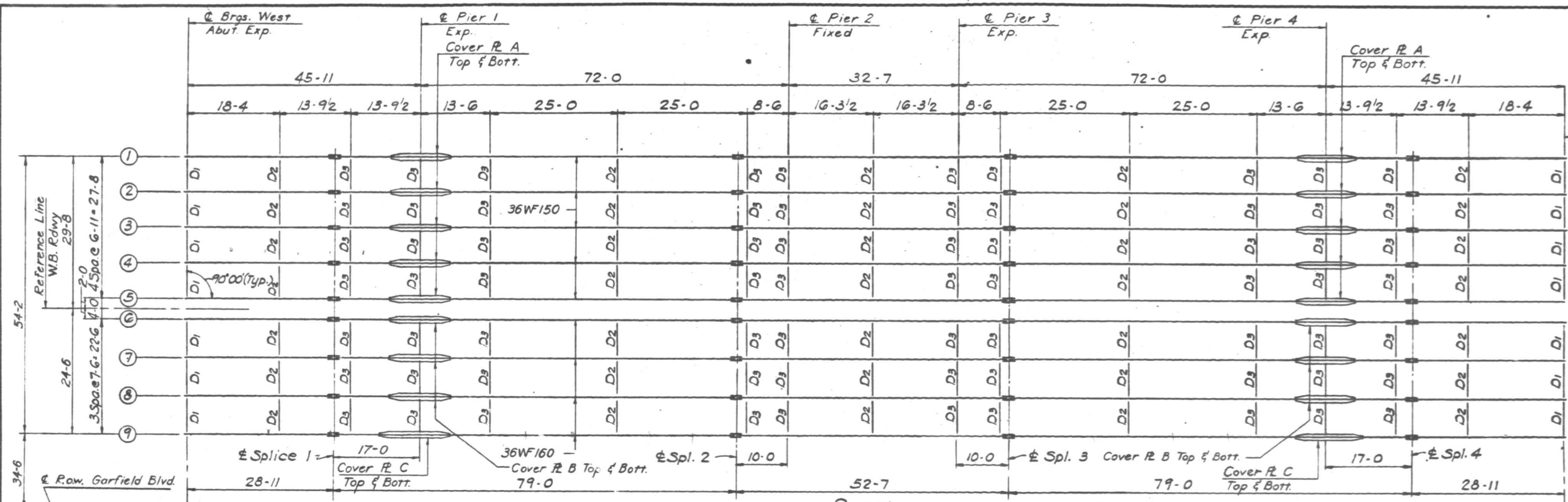


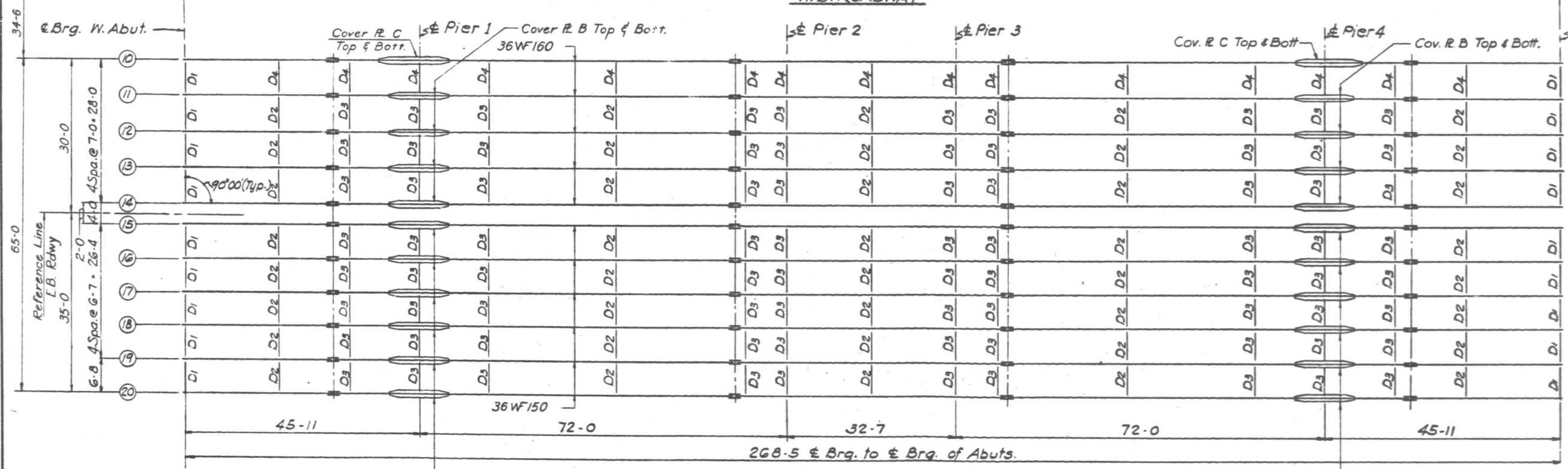
Contract: 62K25

These For Information Only Sheets show the English dimensions for structures 0161152 and 0161153. The plans **do not include beam 9A** of the west bound structure 0161153. Beam 9A is shown on the metric plans included in the contract plans.

FEDERAL-AID ROUTE NO.	SECTION	COUNTY	TOTAL SHEETS	SHEET NO.
F.A.I. - 94	2021-904-HB 2021-904-HF	COOK	59	27
FED. ROAD DIV. NO. 4 ILLINOIS PROJECT				



PLAN
W.B. ROADWAY



PLAN
E.B. ROADWAY

NOTE:
Diaphragm and Splice Spacing in E.B. Roadway same as shown for W.B. Roadway.

NOTES:
For Bearing and Steel Details See sh. 12
For Exp. Guard & Diaphragm Details See sh. 13 & 14

Designed By: H.M.
Drawn By: R.N. & W.D.
Checked By: H.N.

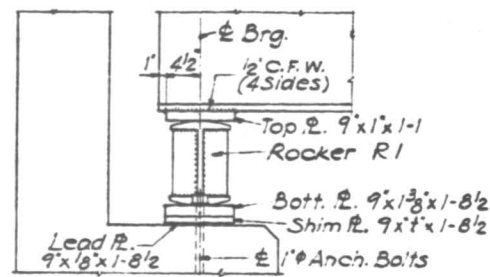
Sh. No. 11 of 31

ILLINOIS DIVISION OF HIGHWAYS
SOUTH EXPRESSWAY

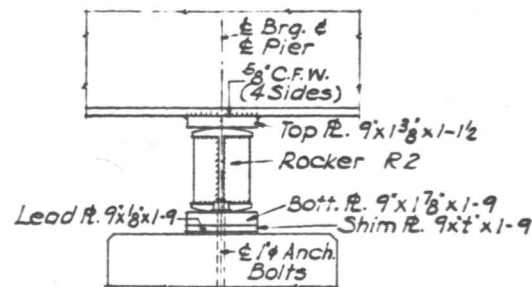
**W. GARFIELD BLVD. STRUCTURE
FRAMING PLAN**

SCALES: NONE DATE: SEPTEMBER 1960

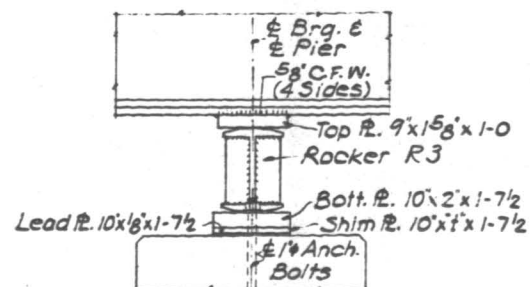




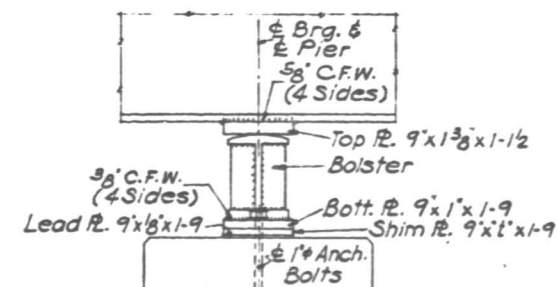
EXP. BRG. AT ABUT.
40 Req'd



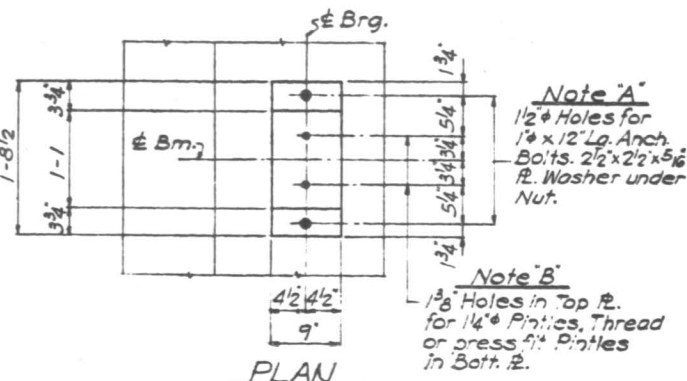
EXP. BRG. AT PIER 3
20 Req'd



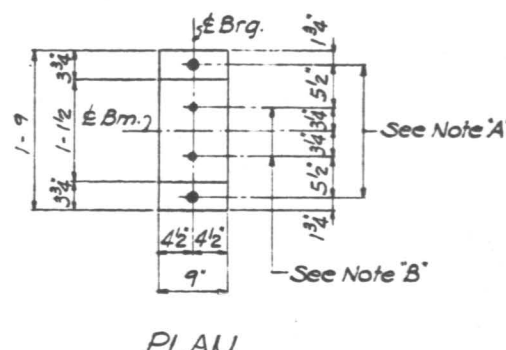
EXP. BRG. AT PIERS 1 & 4
40 Req'd



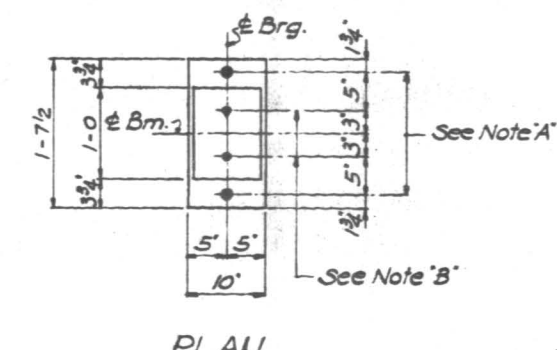
FIXED BRG. AT PIER 2
20 Req'd



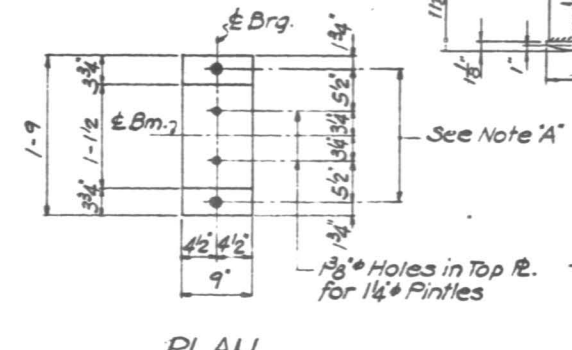
PLAN



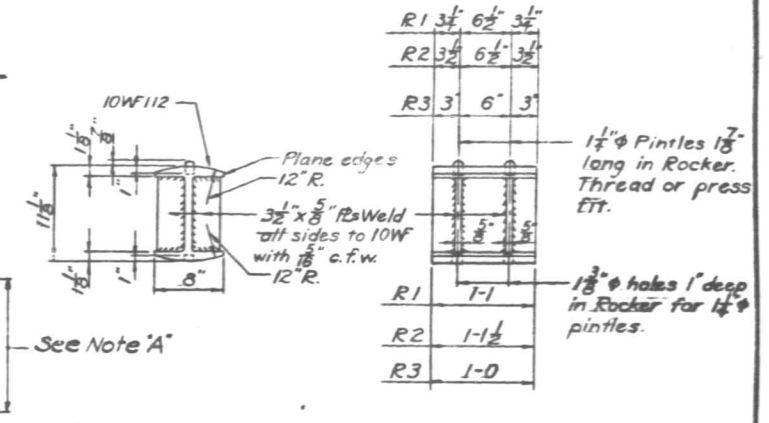
PLAN



PLAN

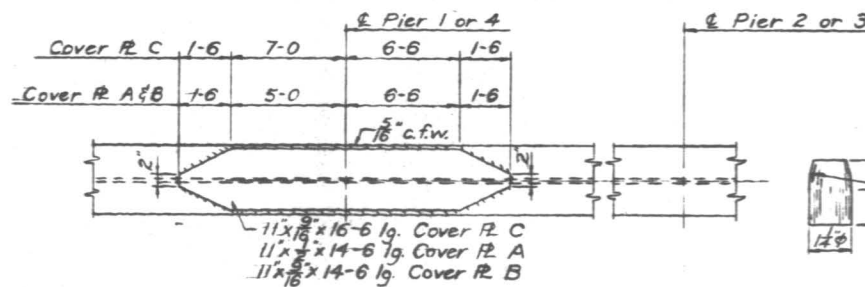


PLAN

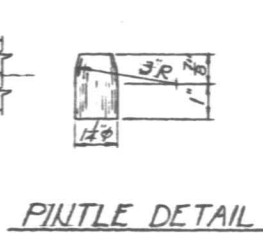


DETAIL OF ROCKER

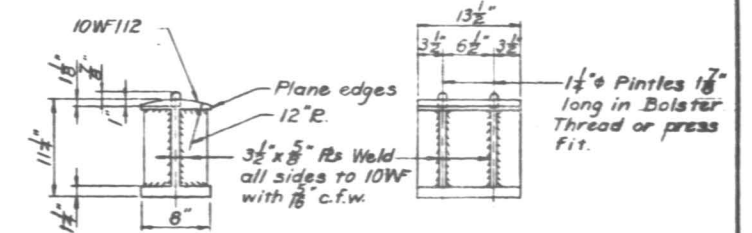
Beams	1	2	3	4	5	6	7	8	9	10	11	12	13	14	15	16	17	18	19	20	
W. Abutment																					
Pier 1	1/4	1/4																			
Pier 2	1/4	1/4																			
Pier 3	1/4	1/4																			
Pier 4	1/4	1/4																			
E. Abutment																					



DETAIL OF COVER PLATE

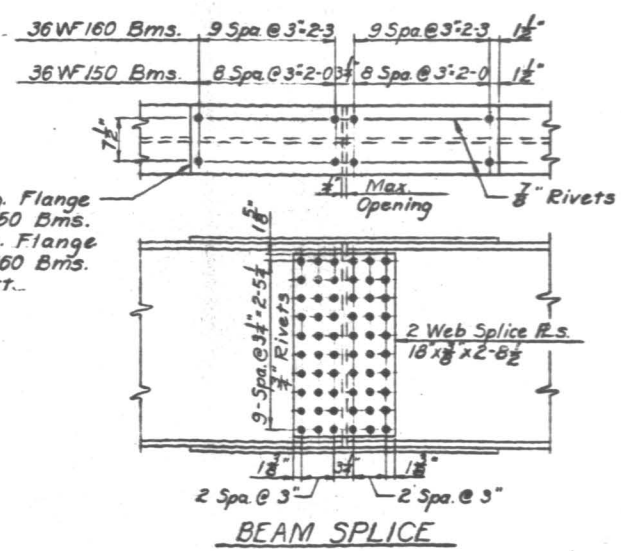


PINTLE DETAIL



DETAIL OF BOLSTER

Loc	W. Abut.	Splice 1	Pier 1	Splice 2	Pier 2	Pier 3	Splice 3	Pier 4	Splice 4	E. Abut.
1	17.03	17.91	18.21	19.32	19.33	19.35	19.36	18.34	18.06	17.27
2	17.03	17.91	18.21	19.32	19.33	19.35	19.36	18.34	18.06	17.27
3	17.10	17.98	18.28	19.39	19.40	19.42	19.43	18.41	18.14	17.34
4	17.17	18.05	18.36	19.46	19.47	19.49	19.50	18.49	18.21	17.41
5	17.25	18.12	18.43	19.53	19.54	19.57	19.57	18.56	18.28	17.48
6	17.25	18.12	18.43	19.53	19.54	19.57	19.57	18.56	18.28	17.48
7	17.17	18.05	18.35	19.46	19.46	19.49	19.50	18.48	18.20	17.41
8	17.09	17.97	18.27	19.38	19.39	19.41	19.42	18.40	18.12	17.33
9	17.03	17.91	18.21	19.32	19.32	19.35	19.35	18.34	18.06	17.27
10	16.83	17.71	18.02	19.13	19.14	19.17	19.18	18.18	17.90	17.16
11	16.89	17.77	18.08	19.19	19.20	19.23	19.24	18.23	17.96	17.22
12	16.96	17.84	18.15	19.26	19.27	19.30	19.31	18.31	18.03	17.29
13	17.03	17.92	18.22	19.34	19.35	19.37	19.38	18.38	18.10	17.36
14	17.11	17.99	18.29	19.41	19.42	19.45	19.46	18.45	18.18	17.44
15	17.11	17.99	18.29	19.41	19.42	19.45	19.46	18.45	18.18	17.44
16	17.04	17.92	18.23	19.34	19.35	19.38	19.39	18.38	18.11	17.37
17	16.97	17.85	18.16	19.27	19.28	19.31	19.32	18.32	18.04	17.30
18	16.90	17.78	18.09	19.20	19.21	19.24	19.25	18.25	17.97	17.23
19	16.83	17.71	18.02	19.14	19.14	19.17	19.18	18.18	17.90	17.16
20	16.83	17.71	18.02	19.14	19.14	19.17	19.18	18.18	17.90	17.16

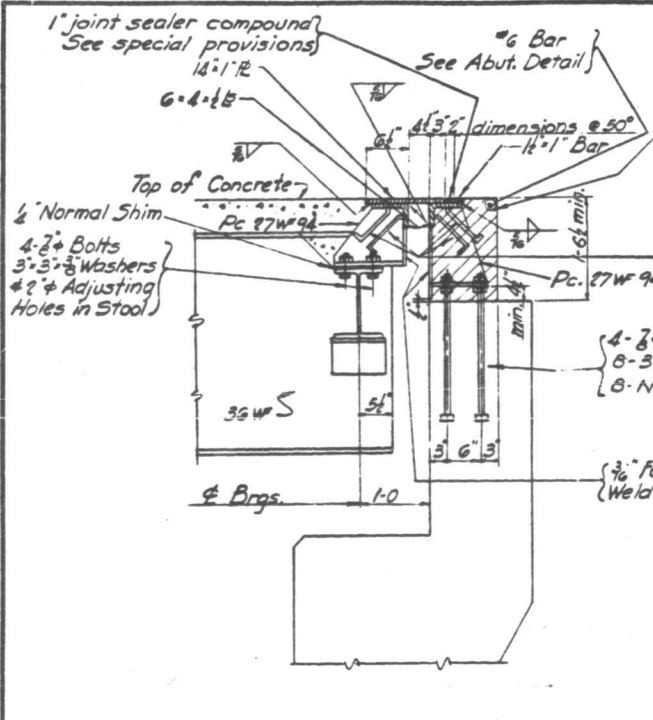


BEAM SPLICE

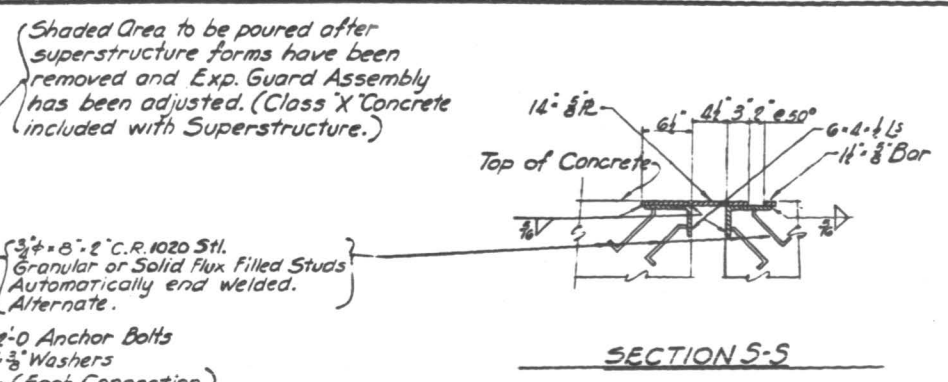
NOTE:
All rivet holes to be reamed with all parts assembled to grade and all parts match marked.

Designed By: RMR
Drawn By: W.D.
Checked By: H.N.

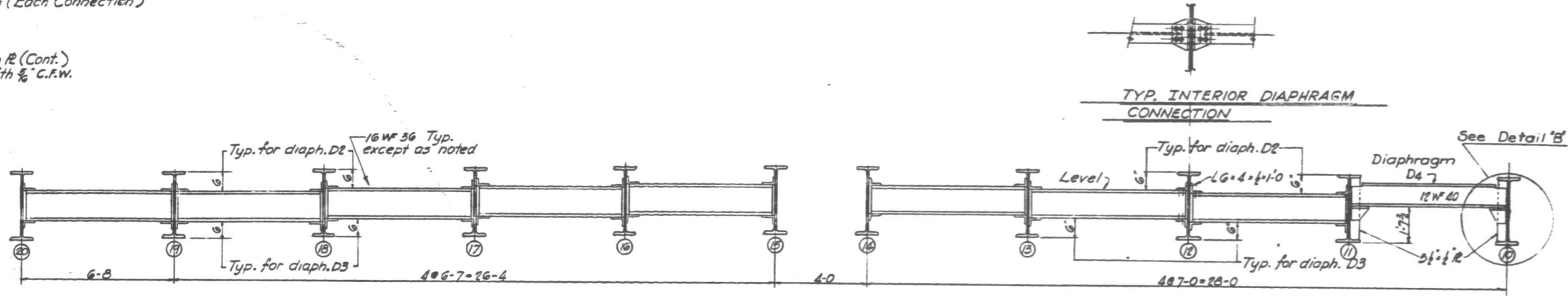
FEDERAL-AID ROUTE NO.	SECTION	COUNTY	TOTAL SHEETS	SHEET NO.
F.A.I.-94	2021-904-HB	COOK	59	30
	2021-904-HF		10	10
FED. ROAD DIV. NO. 4 ILLINOIS PROJECT				



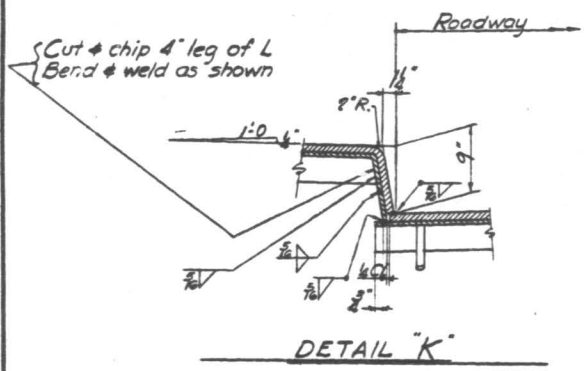
SECTION R-R



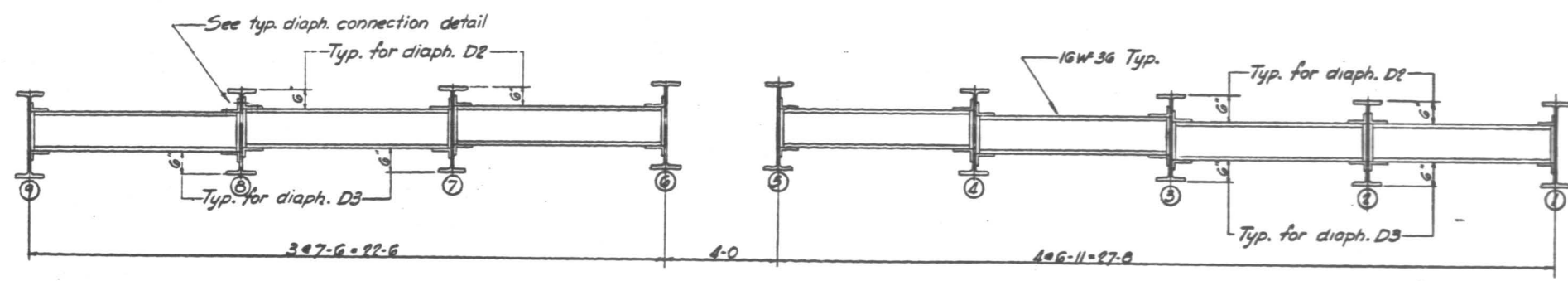
SECTION S-S



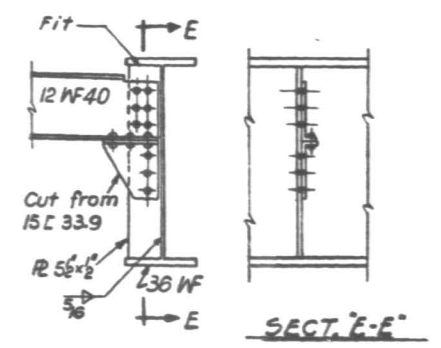
EASTBOUND ROADWAY Looking West



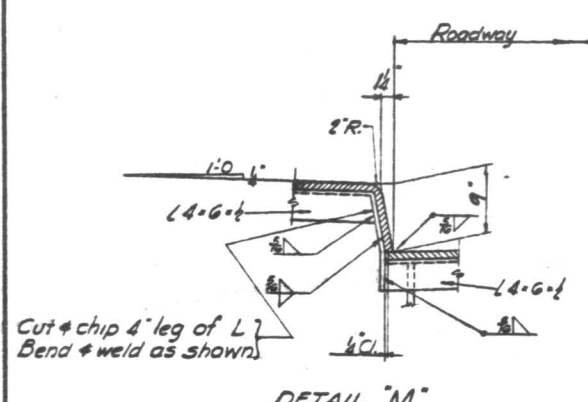
DETAIL K



WESTBOUND ROADWAY Looking West



SECT. E-E



DETAIL M

INTERIOR DIAPHRAGMS

Designed By R.M.R.
 Drawn By P.L.
 Checked By H.N.

Sh. No. 14 of 31

ILLINOIS DIVISION OF HIGHWAYS
 SOUTH EXPRESSWAY

W. GARFIELD BLVD. STRUCTURE
 EXPANSION GUARD &
 DIAPHRAGM DETAILS

SCALE: NONE DATE: SEPTEMBER 1960