

032

STATE OF ILLINOIS  
DEPARTMENT OF TRANSPORTATION

FAI RTE.	SECTION	COUNTY	TOTAL SHEETS	SHEET NO.
94	2019-157-BP	COOK	12	1
		ILLINOIS	CONTRACT NO. 62K25	

FOR INDEX OF SHEETS, SEE SHEET NO. 2

IMPROVEMENT IS LOCATED  
IN THE CITY OF CHICAGO

# PROPOSED HIGHWAY PLANS

FAI ROUTE 94: I-94 (DAN RYAN EXPW)  
AT 55th STREET  
SECTION 2019-157-BP  
PROJECT: NHPP-FC1Z(714)  
BRIDGE PAINTING  
COOK COUNTY  
C-91-110-20

TRAFFIC DATA

I-94 (DAN RYAN EXPW)

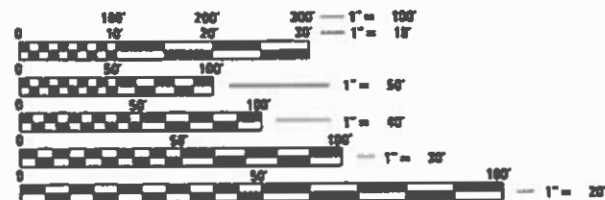
2018 ADT = 311200

POSTED SPEED LIMIT=55 MPH

55th ST (W GARFIELD BLVD)

2018 ADT = 2740

POSTED SPEED LIMIT=30 MPH



FULL SIZE PLANS HAVE BEEN PREPARED USING STANDARD ENGINEERING SCALES. REDUCED SIZED PLANS WILL NOT CONFORM TO STANDARD SCALES. IN MAKING MEASUREMENTS ON REDUCED PLANS, THE ABOVE SCALES MAY BE USED.

G.U.A.N.  
CHICAGO UTILITY ALERT NETWORK  
1-312-744-7000

PROJECT ENGINEER: MIDY, J. ALAIN (847) 221-3056  
PROJECT MANAGER: AQUEEL, FAWAD (847) 705-4247

CONTRACT NO. 62K25



STATE OF ILLINOIS  
DEPARTMENT OF TRANSPORTATION

SUBMITTED DECEMBER 12, 2019

*Anthony J. Ramirez* / *AKB*  
REGIONAL ENGINEER

*Jan 31, 2020*  
ENGINEER OF DESIGN AND ENVIRONMENT

*Jan 31, 2020*  
DIRECTOR OF HIGHWAYS PROJECT IMPLEMENTATION

PRINTED BY THE AUTHORITY  
OF THE STATE OF ILLINOIS

**GENERAL NOTES**

- 1. TITLE SHEET
- 2. INDEX OF SHEETS AND GENERAL NOTES
- 3. SUMMARY OF QUANTITIES
- 4-8. BRIDGE DETAILS SN 016-1152, 016-1153
- 9. FREEWAY ENTRANCE AND EXISTING RAMP CLOSURE DETAILS (TC-08)
- 10. TRAFFIC CONTROL DETAILS FOR FREEWAY SINGLE AND MULTI-LANE WEAVE (TC-09)
- 11. TRAFFIC CONTROL DETAILS FOR FREEWAY SHOULDER CLOSURES AND PARTIAL RAMP CLOSURES (TC-17)
- 12. SIGNING FOR FLAGGING OPERATIONS AT WORK ZONE OPENINGS (TC-18)

BEFORE STARTING ANY EXCAVATION, THE CONTRACTOR SHALL CALL "C.U.A.N." AT (312) 744-7000 FOR FIELD LOCATIONS OF BURIED ELECTRIC, TELEPHONE AND GAS UTILITIES. 48 HOUR NOTIFICATION IS REQUIRED.

THE CONTRACTOR SHALL COORDINATE CONSTRUCTION ACTIVITIES WITH UTILITY COMPANIES, AND THE CITY OF CHICAGO.

THE CONTRACTOR WILL NOT BE ALLOWED TO SET UP A YARD OR FIELD OFFICE ON STATE PROPERTY WITHOUT WRITTEN PERMISSION FROM THE DEPARTMENT.

PLAN DIMENSIONS AND DETAILS RELATIVE TO EXISTING PLANS ARE SUBJECT TO NOMINAL CONSTRUCTION VARIATIONS. THE CONTRACTOR SHALL FIELD VERIFY EXISTING DIMENSIONS AND MAKE NECESSARY APPROVED ADJUSTMENTS PRIOR TO ORDERING OF MATERIALS. SUCH VARIATIONS SHALL NOT BE CAUSE FOR ADDITIONAL COMPENSATION FOR A CHANGE IN SCOPE OF THE WORK. HOWEVER, THE CONTRACTOR WILL BE PAID FOR THE QUANTITY ACTUALLY FURNISHED BASED AT THE UNIT PRICE BID FOR THE WORK.

THE CONTRACTOR SHALL CONTACT THE DISTRICT ONE TRAFFIC CONTROL SUPERVISOR AT (847) 705-4151 A MINIMUM OF 72 HOURS IN ADVANCE OF BEGINNING WORK.

THESE PLANS HAVE BEEN PREPARED FROM NOTES RECEIVED FROM THE BUREAU OF MAINTENANCE BRIDGE INSPECTORS.

DO NOT SCALE PLANS FOR CONSTRUCTION DIMENSIONS.

IT SHALL BE THE CONTRACTOR'S RESPONSIBILITY TO PROTECT AND MAINTAIN THE EXISTING BRIDGE LIGHTING AT ANY LOCATIONS THAT LIGHTING IS ENCOUNTERED ADJACENT TO AN AREA TO BE CLEANED AND PAINTED.

THE CONTRACTOR SHALL BE REQUIRED TO PROVIDE ACCESS TO ABUTTING PROPERTY AT ALL TIMES DURING THE CONSTRUCTION OF THIS PROJECT.

WHEN ARTIFICIAL LIGHTING IS UTILIZED IN NIGHTTIME OPERATIONS, THE CONTRACTOR SHALL EXERCISE THE OUTMOST PRECAUTIONS PREVENTING ADVERSE VISIBILITY TO THE MOTORING PUBLIC AND ADJACENT RESIDENTIAL AREAS.

THE CONTRACTOR SHALL REQUEST AND GAIN THE APPROVAL FROM THE ILLINOIS DEPARTMENT OF TRANSPORTATION'S EXPRESSWAY TRAFFIC OPERATIONS ENGINEER AT [www.idot.ils.gov](http://www.idot.ils.gov) TWENTY FOUR (24) HOURS IN ADVANCE OF ALL DAILY LANE, RAMP AND SHOULDER CLOSURES. THIS ADVANCE NOTIFICATION IS CALCULATED BASED ON WORKWEEK OF MONDAY THROUGH FRIDAY AND SHALL NOT INCLUDE WEEKENDS OR HOLIDAYS.

THE CONTRACTOR SHALL CLOSE LANES ON THE EXPRESSWAY IN ACCORDANCE WITH THE "KEEPING THE EXPRESSWAY OPEN TO TRAFFIC" CONTRACT SPECIAL PROVISIONS.

**STATE STANDARDS**

STD NO.	DESCRIPTION
701400-09	APPROACH TO LANE CLOSURE, FREEWAY/EXPRESSWAY
701401-12	LANE CLOSURE, FREEWAY/EXPRESSWAY
701411-09	LANE CLOSURE, MULTILANE, AT ENTRANCE OR EXIT RAMP, FOR SPEEDS > 45 MPH
701428-01	TRAFFIC CONTROL SETUP AND REMOVAL FREEWAY / EXPRESSWAY
701446-10	TWO LANE CLOSURE, FREEWAY / EXPRESSWAY
701801-06	SIDEWALK, CORNER, OR CROSSWALK CLOSURE
701901-08	TRAFFIC CONTROL DEVICES

**GENERAL PAINT NOTES**

CLEANING AND PAINTING OF THE EXISTING STRUCTURAL STEEL SHALL BE AS SPECIFIED IN THE SPECIAL PROVISION FOR "CLEANING AND PAINTING EXISTING STEEL STRUCTURES".

ALL ITEMS (SUCH AS, BUT NOT LIMITED TO: CONDUITS, BRACKETS AND DECK DRAINS) ATTACHED TO OUTSIDE OF THE FASCIA BEAMS SHOULD BE CLEANED AND PAINTED.

ALL BEAMS, BEARINGS AND OTHER STRUCTURAL STEEL SHALL BE CLEANED PER NEAR WHITE BLAST CLEANING SSPC-SP10.

THE AREAS SHALL BE PAINTED ACCORDING TO THE REQUIREMENTS OF PAINT SYSTEM 1-0Z/E/U. THE COLOR OF THE FINAL FINISH COAT FOR ALL INTERIOR STEEL SURFACES SHALL BE GRAY, MUNSELL NO 5B 7/1. THE COLOR OF THE FINAL FINISH COAT FOR THE EXTERIOR AND BOTTOM FLANGE OF THE FASCIA BEAMS SHALL BE REDDISH BROWN, MUNSELL NO 2. 5YR 3/4.

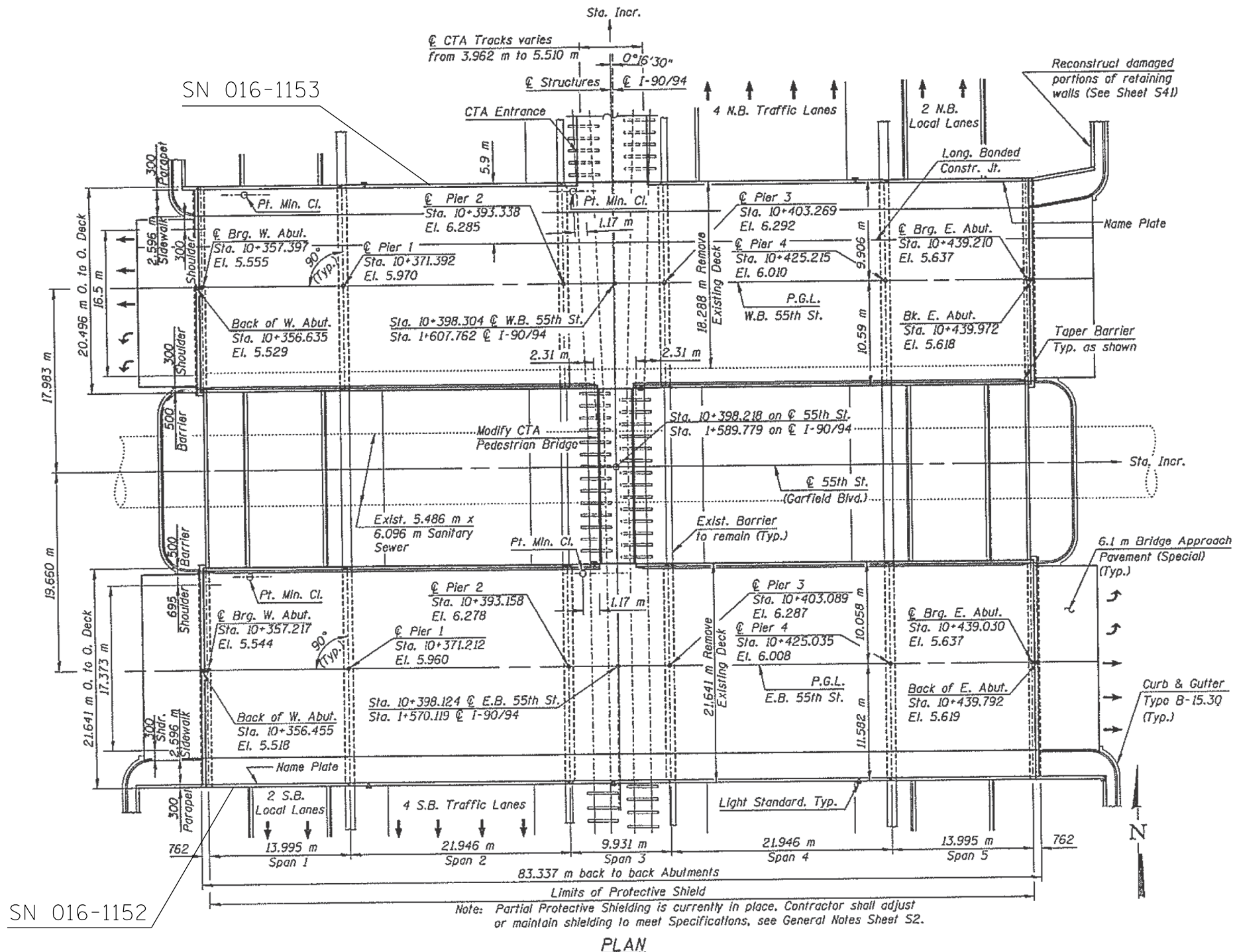
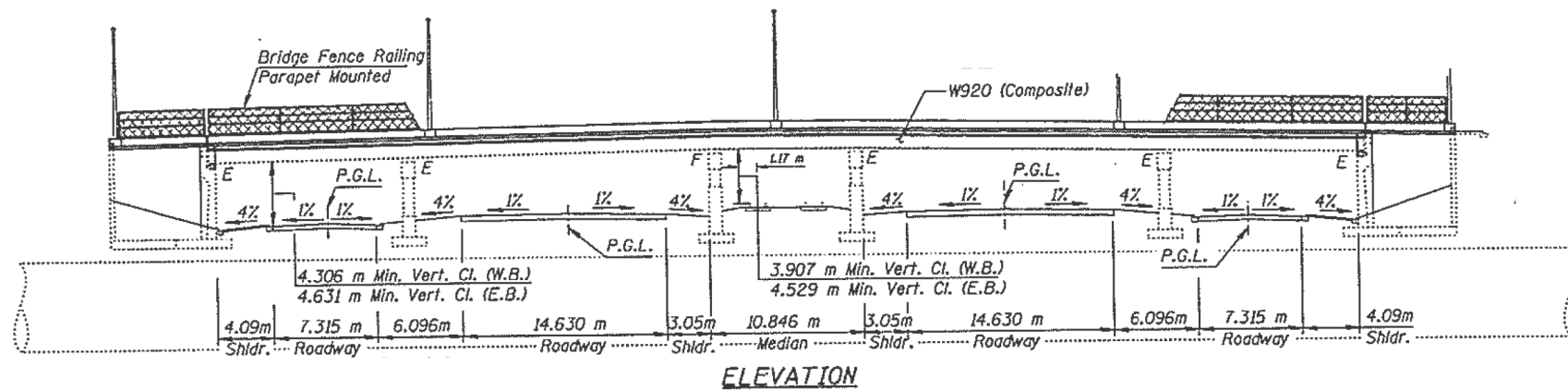
A MINIMUM OF 2 AIR MONITORS FOR EACH STRUCTURE (SN 016-1152 & 016-1153) WILL BE REQUIRED TO MONITOR ABRASIVE BLASTING OPERATIONS AT THESE SITES. SEE SPECIAL PROVISION FOR "CONTAINMENT AND DISPOSAL OF LEAD PAINT CLEANING RESIDUES".

REV. - MS

MODEL: Default  
FILE NAME: P:\p1planroom.dwt  
PROJECT: I:\Projects\131720\CADD\Drawings\DOT Offices\District 1\Project\131720\CADD\Drawings\DOT Offices\131720-sh-eb-lan.dgn

USER NAME = gorengautab	DESIGNED -	REVISED -	<b>STATE OF ILLINOIS DEPARTMENT OF TRANSPORTATION</b>	<b>GENERAL NOTES GENERAL PAINT NOTES</b>		F.A.I. RTE.	SECTION	COUNTY	TOTAL SHEETS	SHEET NO.
PLOT SCALE = 100.0000' / in.	DRAWN -	REVISED -		94	2019-157-BP	COOK	12	2		
PLOT DATE = 12/13/2019	CHECKED -	REVISED -				CONTRACT NO. 62K25				
	DATE -	REVISED -		SCALE:	SHEET OF SHEETS	STA.	TO STA.		ILLINOIS FED. AID PROJECT	





**FOR INFORMATION ONLY**

MODEL: Default  
FILE: \\nrc\p\pub\baron\da\illinois\p\p\DOT\Documents\DOT - Offices\Illinois\1\Projects\11720\Cadd\Design\11720-sh-eb-04.dgn

USER NAME = gorenautab	DESIGNED -	REVISED -
DRAWN -	REVISED -	
PLOT SCALE = 100.0000' / in.	CHECKED -	REVISED -
PLOT DATE = 12/10/2019	DATE -	REVISED -

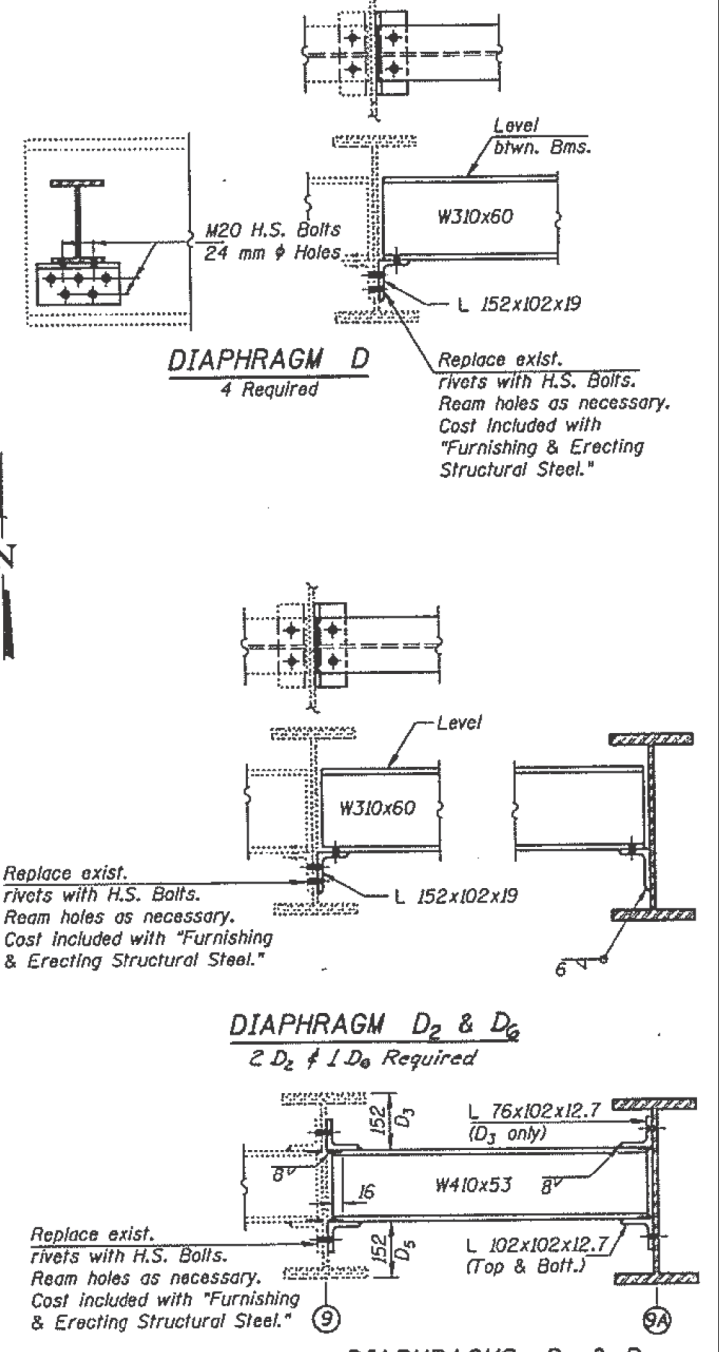
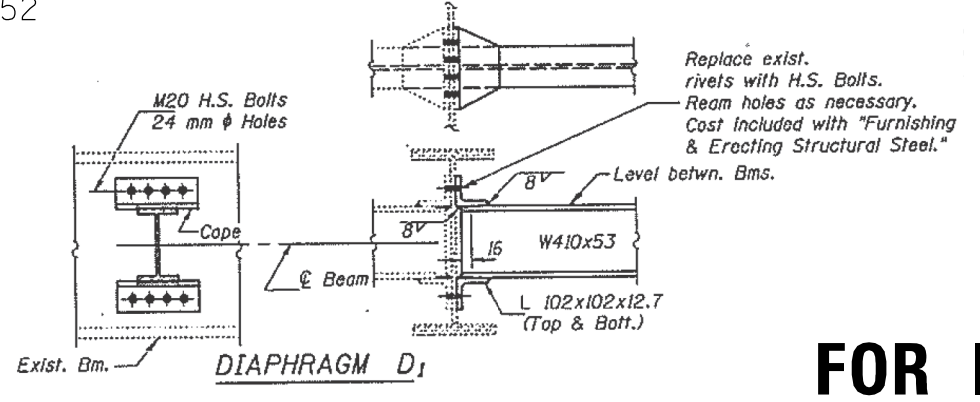
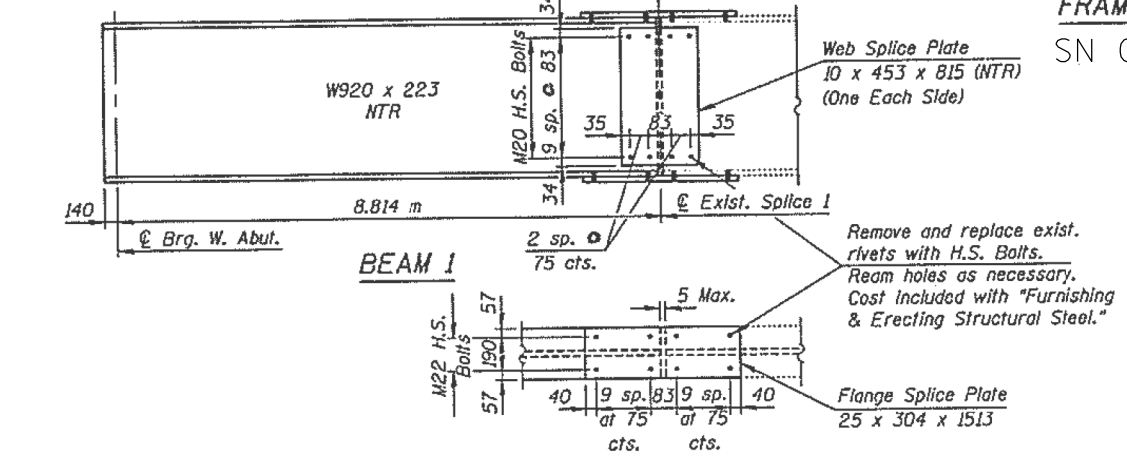
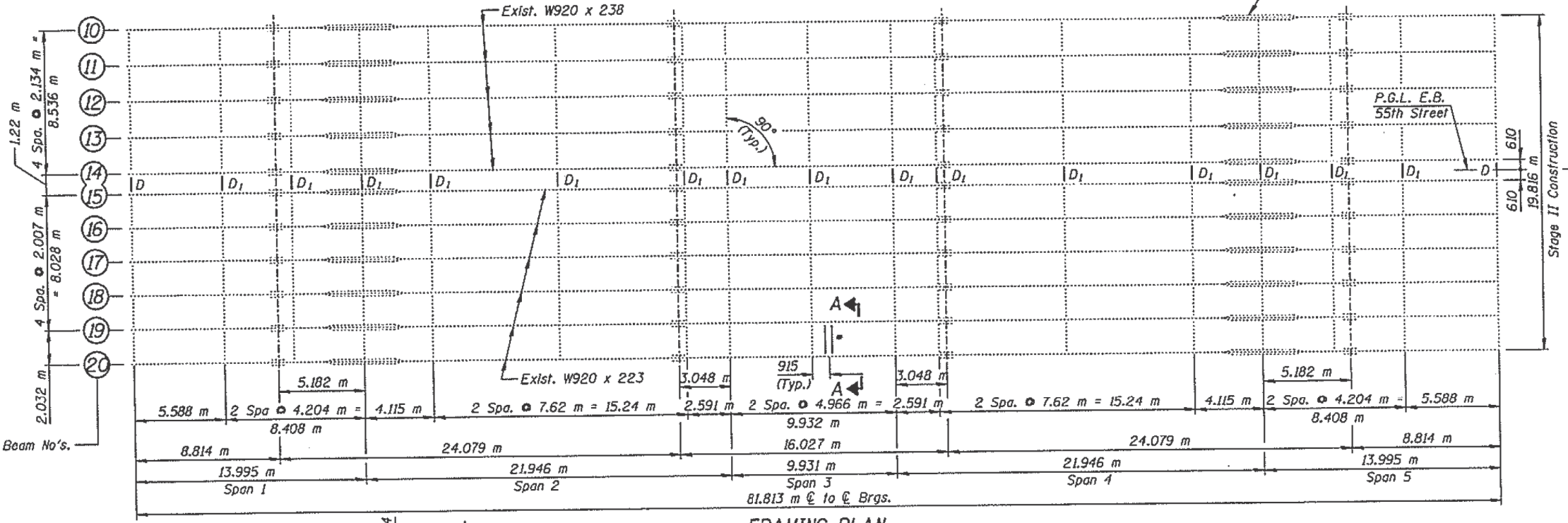
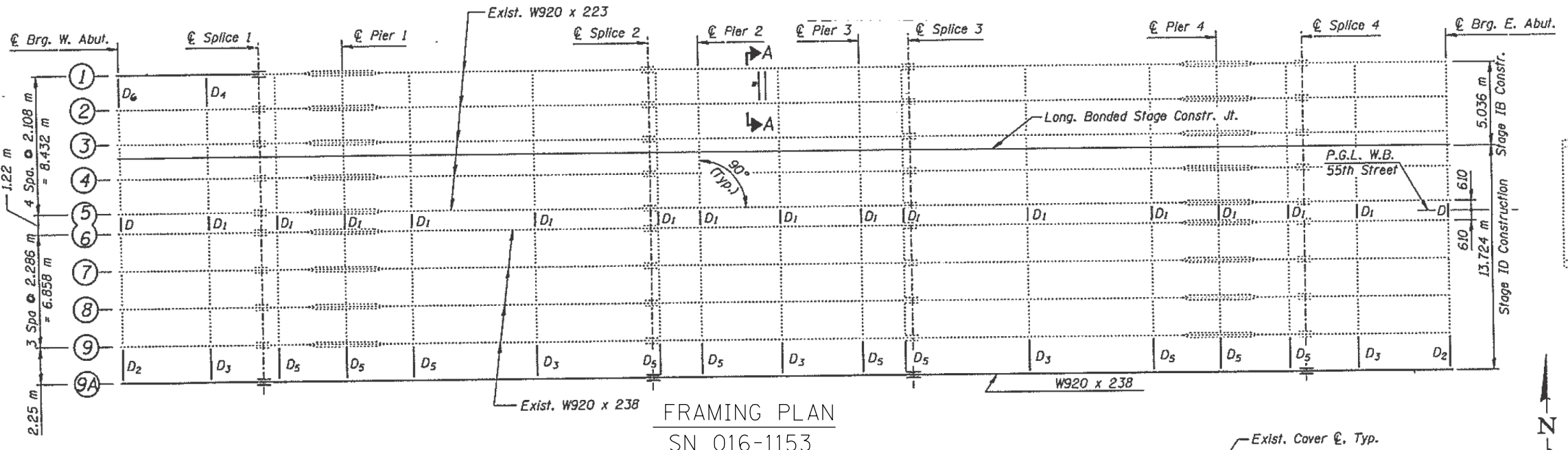
**STATE OF ILLINOIS  
DEPARTMENT OF TRANSPORTATION**

**EXISTING BRIDGE PLAN**  
**55th STREET OVER I-94 (DAN RYAN EXPW) (SN 016-1152; 1153)**

SCALE: SHEET OF SHEETS STA. TO STA.

F.A.I. RTE.	SECTION	COUNTY	TOTAL SHEETS	SHEET NO.
94	2019-157-BP	COOK	12	4
CONTRACT NO. 62K25			ILLINOIS FED. AID PROJECT	





**FOR INFORMATION ONLY**

MODEL: Default  
 FILE: \\p101barom.dva\illinois\gov\PIWDOT\Documents\DOT Office\Drawings\1\Projects\01611520\01611520-01611520.dwg  
 PROJECT: 01611520

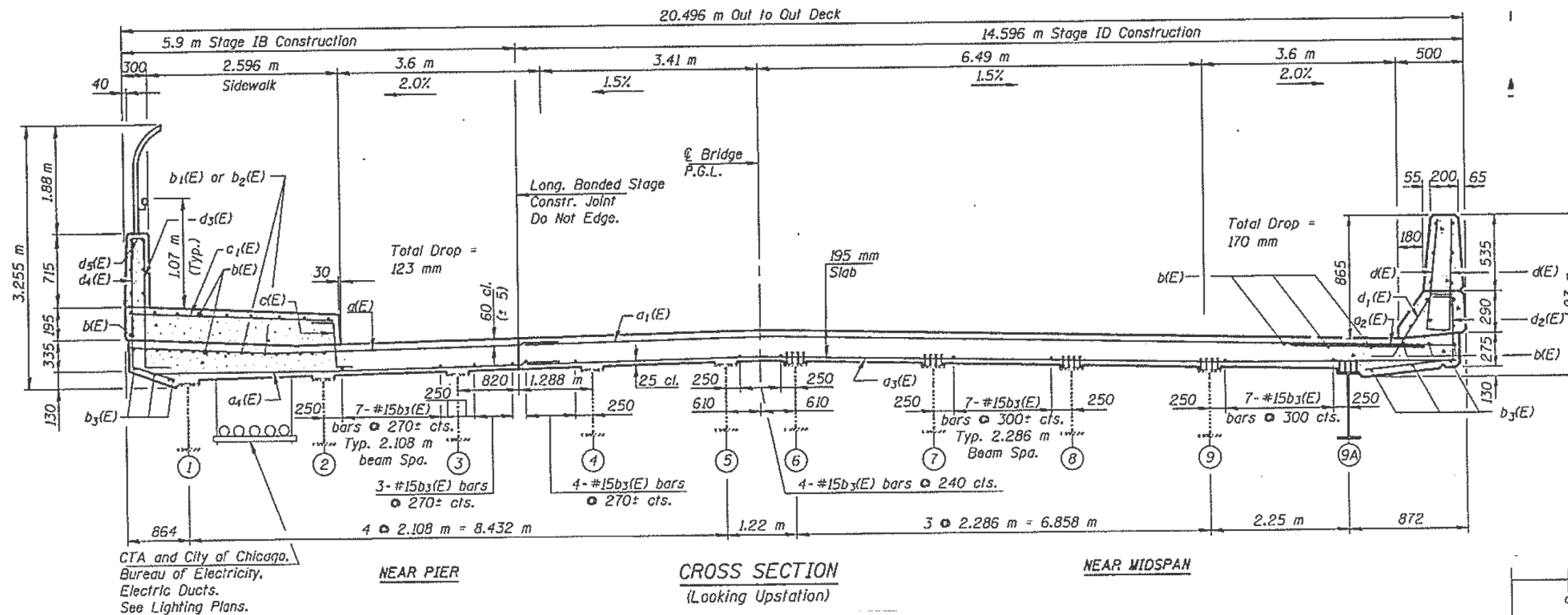
USER NAME = gorenautab	DESIGNED -	REVISED -
	DRAWN -	REVISED -
PLOT SCALE = 100.0000' / in.	CHECKED -	REVISED -
PLOT DATE = 12/13/2019	DATE -	REVISED -

STATE OF ILLINOIS  
DEPARTMENT OF TRANSPORTATION

EXISTING FRAMING PLAN  
55th STREET OVER I-94 (DAN RYAN EXPW) (SN 016-1152; 1153)

F.A.I. RTE.	SECTION	COUNTY	TOTAL SHEETS	SHEET NO.
94	2019-157-BP	COOK	12	5
CONTRACT NO. 62K25				
ILLINOIS FED. AID PROJECT				

SCALE: SHEET OF SHEETS STA. TO STA.

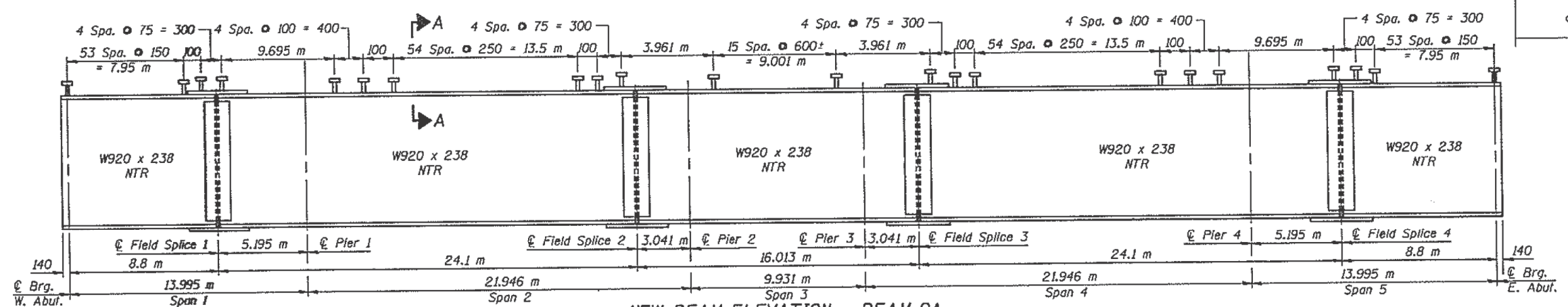


CTA and City of Chicago,  
Bureau of Electricity,  
Electric Ducts.  
See Lighting Plans.

NEAR PIER

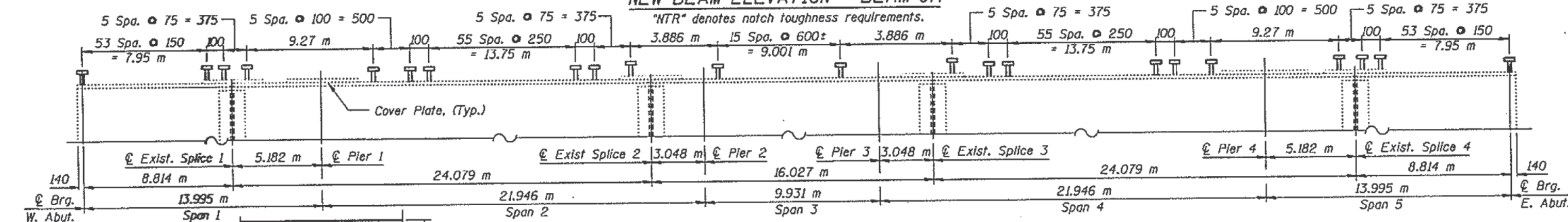
CROSS SECTION  
(Looking Upstation)

NEAR MIDSPAN



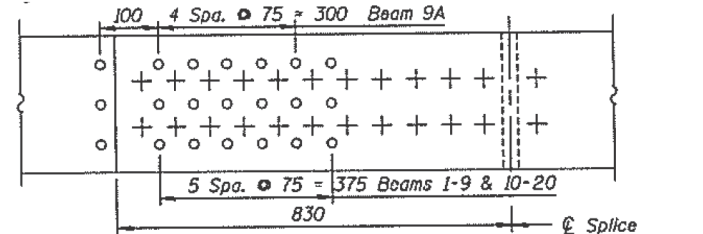
NEW BEAM ELEVATION - BEAM 9A

"NTR" denotes notch toughness requirements.

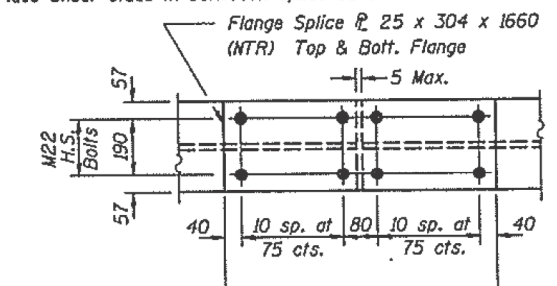


EXISTING BEAM ELEVATION BEAMS 1-9 & 10-20

W920 x 223 or W920 x 238 as noted on Framing Plan on Sheet S18. For existing beams  $f_y = 225$  MPa



PLAN - TOP SPLICE PLATE  
Place Shear studs in between splice bolts.



FIELD SPLICE DETAIL

SECTION A-A

FOR INFORMATION ONLY

MODEL: Default  
FILE: \\hpc\p\pub\baron\ada\illinois\gov\p\pub\DOT\Documents\DOT Office\Drawings\1-Project\131720\Cadd\Drawings\131720-sh-cbr.dgn

USER NAME = gorenautab	DESIGNED -	REVISED -
	DRAWN -	REVISED -
PLOT SCALE = 100.0000' / in.	CHECKED -	REVISED -
PLOT DATE = 12/13/2019	DATE -	REVISED -

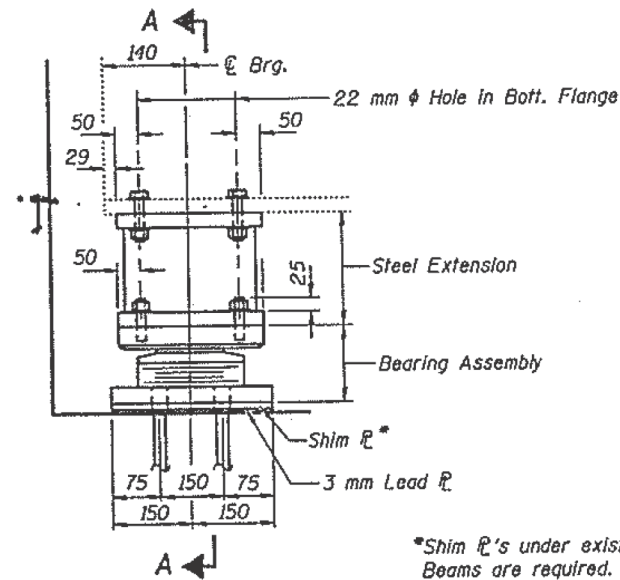
STATE OF ILLINOIS  
DEPARTMENT OF TRANSPORTATION

EXISTING BRIDGE CROSS SECTION. EXISTING BEAM DETAILS  
55th STREET OVER I-94 (DAN RYAN EXPW) (SN 016-1152; 1153)

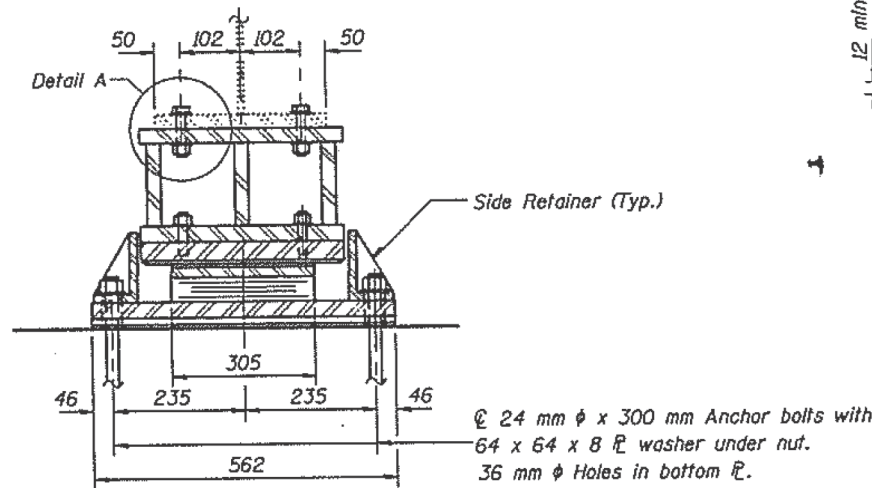
F.A.I. RTE.	SECTION	COUNTY	TOTAL SHEETS	SHEET NO.
94	2019-157-BP	COOK	12	6
CONTRACT NO. 62K25				
ILLINOIS FED. AID PROJECT				

SCALE: SHEET OF SHEETS STA. TO STA.



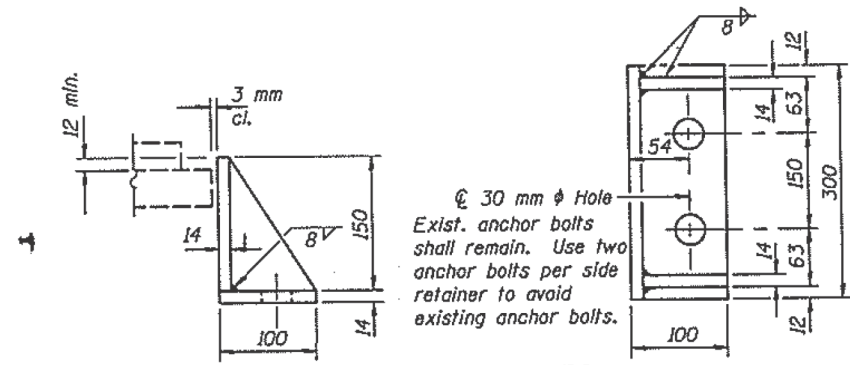


**ELEVATION AT ABUT.**



**SECTION A-A**

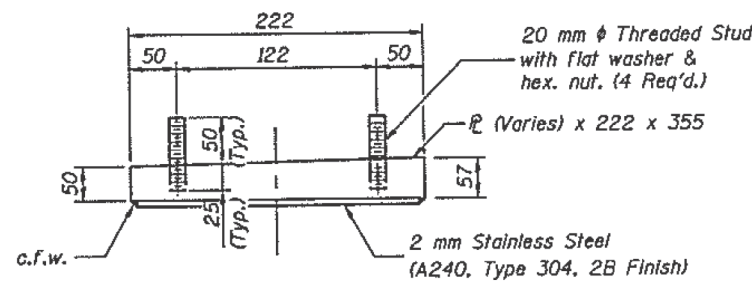
See Sheet S22 for Anchor Bolt installation.



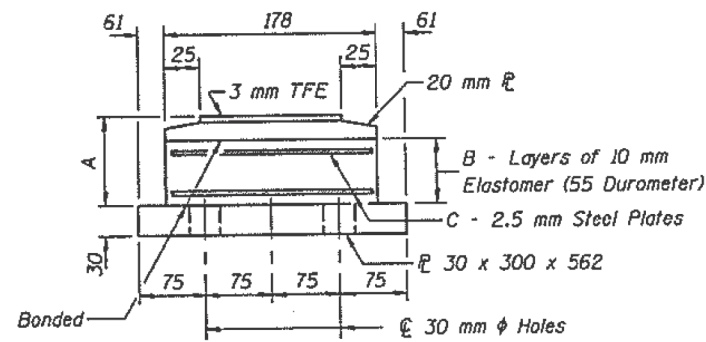
**SIDE RETAINER**

Equivalent rolled angle with stiffeners will be allowed in lieu of welded plates. Weight included with Structural Steel.

**TYPE II TFE ELASTOMERIC EXP. BRG.**

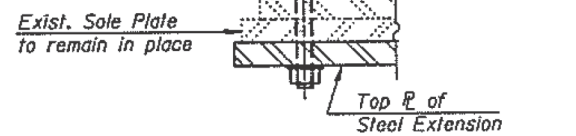


**TOP BEARING ASSEMBLY**

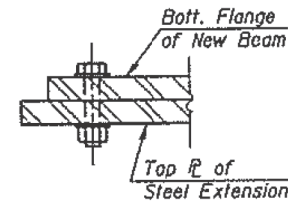


**BOTTOM BEARING ASSEMBLY**

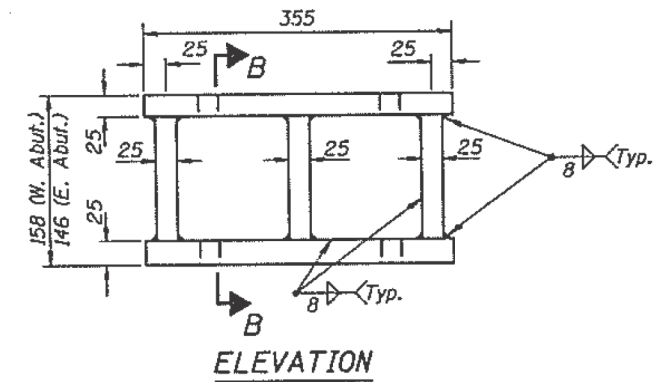
Field drill 22 mm φ oversize hole thru exist. bottom flange and sole plate. Cost included with "Elastomeric Bearing Assembly, Type II."



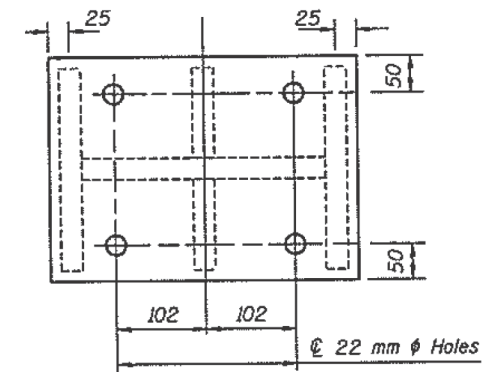
**DETAIL A - EXIST. BEAMS**



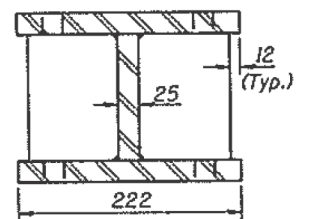
**DETAIL A - NEW BEAMS**



**ELEVATION**



**PLAN**



**SECTION B-B**

**STEEL EXTENSION**

(No. Req'd 42)

**FOR INFORMATION ONLY**

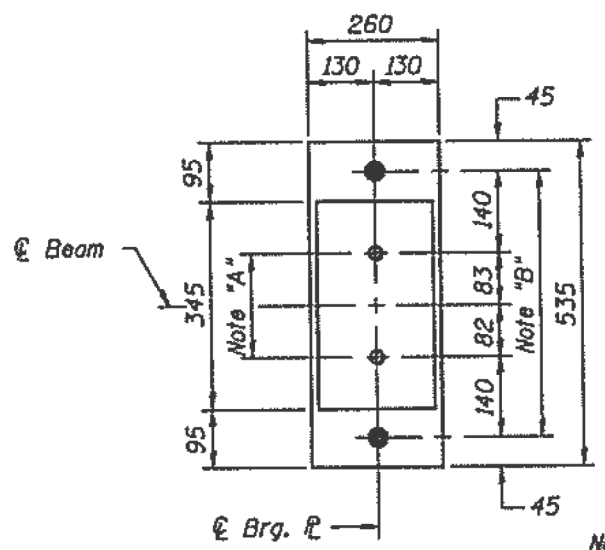
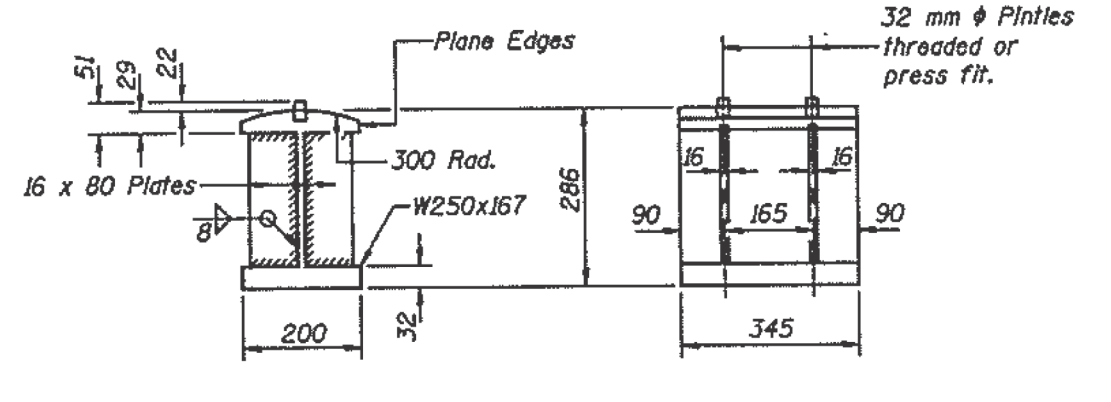
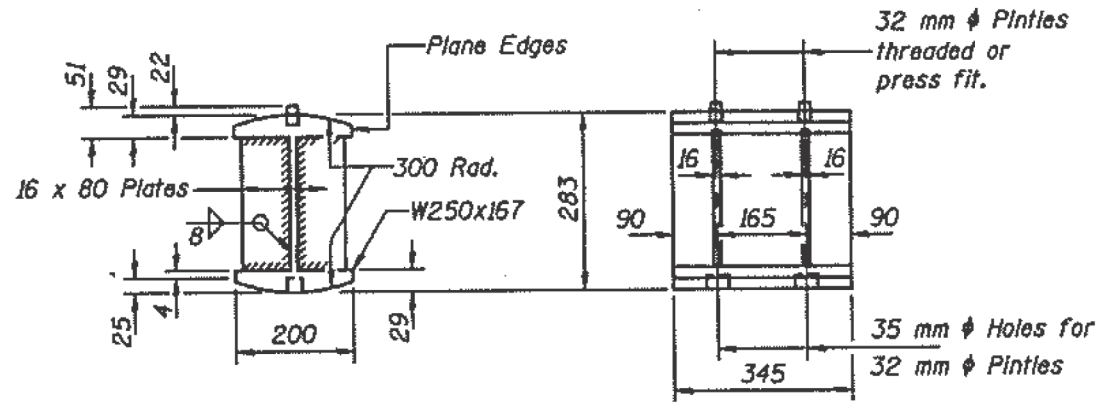
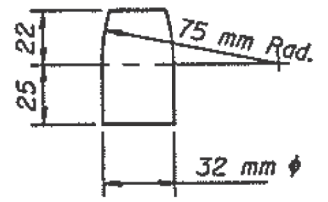
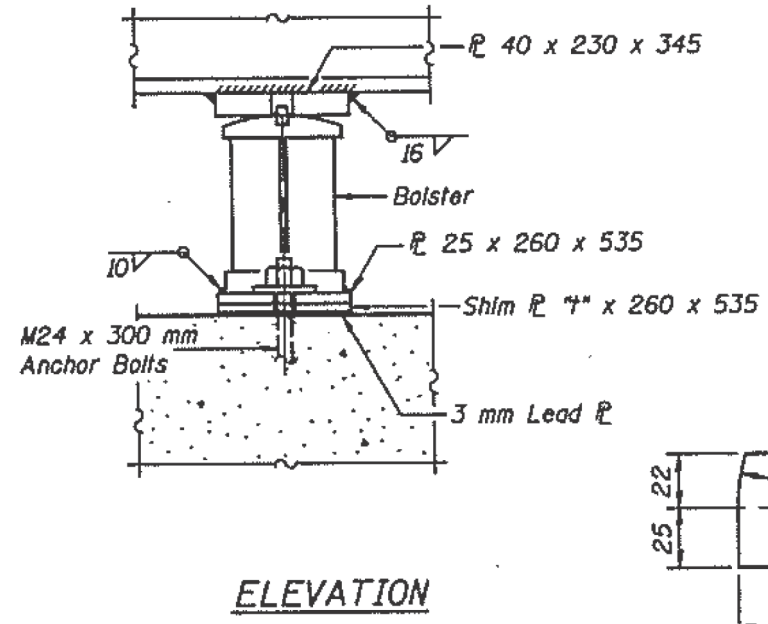
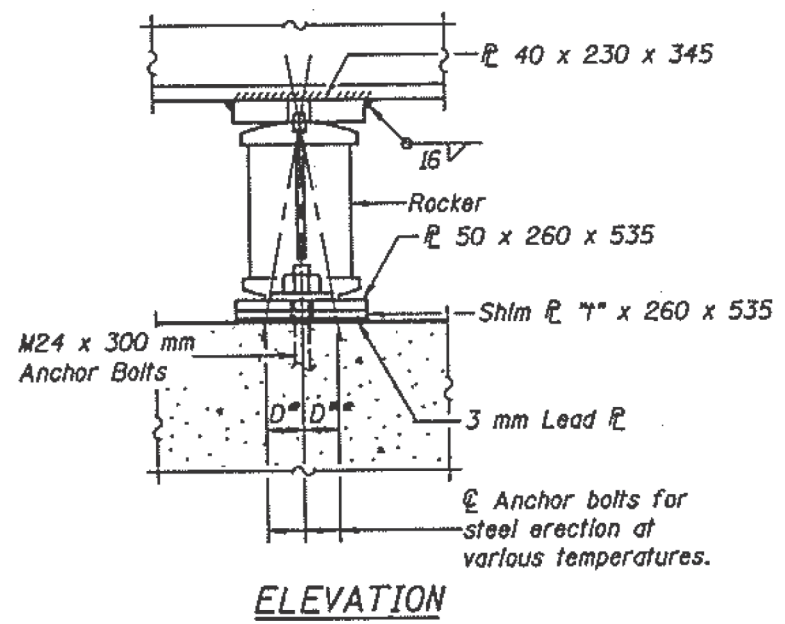
MODEL: Default FILE: Model: P:\pub\baronm.dwg\Illinois.gov\PROJECTS\DOT Documents\IBDOT Office\Drawings\1-Projects\131720\CADD\Drawings\131720-sh-eb-brg.dwg

USER NAME = gorenautab	DESIGNED -	REVISED -
	DRAWN -	REVISED -
PLOT SCALE = 100,0000' / in.	CHECKED -	REVISED -
PLOT DATE = 12/10/2019	DATE -	REVISED -

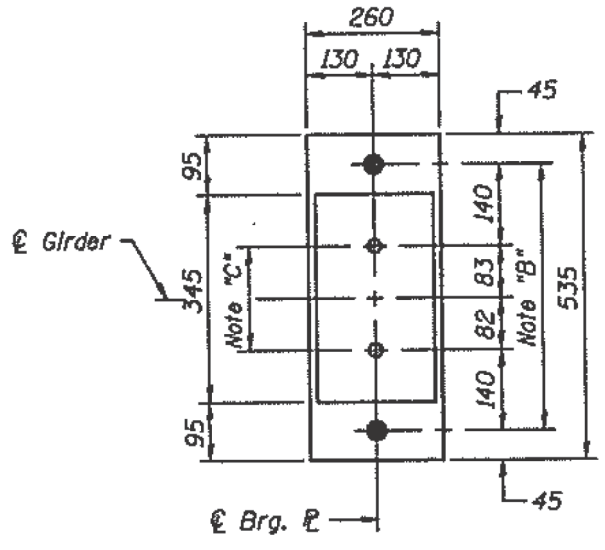
**STATE OF ILLINOIS  
DEPARTMENT OF TRANSPORTATION**

<b>EXISTING BRIDGE BEARING DETAILS</b>	
<b>55th STREET OVER I-94 (DAN RYAN EXPW) (SN 016-1152; 1153)</b>	
SCALE:	SHEET OF SHEETS STA. TO STA.

F.A.I. RTE.	SECTION	COUNTY	TOTAL SHEETS	SHEET NO.
94	2019-157-BP	COOK	12	7
CONTRACT NO. 62K25			ILLINOIS FED. AID PROJECT	



Note "B"  
40 mm  $\phi$  Holes for M24 Anchor Bolts - 8 x 65 x 65  $\phi$  washer under nut.



**BEARING ASSEMBLY DETAILS**

**FOR INFORMATION ONLY**

MODEL: Default  
FILE: h:\m\c\p\pub\baronm.d\at\illinois.gov\PI\DOT\Documents\IBDOT\_Offices\IBDOT\_1\Projects\131720\CADD\Drawings\131720-shr-bear.dgn

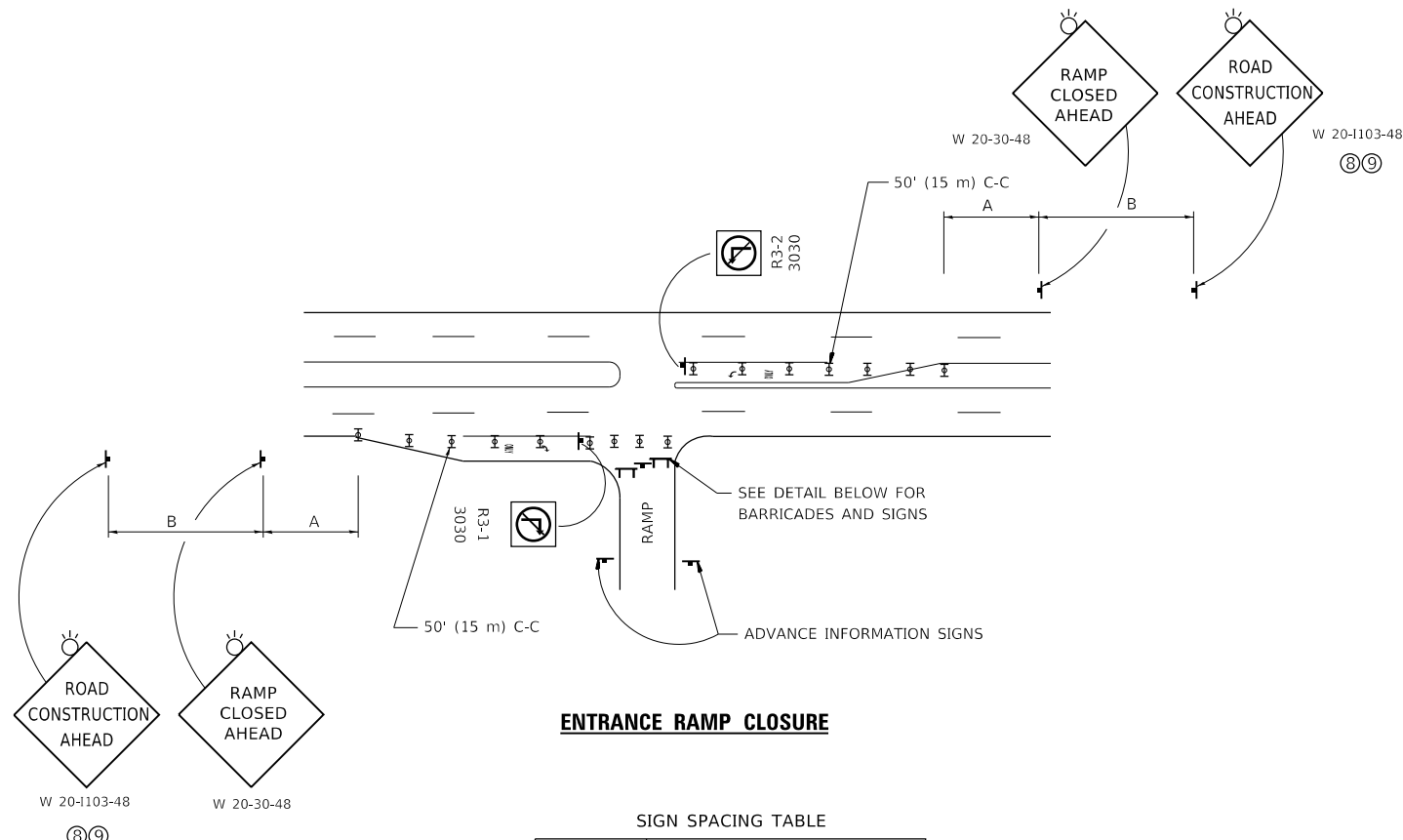
USER NAME = gorenautab	DESIGNED -	REVISED -
	DRAWN -	REVISED -
PLOT SCALE = 100,0000' / in.	CHECKED -	REVISED -
PLOT DATE = 12/10/2019	DATE -	REVISED -

**STATE OF ILLINOIS  
DEPARTMENT OF TRANSPORTATION**

<b>EXISTING BRIDGE BEARING DETAILS</b>	
55th STREET OVER I-94 (DAN RYAN EXPW) (SN 016-1152; 1153)	
SCALE:	SHEET OF SHEETS STA. TO STA.

F.A.I. RTE.	SECTION	COUNTY	TOTAL SHEETS	SHEET NO.
94	2019-157-BP	COOK	12	8
CONTRACT NO. 62K25				
ILLINOIS FED. AID PROJECT				



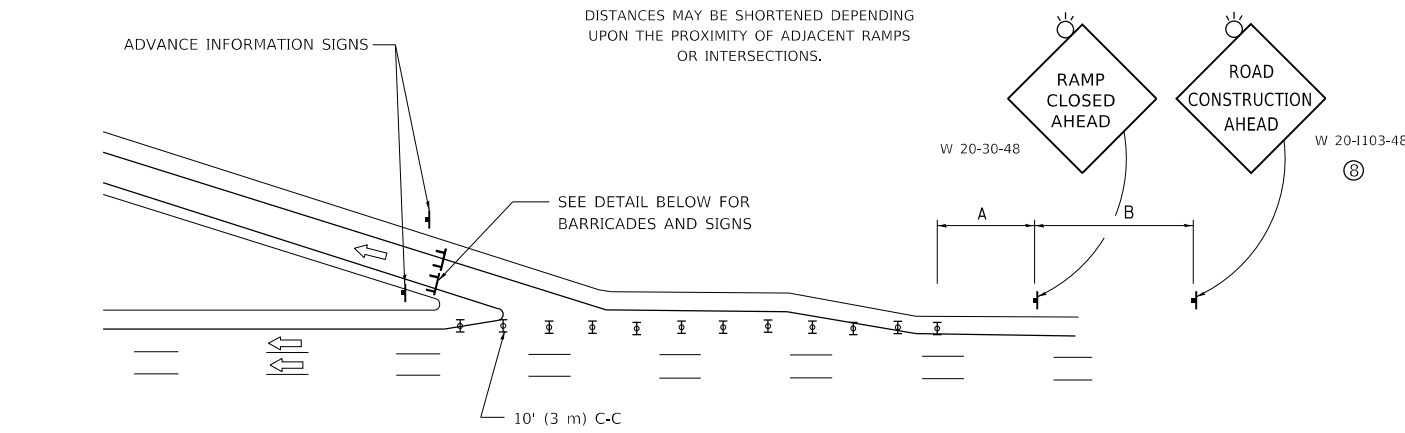


**ENTRANCE RAMP CLOSURE**

SIGN SPACING TABLE

FACILITY	DISTANCE BETWEEN SIGNS	
	A	B
EXPRESSWAY >24 HOURS	1000' (300 m)	1500' (450 m)
EXPRESSWAY ≤24 HOURS	500' (150 m)	500' (150 m)
ARTERIAL 55 MPH	500' (150 m)	500' (150 m)
ARTERIAL 50-45 MPH	350' (100 m)	350' (100 m)
ARTERIAL <45 MPH	200' (60 m)	200' (60 m)

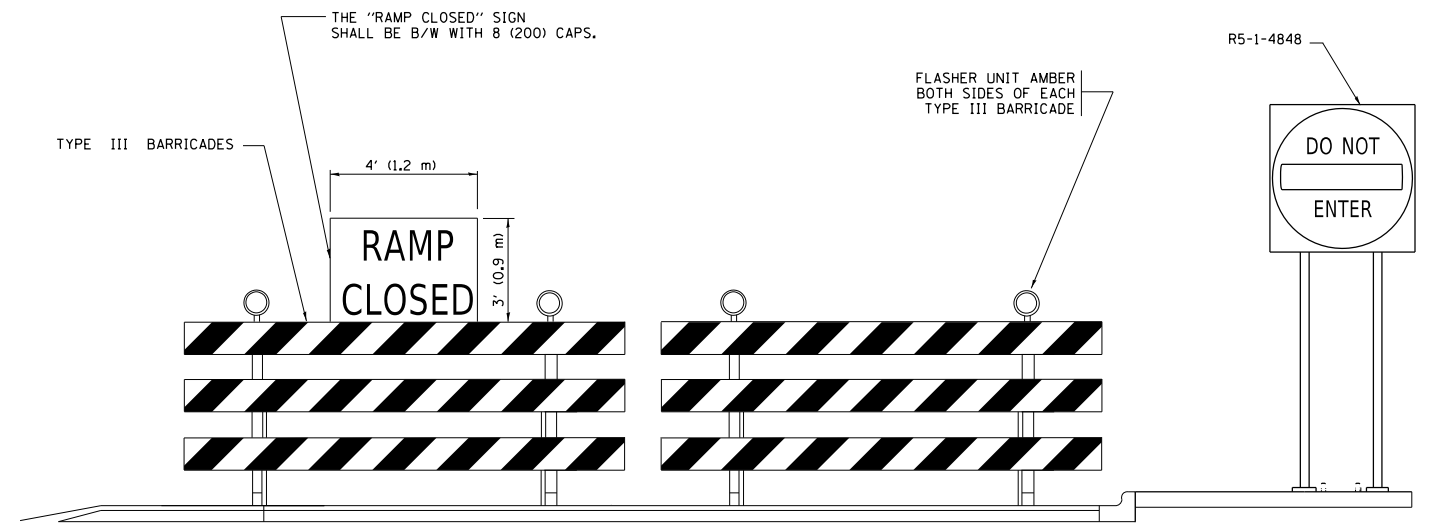
DISTANCES MAY BE SHORTENED DEPENDING UPON THE PROXIMITY OF ADJACENT RAMPS OR INTERSECTIONS.



**EXIT RAMP CLOSURE**

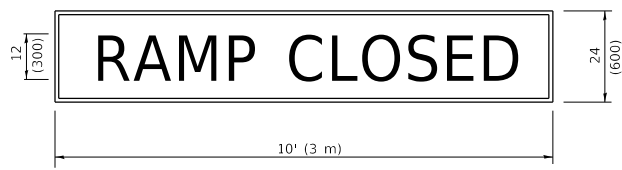
**SYMBOLS**

- ▬ TYPE II BARRICADE OR DRUM
- ▬ TYPE III BARRICADE WITH 2 FLASHING LIGHTS



**DETAIL FOR REQUIRED BARRICADES & SIGNS**

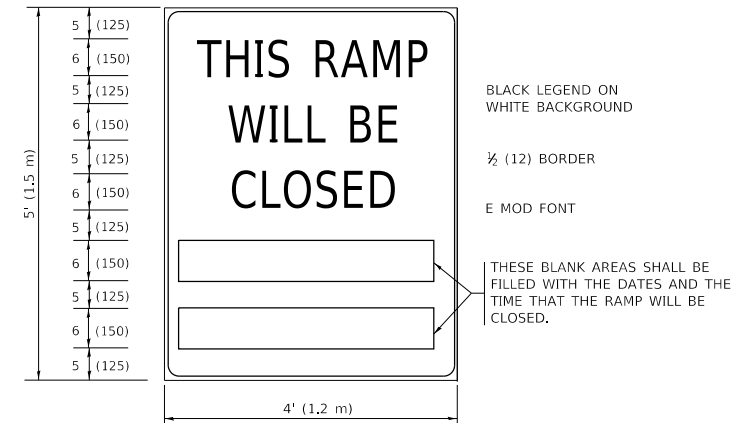
**RAMP CLOSURE ADVANCE WARNING SIGN**



BLACK LEGEND ON ORANGE BACKGROUND MOUNTED DIAGONALLY  
E MOD FONT  
1 (25) BORDER

THESE SIGNS ARE REQUIRED ON ALL THE EXIT GUIDE SIGNS FOR EXIT RAMPS THAT WILL BE CLOSED FOR MORE THAN FOUR (4) CONSECUTIVE DAYS.

**RAMP CLOSURE ADVANCE INFORMATION SIGN**



THESE SIGNS ARE REQUIRED ON BOTH SIDES OF THE RAMP, MINIMUM OF 1 WEEK IN ADVANCE OF THE CLOSURE.  
THESE SIGNS SHALL BE FABRICATED AND PAID FOR ACCORDING TO THE TEMPORARY INFORMATION SIGNING SPECIAL PROVISION

**GENERAL NOTES:**

- ① CONES MAY BE SUBSTITUTED FOR DRUMS OR TYPE II BARRICADES DURING DAY OPERATIONS. CONES SHALL BE A MINIMUM OF 28 (700) HIGH.
- ② VERTICAL BARRICADES SHALL NOT BE USED FOR RAMP CLOSURES.
- ③ A FLAGGER SHALL BE POSITIONED AT EACH CLOSED RAMP THAT IS OPEN TO CONSTRUCTION VEHICLES, PRECEDED BY A W20-7 FLAGGER WARNING SIGN.
- ④ ALL ROUTE MARKERS AND TRAILBLAZER ASSEMBLIES WHICH DIRECT MOTORISTS TO A CLOSED ENTRANCE RAMP SHALL BE COVERED WHEN THE RAMP IS CLOSED FOR MORE THAN FOUR (4) DAYS.
- ⑤ THE SIGNING AND BARRICADING WHICH IS REQUIRED BY THIS DETAIL SHALL BE INCLUDED IN THE COST OF TRAFFIC CONTROL AND PROTECTION (EXPRESSWAYS).
- ⑥ AUTHORIZATION FROM THE DISTRICT'S BUREAU OF TRAFFIC IS REQUIRED FOR ALL RAMP CLOSURES.
- ⑦ THE RAMP CLOSURE ADVANCE INFORMATION SIGNS SHALL BE ERECTED IF THE CLOSURE TIME EXCEEDS TWENTY-FOUR (24) HOURS. ADDITIONAL ADVANCE WARNING SIGNS ON EXIT GUIDE SIGNING WILL BE REQUIRED FOR EXIT RAMP CLOSURES THAT EXCEED FOUR (4) DAYS IN LENGTH.
- ⑧ ROAD CONSTRUCTION AHEAD SIGNS MAY BE OMITTED WHEN THIS DETAIL IS USED IN CONJUNCTION WITH OTHER TRAFFIC CONTROL THAT ALREADY INCLUDES A ROAD CONSTRUCTION AHEAD SIGN.
- ⑨ ARTERIAL ROAD CONSTRUCTION AHEAD SIGNS SHALL BE INSTALLED ON THE LEFT SIDE OF TRAFFIC IF THE MEDIAN IS MORE THAN 10 FT WIDE.

ALL DIMENSIONS ARE IN INCHES (MILLIMETERS) UNLESS OTHERWISE SHOWN.

MODEL: Default  
FILE: \\nashville-prod\pub\baron\m.d.a.\illinois.gov\PI\DOT\Documents\DOT - Offices\District 1\Projects\131720\CaddData\Design\DRS\4.dgn

USER NAME = gorenautab	DESIGNED - D.W.S.	REVISED - S.P.B._01-07
PLOT SCALE = 100.0000' / in.	CHECKED -	REVISED - S.P.B._12-09
PLOT DATE = 12/13/2019	DATE - 02-83	REVISED - M.D._06-13
		REVISED - M.D._01-18

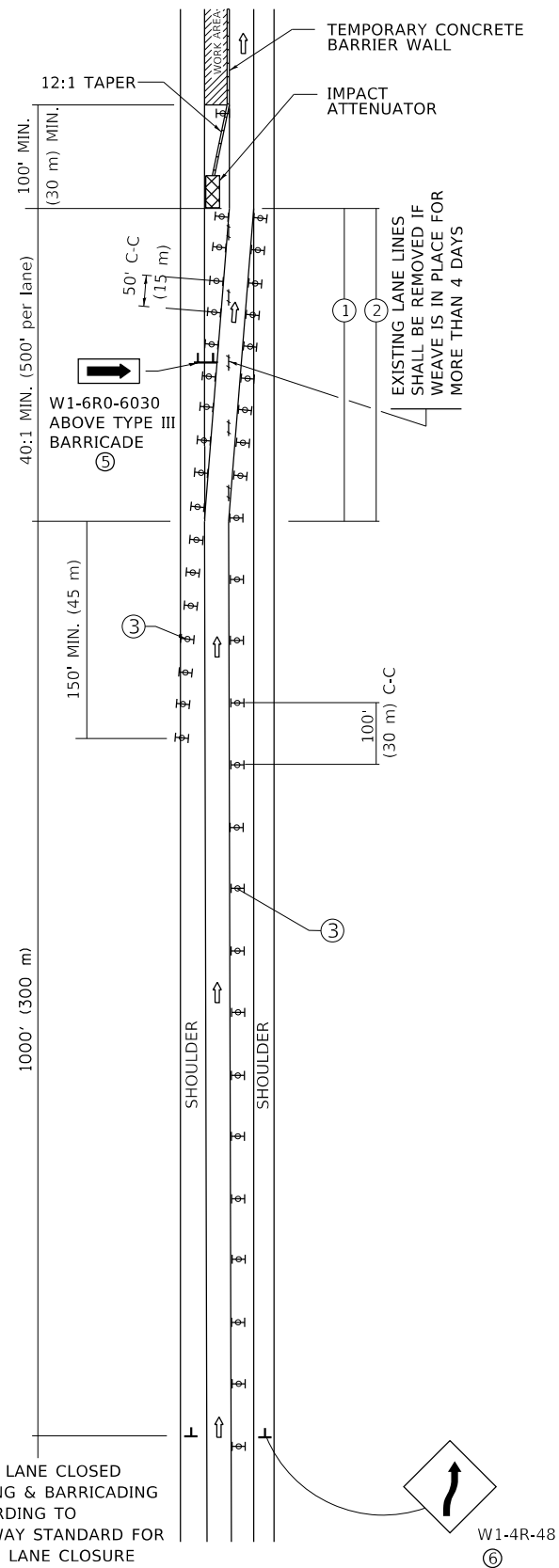
**STATE OF ILLINOIS  
DEPARTMENT OF TRANSPORTATION**

**ENTRANCE\_AND\_EXIT\_RAMP  
CLOSURE\_DETAILS**

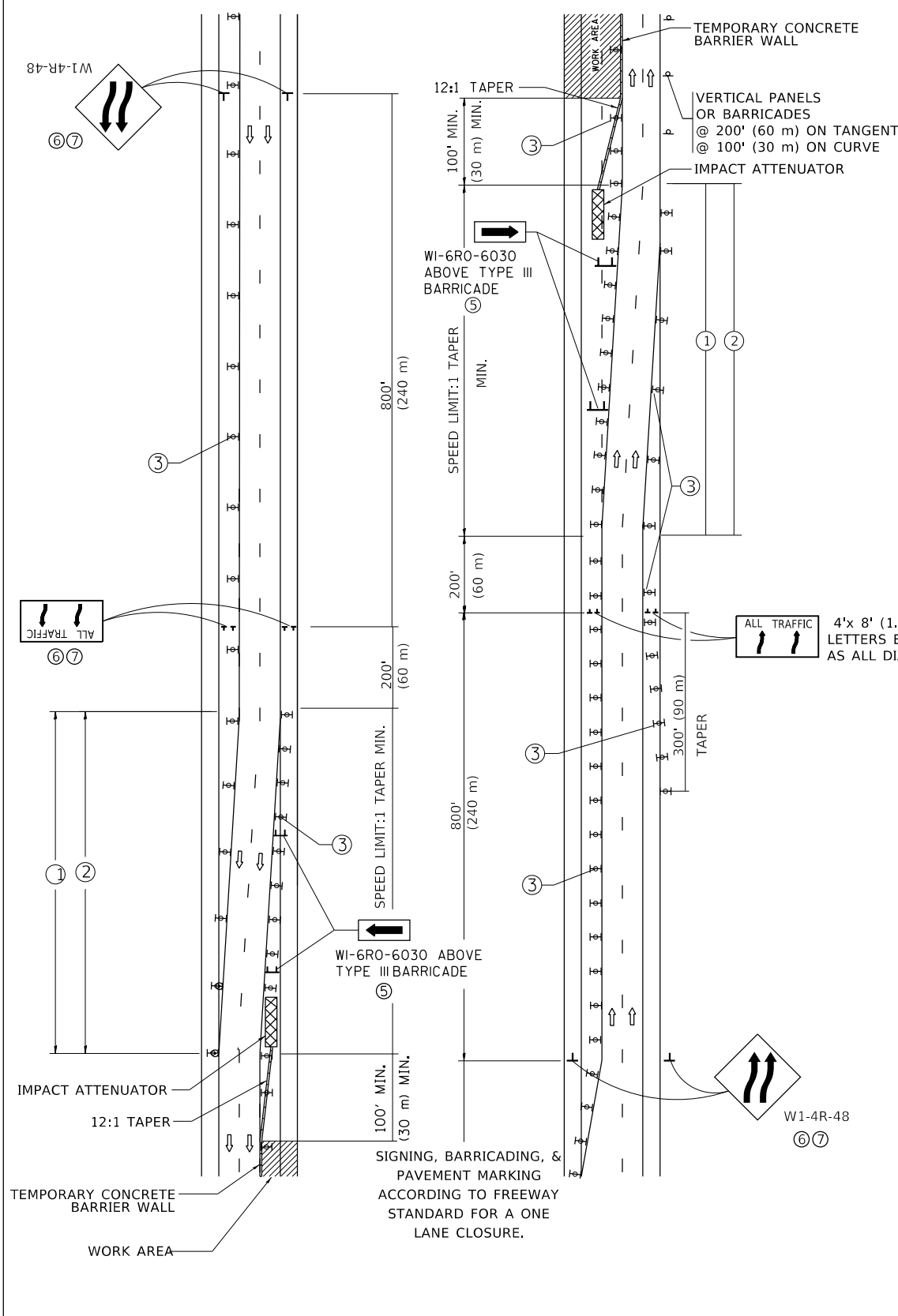
SCALE: NONE SHEET 1 OF 1 SHEETS STA. TO STA.

F.A.I. RTE. 94	SECTION 2019-157-BP	COUNTY COOK	TOTAL SHEETS 12	SHEET NO. 9
<b>TC-08</b>		CONTRACT NO. 62K25		
ILLINOIS FED. AID PROJECT				

# SINGLE LANE WEAVE

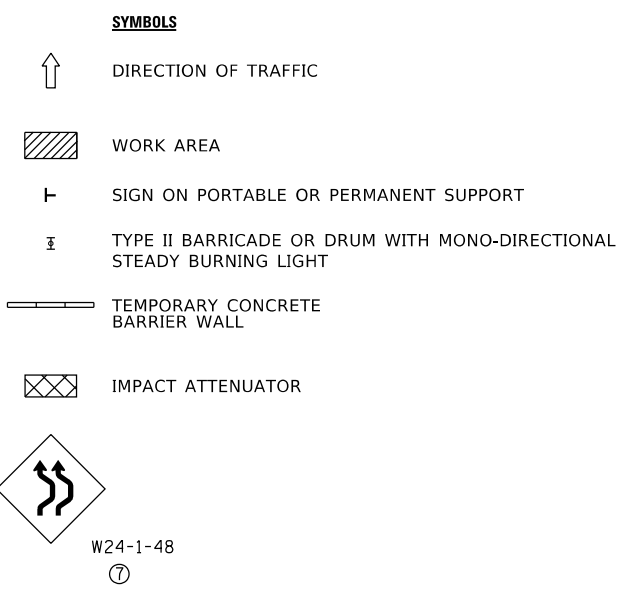


# MULTI-LANE WEAVE



### GENERAL NOTES:

- ① EXISTING CONFLICTING PAVEMENT MARKING LINES SHALL BE REMOVED. PAVEMENT MARKING REMOVAL SHALL NOT BE REQUIRED FOR SINGLE LANE WEAVES UNDER 4 DAYS IN DURATION.
- ② CONTINUOUS REFLECTIVE TEMPORARY PAVEMENT MARKING TAPE SHALL BE PLACED THROUGHOUT THE TAPER AND FOR 300' (90 m) ALONG SIDE THE WORK AREA WHERE THE CLOSURE TIME IS GREATER THAN FOURTEEN DAYS. THE LEFT EDGE LINE SHALL BE YELLOW AND THE RIGHT EDGE LINE SHALL BE WHITE. FOR MULTI-LANE WEAVES LANE LINES SHALL BE 5 INCH, 10'-30' (3 m-9 m) SKIP DASH, WHITE.
- ③ PLASTIC DRUMS WITH STEADY BURN LIGHTS AT 50' (15 m) C-C SPACING IN TAPERS AND 100' (30 m) C-C SPACING IN TANGENTS.
- ④ ALL SIGNS SHALL BE POST MOUNTED IF THE CLOSURE TIME EXCEEDS FOUR DAYS.
- ⑤ TYPE III BARRICADES MAY BE OMITTED FOR SINGLE-LANE WEAVES UNDER 24-HOURS IN DURATION. W1-6 SIGNS WILL STILL BE REQUIRED. IF THE WIDTH OF OFFSET IS LESS THAN 6' THEN THE TYPE III BARRICADE WITH ATTACHED ARROW SIGN PANEL CAN BE ELIMINATED IN THE TAPER AREAS.
- ⑥ WHEN THE LENGTH OF THE SHIFTED SEGMENT (DISTANCE BETWEEN WEAVE POINTS) IS LESS THAN 1500', DOUBLE REVERSE CURVE SIGNS (W24-1) SHOULD BE USED INSTEAD OF THE REVERSE CURVE (W1-4) SIGNS. ARROWS ON THE 4'X8' "ALL TRAFFIC" SIGNS SHALL BE THE SAME SHAPE.
- ⑦ THE NUMBER OF ARROWS ON THESE SIGNS SHALL MATCH THE NUMBER OF LANES OPEN TO TRAFFIC.



ALL DIMENSIONS ARE IN INCHES (MILLIMETERS) UNLESS OTHERWISE SHOWN

MODEL: Default  
FILE: \\nashville.pva\pub\baronm.d\at\links\gov\PIWDOT\Documents\DOT\_Offices\District\_1\Projects\131720\CaddData\Design\DES.dgn

USER NAME = gorenautab	DESIGNED - D.W.S.	REVISED - J.A.F. 02-06
	DRAWN -	REVISED - S.P.B. 01-07
PLOT SCALE = 100.0000' / in.	CHECKED -	REVISED - S.P.B. 12-09
PLOT DATE = 12/13/2019	DATE - 02-87	REVISED - M.D. 06-13

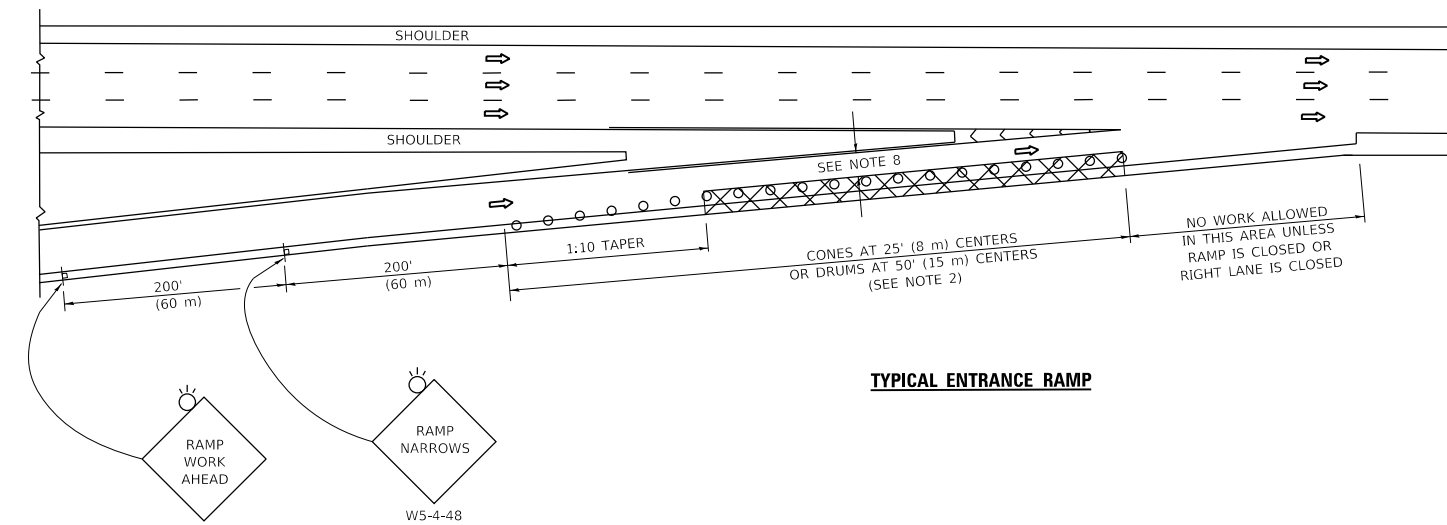
**STATE OF ILLINOIS  
DEPARTMENT OF TRANSPORTATION**

**TRAFFIC CONTROL DETAILS FOR  
FREEWAY SINGLE & MULTI-LANE WEAVE**

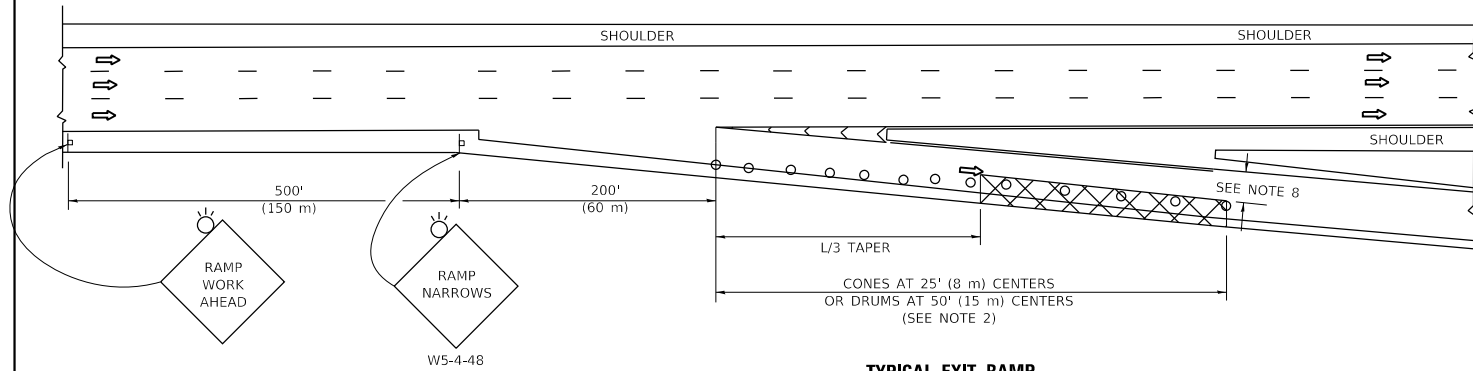
SCALE: NONE SHEET 1 OF 1 SHEETS STA. TO STA.

F.A.I. RTE.	SECTION	COUNTY	TOTAL SHEETS	SHEET NO.
94	2019-157-BP	COOK	12	10
TC-09		CONTRACT NO. 62K25		
ILLINOIS FED. AID PROJECT				

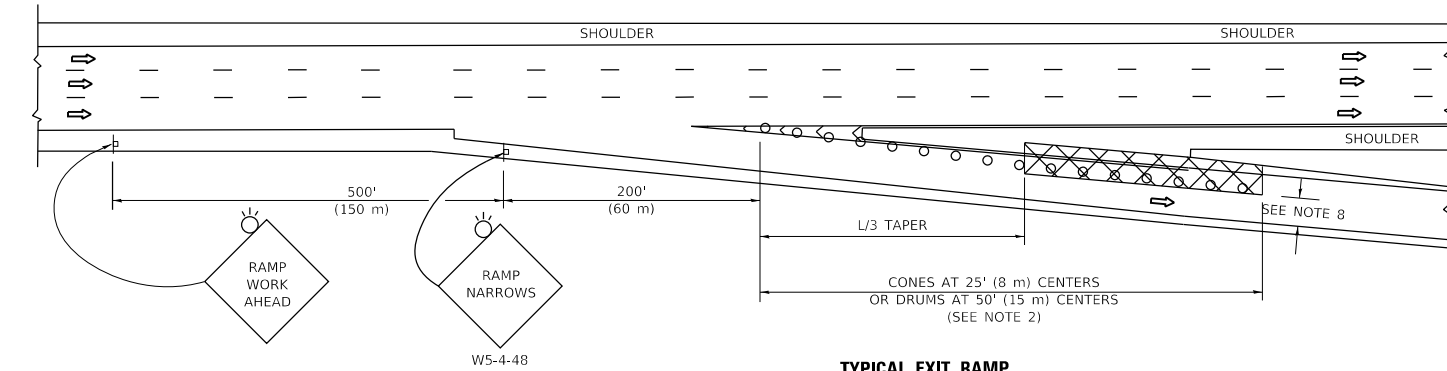
**PARTIAL RAMP CLOSURE DETAILS**



**TYPICAL ENTRANCE RAMP**



**TYPICAL EXIT RAMP**



**TYPICAL EXIT RAMP**

**SYMBOLS**

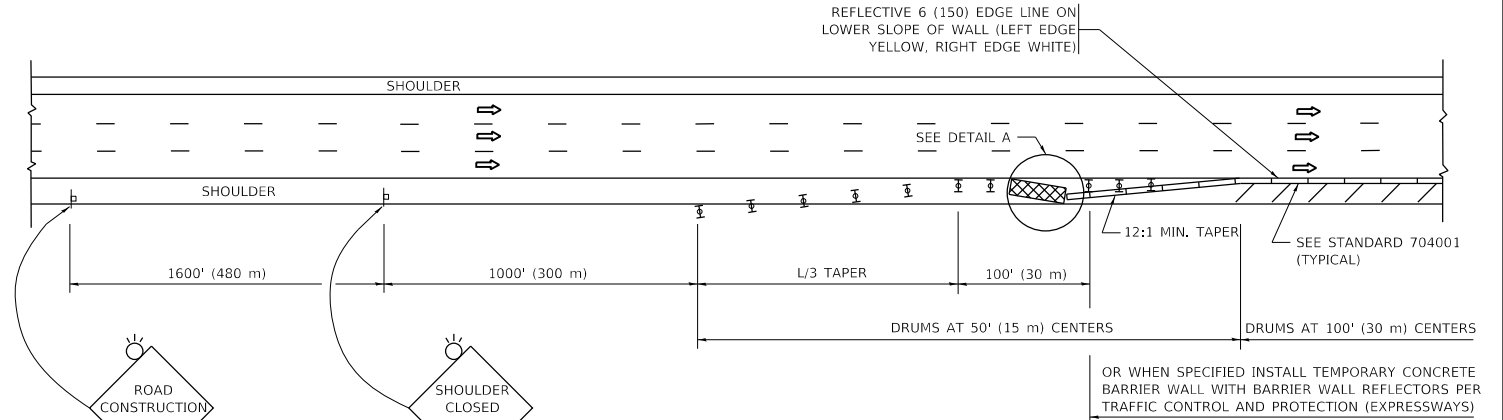
- ACTIVE WORK AREA
- SIGN ON PORTABLE OR PERMANENT SUPPORT
- FLAGGER WITH CONTROL SIGN
- TYPE II BARRICADE OR DRUM
- CONE, DRUM OR BARRICADE
- IMPACT ATTENUATOR OF TYPE AND TEST LEVEL SPECIFIED

**GENERAL NOTES:**

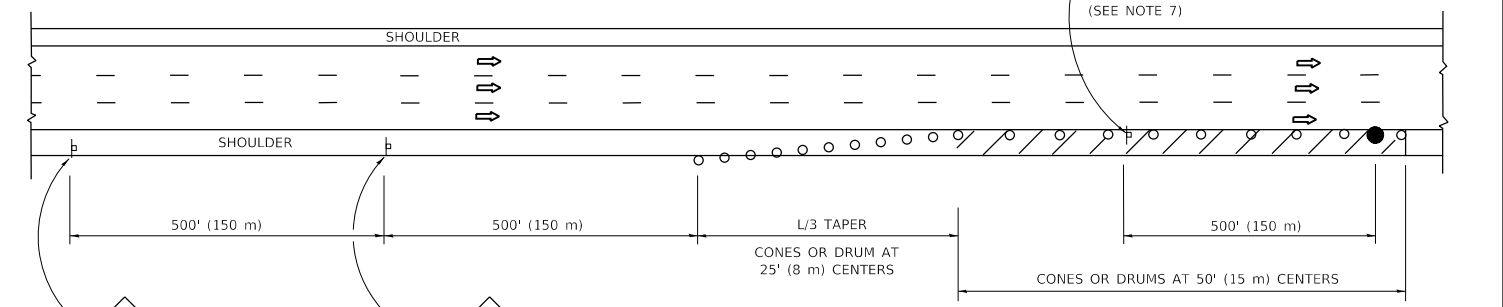
- THE "L" DISTANCE EQUALS:  

SPEED LIMIT	FORMULAS
45 mph (80 km/h)	METRIC ENGLISH
OR GREATER:	$L=0.65(WXS)$ $L=(WXS)$
	W = WIDTH OF OFFSET IN FEET (METERS)
	S = NORMAL POSTED SPEED MPH (KM/H)
- TYPE II BARRICADES OR DRUMS ARE REQUIRED FOR ALL NIGHTTIME CLOSURES. TYPE II BARRICADES OR DRUMS WITH MONODIRECTIONAL STEADY BURN LIGHTS ARE REQUIRED FOR DELINEATING OBSTACLES, EXCAVATIONS, OR HAZARDS EXCEEDING 100 FT (30m) IN LENGTH AT NIGHT.
- ALL SIGNS SHALL BE POST MOUNTED IF THE CLOSURE TIME EXCEEDS FOUR DAYS.
- FLASHING LIGHTS SHALL BE USED DURING THE HOURS OF DARKNESS AND SHALL BE INSTALLED ABOVE THE FIRST TWO SETS OF SIGNS.

**SHOULDER CLOSURE DETAILS**



**PERMANENT SHOULDER CLOSURE**



**DAYTIME SHOULDER CLOSURE**

THIS DETAIL IS USED WHERE:  
 1. VEHICLES, EQUIPMENT, WORKERS OR THEIR ACTIVITIES ENCR OACH IN AN AREA CLOSER THAN 15' (4.5 m) TO THE EDGE OF PAVEMENT FOR A PERIOD IN EXCESS OF 15 MINUTES.



**DETAIL "A"  
IMPACT ATTENUATOR, TEMPORARY  
(SEE NOTE 5)**

- THE IMPACT ATTENUATOR, TEMPORARY IS NOT REQUIRED WHEN THE TEMPORARY CONCRETE BARRIER WALL IS PROTECTED BY OR IS TIED INTO THE EXISTING GUARDRAIL. IF OFFSET IS LESS THAN 5 FEET USE NARROW USE TYPE DEVICE TO MEET NCHRP350/MASH.
- AUTHORIZATION FROM THE DISTRICT'S BUREAU OF TRAFFIC IS REQUIRED FOR ALL FREEWAY CLOSURES.
- THE FLAGGER AND FLAGGER SIGN ARE REQUIRED AT THE ABOVE WORK SITES WHEN:
  - FOUR OR MORE WORK VEHICLES ENTER THE TRAFFIC LANES IN A ONE HOUR PERIOD.
  - THE WORK AVTIVITY REQUIRES FREQUENT ENCR OACHMENT INTO THE LANE OPEN TO TRAFFIC.
 THE FLAGGER SHALL BE STATIONED APPROXIMATELY 100' (30 m) TO 200' (60 m) IN ADVANCE OF THE WORKERS.
- 12' MIN. WIDTH TANGENT SECTION  
16' MIN. WIDTH CURVE SECTION.

ALL DIMENSIONS ARE IN INCHES (MILLIMETERS) UNLESS OTHERWISE SHOWN.

MODEL: Default  
FILE: \\nchrp\pub\pubroom\dat\illinois\gov\PIWDOT\Documents\DOT\_Offices\Distctc\_1\Projects\4131720\CaddData\Design\DES\4.dgn

USER NAME = gorenautab	DESIGNED -	REVISED - S.P.B. 01-07
	DRAWN - D.W.S.	REVISED - S.P.B. 12-09
PLOT SCALE = 100.0000' / in.	CHECKED -	REVISED - M.D. 06-13
PLOT DATE = 12/13/2019	DATE - 11-96	REVISED - M.D. 01-18

**STATE OF ILLINOIS  
DEPARTMENT OF TRANSPORTATION**

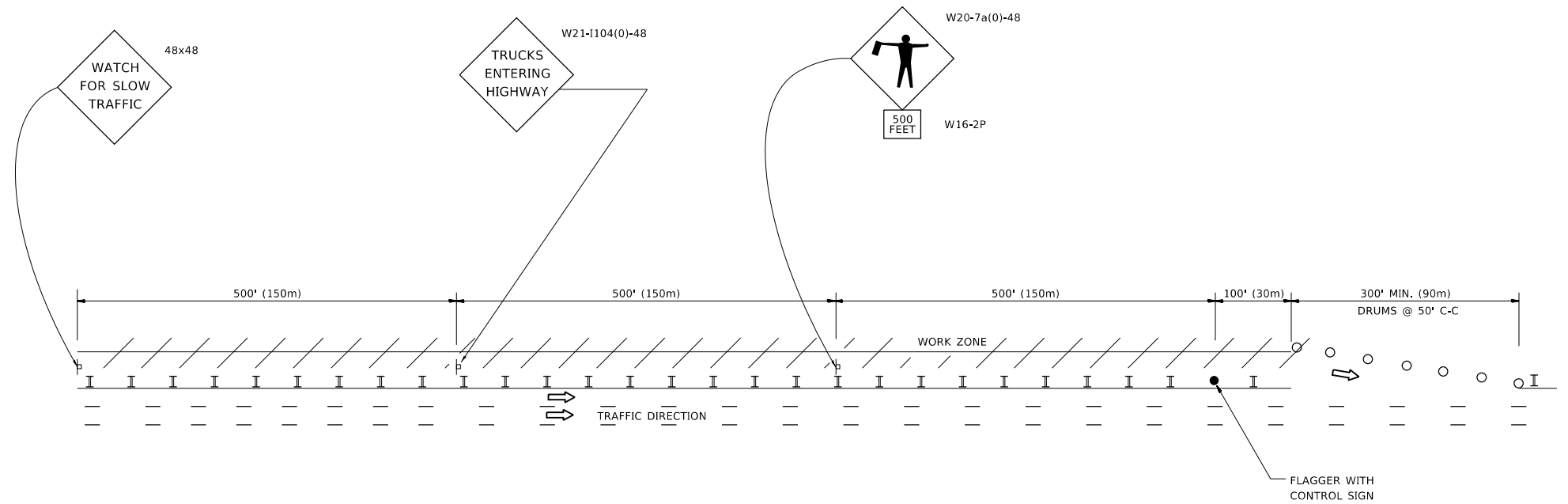
**TRAFFIC CONTROL DETAILS FOR FREEWAY  
SHOULDER CLOSURES AND PARTIAL RAMP CLOSURES**

SCALE: NONE SHEET 1 OF 1 SHEETS STA. TO STA.

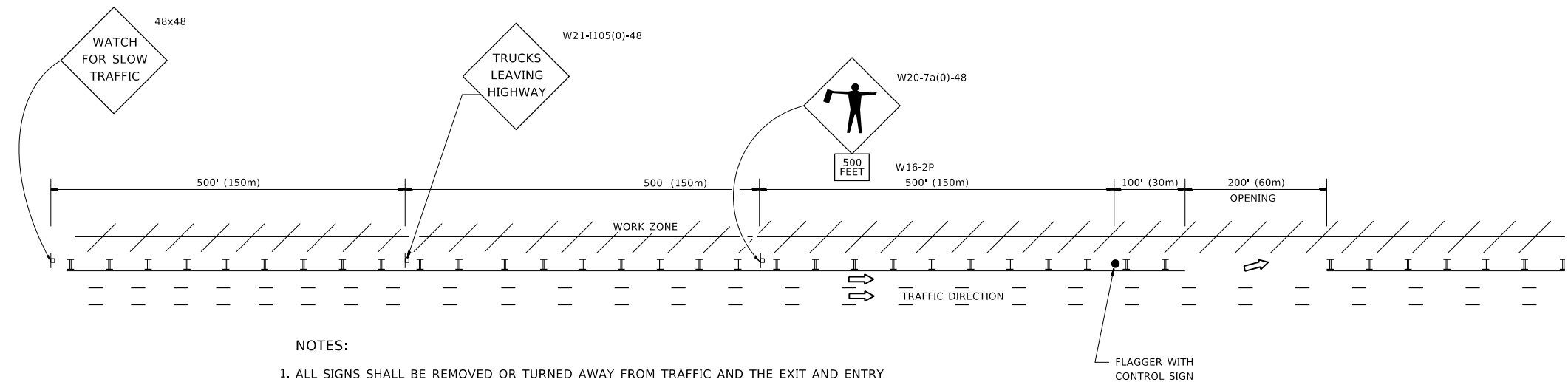
F.A.I. RTE.	SECTION	COUNTY	TOTAL SHEETS	SHEET NO.
94	2019-157-BP	COOK	12	11
<b>TC-17</b>		CONTRACT NO. 62K25		
ILLINOIS		FED. AID PROJECT		

## SIGNING FOR FLAGGING OPERATIONS AT WORK ZONE OPENINGS

### WORK ZONE EXIT OPENING



### WORK ZONE ENTRY OPENING



**NOTES:**

1. ALL SIGNS SHALL BE REMOVED OR TURNED AWAY FROM TRAFFIC AND THE EXIT AND ENTRY OPENINGS SHALL BE CLOSED WHEN THE FLAGGING OPERATION CEASES. NON OPERATING EQUIPMENT SHALL COMPLY WITH ARTICLE 701.11
2. WORK ZONE OPENINGS SHALL BE A MINIMUM OF ONE HALF MILE APART AND A MINIMUM OF ONE QUARTER MILE FROM ALL ENTRANCE AND EXIT RAMP.
3. EXITING THE WORK ZONE AT ANY PLACE OTHER THAN AT A WORK ZONE EXIT OPENING WILL BE PROHIBITED.
4. ALL VEHICLES SHALL ENTER THE WORK ZONE AT ENTRY OPENINGS, USING THEIR TURN SIGNALS TO WARN MOTORISTS
5. FLAGGERS SHALL NOT STOP TRAFFIC OR DIRECT TRAFFIC INTO AN ADJACENT LANE.

ALL DIMENSIONS ARE IN INCHES (MILLIMETERS)  
UNLESS OTHERWISE SHOWN

MODEL: Default  
FILE: \\nas01.cpe.psu.edu\pub\haronom.dar\illinois.gov\PWIDOT\Documents\DOT\_Offices\Director\_1\Projects\131720\CADD\Design\Design\DES.dgn

USER NAME = gorenautab	DESIGNED -	REVISED - J.A.F. 02-06
	DRAWN -	REVISED - S.P.B. 01-07
PLOT SCALE = 100.0000' / in.	CHECKED -	REVISED - S.P.B. 12-09
PLOT DATE = 12/13/2019	DATE -	REVISED - M.D.06-13

**STATE OF ILLINOIS  
DEPARTMENT OF TRANSPORTATION**

**FREEWAY /EXPRESSWAY SIGNING FOR FLAGGING OPERATIONS  
AT WORK ZONE OPENINGS ON FREEWAYS /EXPRESSWAYS**

SCALE: NONE    SHEET 1 OF 1 SHEETS    STA.                      TO STA.

F.A.I. RTE.	SECTION	COUNTY	TOTAL SHEETS	SHEET NO.
94	2019-157-BP	COOK	12	12
<b>TC-18</b>			CONTRACT NO. 62K25	
ILLINOIS FED. AID PROJECT				