

038

03-06-2020 LETTING ITEM 038

STATE OF ILLINOIS
DEPARTMENT OF TRANSPORTATION

| | | | | |
|-------------------|------------------------|---------------------|--------------------|----------------|
| F.A.S. RTE 196 | SECTION (0-2MFT)SCR | COUNTY WHITESIDE | TOTAL SHEETS 21 | SHEET NO. 1 |
| | | ILLINOIS | CONTRACT NO. 64M84 | |

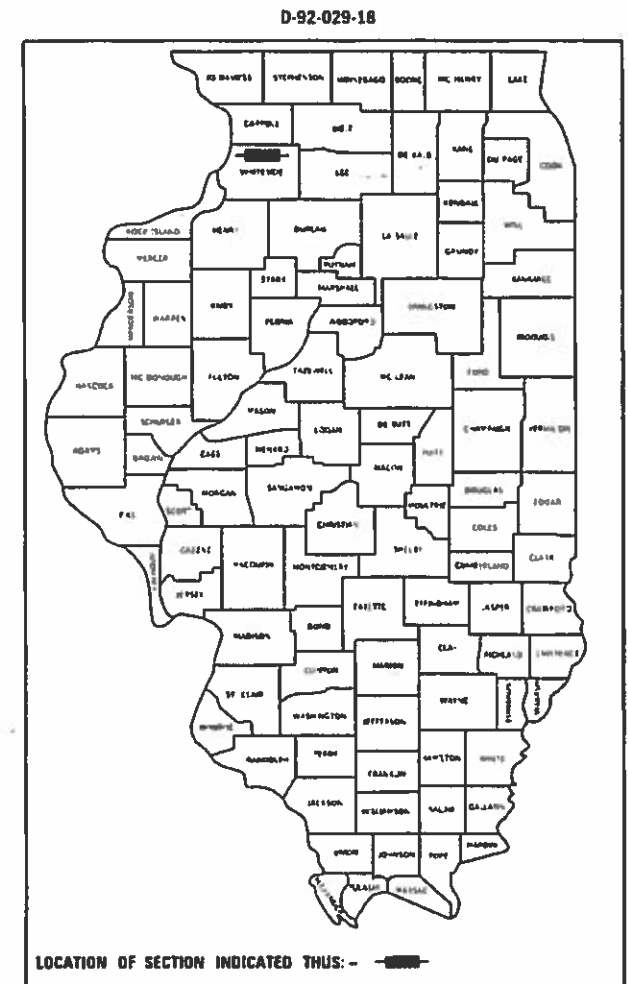
FOR INDEX OF SHEETS & STATE STANDARDS, SEE SHEET NO. 2

PROPOSED HIGHWAY PLANS

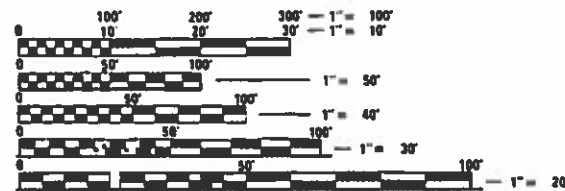
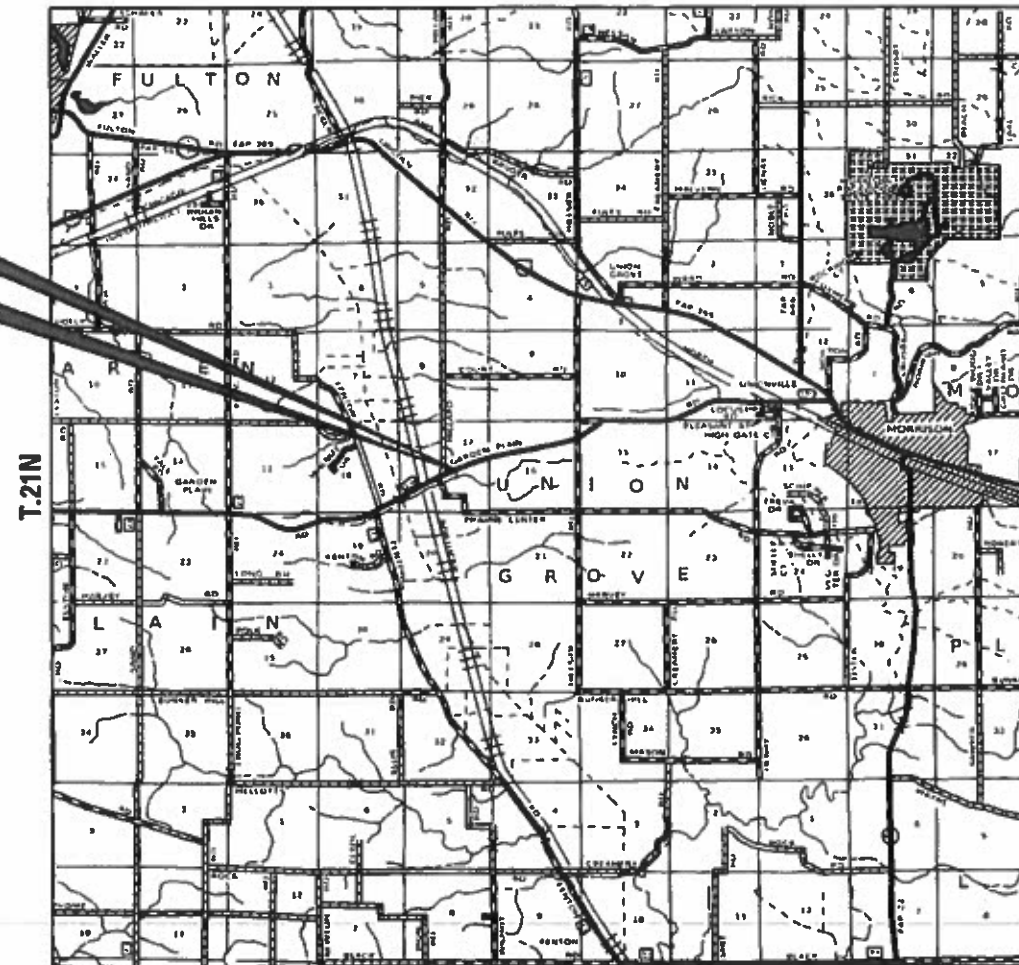
F.A.S. ROUTE 196 (GARDEN PLAIN RD)
SECTION (0-2MFT)SCR
PROJECT STP-T9ME(979)
SCOUR MITIGATION
WHITESIDE COUNTY

C-92-057-19
R.4E

UNION GROVE TOWNSHIP - SECTION 17



PROJECT / IMPROVEMENT
BEGINS STA 377+76
PROJECT / IMPROVEMENT
ENDS STA 377+76



FULL SIZE PLANS HAVE BEEN PREPARED USING STANDARD ENGINEERING SCALES. REDUCED SIZED PLANS WILL NOT CONFORM TO STANDARD SCALES. IN MAKING MEASUREMENTS ON REDUCED PLANS, THE ABOVE SCALES MAY BE USED.

J.U.L.I.E.
JOINT UTILITY LOCATION INFORMATION FOR EXCAVATORS
1-800-892-0123
OR 811

PROJECT ENGINEER: STEVEN M. ROBERY
PROJECT MANAGER: ROGER ROMERO (815) 284-5966

CONTRACT NO. 64M84

GROSS LENGTH = 0.00 FT. = 0.00 MILE
NET LENGTH = 0.00 FT. = 0.00 MILE

STATE OF ILLINOIS
DEPARTMENT OF TRANSPORTATION

SUBMITTED Dec 04, 2019

[Signature]
REGIONAL ENGINEER

Jan 31, 2020
E.A. ETC
ENGINEER OF DESIGN AND ENVIRONMENT

Jan 31, 2020
Director
DIRECTOR OF HIGHWAYS PROJECT IMPLEMENTATION

PRINTED BY THE AUTHORITY
OF THE STATE OF ILLINOIS

INDEX OF SHEETS

- 1 Cover Sheet
- 2 Index of Sheets / State Standards
- 3 General Notes
- 4-5 Summary of Quantities
- 6-7 Typical Sections
- 8-9 Schedule of Quantities
- 10 Earthwork Schedule
- 11-13 Horizontal & Vertical Control
- 14 Plan Sheet
- 15 Profile Sheet
- 16 Erosion Control
- 17 Deliniator and Post Orientation (Dist Std 37.4)
- 17 Field Tile Junction Vaults 2' and 3' DIA (Dist Std 30.2)
- 18-21 Cross Sections

STATE STANDARDS

- 000001 - 07 Standard Symbols, Abbreviations and Patterns
- 001006 Decimal of an Inch and of a Foot
- 280001 - 07 Temporary Erosion Control Systems
- 666001 - 01 Right of Way Markers
- 701001 - 02 Off-Rd Operations, 2L, 2W, More than 15' Away
- 701006 - 05 Off-Rd Operations, 2L, 2W, 15' to 24" from Pavement Edge
- 701011 - 04 Off-Rd Moving Operations, 2L, 2W, Day Only
- 701201 - 05 Lane Closure, 2L, 2W, Day Only, for Speeds ≥ 45 mph
- 701301 - 04 Lane Closure, 2L, 2W, Short Time Operations
- 701901 - 08 Traffic Control Devices
- 720011 - 01 Metal Posts for Signs, Markers & Delineators
- 728001 - 01 Telescoping Steel Sign Support
- 729001 - 01 Applications of Types A & B Metal Posts (For Signs & Markers)

MODEL: Default
 FILE: Model: 64484.dwg
 PROJECT: R:\Projects\64484\Program Development\Studies & Plans\Design\CADD\CAD\Drawings\02_64484-1-1-Index.dwg

| | | | | | | | | | | | |
|-------------------------------------|------------|-----------|---|----------------------------|--|-------------|-------------|-----------|--------------|-----------|---------------------------|
| USER NAME = romerore | DESIGNED - | REVISED - | STATE OF ILLINOIS DEPARTMENT OF TRANSPORTATION | INDEX AND STANDARDS | | F.A.S. RTE. | SECTION | COUNTY | TOTAL SHEETS | SHEET NO. | |
| PLOT SCALE = 100.0000 ' / in. | DRAWN - | REVISED - | | | | 196 | (0-2MFT)SCR | WHITESIDE | 21 | 2 | |
| PLOT DATE = Dec-05-2019 01:32:53 PM | CHECKED - | REVISED - | | SCALE: | | SHEET | OF | SHEETS | STA. | TO STA. | ILLINOIS FED. AID PROJECT |
| | DATE - | REVISED - | | CONTRACT NO. 64484 | | | | | | | |

GENERAL NOTES

All Borrow/Waste/Use sites must be approved by the Department prior to removing any material from the project or initiating any earthmoving activities, including temporary stockpiling outside the limits of construction.

The final top 4 inches of soil in any right-of-way area disturbed by the Contractor must be capable of supporting vegetation. The soil must be from the A horizon (zero to 2' deep) of soil profiles of local soils. The cost of this work shall be included in the unit prices bid and no additional compensation will be allowed.

The Contractor shall seed all disturbed areas within the project limits. Seeding Class 4 or 2A shall be used, except in front of properties where the grass will be mowed, then use Seeding, Class 1A. Class 2A shall be used on front slopes and ditch bottoms. Class 4 shall be used behind Type A gutter, on all backslopes and areas behind the backslope, and beyond the toe of front slope on fill sections without ditches. This work will be included in the contract unit price per Cubic Yard for EARTH EXCAVATION.

Fertilizer shall be applied to all disturbed areas and incorporated into the seedbed prior to seeding or placement of sod at the rate specified in Sections 250 and 252 of the Standard Specifications. This work shall be included in the cost of EARTH EXCAVATION.

The Contractor shall mow applicable areas with Seeding Class 1A and Class 2A at the completion of the project. The vegetation must be at least 6" long before mowing. The vegetation shall be mowed to obtain a height of not more than 3 inches. All debris must be cleared from the right-of-way immediately after the mowing. This work shall be included in the cost of EARTH EXCAVATION.

A Nationwide 404 Permit has been issued for this project and the conditions of that permit must be adhered to.

Culvert & bridge flows must be maintained throughout the project. Normal flow shall be allowed to pass at the rate it enters the jobsite. High flows shall be allowed to pass without causing damage to upstream properties.

Where field tile is encountered, storm sewer or pipe drain will be used in accordance with Section 611. The minimum size for replacement will be 6" for Pipe Drains and 8" for Storm Sewer, but the size must be at least 2" larger than the adjoining tile. A Field Tile Junction Vault will be constructed at the right of way to connect the tile and storm sewer. See the Summary of Quantities for the estimated quantities.

Right-of-way markers will be erected per Highway Standard 666001 with the back face of the marker on the right-of-way line unless the new right-of-way line has been surveyed and pinned, in which instance the right-of-way markers will be erected 12 inches inside the new right-of-way line. Method of installation shall be approved by the Engineer.

The Contractor shall be responsible for locating and protecting utility property during construction operations as outlined in Article 107.39 of the Standard Specifications. A minimum of 48 hours advance notice is required for non-emergency work. The JULIE number is 800-892-0123. The following listed utilities located within the project limits or immediately adjacent to the project construction limits are members of JULIE:

Mediacom 309-743-4750
ComEd 630-437-2212
Frontier Legacy 309-853-6293

IDOT is not a member of JULIE. If you are near any overhead lighting, intersection lighting or traffic signals, contact the IDOT Traffic Office at 815/284-5469 at least 48 hours prior to work.

Contractor shall contact COM ED 3 Weeks prior to construction activities to notify COM ED that the pole and guy wires will be protected from grading activities and allow COM ED the opportunity to provide input.

Contractor shall field verify the exact location of the Frontier utility line depicted in plans, prior to commencing work.

The Contractor shall identify and protect from grading activities the utility electric pole (and associated guy wires) located at STA 328+14, Offset 74' LT.

Access Restrictions:

- CONTRACTOR shall not park construction vehicles, or place any construction equipment or materials, along the EB direction of Garden Plain Rd (shoulders or off-road)
- CONTRACTOR personnel shall remain on the north side of Garden Plain Rd (WB direction) at all times and perform all work from the north side of Garden Plain Rd. only.
- CONTRACTOR access to site from the roadway shall be limited, from STA 328+50 to STA 329+00 LT. All materials required for temporary construction access shall be included in cost of GRADING AND SHAPING DITCHES and shall be approved by Engineer.
- No work is to be performed at the south (outlet) side of the existing box culvert.
- Access to the interior of the existing culvert shall only be from the north side during culvert cleaning. See Special Provision for CULVERT TO BE CLEANED for requirement.

The Contractor shall remove, clean and safely store the existing delineators prior to any excavation activities. Delineators may be stored along the existing ROW and shall be reinstalled at completion of the project to the satisfaction of the Engineer. This work shall be included in the cost of EARTH EXCAVATION.

| | | | | | | | | | | | | |
|---------------------------|--------------------------------|--------------------------------|-----------|---|----------------------|--|--|---------------------------------------|-------------|-----------|--------------|-----------|
| FILE NAME = 64M84.GN.docx | USER NAME = | DESIGNED - Engineering Systems | REVISED - | STATE OF ILLINOIS DEPARTMENT OF TRANSPORTATION | GENERAL NOTES | | | ROUTE | SECTION | COUNTY | TOTAL SHEETS | SHEET NO. |
| | PLOT SCALE = | DRAWN - | REVISED - | | | | | FAS 196 | (0-2MFT)SCR | Whiteside | 21 | 3 |
| | PLOT DATE = 12/6/2019 11:32 AM | CHECKED - | REVISED - | | SCALE: | | | SHEET NO. 3 OF 17 SHEETS STA. TO STA. | | | | |
| | | DATE - 12/6/2019 10:59 AM | REVISED - | | ILLINOIS | | | FED. AID PROJECT | | | | |

MODEL: Default
 FILE: \\blm1c1.pva\pub\aroom\data\illinois.gov\PWIDOT\Documents\DOT_Offices\District_2\Projects\64M84\Program_Development\Studies & Plans\Design\CADD\CAD\Drawings\02_64M84-PL-500.dgn

| | | | | | RURAL |
|-------------|---|-------|----------|-----------|-------|
| | | | | | 0020 |
| CODE NUMBER | ITEM | UNIT | TOTAL | STP | |
| | | | QUANTITY | 80% FED | |
| | | | | 20% STATE | |
| 20200100 | EARTH EXCAVATION | CU YD | 820 | 820 | |
| 21400100 | GRADING AND SHAPING DITCHES | FOOT | 75 | 75 | |
| 25100630 | EROSION CONTROL BLANKET | SQ YD | 1,538 | 1,538 | |
| 28000250 | TEMPORARY EROSION CONTROL SEEDING | POUND | 127 | 127 | |
| 28000500 | INLET AND PIPE PROTECTION | EACH | 1 | 1 | |
| 28100107 | STONE RIPRAP, CLASS A4 | SQ YD | 478 | 478 | |
| 28200200 | FILTER FABRIC | SQ YD | 478 | 478 | |
| 60100925 | PIPE DRAINS 8" | FOOT | 20 | 20 | |
| 61133200 | FIELD TILE JUNCTION VAULTS, 3' DIA. | EACH | 1 | 1 | |
| 66600105 | FURNISHING AND ERECTING RIGHT OF WAY MARKERS | EACH | 5 | 5 | |
| 67100100 | MOBILIZATION | L SUM | 1 | 1 | |
| 70100450 | TRAFFIC CONTROL AND PROTECTION, STANDARD 701201 | L SUM | 1 | 1 | |
| Z0005300 | BOX CULVERTS TO BE CLEANED | EACH | 1 | 1 | |
| Z0013798 | CONSTRUCTION LAYOUT | L SUM | 1 | 1 | |

* SPECIALTY ITEM

| | | |
|-------------------------------------|------------|-----------|
| USER NAME = romerore | DESIGNED - | REVISED - |
| | DRAWN - | REVISED - |
| PLOT SCALE = 40.0000 ' / in. | CHECKED - | REVISED - |
| PLOT DATE = Dec-05-2019 01:34:59 PM | DATE - | REVISED - |

**STATE OF ILLINOIS
DEPARTMENT OF TRANSPORTATION**

SUMMARY OF QUANTITIES

SCALE: SHEET OF SHEETS STA. TO STA.

| | | | | |
|-------------|-------------|-----------|--------------------|-----------|
| F.A.S. RTE. | SECTION | COUNTY | TOTAL SHEETS | SHEET NO. |
| 196 | (0-2MFT)SCR | WHITESIDE | 21 | 4 |
| | | | CONTRACT NO. 64M84 | |
| | | ILLINOIS | FED. AID PROJECT | |

| CODE NUMBER | ITEM | UNIT | TOTAL QUANTITY | CONSTRUCTION CODE: | |
|-------------|----------|------------------|----------------|--------------------|------|
| | | | | RURAL | 0020 |
| | | | | STP | |
| | | | | 80% FED | |
| | | | | 20% STATE | |
| * | Z0025505 | PROPERTY MARKERS | EACH | 1 | 1 |

* SPECIALTY ITEM

MODEL: Default
 FILE: \\blm1c01.pva\pub\lancorn.dwg; \\illinois.gov\PI\DOT\Documents\DOT_Offices\District 2\Projects\64M84\Program_Development\Studies & Plans\Design\CADD\CAD\Sheet\02_64M84-SP-500.dwg

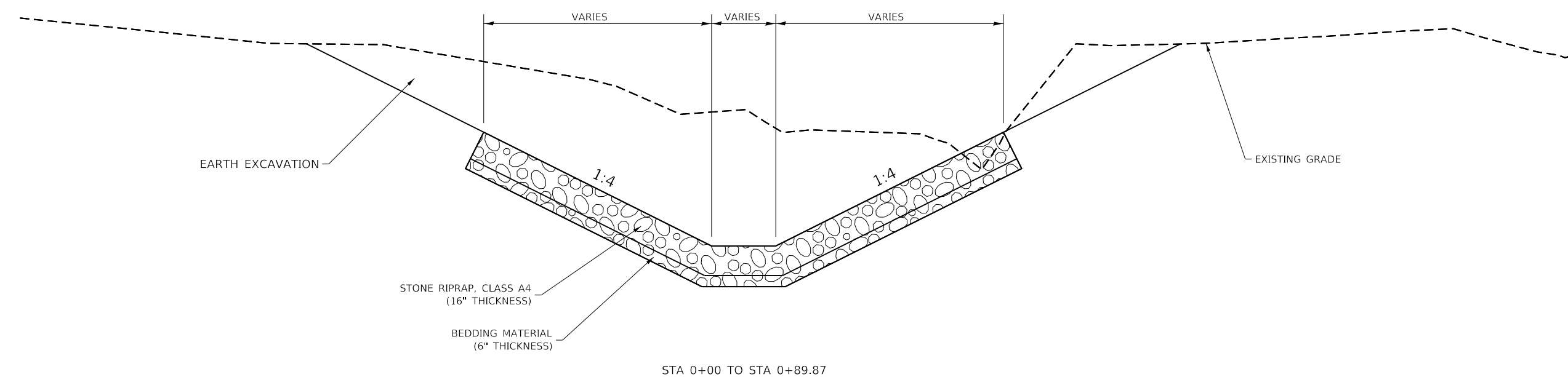
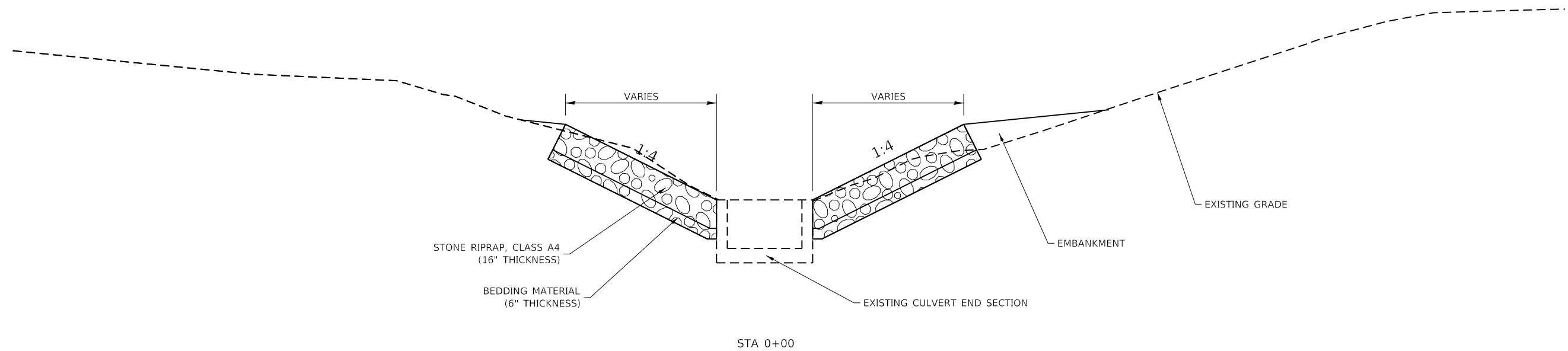
| | | |
|-------------------------------------|------------|-----------|
| USER NAME = romerore | DESIGNED - | REVISED - |
| | DRAWN - | REVISED - |
| PLOT SCALE = 40.0000 ' / in. | CHECKED - | REVISED - |
| PLOT DATE = Dec-05-2019 01:35:46 PM | DATE - | REVISED - |

**STATE OF ILLINOIS
 DEPARTMENT OF TRANSPORTATION**

SUMMARY OF QUANTITIES

SCALE: SHEET OF SHEETS STA. TO STA.

| F.A.S. RTE. | SECTION | COUNTY | TOTAL SHEETS | SHEET NO. |
|-------------|-------------|-----------|--------------------|-----------|
| 196 | (0-2MFT)SCR | WHITESIDE | 21 | 5 |
| | | | CONTRACT NO. 64M84 | |
| | | ILLINOIS | FED. AID PROJECT | |



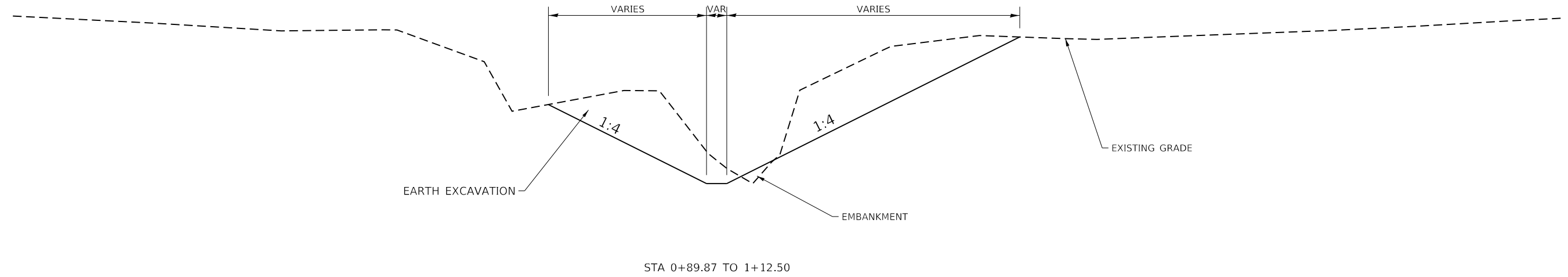
MODEL: Default
 FILE: Model: 644884.dwg
 PROJECT: 644884.dwg
 USER: romerore
 DATE: 12/05/2019 01:36:47 PM

| | | |
|-------------------------------------|------------|-----------|
| USER NAME = romerore | DESIGNED - | REVISED - |
| | DRAWN - | REVISED - |
| PLOT SCALE = 40.0000' / in. | CHECKED - | REVISED - |
| PLOT DATE = Dec-05-2019 01:36:47 PM | DATE - | REVISED - |

STATE OF ILLINOIS
DEPARTMENT OF TRANSPORTATION

| TYPICAL SECTIONS | | | | |
|------------------|-------|----|--------|--------------|
| SCALE: | SHEET | OF | SHEETS | STA. TO STA. |

| | | | | |
|---------------------------|-------------|-----------|--------------|-----------|
| F.A.S. RTE. | SECTION | COUNTY | TOTAL SHEETS | SHEET NO. |
| 196 | (0-2MFT)SCR | WHITESIDE | 21 | 6 |
| CONTRACT NO. 644884 | | | | |
| ILLINOIS FED. AID PROJECT | | | | |



MODEL: Default
 FILE: h:\a\c\p\suplanroom\dat\illinois\p\RIDOT\Documents\RIDOT_Offices\District_2\Projects\64M84\Program_Development\Studies & Plans\Design\CADD\CAD\Sheet\02_64M84-11-17-19.dgn

| | | |
|-------------------------------------|------------|-----------|
| USER NAME = romerore | DESIGNED - | REVISED - |
| | DRAWN - | REVISED - |
| PLOT SCALE = 40.0000 ' / in. | CHECKED - | REVISED - |
| PLOT DATE = Dec-05-2019 01:37:15 PM | DATE - | REVISED - |

**STATE OF ILLINOIS
 DEPARTMENT OF TRANSPORTATION**

TYPICAL SECTIONS

SCALE: SHEET OF SHEETS STA. TO STA.

| F.A.S. RTE. | SECTION | COUNTY | TOTAL SHEETS | SHEET NO. |
|---------------------------|-------------|-----------|--------------------|-----------|
| 196 | (0-2MFT)SCR | WHITESIDE | 21 | 7 |
| ILLINOIS FED. AID PROJECT | | | CONTRACT NO. 64M84 | |

21400100 GRADING AND SHAPING DITCHES

| <u>FOOT</u> | <u>LOCATION</u> |
|-------------|------------------------|
| 75 | Sta 328+50 - 329+25 LT |
| <u>75</u> | TOTAL |

25100630 EROSION CONTROL BLANKET

| <u>SQ YD</u> | <u>LOCATION</u> |
|--------------|------------------------|
| 1,538 | Sta 328+00 - 329+40 LT |
| <u>1,538</u> | TOTAL |

28000250 TEMPORARY EROSION CONTROL SEEDING

| <u>POUND</u> | <u>LOCATION</u> |
|--------------|------------------------|
| 127 | Sta 328+00 - 329+40 LT |
| <u>127</u> | TOTAL |

28000500 INLET AND PIPE PROTECTION

| <u>EACH</u> | <u>LOCATION</u> |
|-------------|---------------------|
| 1 | Sta 328+32 LT 60.51 |
| <u>1</u> | TOTAL |

28100107 STONE RIPRAP, CLASS A4

| <u>SQ YD</u> | <u>LOCATION</u> |
|--------------|------------------------|
| 478 | Sta 328+17 - 329+11 LT |
| <u>478</u> | TOTAL |

28200200 FILTER FABRIC

| <u>SQ YD</u> | <u>LOCATION</u> |
|--------------|------------------------|
| 478 | Sta 328+17 - 329+11 LT |
| <u>478</u> | TOTAL |

60100925 PIPE DRAINS 8"

| <u>FOOT</u> | <u>LOCATION</u> |
|-------------|--|
| 20 | Contingency, as Needed & Directed by the Resident Eng. |
| <u>20</u> | TOTAL |

61133200 FIELD TILE JUNCTION VAULTS, 3' DIA.

| <u>EACH</u> | <u>LOCATION</u> |
|-------------|--|
| 1 | Contingency, as Needed & Directed by the Resident Eng. |
| <u>1</u> | TOTAL |

66600105 FURNISHING AND ERECTING RIGHT OF WAY MARKERS

| <u>EACH</u> | <u>LOCATION</u> |
|-------------|----------------------|
| 1 | Sta 328+00 LT 76.69 |
| 1 | Sta 328+50 LT 140.00 |
| 1 | Sta 328+95 LT 145.00 |
| 1 | Sta 329+15 LT 110.00 |
| 1 | Sta 329+25 LT 40.25 |
| <u>5</u> | TOTAL |

MODEL: Default
 FILE: \\blm1c1.pva\pub\lancorn.dwg
 PROJECT: \\blm1c1.pva\pub\lancorn.dwg
 OFFICE: \\blm1c1.pva\pub\lancorn.dwg
 DATE: 2019-05-05 01:38:42 PM

| | | |
|-------------------------------------|------------|-----------|
| USER NAME = romerore | DESIGNED - | REVISED - |
| PLOT SCALE = 40,0000 ' / in. | DRAWN - | REVISED - |
| PLOT DATE = Dec-05-2019 01:38:42 PM | CHECKED - | REVISED - |
| | DATE - | REVISED - |

**STATE OF ILLINOIS
DEPARTMENT OF TRANSPORTATION**

SCHEDULE OF QUANTITIES

SCALE: SHEET OF SHEETS STA. TO STA.

| F.A.S. RTE. | SECTION | COUNTY | TOTAL SHEETS | SHEET NO. |
|-------------|-------------|-----------|--------------------|-----------|
| 196 | (0-2MFT)SCR | WHITESIDE | 21 | 8 |
| | | | CONTRACT NO. 64M84 | |
| | | ILLINOIS | FED. AID PROJECT | |

Z0005300 BOX CULVERTS TO BE CLEANED

| <u>EACH</u> | <u>LOCATION</u> |
|-------------|-----------------|
| 1 | Sta 327+79 LT |
| 1 | TOTAL |

Z0025505 PROPERTY MARKERS

| <u>EACH</u> | <u>LOCATION</u> |
|-------------|--|
| 1 | Contingency, as Needed & Directed by the Resident Eng. |
| 1 | TOTAL |

MODEL: Default
 FILE: h:\m1\c:\pub\planroom\dat\illinois\gov\PWIDOT\Documents\DOT_Offices\District 2\Projects\64M84\Program_Development\Studies & Plans\Design\CADD\CAD\Sheet\02_64M84-PS-Schedule.dgn

| | | |
|-------------------------------------|------------|-----------|
| USER NAME = romerore | DESIGNED - | REVISED - |
| | DRAWN - | REVISED - |
| PLOT SCALE = 40.0000 ' / in. | CHECKED - | REVISED - |
| PLOT DATE = Dec-05-2019 01:39:00 PM | DATE - | REVISED - |

**STATE OF ILLINOIS
DEPARTMENT OF TRANSPORTATION**

| | |
|-------------------------------|------------------------------|
| SCHEDULE OF QUANTITIES | |
| SCALE: | SHEET OF SHEETS STA. TO STA. |

| F.A.S. RTE. | SECTION | COUNTY | TOTAL SHEETS | SHEET NO. |
|--------------------|-------------|-----------|---------------------------|-----------|
| 196 | (0-2MFT)SCR | WHITESIDE | 21 | 9 |
| CONTRACT NO. 64M84 | | | | |
| | | | ILLINOIS FED. AID PROJECT | |

MODEL: Default
 FILE: \\blm1c:\pub\blm1room\dat\illinois\pwr\WIDOT\Documents\DOT_Offices\District 2\Projects\64M84\Program_Development\Studies & Plans\Design\CADD\CAD\Sheet02_64M84-1-1-1-1.dgn

| STATION NO. | END AREA SQ.FT. | | DISTANCE (STA) | SECTION TOTALS SQ.FT. | | SECTION TOTALS CU.YD. | | ACCUMUL. TOTALS CU.YD. | | SHRINK FACTOR % | BALANCE PER SECTION CU. YD. | BALANCE WASTE (+) SHORT (-) CU. YDS. |
|-------------|-----------------|-------|----------------|-----------------------|------|-----------------------|------|------------------------|------|-----------------|-----------------------------|--------------------------------------|
| | CUT | FILL | | CUT | FILL | CUT | FILL | CUT | FILL | | | |
| 0 + -14 | 0 | 0 | 0.00 | 0.0 | 0.0 | 0.0 | 0.0 | 0.0 | 0.0 | 25 | 0.0 | 0.0 |
| 0 + 00 | 43.54 | 9.56 | 0.14 | 21.8 | 4.8 | 11.0 | 2.4 | 11.0 | 2.4 | 25 | 5.9 | 5.9 |
| 0 + 10 | 102.92 | 26.52 | 0.10 | 73.2 | 8.7 | 27.1 | 3.2 | 38.2 | 5.6 | 25 | 17.1 | 23.0 |
| 0 + 20 | 112.34 | 0 | 0.10 | 107.6 | 10.4 | 39.9 | 3.8 | 78.0 | 9.5 | 25 | 26.1 | 49.0 |
| 0 + 24 | 112.86 | 0.23 | 0.04 | 112.6 | 0.1 | 14.9 | 0.0 | 93.0 | 9.5 | 25 | 11.2 | 60.2 |
| 0 + 30 | 251.53 | 0 | 0.06 | 182.2 | 0.1 | 43.3 | 0.0 | 136.3 | 9.5 | 25 | 32.5 | 92.7 |
| 0 + 33 | 316.94 | 0 | 0.03 | 284.2 | 0.0 | 27.2 | 0.0 | 163.4 | 9.5 | 25 | 20.4 | 113.0 |
| 0 + 40 | 321.55 | 0 | 0.07 | 319.2 | 0.0 | 87.7 | 0.0 | 251.2 | 9.5 | 25 | 65.8 | 178.8 |
| 0 + 50 | 327.1 | 0 | 0.10 | 324.3 | 0.0 | 120.1 | 0.0 | 371.3 | 9.5 | 25 | 90.1 | 268.9 |
| 0 + 60 | 349.57 | 0 | 0.10 | 338.3 | 0.0 | 125.3 | 0.0 | 496.6 | 9.5 | 25 | 94.0 | 362.9 |
| 0 + 70 | 372.85 | 0 | 0.10 | 361.2 | 0.0 | 133.8 | 0.0 | 630.4 | 9.5 | 25 | 100.3 | 463.3 |
| 0 + 80 | 141.8 | 0.27 | 0.10 | 257.3 | 0.1 | 94.1 | 0.0 | 724.4 | 9.6 | 25 | 70.5 | 533.8 |
| 0 + 80 | 139.66 | 0.32 | 0.00 | 140.7 | 0.3 | 0.7 | 0.0 | 725.1 | 9.6 | 25 | 0.5 | 534.3 |
| 0 + 90 | 140.2 | 0.88 | 0.10 | 139.9 | 0.6 | 51.2 | 0.2 | 776.3 | 9.8 | 25 | 38.1 | 572.4 |
| 0 + 90 | 65.31 | 0.82 | 0.00 | 102.8 | 0.9 | 0.5 | 0.0 | 776.8 | 9.8 | 25 | 0.4 | 572.8 |
| 1 + 00 | 52.28 | 0.4 | 0.10 | 58.8 | 0.6 | 21.8 | 0.2 | 798.5 | 10.0 | 25 | 16.1 | 588.9 |
| 1 + 10 | 50.26 | 0.44 | 0.10 | 51.3 | 0.4 | 19.0 | 0.2 | 817.5 | 10.2 | 25 | 14.1 | 603.0 |
| 1 + 13 | 0 | 0 | 0.03 | 25.1 | 0.2 | 2.3 | 0.0 | 819.9 | 10.2 | 25 | 1.7 | 604.7 |

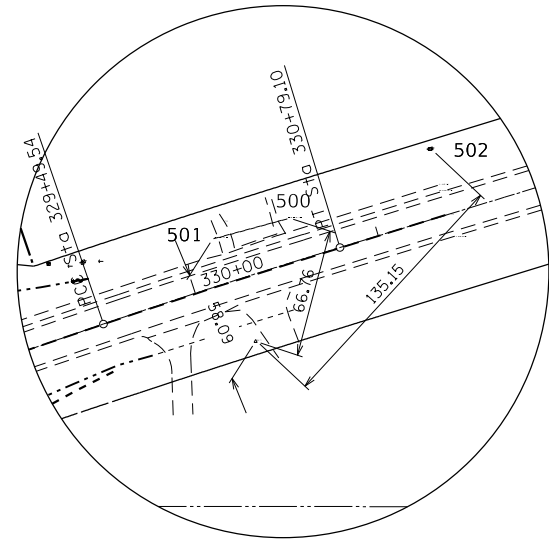
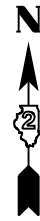
| | | |
|-------------------------------------|------------|-----------|
| USER NAME = romerore | DESIGNED - | REVISED - |
| | DRAWN - | REVISED - |
| PLOT SCALE = 40.0000' / in. | CHECKED - | REVISED - |
| PLOT DATE = Dec-05-2019 01:39:18 PM | DATE - | REVISED - |

**STATE OF ILLINOIS
DEPARTMENT OF TRANSPORTATION**

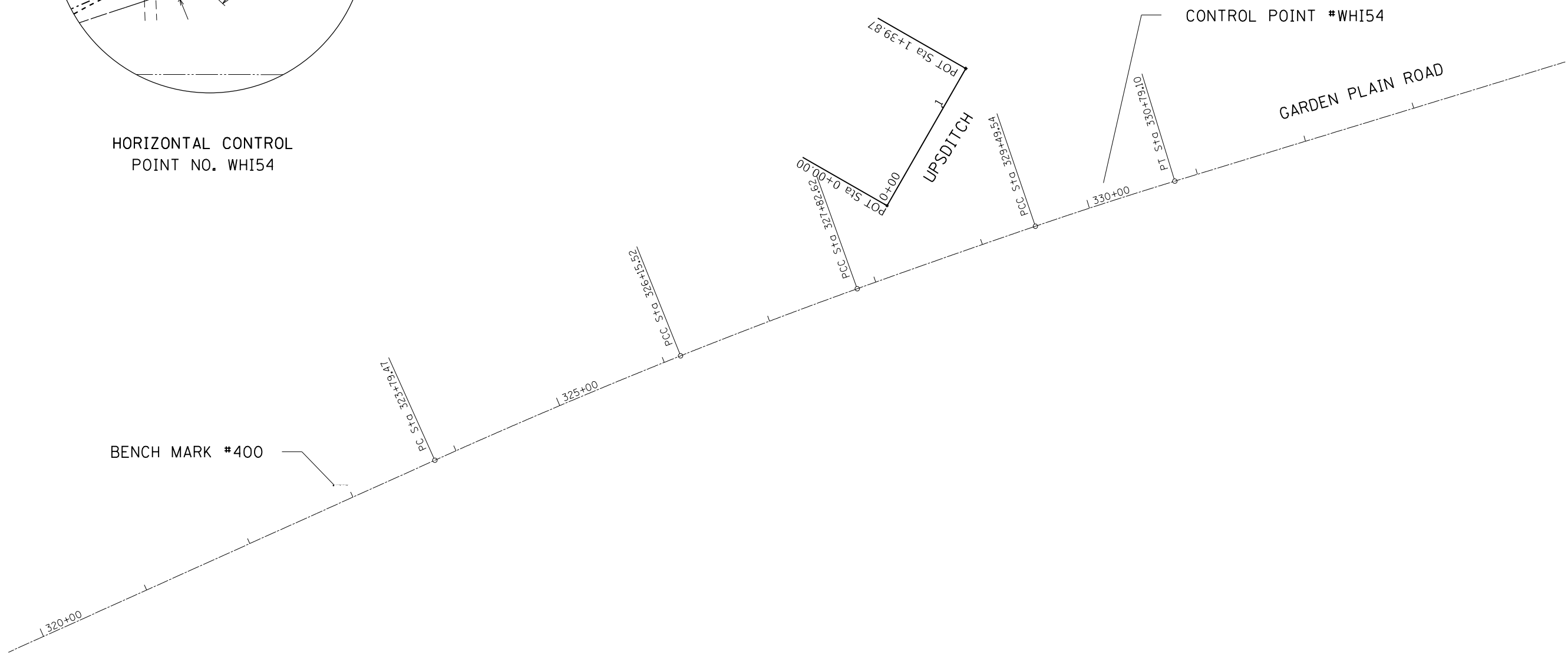
EARTHWORK SCHEDULE

SCALE: SHEET OF SHEETS STA. TO STA.

| | | | | |
|-------------|-------------|-----------|--------------------|-----------|
| F.A.S. RTE. | SECTION | COUNTY | TOTAL SHEETS | SHEET NO. |
| 196 | (0-2MFT)SCR | WHITESIDE | 21 | 10 |
| | | | CONTRACT NO. 64M84 | |
| | | ILLINOIS | FED. AID PROJECT | |



HORIZONTAL CONTROL POINT NO. WHI54



MODEL: Default
 FILE: Model: 20191201\Documents\DOT - Offices\District 2\Projects\64M84\Program Development\Studies & Plans\Design\CADD\CAD\Sheet\02_64M84-H-A1B.dgn

| | | |
|-------------------------------------|------------|-----------|
| USER NAME = romerore | DESIGNED - | REVISED - |
| PLOT SCALE = 100.0000' / in. | DRAWN - | REVISED - |
| PLOT DATE = Dec-05-2019 01:41:14 PM | CHECKED - | REVISED - |
| | DATE - | REVISED - |

**STATE OF ILLINOIS
DEPARTMENT OF TRANSPORTATION**

HORIZONTAL & VERTICAL CONTROL

SCALE: SHEET 1 OF 3 SHEETS STA. TO STA.

| F.A.S RTE. | SECTION | COUNTY | TOTAL SHEETS | SHEET NO. |
|---------------------------|------------|-----------|--------------|-----------|
| 196 | (0-2MFTSCR | WHITESIDE | 21 | 11 |
| CONTRACT NO. 64M84 | | | | |
| ILLINOIS FED. AID PROJECT | | | | |

Chain GRDANPLN contains:
 WHA1 WHA200 CUR WHA210 CUR WHA220 CUR WHA230 CUR WHA240 CUR WHA250 CUR WHA260 -
 CUR WHA270 CUR WHA280 CUR WHA290 CUR WHA300 CUR WHA310 CUR WHA320 WHA330 CUR WH-
 A340 CUR WHA350 WHA360 WHA370 WHA380 WHA390 WHA1200 WHA1210 WHA1220 CUR WHA1230-
 CUR WHA1240 CUR WHA1250 CUR WHA1260 CUR WHA1270 CUR WHA1280 CUR WHA1290 CUR WH-
 A1300 WHA1310 CUR WHA1320 CUR WHA1330 CUR WHA1340 CUR WHA1350 CUR WHA1360 CUR W-
 HA1370 WHA1380 CUR WHA1390 CUR WHA1400 CUR WHA1410 CUR WHA1420 CUR WHA1430 CUR -
 WHA1440 WHA1450 CUR WHA1460 CUR WHA1470 CUR WHA1480 CUR WHA1490 CUR WHA1500 CUR-
 WHA1510 CUR WHA1520 CUR WHA1530 CUR WHA1540 CUR WHA1550 CUR WHA1560 CUR WHA157-
 0 CUR WHA1580 WHA1590 CUR WHA1600 CUR WHA1610 CUR WHA1620 CUR WHA1630 CUR WHA16-
 40 CUR WHA1650 CUR WHA1660 WHA1670 WHA1680 CUR WHA1690 CUR WHA1700 CUR WHA1710 -
 CUR WHA1720 CUR WHA1730 CUR WHA1740 CUR WHA1750 CUR WHA1760 CUR WHA1770 CUR WHA-
 1780 CUR WHA1790 CUR WHA1800 WHA1810 CUR WHA1820 CUR WHA1830 CUR WHA1840 CUR WH-
 A1850 CUR WHA1860 200

Beginning chain GRDANPLN description

Curve Data

Curve WHA1410
 P.I. Station 324+97.5138 N 1,872,514.1446 E 2,325,123.0721
 Delta = 2° 26' 09.6876" (RT)
 Degree = 1° 01' 55.2010"
 Tangent = 118.0422'
 Length = 236.0488'
 Radius = 5,551.9151'
 External = 1.2547'
 Long Chord = 236.0310'
 Mid. Ord. = 1.2545'
 P.C. Station 323+79.4716 N 1,872,465.6751 E 2,325,015.4401
 P.T. Station 326+15.5204 N 1,872,557.9955 E 2,325,232.6671
 C.C. N 1,867,403.3809 E 2,327,295.1196

Curve Data

Curve WHA1420
 P.I. Station 326+99.0795 N 1,872,589.0364 E 2,325,310.2466
 Delta = 2° 01' 00.9467" (RT)
 Degree = 1° 12' 25.2483"
 Tangent = 83.5591'
 Length = 167.1008'
 Radius = 4,746.9050'
 External = 0.7354'
 Long Chord = 167.0922'
 Mid. Ord. = 0.7353'
 P.C. Station 326+15.5204 N 1,872,557.9955 E 2,325,232.6671
 P.T. Station 327+82.6213 N 1,872,617.3277 E 2,325,388.8705
 C.C. N 1,868,150.7837 E 2,326,996.0705

Curve Data

Curve WHA1430
 P.I. Station 328+66.0841 N 1,872,645.5864 E 2,325,467.4038
 Delta = 0° 55' 26.6430" (RT)
 Degree = 0° 33' 12.9332"
 Tangent = 83.4628'
 Length = 166.9220'
 Radius = 10,349.8103'
 External = 0.3365'
 Long Chord = 166.9201'
 Mid. Ord. = 0.3365'
 P.C. Station 327+82.6213 N 1,872,617.3277 E 2,325,388.8705
 P.T. Station 329+49.5432 N 1,872,672.5749 E 2,325,546.3827
 C.C. N 1,862,878.7964 E 2,328,893.0938

Curve Data

Curve WHA1440
 P.I. Station 330+14.3250 N 1,872,693.5227 E 2,325,607.6841
 Delta = 1° 52' 55.9119" (RT)
 Degree = 1° 27' 10.2717"
 Tangent = 64.7817'
 Length = 129.5518'
 Radius = 3,943.6729'
 External = 0.5320'
 Long Chord = 129.5460'
 Mid. Ord. = 0.5320'
 P.C. Station 329+49.5432 N 1,872,672.5749 E 2,325,546.3827
 P.T. Station 330+79.0950 N 1,872,712.4458 E 2,325,669.6404
 C.C. N 1,868,940.7714 E 2,326,821.6074

Course from PT WHA1440 to WHA1450 73° 00' 57.5007" Dist 360.9482'

Point WHA1450 N 1,872,817.8806 E 2,326,014.8463 Sta 334+40.0432

Course from WHA1450 to PC WHA1460 72° 54' 43.4937" Dist 569.4484'

Chain UPSDITCH contains:
 88000 88001

Beginning chain UPSDITCH description

Point 88000 N 1,872,690.7172 E 2,325,415.2433 Sta 0+00.0000

Course from 88000 to 88001 29° 50' 59.3161" Dist 139.8727'

Point 88001 N 1,872,812.0335 E 2,325,484.8619 Sta 1+39.8727

Ending chain UPSDITCH description

MODEL: Default
 FILE: h:\mfc_p\pub\barroom.dwg
 PROJECT: \pub\barroom.dwg
 PLOT DATE: Dec-05-2019 01:41:35 PM
 USER: romerore
 DESIGNED: -
 DRAWN: -
 CHECKED: -
 DATE: -
 REVISED: -
 REVISED: -
 REVISED: -
 REVISED: -
 STATE OF ILLINOIS
 DEPARTMENT OF TRANSPORTATION
 HORIZONTAL & VERTICAL CONTROL
 SCALE: SHEET 2 OF 3 SHEETS STA. TO STA.
 F.A.S. RTE. SECTION COUNTY TOTAL SHEETS SHEET NO.
 196 (0-2MFTSCR) WHITESIDE 21 12
 ILLINOIS FED. AID PROJECT
 CONTRACT NO. 64M84

| | | |
|-------------------------------------|------------|-----------|
| USER NAME = romerore | DESIGNED - | REVISED - |
| PLOT SCALE = 100.0000' / in. | DRAWN - | REVISED - |
| PLOT DATE = Dec-05-2019 01:41:35 PM | CHECKED - | REVISED - |
| | DATE - | REVISED - |

STATE OF ILLINOIS
 DEPARTMENT OF TRANSPORTATION

HORIZONTAL & VERTICAL CONTROL

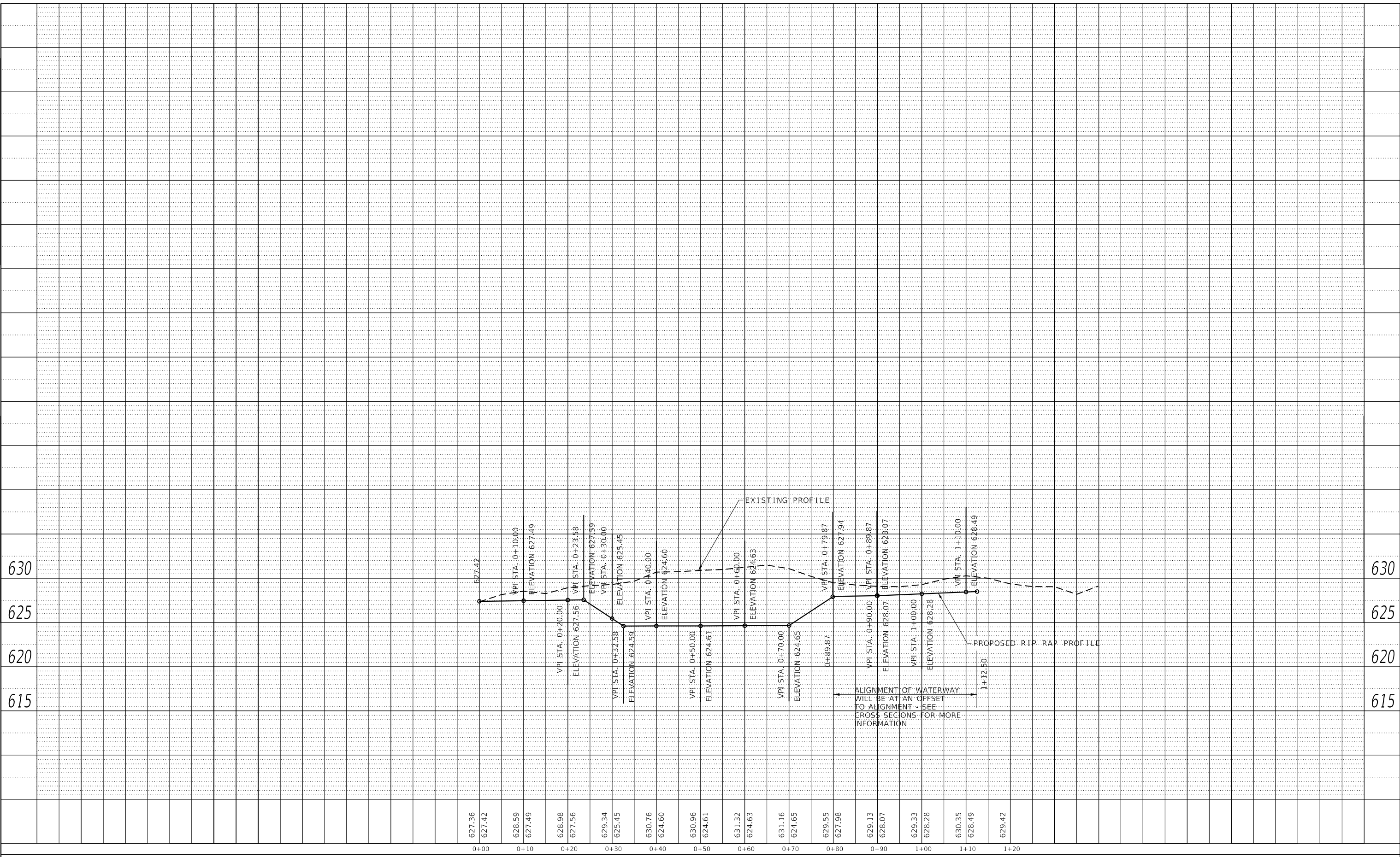
SCALE: SHEET 2 OF 3 SHEETS STA. TO STA.

| | | | | |
|---------------------------|-------------|-----------|--------------|-----------|
| F.A.S. RTE. | SECTION | COUNTY | TOTAL SHEETS | SHEET NO. |
| 196 | (0-2MFTSCR) | WHITESIDE | 21 | 12 |
| CONTRACT NO. 64M84 | | | | |
| ILLINOIS FED. AID PROJECT | | | | |

| | | | |
|------|-------------------|----|------|
| PLAN | SURVEYED | BY | DATE |
| | PLOTTED | | |
| | ALIGNMENT CHECKED | | |
| | NOTE BOOK NO. | | |
| | CADD FILE NAME | | |

| | | | |
|---------|--------------------|----|------|
| PROFILE | SURVEYED | BY | DATE |
| | PLOTTED | | |
| | GRADES CHECKED | | |
| | NOTE BOOK NO. | | |
| | STRUCTURE NOTATION | | |

MODEL: Default
 FILE NAME: p:\1\lbrroom.dwg
 I:\projects\6188\program Development\Studies 5 - Plans\Design\CADD\CAD\Sheets\02-6188a-rip-rap.dwg



| | |
|------------|---------------------------|
| USER NAME | = romerore |
| PLOT SCALE | = 20.0000 ' / in. |
| PLOT DATE | = Dec-05-2019 01:49:57 PM |

| | |
|----------|---|
| DESIGNED | - |
| DRAWN | - |
| CHECKED | - |
| DATE | - |

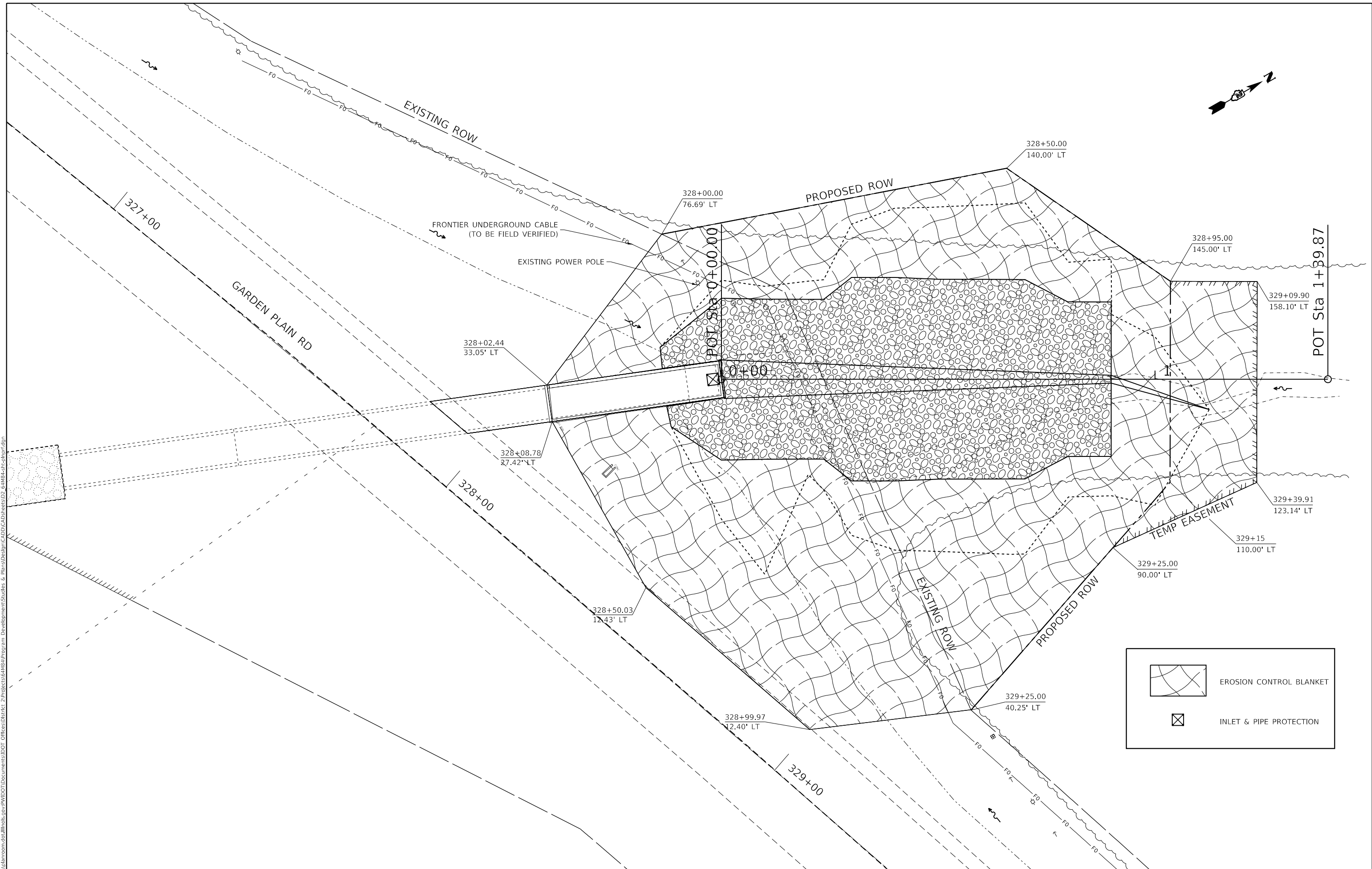
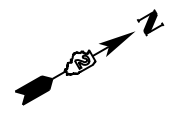
| | |
|---------|---|
| REVISED | - |
| REVISED | - |
| REVISED | - |
| REVISED | - |

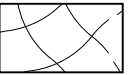

**STATE OF ILLINOIS
 DEPARTMENT OF TRANSPORTATION**

RIP-RAP PROFILE SHEET

SCALE: SHEET OF SHEETS STA. TO STA.

| | | | | |
|--------------------|--------------|------------------|--------------|-----------|
| F.A.S. RTE. | SECTION | COUNTY | TOTAL SHEETS | SHEET NO. |
| 196 | (0-2 MFT)SCR | WHITESIDE | 21 | 15 |
| CONTRACT NO. 64M84 | | | | |
| ILLINOIS | | FED. AID PROJECT | | |



| | |
|---|-------------------------|
|  | EROSION CONTROL BLANKET |
|  | INLET & PIPE PROTECTION |

MODEL: Default
 FILE: \\blm\c:\pub\blm\room\dat\illinois\pww\DOT\Documents\DOT_Offices\blm\2\Projects\64M84\Program_Development\Studies & Plans\Design\CADD\CADD_Sheets\02_64M84\Plan\erof.dgn

| | | |
|-------------------------------------|------------|-----------|
| USER NAME = romerore | DESIGNED - | REVISED - |
| | DRAWN - | REVISED - |
| PLOT SCALE = 20.0000 ' / in. | CHECKED - | REVISED - |
| PLOT DATE = Dec-05-2019 01:45:42 PM | DATE - | REVISED - |

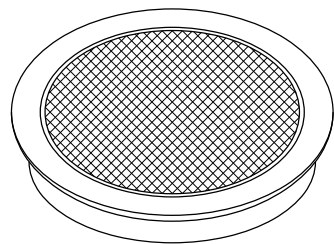
STATE OF ILLINOIS
DEPARTMENT OF TRANSPORTATION

EROSION CONTROL /DRAINAGE & UTILITIES

SCALE: SHEET OF SHEETS STA. TO STA.

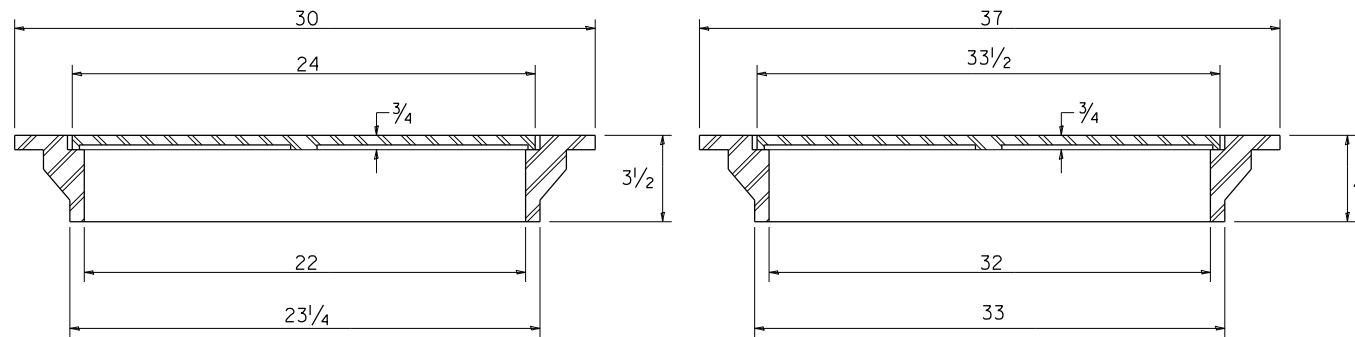
| | | | | |
|-------------|--------------|-----------|--------------------|-----------|
| F.A.S. RTE. | SECTION | COUNTY | TOTAL SHEETS | SHEET NO. |
| 196 | (0-2 MFT)SCR | WHITESIDE | 21 | 16 |
| | | | CONTRACT NO. 64M84 | |
| | | ILLINOIS | FED. AID PROJECT | |

FIELD TILE JUNCTION VAULTS 2' AND 3' DIA.



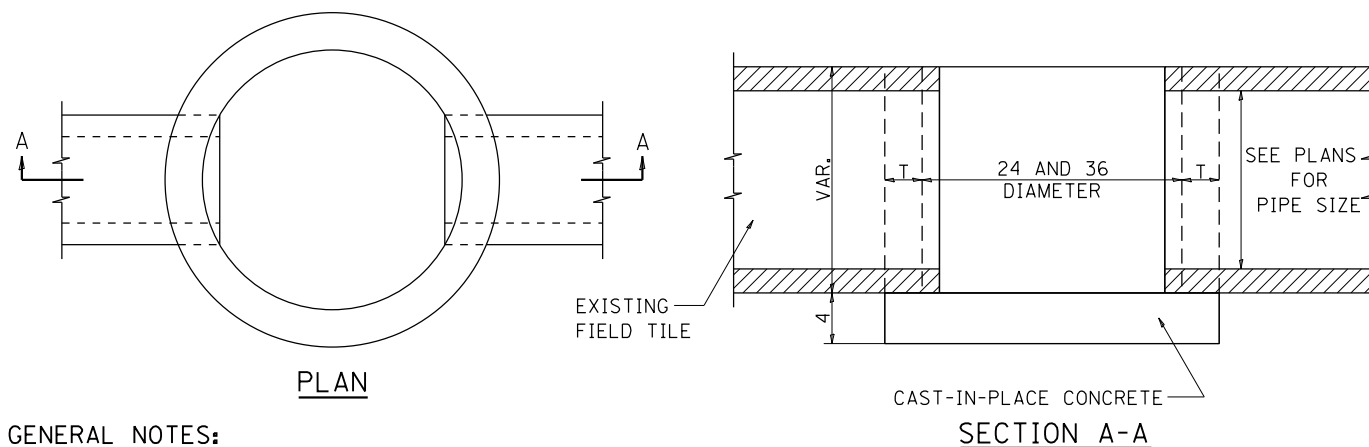
FRAME & LID FOR
2' VAULT

FRAME & LID FOR
3' VAULT



TOTAL WEIGHT: 146 LBS.

TOTAL WEIGHT: 280 LBS.



PLAN

SECTION A-A

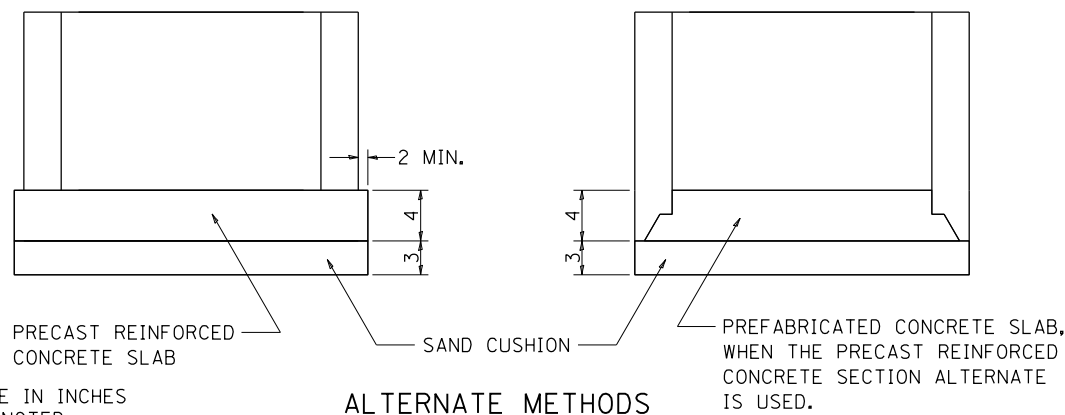
GENERAL NOTES:

THE FRAME AND LID IS REQUIRED ON ALL JUNCTION VAULTS.
THE FRAME AND LID SHALL BE INSTALLED FLUSH WITH THE GROUND.

FRAME AND LIDS:

R-6040 OR EQUIVALENT (2')
R-6080 OR EQUIVALENT (3')

| ALTERNATE MATERIALS FOR WALLS | T |
|-------------------------------------|---|
| BRICK MASONRY | 8 |
| CAST-IN-PLACE CONCRETE | 6 |
| CONCRETE MASONRY UNIT | 5 |
| PRECAST REINFORCED CONCRETE SECTION | 3 |



PRECAST REINFORCED
CONCRETE SLAB

SAND CUSHION

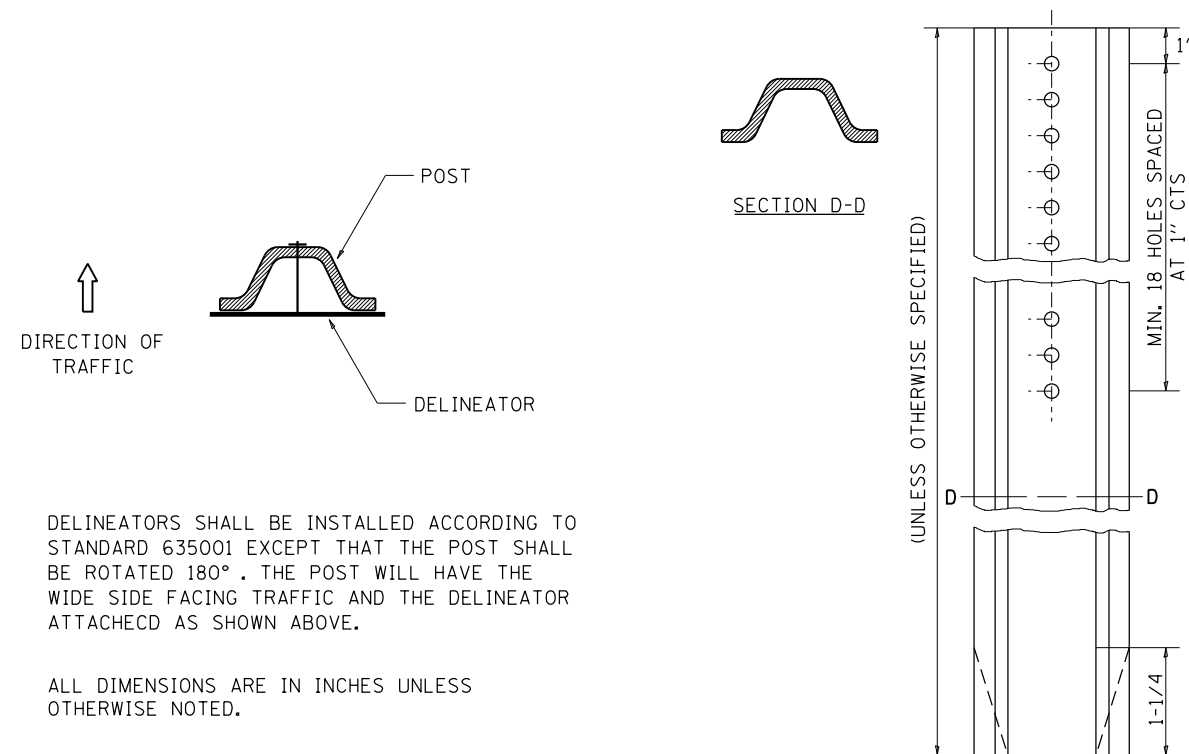
PREFABRICATED CONCRETE SLAB,
WHEN THE PRECAST REINFORCED
CONCRETE SECTION ALTERNATE
IS USED.

ALTERNATE METHODS

ALL DIMENSIONS ARE IN INCHES
UNLESS OTHERWISE NOTED.

REVISED - 1-03-18
REVISED - 6-27-14
REVISED - 10-14-11

DELINEATOR AND POST ORIENTATION



DELINEATORS SHALL BE INSTALLED ACCORDING TO STANDARD 635001 EXCEPT THAT THE POST SHALL BE ROTATED 180°. THE POST WILL HAVE THE WIDE SIDE FACING TRAFFIC AND THE DELINEATOR ATTACHED AS SHOWN ABOVE.

ALL DIMENSIONS ARE IN INCHES UNLESS OTHERWISE NOTED.

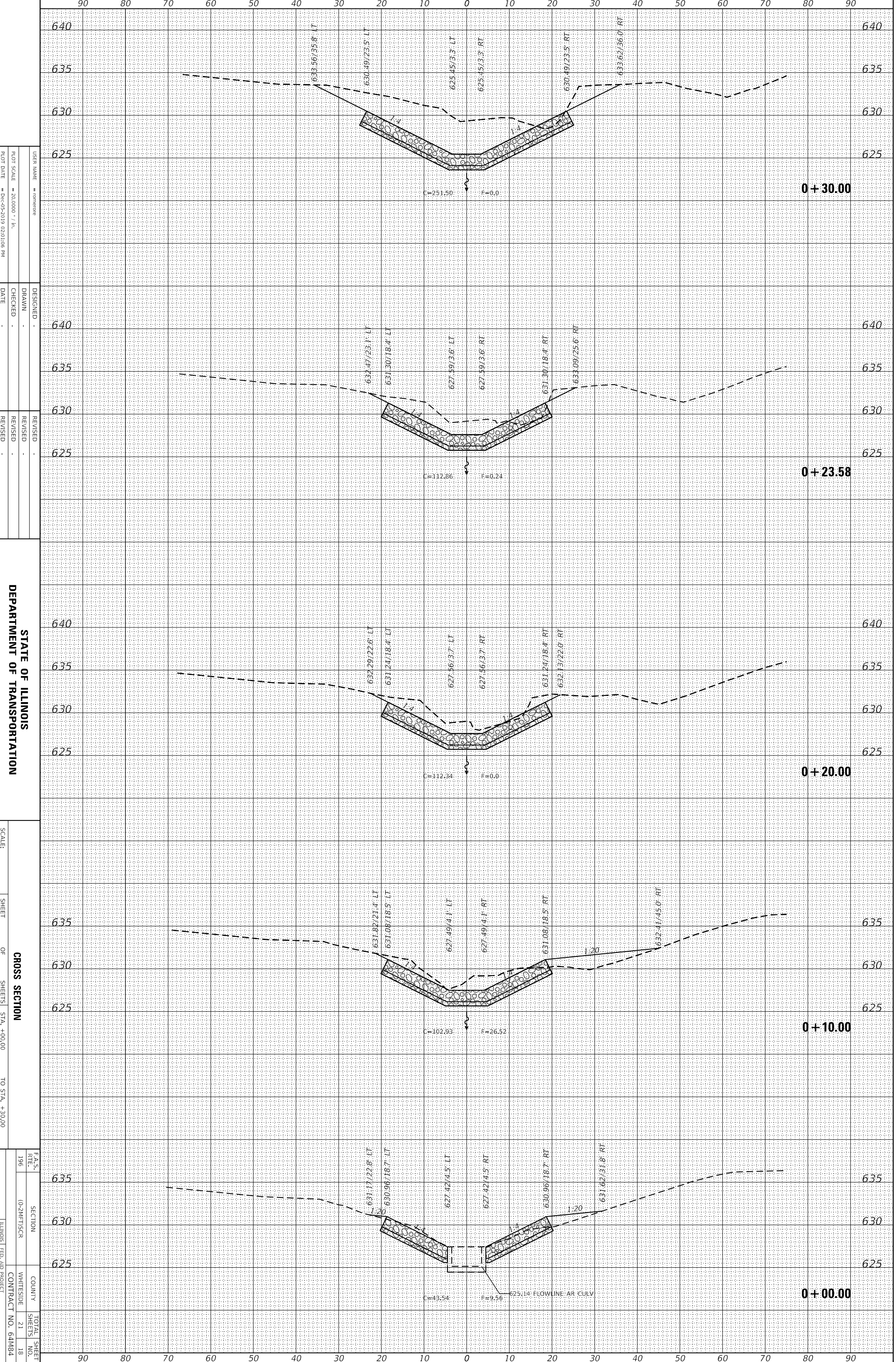
| | | | | | | |
|--------------------|--------------------------------|---|-------------|-----------|--------------------|-----------|
| REVISED - 10-03-11 | REGION 2 / DISTRICT 2 STANDARD | F.A.S. RTE. | SECTION | COUNTY | TOTAL SHEETS | SHEET NO. |
| REVISED - | | 196 | (0-2MFT)SCR | WHITESIDE | 21 | 17 |
| REVISED - | | SCALE: 100,000' / 1" SHEET 17 OF 17 SHEETS STA. TO STA. | | | CONTRACT NO. 64M84 | |
| REVISED - | | ILLINOIS FED. AID PROJECT | | | | |

FILE NAME: p:\cadd\mns\mns\illinois\pwr\pwr\DOT\Documents\DOT Offices\District 2\Projects\616184\Program Development\Studies & Plans\Design\CADD\CAD\Drawings\02_616184\shc-02_5T17.dgn
PLOT DATE: 08-02-2013 03:27:00 PM

| | | | |
|-----------------|---------------------|----------|------------|
| ORIGINAL SURVEY | SURVEYED _____ | BY _____ | DATE _____ |
| NOTE BOOK | PLOTTED _____ | | |
| | TEMPLATE _____ | | |
| | AREAS _____ | | |
| | AREAS CHECKED _____ | | |

| | | | |
|--------------|---------------------|----------|------------|
| FINAL SURVEY | SURVEYED _____ | BY _____ | DATE _____ |
| NOTE BOOK | PLOTTED _____ | | |
| | TEMPLATE _____ | | |
| | AREAS _____ | | |
| | AREAS CHECKED _____ | | |

MODEL: Default
 FILE NAME: p:\planroom.dot\Illinois.gov\PWIDOT\Documents\DOT Offices\District 2\Projects\64M84\Program Development\Studies & Plans\Design\CADD\CADsheets\D2_64M84-sht-xssht.dgn



STATE OF ILLINOIS
 DEPARTMENT OF TRANSPORTATION

CROSS SECTION
 OF SHEETS STA. +00.00 TO STA. +30.00

| | | | |
|-------------|------------|---------------------------|-----------------|
| F.A.S. RITE | SECTION | COUNTY | TOTAL SHEET NO. |
| 196 | (0-24M)5CR | WHITESIDE | 21 |
| | | CONTRACT NO. 64M84 | 18 |
| | | ILLINOIS FED. AID PROJECT | |

USER NAME = tomereve
 PLOT SCALE = 20.0000" = 1.0000'
 PLOT DATE = Dec-05-2019 02:01:06 PM

DESIGNED -
 DRAWN -
 CHECKED -
 DATE -

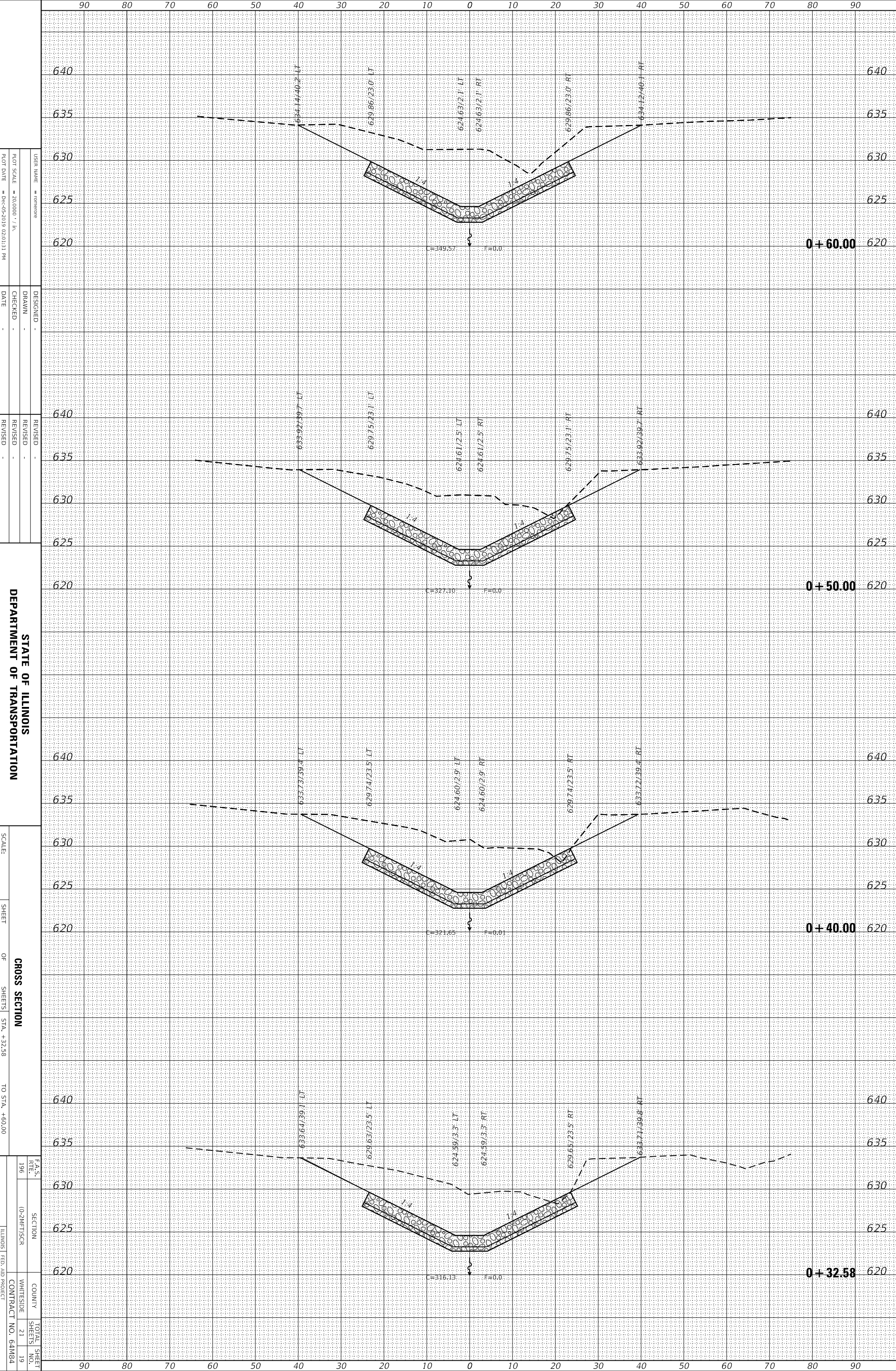
REVISED -
 REVISED -
 REVISED -
 DATE -

REVISED -
 REVISED -
 REVISED -
 DATE -

| | | | |
|-----------------|---------------|----|------|
| ORIGINAL SURVEY | SURVEYED | BY | DATE |
| NOTE BOOK | PLOTTED | | |
| | TEMPLATE | | |
| | AREAS | | |
| | AREAS CHECKED | | |

| | | | |
|--------------|---------------|----|------|
| FINAL SURVEY | SURVEYED | BY | DATE |
| NOTE BOOK | PLOTTED | | |
| | TEMPLATE | | |
| | AREAS | | |
| | AREAS CHECKED | | |

MODEL: Default
 FILE NAME: p:\work\planroom.dot\illinois.gov\PWIDOT\Documents\DOT Offices\District 2\Projects\64M84\Program Development\Studies & Plans\Design\CADD\CADsheets\D2_64M84-sht-xssht.dgn



STATE OF ILLINOIS
 DEPARTMENT OF TRANSPORTATION

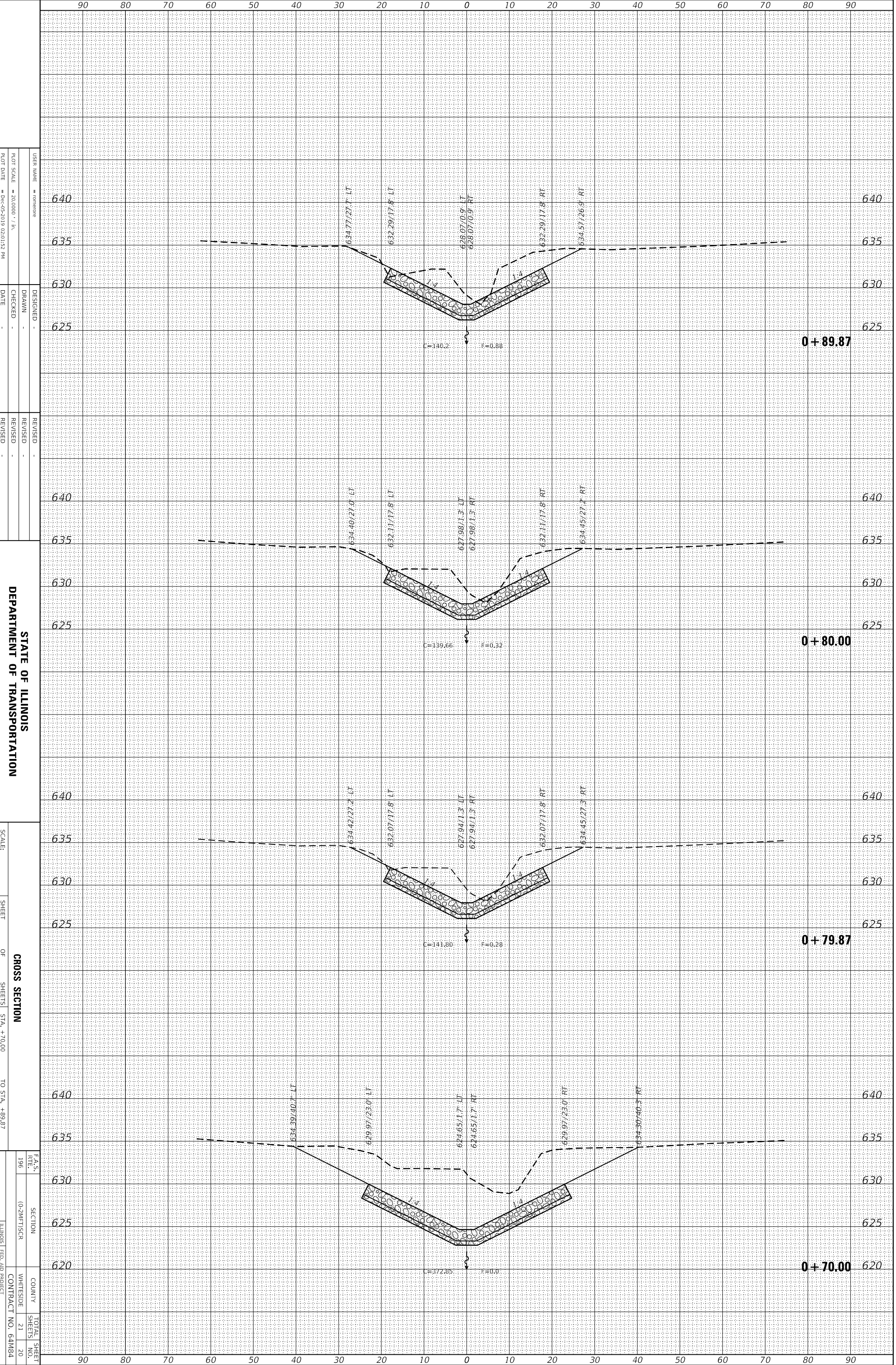
CROSS SECTION
 SHEET OF SHEETS STA. +32.58 TO STA. +60.00

| | | | |
|-------------|--------------|---------------------------|------------------------|
| F.A.S. RITE | SECTION | COUNTY | TOTAL SHEET SHEETS NO. |
| 196 | (0-24MFT)SCR | WHITESIDE | 21 |
| | | CONTRACT NO. 64M84 | 19 |
| | | ILLINOIS FED. AID PROJECT | |

| | | | |
|-----------------|---------------------|----------|------------|
| ORIGINAL SURVEY | SURVEYED _____ | BY _____ | DATE _____ |
| NOTE BOOK | PLOTTED _____ | | |
| | TEMPLATE _____ | | |
| | AREAS _____ | | |
| | AREAS CHECKED _____ | | |

| | | | |
|--------------|---------------------|----------|------------|
| FINAL SURVEY | SURVEYED _____ | BY _____ | DATE _____ |
| NOTE BOOK | PLOTTED _____ | | |
| | TEMPLATE _____ | | |
| | AREAS _____ | | |
| | AREAS CHECKED _____ | | |

MODEL: Default
 FILE NAME: p:\planroom\dot\illinois.gov\PWIDOT\Documents\DOT Offices\District 2\Projects\64M84\Program Development\Studies & Plans\Design\CADD\CADsheets\D2_64M84-sht-xssht.dgn



USER NAME = tomere
 PLOT SCALE = 20.0000' = 1/4" = 1/4" = 1/4"
 PLOT DATE = Dec-05-2019 02:01:52 PM

DESIGNED -
 DRAWN -
 CHECKED -
 DATE -

REVISED -
 REVISED -
 REVISED -
 DATE -

STATE OF ILLINOIS
 DEPARTMENT OF TRANSPORTATION

SCALE:

SHEET

CROSS SECTION

OF

SHEETS STA. +70.00 TO STA. +89.87

F.A.S. RITE

SECTION (0-24MFT) SCR

COUNTY WHITESIDE

CONTRACT NO. 64M84

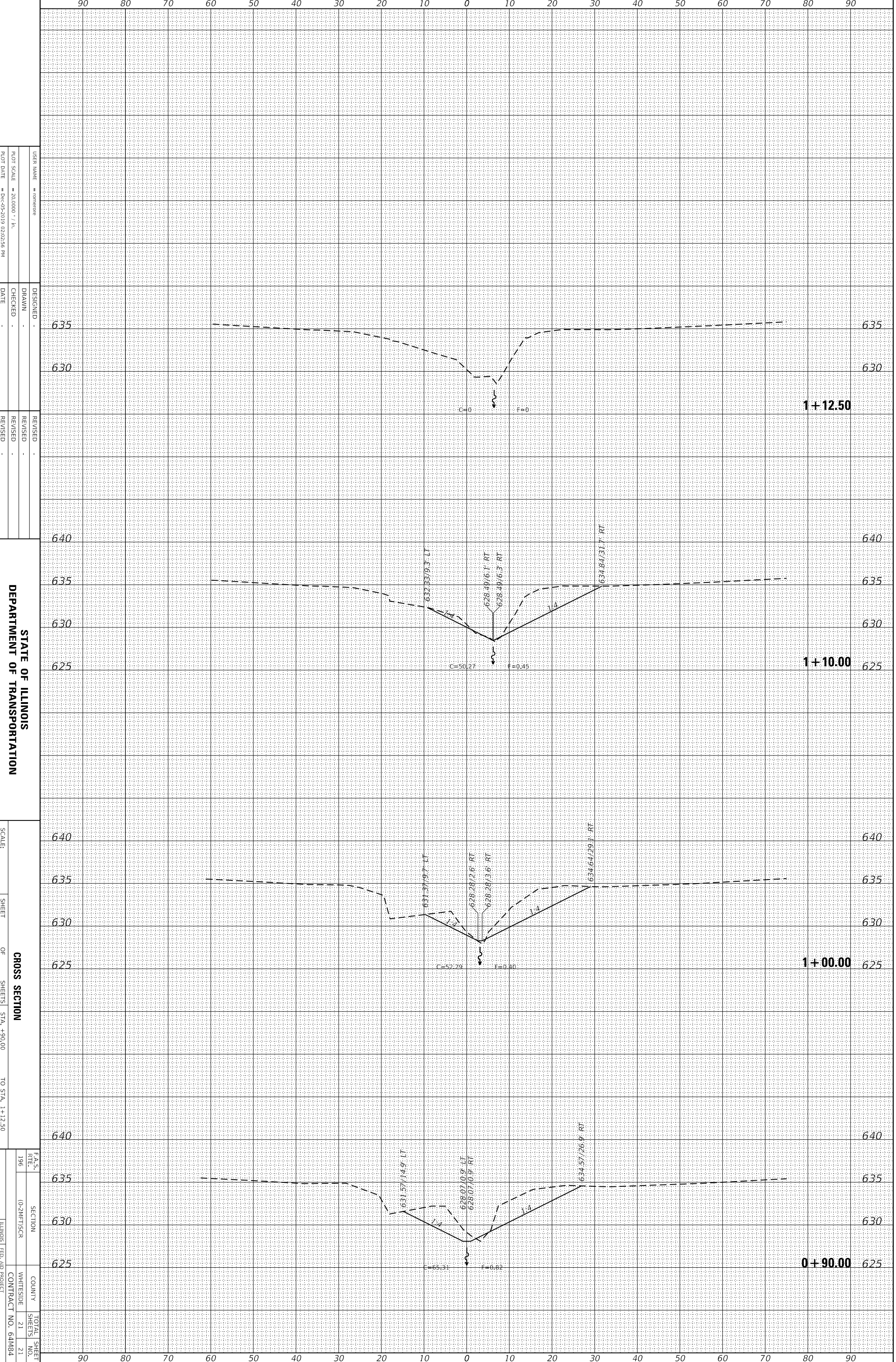
ILLINOIS FED. AID PROJECT

TOTAL SHEET SHEETS NO. 21

| | | | |
|-----------------|---------------------|----------|------------|
| ORIGINAL SURVEY | SURVEYED _____ | BY _____ | DATE _____ |
| NOTE BOOK | PLOTTED _____ | | |
| | TEMPLATE _____ | | |
| | AREAS _____ | | |
| | AREAS CHECKED _____ | | |

| | | | |
|--------------|---------------------|----------|------------|
| FINAL SURVEY | SURVEYED _____ | BY _____ | DATE _____ |
| NOTE BOOK | PLOTTED _____ | | |
| | TEMPLATE _____ | | |
| | AREAS _____ | | |
| | AREAS CHECKED _____ | | |

MODEL: Default
 FILE NAME: p:\planroom\dot\illinois.gov\PIWIDOT\Documents\DOT Offices\District 2\Projects\64M84\Program Development\Studies & Plans\Design\CADD\CADsheets\D2_64M84-sht-xssht.dgn



USER NAME = tomereve
 PLOT SCALE = 20.0000' / in.
 PLOT DATE = Dec-05-2019 02:02:56 PM

DESIGNED -
 DRAWN -
 CHECKED -
 DATE -

REVISED -
 REVISED -
 REVISED -

STATE OF ILLINOIS
 DEPARTMENT OF TRANSPORTATION

SCALE:

SHEET

CROSS SECTION

OF SHEETS STA. +90.00 TO STA. 1+12.50

| | | | |
|-------------|--------------|---------------------------|-----------------|
| F.A.S. RTE. | SECTION | COUNTY | TOTAL SHEET NO. |
| 196 | (0-2)MFT/SCR | WHITESIDE | 21 |
| | | CONTRACT NO. 64M84 | 21 |
| | | ILLINOIS FED. AID PROJECT | |