

STATE OF ILLINOIS
DEPARTMENT OF TRANSPORTATION

F.A.S. ROUTE	SECTION	COUNTY	TOTAL SHEETS	SHEET NO.
301	114RS-2	GRUNDY	19	1
		ILLINOIS	CONTRACT NO. 66A82	

INDEX OF SHEETS

- 1 COVER SHEET
- 2 GENERAL NOTES
- 3-6 SUMMARY OF QUANTITIES
- 7-8 TYPICAL SECTIONS
- 9 PSM TABLE
- 10 LINE DIAGRAM
- 11-13 SCHEDULES
- 14-19 DETAILS

LIST OF ILLINOIS DOT HIGHWAY STANDARDS

- 000001-07 STANDARD SYMBOLS, ABBREVIATIONS AND PATTERNS
- 001006 DECIMAL OF AN INCH AND OF A FOOT
- 405201 01 MAILBOX TURNOUT
- 630001 12 STEEL PLATE BEAM GUARDRAIL
- 630101 10 STRONG POST GUARDRAIL ATTACHED TO CULVERT
- 630106-02 LONG-SPAN GUARDRAIL OVER CULVERT
- 642006 SHOULDER RUMBLE STRIPS, 8 INCH
- 667101-02 PERMANENT SURVEY MARKERS
- 701001-02 OFF-ROAD OPERATIONS 2L, 2W, MORE THAN 15' (4.5 m) AWAY
- 701006-05 OFF-ROAD OPERATIONS 2L, 2W, 15' (4.5 m) TO 24' (600 mm) FROM PAVEMENT EDGE
- 701301-04 LANE CLOSURE, 2L, 2W, SHORT TIME OPERATIONS
- 701306-04 LANE CLOSURE, 2L, 2W, SLOW MOVING OPERATIONS DAY ONLY FOR SPEEDS ≥ 45 MPH
- 701311-03 LANE CLOSURE, 2L, 2W, MOVING OPERATIONS - DAY ONLY
- 701501-06 URBAN LANE CLOSURE, 2L, 2W, UNDIVIDED
- 701901-08 TRAFFIC CONTROL DEVICES
- 781001-04 TYPICAL APPLICATIONS RAISED REFLECTIVE PAVEMENT MARKERS

**PROPOSED
HIGHWAY PLANS**

FAS ROUTE 301 (IL 113)
SECTION (114)RS-2
PROJECT STP-H641(283)
3P MILLING & RS (DESIGNED OVERLAY)
GRUNDY COUNTY



FUNCTIONAL CLASSIFICATION
MINOR ARTERIAL
2017 ADT=6,150 PV=92.44%
SU=4.47% MU=3.09%

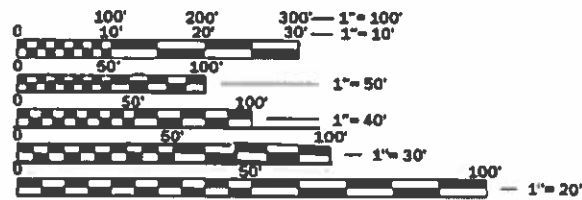
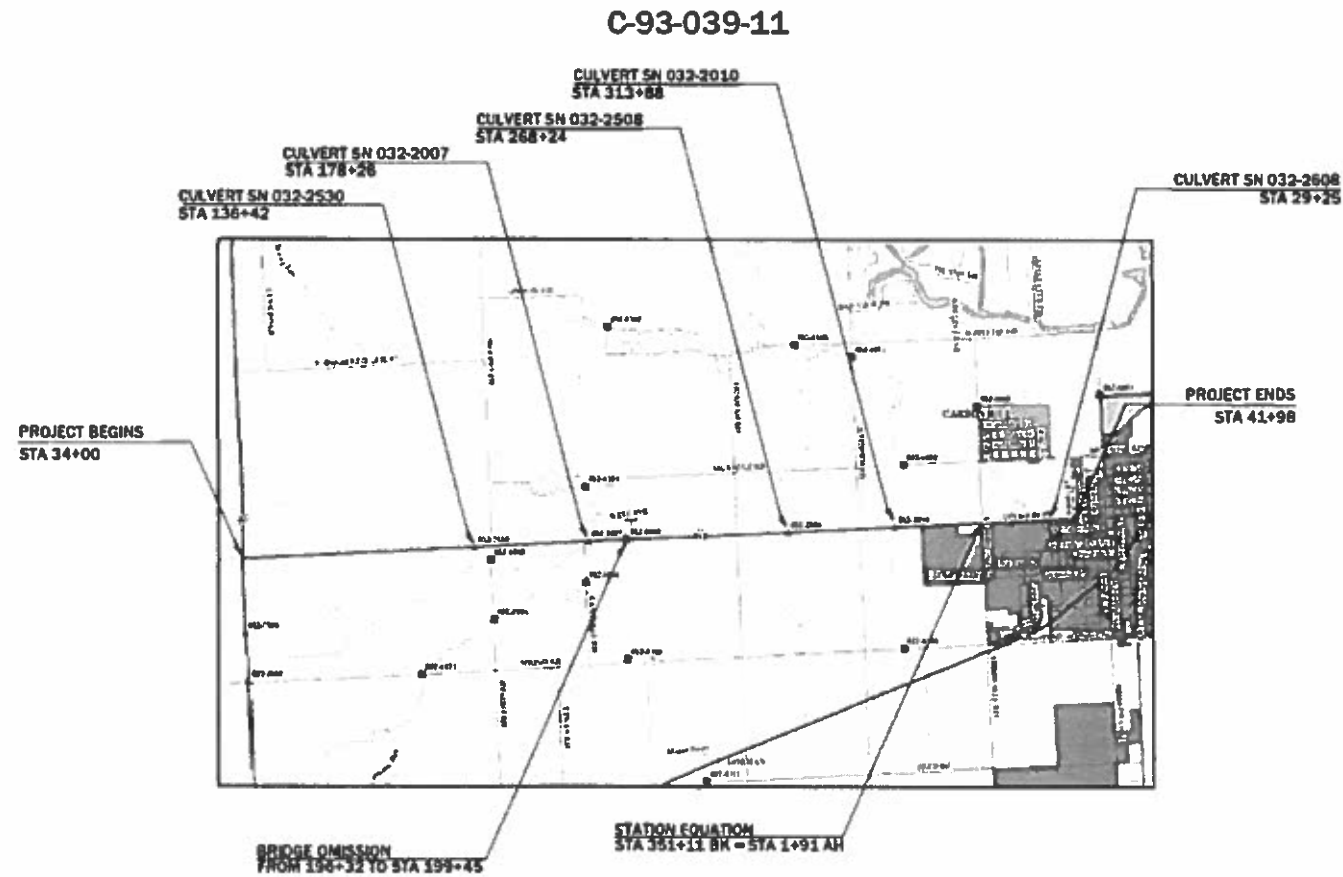
STATE OF ILLINOIS
DEPARTMENT OF TRANSPORTATION

SUBMITTED 12-13 2019
Mason Adams
REGIONAL ENGINEER

Janis Etk
ENGINEER OF DESIGN AND ENVIRONMENT

Janis Etk
DIRECTOR OF HIGHWAYS PROJECT IMPLEMENTATION

**PRINTED BY THE AUTHORITY
OF THE STATE OF ILLINOIS**



FULL SIZE PLANS HAVE BEEN PREPARED USING STANDARD ENGINEERING SCALES. REDUCED SIZED PLANS WILL NOT CONFORM TO STANDARD SCALES. IN MAKING MEASUREMENTS ON REDUCED PLANS, THE ABOVE SCALES MAY BE USED.

J.U.L.I.E.
JOINT UTILITY LOCATION INFORMATION FOR EXCAVATION
1-800-892-0123
OR 811

PROJECT ENGINEER: JOE KANNEL, P.E.
UNIT CHIEF: ARLENE OTERO-FEBUS
DISTRICT 3 NO. (815) 434-6131
CONTRACT NO. 66A82

GROSS LENGTH = 35534 FT. = 6.73 MILE
NET LENGTH = 35434 FT. = 6.71 MILE

GENERAL NOTES

THE THICKNESS OF HMA SHOWN ON THE PLANS IS THE NOMINAL THICKNESS. DEVIATIONS FROM THE NOMINAL THICKNESS WILL BE PERMITTED WHEN SUCH DEVIATIONS OCCUR DUE TO IRREGULARITIES IN THE EXISTING SURFACE OR BASE ON WHICH THE HMA IS PLACED.

THE ENGINEER WILL BE THE SOLE JUDGE CONCERNING CURING TIME FOR THE VARIOUS HMA LIFTS.

ON EXISTING PAVEMENT WHICH MAY BE SUPERELEVATED, THE NEW HMA PAVEMENT SHALL BE BUILT WITH THE SAME SUPERELEVATION UNLESS NEW SUPERELEVATION RATES ARE GIVEN ON THE PLANS.

ANY REFERENCE TO A STANDARD IN THESE PLANS SHALL BE INTERPRETED TO MEAN THE EDITION AS INDICATED BY THE SUBNUMBER SHOWN IN THE LIST OF STANDARDS OR THE COPY INCLUDED IN THESE PLANS.

THE FOLLOWING RATES OF APPLICATION HAVE BEEN USED IN CALCULATING PLAN QUANTITIES:

GRANULAR MATERIALS	2.05	TONS / CU YD
HMA RESURFACING	112	LBS / SQ YD / IN
SHORT TERM PAVEMENT MARKING	10	FT /100 FT OF APPLICATION
MIX FOR CRACKS, JTS & FLGWYS	0.0003	TONS / SQ YD
BINDER (HAND METHOD)	0.0005	TONS / SQ YD

MEMBERS OF JULIE KNOWN TO BE WITHIN THE LIMITS OF THE IMPROVEMENT ARE: AT&T, COMED, COMCAST, NICOR, VILLAGE OF COAL CITY, BP PIPELINES

ALL DAMAGE TO DEPARTMENT OWNED UNDERGROUND FACILITIES CAUSED BY THE CONTRACTOR SHALL BE REPAIRED.

COMMITMENTS

LOCATIONS:	ENTIRE PROJECT	ENTIRE PROJECT	ENTIRE PROJECT
MIXTURE USE(S):	HMA SURFACE	HMA BINDER	INCIDENTAL HMA
BINDER GRADE (PG):	PG 64-22	PG 64-22	PG 64-22
DESIGN AIR VOIDS:	4.0% @ N50	4.0% @ N50	4.0% @ N50
MIXTURE COMPOSITION: (MIXTURE GRADATION)	IL 9.5	IL 9.5	IL 9.5
FRICTION AGGREGATE:	MIXTURE D		
MIXTURE WEIGHT:	112.0 LB/SY/IN	112.0 LB/SY/IN	112.0 LB/SY/IN
QUALITY MANAGEMENT PROGRAM:	QCP	QCP	QCQA
SUBLOT SIZE:	1000 TONS	1000 TONS	NA
DENSITY TEST METHOD:	CORES	CORES	SATISFACTION OF ENGINEER

STATE OF ILLINOIS
DEPARTMENT OF TRANSPORTATION
DISTRICT THREE
AS BUILT INFORMATION

SUPERVISING CONSTRUCTION FIELD ENGINEER

RESIDENT ENGINEER / TECHNICIAN

START & END DATES
OF CONSTRUCTION:

INSPECTORS:

STATE OF ILLINOIS
DEPARTMENT OF TRANSPORTATION
DISTRICT THREE

PREPARED BY: Don Brunk
DISTRICT STUDIES & PLANS ENGINEER

DATE: 12/13/19

EXAMINED BY: [Signature]
DISTRICT CONSTRUCTION ENGINEER

[Signature]
DISTRICT MATERIALS ENGINEER

[Signature]
DISTRICT OPERATIONS ENGINEER

MODEL: \\MODELM\A\FILES
 FILE: \\MODELM\A\FILES\work\shilob\shilob\00247031D366A82-shilob.dgn

CODE NO.	ITEM	UNIT	TOTAL QUANTITY	CONSTRUCTION CODE	
				FUND TYPE FEDERAL	
				ROADWAY 0005	ROADWAY 0005
				RURAL	URBAN
				80% FED	20% STATE
21400100	GRADING AND SHAPING DITCHES	FOOT	3200	2600	600
40600290	BITUMINOUS MATERIALS (TACK COAT)	POUND	85634	65202	20432
40600400	MIXTURE FOR CRACKS, JOINTS, AND FLANGEWAYS	TON	36.9	28.1	8.8
40600900	HOT-MIX ASPHALT BINDER COURSE (HAND METHOD), N50	TON	61.7	47.2	14.5
40600982	HOT-MIX ASPHALT SURFACE REMOVAL - BUTT JOINT	SQ YD	1345	858	487
40600990	TEMPORARY RAMP	SQ YD	703	443	260
40602978	HOT-MIX ASPHALT BINDER COURSE, IL- 9.5, N50	TON	13790	10549	3241
40604060	HOT-MIX ASPHALT SURFACE COURSE, IL-9.5, MIX "D", N50	TON	12067	9230	2837
40800050	INCIDENTAL HOT-MIX ASPHALT SURFACING	TON	820	529	291
44000164	HOT-MIX ASPHALT SURFACE REMOVAL, 3 3/4"	SQ YD	123140	94189	28951
48102100	AGGREGATE WEDGE SHOULDER, TYPE B	TON	1012	949	63
54213657	PRECAST REINFORCED CONCRETE FLARED END SECTIONS 12"	EACH	4		4
60260100	INLETS TO BE ADJUSTED	EACH	1		1
* 63000001	STEEL PLATE BEAM GUARDRAIL, TYPE A, 6 FOOT POSTS	FOOT	725	550	175

* = SPECIALTY ITEM

USER NAME = OTEROFEBUSA DESIGNED - _____ DRAWN - _____ PLOT SCALE = 100.0000 ' / in. CHECKED - _____ PLOT DATE = 12/17/2019 DATE - _____ REVISED - _____	DESIGNED - _____ REVISED - _____ CHECKED - _____ REVISED - _____ DATE - _____ REVISED - _____	STATE OF ILLINOIS DEPARTMENT OF TRANSPORTATION	SUMMARY OF QUANTITIES SCALE: _____ SHEET 1 OF 4 SHEETS STA. _____ TO STA. _____	F.A.S. RTE. 301 SECTION (114)RS-2 COUNTY GRUNDY TOTAL SHEETS 19 SHEET NO. 3 CONTRACT NO. 66A82 ILLINOIS FED. AID PROJECT
---	--	---	---	--

MODEL: Default
 FILE: \\nlsdc-pub\pubroom\data\illinois.gov\PIWDOT\Documents\DOT_Offices\District_3\Projects\ID366A82\CADDData\ID366A82-rh-500.dgn

CODE NO.	ITEM	UNIT	TOTAL QUANTITY	CONSTRUCTION CODE	
				FUND TYPE FEDERAL	
				ROADWAY 0005 RURAL	ROADWAY 0005 URBAN
* 6300030	STRONG POST GUARDRAIL ATTACHED TO CULVERT	FOOT	75	75	
* 63000360	LONG-SPAN GUARDRAIL OVER CULVERT, 18 FT 9 IN SPAN	FOOT	88	88	
* 63000370	LONG-SPAN GUARDRAIL OVER CULVERT, 25 FT SPAN	FOOT	200	100	100
* 63100167	TRAFFIC BARRIER TERMINAL, TYPE 1 (SPECIAL) TANGENT	EACH	16	12	4
63200310	GUARDRAIL REMOVAL	FOOT	3032	2109	923
64200108	SHOULDER RUMBLE STRIPS, 8 INCH	FOOT	57560	54706	2854
* 66700205	PERMANENT SURVEY MARKERS, TYPE 1	EACH	39	32	7
67100100	MOBILIZATION	L SUM	1	0.78	0.22
70100460	TRAFFIC CONTROL AND PROTECTION, STANDARD 701306	L SUM	1	0.78	0.22
70300100	SHORT TERM PAVEMENT MARKING	FOOT	6181	4831	1350
70300150	SHORT TERM PAVEMENT MARKING REMOVAL	SQ FT	2060	1611	449
* 78000100	THERMOPLASTIC PAVEMENT MARKING - LETTERS AND SYMBOLS	SQ FT	262	47	215
* 78000200	THERMOPLASTIC PAVEMENT MARKING - LINE 4"	FOOT	11503	2298	9205
* 78000500	THERMOPLASTIC PAVEMENT MARKING - LINE 8"	FOOT	1246	404	842

*= SPECIALTY ITEM

USER NAME = NOLASCOCJ	DESIGNED -	REVISED -	STATE OF ILLINOIS DEPARTMENT OF TRANSPORTATION	SUMMARY OF QUANTITIES			F.A.S. RTE.	SECTION	COUNTY	TOTAL SHEETS	SHEET NO.
PLOT SCALE = 100.0000 ' / in.	DRAWN -	REVISED -					301	(114)RS-2	GRUNDY	19	4
PLOT DATE = 12/17/2019	CHECKED -	REVISED -		SCALE: SHEET 2 OF 4 SHEETS STA. TO STA.			CONTRACT NO. 66A82				
	DATE -	REVISED -					ILLINOIS FED. AID PROJECT				

MODEL: Default
 FILE: \\nls-px1\pub\room\data\illinois\pwr\DOT\Documents\DOT_Offices\Dir\ctc_3\Project\ID366A82\CADD\table\ID366A82-ht-500.dgn

CODE NO.	ITEM	UNIT	TOTAL QUANTITY	CONSTRUCTION CODE	
				FUND TYPE FEDERAL	
				ROADWAY 0005 RURAL	ROADWAY 0005 URBAN
				80% FED 20% STATE	
* 78000600	THERMOPLASTIC PAVEMENT MARKING - LINE 12"	FOOT	968		968
* 78000650	THERMOPLASTIC PAVEMENT MARKING - LINE 24"	FOOT	245	100	145
* 78001110	PAINT PAVEMENT MARKING - LINE 4"	FOOT	129554	107482	22072
* 78001130	PAINT PAVEMENT MARKING - LINE 6"	FOOT	17058	13146	3912
* 78100100	RAISED REFLECTIVE PAVEMENT MARKER	EACH	661	367	294
* 78200005	GUARDRAIL REFLECTORS, TYPE A	EACH	24	18	6
78300200	RAISED REFLECTIVE PAVEMENT MARKER REMOVAL	EACH	661	367	294
X0327809	LINEAR DELINEATOR PANELS, 4 INCH	EACH	24	18	6
X4401198	HOT-MIX ASPHALT SURFACE REMOVAL, VARIABLE DEPTH	SQ YD	5574	3599	1975
X5537800	STORM SEWERS TO BE CLEANED 12"	FOOT	182		182
X5537900	STORM SEWERS TO BE CLEANED 15"	FOOT	59		59
X5610802	PIPE SEALS	FOOT	8		8
Z0005300	BOX CULVERTS TO BE CLEANED	EACH	1		1
Z0030850	TEMPORARY INFORMATION SIGNING	SQ FT	42	21	21

*= SPECIALTY ITEM

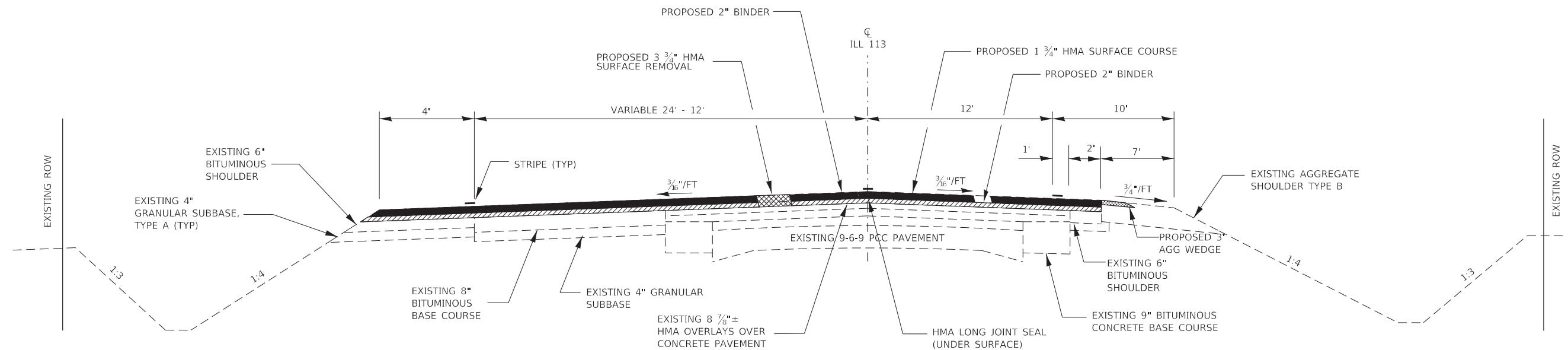
USER NAME = NOLASCOCJ	DESIGNED -	REVISED -	STATE OF ILLINOIS DEPARTMENT OF TRANSPORTATION	SUMMARY OF QUANTITIES			F.A.S. RTE.	SECTION	COUNTY	TOTAL SHEETS	SHEET NO.
PLOT SCALE = 100.0000 ' / in.	DRAWN -	REVISED -					301	(114)RS-2	GRUNDY	19	5
PLOT DATE = 12/17/2019	CHECKED -	REVISED -		SCALE: SHEET 3 OF 4 SHEETS STA. TO STA.			CONTRACT NO. 66A82				
	DATE -	REVISED -					ILLINOIS FED. AID PROJECT				

MODEL: Default
 FILE: \\nlsdot-pub\pubroom\data\illinois.gov\PWIDOT\Documents\DOT_Offices\District_3\Projects\1366A82_CADD\data\1366A82-1ht-500.dgn

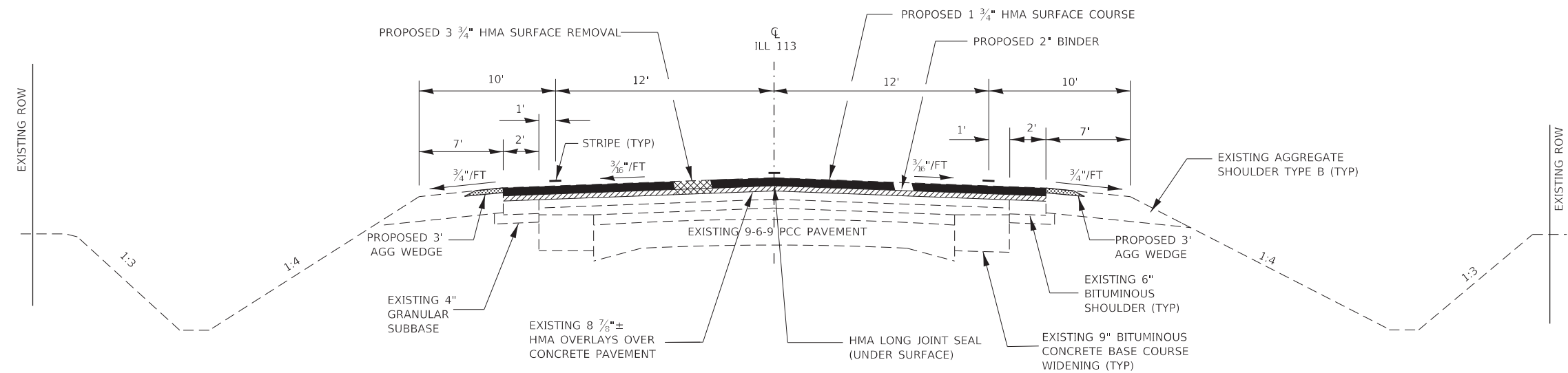
CODE NO.	ITEM	UNIT	TOTAL QUANTITY	CONSTRUCTION CODE	
				FUND TYPE FEDERAL	
				ROADWAY 0005	ROADWAY 0005
				RURAL	URBAN
				80% FED 20% STATE	
Z0033700	LONGITUDINAL JOINT SEALANT	FOOT	35405	27353	8052
∅ Z0076600	TRAINEES	HOUR	2000	2000	
Z0034105	MATERIAL TRANSFER DEVICE	TON	25857	19779	6078
∅ Z0076604	TRAINEES - TRAINING PROGRAM GRADUATE	HOUR	2000	2000	
Z0055300	RUMBLE STRIP	EACH	3	3	

∅ 0042

USER NAME = NOLASCOCJ	DESIGNED -	REVISED -	STATE OF ILLINOIS DEPARTMENT OF TRANSPORTATION	SUMMARY OF QUANTITIES				F.A.S. RTE.	SECTION	COUNTY	TOTAL SHEETS	SHEET NO.
PLOT SCALE = 100.0000' / in.	DRAWN -	REVISED -						301	(114)RS-2	GRUNDY	19	6
PLOT DATE = 12/13/2019	CHECKED -	REVISED -		SCALE: SHEET 4 OF 4 SHEETS STA. TO STA.				CONTRACT NO. 66A82				
	DATE -	REVISED -		ILLINOIS FED. AID PROJECT								



TYPICAL SECTION 1
 STA 34+00 TO STA 38+85.49



TYPICAL SECTION 2

STA 38+85.50 TO STA 196+31.69
 STA 202+42.74 TO STA 324+93.37 LT
 STA 202+42.74 TO STA 341+04.26 RT

BRIDGE OMISSION - SN 032-0098
 STA 196+31.69 TO STA 199+44.70
 (STATIONS INCLUDE BRIDGE APPROACHES)

MODEL: Default
 FILE: h:\mfc_projects\pilot\pilot.dwg
 PROJECT: I:\DOT\Documents\DOT_Offices\Illinois\Projects\10366A82_CADD\10366A82-218-sytypical.dgn

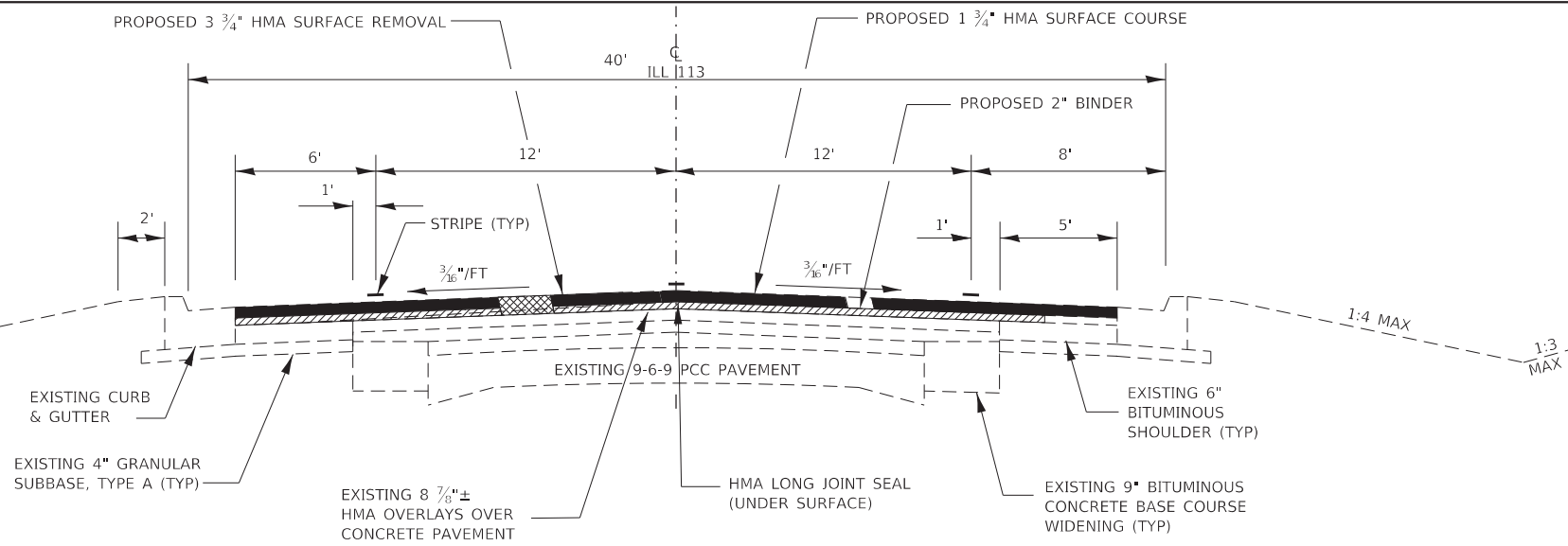
USER NAME = NOLASCOCJ	DESIGNED -	REVISED -
	DRAWN -	REVISED -
PLOT SCALE = 100,0000' / in.	CHECKED -	REVISED -
PLOT DATE = 12/13/2019	DATE -	REVISED -

**STATE OF ILLINOIS
 DEPARTMENT OF TRANSPORTATION**

TYPICAL SECTION

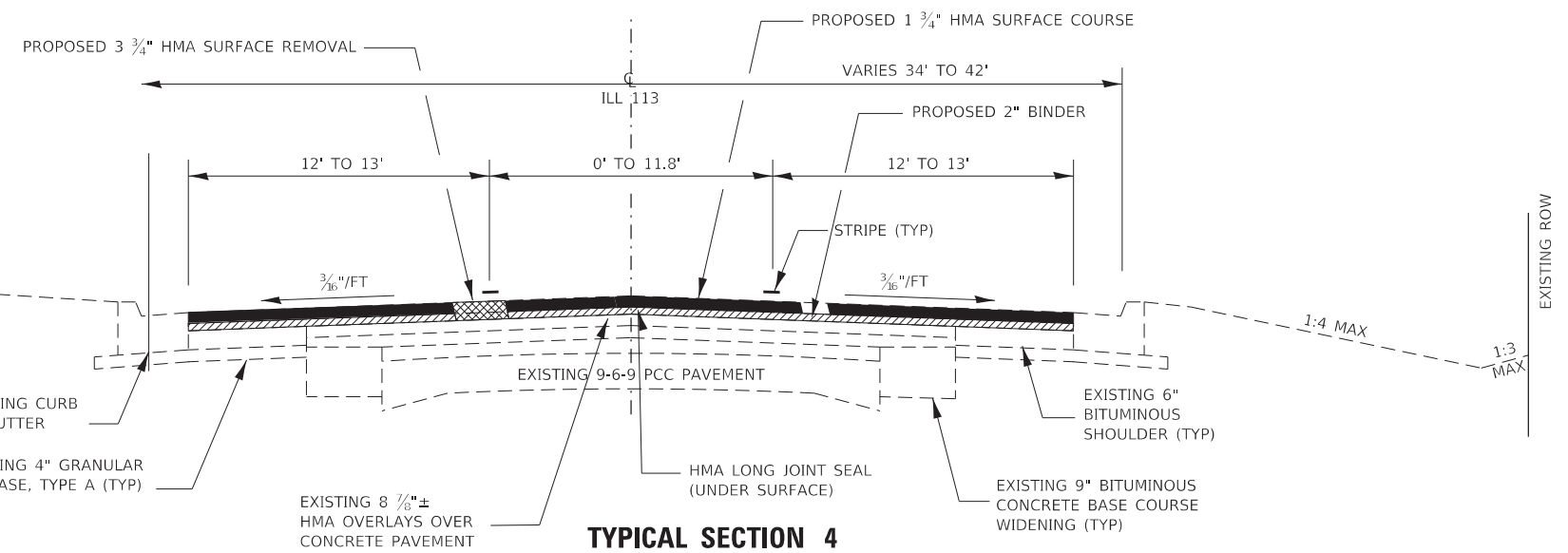
SCALE: SHEET 1 OF 2 SHEETS STA. TO STA.

F.A.S. RTE.	SECTION	COUNTY	TOTAL SHEETS	SHEET NO.
301	(114)RS-2	GRUNDY	19	7
CONTRACT NO. 66A82				
ILLINOIS FED. AID PROJECT				



TYPICAL SECTION 3

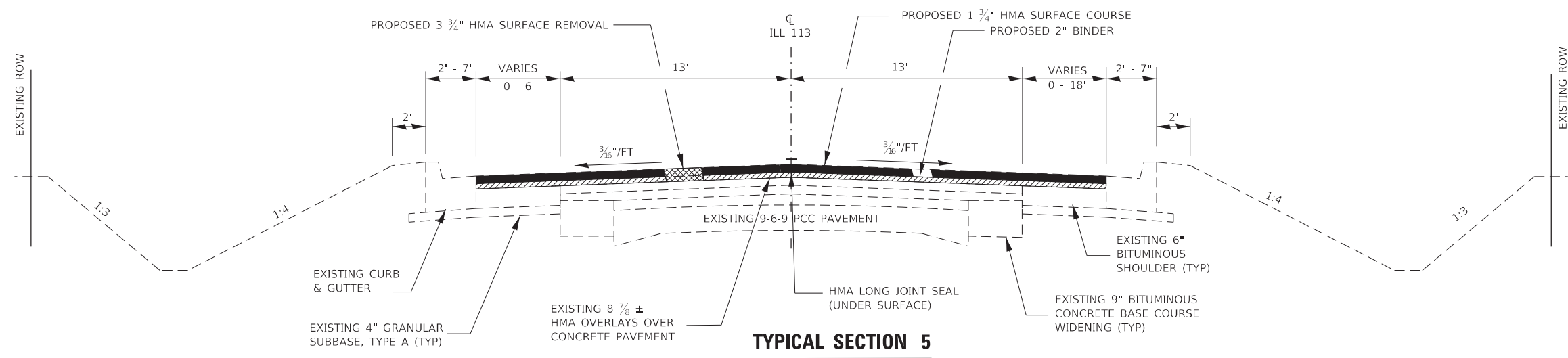
STA 324+93.37 LT TO STA 344+77.95
 STA 341+04.26 RT TO STA 344+77.95



TYPICAL SECTION 4

STA 344+77.95 TO STA 349+96.65
 STA 3+31.55 TO STA 8+26.63

STATION EQUATION
 STA 351+11 BK = STA 1+91 AH



TYPICAL SECTION 5

STA 8+26.88 TO STA 41+98

MODEL: Default
 FILE: h:\mfc_p\pub\barroom.dwg
 PROJECT: I:\Projects\114\114RS-2\114RS-2.dwg
 DATE: 12/13/2019

USER NAME = NOLASCOCJ	DESIGNED -	REVISED -
	DRAWN -	REVISED -
PLOT SCALE = 100.0000' / in.	CHECKED -	REVISED -
PLOT DATE = 12/13/2019	DATE -	REVISED -

STATE OF ILLINOIS
DEPARTMENT OF TRANSPORTATION

TYPICAL SECTION			
SCALE:	SHEET 2	OF 2 SHEETS	STA. TO STA.

F.A.S. RTE.	SECTION	COUNTY	TOTAL SHEETS	SHEET NO.
301	(114)RS-2	GRUNDY	19	8
CONTRACT NO. 66A82				
ILLINOIS FED. AID PROJECT				

MODEL: Default
 FILE: \\nls-px1\pub\lansroom.dwg\Illinois.gov\PI\DOT\Documents\DOT - Offices\Dist\ct_3\projects\0366A82_CADD\0366A82-2ht-cy\table.dgn

PERMANENT SURVEY MARKERS					
GPS NUMBER	DESCRIPTION	EXISTING MONUMENT TYPE	PROPOSED MONUMENT TYPE	MONUMENT RECORD TO BE RECORDED	RESPONSIBILITY
047460	SW CORNER SECTION 34-33-7E	BRASS DISK	TYPE 1	YES	1
A113201	N QTR CORNER SECTION 3-32-7E	BRASS DISK	TYPE 1	YES	1
A113027	S QTR CORNER SECTION 34-33-7E	BRASS DISK	TYPE 1	YES	1
API1850	PI STA 1+850.000	BRASS DISK	TYPE 1	NO	1
A113024	NW CORNER SECTION 2-32-7E	BRASS DISK	TYPE 1	YES	1
A113025	SW CORNER SECTIN 35-33-7E	BRASS DISK	TYPE 1	YES	1
API3000	PI STA 3+000.000	BRASS DISK	TYPE 1	NO	1
A113023	N QTR CORNER SECTION 2-32-7E	BRASS DISK	TYPE 1	YES	1
A113022	S QTR CORNER SECTION 35-33-7E	BRASS DISK	TYPE 1	YES	1
A113021	NW CORNER SECTION 1-32-7E	-	TYPE 1	YES	1
B113021	MONUMENT OF UNKNOWN ORIGIN RESET OF NW CORNER SECTION 1-32-7E	COTTON SPINDLE	MAG NAIL	YES WITH A113021	1
API4250	PI STA 4+250.000	BRASS DISK	TYPE 1	NO	1
A113019	SW CORNER SECTION 36-33-7E	BRASS DISK	TYPE 1	YES	1
APC4915883	PC STA 4-915.883	BRASS DISK	TYPE 1	NO	1
113015	N QTR CORNER SECTION 1-32-7E	BRASS DISK	TYPE 1	YES	1
113016	S QTR CORNER SECTION 36-33-7E	BRASS DISK	TYPE 1	YES	1
	NOTE: PI STA 5+068.272 WILL NOT BE SET.				
APT5220644	PT STA 5+220.664	BRASS DISK	TYPE 1	NO	1
APC5308765	PC STA 5+308.765	BRASS DISK	TYPE 1	NO	1
PI5461855	PI STA 5+461.855	-	TYPE 1	NO	1
B113015	NW CORNER OF NE QTR OF NE QTR SECTION 1-32-7E	MAG NAIL	TYPE 1	YES	1
APT5614871	PT STA 5+614.871	BRASS DISK	TYPE 1	NO	1
APC5719342	PC STA 5+719.342	BRASS DISK	TYPE 1	NO	1
API5871730	PI STA 5+871.730	-	TYPE 1	NO	1
A113203	SE CORNER SECTION 36-33-7E	BRASS DISK	TYPE 1	YES	1
PT6024095	PT STA 6+024.095	-	CUT CROSS	NO	2
B113009	S QTR CORNER SECTION 31-33-8E	-	TYPE 1	YES	1
A113009	N QTR CORNER SECTION 6-32-8E	-	TYPE 1	YES	1
113008	SE CORNER SECTION 31-33-8E	BRASS DISK	TYPE 1	YES	1
113007	NW CORNER SECTION 5-32-8E	BRASS DISK	TYPE 1	YES	1
PI7500	PI STA 7+500.000	BRASS DISK	TYPE 1	NO	1
A113005	S QTR CORNER SECTION 32-33-8E	BRASS DISK	TYPE 1	YES	1
A113004	N QTR CORNER SECTION 5-32-8E	BRASS DISK	TYPE 1	YES	1
A113028	SE CORNER SECTION 32-33-8E	BRASS DISK	TYPE 1	YES	1
A113029	NW CORNER SECTION 4-32-8E	BRASS DISK	TYPE 1	YES	1
A113030	S QTR CORNER SECTION 33-33-8E	BRASS DISK	TYPE 1	YES	1
A113031	N QTR CORNER SECTION 4-32-8E	BRASS DISK	TYPE 1	YES	1
A113032	NW CORNER SECTION 3-32-8E	BRASS DISK	TYPE 1	YES	1
A113033	SW CORNER SECTION 34-33-8E	BRASS DISK	TYPE 1	YES	1
113034	S QTR CORNER SECTION 34-33-8E	BRASS DISK	TYPE 1	YES	1
113035	N QTR CORNER SECTION 3-32-8E	BRASS DISK	TYPE 1	YES	1

COORDINATES ON THE LISTED MONUMENTS ARE KNOWN. PRE CONSTRUCTION TIES BY THE R.E. ARE NOT REQUIRED. UNKNOWN MONUMENTS SET BY OTHERS MAY EXIST. IF FOUND, THE R.E. MUST TIE AND REQUEST PLATS AND PLANS PERSONNEL TO GPS ANY MONUMENT(S) SUBJECT TO DAMAGE OR DESTRUCTION FROM THE RESURFACING WORK, AND INFORM THEM TO RESET THE MONUMENT(S) WHEN RESURFACING IS COMPLETE. THE R.E. IS TO INFORM THE PLATS AND PLANS SECTION TO SEARCH FOR ADDITIONAL MONUMENTS IF THE JOB LIMITS ARE EXPANDED DURING CONSTRUCTION.

UPON PAVING COMPLETION, THE R.E. WILL DIRECT PLATS AND PLANS PERSONNEL TO STAKE THE LOCATIONS FOR TYPE 1 MONUMENT CORING. PLATS AND PLANS WILL SET NEW TIES, AND ALSO PREPARE AND RECORD THE REQUIRED MONUMENT RECORDS.

- RESPONSIBILITY:
 1) RESIDENT TO RE-ESTABLISH MONUMENT (PAY ITEM REQUIRED. PERMANENT SURVEY MARKER, TYPE 1)
 2) PLATS AND PLANS TO RE-ESTABLISH MONUMENT

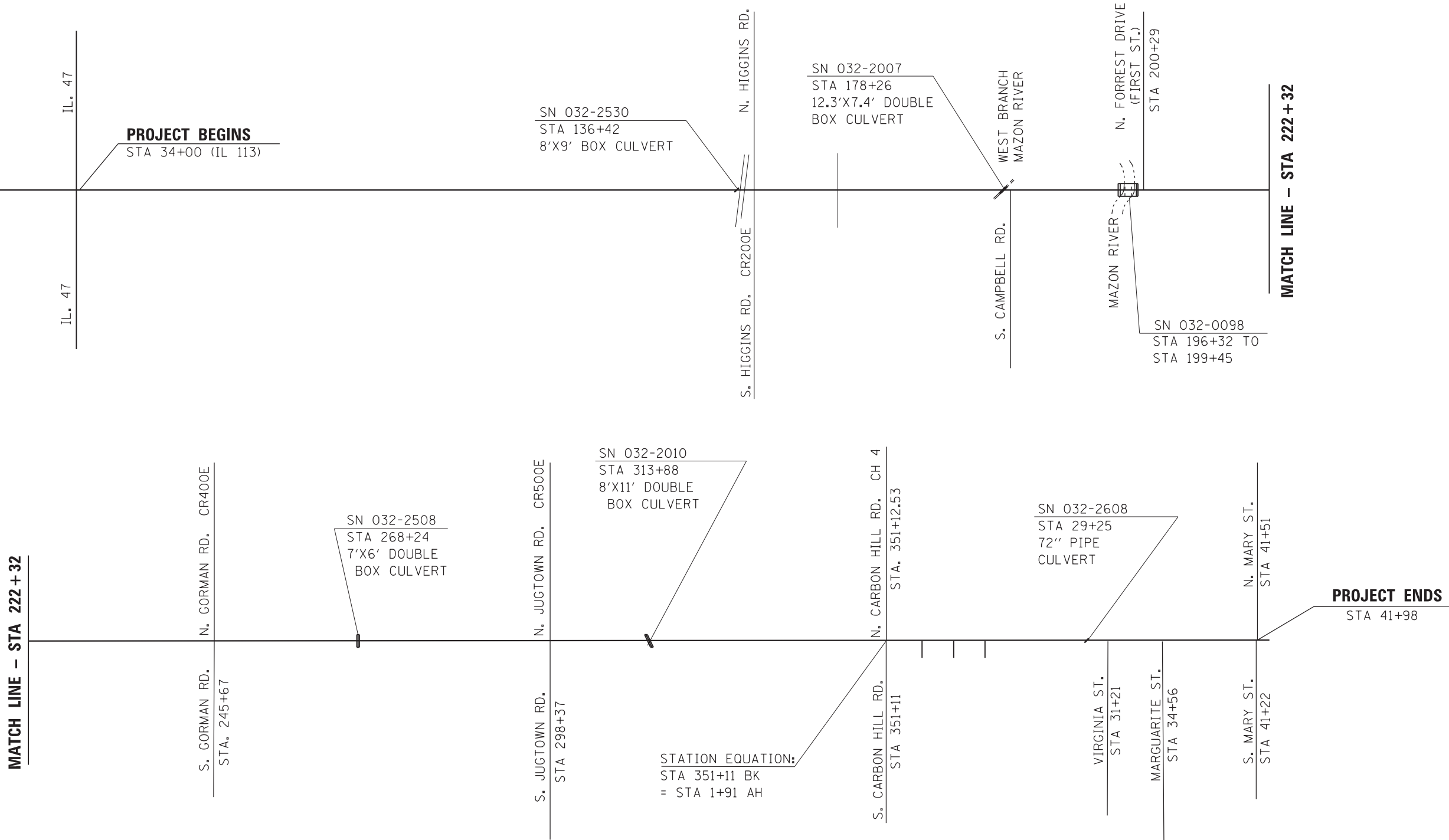
USER NAME = NOLASCOCJ	DESIGNED -	REVISED -
	DRAWN -	REVISED -
PLOT SCALE = 100.0000 ' / in.	CHECKED -	REVISED -
PLOT DATE = 12/13/2019	DATE -	REVISED -

**STATE OF ILLINOIS
 DEPARTMENT OF TRANSPORTATION**

PSM TABLE			
SCALE:	SHEET 1	OF 1	SHEETS

F.A.S. RTE.	SECTION	COUNTY	TOTAL SHEETS	SHEET NO.
301	(114)RS-2	GRUNDY	19	9
CONTRACT NO. 66A82				
ILLINOIS		FED. AID PROJECT		

MODEL: Default
 FILE: \\nlsr-pub\pubroom\data\illinois.gov\PI\DOT\Documents\DOT_Offices\Dir\ctc_3\Projects\ID366A82\CADD\DATA\ID366A82-LINE_DIAGRAM



USER NAME = NOLASCOCJ	DESIGNED -	REVISED -
	DRAWN -	REVISED -
PLOT SCALE = 100.0000' / in.	CHECKED -	REVISED -
PLOT DATE = 12/13/2019	DATE -	REVISED -

**STATE OF ILLINOIS
 DEPARTMENT OF TRANSPORTATION**

LINE DIAGRAM			
SCALE:	SHEET 1	OF 1 SHEETS	STA. TO STA.

F.A.S. RTE.	SECTION	COUNTY	TOTAL SHEETS	SHEET NO.
301	(114)RS-2	GRUNDY	19	10
CONTRACT NO. 66A82				
ILLINOIS FED. AID PROJECT				

MAINLINE SCHEDULE														
LOCATION	LENGTH	RESURF AREA	HMA SURF REM 3-3/4"	TEMP RAMP	LONG JOINT SEAL	HMA SURF CSE MIX D, N50 1-3/4"	HMA BINDER COURSE, IL-9.5 N50 2"	MAT'L TRANS DEVICE	BITUMINOUS MATERIAL (TACK COAT)	MIXTURE CRACKS JTS & FLANGEWAYS	HMA BINDER COURSE, (HAND METHOD) N50	AGG WEDGE SHLDR TY B	SHLDR RUMBLE STRIP 8"	
STATION	FOOT	SQ FT	SQ YD	SQ YD	FOOT	TON	TON	TON	POUND	TON	TON	TON	FT	
RURAL														
STA 34+00 TO STA 38+86	486	19197	2133	69	486	209	239	448	1440	0.6	1.1	9	972	
STA 38+86 TO STA 133+15	9429	282870	31430		9429	3080	3520	6600	21215	9.4	15.7	357	18858	
STA 133+15 TO STA 138+71	556	22240	2471		556	242	277	519	1668	0.7	1.2	3	1112	
STA 138+71 TO STA 175+31	3660	109800	12200		3660	1196	1366	2562	8235	3.7	6.1	138	7320	
STA 175+31 TO STA 181+58	627	25080	2787		627	273	312	585	1881	0.8	1.4	3	1254	
STA 181+58 TO STA 191+48	990	29700	3300		990	323	370	693	2228	1.0	1.7	37	1980	
STA 191+48 TO STA 196+32	484	19360	2151	42	484	211	241	452	1452	0.6	1.1		968	
STA 196+32 TO STA 199+45	313													
STA 199+45 TO STA 200+29	84	2520	280	42	84	27	31	58	189	0.1	0.1		168	
STA 200+29 TO STA 265+49	6520	195600	21733		6520	2130	2434	4564	14670	6.5	10.9	247	13040	
STA 265+49 TO STA 271+31	582	23280	2587		582	254	290	544	1746	0.8	1.3	6	1164	
STA 271+31 TO STA 310+66	3935	118050	13117		3935	1285	1469	2754	8854	3.9	6.6	149	7870	
RURAL SUB-TOTALS			94189	153	27353	9230	10549	19779	63578	28.1	47.2	949	54706	
URBAN														
STA 310+66 TO STA 316+99	633	25320	2813		633	276	315	591	1899	0.8	1.4	2	1266	
STA 316+99 TO STA 324+93	794	23820	2647		794	259	296	555	1787	0.8	1.3		1588	
STA 324+93 TO STA 341+03	1610	53130	5903		1610	578	661	1239	3985	1.8	3	61		
STA 341+03 TO STA 351+11 BK	1008	35784	3976		1008	390	445	835	2684	1.2	2			
STA 1+91 AH TO STA 19+50	1759	61876	6875		1759	674	770	1444	4641	2.1	3.4			
STA 19+50 TO STA 31+21	1171	31617	3513		1171	344	393	737	2371	1.1	1.8			
STA 31+21 TO STA 34+56	335	9045	1005		335	98	113	211	678	0.3	0.5			
STA 34+56 TO STA 41+36	680	18360	2040		680	200	228	428	1377	0.6	1			
STA 41+36 TO STA 41+98	62	1612	179	35	62	18	20	38	121	0.1	0.1			
URBAN SUB-TOTALS			28951	35	8052	2837	3241	6078	19543	8.8	14.5	63	2854	
TOTALS			123140	188	35405	12067	13790	25857	83121	36.9	61.7	1012	57560	

SIDEROAD SCHEDULE								
LOCATION	LENGTH	WIDTH	RESURF AREA	HMA SURF REMOVAL VARIABLE DEPTH	BITUMINOUS MATERIAL (TACK COAT)	INCIDENTAL HMA SURFACING	TEMP RAMP	HMA SURF RMVL BT JT
	FT	FT	SQ FT	SQ YD	POUND	TON	SQ YD	SQ YD
RURAL								
HIGGINS RD/ CR200E								
STA 139+15 LT	30	68	2040	227	102	33	66	
STA 139+15 RT	52	63	3276	364	164	54	61	140
S CAMPBELL RD								
STA 179+39 RT	75	57	4275	475	214	70	55	127
N FORREST DR								
STA 200+13 LT	30	68	2040	227	102	33	66	
GORMAN RD								
STA 245+58 RT	30	78	2340	260	117	38	76	173
STA 245+58 LT	50	62	3100	344	155	51	60	138
JUGTOWN RD								
STA 298+37 LT	30	63	1890	210	95	31	61	140
STA 298+37 RT	50	63	3150	350	158	51	61	140
RURAL TOTALS				2457	1107	361	506	858
URBAN								
CARRBON HILL RD								
STA 351+05 LT	45	99	4455	495	223	73	96	220
STA 351+05 RT	45	120	5400	600	270	88	117	267
S VIRGINIA ST								
STA 31+13 RT	30	40	1200	133	60	20	39	
S MARGUERITE ST								
STA 34+53 RT	30	47	1410	157	71	23	46	
MARY ST								
STA 41+51 LT	20	50	1000	111	50	16	49	
STA 41+22 RT	30	48	1440	160	72	24	47	
URBAN TOTALS				1656	746	244	394	487
TOTAL				4113	1853	605	900	1345

MODEL: Default
 FILE: \\nls-px1\pub\room\dat\links\gov\PIWDOT\Documents\DOT_Offices\Dir\dtc_3\project\0366A82_CADD\0366A82-2hr-schedule.dgn

USER NAME = NOLASCOCJ	DESIGNED -	REVISED -
	DRAWN -	REVISED -
PLOT SCALE = 100.0000' / in.	CHECKED -	REVISED -
PLOT DATE = 12/13/2019	DATE -	REVISED -

**STATE OF ILLINOIS
DEPARTMENT OF TRANSPORTATION**

SCHEDULE			
SCALE:	SHEET 1	OF 3	SHEETS
	STA.	TO STA.	

F.A.S. RTE.	SECTION	COUNTY	TOTAL SHEETS	SHEET NO.
301	(114)RS-2	GRUNDY	19	11
CONTRACT NO. 66A82				
ILLINOIS		FED. AID PROJECT		

DRAINAGE MAINTENANCE SCHEDULE

LOCATION	ELEMENT	COMMENTS	STORM	STORM	PRECAST RE-INF	INLETS	PIPE	BOX CUL
			SEWER TO BE CLEANED (12")	SEWER TO BE CLEANED (15")	CONC FLARED END SECT 12"	TO BE ADJUSTED	SEALS	TO BE CLEANED
STATION			FT	FT	EACH	EA	FOOT	EA
STA 313+88	CULVERT	S.N. 032-2509						1
STA 331+95	15"SS						8	
STA 342+52	INLET TY. B					1		
* STA 7+89 LT TO STA 7+89 LT	12" SS	CLEAN BARREL	11		1			
* STA 7+89 LT TO STA 7+89 LT	12" SS	CLEAN BARREL	10		1			
* STA 7+89 LT TO STA 7+99 RT	12" SS	CLEAN BARREL	28		1			
* STA 7+89 RT TO STA 7+99 RT	12" SS	CLEAN BARREL	10		1			
* STA 10+74 LT TO STA 10+74 LT	12" SS	PARTICULARLY N OUTLET	12					
* STA 10+74 LT TO STA 10+74 LT	12" SS	PARTICULARLY N OUTLET	44					
* STA 10+74 RT TO STA 10+74 RT	12" SS	CLEAN BARREL	7					
* STA 11+89 LT TO STA 11+89 LT	12" SS	CLEAN BARREL (N SIDE)	10					
* STA 11+89 RT TO STA 11+89 RT	12" SS	CLEAN BARREL (S SIDE)	6					
* STA 16+83 RT TO STA 16+83 RT	15" SS	CLEAN BARREL		14				
* STA 16+83 RT TO STA 16+83 LT	15" SS	CLEAN BARREL		32				
* STA 16+83 LT TO STA 16+83 LT	15" SS	N OUTLET TO 1ST INLET		13				
* STA 21+19 RT TO STA 21+19 LT	12" SS	CLEAN BARREL	28					
* STA 21+19 LT TO STA 21+19 LT	12" SS	CLEAN BARREL	6					
STA 22+75	12" SS	N OUTLET TO 1ST INLET	10					
TOTAL			182	59	4	1	8	1

* MATERIAL REMOVED FROM THESE ITEMS MUST REMAIN ON THE PROJECT SITE

DITCH CLEANING SCHEDULE

LOCATION	LENGTH	SIDE	FLOW DIRECTION	GRADING & SHAPING DITCHES
				FT
RURAL				
STA 113+43 TO STA 122+43	900	SOUTH	EAST	900
STA 133+63 TO STA 136+63	300	SOUTH	EAST	300
STA 133+63 TO STA 136+63	300	NORTH	EAST	300
STA 170+63 TO STA 172+63	200	NORTH	EAST	200
STA 235+13 TO STA 238+13	300	SOUTH	WEST	300
STA 276+63 TO STA 282+63	600	SOUTH	WEST	600
RURAL TOTALS				2600
URBAN				
STA 318+13 TO STA 324+13	600	NORTH	WEST	600
URBAN TOTALS				600
TOTAL				3200

ENTRANCES & MAILBOX SCHEDULE

LOCATION	TYPE	MAT'L	WIDTH	AREA	HMA SURF REMOVAL VARIABLE DEPTH	BITUMINOUS MATERIALS (TACK COAT)	INCIDENTAL HMA SURFACING	AGG WEDGE SHLD TYPE B
			FT	SQ FT	SQ YD	POUND	TON	TON
			RURAL					
STA 34+55	RT	CE	HMA	42	420	47	21	7
STA 35+25	LT	FE	AGG	26	78			0.5
STA 36+92	RT	FE	AGG	31	93			0.6
STA 60+44	LT	PE	HMA	34	340	38	17	6
STA 60+70	LT	MBTO	HMA		230	26	12	4
STA 71+65	LT	MBTO	HMA		368	41	18	6
STA 71+87	RT	CE	HMA	38	380	42	19	6
STA 72+38	LT	FE	AGG	27	81			0.5
STA 72+40	RT	CE	AGG	30	90			0.6
STA 74+64	RT	CE	AGG	83	249			1.6
STA 75+36	LT	FE	AGG	27	81			0.5
STA 77+30	LT	MBTO	HMA		230	26	12	4
STA 77+35	LT	PE	HMA	29	290	32	15	5
STA 86+19	RT	FE	AGG	33	99			0.6
STA 86+20	LT	PE	AGG	40	120			0.8
STA 89+59	LT	PE	HMA	28	280	31	14	5
STA 102+17	LT	PE	HMA	29	290	32	15	5
STA 102+17	LT	MBTO	HMA		160	18	8	3
STA 108+81	RT	FE	HMA	26	260	29	13	4
STA 112+53	LT	FE	AGG	27	81			0.5
STA 113+42	LT	FE	AGG	27	81			0.5
STA 125+64	RT	FE	AGG	21	63			0.4
STA 126+61	LT	FE	AGG	28	84			0.5
STA 141+56	RT	PE	HMA	40	400	44	20	6
STA 141+85	LT	PE	HMA	22	220	24	11	4
STA 159+58	RT	FE	AGG	30	90			0.6
STA 165+94	RT	PE	HMA	44	440	49	22	7
STA 166+31	LT	FE	AGG	27	81			0.5
STA 170+56	RT	FE	AGG	50	150			0.9
STA 174+17	LT	FE	AGG	30	90			0.6
STA 182+28	LT	FE	AGG	27	81			0.5
STA 191+67	RT	PE	HMA	39	390	43	20	6
STA 193+08	LT	PE	HMA	61	610	68	31	10
STA 200+29	RT	PE	AGG	29	87			0.5
STA 200+47	RT	MBTO	HMA		226	25	11	4
STA 204+08	RT	PE	HMA	61	610	68	31	10
STA 204+86	RT	MBTO	HMA		100	11	5	2
STA 205+38	RT	FE	AGG	35	105			0.7
STA 219+13	LT	FE	AGG	30	90			0.6
STA 220+64	LT	PE	HMA	50	500	56	25	8
STA 222+48	LT	MBTO	HMA		368	41	18	6
STA 223+26	LT	PE	AGG	27	81			0.5
STA 230+31	LT	FE	AGG	41	123			0.8
STA 230+99	LT	FE	AGG	33	99			0.6
STA 244+78	RT	PE	HMA	40	400	44	20	6
STA 244+78	LT	FE	AGG	38	114			0.7
STA 252+62	RT	FE	AGG	35	105			0.7
STA 258+60	RT	PE	HMA	40	400	44	20	6
STA 258+61	LT	FE	AGG	32	96			0.6
STA 261+44	LT	MBTO	HMA		163	18	8	3
STA 261+66	RT	PE	HMA	23	230	26	12	4
STA 261+73	LT	PE	HMA	32	320	36	16	5
STA 262+66	RT	FE	AGG	31	93			0.6
STA 271+16	LT	PE	HMA	45	450	50	23	7
STA 272+99	LT	FE	AGG	33	99			0.6
STA 272+99	RT	PE	HMA	40	400	44	20	6
STA 274+60	LT	MBTO	HMA		368	41	18	6
STA 274+63	RT	PE	HMA	43	430	48	22	7
STA 284+78	RT	FE	AGG	35	105			0.7
STA 285+20	LT	FE	AGG	43	129			0.8
RURAL TOTALS					1142	517	168	19.1
URBAN								
STA 318+72	LT	FE	AGG	33	99			0.6
STA 319+57	RT	FE	AGG	27	81			0.5
STA 324+56	RT	FE	AGG	32	96			0.6
STA 326+97	RT	FE	AGG	21	63			0.4
STA 12+45	RT	CE	HMA	54	2160	240	108	35
STA 17+33	RT	CE	HMA	59	708	79	35	12
URBAN TOTALS					319	143	47	2.1
TOTAL					1461	660	215	21.2

MODEL: Default
FILE: \\pub\pubroom\dat\illinois.gov\PIWDOT\Documents\DOT_Offices\Illinrct_3\Project\0366A82_CADD\data\0366A82-ent-schedule.dgn

USER NAME = NOLASCOCJ	DESIGNED -	REVISED -
	DRAWN -	REVISED -
PLOT SCALE = 100.0000 ' / in.	CHECKED -	REVISED -
PLOT DATE = 12/13/2019	DATE -	REVISED -

**STATE OF ILLINOIS
DEPARTMENT OF TRANSPORTATION**

SCHEDULE

SCALE: SHEET 2 OF 3 SHEETS STA. TO STA.

F.A.S. RTE.	SECTION	COUNTY	TOTAL SHEETS	SHEET NO.
301	(114)RS-2	GRUNDY	19	12
CONTRACT NO. 66A82				
ILLINOIS FED. AID PROJECT				

PAVEMENT MARKINGS															
LOCATION	LENGTH	THERMOPLASTIC							PAINT (2 APPLICATIONS)				RAISED REFL	RRPM RMVL	RUMBLE STRIP
		4" LINE		8" LINE		12" LINE		24" LINE	LETTERS & SYMBOLS		4" LINE				
		WHITE	YELLOW	WHITE	YELLOW	WHITE	WHITE	SYMBOLS	WHITE	YELLOW	WHITE	YELLOW	PVT MRK	EACH	EACH
STATION	FOOT	FOOT	FOOT	FOOT	FOOT	FOOT	FOOT	SQ FT	FOOT	FOOT	FOOT	FOOT	EACH	EACH	EACH
RURAL															
IL 47 INTERSECTION TO STA 34+00*	120	200	178	110				40	16				6	6	
STA 34+00 TO STA 38+80	480	960	960	294					31				36	36	3
STA 38+80 TO STA 196+32	15752							15		64008		7932	197	197	
STA 196+32 TO STA 199+45	313									2252		212	4	4	
STA 199+45 TO STA 298+37	9892							45		41222		5002	124	124	
RURAL TOTAL	26124		2298	404				100	47	107482		13146	367	367	3
URBAN															
STA 298+37 TO STA 345+05	4668									18672	2400		2034	58	58
STA 345+05 TO STA 351+12	607	1200	2240	211	150			40	47				46	46	
STA EQ 351+11 BK = 1+91 AH															
STA 1+91 TO STA 17+33	1542		5765	631	502			60	168				128	128	
STA 17+33 TO STA 41+98	2465					316		45			1000	576	1302	62	62
URBAN SUB-TOTAL	9282		9205	842	968			145	215	22072		3912	294	294	
TOTAL	35406		11503	1246	968			245	262	129554		17058	661	661	3

*EXTRA PAVEMENT MARKING FROM IL 47 EAST INCLUDES CENTER LINE, EDGE LINES, STOP BARS, AND ARROW.

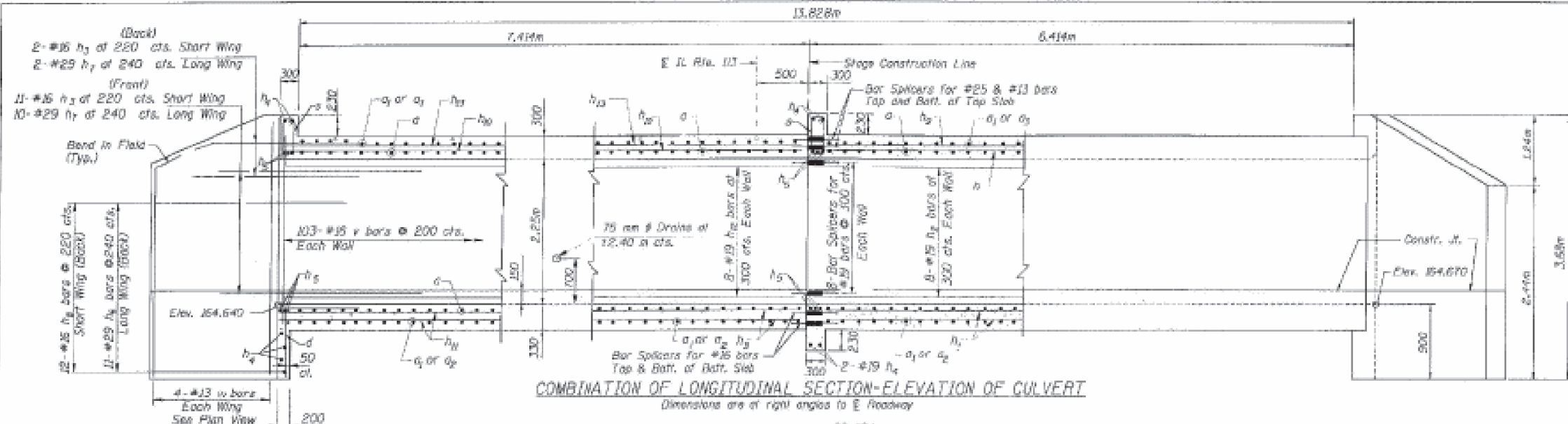
SHORT TERM PAVEMENT MARKING SCHEDULE			
LOCATION	LENGTH	SHORT TERM PVMT MARK	SHORT TERM PVMT MARK REMOVAL
STATION	FOOT	FOOT	SQ FT
RURAL			
STA 34+00 TO STA 38+80	480	86	29
STA 38+80 TO STA 196+32	15752	2855	952
STA 196+32 TO STA 199+45	313	76	25
STA 199+45 TO STA 298+37	9892	1814	605
RURAL SUB-TOTAL	26124	4831	1611
URBAN			
STA 298+37 TO STA 345+05	4668	840	280
STA 345+05 TO STA 351+12	607	109	36
STA EQ 351+11 BK = 1+91 AH			
STA 1+91 TO STA 17+33	1542	154	51
STA 17+33 TO STA 41+98	2465	247	82
URBAN SUB-TOTAL	9282	1350	449
TOTAL	35406	6181	2060

GUARDRAIL SCHEDULE										
LOCATION	SIDE	LENGTH OF NEED	GUARDRAIL REMOVAL	LONG-SPAN GUARDRAIL OVER CULVERT	LONG-SPAN GUARDRAIL OVER CULVERT	STRONG POST GUARDRAIL ATTACHED TO CULVERT	TBT TYPE 1 (SPL) TANGENT	STEEL PLATE BEAM GUARDRAIL TYPE 1, 6 FT POSTS	GUARDRAIL REFLECTORS TYPE A	LINEAR DELINEATOR PANELS, 4 INCH
				18.75 FT SPAN	25 FT SPAN	FOOT	EACH	FOOT	EACH	EACH
RURAL										
STA 136+33 TO STA 137+56	LT	123	263	44			2	87.5	3	3
STA 135+26 TO STA 136+50	RT	124	324	44			2	87.5	3	3
STA 170+81 TO STA 172+45	RT	164	350			37.5	2	100	3	3
STA 172+07 TO STA 173+71	LT	164	398			37.5	2	100	3	3
STA 267+05 TO STA 268+33	RT	128	387		50		2	87.5	3	3
STA 268+15 TO STA 269+43	LT	128	387		50		2	87.5	3	3
RURAL TOTALS		831	2109	88	100	75	12	550	18	18
URBAN										
STA 312+65 TO STA 313+99	RT	134	461		50		2	87.5	3	3
STA 313+78 TO STA 315+10	LT	132	462		50		2	87.5	3	3
URBAN TOTALS		266	923		100		4	175	6	6
TOTALS		1097	3032	88	200	75	16	725	24	24

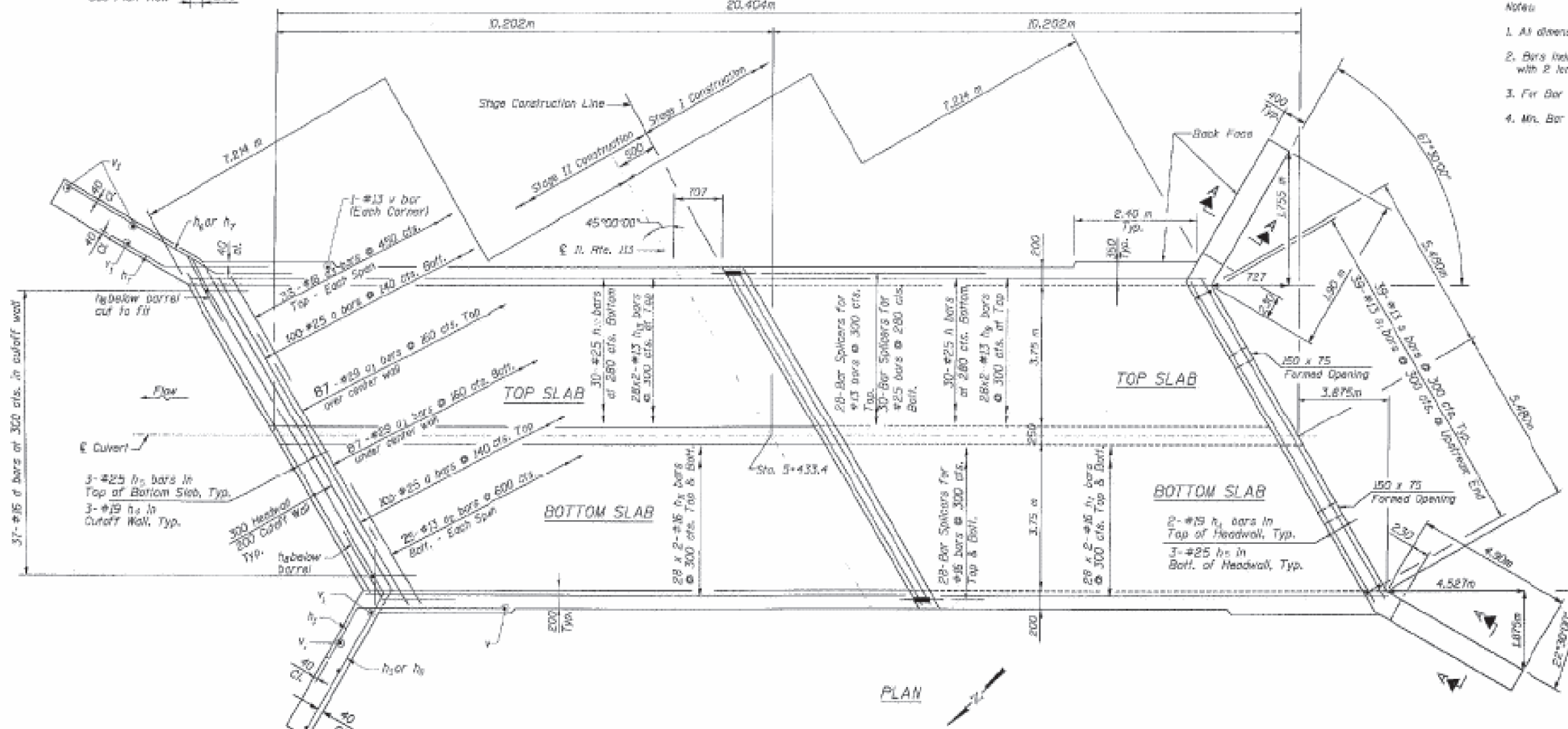
MODEL: Default
FILE: \\nlsr\p\pub\lanroom.d\at\illinois.gov\PIWDOT\Documents\DOT_Offices\Dir\dtc_3\projects\0366A82_CADDData\0366A82-shr-schedule.dgn

USER NAME = NOLASCOCJ	DESIGNED -	REVISED -	STATE OF ILLINOIS DEPARTMENT OF TRANSPORTATION	SCHEDULE				F.A.S. RTE.	SECTION	COUNTY	TOTAL SHEETS	SHEET NO.
PLOT SCALE = 100.0000' / in.	DRAWN -	REVISED -						301	(114)RS-2	GRUNDY	19	13
PLOT DATE = 12/17/2019	CHECKED -	REVISED -		SCALE: SHEET 3 OF 3 SHEETS STA. TO STA.				CONTRACT NO. 66A82				
	DATE -	REVISED -						ILLINOIS FED. AID PROJECT				

FEDERAL AID ROUTE NO.	SECTION	COUNTY	TOTAL SHEETS	SHEET NO.
301	(114) RS	GRUNDY	308	122
STA.		TO STA.		
FED. RD. DIST. NO.	ILLINOIS	FED. AID PROJECT		



- Notes:**
1. All dimensions are in millimeters (mm) except as noted.
 2. Bars indicated that 28K2-#16 etc. indicates 28 lines of bars with 2 lengths per line.
 3. For Bar Splicer details, see sheet 5 of 7.
 4. Min. Bar Laps: #13 bars = 440
#16 bars = 550



FOR INFORMATION ONLY

STATE OF ILLINOIS DEPARTMENT OF TRANSPORTATION		REINFORCEMENT PLAN & ELEVATION	
F.A.S. ROUTE 301 (I. ROUTE 113) OVER W. BRANCH MADON RIVER BRUNY COUNTY		STRUCTURE NO. 012-2007	
S&L RTE. 113 STA. 5+433.4	SECTION 114) RS	Drawn by: EG	Checked by: SJH
Scale: NONE	Date: 9-26-01	Drawn by: J42	Checked by: J42
GRAFT, ANHALT, SCHLOEMER & ASSOC., INC. 8801 N. Higgins Road, Suite 240 Chicago, Illinois 60631-2801			

MODEL: Default
FILE: \\sdc\pwworkspace\dwg\illinois\dot\documents\dot\office\dot\project\0336682\cadd\0336682-2k-rev.dwg

USER NAME = NOLASCOCJ	DESIGNED -	REVISED -
PLOT SCALE = 100.0000' / in.	DRAWN -	REVISED -
PLOT DATE = 12/13/2019	CHECKED -	REVISED -
	DATE -	REVISED -

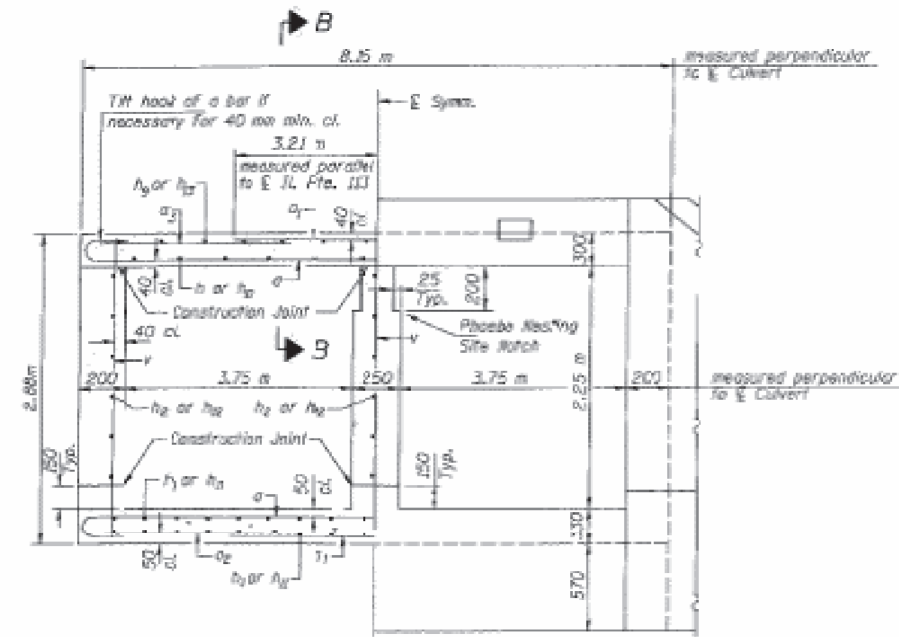
**STATE OF ILLINOIS
DEPARTMENT OF TRANSPORTATION**

CULVERT DETAILS	
SCALE:	SHEET 1 OF 2 SHEETS STA. TO STA.

F.A.S. RTE.	SECTION	COUNTY	TOTAL SHEETS	SHEET NO.
301	(114)RS-2	GRUNDY	19	14
CONTRACT NO. 66A82				
ILLINOIS FED. AID PROJECT				

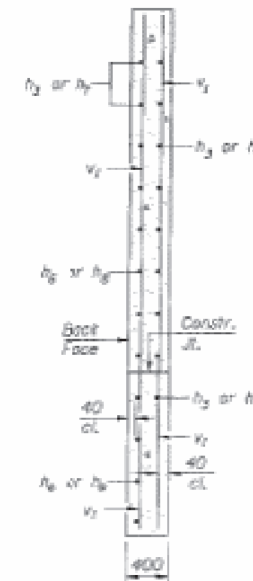
FEDERAL ROUTE NO.	SECTION	COUNTY	TOTAL SHEETS	SHEET NO.
301	BR	GRUNDY	308	125
STA.	TO STA.			
FED. RD. DIST. NO.	LINE/IS	FD. NO PROJECT		

Sheet No. 4 of 7

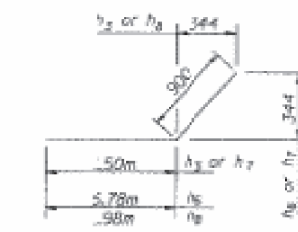
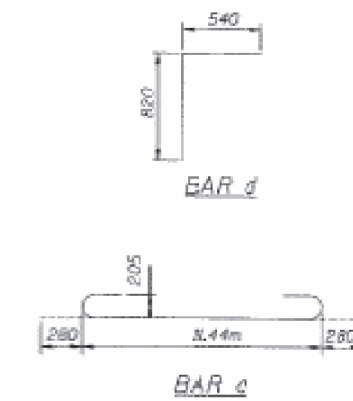


HALF SECTION THRU BARREL
(Cast-in-Place)

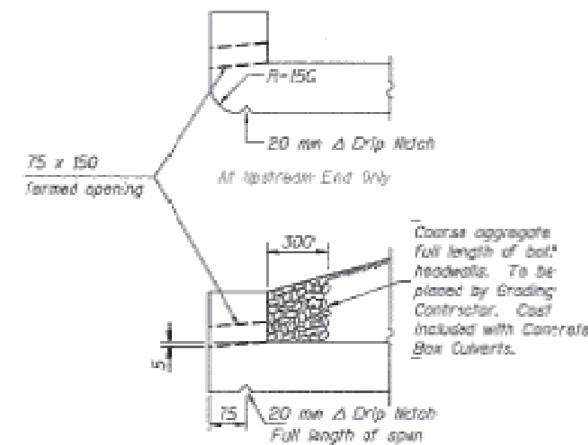
HALF END ELEVATION



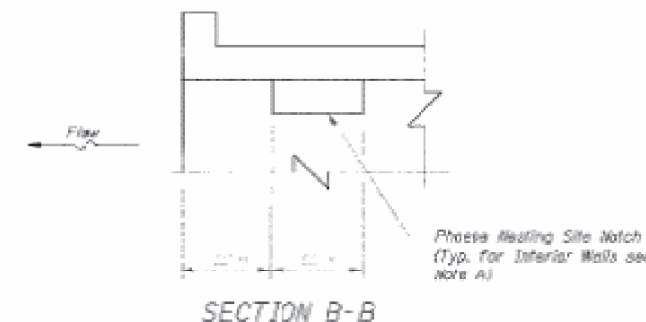
SECTION A-A



BARS h₃, h₆, h₇ & h₈



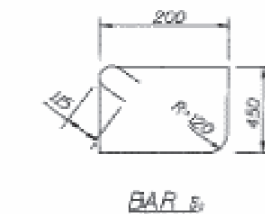
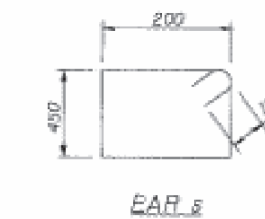
DRAIN DETAIL



SECTION B-B

Note A:
Watch formed by rough-finished board attached to and raised with formwork.
(Downstream end only)

Notes: A distance of half the length of the wingwall but not less than 2m of the barrel shall be poured monolithically with the wingwalls.



BILL OF MATERIAL

Bar	No.	Size	Length (m)	Shape
a	299	#25	2,000	□
a1	174	#29	6,420	□
a2	50	#13	2,960	□
a3	66	#16	3,070	□
d	74	#16	1,360	□
h	30	#25	9,410	□
h1	112	#16	4,980	□
h2	15	#19	9,410	□
h3	26	#16	2,400	□
h4	14	#19	11,530	□
h5	18	#21	11,530	□
h6	22	#21	5,680	□
h7	24	#21	2,400	□
h8	24	#16	2,000	□
h9	56	#13	4,930	□
h10	30	#21	11,630	□
h11	112	#16	5,680	□
h12	15	#16	11,630	□
h13	56	#13	5,640	□
v	78	#13	1,530	□
v1	39	#13	1,480	□
v2	312	#16	2,780	□
v3	15	#13	3,680	□
Concrete Box Culverts C/M				158.7
Reinforcement bars Kg				25,400

All dimensions are in millimeters (mm) except as noted.

STATE OF ILLINOIS
DEPARTMENT OF TRANSPORTATION
REINFORCEMENT DETAILS
I.A.S. ROUTE 301 (IL. ROUTE 113) OVER W. BRANCH WAZON RIVER
GRUNDY COUNTY

S&L RTE. 113 SECTION (114) BR
STA. 5+435.4 STRUCTURE NO. 032-2007

Scale: NONE Drawn by: EB
Date: 9-26-01 Checked by: SDH
GARC by: JAZ

DRAEF, ANHALT, SCHLOEMER & ASSOC., Inc.
8501 N. Higgins Road, Suite 280
Chicago, Illinois 60631-2801

REVISIONS	
None	Date

FOR INFORMATION ONLY

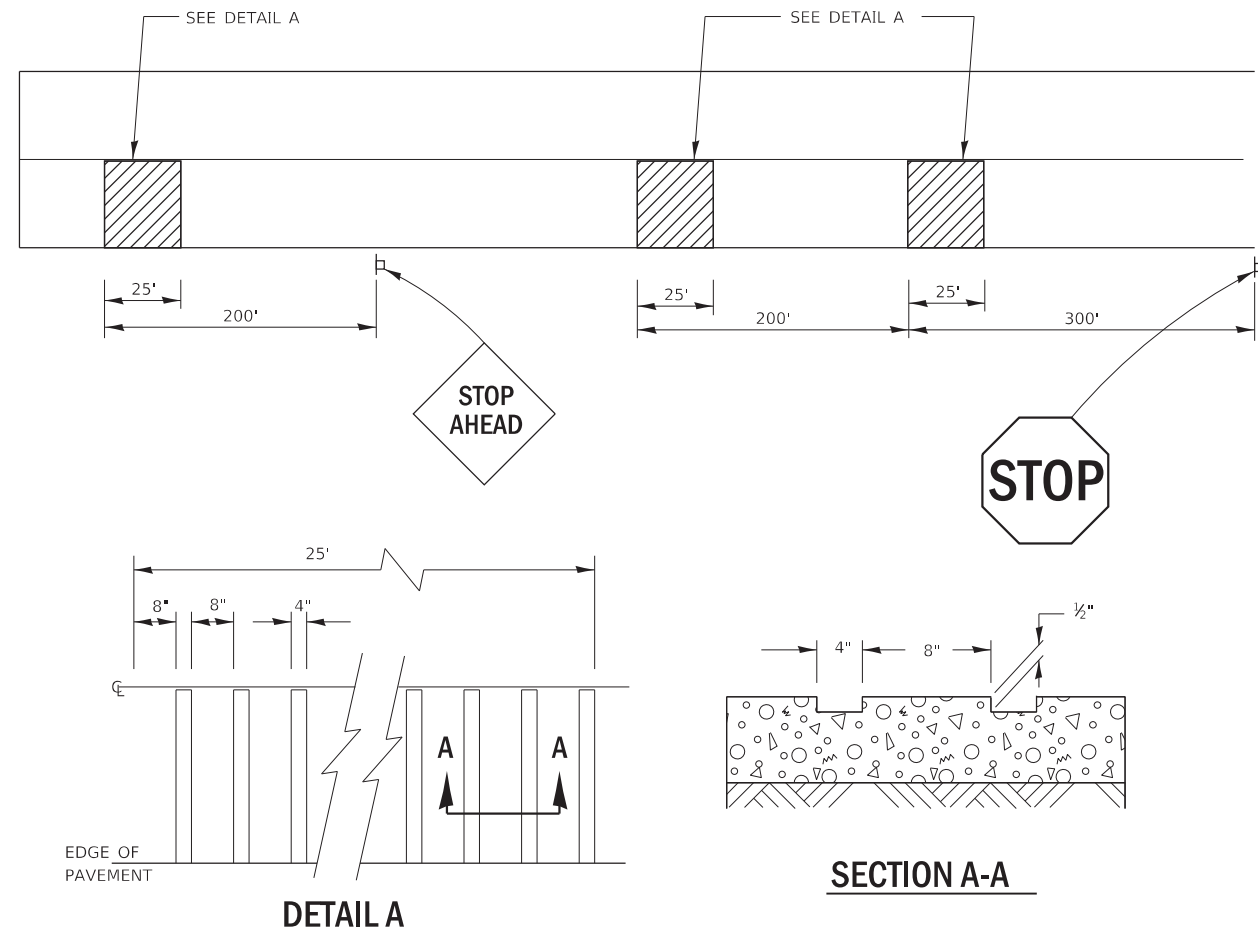
USER NAME = NOLASCOCJ	DESIGNED -	REVISED -
	DRAWN -	REVISED -
PLOT SCALE = 100,0000' / in.	CHECKED -	REVISED -
PLOT DATE = 12/13/2019	DATE -	REVISED -

STATE OF ILLINOIS
DEPARTMENT OF TRANSPORTATION

CULVERT DETAILS

SCALE: SHEET 2 OF 2 SHEETS STA. TO STA.

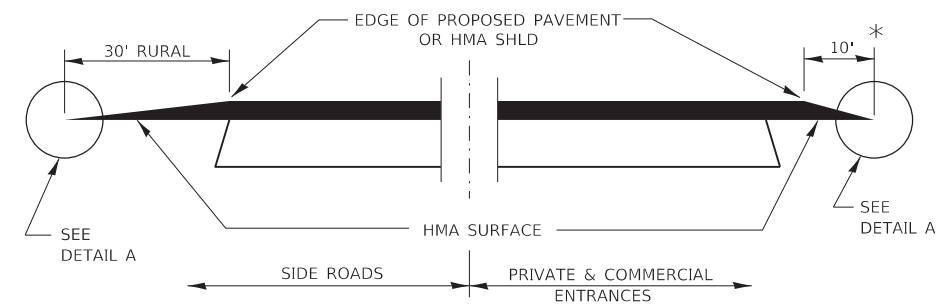
F.A.S. RTE.	SECTION	COUNTY	TOTAL SHEETS	SHEET NO.
301	(114)RS-2	GRUNDY	19	15
CONTRACT NO. 66A82				
ILLINOIS FED. AID PROJECT				



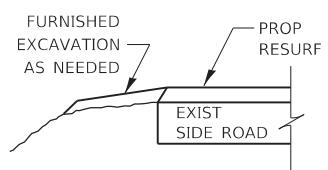
DETAIL A

SECTION A-A

TYPICAL GROOVED RUMBLE STRIP APPLICATION IN ADVANCE OF AN INTERSECTION

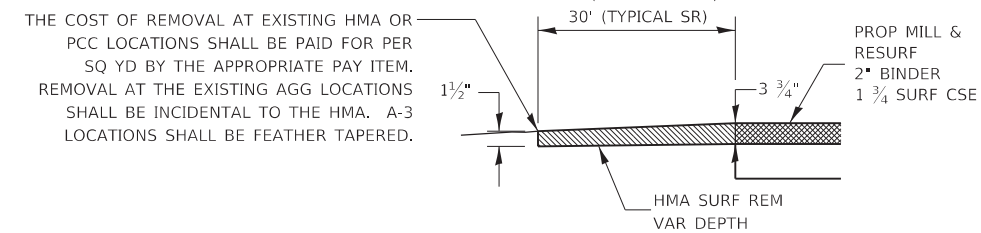


**SECTION A-A
DETAILS AT ENTRANCES & SIDE ROADS**

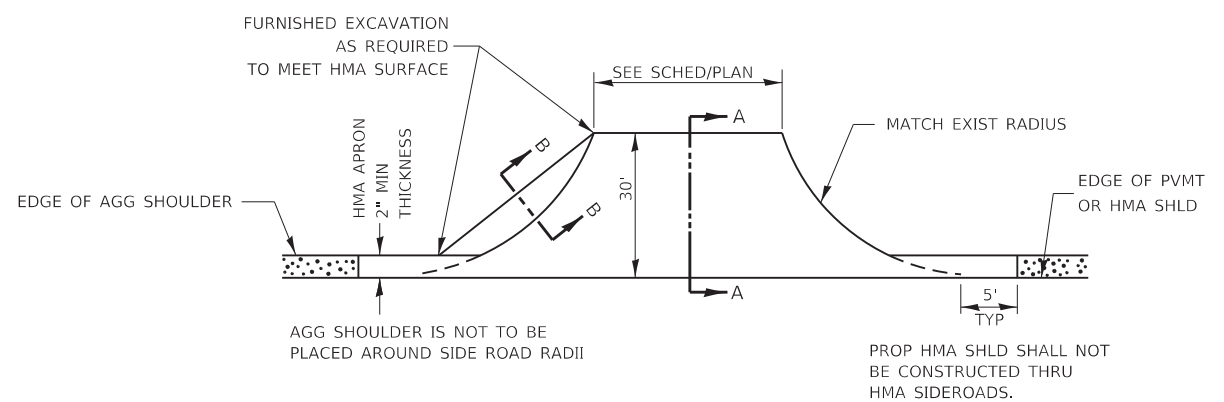


SECTION B-B

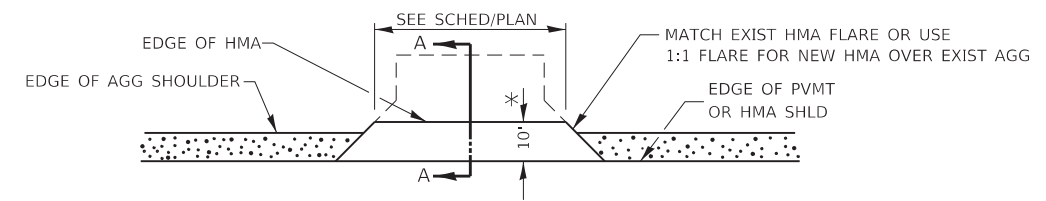
IF NEEDED, THE COST OF FURNISHED EXCAVATION AND ASSOCIATED SEEDING ITEMS WILL BE INCLUDED IN THE COST OF THE PAVING PAY ITEMS



DETAIL A



PLAN AT SIDE ROADS



PLAN AT PRIVATE & COMMERCIAL ENTRANCES

(DO NOT RESURFACE FIELD ENTRANCES)

* PROPOSED HMA RESURFACING AT PUBLIC EDUCATIONAL FACILITY ENTRANCES SHALL BE EXTENDED TO THE RIGHT-OF-WAY LIMITS.

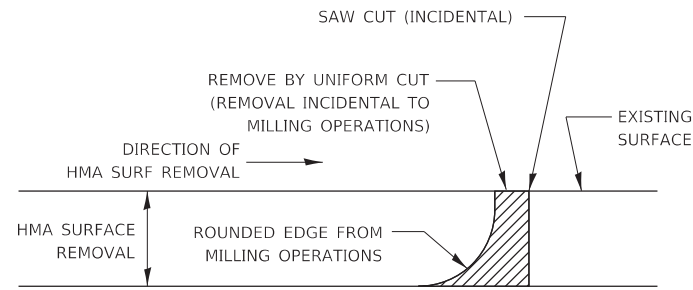
MODEL: Default
FILE: \\nlsr\p\pub\lanroom\dtd\illinois.gov\PI\DOT\Documents\DOT - Offices\Dir\trct_3\projects\ID366A82\CADDData\ID366A82-ctr-detail.dgn

USER NAME = NOLASCOCJ	DESIGNED -	REVISED -
	DRAWN -	REVISED -
PLOT SCALE = 100,0000' / in.	CHECKED -	REVISED -
PLOT DATE = 12/13/2019	DATE -	REVISED -

**STATE OF ILLINOIS
DEPARTMENT OF TRANSPORTATION**

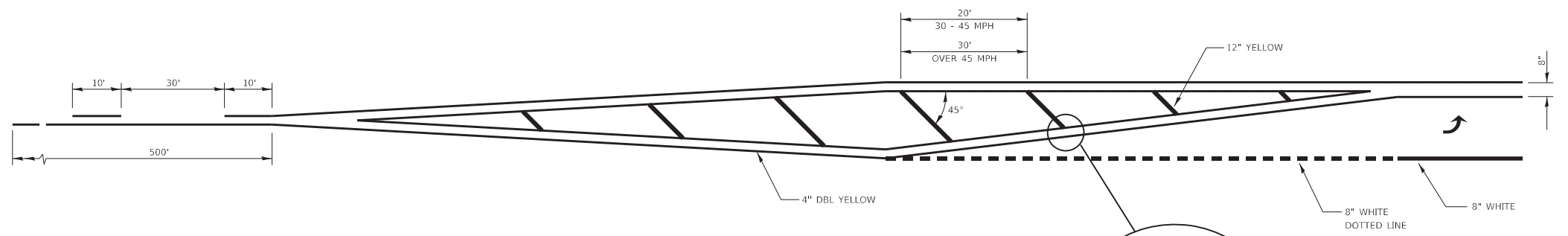
DETAILS	
SCALE:	SHEET 1 OF 4 SHEETS STA. TO STA.

F.A.S. RTE.	SECTION	COUNTY	TOTAL SHEETS	SHEET NO.
301	(114)RS-2	GRUNDY	19	16
CONTRACT NO. 66A82				
ILLINOIS FED. AID PROJECT				

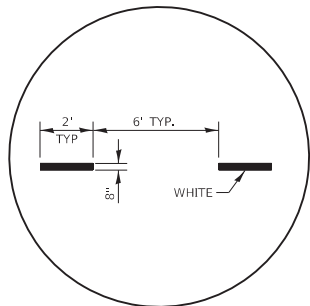
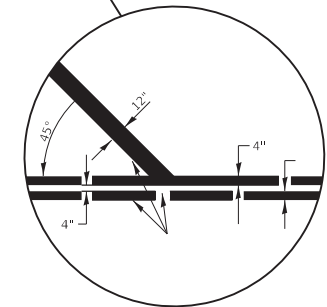


NOTE:
 WHEN MILLING OPERATIONS PRODUCE A ROUNDED EDGE, THEN A SAW CUT SHALL BE USED TO MANUFACTURE A PERPENDICULAR EDGE AS SHOWN IN THE DETAIL. THE ENGINEER SHALL BE THE SOLE JUDGE CONCERNING THE USE OF THIS DETAIL.

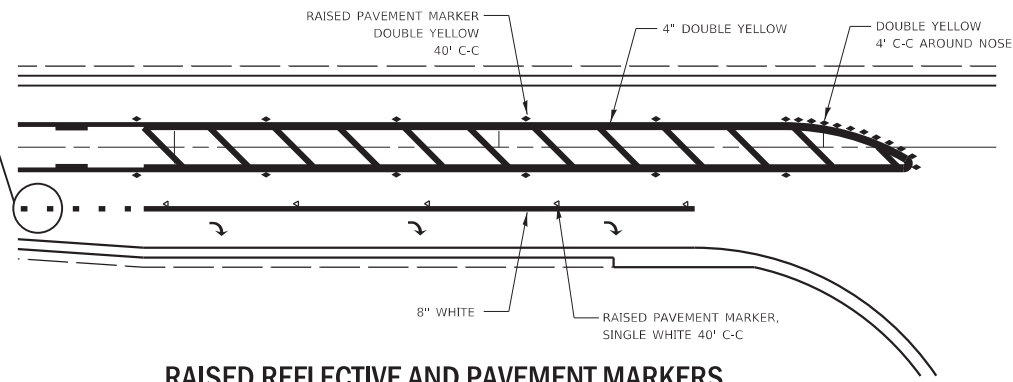
HMA DETAIL AT BUTT JOINTS



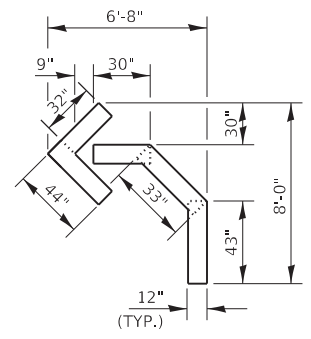
ADVANCE AND INTERSECTION LANE DIVIDER LINES



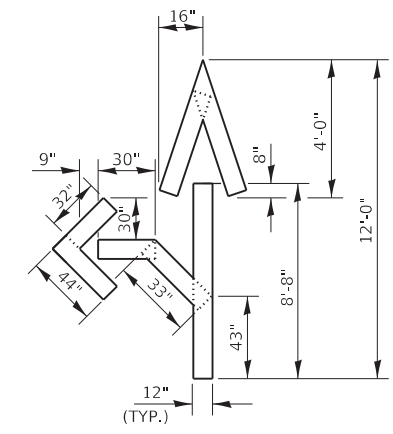
URBAN PAVEMENT MARKING



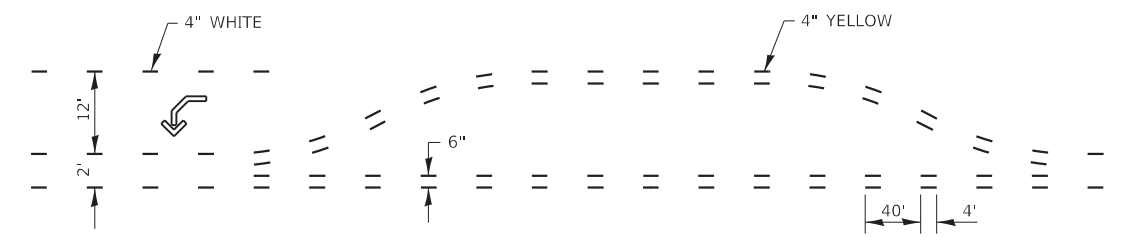
RAISED REFLECTIVE AND PAVEMENT MARKERS @ RIGHT TURN LANE



QUANTITY
 12" LINE = 16 LIN FT
 OR 4" LINE = 48 LIN FT



QUANTITY
 12" LINE = 29 LIN FT
 OR 4" LINE = 87 LIN FT



SHORT-TERM PAVEMENT MARKING FOR MEDIANS AND ARROWS

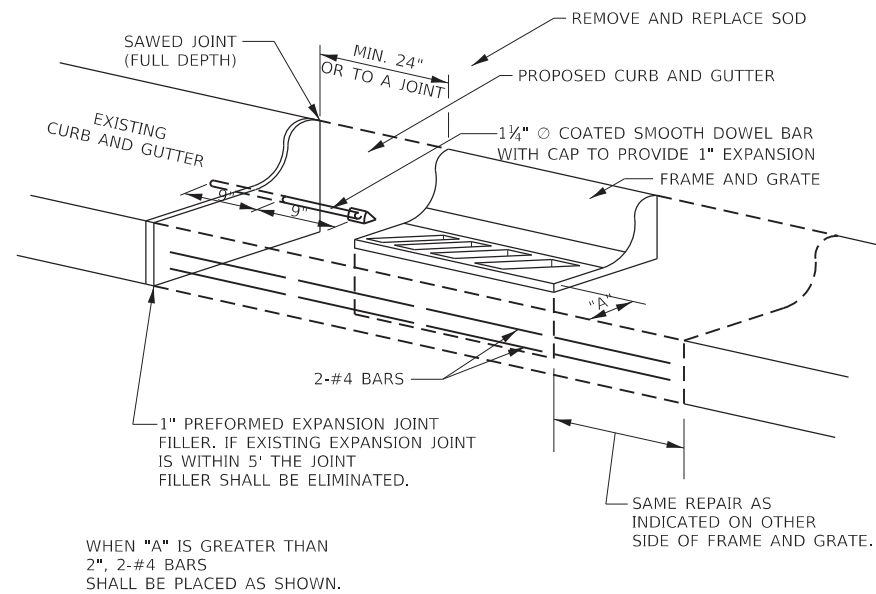
MODEL: Default
 FILE: Model: p:\pub\planroom.dwg
 PROJECT: 0366A82.ctb
 OFFICE: 0366A82.ctb
 DATE: 12/13/2019

USER NAME = NOLASCOCJ	DESIGNED -	REVISED -
PLOT SCALE = 100.0000' / in.	DRAWN -	REVISED -
PLOT DATE = 12/13/2019	CHECKED -	REVISED -
	DATE -	REVISED -

**STATE OF ILLINOIS
 DEPARTMENT OF TRANSPORTATION**

SCALE:	SHEET 3	OF 4	SHEETS	STA.	TO STA.
--------	---------	------	--------	------	---------

F.A.S. RTE.	SECTION	COUNTY	TOTAL SHEETS	SHEET NO.
301	(114)RS-2	GRUNDY	19	18
CONTRACT NO. 66A82				
ILLINOIS FED. AID PROJECT				



WHEN "A" IS GREATER THAN 2", 2-#4 BARS SHALL BE PLACED AS SHOWN.

**DETAILS FOR CURB & GUTTER REPLACEMENT
CATCH BASIN OR INLETS TO BE
ADJUSTED OR RECONSTRUCTED**

NOTE:
CONCRETE CURB AND GUTTER SHALL BE CONSTRUCTED IN ACCORDANCE WITH SECTION 606 OF THE STANDARD SPECIFICATIONS, SUPPLEMENTAL SPECIFICATIONS, STANDARD 606001 AND THIS DRAWING.

CLASS SI CONCRETE SHALL BE USED THROUGHOUT. A HOLE 1 1/2" IN DIA. AND 9" DEEP SHALL BE DRILLED IN THE EXISTING CONCRETE CURB AS SHOWN. A 1 1/4"x18" SMOOTH DOWEL BAR SHALL BE GROUTED IN THE HOLE LONGITUDINALLY.

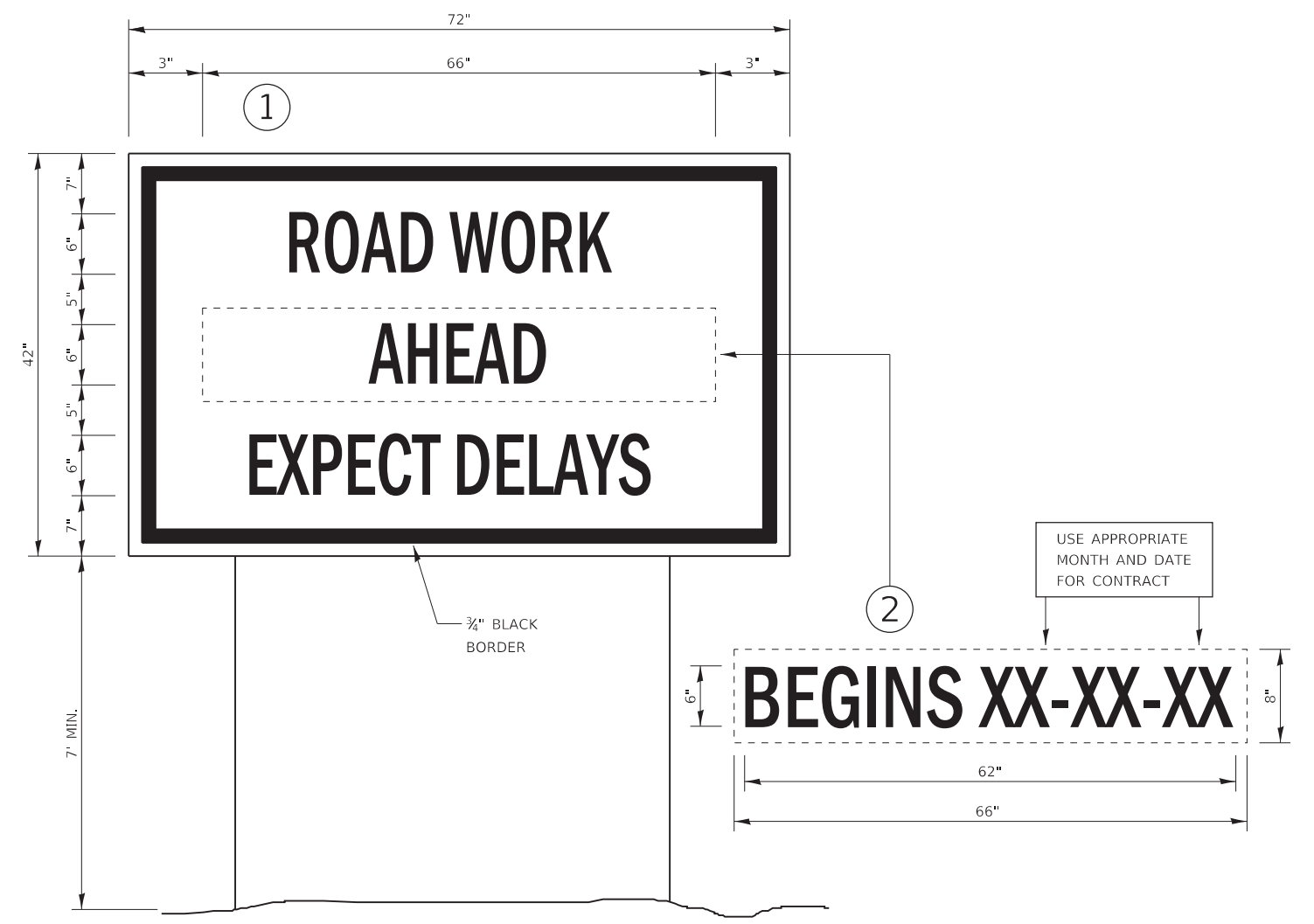
JOINTS OF A TYPE SIMILAR TO THAT IN THE UNDERLYING PAVEMENT (EXPANSION OR CONTRACTION) SHALL BE INSTALLED IN THE CONCRETE CURB IN ALIGNMENT WITH THE JOINTS IN THE PAVEMENT.

THE PROPOSED CONFIGURATION OF THE CURB AND GUTTER SHALL MATCH THE REMOVED.

THE LOCATION OF THE DOWEL BAR SHALL BE DETERMINED BY THE ENGINEER.

ALL EXISTING TIE BARS IN EDGE OF PAVEMENT SLAB THRU REPLACEMENT AREA SHALL BE CUT OFF.

THE WORK SHALL BE DONE IN ACCORDANCE WITH SECTION 602 OF THE STANDARD SPECIFICATIONS AND INCLUDES THE REMOVAL AND REPLACEMENT OF SOD, CONCRETE PAVEMENT AND/OR CURB AND GUTTER ADJACENT TO CATCH BASINS OR INLETS TO BE ADJUSTED OR RECONSTRUCTED AND SHALL BE INCLUDED IN THE PAY ITEM OF INLETS TO BE ADJUSTED.



TEMPORARY INFORMATION SIGNING

NOTES:

- USE 6" D BLACK LETTERING ON FLUORESCENT ORANGE BACKGROUND.
- ERECT SIGNS AT LOCATIONS IN ADVANCE OF THE "ROAD CONSTRUCTION AHEAD" SIGNS AS DIRECTED BY THE ENGINEER.
- ERECT SIGN ① WITH INSTALLED PANEL ② A MINIMUM OF ONE WEEK PRIOR TO THE START OF THE LANE CLOSURE.
- REMOVE PANEL ② ON THAT DATE.
- SEE SPECIAL PROVISION "TEMPORARY INFORMATION SIGNING" FOR ADDITIONAL INFORMATION.
- WILL BE PAID FOR PER SQ FT AS "TEMPORARY INFORMATION SIGNING". EACH SIGN = 21 SQ FT AND THE DATE PANEL ② WILL NOT BE MEASURED SEPARATELY FOR PAYMENT.

MODEL: Default
FILE: \\nls\p\pub\lanroom.d\at\illinois.gov\PI\DOT\Documents\DOT_Offices\Dir\dtc_3\projects\0366A82_CADD\0366A82-218-218-218.dgn

USER NAME = NOLASCOCJ	DESIGNED -	REVISED -
	DRAWN -	REVISED -
PLOT SCALE = 100.0000' / in.	CHECKED -	REVISED -
PLOT DATE = 12/13/2019	DATE -	REVISED -

**STATE OF ILLINOIS
DEPARTMENT OF TRANSPORTATION**

DETAILS			
SCALE:	SHEET 4	OF 4 SHEETS	STA. TO STA.

F.A.S. RTE.	SECTION	COUNTY	TOTAL SHEETS	SHEET NO.
301	(114)RS-2	GRUNDY	19	19
CONTRACT NO. 66A82				
ILLINOIS FED. AID PROJECT				