

CONSTR. CODE

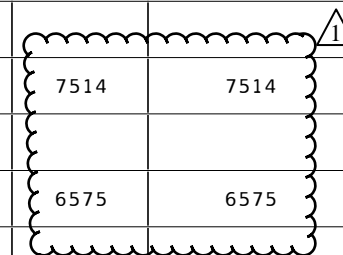
80% FED  
20% STATE

ROADWAY

0005

RURAL

CODE NO.	ITEM	UNIT	TOTAL QUANTITY	
20800150	TRENCH BACKFILL	CU YD	5	5
21400100	GRADING AND SHAPING DITCHES	FOOT	450	450
25000210	SEEDING, CLASS 2A	ACRE	0.4	0.4
25000400	NITROGEN FERTILIZER NUTRIENT	POUND	34	34
25000500	PHOSPHORUS FERTILIZER NUTRIENT	POUND	34	34
25000600	POTASSIUM FERTILIZER NUTRIENT	POUND	34	34
25100115	MULCH, METHOD 2	ACRE	0.4	0.4
40200100	AGGREGATE SURFACE COURSE, TYPE A	TON	53	53
40600400	MIXTURE FOR CRACKS, JOINTS, AND FLANGWAYS	TON	20	20
40600901	HOT-MIX ASPHALT BINDER COURSE (HAND METHOD), N70	TON	34	34
40600990	TEMPORARY RAMP	SQ YD	316	316
40602985	HOT-MIX ASPHALT BINDER COURSE, IL-9.5, N70	TON	7514	7514
40604052	HOT-MIX ASPHALT SURFACE COURSE, IL-9.5, MIX "C", N70	TON	6575	6575
40800029	BITUMINOUS MATERIALS (TACK COAT)	POUND	6098	6098



MODEL: Default  
 FILE NAME: P:\uplanroom.dat  
 ILLINOIS.GOV.PWIDOT\Documents\DOT\_Offices\District\_3\Projects\ID366B76\CADDData\CAD\sheet\ID366B76-11-500.dgn

USER NAME = corcoranim	DESIGNED -	REVISED -
	DRAWN -	REVISED -
PLOT SCALE = 100.0000' / in.	CHECKED -	REVISED -
PLOT DATE = 12/17/2019	DATE -	REVISED -

**STATE OF ILLINOIS  
DEPARTMENT OF TRANSPORTATION**

**SUMMARY OF QUANTITIES**

SCALE: SHEET OF SHEETS STA. TO STA.

F.A.P. RTE.	SECTION	COUNTY	TOTAL SHEETS	SHEET NO.
326	128 RS-2	FORD	12	3
CONTRACT NO. 66B76				
ILLINOIS FED. AID PROJECT				

CODE NO.	ITEM	UNIT	TOTAL QUANTITY	CONSTR. CODE	
				80% FED 20% STATE	
				ROADWAY	RURAL
40800050	INCIDENTAL HOT-MIX ASPHALT SURFACING	TON	145	145	
44000164	HOT-MIX ASPHALT SURFACE REMOVAL, 3 3/4"	SQ YD	67093	67093	
44201851	CLASS D PATCHES, TYPE II, 17 INCH	SQ YD	15	15	
48101200	AGGREGATE SHOULDERS, TYPE B	TON	924	924	
50105220	PIPE CULVERT REMOVAL	FOOT	58	58	
542A5479	PIPE CULVERTS, CLASS A, TYPE 1 EQUIVALENT ROUND-SIZE 24"	FOOT	48	48	
54214509	PRECAST REINFORCED CONCRETE FLARED END SECTIONS, EQUIVALENT ROUND-SIZE 24"	EACH	2	2	
54260315	TRAVERSABLE PIPE GRATE FOR CONCRETE END SECTION	FOOT	22	22	
54390160	INSERTION CULVERT LINER 21"	FOOT	62	62	
59300100	CONTROLLED LOW-STRENGTH MATERIAL	CU YD	12	12	
66700205	SURVEY MARKER, TYPE 1	EACH	8	8	
67000400	ENGINEER'S FIELD OFFICE, TYPE A	CAL MO	4	4	
67100100	MOBILIZATION	L SUM	1	1	
70100455	TRAFFIC CONTROL AND PROTECTION, STANDARD 701206	L SUM	1	1	
70100460	TRAFFIC CONTROL AND PROTECTION, STANDARD 701306	L SUM	1	1	



MODEL: Default  
 FILE: \\blm1c2.pw.us\pub\harcourt\dot\Documents\DOT\_Offices\blm1c2\Projects\66B76\CADDData\CAD\Sheet\66B76-11-500.dgn

USER NAME = corcoranlm	DESIGNED -	REVISED -
	DRAWN -	REVISED -
PLOT SCALE = 100.0000 ' / in.	CHECKED -	REVISED -
PLOT DATE = 12/13/2019	DATE -	REVISED -

**STATE OF ILLINOIS  
 DEPARTMENT OF TRANSPORTATION**

SUMMARY OF QUANTITIES			
SCALE:	SHEET	OF	SHEETS

F.A.P. RTE.	SECTION	COUNTY	TOTAL SHEETS	SHEET NO.
326	128 R5-2	FORD	12	4
CONTRACT NO. 66B76				
ILLINOIS FED. AID PROJECT				

DRAINAGE SCHEDULE											
LOCATION	STRUCTURE NUMBER			DRAINAGE STRUCTURES TO BE CLEANED EACH	BOX CULVERT TO BE CLEANED EACH	REMOVE GRATING EACH	REMOVE EXISTING FLARED END SECTION EACH	GRADING AND SHAPING DITCHES FOOT	DEBRIS REM L SUM	CONTROLLED LOW-STRENGTH MATERIAL CU YD	INSERTION CULVERT LINER 21" FOOT
10+71, 31' RT		MANHOLE		CLEAN MH	1						
15+60, 46' RT				CLEAN OUTLET PIPE, REM GRATE		1					
15+73	027-2009	DOUBLE 12'X9' BOX		NO WORK							
15+88, 40' RT				CLEAN OUTLET PIPE, REM GRATE		1					
16+60, 26' LT		MANHOLE		CLEAN MH	1						
33+55	027-2525	10'X4' PRECAST BOX		NO WORK							
90+32		18" PIPE - 58'		FILL AND ABANDON			2			4	
92+00 TO 96+50, RT				GRADING & SHAPING DITCH				150			
106+80		24" PIPE		24" PIPE TO BE LINED							62
118+80 TO 121+00 RT				GRADING & SHAPING DITCH				220			
118+85		18" PIPE		FILL AND ABANDON			2			4	
186+33	SN 027-0089	2-SPAN PPC I-BEAM BRIDGE		EROSION REPAIR & DEBRIS REM					1	4	
202+14		3'X2' BOX CULVERT		CLEAN CULVERT		1					
<b>TOTAL</b>					<b>2</b>	<b>1</b>	<b>2</b>	<b>370</b>	<b>1</b>	<b>12</b>	<b>62</b>

PIPE CULVERT REPLACEMENT											
LOCATION		FLOWLINE ELEVATION		PIPE CULV REM FOOT	PIPE CULV CL A, TY 1 EQUIV RS 24" FOOT	PRC FLARED ES EQUIV ROUND SIZE 24" EACH	TRENCH BACK FILL CU YD	TRAVERSABLE PIPE GRATE FOR CONC END SECTION FOOT	CLASS D PATCH TY II, 17"		GRADING AND SHAPING DITCHES FOOT
		U.S. LEFT	D.S. RIGHT						LEFT SQ YD	RIGHT SQ YD	
106+03	24" PIPE - REPLACE	MEET EXISTING	MEET EXISTING	58	48	2	5	22.3	7.5	7.5	80
<b>TOTAL</b>				<b>58</b>	<b>48</b>	<b>2</b>	<b>5</b>	<b>22.3</b>	<b>15</b>		<b>80</b>

SEEDING SCHEDULE							
LOCATION	AREA SQ YD	SEEDING CLASS 2A ACRE	MULCH METHOD 2 ACRE	NIT FERT NUT LB	PHOS FERT NUT LB	POT FERT NUT LB	
82+40 TO 83+30 RT	120	0.025	0.025	2.3	2.3	2.3	
191+50 TO 192+40	150	0.031	0.031	2.8	2.8	2.8	
92+00 TO 95+50 RT	778	0.161	0.161	14.5	14.5	14.5	
106+03 LT & RT	178	0.037	0.037	3.3	3.3	3.3	
118+80 TO 121+00 RT	489	0.101	0.101	9.1	9.1	9.1	
<b>TOTAL</b>	<b>1840</b>	<b>0.381</b>	<b>0.381</b>	<b>34.3</b>	<b>34.3</b>	<b>34.3</b>	

PAVING SCHEDULE												
LOCATION	LENGTH FOOT	AVG PVMT WIDTH FOOT	HMA PVMT AREA SQ YD	HMA BINDER		HMA SURF REM 3-3/4" SQ YD	LONG JOINT SEAL FOOT	AGG SHLDR TY B TON	TEMP RAMP SQ YD	BIT MAT (TACK COAT) POUND	MIX FOR CRACKS, JOINTS & FLGWYS TON	HMA BINDER (HM) TON
				TON	CSE TON							
5+65 TO 27+26.56	2161.56	26	6245	699.4	612	6245	2162		36	468.4	1.9	3.1
27+26.56 TO 185+37.09	15810.53	30	52702	5902.6	5164.8	52702	15811	800	42	3952.7	15.8	26.4
185+37.09 TO 187+29.15 - OMISSION SN 027-0089	192.06	30										
187+29.15 TO 211+73	2443.85	30	8146	912.4	798.3	8146	2444	124	84	611	2.4	4.1
<b>TOTAL</b>	<b>20608</b>			<b>7514.4</b>	<b>6575.1</b>	<b>67093</b>	<b>20417</b>	<b>924</b>	<b>162</b>	<b>5032.1</b>	<b>20.1</b>	<b>33.6</b>

MODEL: Default  
 FILE: MainE\_PavingPlanroom.dwg  
 PROJECT: I:\Projects\DOT\Documents\DOT\_Offices\District\_3\Projects\0366876\CADDData\CADDsheets\0366876-sh-500.dgn

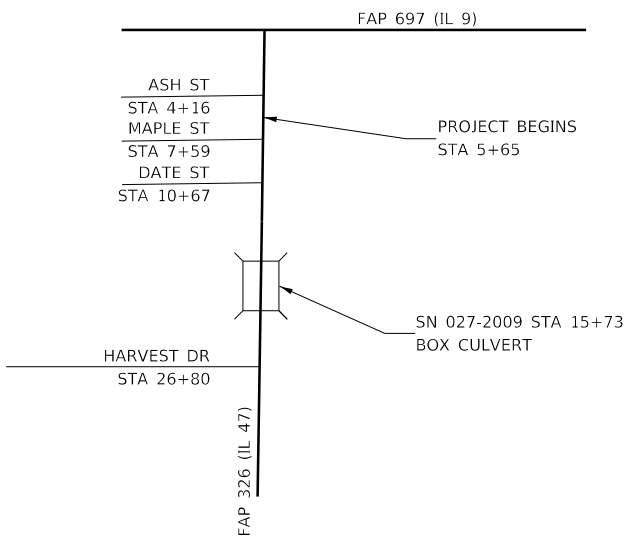
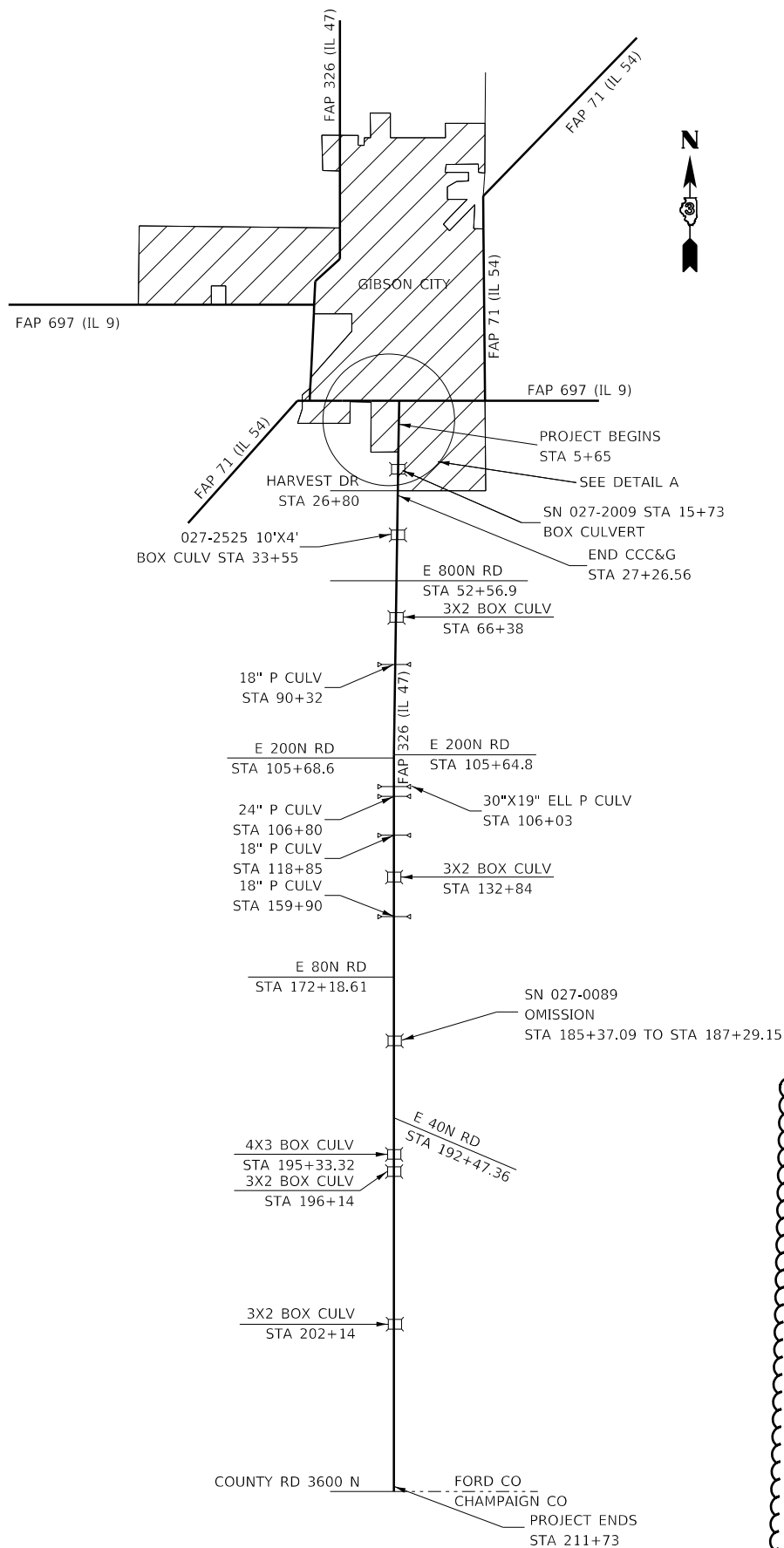
USER NAME = corcoranim	DESIGNED -	REVISED -
	DRAWN -	REVISED -
PLOT SCALE = 100.0000' / in.	CHECKED -	REVISED -
PLOT DATE = 12/13/2019	DATE -	REVISED -

**STATE OF ILLINOIS**  
**DEPARTMENT OF TRANSPORTATION**

**SCHEDULE**

SCALE: SHEET OF SHEETS STA. TO STA.

F.A.P. RTE.	SECTION	COUNTY	TOTAL SHEETS	SHEET NO.
326	128 R5-2	FORD	12	8
CONTRACT NO. 66B76				
ILLINOIS FED. AID PROJECT				



DETAIL A



MONUMENT NUMBER	DESCRIPTION	EXISTING MONUMENT TYPE	PROPOSED MONUMENT TYPE	MONUMENT RECORD TO BE RECORDED	RESPONSIBILITY
47009	N QTR CORNER SECTION 14, T23N, R7E, 3RD PM	BRASS PLUG	TYPE 1	YES	1
47008	CENTER OF SECTION 14, T23N, R7E, 3RD PM	BRASS PLUG	TYPE 1	YES	1
47007	N QTR CORNER SECTIN 23, T23N, R7E, 3RD PM	BRASS PLUG	TYPE 1	YES	1
47006	CENTER OF SECTION 23, T23N, R7E, 3RD PM	BRASS PLUG	TYPE 1	YES	1
47005	N QTR CORNER SECTION 26, T23N, R7E, 3RDPM	BRASS PLUG	TYPE 1	YES	1
47004	CENTER OF SECTION 26, T23N, R7E, 3RD PM	BRASS PLUG	TYPE 1	YES	1
47003	S QTR CORNER SECTION 26, T23N, R7E, 3RD PM	BRASS PLUG	TYPE 1	YES	1
47002	CENTER OF SECTION 35, T23N, R7E, 3RD PM	BRASS PLUG	TYPE 1	YES	1

UNKNOWN MONUMENTS SET BY OTHERS MAY EXIST. IF FOUND, R.E. WILL DIRECT PLATS AND PLANS TO OBTAIN COORDINATES ON ANY FOUND MONUMENT(S) SUBJECT TO DESTRUCTION FROM THE RESURFACING WORK.  
 R.E. WILL DIRECT PLATS AND PLANS TO SEARCH FOR ADDITIONAL MONUMENTS IF THE JOB LIMITS ARE EXPANDED DURING CONSTRUCTION.  
 UPON PAVING COMPLETION, R.E. WILL DIRECT PLATS AND PLANS TO STAKE THE LOCATIONS FOR TYPE 1 MONUMENT CORING.  
 NOTE: FOR BIDDING PURPOSES, NO CONTRACTED LAND SURVEYING SERVICES WILL BE REQUIRED FOR SETTING THE LISTED PERMANENT SURVEY MARKERS.  
 PLATS AND PLANS WILL PREPARE AND RECORD THE REQUIRED MONUMENT RECORDS.

- RESPONSIBILITY:  
 1) RESIDENT TO RE-ESTABLISH MONUMENT (PAY ITEM REQUIRED. PERMANENT SURVEY MARKER, TYPE 1)  
 2) PLATS AND PLANS TO RE-ESTABLISH MONUMENT

MODEL: Default  
 FILE: h:\work\pwworkspace\dwg\illinois\proj\widdot\Documents\DOT - Offices\Draft\3\Project\326676\CADDData\CAD\ sheets\326676-plc-spl-ctd.dgn

USER NAME = corcoranlm	DESIGNED -	REVISED -
	DRAWN -	REVISED -
PLOT SCALE = 100.0000' / in.	CHECKED -	REVISED -
PLOT DATE = 2/24/2020	DATE -	REVISED -

**STATE OF ILLINOIS  
 DEPARTMENT OF TRANSPORTATION**

**LAYOUT MAP**

SCALE: SHEET OF SHEETS STA. TO STA.

F.A.P. RTE.	SECTION	COUNTY	TOTAL SHEETS	SHEET NO.
326	128 R5-2	FORD	12	10
CONTRACT NO. 66B76			ILLINOIS FED. AID PROJECT	