

048

03-06-2020 LETTING ITEM 048

STATE OF ILLINOIS
DEPARTMENT OF TRANSPORTATION

F.A.P. RTE.	SECTION	COUNTY	TOTAL SHEETS	SHEET NO.
619	103RS-5	LAS PUT	8	1
		ILLINOIS	CONTRACT NO. 66K29	

INDEX OF SHEETS

1	COVER SHEET
2	GENERAL NOTES
3 4	SUMMARY OF QUANTITIES
5	TYPICAL SECTION
6	SCHEDULE OF QUANTITIES
7	LINE DIAGRAM
8	DETAILS

LIST OF ILLINOIS DOT HIGHWAY STANDARDS

000001-07	STANDARD SYMBOLS, ABBREVIATIONS AND PATTERNS
001006	DECIMAL OF AN INCH AND OF A FOOT
701001-02	OFF-ROAD OPERATIONS 2L, 2W, MORE THAN 15' (4.5 m) AWAY
701006-05	OFF-ROAD OPERATIONS 2L, 2W, 15' (4.5 m) TO 24' (600 mm) FROM PAVEMENT EDGE
701301-04	LANE CLOSURE, 2L, 2W, SHORT TIME OPERATIONS
701306-04	LANE CLOSURE, 2L, 2W, SLOW MOVING OPERATIONS DAY ONLY, FOR SPEEDS \geq 45 MPH
701311-03	LANE CLOSURE, 2L, 2W, MOVING OPERATIONS - DAY ONLY
701501-06	URBAN LANE CLOSURE, 2L, 2W, UNDIVIDED
701901-08	TRAFFIC CONTROL DEVICES
780001-05	TYPICAL PAVEMENT MARKINGS
781001-04	TYPICAL APPLICATIONS RAISED REFLECTIVE PAVEMENT MARKERS

**PROPOSED
HIGHWAY PLANS**

FAP ROUTE 619 (IL 71)
SECTION 103RS-5
PROJECT STP-WKGA (237)
MICROSURFACING
LASALLE & PUTNAM COUNTY

C-93-117-19



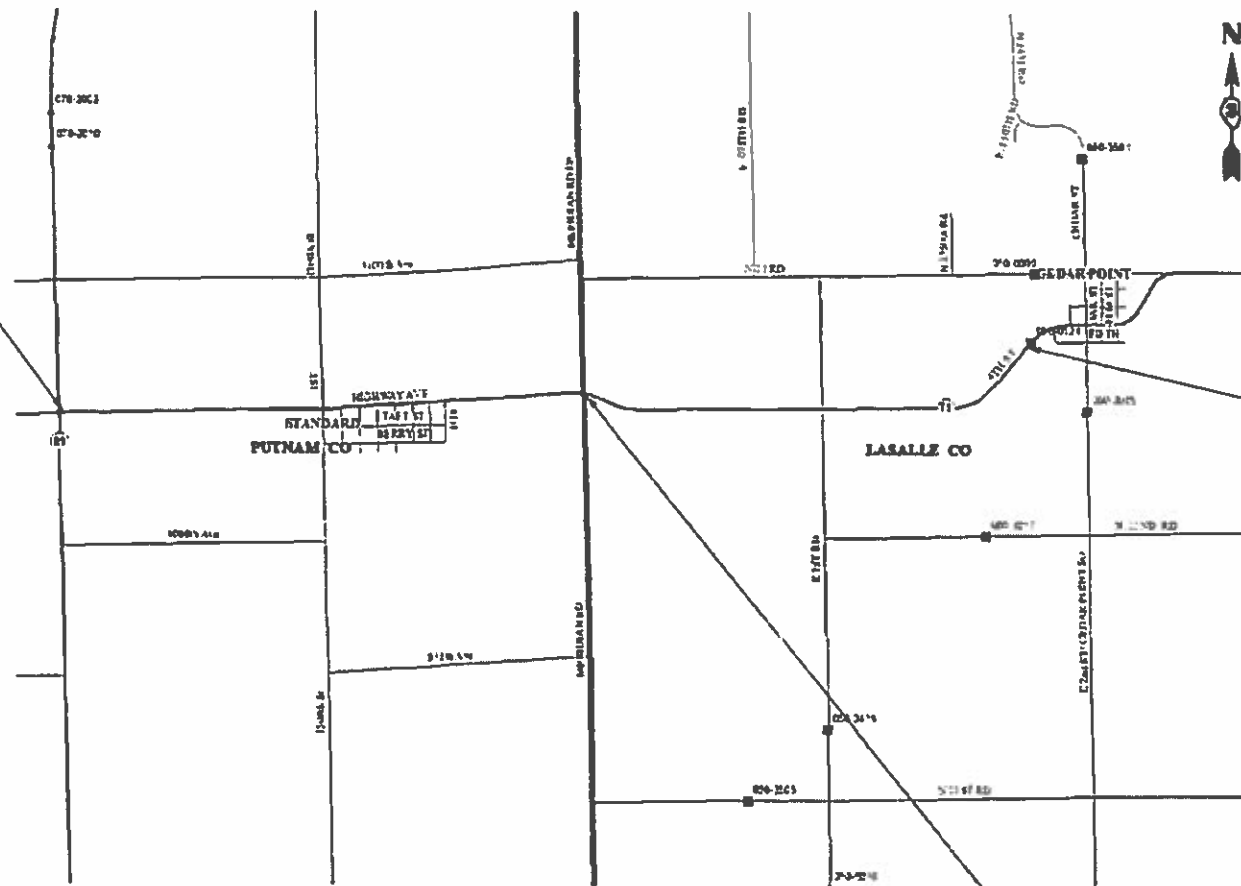
FUNCTIONAL CLASSIFICATION:
MINOR ARTERIAL
2017 ADT = 2550
PV=76.3% SU%=5.7% MU%=18



FULL SIZE PLANS HAVE BEEN PREPARED USING STANDARD ENGINEERING SCALES. REDUCED SIZED PLANS WILL NOT CONFORM TO STANDARD SCALES. IN MAKING MEASUREMENTS ON REDUCED PLANS, THE ABOVE SCALES MAY BE USED.

J.U.L.I.E.
JOINT UTILITY LOCATION INFORMATION FOR EXCAVATION
1-800-892-0123
OR 811

PROJECT ENGINEER: JOSEPH KANNEL, PE
UNIT CHIEF: ARLENE OTERO-FEBUS
DISTRICT 3 NO. (815) 434-6131
CONTRACT NO. 66K29



GROSS LENGTH = 20,218 FT. = 3.83 MILE
NET LENGTH = 20,218 FT. = 3.83 MILE

COUNTY BOUNDARY
107+52

STATE OF ILLINOIS
DEPARTMENT OF TRANSPORTATION

SUBMITTED Dec 12, 2019

[Signature]
REGIONAL ENGINEER

[Signature]
ENGINEER OF DESIGN AND ENVIRONMENT

[Signature]
DIRECTOR OF HIGHWAYS PROJECT IMPLEMENTATION

PRINTED BY THE AUTHORITY
OF THE STATE OF ILLINOIS

GENERAL NOTES

THE ENGINEER WILL BE THE SOLE JUDGE CONCERNING CURING TIME FOR THE MICRO-SURFACING AND WHEN THE ROADWAY WILL BE OPENED TO TRAFFIC

ANY REFERENCE TO A STANDARD IN THESE PLANS SHALL BE INTERPRETED TO MEAN THE EDITION AS INDICATED BY THE SUBNUMBER SHOWN IN THE LIST OF STANDARDS OR THE COPY INCLUDED IN THESE PLANS.

THE FOLLOWING RATES OF APPLICATION HAVE BEEN USED IN CALCULATING PLAN QUANTITIES:

SHORT TERM PAVEMENT MARKING	10	FT /100 FT OF APPLICATION
MIX FOR CRACKS, JTS & FLGWYS	0.0003	TONS / SQ YD

THE CONTRACTOR SHALL CONTACT JULIE AT LEAST 48 HOURS PRIOR TO EXCAVATION TO DETERMINE WHICH UTILITIES ARE IN THE AREA.

IT IS THE RESPONSIBILITY OF THE RESIDENT ENGINEER TO LOCATE ANY ADDITIONAL BUMPS AND CRACKS TO BE REMOVED OR SEALED PRIOR TO MICRO-SURFACING OPERATIONS.

ALL ENTRANCES & SIDE ROADS SHALL BE OMITTED

COMMITMENTS

STATE OF ILLINOIS
DEPARTMENT OF TRANSPORTATION
DISTRICT THREE
AS BUILT INFORMATION

SUPERVISING CONSTRUCTION FIELD ENGINEER

RESIDENT ENGINEER / TECHNICIAN

START & END DATES
OF CONSTRUCTION:

INSPECTORS:

STATE OF ILLINOIS
DEPARTMENT OF TRANSPORTATION
DISTRICT THREE

PREPARED BY: *Dave Brooks*
DISTRICT STUDIES & PLANS ENGINEER

DATE: 12/13/19

EXAMINED BY: *ACV*
DISTRICT CONSTRUCTION ENGINEER

Michael...
DISTRICT MATERIALS ENGINEER

Tom...
DISTRICT OPERATIONS ENGINEER

**STATE OF ILLINOIS
DEPARTMENT OF TRANSPORTATION**

GENERAL NOTES

USER NAME = NOLASCOCJ	DESIGNED -	REVISED -
PLOT SCALE = 100,0000' / in.	DRAWN -	REVISED -
PLOT DATE = 12/12/2019	CHECKED -	REVISED -
	DATE -	REVISED -

SCALE:	SHEET 1	OF 1	SHEETS	STA.	TO STA.	F.A.P. RTE.	SECTION	COUNTY	TOTAL SHEETS	SHEET NO.
						619	103RS-5	LAS. PUT	8	2
										CONTRACT NO. 66K29
										ILLINOIS FED. AID PROJECT

CODE NO.	ITEM	UNIT	TOTAL QUANTITY	CONSTRUCTION CODE	
				STP-RUR LASALLE CTY	STP-RUR PUTNAM CTY
				ROADWAY	ROADWAY
				0005	0005
				RURAL	RURAL
40400001	FIBER-MODIFIED ASPHALT CRACK SEALING	FOOT	21152	10200	10952
40400020	BUMP REMOVAL	EACH	6	3	3
40400118	MICRO-SURFACING, SINGLE PASS	SQ YD	62220	30147	32073
40600290	BITUMINOUS MATERIALS (TACK COAT)	POUND	14000	6783	7217
40600400	MIXTURE FOR CRACKS, JOINTS, AND FLANGEWAYS	TON	18.7	9	9.7
* 66700205	PERMANENT SURVEY MARKERS, TYPE I	EACH	6	2	4
67100100	MOBILIZATION	L SUM	1	0.4	0.6
70100460	TRAFFIC CONTROL AND PROTECTION, STANDARD 701306	L SUM	1	0.4	0.6
70102620	TRAFFIC CONTROL AND PROTECTION, STANDARD 701501	L SUM	1	0.4	0.6
70300100	SHORT TERM PAVEMENT MARKING	FOOT	3400	1744	1656
70300150	SHORT TERM PAVEMENT MARKING REMOVAL	SQ FT	1135	581	554
70300220	TEMPORARY PAVEMENT MARKING - LINE 4"	FOOT	45842	26770	19072
70300240	TEMPORARY PAVEMENT MARKING - LINE 6"	FOOT	4394	1773	2621
* 78001110	PAINT PAVEMENT MARKING - LINE 4"	FOOT	91684	53540	38144

* SPECIAL ITEM

MODEL: Default
 FILE: \\nas01c01.pw.us\pub\baron.com\data\illinois.gov\PW\DOT\Documents\DOT_Offices\Illin\ct 3\Projects\66K29\CADD\66K29-1h-500.dgn

USER NAME = NOLASCOCJ	DESIGNED -	REVISED -
	DRAWN -	REVISED -
PLOT SCALE = 100.0000 ' / in.	CHECKED -	REVISED -
PLOT DATE = 12/13/2019	DATE -	REVISED -

**STATE OF ILLINOIS
DEPARTMENT OF TRANSPORTATION**

SUMMARY OF QUANTITIES

SCALE: SHEET 1 OF 2 SHEETS STA. TO STA.

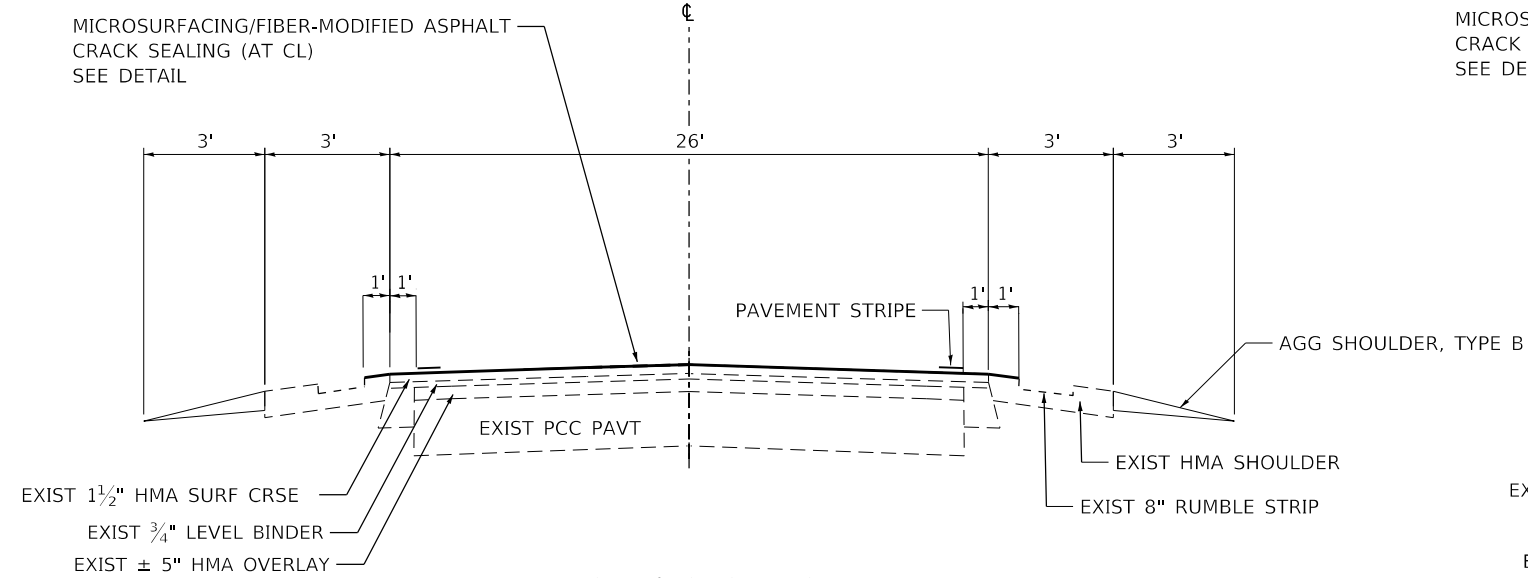
F.A.P. RTE.	SECTION	COUNTY	TOTAL SHEETS	SHEET NO.
619	103RS-5	LAS, PUT	8	3
CONTRACT NO. 66K29			ILLINOIS FED. AID PROJECT	

CODE NO.	ITEM	UNIT	TOTAL QUANTITY	CONSTRUCTION CODE	
				STP -RUR LASALLE CTY	STP -RUR PUTNAM CTY
				ROADWAY	ROADWAY
				0005	0005
				RURAL	RURAL
* 78001130	PAINT PAVEMENT MARKING - LINE 6"	FOOT	8788	3546	5242
* 78100100	RAISED REFLECTIVE PAVEMENT MARKER	EACH	254	121	133
78300200	RAISED REFLECTIVE PAVEMENT MARKER REMOVAL	EACH	254	121	133
∅ Z0076600	TRAINEES	HOUR	1000	1000	
X0327980	PAVEMENT MARKING REMOVAL - WATER BLASTING	SQ FT	34960	19620	15340
∅ Z0076604	TRAINEES - TRAINING PROGRAM GRADUATE	HOUR	1000	1000	
Z0030850	TEMPORARY INFORMATION SIGNING	SQ FT	42	21	21

* SPECIAL ITEM
∅ 0042

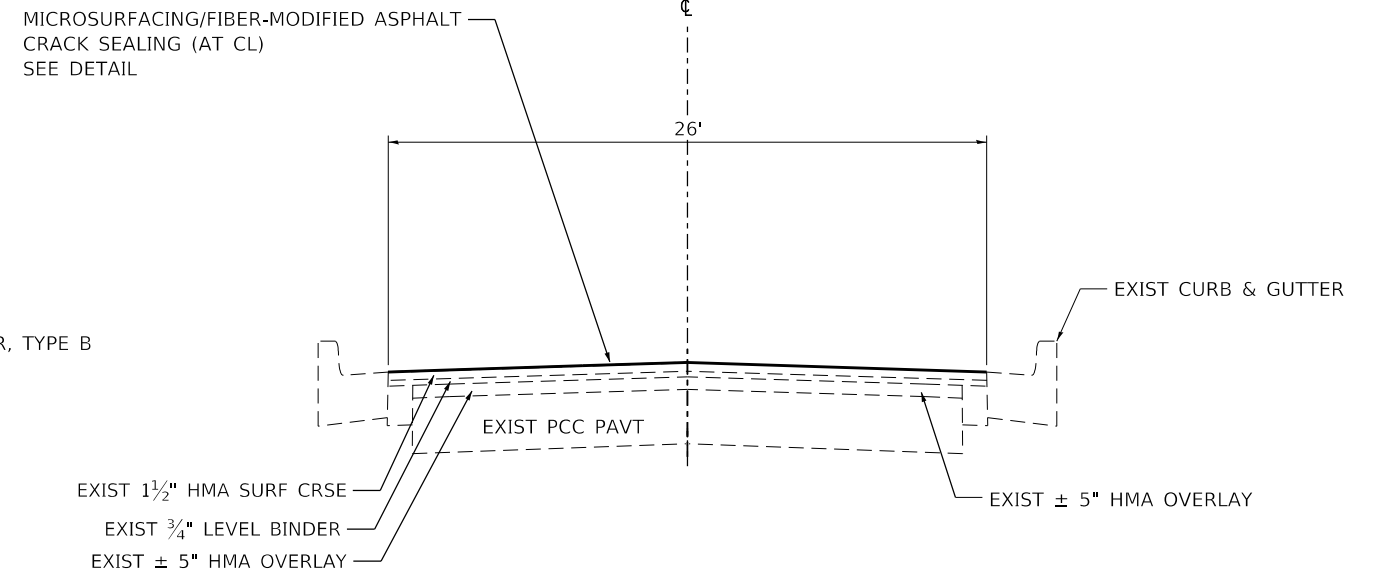
MODEL: Default
FILE: \\nas1c2.pw.uspbarn.com\data\illinois.gov\PW\DOT\Documents\DOT_Offices\District_3\Projects\10366K29\CADD\data\10366K29-1r-500.dgn

USER NAME = NOLASCOCJ	DESIGNED -	REVISED -	STATE OF ILLINOIS DEPARTMENT OF TRANSPORTATION	SUMMARY OF QUANTITIES				F.A.P. RTE.	SECTION	COUNTY	TOTAL SHEETS	SHEET NO.
PLOT SCALE = 100.0000 ' / in.	DRAWN -	REVISED -						619	103RS-5	LAS, PUT	8	4
PLOT DATE = 12/13/2019	CHECKED -	REVISED -		SCALE: SHEET 2 OF 2 SHEETS STA. TO STA.				ILLINOIS FED. AID PROJECT				
	DATE -	REVISED -		CONTRACT NO. 66K29								



TYPICAL SECTION NO 1

STA 2+24 TO STA 50+24
STA 80+88 TO STA 204+42



TYPICAL SECTION NO 2

STA 50+24 TO STA 80+88

PERMANENT SURVEY MARKERS

GPS NUMBER	DESCRIPTION	EXISTING MONUMENT TYPE	PROPOSED MONUMENT TYPE	MONUMENT RECORD TO BE RECORDED	RESPONSIBILITY
71021	CENTER OF SECTION 11, T32N, R1W, 3RD PM	MAG NAIL	TYPE 1	NO	1
71022	E QTR CORNER SECTIO N11, T32N, R1W, 3RD PM	MAG NAIL	TYPE 1	NO	1
71023	CENTER OF SECTION 12, T32N, R1W, 3RD PM	MAG NAIL	TYPE 1	NO	1
71024	E QTR CORNER SECTION 12, T32N, R1W, 3RD PM	MAG NAIL	TYPE 1	NO	1
71027	E QTR CORNER SECTION 7, T32N, R1E, 3RD PM	MAG NAIL	TYPE 1	NO	1
71028	PI STA 159+79.50	MAG NAIL	TYPE 1	NO	1

COORDINATES ARE KNOWN FOR THE LISTED MONUMENTS. PRE CONSTRUCTION TIES ARE NOT REQUIRED. UNKNOWN MONUMENTS SET BY OTHERS MAY EXIST. IF FOUND, R.E. WILL DIRECT PLATS AND PLANS TO OBTAIN COORDINATES ON ANY MONUMENT(S) SUBJECT TO BEING COVERED BY THE MICROSURFACING WORK. R.E. WILL DIRECT PLATS AND PLANS TO SEARCH FOR ADDITIONAL MONUMENTS IF THE JOB LIMITS ARE EXPANDED DURING CONSTRUCTION. UPON MICROSURFACING COMPLETION, R.E. WILL DIRECT PLATS AND PLANS TO STAKE THE LOCATIONS FOR TYPE 1 MONUMENT CORING. NOTE: PERMANENT SURVEY MARKERS ARE TO BE SET DUE TO THE OMMISION OF THE PSM TABLE FROM PREVIOUS RESURFACE CONTRACT 66B79. NOTE: SUITABLE MONUMENT RECORDS WERE PREVIOUSLY FILED UNDER CONTRACT 66B79. NOTE: FOR BIDDING PURPOSES, NO CONTRACTED LAND SURVEYING SERVICES WIL BE REQUIRED FOR SETTING THE LISTED PERMANENT SURVEY MARKERS.

- RESPONSIBILITY:
- 1) RESIDENT TO RE-ESTABLISH MONUMENT (PAY ITEM REQUIRED. PERMANENT SURVEY MARKER, TYPE 1)
 - 2) PLATS AND PLANS TO RE-ESTABLISH MONUMENT

MODEL: Default
FILE: \\nasdaq-prod\pub\harcourt\dot\Documents\DOT - Offices\Illinois\3\Projects\1036629\CADD\1036629-01-01.dgn

USER NAME = NOLASCOCJ	DESIGNED -	REVISED -
	DRAWN -	REVISED -
PLOT SCALE = 100.0000' / in.	CHECKED -	REVISED -
PLOT DATE = 12/13/2019	DATE -	REVISED -

**STATE OF ILLINOIS
DEPARTMENT OF TRANSPORTATION**

TYPICAL SECTION	
SCALE:	SHEET 1 OF 1 SHEETS STA. TO STA.

F.A.P. RTE.	SECTION	COUNTY	TOTAL SHEETS	SHEET NO.
619	103RS-5	LAS. PUT	8	5
CONTRACT NO. 66K29				
ILLINOIS FED. AID PROJECT				

MICROSURFACING MAINLINE							
LOCATION	WIDTH	LENGTH	MICRO-SURFACING SINGLE PASS	MIX FOR CRACK, JTS FLANGEWYS	FIBR MOD ASPHALT CRACK SEALING	BIT MATLS (TACK COAT)	BUMP REMOVAL
	FOOT	FOOT	SQ YD	TON	FOOT	POUND	EACH
PUTNAM COUNTY							
STA. 2+24 TO STA. 50+24	28	4,800	14,933	4.5	4,952	3360	1
STA. 50+24 TO STA. 80+88	26	3,064	8,852	2.7	3,210	1992	1
STA. 80+88 TO STA. 107+52	28	2,664	8,288	2.5	2,790	1865	1
PUTNAM TOTAL		10,528	32,073	9.7	10,952	7,217	3
LASALLE COUNTY							
STA. 107+52 TO STA. 204+42	28	9,690	30,147	9.0	10,200	6783	3
LASALLE TOTAL		9690	30147	9.0	10200	6783	3
TOTAL		20,218	62,220	18.7	21,152	14,000	6

PAVEMENT MARKINGS							
LOCATION	LENGTH	PAINT (2 APPLICATIONS)			RAISED	RAISED REFL	PVMT MARK
		4" LINE		6" LINE	REFL	PVT MRK	REM
		WHITE	YELLOW	YELLOW	PVT MRK	REMOVAL	WATER BLAST
STATION	FOOT	FOOT	FOOT	FOOT	EACH	EACH	SQ FT
PUTNAM COUNTY							
STA 2+24 TO STA 12+04	980	3920		490	12	12	776
STA 12+04 TO STA 18+64	660	2640	1320	330	8	8	743
STA 18+64 TO STA 21+74	310	1240		156	4	4	246
STA 21+74 TO STA 28+54	680	2720	1360	340	9	9	765
STA 28+54 TO STA 35+74	720	2880		360	9	9	570
STA 35+74 TO STA 42+34	660	2640	1320	330	8	8	743
STA 42+34 TO STA 43+94	160	640		80	2	2	127
STA 43+94 TO STA 50+74	680	2720	1360	340	9	9	765
STA 50+74 TO STA 51+94	120		240	60	2	2	55
STA 51+94 TO STA 80+74	2880			1440	36	36	360
STA 80+74 TO STA 95+84	1510	6040		756	19	19	1196
STA 95+84 TO STA 107+04	1120	4480	2240	560	14	14	1260
STA 107+04 TO STA 107+52	48	192	192		1	1	64
PUTNAM COUNTY TOTALS	10528		38144	5242	133	133	7670
LASALLE COUNTY							
STA 107+52 TO STA 115+52	800	3200	3200		10	10	1067
STA 115+52 TO STA 127+52	1200	4800	2400	600	15	15	1350
STA 127+52 TO STA 176+52	4900	19600		2450	61	61	3879
STA 176+52 TO STA 186+42	990	3960	1980	496	12	12	1114
STA 186+42 TO STA 204+42	1800	7200	7200		23	23	2400
LASALLE COUNTY TOTALS	9690		53540	3546	121	121	9810
TOTALS	20218		91684	8788	254	254	17480

TEMPORARY PAVEMENT MARKING SCHEDULE							
LOCATION	LENGTH	PAINT			PVMT MARK	SHORT	SHORT TERM
		4" LINE		6" LINE	REM	TERM PVMT	MARK
		WHITE	YELLOW	YELLOW	WATER BLAST	MARK	REMOVAL
STATION	FOOT	FOOT	FOOT	FOOT	SQ FT	FOOT	SQ FT
PUTNAM COUNTY							
STA 2+24 TO STA 12+04	980	1960		245	776	176	59
STA 12+04 TO STA 18+64	660	1320	660	165	743	119	40
STA 18+64 TO STA 21+74	310	620		78	246	56	19
STA 21+74 TO STA 28+54	680	1360	680	170	765	122	41
STA 28+54 TO STA 35+74	720	1440		180	570	130	43
STA 35+74 TO STA 42+34	660	1320	660	165	743	119	40
STA 42+34 TO STA 43+94	160	320		40	127	29	10
STA 43+94 TO STA 50+74	680	1360	680	170	765	122	41
STA 50+74 TO STA 51+94	120		120	30	55	12	4
STA 51+94 TO STA 80+74	2880			720	360	288	96
STA 80+74 TO STA 95+84	1510	3020		378	1196	272	91
STA 95+84 TO STA 107+04	1120	2240	1120	280	1260	202	67
STA 107+04 TO STA 107+52	48	96	96		64	9	3
PUTNAM COUNTY TOTALS	10528		19072	2621	7670	1656	554
LASALLE COUNTY							
STA 107+52 TO STA 115+52	800	1600	1600		1067	144	48
STA 115+52 TO STA 127+52	1200	2400	1200	300	1350	216	72
STA 127+52 TO STA 176+52	4900	9800		1225	3879	882	294
STA 176+52 TO STA 186+42	990	1980	990	248	1114	178	59
STA 186+42 TO STA 204+42	1800	3600	3600		2400	324	108
LASALLE COUNTY TOTALS	9690		26770	1773	9810	1744	581
TOTALS	20218		45842	4394	17480	3400	1135

MODEL: Default
 FILE: \\nls-px1\pub\rooms\dat\illinois\pwr\WIDOT\Documents\DOT_Offices\Illintct_3\projects\66K29\CADD\data\66K29-ht-schedule.dgn

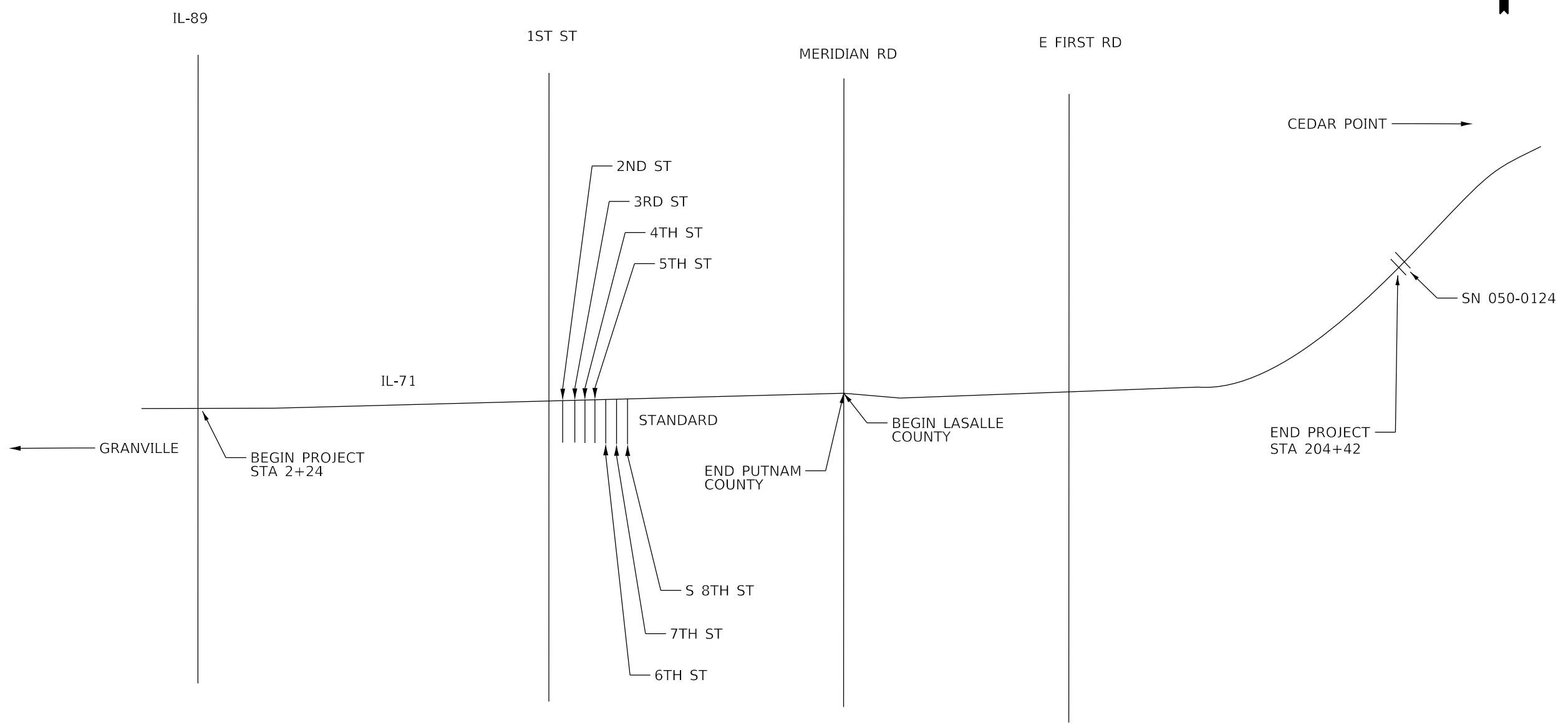
USER NAME = NOLASCOCJ	DESIGNED -	REVISED -
	DRAWN -	REVISED -
PLOT SCALE = 100.0000 ' / in.	CHECKED -	REVISED -
PLOT DATE = 12/13/2019	DATE -	REVISED -

**STATE OF ILLINOIS
DEPARTMENT OF TRANSPORTATION**

MAINLINE & SIDEROAD SCHEDULES

SCALE: SHEET 1 OF 2 SHEETS STA. TO STA.

F.A.P. RTE.	SECTION	COUNTY	TOTAL SHEETS	SHEET NO.
619	103RS-5	LAS, PUT	8	6
CONTRACT NO. 66K29				
ILLINOIS FED. AID PROJECT				



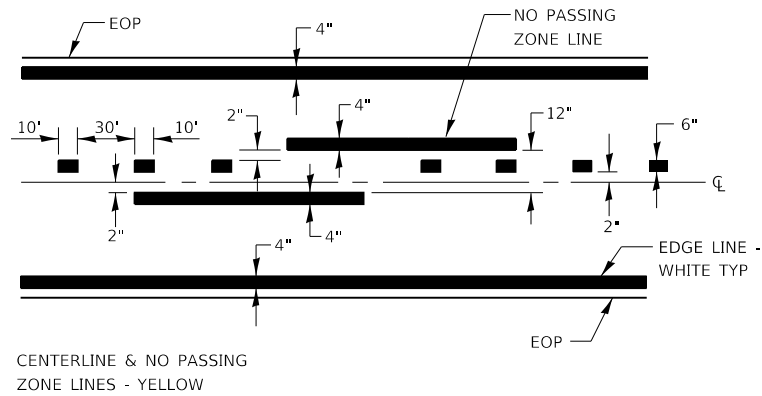
MODEL: Default
 FILE: \\nas1c1.pw.us.ibm.com\data\illinois.gov\PW\DOT\Documents\DOT_Offices\District_3\Projects\10366K29\CADD\data\10366K29-1r-sheet1.dgn

USER NAME = NOLASCOCJ	DESIGNED -	REVISED -
	DRAWN -	REVISED -
PLOT SCALE = 100.0000' / in.	CHECKED -	REVISED -
PLOT DATE = 12/13/2019	DATE -	REVISED -

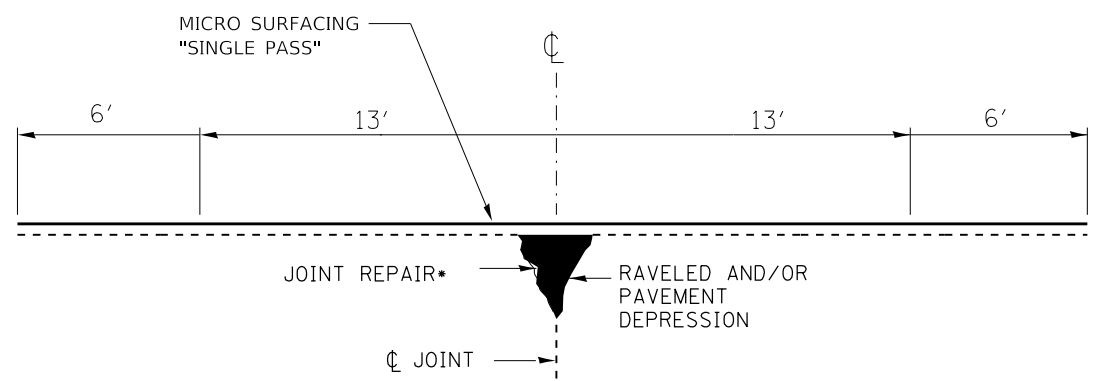
**STATE OF ILLINOIS
DEPARTMENT OF TRANSPORTATION**

LINE DIAGRAM			
SCALE:	SHEET 1	OF 1 SHEETS	STA. TO STA.

F.A.P. RTE. 619	SECTION 103RS-5	COUNTY PUT. LAS	TOTAL SHEETS 8	SHEET NO. 7
CONTRACT NO. 66K29				
ILLINOIS FED. AID PROJECT				

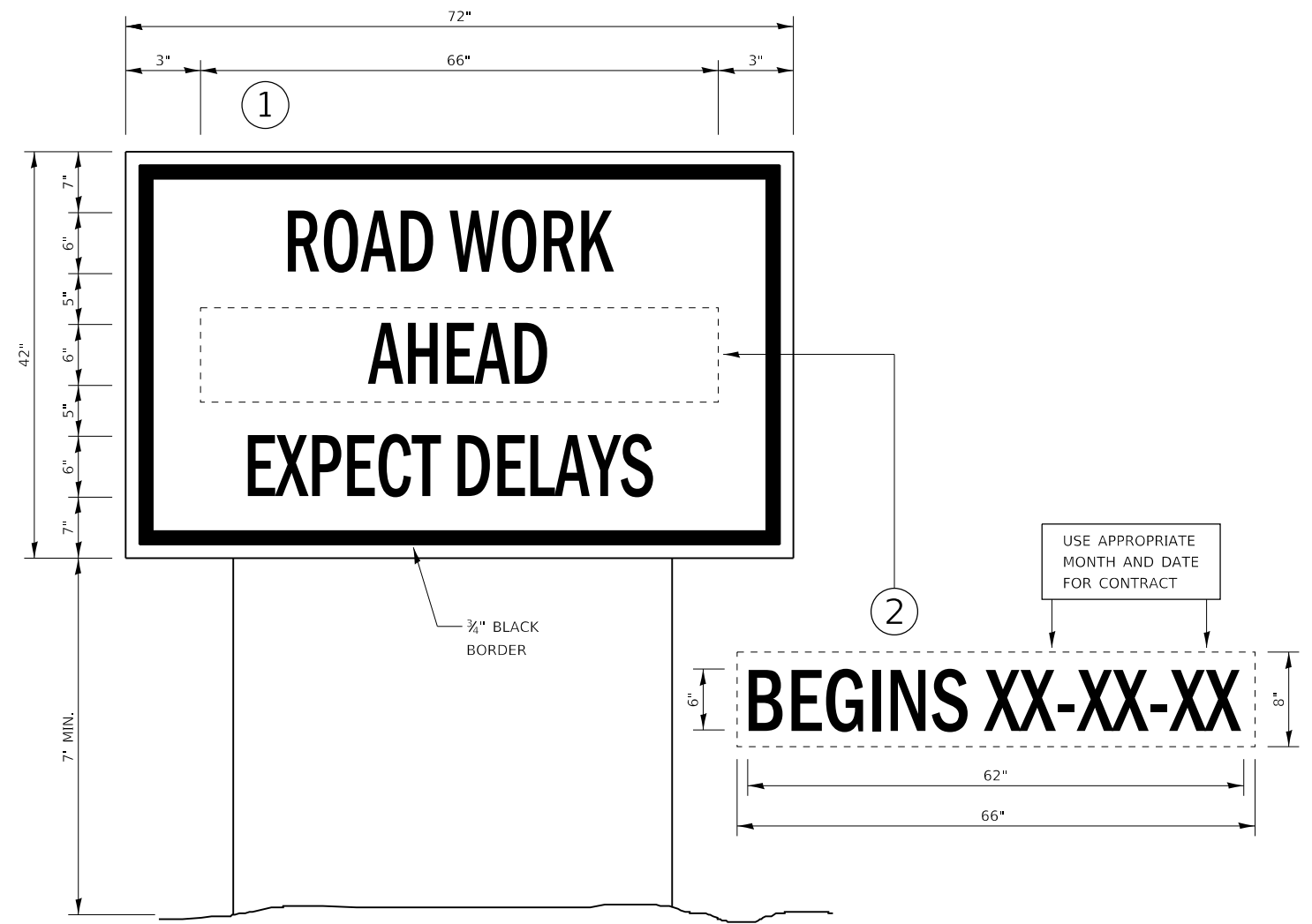


PAVEMENT MARKING



MICRO-SURFACING DETAIL

• FIBER-MODIFIED ASPHALT CRACK SEALING
(AT CENTER LINE, TRANSVERSE AND LONGITUDUNAL CRACKS AS NECESSARY)



TEMPORARY INFORMATION SIGNING

NOTES:

- USE 6" D BLACK LETTERING ON FLUORESCENT ORANGE BACKGROUND.
- ERECT SIGNS AT LOCATIONS IN ADVANCE OF THE "ROAD CONSTRUCTION AHEAD" SIGNS AS DIRECTED BY THE ENGINEER.
- ERECT SIGN ① WITH INSTALLED PANEL ② A MINIMUM OF ONE WEEK PRIOR TO THE START OF THE LANE CLOSURE.
- REMOVE PANEL ② ON THAT DATE.
- SEE SPECIAL PROVISION "TEMPORARY INFORMATION SIGNING" FOR ADDITIONAL INFORMATION.
- WILL BE PAID FOR PER SQ FT AS "TEMPORARY INFORMATION SIGNING". EACH SIGN = 21 SQ FT AND THE DATE PANEL ② WILL NOT BE MEASURED SEPARATELY FOR PAYMENT.

MODEL: Default
FILE: Model: 300\pub\planroom.dwg\Illinois.gov\PIW\DOT\Documents\DOT_Offices\Illinrct_3\Projects\0366K29\CADD\0366K29-01r-detailed.dgn

USER NAME = NOLASCOCJ	DESIGNED -	REVISED -
	DRAWN -	REVISED -
PLOT SCALE = 100,0000' / in.	CHECKED -	REVISED -
PLOT DATE = 12/13/2019	DATE -	REVISED -

**STATE OF ILLINOIS
DEPARTMENT OF TRANSPORTATION**

DETAILS			
SCALE:	SHEET 1	OF 1	SHEETS
	STA.		TO STA.

F.A.P. RTE.	SECTION	COUNTY	TOTAL SHEETS	SHEET NO.
619	103RS-5	PUT. LAS	8	8
CONTRACT NO. 66K29			ILLINOIS FED. AID PROJECT	