

CODE NO.	ITEM	UNIT	TOTAL QUANTITY	6-60103-0000	6-60103-0100	6-60103-0200
				ROADWAY 0005	ROADWAY 0005	BRIDGE 0047
				RURAL	RURAL	054-0031
35501320	HOT-MIX ASPHALT BASE COURSE,9"	SQ YD	797		797	
35800100	PREPARATION OF BASE	SQ YD	249	249		
35800200	AGGREGATE BASE REPAIR	TON	6	6		
40200800	AGGREGATE SURFACE COURSE, TYPE B	TON	43	43		
40600290	BITUMINOUS MATERIALS (TACK COAT)	POUND	97,904	97,342	562	
40600982	HOT-MIX ASPHALT SURFACE REMOVAL - BUTT JOINT	SQ YD	2,275	2,275		
40600990	TEMPORARY RAMP	SQ YD	1,907	1,764	143	
40603080	HOT-MIX ASPHALT BINDER COURSE, IL-19.0, N50	TON	16,879	16,879		
40604150	POLYMERIZED HOT-MIX ASPHALT SURFACE COURSE, IL-9.5, MIX "C", N50	TON	11,809	11,674	135	
40800050	INCIDENTAL HOT-MIX ASPHALT SURFACING	TON	273	273		
44000100	PAVEMENT REMOVAL	SQ YD	832		832	
44000155	HOT-MIX ASPHALT SURFACE REMOVAL,1 1/2"	SQ YD	136,926	136,926		
44000161	HOT-MIX ASPHALT SURFACE REMOVAL,3"	SQ YD	2,793	2,793		
44200156	PAVEMENT PATCHING, TYPE II, 13 INCH	SQ YD	106	106		

△ REV. 2-20-2020

REV. - MS

FILE NAME =	USER NAME = JACKCA	DESIGNED -	REVISED -	STATE OF ILLINOIS DEPARTMENT OF TRANSPORTATION	SUMMARY OF QUANTITIES FAP 71 (IL 54)			F.A.P. RTE.	SECTION	COUNTY	TOTAL SHEETS	SHEET NO.
pw:\planroom.dot.illinois.gov:PWIDOT\Documents\DOT Offices\District 6\Projects\67277\CADData\CADSheet\67277-shr-S00.dgn		CHECKED -	REVISED -					71	*	LOGAN	63	5
Default	PLOT SCALE = 100.0000 ' / in.	DATE -	REVISED -		SCALE:	SHEET 2	OF 5	SHEETS	STA.	TO STA.	ILLINOIS FED. AID PROJECT	
	PLOT DATE = 12/13/2019	DATE -	REVISED -		* (2) RS-3, BJR, (10) RS-4, N							

CODE NO.	ITEM	UNIT	TOTAL QUANTITY	6-60103-0000	6-60103-0100	6-60103-0200
				ROADWAY 0005	ROADWAY 0005	BRIDGE 0047
				RURAL	RURAL	054-0031
* 78200005	GUARDRAIL REFLECTORS, TYPE A	EACH	16	16		
78300200	RAISED REFLECTIVE PAVEMENT MARKER REMOVAL	EACH	593	593		△
X7011800	TRAFFIC CONTROL AND PROTECTION BLR 21	L SUM	1		1	
52000025	PREFORMED JOINT SEAL 2"	FOOT	37			37
Z0034105	MATERIAL TRANSFER DEVICE	TONS	11,809	11,809		
X6330900	VERTICAL ADJUSTMENT OF GUARDRAIL	FOOT	288	288		
∅ Z0076600	TRAINEES	HOUR	2000	2000		
Z0033700	LONGITUDINAL JOINT SEALANT	FOOT	47,377	47,377		
∅ Z0076604	TRAINEES TRAINING PROGRAM GRADUATE	HOUR	2000	2000		
Z0041895	POLYMER CONCRETE	CU FT	15			15

* SPECIALTY ITEM

∅ 0042

△ REV. 2-20-2020

REV. - MS

FILE NAME =	USER NAME = JACKCA	DESIGNED -	REVISED -	STATE OF ILLINOIS DEPARTMENT OF TRANSPORTATION	SUMMARY OF QUANTITIES FAP 71 (IL 54)	F.A.P. RTE.	SECTION	COUNTY	TOTAL SHEETS	SHEET NO.	
pw:\planroom.dot\illinois.gov.PWIDOT\Documents\DOT Offices\District 6\Projects\0672F77\CADData\CAD\$P\0672F77-sht-S00.dgn		CHECKED -	REVISED -			71	*	LOGAN	63	8	
PLOT SCALE = 100.0000' / in.		DATE -	REVISED -			CONTRACT NO. 72F77					
Default		PLOT DATE = 12/13/2019	REVISED -			SCALE:	SHEET 5	OF 5	SHEETS	STA.	TO STA.

* (2) RS-3, BJR, (10) RS-4, N

40600290 - BITUMINOUS MATERIALS (TACK COAT) - 2 APPLICATIONS						
BITUMINOUS MATERIALS (TACK COAT) MILLED HMA RATE=		0.05 LB/SF				
BITUMINOUS MATERIALS (TACK COAT) HMA LIFTS RATE=		0.025 LB/SF				
LOCATION			LENGTH (FOOT)	WIDTH (FOOT)	AREA (SQ YD)	QUANTITY (POUND)
STA 455+75.11	TO	STA 554+66.51	9,891.4	26	28,575.2	19288.2
OMISSION: STA 554+66.51 TO STA 559+21.19						
STA 559+21.19	TO	STA 670+80.43	11,159.2	26	32,237.8	21760.5
STA 670+80.43	TO	STA 680+92.76	1,012.3	24	2,699.5	1822.2
LT STA 680+92.76	TO	LT STA 860+46.73	17,954.0	13	25,933.5	17505.1
RT STA 680+92.76	TO	RT STA 860+97.23	18,004.5	13	26,006.5	17554.4
LT STA 860+46.73	TO	LT STA 913+28.70	5,282.0	16	9,390.2	6338.4
RT STA 860+97.23	TO	RT STA 913+28.70	5,231.5	16	9,300.4	6277.8
STA EQN: STA 913+28.70 BK = STA 913+52.58 AH						
LT STA 913+52.58	TO	LT STA 917+43.01	390.4	16	694.1	468.5
RT STA 913+52.58	TO	RT STA 917+27.86	375.3	16	667.2	450.3
LT STA 917+43.01	TO	LT STA 918+24.04	81.0	16-22	146.0	98.6
RT STA 917+27.86	TO	RT STA 917+68.75	40.9	16-24	79.2	53.5
LT STA 918+24.04	TO	LT STA 934+30.21	1,606.2	24	4,283.1	2891.1
RT STA 917+68.75	TO	RT STA 934+30.21	1,661.5	22	4,061.3	2741.4
SUBTOTAL 1:						97250
CH1 STA 8+58.96	TO	CH1 STA 9+87.26	*MEASURED IN MICROSTATION		422.6	285.2
CH1 STA 10+13.14	TO	CH1 STA 11+33.94	*MEASURED IN MICROSTATION		409.2	276.2
SUBTOTAL 2:						562.0
ENTRANCE TOTAL (INCLUDING CH1):						654.5
GRAND TOTAL=						97,904



40603080 - HOT-MIX ASPHALT BINDER COURSE, IL-19.0, N50							
LOCATION			LENGTH (FOOT)	WIDTH (FOOT)	AREA (SQ YD)	THICKNESS (IN)	QUANTITY (TON)
STA 455+75.11	TO	STA 554+66.51	9,891.4	26	28,575.2	2.25	3,600.5
OMISSION: STA 554+66.51 TO STA 559+21.19							
STA 559+21.19	TO	STA 670+80.43	11,159.2	26	32,237.8	2.25	4,062.0
STA 670+80.43		STA 680+92.76					
STA 680+92.76	TO	STA 913+28.70					
STA EQN: STA 913+28.70 BK = STA 913+52.58 AH							
STA 913+52.58	TO	STA 917+46.11	393.5	26	1,136.9	2.25	143.2
STA 917+46.11	TO	STA 934+30.21	1,684.1	24	4,490.9	2.25	565.9
SUPERELEVATION CORRECTIONS:							50.0
TOTAL:							16,879

1 REV. 2-20-2020

HOT-MIX ASPHALT SURFACE REMOVAL										
LOCATION			DEPTH	LENGTH	WIDTH	HMA SURF REMOVAL, 3" 44000161 (SQ YD)	HMA SURF REMOVAL, 1 1/2" 44000155 (SQ YD)	HMA SURF REMOVAL, BUTT JOINT 40600982 (SQ YD)	TEMPORARY RAMP 40600990 (SQ YD)	PAVEMENT REMOVAL 44000100 (SQ YD)
			(INCH)	(FOOT)	(FOOT)					
STA 455+75.11	TO	STA 456+10.11		45	26			130.00	14.4	
STA 456+10.11	TO	STA 554+23.67	1 1/2	9,813.6	26		28,350.3			
STA 554+13.68	TO	STA 554+66.51		45	26			156.67	14.4	
OMISSION: STA 554+66.51 TO STA 559+21.19										
STA 559+21.19	TO	STA 559+73.94		45	26			153.89	14.4	
STA 559+73.94	TO	STA 670+80.43	1 1/2	11,106.5	26		32,085.4			
STA 670+80.43	TO	STA 681+27.76	3	1,047.3	24	2,792.9				
LT STA 681+27.76	TO	LT STA 913+28.70	1 1/2	23,200.9	13		33,512.5			
RT STA 681+27.76	TO	RT STA 913+28.70	1 1/2	23,200.9	13		33,512.5			
STA EQN: STA 913+28.70 BK = STA 913+52.58 AH										
LT STA 913+52.58	TO	LT STA 917+45.71	1 1/2	393.1	13		567.9			
RT STA 913+52.58	TO	RT STA 917+46.16	1 1/2	393.6	13		568.5			
LT STA 917+45.71	TO	LT STA 918+24.04	1 1/2	78.3	3-10		48.4			
RT STA 917+46.16	TO	RT STA 917+68.75	1 1/2	22.6	3-12		19.7			
LT STA 917+45.71	TO	LT STA 918+24.04	1 1/2	78.3	12		104.4			
RT STA 917+46.16	TO	RT STA 917+68.75	1 1/2	22.6	12		30.1			
LT STA 918+24.04	TO	LT STA 933+85.20	1 1/2	1,561.2	22		3,816.2			
RT STA 917+68.75	TO	RT STA 933+85.20	1 1/2	1,616.5	24		4,310.5			
STA 933+85.20	TO	STA 934+30.20		45	46			230.00	14.4	
SUBTOTAL 1:						2,792.9	136,926.3	670.56	57.6	0.0
CH1 STA 8+58.96	TO	CH1 STA 9+87.26	FULL DEPTH	MEASURED IN MICROSTATION					74.3	422.56
CH1 STA 10+13.14	TO	CH1 STA 11+33.94	FULL DEPTH	MEASURED IN MICROSTATION					68.8	409.22
SUBTOTAL 2:						0.0	0.0	0.0	143.1	831.8
Entrance Quantities:								1604.4	1706	
GRAND TOTAL:						2,793	136,926	2275	1907	832

1 REVISED SHEET 2-20-2020

FILE NAME =	USER NAME = JACKCA	DESIGNED -	REVISED -	STATE OF ILLINOIS DEPARTMENT OF TRANSPORTATION	SCHEDULE OF QUANTITIES FAP 71 (IL 54)			F.A.P. RTE.	SECTION	COUNTY	TOTAL SHEETS	SHEET NO.
pw:\planroom.dot.illinois.gov.PWIDOT\Documents\DOT Offices\District 6\Projects\672F77\CADData\CADSheet\DRAWN\F77.sht:schedule.dgn		REVISION	REVISION					71		LOGAN	63	14
PLOT SCALE = 100.0000' / in.	CHECKED -	REVISION	REVISION					CONTRACT NO. 72F77				
Default	DATE -	REVISION	REVISION					SCALE:	SHEET 6	OF 12 SHEETS	STA.	TO STA.

* (2) RS-3, BJR, (10) RS-4, N

48203100 - HOT-MIX ASPHALT SHOULDERS							
LOCATION			LENGTH (FOOT)	WIDTH (FOOT)	AREA (SQ YD)	DEPTH (IN)	QUANTITY (TON)
LT STA 553+01.83	TO	LT STA 554+66.51	165	3	54.9	3	9.2
RT STA 553+01.83	TO	RT STA 554+66.51	165	3	54.9	3	9.2
LT STA 559+21.19	TO	LT STA 560+45.52	124	3	41.4	3	7.0
RT STA 559+21.19	TO	RT STA 560+45.52	124	3	41.4	3	7.0
LT STA 860+62.81	TO	LT STA 878+22.41	1,760	3	586.5	1.5	49.3
RT STA 860+62.81	TO	RT STA 878+22.41	1,760	3	586.5	1.5	49.3
LT STA 878+22.41	TO	LT STA 913+28.70	3,506	3	1,168.8	1.5	98.2
RT STA 878+22.41	TO	RT STA 913+28.72	3,506	3	1,168.8	1.5	98.2
STA EQN: STA 913+28.70 BK= STA 913+52.58 AH							
LT STA 913+52.58	TO	LT STA 914+05.94	53	3	17.8	1.5	1.5
RT STA 913+52.58	TO	RT STA 914+05.94	53	3	17.8	1.5	1.5
LT STA 914+05.94	TO	LT STA 917+43.01	337	3	112.4	1.5	9.4
RT STA 914+05.94	TO	RT STA 917+27.86	322	3	107.3	1.5	9.0
LT STA 917+43.01	TO	LT STA 918+24.04	81	0-10	45.0	3	7.6
RT STA 917+27.86	TO	RT STA 917+68.75	41	0-12	27.3	3	4.6
LT STA 918+24.04	TO	LT STA 934+30.21	1,606	10	1,784.6	3	299.8
RT STA 917+68.75	TO	RT STA 934+30.21	1,661	12	2,215.3	3	372.2
SUBTOTAL 1:							1033.0
CH1 STA 8+58.96	TO	CH1 STA 9+87.26	MEASURED IN MICROSTATION		71.2	1.5	6.0
CH1 STA 9+18.58	TO	CH1 STA 9+87.27	MEASURED IN MICROSTATION		68.3	1.5	5.7
CH1 STA 10+13.14	TO	CH1 STA 11+33.94	MEASURED IN MICROSTATION		67.9	1.5	5.7
CH1 STA 10+13.15	TO	CH1 STA 10+81.43	MEASURED IN MICROSTATION		68.3	1.5	5.7
SUBTOTAL 2:							24.0
GRAND TOTAL:.							1057

BRIDGE						
LOCATION			CONCRETE REMOVAL 50102400 (CU YD)	PREFORMED JOINT SEAL 2" 52000025 (FOOT)	PREFORMED JOINT SEAL 2-1/2" 52000030 (FOOT)	POLYMER CONCRETE Z0041895 (CU FT)
STA 554+66.51	TO	STA 559+21.19	1	37	37	15
TOTAL:			1	37	37	15

1 REV. 2-20-2020

FILE NAME =	USER NAME = JACKCA	DESIGNED -	REVISED -	STATE OF ILLINOIS DEPARTMENT OF TRANSPORTATION	SCHEDULE OF QUANTITIES FAP 71 (IL 54)			F.A.P. RTE.	SECTION	COUNTY	TOTAL SHEETS	SHEET NO.
pw:\planroom.dot.illinois.gov.PWIDOT\Documents\DOT Offices\District 6\Projects\672F77\CADData\CADSheet\DRAWN\F77.sht.schedule.dgn		CHECKED -	REVISED -		71	+	LOGAN	63	16			
PLOT SCALE = 100.0000' / in.		DATE -	REVISED -		SCALE: SHEET 8 OF 12 SHEETS STA. TO STA.			ILLINOIS FED. AID PROJECT				
Default					CONTRACT NO. 72F77							

FAP 71 (IL 54) ENTRANCE SCHEDULE

LOCATION	NAME / TYPE	(3) FRONT WIDTH (FT)	(2) REAR WIDTH (HMA) (FT)	AGGREGATE BASE REPAIR THICKNESS (IN)	THICKNESS (IN)	DISTANCE FROM EOP (FT)	EX MATERIAL	PREPARATION OF BASE 35800100 (SQ YD)	AGGREGATE BASE REPAIR 35800200 (TON)	INCIDENTAL HMA SURFACING 40800050 (TON)	AGGREGATE SURFACE, TYPE B 40200800 (TON)	TEMPORARY RAMP 40600990 (SQ YD)	HMA SURF. REM. BUTT JOINT 40600982 (SQ YD)	PAVEMENT REMOVAL 44000100 (SQ YD)	BITUMINOUS TACK COAT 40600290 (POUND)
RT STA 470+30.18	SR (TR 122 BRYSON RD)	MEASURED IN MICROSTATION			3	8	O&C			12.2		83.0	72.3		3.6
LT STA 470+75.10	SR (TR 122 BRYSON RD)	MEASURED IN MICROSTATION			3	7	O&C			11.7		89.8	69.8		3.5
LT STA 482+61.50	SR (LOCUST AVE)	MEASURED IN MICROSTATION			3	10	O&C			11.9		70.5	70.6		3.5
LT STA 485+02.26	SR (TR 475)	MEASURED IN MICROSTATION		2	3	8	AGG	39.2	3.5	23.1		181.6	98.4		6.9
RT STA 505+83.70	SR (TR 245)	MEASURED IN MICROSTATION			3	8	O&C			9.6		68.6	57.2		2.9
RT STA 550+53.03	SR (TR 154)	MEASURED IN MICROSTATION			3	10	O&C			12.4		73.7	73.7		3.7
LT STA 551+17.95	SR (TR 154)	MEASURED IN MICROSTATION			3	8	O&C			14.9		104.1	88.5		4.4
RT STA 575+56.37	PE	30.0	20.9	2	3	5	HMA / AGG	24.8	2.2	4.2	3.7		14.1		1.9
RT STA 598+49.08	PE	27.5	18.8		3	5	HMA / AGG	20.5		3.4	2.9		12.9		1.7
RT STA 600+50.00	PE (Cell Tower)	MEASURED IN MICROSTATION					HMA								
RT STA 631+91.99	SR (TR 176)	MEASURED IN MICROSTATION			3	7	O&C			13.3		101.6	79.3		4.0
LT STA 632+59.44	SR (TR 176)	MEASURED IN MICROSTATION			3	7	O&C			10.8		80.9	64.0		3.2
RT STA 666+17.05	PE	30.5	21.1		3	6	HMA / AGG	33.6		5.6	5.5		17.2		2.5
RT STA 668+19.09	PE	23.3	13.7		3	5	HMA / AGG	32.0		5.4	3.7		10.3		2.1
RT STA 668+88.32	SR (ELM ST)	MEASURED IN MICROSTATION			3	5	HMA / AGG	36.5		6.1	3.0		10.0		1.8
RT STA 670+95.39	SR (TR 451 MULBERRY ST)	MEASURED IN MICROSTATION			3	7	HMA			11.6		86.7	68.9		3.4
RT STA 674+00.00	PE	21.0	14.3		3	5	HMA / AGG	23.4		3.9	2.1		8.8		1.6
RT STA 675+74.35	SR (TR 455 OAK ST)	MEASURED IN MICROSTATION			3	9	O&C			27.9		181.9	165.9		8.3
RT STA 675+88.56	SR (TR 454 WALNUT ST)	MEASURED IN MICROSTATION					O&C								
RT STA 679+95.41	SR (TR 178)	MEASURED IN MICROSTATION			3	7	O&C			10.8		82.8	64.2		4.1
LT STA 680+43.81	SR (FAS 561 CH 9)	MEASURED IN MICROSTATION					HMA								
RT STA 705+46.59	SR (TR 221)	MEASURED IN MICROSTATION			3	8	HMA			16.6		119.6	98.7		4.9
RT STA 745+32.07	SR (TR 212)	MEASURED IN MICROSTATION			3	8	HMA			11.7		85.3	69.8		3.5
LT STA 745+88.57	SR (TR 212)	MEASURED IN MICROSTATION			3	8	O&C			11.2		80.1	66.4		3.3
RT STA 761+00.00	PE	MEASURED IN MICROSTATION			3	10	HMA			16.7		124.1	99.7		5.0
RT STA 806+81.87	SR (TR 218)	MEASURED IN MICROSTATION			3	8	O&C			5.6		44.0	33.6		1.7
LT STA 806+88.29	SR (TR 218)	MEASURED IN MICROSTATION			3	7	O&C			6.2		47.4	37.1		1.9
RT STA 843+90.88	PE	32.7	18.6		3	6	HMA / AGG	14.7		2.5	2.7		17.1		1.6
RT STA 845+27.35	PE	36.0	23.9		3	8	HMA / AGG	9.5		1.6	3.4		26.6		1.8
LT STA 859+83.10	SR (FAS 562 CH 1)	176.3	26		3	94	HMA							409.2	276.2
RT STA 859+83.10	SR (FAS 562 CH 1)	178.8	24		3	102	HMA							422.6	285.2
RT STA 915+09.60	CE	43.4	32.2		3	8	HMA	15.0		2.5	3.1		33.6		2.4
RT STA 917+75.00	CE	MEASURED IN MICROSTATION			3	7	HMA				8.9		53.0		2.7
RT STA 922+05.00	CE	45.0	35.0		3	7	HMA				3.8		22.5		1.1
TOTALS:								249	6	273	43	1706	1604	832	655

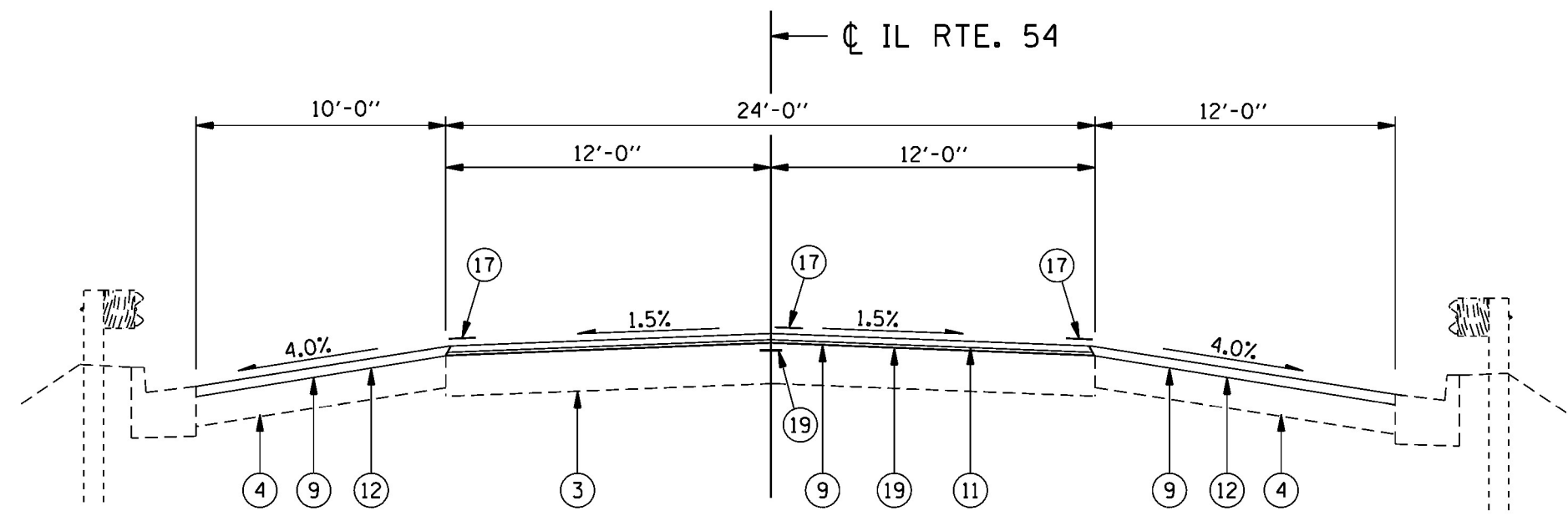
1 REVISED SHEET 2-20-2020

FILE NAME =	USER NAME = JACKCA	DESIGNED -	REVISED -	STATE OF ILLINOIS DEPARTMENT OF TRANSPORTATION	SCHEDULE OF QUANTITIES FAP 71 (IL 54)				F.A.P. RTE.	SECTION	COUNTY	TOTAL SHEETS	SHEET NO.
pw:\planroom.dot.illinois.gov\PWIDOT\Documents\DOT Offices\District 6\Projects\D672F77\CADData\CADSheet\DRAWN\F77.sht:schedule.dgn		CHECKED -	REVISED -						71	+	LOGAN	63	20
PLOT SCALE = 100.0000' / in.		DATE -	REVISED -		SCALE: SHEET 12 OF 12 SHEETS STA. TO STA.				CONTRACT NO. 72F77				
Default									ILLINOIS FED. AID PROJECT				

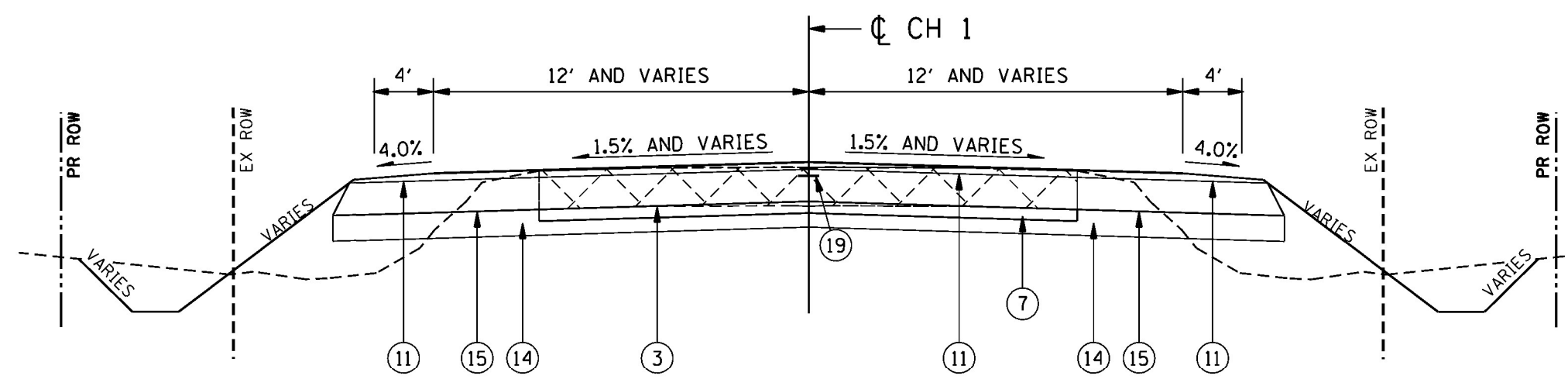
* (2) RS-3, BJR, (10) RS-4, N

LEGEND

- ① EX HMA SURFACE COURSE
- ② EX PCC PAVEMENT (9-7-9)
- ③ EX HMA PAVEMENT
- ④ EX HMA SHOULDER, 8"
- ⑤ EX AGGREGATE SHOULDER
- ⑥ EX COMBINATION CONCRETE CURB AND GUTTER
- ⑦ EX CEMENT STABILIZED BASE
- ⑧ PR HMA SURFACE REMOVAL, (1 1/2")
- ⑨ PR HMA SURFACE REMOVAL, (3")
- ⑩ PR HMA BINDER COURSE, (2 1/4")
- ⑪ PR POLYMERIZED HMA SURFACE COURSE, (1 1/2")
- ⑫ PR HMA SHOULDER (3")
- ⑬ PR HMA SHOULDERS, 6 1/2"
- ⑭ PR HMA SUBBASE GRAN MATERIAL, TYPE A 8"
- ⑮ PR HMA BASE COURSE, 9"
- ⑯ PR AGGREGATE WEDGE SHOULDERS, TYPE B
- ⑰ PR PAVEMENT MARKING - LINE 5"
- ⑱ PR HMA SHOULDERS, (1 1/2")
- ⑲ PR LONGITUDINAL JOINT SEALANT



TYPICAL SECTION #9
 STA 932+86.20 TO STA 934+30.21



TYPICAL SECTION #10
 CH 1 STA 8+58.96 TO STA 9+87.26
 CH 1 STA 10+13.14 TO STA 11+33.94

NOTES:

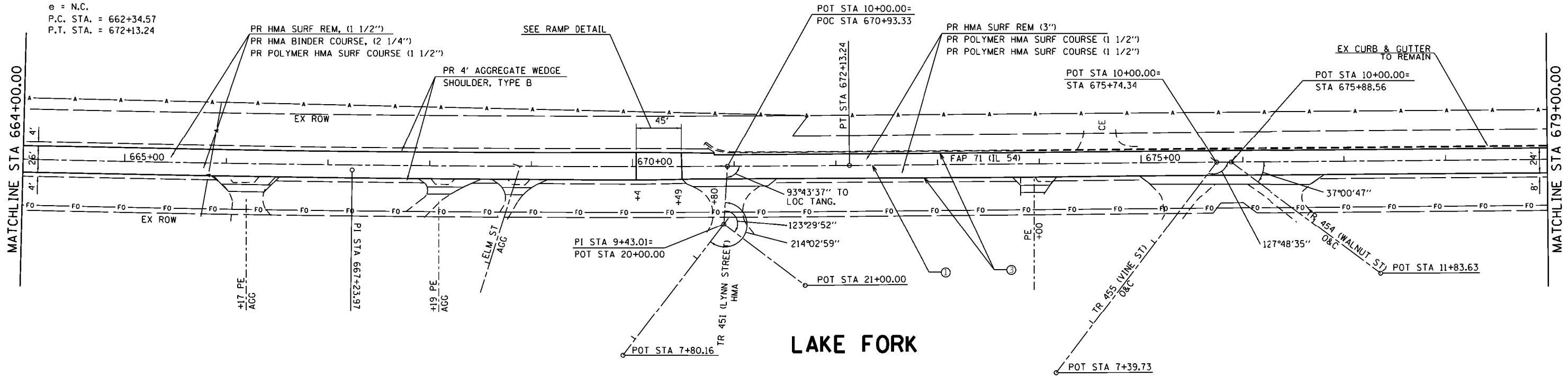
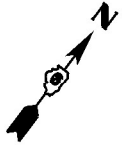
- * SEE "SUPERELEVATION TRANSITION DETAILS" FOR S.E. TABLE.
- ** HIGH SIDE
 WHEN THE SUPERELEVATION RATE OF THE PAVEMENT IS BETWEEN 0% AND 4%, THE SHOULDER SHALL BE SLOPED AT 4%. WHEN THE SUPERELEVATION RATE OF THE PAVEMENT EXCEEDS 4%, THE SHOULDER SHALL BE SLOPED SO THAT THE ALGEBRAIC DIFFERENCE BETWEEN PAVEMENT AND SHOULDER WILL NOT BE GREATER THAN 8%.
- *** LOW SIDE
 CROSS SLOPE SHALL BE THE SAME AS THE SUPERELEVATION RATE WHEN THE SE IS GREATER THAN 4%. OTHERWISE THE CROSS SLOPE SHALL BE 4%.

1 REVISED SHEET 2-20-2020

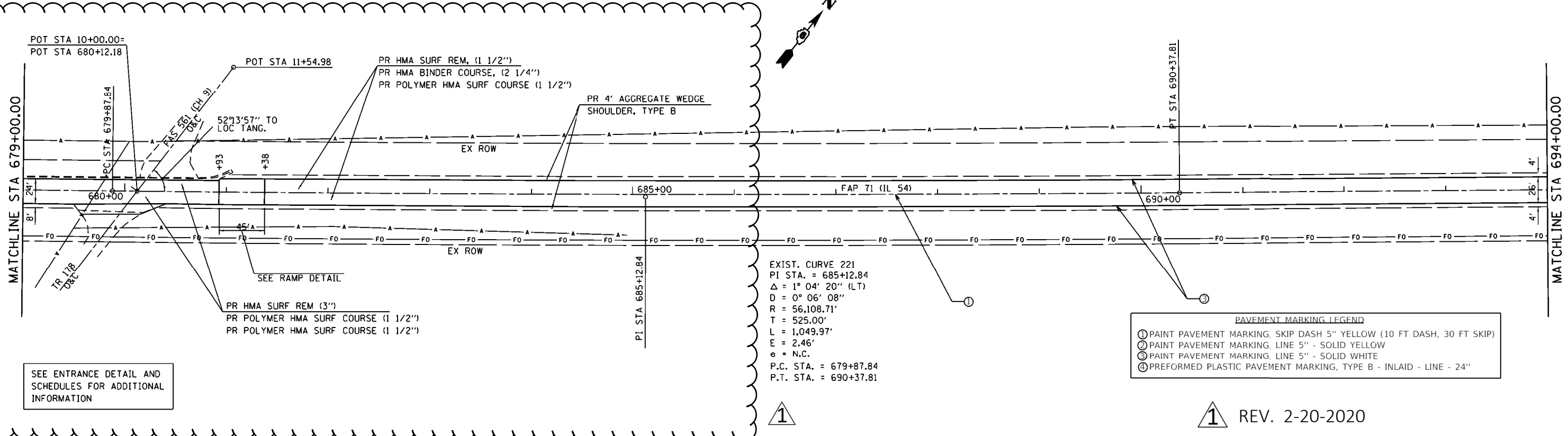
FILE NAME =	USER NAME = JACKCA	DESIGNED -	REVISED -	STATE OF ILLINOIS DEPARTMENT OF TRANSPORTATION	TYPICAL SECTIONS FAP 71 (IL 54)	F.A.P. RTE. 71	SECTION *	COUNTY LOGAN	TOTAL SHEETS 63	SHEET NO. 25	
pw:\planroom.dot.illinois.gov\PWIDOT\Documents\DOT Offices\District 6\Projects\D672F77\CADData\CADSheet\DRAWN\F77.sbt-typical.dgn	PLOT SCALE = 6.4198' / in.	CHECKED -	REVISED -			CONTRACT NO. 72F77					
Default	PLOT DATE = 2/13/2020	DATE -	REVISED -			ILLINOIS FED. AID PROJECT					
						SCALE: SHEET OF SHEETS STA. TO STA.					

* (2) RS-3, BJR, (10) RS-4, N

EXIST. CURVE 220
 PI STA. = 667+23.97
 $\Delta = 2^\circ 17' 57''$ (LT)
 $D = 0^\circ 14' 06''$
 $R = 24,388.29'$
 $T = 489.40'$
 $L = 978.67'$
 $E = 4.91'$
 $e = N.C.$
 P.C. STA. = 662+34.57
 P.T. STA. = 672+13.24



LAKE FORK



1

1 REV. 2-20-2020

EXIST. CURVE 221
 PI STA. = 685+12.84
 $\Delta = 1^\circ 04' 20''$ (LT)
 $D = 0^\circ 06' 08''$
 $R = 56,108.71'$
 $T = 525.00'$
 $L = 1,049.97'$
 $E = 2.46'$
 $e = N.C.$
 P.C. STA. = 679+87.84
 P.T. STA. = 690+37.81

PAVEMENT MARKING LEGEND			
①	PAINT PAVEMENT MARKING, SKIP DASH 5" YELLOW (10 FT DASH, 30 FT SKIP)		
②	PAINT PAVEMENT MARKING, LINE 5" - SOLID YELLOW		
③	PAINT PAVEMENT MARKING, LINE 5" - SOLID WHITE		
④	PREFORMED PLASTIC PAVEMENT MARKING, TYPE B - INLAID - LINE - 24"		

SEE ENTRANCE DETAIL AND SCHEDULES FOR ADDITIONAL INFORMATION

FILE NAME =	USER NAME = JACKCA	DESIGNED -	REVISED -	STATE OF ILLINOIS DEPARTMENT OF TRANSPORTATION	PLAN SHEET FAP 71 (IL 54)	F.A.P. RTE.	SECTION	COUNTY	TOTAL SHEETS	SHEET NO.	
pw:\planroom.dot.illinois.gov\PWIDOT\Documents\DOT Offices\District 6\Projects\D672F77\CADDData\CADSheet\DRAWN77 - PLAN.dgn	PLOT SCALE = 100.0000 "/in.	CHECKED -	REVISED -			71		LOGAN	63	36	
Default	PLOT DATE = 2/13/2020	DATE -	REVISED -			CONTRACT NO. 7277					
						ILLINOIS FED. AID PROJECT					

* (2) RS-3, BJR, (10) RS-4, N

MATCHLINE STA 754+00.00

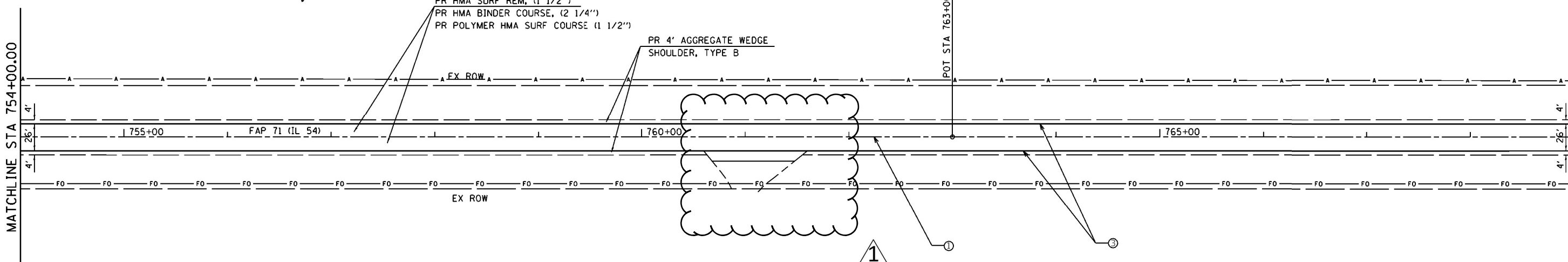
MATCHLINE STA 769+00.00



PR HMA SURF REM, (1 1/2")
PR HMA BINDER COURSE, (2 1/4")
PR POLYMER HMA SURF COURSE (1 1/2")

PR 4' AGGREGATE WEDGE
SHOULDER, TYPE B

POT. STA. 763+00.00



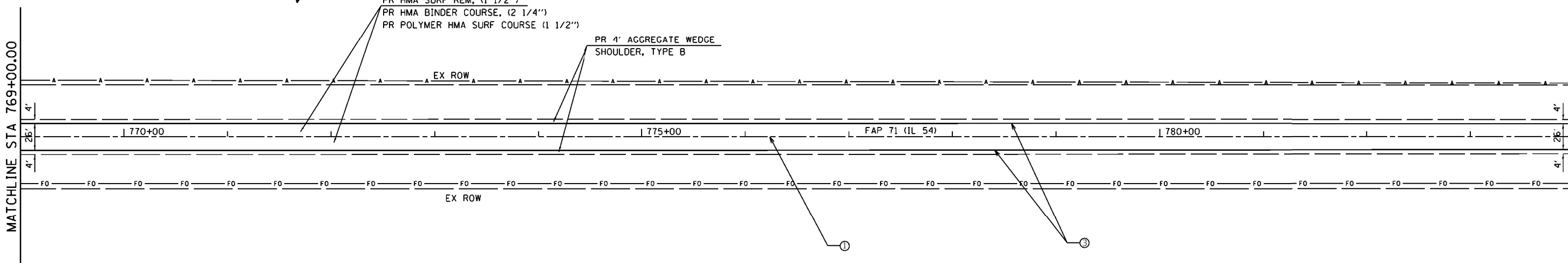
MATCHLINE STA 769+00.00

MATCHLINE STA 784+00.00



PR HMA SURF REM, (1 1/2")
PR HMA BINDER COURSE, (2 1/4")
PR POLYMER HMA SURF COURSE (1 1/2")

PR 4' AGGREGATE WEDGE
SHOULDER, TYPE B



SEE ENTRANCE DETAIL AND
SCHEDULES FOR ADDITIONAL
INFORMATION

1 REV. 2-20-2020

PAVEMENT MARKING LEGEND			
①	PAINT PAVEMENT MARKING, SKIP DASH 5" YELLOW (10 FT DASH, 30 FT SKIP)		
②	PAINT PAVEMENT MARKING, LINE 5" - SOLID YELLOW		
③	PAINT PAVEMENT MARKING, LINE 5" - SOLID WHITE		
④	PREFORMED PLASTIC PAVEMENT MARKING, TYPE B - INLAID - LINE - 24"		

FILE NAME =	USER NAME = JACKCA	DESIGNED -	REVISED -
pw:\planroom.dot.illinois.gov\PWIDOT\Documents\DOT Offices\District 6\Projects\D672F77\CADDData\CADSheet\DRAWN77 - PLAN.dgn		DRAWN -	REVISED -
PLOT SCALE = 100.0000 "/ in.	CHECKED -	REVISOR -	REVISED -
Default	DATE -	REVISIONS -	REVISED -

STATE OF ILLINOIS
DEPARTMENT OF TRANSPORTATION

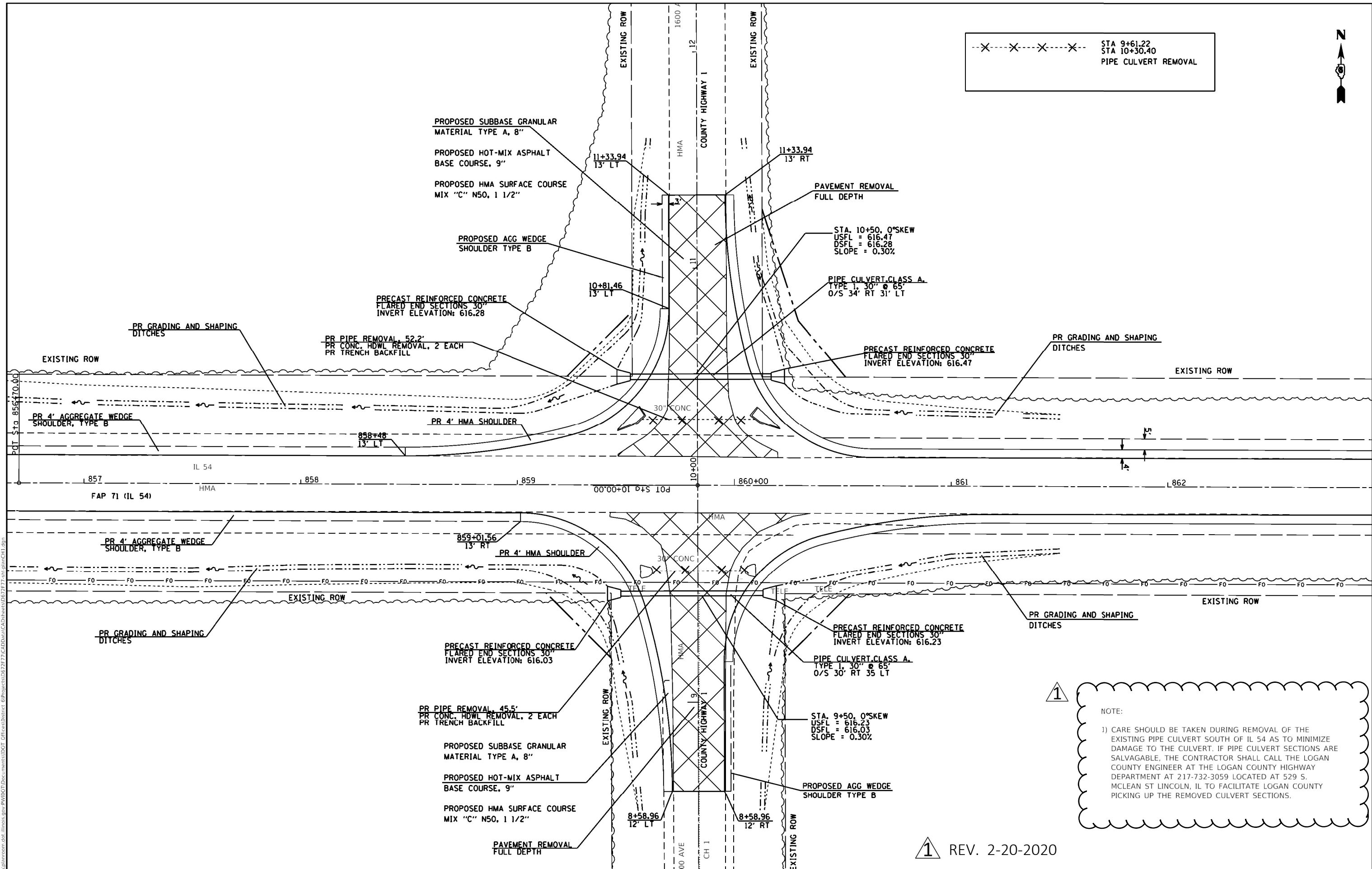
PLAN SHEET FAP 71 (IL 54)		F.A.P. RTE. 71	SECTION +	COUNTY LOGAN	TOTAL SHEETS 63	SHEET NO. 39
SCALE: 1" = 50'	SHEET	OF	SHEETS	STA.	TO STA.	

ILLINOIS	FED. AID PROJECT
----------	------------------

* (2) RS-3, BJR, (10) RS-4, N



X---X---X---X--- STA 9+61.22
 STA 10+30.40
 PIPE CULVERT REMOVAL



NOTE:
 1) CARE SHOULD BE TAKEN DURING REMOVAL OF THE EXISTING PIPE CULVERT SOUTH OF IL 54 AS TO MINIMIZE DAMAGE TO THE CULVERT. IF PIPE CULVERT SECTIONS ARE SALVAGABLE, THE CONTRACTOR SHALL CALL THE LOGAN COUNTY ENGINEER AT THE LOGAN COUNTY HIGHWAY DEPARTMENT AT 217-732-3059 LOCATED AT 529 S. MCLEAN ST LINCOLN, IL TO FACILITATE LOGAN COUNTY PICKING UP THE REMOVED CULVERT SECTIONS.

1 REV. 2-20-2020

MODEL: Default
 FILE: Model - 20190808.dwg
 USER: jackca
 PLOT DATE: 2/13/2020

USER NAME = JACKCA	DESIGNED -	REVISED -
	DRAWN -	REVISED -
PLOT SCALE = 40.0000' / in.	CHECKED -	REVISED -
PLOT DATE = 2/13/2020	DATE -	REVISED -

**STATE OF ILLINOIS
 DEPARTMENT OF TRANSPORTATION**

**INTERSECTION DETAIL
 CH 1 PLAN SHEET**

SCALE: SHEET OF SHEETS STA. TO STA.

F.A.P. RTE.	SECTION	COUNTY	TOTAL SHEETS	SHEET NO.
71	1	LOGAN	63	48
CONTRACT NO. 72H77				
ILLINOIS FED. AID PROJECT				

* (2) RS-3, BJR, (10) RS-4, N