

INDEX OF SHEETS

03-06-2020 LETTING ITEM 124

- COVER SHEET, STANDARDS, & SUMMARY OF QUANTITIES
- TYPICAL CROSS-SECTION & MISC. DETAILS
- INTERSECTION DETAILS AND STRUCTURE OMISSION DETAILS
- ENTRANCE DETAILS
- SCHEDULE OF RESURFACING QUANTITIES
- DETOUR TRAFFIC CONTROL LAYOUT

HIGHWAY STANDARDS

- 701301-04 LANE CLOSURE 2L, 2W SHORT TIME OPERATIONS
- 701306-04 LANE CLOSURE 2L, 2W SLOW MOVING OPERATIONS DAY ONLY ≥ 45MPH
- 701311-03 LANE CLOSURE 2L, 2W MOVING OPERATIONS DAY ONLY
- 701901-08 TRAFFIC CONTROL DEVICES
- 780001-05 TYPICAL PAVEMENT MARKINGS
- BLR 21-9 TYP. APP. OF TRAF. CTRL. DEVICES - RD. CLOSED TO ALL TRAFFIC
- BLR 22-7 TYP. APP. OF TRAF. CTRL. DEVICES - RD. CLOSED TO THRU TRAFFIC

STATE OF ILLINOIS
DEPARTMENT OF TRANSPORTATION
DIVISION OF HIGHWAYS

PLANS FOR PROPOSED
FEDERAL AID HIGHWAY
SURFACE TRANSPORTATION PROGRAM

F.A.S. ROUTE 343, CH 3, (CAMPUS RD)
SECTION 14-00199-03-RS
PROJECT RABV(560)
LIVINGSTON COUNTY
C93-016-20

ROUTE NO.	SECTION	COUNTY	TOTAL SHEETS	SHEET NO.
343	14-00199-03-RS	LIVINGSTON	6	1

PROJECT NO. RABV(560)



SUMMARY OF QUANTITIES		CONST. CODE 0005	
ITEM NO.	ITEM	UNIT	QUANTITIES
40600275	BITUMINOUS MATERIALS (PRIME COAT)	POUND	4,433.0
40600290	BITUMINOUS MATERIALS (TACK COAT)	POUND	17,133.0
40603080	HOT-MIX ASPHALT BINDER COURSE, IL-19.0, N50	TON	8,224.0
40604000	HOT-MIX ASPHALT SURFACE COURSE, IL-9.5FC, MIX "C", N50	TON	6,401.0
40800050	INCIDENTAL HOT-MIX ASPHALT SURFACING	TON	618.0
44000165	HOT-MIX ASPHALT SURFACE REMOVAL, 4"	SQ YD	488.0
48102100	AGGREGATE WEDGE SHOULDER, TYPE B	TON	5,191.0
67100100	MOBILIZATION	L SUM	1.0
70300100	SHORT TERM PAVEMENT MARKING	FOOT	5,210.0
70300150	SHORT TERM PAVEMENT MARKING REMOVAL	SQ FT	868.0
Δ 78001110	PAINT PAVEMENT MARKING - LINE 4"	FOOT	8,723.0
* X4400100	PORTLAND CEMENT CONCRETE SURFACE REMOVAL (VARIABLE DEPTH)	SQ YD	39.0
* X44001198	HOT-MIX ASPHALT SURFACE REMOVAL, VARIABLE DEPTH	SQ YD	2,600.0
* X7010216	TRAFFIC CONTROL AND PROTECTION, (SPECIAL)	L SUM	1.0
* Z0034105	MATERIAL TRANSFER DEVICE	TON	6,401.0
* Z0055300	RUMBLE STRIP	EACH	4.0
* LR355205	BITUMINOUS MATERIALS (PRIME COAT)	GALLON	6,085.0
Δ * LR400740	COLD IN-PLACE RECYCLING, 4.0"	SQ YD	60,852.0
Δ * LR400005	CIR-FDR EMULSIFIED ASPHALT	GALLON	82,703.0

* SEE SPECIAL PROVISIONS

Δ SPECIALTY ITEMS

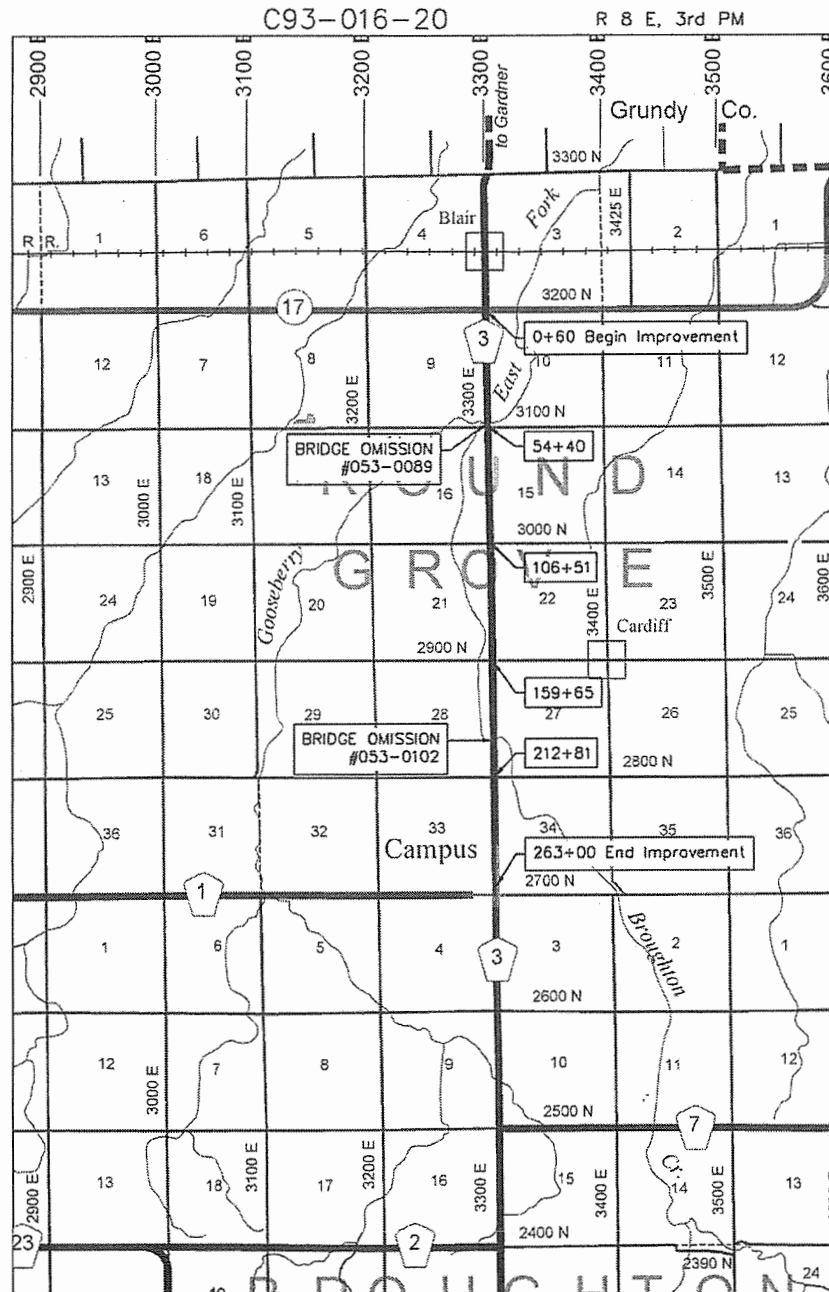
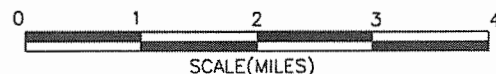
THIS PROJECT CONSISTS OF BITUMINOUS BASE STABILIZATION, CIR 4" DEPTH, A HMA BINDER COURSE, IL-19.0, HMA SURFACE COURSE, MIX "C", N50 AND AGGREGATE SHOULDERS BEGINNING AT A POINT NEAR THE INTERSECTION OF IL RT 17 (3200N) AND COUNTY HIGHWAY 3 (3300E) AND EXTENDING IN A SOUTHERLY DIRECTION TO A POINT NEAR THE INTERSECTION OF COUNTY HIGHWAY 3 AND COUNTY HIGHWAY 1 (2700N) IN CAMPUS, IL.

TRAFFIC DATA

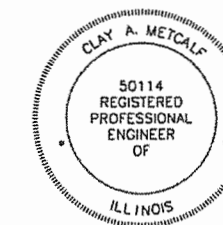
C.H. 3 - COLLECTOR
POSTED SPEED = 55 MPH-RURAL
DESIGN SPEED = 50 MPH-RURAL
DESIGN ADT= 1325/ YR 2028
CLASS III ROADS, 80,000#

UTILITIES

CONTACT J.U.I.E. 811 or
800-892-0123 BEFORE DIGGING



GROSS LENGTH = 26,240' = 4.97 MILES
NET LENGTH 26,054' = 4.93 MILES



THESE PLANS WERE MADE BY ME OR BY A MEMBER OF MY STAFF WORKING UNDER MY PERSONAL SUPERVISION.

12/20/19 DATE
Clay Metcalf COUNTY ENGINEER, P.E. (NO. 50114)
EXPIRATION DATE 11/30/2021

"THE ACCEPTANCE OF THIS PROJECT IS BASED ON THE MINIMUM DESIGN CRITERIA UNDER 3R GUIDELINES."

APPROVED 12/20 20 19

Clay Metcalf
LIVINGSTON COUNTY OFFICIAL

PASSED 1/3 20 19

Doc...
DISTRICT THREE LOCAL ROADS & STREETS ENGINEER

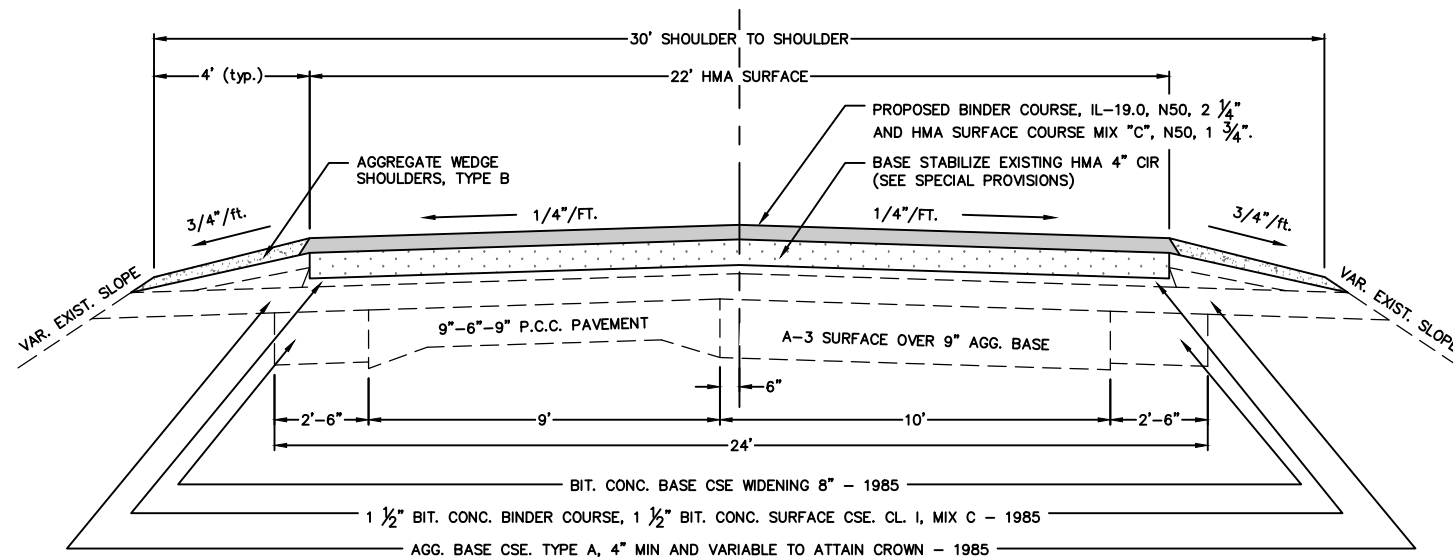
RELEASING FOR BID BASED ON LIMITED REVIEW 1/3 20 19

Region Two Engineer
STATE OF ILLINOIS
DEPARTMENT OF TRANSPORTATION

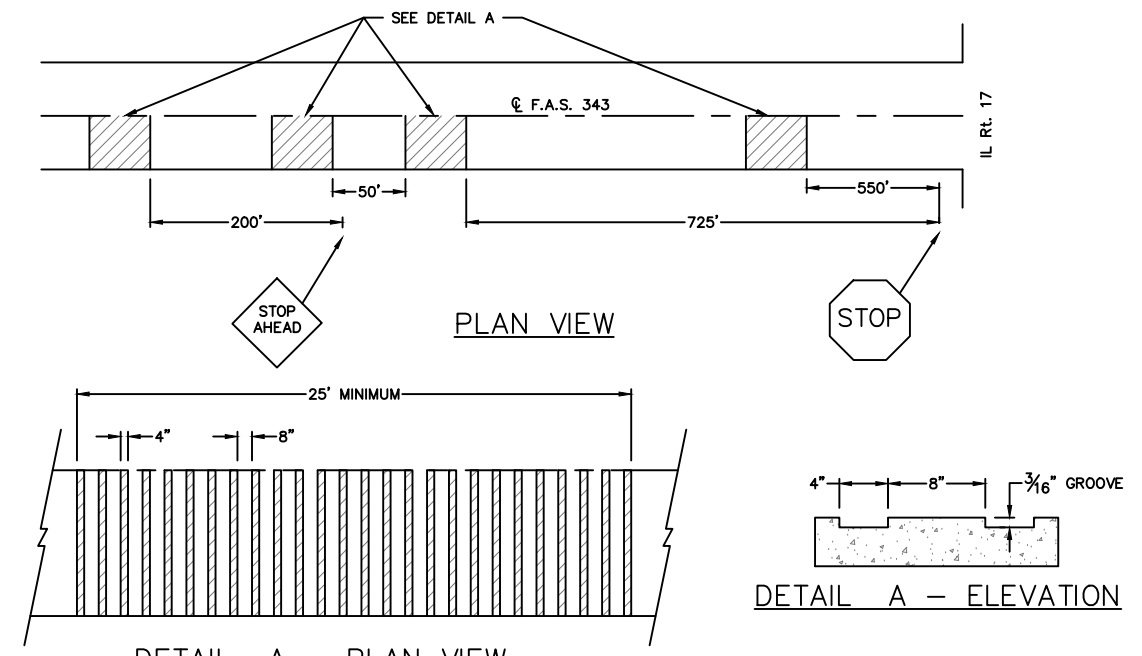
ROUTE NO.	SECTION	COUNTY	TOTAL SHEETS	SHEET NO.
343	14-00199-03-RS	LIVINGSTON	6	2

PROJECT NO. RA8V(560)

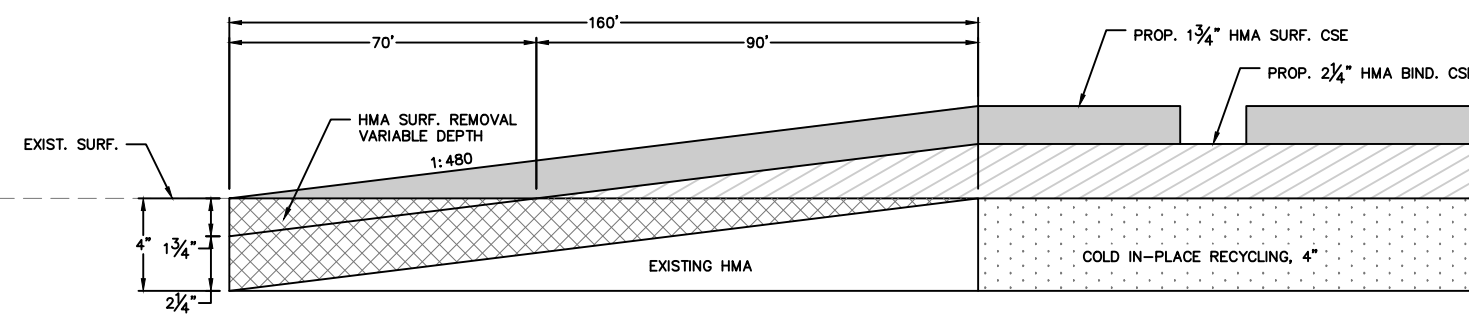
NOT PLOTTED TO SCALE



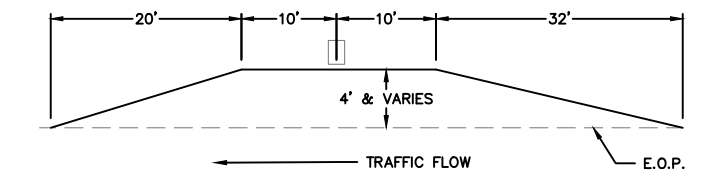
TYPICAL CROSS SECTION (NTS)
STA 0+60 TO STA. 263+00



DETAIL A - PLAN VIEW
GROOVED RUMBLE STRIP APPLICATION (NTS)
IN ADVANCE OF IL RT. 17 INTERSECTION



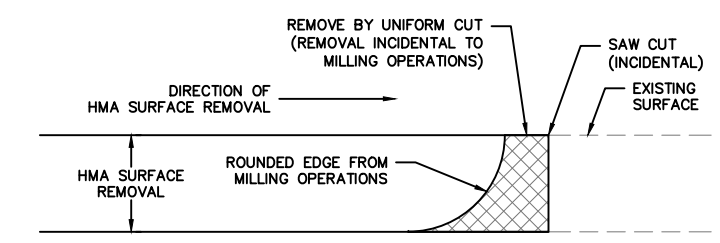
BEGINNING & END OF IMPROVEMENTS (NTS)
STA 0+60 & STA. 263+00



MAILBOX TURNOUT DETAIL (NTS)
PLACED DURING MAINLINE PAVING

	HMA Binder	HMA Surface	HMA Incidental
PG Grade	PG64-22		
Design Air Voids	4.0% @ N50	4.0% @ N50	4.0% @ N50
Mixture Composition	IL 19.0	IL 9.5	IL 9.5
Friction Aggregate	N/A	Mixture C	Mixture C
Density Test Method	Cores / Correlation	Cores / Correlation	Satisfaction of Engineer
Mixture Weight	112 # / s.y. / inch	112 # / s.y. / inch	112 # / s.y. / inch
Quality Management Program	QC/QA	QC/QA	QC/QA
Sublot Size	N/A	N/A	N/A
Location(s)	N/A	N/A	N/A

SCHEDULE OF PAINT PAVEMENT MARK 4"			
LOCATION	NO PASSING ZONE		SKIP DASH
STATION TO STATION	NBL	SBL	Q
0+60 to 212+02			5,290
212+02 to 216+33		431	110
216+33 to 223+89	756	756	*
223+89 to 227+89	400		100
227+89 to 263+00			880
TOTALS	1,156	1,187	6,380
TOTAL PAY QUANTITY 8,723			



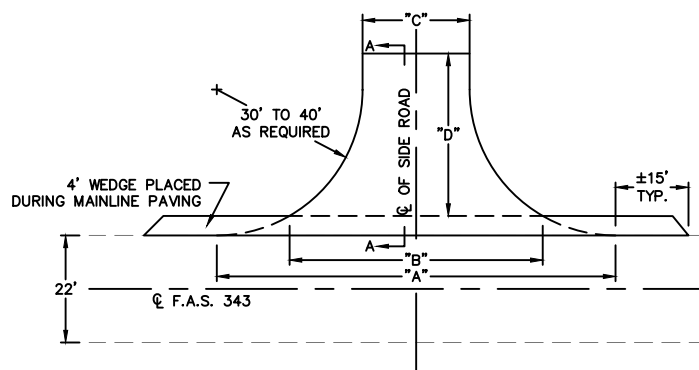
NOTE: WHEN MILLING OPERATIONS PRODUCE A ROUNDED EDGE, THEN A SAW CUT SHALL BE USED TO MANUFACTURE A PERPENDICULAR EDGE AS SHOWN IN THE DETAIL. THE ENGINEER SHALL BE THE SOLE JUDGE CONCERNING THE USE OF THIS DETAIL.

HMA DETAIL AT BUTT JOINTS

ROUTE NO.	SECTION	COUNTY	TOTAL SHEETS	SHEET NO.
343	14-00199-03-RS	LIVINGSTON	6	3

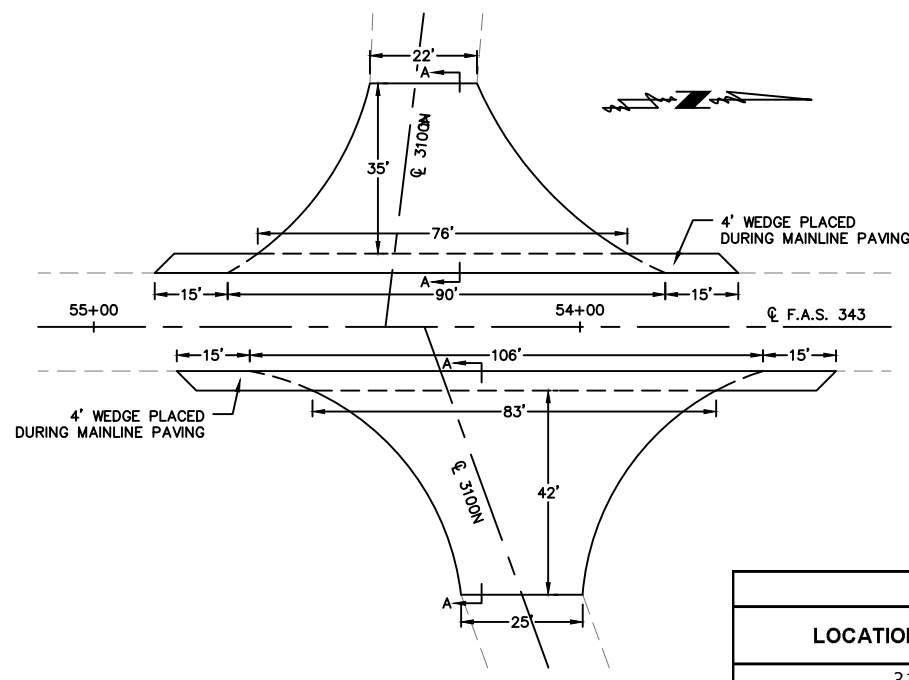
PROJECT NO. RA8V(560)

NOT PLOTTED TO SCALE

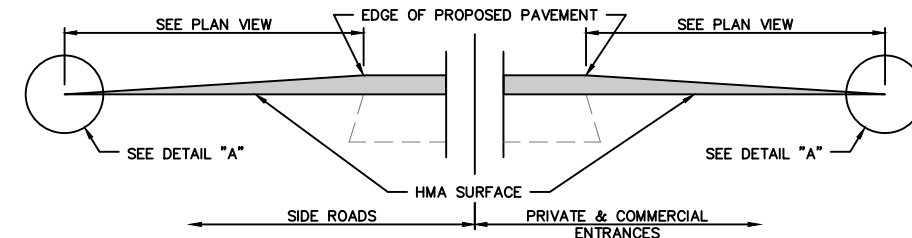


TYPICAL SIDE ROAD INTERSECTION (NTS)

STA. 106+51	LT. & RT.	(3000N)
STA. 159+65	LT. & RT.	(2900N)
STA. 212+81	LT. & RT.	(2800N)
STA. 252+82	RT.	(RICHLAND AVE)
STA. 256+18	RT.	(CENTER ST.)
STA. 259+73	RT.	(SHELDON AVE)

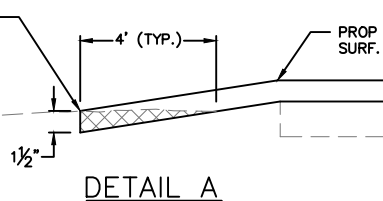


3100N RD (NTS)
STA. 54+40



SECTION A-A
DETAILS AT ENTRANCES & SIDE ROADS

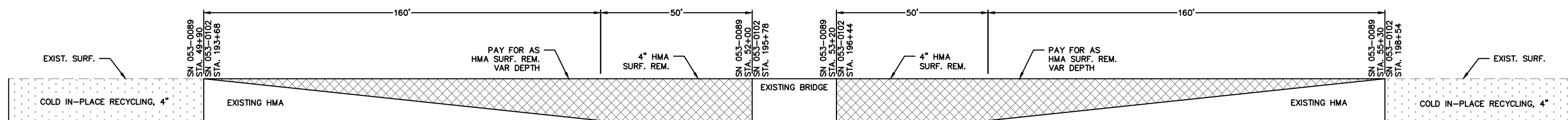
THE COST OF REMOVAL AT EXISTING HMA OR PCC LOCATIONS SHALL BE PAID FOR PER SQ YD BY THE APPROPRIATE PAY ITEM. REMOVAL AT THE EXISTING AGG LOCATIONS SHALL BE INCIDENTAL TO THE HMA. A-3 LOCATIONS SHALL BE FEATHER TAPERED.



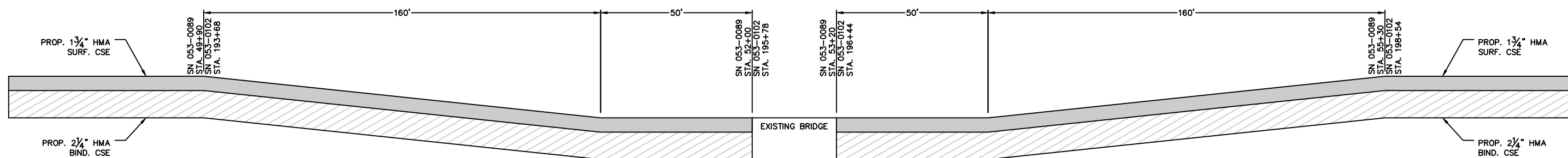
DETAIL A

CAMPUS RD / CH 3 - INTERSECTION QUANTITIES

LOCATION	A(Ft.)	B(Ft.)	C(Ft.)	D(Ft.)	HMA SURF REM VAR DEPTH (S.Y.)	BIT. MAT. (TACK COAT) (LB)	LEVEL BINDER	SURFACE COURSE	INCID. BIT.
3100N(R)	90	76	22	35	10	121	6	5	43
3100N(L)	106	83	25	42	11	153	7	6	56
3000N(R)	62	49	21	18	-	58	5	4	16
3000N(L)	50	38	17	18	-	48	4	3	12
2900N(R)	56	44	18	24	-	62	5	4	19
2900N(L)	75	63	22	24	-	81	6	4	25
2800N(R)	72	56	20	24	-	75	5	4	23
2800N(L)	67	57	43	18	-	73	5	4	22
Richland Ave	65	48	24	12	11	49	5	4	11
Center St	82	76	44	10	20	62	6	5	15
Sheldon Ave	61	53	16	10	7	43	5	4	9
TOTALS					59	825	38	30	194



STRUCTURE BUTT JOINT MILLING (NTS)



STRUCTURE BUTT JOINT RESURFACING (NTS)

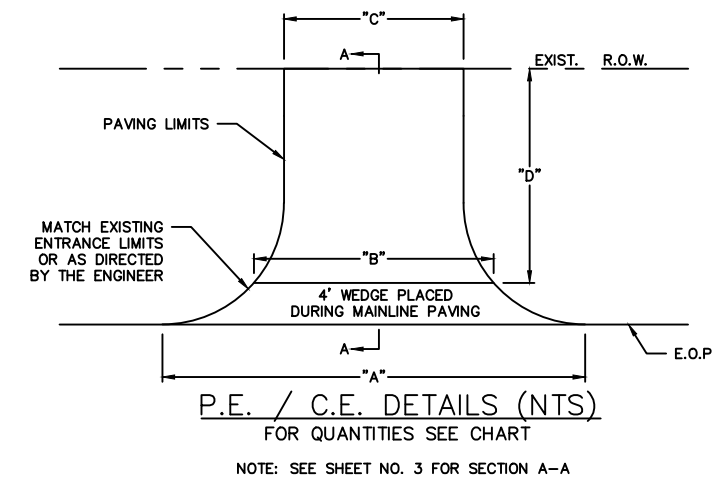
NOT PLOTTED TO SCALE

ROUTE NO.	SECTION	COUNTY	TOTAL SHEETS	SHEET NO.
343	14-00199-03-RS	LIVINGSTON	6	4

PROJECT NO. RA8V(560)

CAMPUS RD / CH 3 - ENTRANCE QUANTITIES												
TYPE	STATION	A(Ft.)	B(Ft.)	C(Ft.)	D(Ft.)	HMA SURF REM VAR DEPTH (S.Y.)	PCC SURF REM VAR DEPTH (S.Y.)	BIT. MAT. (TACK COAT) (LB)	BIT. MAT. (PRIME COAT) (LB)	LEVEL BINDER	SURFACE COURSE	INCID. BIT.
PE	20+66 (L)*	59	36	13	18	-	-	24	110	5	4	11
CE	40+84 (R)	80	71	54	18	-	-	8	357	5	4	28
CE	42+23 (R)	103	95	71	18	-	-	10	473	6	5	38
PE	46+15 (R)	23	18	8	18	-	-	2	79	2	1	6
PE	46+79 (R)	23	18	8	18	-	-	2	79	2	1	6
PE	47+38 (R)	23	18	8	18	-	-	2	79	2	1	6
PE	48+22 (R)	23	18	8	18	-	-	2	79	2	1	6
PE	49+44 (R)	23	18	8	18	-	-	2	79	2	1	6
PE	121+50 (L)	39	29	17	18	-	-	10	104	2	2	11
PE	141+10 (R)*	43	30	12	18	-	-	19	95	4	3	10
PE	190+20 (L)	56	39	13	18	-	-	14	117	3	3	12
PE	199+42 (R)*	57	36	13	18	-	-	25	110	5	4	11
CE	218+18 (L)	72	57	33	18	-	-	19	203	4	3	21
CE	223+41 (L)	70	56	32	18	-	-	19	198	4	3	20
PE	231+73 (R)	34	29	16	18	-	-	3	133	2	2	11
PE	233+95 (R)	49	41	30	18	-	-	5	205	3	2	16
CE	241+00 (R)	203	189	165	18	-	-	59	797	11	9	80
PE	245+26 (R)	34	23	17	11	-	-	9	55	2	2	6
PE	245+95 (R)	28	22	13	11	-	-	8	48	2	2	5
PE	246+61 (R)	47	38	23	11	-	-	13	84	3	2	9
PE	247+71 (L)	31	23	18	11	-	-	3	83	2	2	6
PE	248+29 (L)	39	28	22	11	10	-	24	-	2	2	7
PE	248+84 (R)	32	28	16	11	-	-	9	61	2	2	7
PE	249+77 (L)	28	20	20	8	-	9	15	-	2	2	4
PE	249+77 (R)	38	30	11	11	-	-	10	56	2	2	6
PE	250+70 (R)	47	35	28	11	-	-	12	87	3	2	9
PE	252+00 (L)	32	23	17	8	8	-	16	-	2	2	4
PE	252+00 (R)	41	34	28	12	12	-	30	-	3	2	10
PE	253+33 (L)	31	25	12	8	-	5	16	-	2	2	4
PE	255+93 (L)	37	28	12	11	-	-	10	55	2	2	6
PE	258+18 (L)	38	30	18	8	-	8	20	-	2	2	5
PE	258+58 (L)	35	23	19	8	-	8	17	-	2	2	5
PE	259+48 (L)	38	32	21	18	-	9	34	-	2	2	12
PE	261+59 (R)	50	43	36	10	-	-	14	99	3	3	10
CE	262+30 (R)	24	18	11	10	-	-	2	57	2	1	4
PE	262+70 (R)	34	27	14	10	-	-	9	51	2	2	6
MBTO	2 Total							28		6	5	
TOTALS						30	39	524	4,033	112	92	424

* DIMENSIONS ARE TO THE CL OF MAILBOX. QUANTITIES INCLUDE THE MBTO.



ROUTE NO.	SECTION	COUNTY	TOTAL SHEETS	SHEET NO.
343	14-00199-03-RS	LIVINGSTON	6	5

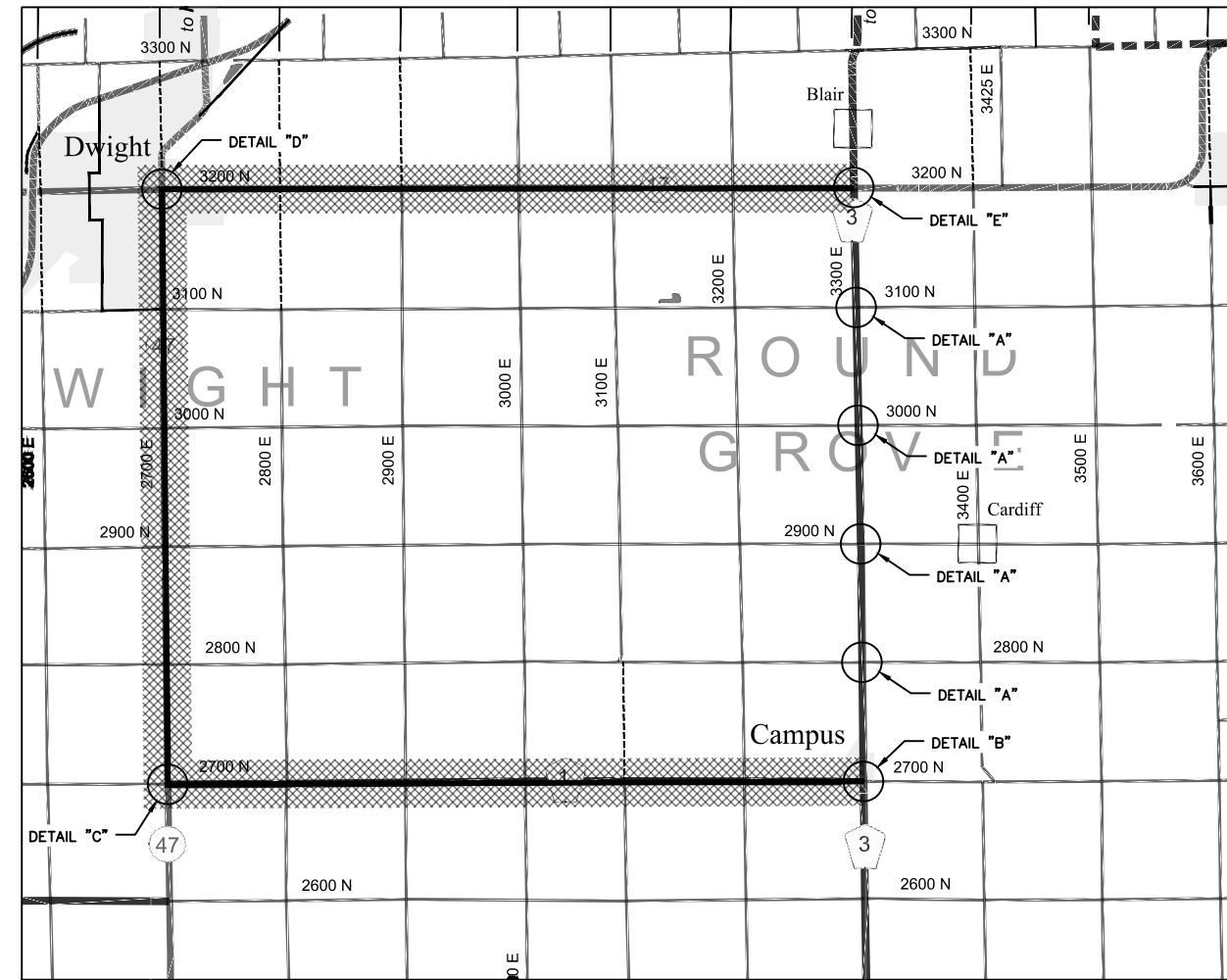
PROJECT NO. RA8V(560)

LOCATION (QUANTITY)	LENGTH	HMA SURF REMOVAL VAR DEPTH (SQ YD)	HMA SURF REMOVAL 4" (SQ YD)	COLD IN-PLACE RECYCLING 4" DEPTH (SQ YD)	SHORT-TERM PAVT MARKING (FOOT)	SHORT-TERM PAVT MARKING REMOVAL (SQ FT)	PAINT PVT MARKING LINE, 4" (FOOT)	BIT MATLS TACK CT (POUND)	BIT MATLS PR CT (POUND)	CIR-FDR EMULSIFIED ASPHALT (GALLON)	BIT MATLS PR CT (GALLON)	HMA BIND CSE, IL-19.0 N 50 (TON)	HMA SURF CSE "C" N50 (TON)	INCIDENTAL BIT SURF (TON)	AGG WEDGE SHOULDERS TYPE B (TON)
<i>MAINLINE</i>					<i>(2 Apps.)</i>	<i>(1 App.)</i>									
0+60. to 1+50. (TAPER)	90	385	-	-	18	3		260	-	-	-	49	38	-	18
1+50. to 2+20. (TAPER)	70	171	-	-	14	2		115	-	-	-	22	17	-	14
2+20. to 49+90.	4770	-	-	11660	954	159		2,624	-	15847	1166	1,469	1,143	-	966
49+90. to 51+50. (TAPER)	160	391	-	-	32	5		264	-	-	-	49	38	-	32
51+50. to 52+00.	50	-	122	-	10	2		82	-	-	-	15	12	-	-
STRUCTURE OMISSION (053-0089)	120	-	-	-	-	-		-	-	-	-	-	-	-	-
53+20. to 53+70.	50	-	122	-	10	2		82	-	-	-	15	12	-	-
53+70. to 55+30. (TAPER)	160	391	-	-	32	5		264	-	-	-	49	38	-	32
55+30. to 193+68.	13838	-	-	33826	2768	461		7,611	-	45973	3383	4,262	3,315	-	2802
193+68. to 195+28. (TAPER)	160	391	-	-	32	5		264	-	-	-	49	38	-	32
195+28. to 195+78.	50	-	122	-	10	2		82	-	-	-	15	12	-	-
STRUCTURE OMISSION (053-0102)	66	-	-	-	-	-		-	-	-	-	-	-	-	-
196+44. to 196+94.	50	-	122	-	10	2		82	-	-	-	15	12	-	-
196+94. to 198+54. (TAPER)	160	391	-	-	32	5		264	-	-	-	49	38	-	32
198+54. to 217+18.	1864	-	-	4556	372	62		1,025	-	6193	456	574	446	-	377
217+18. to 219+18. (EXTRA WIDTH)	200	-	-	489	40	7		130	200	664	49	73	57	-	20
219+18. to 222+41.	323	-	-	790	64	11		178	-	1073	79	100	77	-	65
222+41. to 224+41. (EXTRA WIDTH)	200	-	-	489	40	7		130	200	664	49	73	57	-	20
224+41. to 261+40.	3699	-	-	9042	740	123		2,034	-	12289	904	1,139	886	-	749
261+40. to 263+00. (TAPER)	160	391	-	-	32	5		264	-	-	-	49	38	-	32
TOTAL JOB LENGTH OR MAINLINE QUANTITY	26240	2511	488	60852	5210	868	0	15756	400	82703	6085	8068	6274	0	5191
<i>MISCELLANEOUS</i>															
PRIVATE & COMMERCIAL ENTRANCES (36)	-	30	-	-	-	-	-	524	4033	-	-	112	92	424	-
SIDEROAD INTERSECTIONS (11)	-	59	-	-	-	-	-	825	-	-	-	38	30	194	-
M.B.T.O.'s (2)	-	-	-	-	-	-	-	28	-	-	-	6	5	-	-
TOTALS OF MAINLINE & MISC.	26,240	2,600	488	60,852	5,210	868	0	17,133	4,433	82,703	6,085	8,224	6,401	618	5,191

SCHEDULE ON SHEET 2

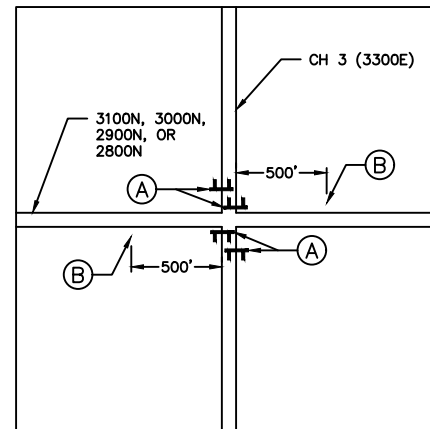
ROUTE NO.	SECTION	COUNTY	TOTAL SHEETS	SHEET NO.
343	14-00199-03-RS	LIVINGSTON	6	6

PROJECT NO. RA8V(560)

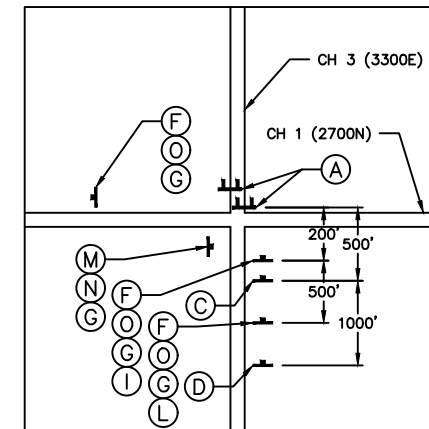


DETOUR MAP

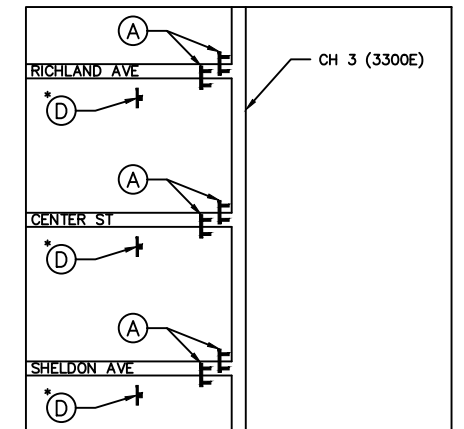
NOT PLOTTED TO SCALE



TYPICAL PROJECT INTERSECTION CH 3 (3300E)/CH 1 (2700N) INT. (DETAIL "A")

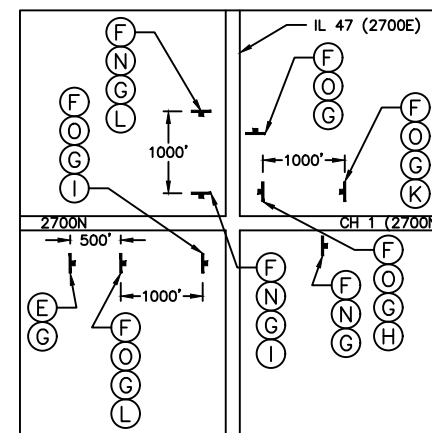


(DETAIL "B")

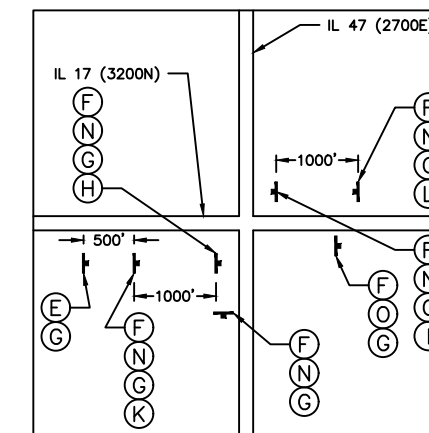


CAMPUS INTERSECTIONS (DETAIL "B1")

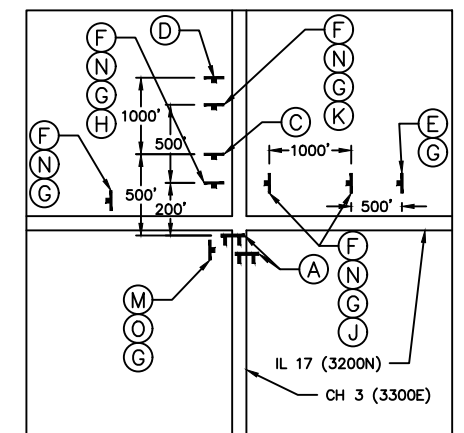
*SHALL BE SWITCHED OUT WITH W20-1103-4848 ONCE THE ROAD IS OPEN PER THE TRAFFIC CONTROL PLAN SPECIAL PROVISION



CH 1 (2700N)/IL 47 (2700E) INT. (DETAIL "C")



IL 47 (2700E)/IL 17 (3200N) INT. (DETAIL "D")



IL 17 (3200N)/CH 3 (3300E) INT. (DETAIL "E")

W20-1103-4848 AND APPLICABLE M5-1-2115 SIGNS SHALL BE PLACED ON IL 17 PER STANDARD 701306-04

NOTES

- 1.) ALL TRAFFIC CONTROL DEVICES SHALL BE FURNISHED, ERECTED AND MAINTAINED BY THE CONTRACTOR.
- 2.) ALL SIGNS NOT ATTACHED TO BARRICADES SHALL BE POST MOUNTED, UNLESS OTHERWISE NOTED.
- 3.) A POST MOUNTED "ROAD CLOSED 10 MILES AHEAD" SIGN SHALL BE PLACED AT THE INTERSECTION OF CH 3 (3300E) AND IL 116 (1700N).
- 4.) LOCATIONS OF TRAFFIC CONTROL DEVICES MAY BE ADJUSTED BY THE ENGINEER.
- 5.) TRAFFIC CONTROL SHALL BE IN ACCORDANCE WITH THE STANDARD SPECIFICATIONS FOR ROAD AND BRIDGE CONSTRUCTION, THE MANUAL FOR TRAFFIC CONTROL DEVICES, THE HIGHWAY STANDARDS AND SPECIAL PROVISIONS.

LEGEND

- DETOUR ROUTE
- TYPE III BARRICADES CONFORMING TO STD. 701901 WITH 2 FLASHING LIGHTS PER BARRICADE
- SIGNS ON PERMANENT SUPPORTS
- FLASHING LIGHT ABOVE SIGN
- 18"x18" ORANGE FLAG
- FLORESCENT ORANGE

ROAD CLOSED TO THRU TRAFFIC R11-4-6030 (A)	ROAD CONSTRUCTION AHEAD W20-1103-4848 (B)	ROAD CLOSED 500 FT W20-3-4848 (C)	ROAD CLOSED AHEAD W20-3-4848 (D)	DETOUR AHEAD W20-2-4848 (E)	DETOUR M4-8-2412 (F)	LIVINGSTON COUNTY 3 M1-5-1818 (G)	
→ FO M6-1-2115 (H)	← FO M6-1-2115 (I)	↑ FO M6-3-2115 (J)	↗ FO M5-1-2115 (K)	↖ FO M5-1-2115 (L)	END DETOUR M4-8A-2418 (M)	SOUTH M3-1-2412 (N)	NORTH M3-1-2412 (O)