

STATE OF ILLINOIS
DEPARTMENT OF TRANSPORTATION

| F.A.P. RTE | SECTION | COUNTY | TOTAL SHEETS | SHEET NO. |
|------------|--------------------|----------|--------------------|-----------|
| - | D7 PATCHING 2020-3 | MACON | 6 | 1 |
| | | ILLINOIS | CONTRACT NO. 74931 | |

* FAP ROUTES 323 & 322A

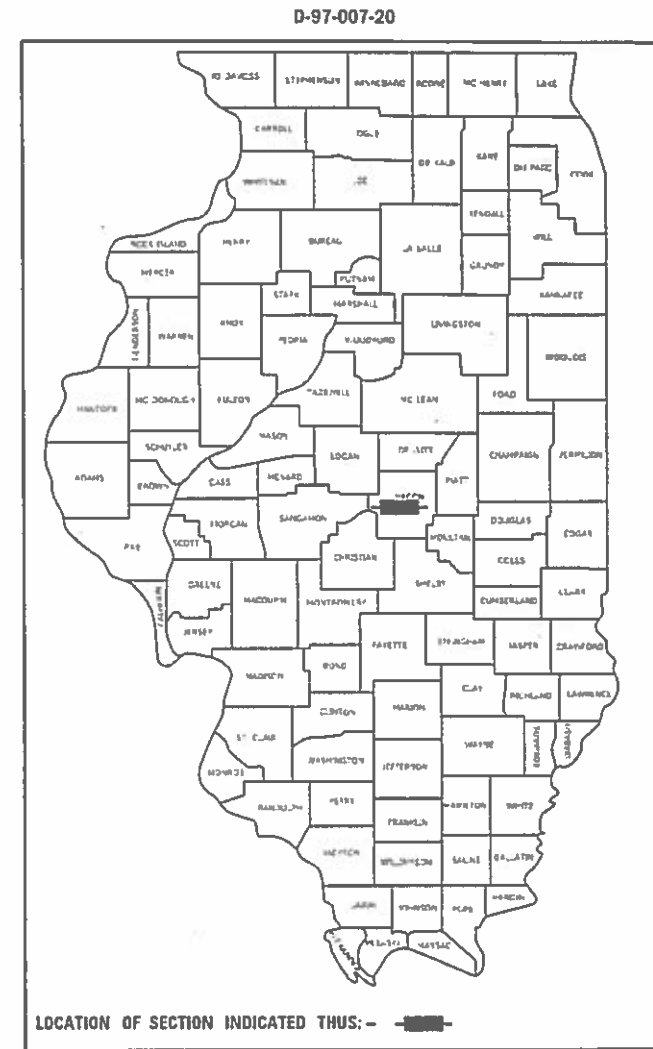
FOR INDEX OF SHEETS, SEE SHEET NO. 2

US 36 ADT = 9500 (2017)

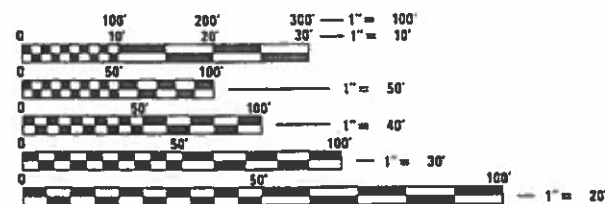
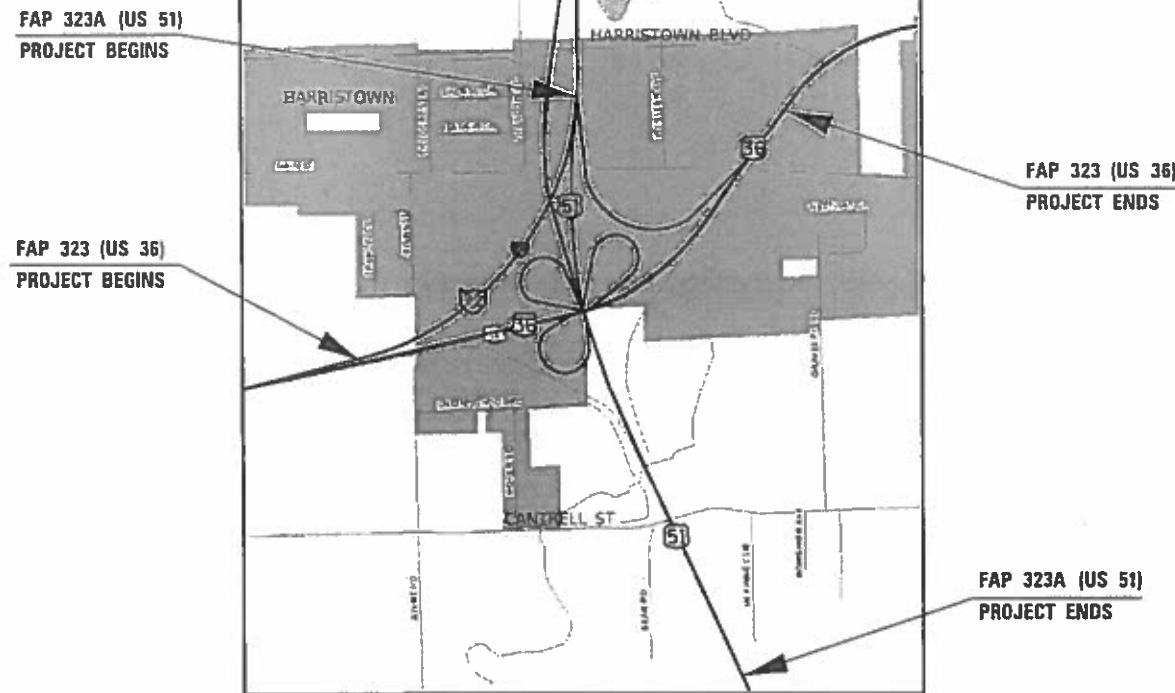
US 51 ADT = 5250 (2017)

PROPOSED HIGHWAY PLANS

FAP ROUTES 323 & 322A (US 36 & US 51)
SECTION D7 PATCHING 2020-3
PATCHING
MACON COUNTY



C-97-007-20



FULL SIZE PLANS HAVE BEEN PREPARED USING STANDARD ENGINEERING SCALES. REDUCED SIZED PLANS WILL NOT CONFORM TO STANDARD SCALES. IN MAKING MEASUREMENTS ON REDUCED PLANS, THE ABOVE SCALES MAY BE USED.

J.U.L.I.E.
JOINT UTILITY LOCATION INFORMATION FOR EXCAVATORS
1-800-892-0123
OR 811

PROJECT ENGINEER: DEBRA BARRETT
PROJECT MANAGER: MATT BOWER
PHONE: (217) 342-8359
CONTRACT NO. 74931

GROSS LENGTH = 31,363.2 FT. = 5.94 MILES
NET LENGTH = 31,363.2 FT. = 5.94 MILES

STATE OF ILLINOIS
DEPARTMENT OF TRANSPORTATION

SUBMITTED NOVEMBER 12, 20

Jeffrey P. Myers, Jr. REGIONAL ENGINEER

Jan 31, 2020
Scott A. Eck ENGINEER OF DESIGN AND ENVIRONMENT

Jan 31, 2020
Jeffrey P. Myers, Jr. DIRECTOR OF HIGHWAYS PROJECT IMPLEMENTATION

PRINTED BY THE AUTHORITY
OF THE STATE OF ILLINOIS

INDEX OF SHEETS

| SHEET NO. | ITEM |
|-----------|-----------------------------------|
| 1 | COVER SHEET |
| 2 | INDEX OF SHEETS AND GENERAL NOTES |
| 3 | SUMMARY OF QUANTITIES |
| 4-6 | SCHEDULE OF QUANTITIES |

THE FOLLOWING STANDARDS ARE A PART OF THESE PLANS AND ARE INCLUDED AFTER SHEET NO. 6 :

| STANDARD NO. | DESCRIPTION |
|--------------|--|
| 000001-07 | STANDARD SYMBOLS, ABBREVIATIONS AND PATTERNS |
| 001001-02 | AREAS OF REINFORCEMENT BARS |
| 001006 | DECIMAL OF AN INCH AND OF A FOOT |
| 420001-09 | PAVEMENT JOINTS |
| 421001-03 | BAR REINFORCEMENT FOR CRC PAVEMENT |
| 420701-03 | PAVEMENT WELDED WIRE REINFORCEMENT |
| 442001-04 | CLASS A PATCHES |
| 701101-05 | OFF-ROAD OPERATIONS, MULTILANE, 15' TO 24" FROM PAVEMENT EDGE |
| 701106-02 | OFF-ROAD OPERATIONS, MULTILANE, MORE THAN 15' AWAY |
| 701400-09 | APPROACH TO LANE CLOSURE, FREEWAY/EXPRESSWAY |
| 701401-12 | LANE CLOSURE, FREEWAY/EXPRESSWAY |
| 701406-12 | LANE CLOSURE, FREEWAY/EXPRESSWAY, DAY OPERATIONS ONLY |
| 701411-09 | LANE CLOSURE, MULTILANE, AT ENTRANCE OR EXIT RAMP, FOR SPEEDS > 45 MPH |
| 701421-08 | LANE CLOSURE, MULTILANE, DAY OPERATIONS ONLY, FOR SPEEDS > 45 MPH TO 55 MPH |
| 701422-10 | LANE CLOSURE, MULTILANE, FOR SPEEDS > 45 MPH TO 55 MPH |
| 701426-09 | LANE CLOSURE, MULTILANE, INTERMITTENT OR MOVING OPERATION, FOR SPEEDS > 45 MPH |
| 701456-05 | PARTIAL EXIT RAMP CLOSURE FREEWAY/EXPRESSWAY |
| 701901-08 | TRAFFIC CONTROL DEVICES |

GENERAL NOTES

THIS PROJECT IS LOCATED ON US 36, FROM INTERSTATE 72 TO 0.2 MILE WEST OF HARRISTOWN BOULEVARD (INCLUDING RAMPS), AND ON US 51, FROM INTERSTATE 72 TO 0.3 MILE SOUTH OF CANTRELL ROAD (INCLUDING RAMPS), WEST OF DECATUR.

THE WORK INCLUDED IN SECTION D7 PATCHING 2020-3 CONSISTS OF CLASS A PATCHING, TRAFFIC CONTROL, AND ANY OTHER WORK NECESSARY TO COMPLETE THIS PROJECT.

MODEL: Default
 FILE: \\nas101.pw.state.il.us\pub\p1anroom\dat\illinois.gov\PW\DOT\Documents\IDOT_Offices\IDOT\74931\CADD\DATA\CAD\Drawings\ID74931-std-gen-note.dgn

* FAP ROUTES 323 & 322A

| | | | | | | | | | | |
|-------------------------------|------------|-----------|---|--|--|---------------------------|--------------------|--------|--------------|-----------|
| USER NAME = steffemk | DESIGNED - | REVISED - | STATE OF ILLINOIS DEPARTMENT OF TRANSPORTATION | INDEX OF SHEETS, LIST OF STANDARDS, AND GENERAL NOTES | | F.A.P. RTE. | SECTION | COUNTY | TOTAL SHEETS | SHEET NO. |
| PLOT SCALE = 100.0000 ' / in. | CHECKED - | REVISED - | | | | * | D7 PATCHING 2020-3 | MACON | 6 | 2 |
| PLOT DATE = 11/12/2019 | DATE - | REVISED - | | SCALE: SHEET OF SHEETS STA. TO STA. | | CONTRACT NO. 74931 | | | | |
| | | | | | | ILLINOIS FED. AID PROJECT | | | | |

100%
STATE

| SUMMARY OF QUANTITIES | | | TOTAL QUANTITIES | CONSTRUCTION TYPE CODE | | |
|-----------------------|--|-------|------------------|------------------------|------------|--|
| CODE NO | ITEM | UNIT | | 0006 US 36 | 0006 US 51 | |
| 44200541 | CLASS A PATCHES, TYPE II, 9 INCH | SO YD | 629 | 236 | 393 | |
| 44200545 | CLASS A PATCHES, TYPE III, 9 INCH | SO YD | 212 | 75 | 137 | |
| 44200547 | CLASS A PATCHES, TYPE IV, 9 INCH | SO YD | 2145 | 747 | 1398 | |
| 44213000 | PATCHING REINFORCEMENT | SO YD | 2986 | 1058 | 1928 | |
| 44213200 | SAW CUTS | FOOT | 9898 | 3656 | 6242 | |
| 44213204 | TIE BARS 3/4" | EACH | 938 | 401 | 537 | |
| 67100100 | MOBILIZATION | L SUM | 1 | 0.5 | 0.5 | |
| 70100310 | TRAFFIC CONTROL AND PROTECTION, STANDARD 701421 | L SUM | 1 | 0.5 | 0.5 | |
| 70100320 | TRAFFIC CONTROL AND PROTECTION, STANDARD 701422 | L SUM | 1 | 0.5 | 0.5 | |
| 70100420 | TRAFFIC CONTROL AND PROTECTION, STANDARD 701411 | EACH | 6 | 3 | 3 | |
| 70100700 | TRAFFIC CONTROL AND PROTECTION, STANDARD 701406 | L SUM | 1 | 0.5 | 0.5 | |
| 70100800 | TRAFFIC CONTROL AND PROTECTION, STANDARD 701401 | L SUM | 1 | 0.5 | 0.5 | |

100%
STATE

| SUMMARY OF QUANTITIES | | | TOTAL QUANTITIES | CONSTRUCTION TYPE CODE | | |
|-----------------------|--|--------|------------------|------------------------|------------|--|
| CODE NO | ITEM | UNIT | | 0006 US 36 | 0006 US 51 | |
| 70100825 | TRAFFIC CONTROL AND PROTECTION, STANDARD 701456 | L SUM | 1 | 0.5 | 0.5 | |
| 70103815 | TRAFFIC CONTROL SURVEILLANCE | CAL DA | 30 | 15 | 15 | |
| 70107025 | CHANGEABLE MESSAGE SIGN | CAL DA | 56 | 28 | 28 | |

MODEL: Default
FILE: Model: P:\pub\baronm.dwg
C:\Users\baronm\AppData\Local\Temp\AutoCAD\AutoCAD\Projects\74931\CAD\Drawings\CAD\Drawings\74931-1-18-2019.dwg

* FAP ROUTES 323 & 322A

| | | |
|------------------------------|------------|-----------|
| USER NAME = steffenmk | DESIGNED - | REVISED - |
| | DRAWN - | REVISED - |
| PLOT SCALE = 100.0000' / in. | CHECKED - | REVISED - |
| PLOT DATE = 11/12/2019 | DATE - | REVISED - |

**STATE OF ILLINOIS
DEPARTMENT OF TRANSPORTATION**

SUMMARY OF QUANTITIES

SCALE: SHEET OF SHEETS STA. TO STA.

| F.A.P. RTE. | SECTION | COUNTY | TOTAL SHEETS | SHEET NO. |
|-------------|--------------------|----------|--------------------|-----------|
| * | D7 PATCHING 2020-3 | MACON | 6 | 3 |
| | | | CONTRACT NO. 74931 | |
| | | ILLINOIS | FED. AID PROJECT | |

MODEL: Default
 FILE: Model: PatchingSchedules.DOT
 OFFICE: D:\Projects\74931\CADData\CAD\Drawings\DOT\Office\Drawings\74931-SubSchedules.dgn

| PATCH NUMBER | LANE | STATION | LENGTH (FEET) | WIDTH (FEET) | PLAN DEPTH (INCHES) | CLASS A TYPE 2, 9" (SQ YD) | CLASS A TYPE 3, 9" (SQ YD) | CLASS A TYPE 4, 9" (SQ YD) | PATCHING REINF (SQ YD) | SAW CUTS (FEET) | TIE BARS 3/4" (EACH) |
|----------------------------------|--------|---|---------------|--------------|---------------------|----------------------------|----------------------------|----------------------------|------------------------|-----------------|----------------------|
| EB US 36 | | USE HMA/PCC JOINT ON WEST SIDE OF JOB LIMITS AS STATION 0+00 | | | | | | | | | |
| 1 | EBDL | 2+05 | 80.0 | 6.0 | 9.0 | | | 53.3 | 53.3 | 184 | 39 |
| 2 | EBDL | 26+60 | 6.0 | 12.0 | 9.0 | 8.0 | | | 8.0 | 60 | |
| 3 | EBPL | 26+60 | 6.0 | 12.0 | 9.0 | 8.0 | | | 8.0 | 60 | |
| 4 | EBDL | 32+85 | 10.0 | 12.0 | 9.0 | 13.3 | | | 13.3 | 68 | |
| 5 | EBDL | 36+00 | 150.0 | 14.0 | 9.0 | | | 233.3 | 233.3 | 356 | 74 |
| 6 | EBDLCL | 37+85 | 40.0 | 6.0 | 9.0 | | | 26.7 | 26.7 | 104 | 19 |
| 7 | EBDLCL | 39+30 | 10.0 | 6.0 | 9.0 | 6.7 | | | 6.7 | 44 | |
| 8 | EBDL | 41+60 | 20.0 | 12.0 | 9.0 | | | 26.7 | 26.7 | 88 | 9 |
| 9 | EBDLCL | 41+80 | 120.0 | 6.0 | 9.0 | | | 80.0 | 80.0 | 264 | 59 |
| 10 | EBDL | 44+50 | 40.0 | 12.0 | 9.0 | | | 53.3 | 53.3 | 128 | 19 |
| 11 | EBPLEL | 44+65 | 12.0 | 6.0 | 9.0 | 8.0 | | | 8.0 | 48 | |
| EB US 36 TO SB US 51 RAMP | | USE OVERHEAD SIGN STRUCTURE AT START OF RAMP AS STATION 0+00 | | | | | | | | | |
| 12 | RAMP | 2+62 | 60.0 | 8.0 | 9.0 | | | 53.3 | 53.3 | 152 | 29 |
| 13 | RAMP | 2+62 | 60.0 | 8.0 | 9.0 | | | 53.3 | 53.3 | 152 | 29 |
| 14 | RAMP | 8+21 | 6.0 | 8.0 | 9.0 | 5.3 | | | 5.3 | 44 | |
| 15 | RAMP | 8+21 | 6.0 | 8.0 | 9.0 | 5.3 | | | 5.3 | 44 | |
| 16 | RAMP | 17+40 | 30.0 | 7.0 | 9.0 | | 23.3 | | 23.3 | 88 | 14 |
| WB US 36 | | USE HMA/PCC JOINT ON EAST SIDE OF JOB LIMITS AS STATION 0+00 | | | | | | | | | |
| 17 | WBDL | -0+15 | 6.0 | 12.0 | 9.0 | 8.0 | | | 8.0 | 60 | |
| 18 | WBDL | 0+00 | 6.0 | 12.0 | 9.0 | 8.0 | | | 8.0 | 60 | |
| 19 | WBDLEL | 0+10 | 50.0 | 6.0 | 9.0 | | | 33.3 | 33.3 | 124 | 24 |
| 20 | WBDL | 0+55 | 45.0 | 12.0 | 9.0 | | | 60.0 | 60.0 | 138 | 22 |
| 21 | WBPLCL | 10+30 | 60.0 | 6.0 | 9.0 | | | 40.0 | 40.0 | 144 | 29 |
| 22 | WBPL | 11+60 | 10.0 | 12.0 | | 13.3 | | | 13.3 | 68 | |
| 23 | WBPL | 16+15 | 4.0 | 12.0 | 9.0 | 5.3 | | | 5.3 | 56 | |
| 24 | WBDL | 19+25 | 10.0 | 12.0 | 9.0 | 13.3 | | | 13.3 | 68 | |
| 25 | WBDL | 21+05 | 12.0 | 12.0 | 9.0 | | 16.0 | | 16.0 | 72 | |
| 26 | WBPL | 21+05 | 12.0 | 12.0 | 9.0 | | 16.0 | | 16.0 | 72 | |
| 27 | WBDL | 23+15 | 4.0 | 12.0 | 9.0 | 5.3 | | | 5.3 | 56 | |
| 28 | WBDLEL | 36+35 | 30.0 | 6.0 | 9.0 | | 20.0 | | 20.0 | 84 | 14 |
| 29 | WBPLEL | 37+55 | 12.0 | 6.0 | 9.0 | 8.0 | | | 8.0 | 48 | |
| 30 | WBPLEL | 44+45 | 20.0 | 6.0 | 9.0 | 13.3 | | | 13.3 | 64 | 9 |
| 31 | WBDL | 48+20 | 25.0 | 12.0 | 9.0 | | | 33.3 | 33.3 | 98 | 12 |
| 32 | WBPL | 48+20 | 10.0 | 12.0 | 9.0 | 13.3 | | | 13.3 | 68 | |
| WB US 36 TO SB 51 RAMP | | USE OVERHEAD SIGN STRUCTURE AT START OF RAMP AS STATION 0+00 | | | | | | | | | |
| 33 | RAMP | 2+65 | 6.0 | 8.0 | 9.0 | 5.3 | | | 5.3 | | |
| 34 | RAMP | 2+65 | 6.0 | 8.0 | 9.0 | 5.3 | | | 5.3 | | |
| 35 | RAMP | 7+45 | 6.0 | 8.0 | 9.0 | 5.3 | | | 5.3 | | |
| 36 | RAMP | 7+45 | 6.0 | 8.0 | 9.0 | 5.3 | | | 5.3 | | |
| 37 | RAMP | 11+50 | 6.0 | 8.0 | 9.0 | 5.3 | | | 5.3 | | |
| 38 | RAMP | 11+50 | 6.0 | 8.0 | 9.0 | 5.3 | | | 5.3 | | |
| WB US 36 TO EB I-72 RAMP | | USE OVERHEAD SIGN STRUCTURE AT START OF RAMP AS STATION 0+00 | | | | | | | | | |
| 39 | RAMP | 2+65 | 6.0 | 8.0 | 9.0 | 5.3 | | | 5.3 | 44 | |
| 40 | RAMP | 2+65 | 6.0 | 8.0 | 9.0 | 5.3 | | | 5.3 | 44 | |
| 41 | RAMP | 6+67 | 6.0 | 8.0 | 9.0 | 5.3 | | | 5.3 | 44 | |
| 42 | RAMP | 6+67 | 6.0 | 8.0 | 9.0 | 5.3 | | | 5.3 | 44 | |
| 43 | RAMP | 15+80 | 6.0 | 8.0 | 9.0 | 5.3 | | | 5.3 | 44 | |
| 44 | RAMP | 15+80 | 6.0 | 8.0 | 9.0 | 5.3 | | | 5.3 | 44 | |
| 45 | RAMP | 24+20 | 10.0 | 8.0 | 9.0 | 8.9 | | | 8.9 | 52 | |
| 46 | RAMP | 26+10 | 6.0 | 8.0 | 9.0 | 5.3 | | | 5.3 | 44 | |
| 47 | RAMP | 26+10 | 6.0 | 8.0 | 9.0 | 5.3 | | | 5.3 | 44 | |
| 48 | RAMP | 28+05 | 6.0 | 8.0 | 9.0 | 5.3 | | | 5.3 | 44 | |
| 49 | RAMP | 28+05 | 6.0 | 8.0 | 9.0 | 5.3 | | | 5.3 | 44 | |
| US 36 TOTALS = | | | | | | 236.1 | 75.3 | 746.5 | 1057.9 | 3656.0 | 401.0 |

* FAP ROUTES 323 & 322A

| | | |
|------------------------------|------------|-----------|
| USER NAME = steffemk | DESIGNED - | REVISED - |
| | DRAWN - | REVISED - |
| PLOT SCALE = 100.0000' / in. | CHECKED - | REVISED - |
| PLOT DATE = 11/12/2019 | DATE - | REVISED - |

**STATE OF ILLINOIS
 DEPARTMENT OF TRANSPORTATION**

PATCHING SCHEDULES

SCALE: SHEET OF SHEETS STA. TO STA.

| F.A.P. RTE. | SECTION | COUNTY | TOTAL SHEETS | SHEET NO. |
|--------------------|--------------------|----------|------------------|-----------|
| * | D7 PATCHING 2020-3 | MACON | 6 | 4 |
| CONTRACT NO. 74931 | | | | |
| | | ILLINOIS | FED. AID PROJECT | |

MODEL: Default
 FILE: h:\hpc_p\pub\hpc\rooms\dat\illinois\pwr\WIDOT\Documents\DOT_Offices\Illinet_7\Projects\74931\CADD\DATA\CAD\ Sheets\74931-1-shc-schedule.dgn

| PATCH NUMBER | LANE | STATION | LENGTH (FEET) | WIDTH (FEET) | PLAN DEPTH (INCHES) | CLASS A TYPE 2, 9" (SQ YD) | CLASS A TYPE 3, 9" (SQ YD) | CLASS A TYPE 4, 9" (SQ YD) | PATCHING REINF (SQ YD) | SAW CUTS (FEET) | TIE BARS 3/4" (EACH) |
|--------------|--------|---|---------------|--------------|---------------------|----------------------------|----------------------------|----------------------------|------------------------|-----------------|----------------------|
| NB US 51 | | USE HMA/PCC JOINT ON SOUTH SIDE OF JOB LIMITS AS STATION 0+00 | | | | | | | | | |
| 50 | NBDL | 1+90 | 6.0 | 12.0 | 9.0 | 8.0 | | | 8.0 | 60 | |
| 51 | NBDL | 12+45 | 6.0 | 12.0 | 9.0 | 8.0 | | | 8.0 | 60 | |
| 52 | NBDL | 16+25 | 10.0 | 12.0 | 9.0 | 13.3 | | | 13.3 | 68 | |
| 53 | NBPL | 16+25 | 10.0 | 12.0 | 9.0 | 13.3 | | | 13.3 | 68 | |
| 54 | NBDL | 24+55 | 6.0 | 12.0 | 9.0 | 8.0 | | | 8.0 | 60 | |
| 55 | NBDL | 31+75 | 30.0 | 12.0 | 9.0 | | | 40.0 | 40.0 | 108 | 14 |
| 56 | NBPL | 33+40 | 6.0 | 12.0 | 9.0 | 8.0 | | | 8.0 | 60 | |
| 57 | NBDL | 33+45 | 6.0 | 12.0 | 9.0 | 8.0 | | | 8.0 | 60 | |
| 58 | NBPL | 33+70 | 15.0 | 12.0 | 9.0 | | 20.0 | | 20.0 | 78 | |
| 59 | NBDL | 34+95 | 6.0 | 12.0 | 9.0 | 8.0 | | | 8.0 | 60 | |
| 60 | NBDL | 37+23 | 20.0 | 12.0 | 9.0 | | | 26.7 | 26.7 | 88 | 9 |
| 61 | NBDL | 37+75 | 6.0 | 12.0 | 9.0 | 8.0 | | | 8.0 | 60 | |
| 62 | NBPL | 39+65 | 80.0 | 12.0 | 9.0 | | | 106.7 | 106.7 | 208 | 39 |
| 63 | NBDL | 46+10 | 30.0 | 6.0 | 9.0 | | 20.0 | | 20.0 | 84 | 14 |
| 64 | NBDL | 46+45 | 12.0 | 12.0 | 9.0 | | 16.0 | | 16.0 | 72 | |
| 65 | NBDL | 50+00 | 20.0 | 12.0 | 9.0 | | | 26.7 | 26.7 | 88 | 9 |
| 66 | NBDL | 57+85 | 40.0 | 12.0 | 9.0 | | | 53.3 | 53.3 | 128 | 19 |
| 67 | NBDLCL | 58+40 | 10.0 | 6.0 | 9.0 | 6.7 | | | 6.7 | 44 | |
| 68 | NBDL | 60+50 | 140.0 | 12.0 | 9.0 | | | 186.7 | 186.7 | 328 | 69 |
| 69 | NBDL | 63+40 | 6.0 | 12.0 | 9.0 | 8.0 | | | 8.0 | 60 | |
| 70 | NBPL | 63+90 | 40.0 | 12.0 | 9.0 | | | 53.3 | 53.3 | 128 | 19 |
| 71 | NBDL | 64+65 | 80.0 | 14.0 | 9.0 | | | 124.4 | 124.4 | 216 | 39 |
| 72 | NBPL | 64+75 | 10.0 | 12.0 | 9.0 | 13.3 | | | 13.3 | 68 | |
| 73 | NBDL | 65+90 | 6.0 | 12.0 | 9.0 | 8.0 | | | 8.0 | 60 | |
| 74 | NBPL | 66+00 | 100.0 | 12.0 | 9.0 | | | 133.3 | 133.3 | 248 | 49 |
| SB US 51 | | USE HMA/PCC JOINT ON NORTH SIDE OF JOB LIMITS AS STATION 0+00 | | | | | | | | | |
| 75 | SBDL | 0+25 | 6.0 | 12.0 | 9.0 | 8.0 | | | 8.0 | 60 | |
| 76 | SBDL | 0+45 | 20.0 | 12.0 | 9.0 | | | 26.7 | 26.7 | 88 | 9 |
| 77 | SBPL | 0+65 | 75.0 | 12.0 | 9.0 | | | 100.0 | 100.0 | 198 | 37 |
| 78 | SBDL | 1+10 | 20.0 | 12.0 | 9.0 | | | 26.7 | 26.7 | 88 | 9 |
| 79 | SBPL | 2+50 | 6.0 | 12.0 | 9.0 | 8.0 | | | 8.0 | 60 | |
| 80 | SBDL | 3+40 | 6.0 | 12.0 | 9.0 | 8.0 | | | 8.0 | 60 | |
| 81 | SBPL | 6+00 | 70.0 | 12.0 | 9.0 | | | 93.3 | 93.3 | 188 | 34 |
| 82 | SBDL | 9+20 | 6.0 | 12.0 | 9.0 | 8.0 | | | 8.0 | 60 | |
| 83 | SBDL | 11+20 | 6.0 | 12.0 | 9.0 | 8.0 | | | 8.0 | 60 | |
| 84 | SBDL | 14+40 | 25.0 | 12.0 | 9.0 | | | 33.3 | 33.3 | 98 | 12 |
| 85 | SBDL | 15+00 | 15.0 | 12.0 | 9.0 | | 20.0 | | 20.0 | 78 | |
| 86 | SBPL | 15+10 | 10.0 | 12.0 | 9.0 | 13.3 | | | 13.3 | 68 | |
| 87 | SBPL | 19+30 | 10.0 | 12.0 | 9.0 | 13.3 | | | 13.3 | 68 | |
| 88 | SBDL | 19+30 | 10.0 | 12.0 | 9.0 | 13.3 | | | 13.3 | 68 | |
| 89 | SBDL | 24+30 | 6.0 | 12.0 | 9.0 | 8.0 | | | 8.0 | 60 | |
| 90 | SBDL | 24+45 | 10.0 | 12.0 | 9.0 | 13.3 | | | 13.3 | 68 | |
| 91 | SBDL | 25+70 | 15.0 | 12.0 | 9.0 | | 20.0 | | 20.0 | 78 | |
| 92 | SBDL | 26+70 | 8.0 | 12.0 | 9.0 | 10.7 | | | 10.7 | 64 | |
| 93 | SBDL | 27+25 | 8.0 | 12.0 | 9.0 | 10.7 | | | 10.7 | 64 | |
| 94 | SBDL | 27+95 | 8.0 | 12.0 | 9.0 | 10.7 | | | 10.7 | 64 | |
| 95 | SBDL | 27+20 | 40.0 | 12.0 | 9.0 | | | 53.3 | 53.3 | 128 | 19 |
| 96 | SBDL | 26+90 | 6.0 | 12.0 | 9.0 | 8.0 | | | 8.0 | 60 | |
| 97 | SBDL | 25+95 | 80.0 | 12.0 | 9.0 | | | 106.7 | 106.7 | 208 | 39 |
| 98 | SBDL | 25+80 | 35.0 | 12.0 | 9.0 | | | 46.7 | 46.7 | 118 | 17 |
| 99 | SBDL | 24+25 | 15.0 | 12.0 | 9.0 | | 20.0 | | 20.0 | 78 | |
| 100 | SBDL | 28+65 | 10.0 | 12.0 | 9.0 | 13.3 | | | 13.3 | 68 | |
| 101 | SBDL | 44+90 | 30.0 | 16.0 | 9.0 | | | 53.3 | 53.3 | 124 | 14 |
| 102 | SBPL | 45+70 | 6.0 | 12.0 | 9.0 | 8.0 | | | 8.0 | 60 | |
| 103 | SBDL | 45+80 | 8.0 | 12.0 | 9.0 | 10.7 | | | 10.7 | 64 | |
| 104 | SBDL | 45+85 | 16.0 | 12.0 | 9.0 | | 21.3 | | 21.3 | 80 | |
| 105 | SBPL | 45+90 | 10.0 | 12.0 | 9.0 | 13.3 | | | 13.3 | 68 | |
| 106 | SBDL | 45+95 | 20.0 | 6.0 | 9.0 | 13.3 | | | 13.3 | 64 | 9 |

* FAP ROUTES 323 & 322A

| | | |
|------------------------------|------------|-----------|
| USER NAME = steffemk | DESIGNED - | REVISED - |
| | DRAWN - | REVISED - |
| PLOT SCALE = 100.0000' / in. | CHECKED - | REVISED - |
| PLOT DATE = 11/12/2019 | DATE - | REVISED - |

**STATE OF ILLINOIS
DEPARTMENT OF TRANSPORTATION**

PATCHING SCHEDULES

SCALE: SHEET OF SHEETS STA. TO STA.

| F.A.P. RTE. | SECTION | COUNTY | TOTAL SHEETS | SHEET NO. |
|--------------------|--------------------|----------|------------------|-----------|
| * | D7 PATCHING 2020-3 | MACON | 6 | 5 |
| CONTRACT NO. 74931 | | | | |
| | | ILLINOIS | FED. AID PROJECT | |

| PATCH NUMBER | LANE | STATION | LENGTH (FEET) | WIDTH (FEET) | PLAN DEPTH (INCHES) | CLASS A TYPE 2, 9" (SQ YD) | CLASS A TYPE 3, 9" (SQ YD) | CLASS A TYPE 4, 9" (SQ YD) | PATCHING REINF (SQ YD) | SAW CUTS (FEET) | TIE BARS 3/4" (EACH) |
|---------------------------|------|---|---------------|--------------|---------------------|----------------------------|----------------------------|----------------------------|------------------------|-----------------|----------------------|
| NB US 51 TO EB US 36 RAMP | | USE OVERHEAD SIGN STRUCTURE AT BOTTOM OF RAMP AS STATION 0+00 | | | | | | | | | |
| 107 | RAMP | 16+57 | 6.0 | 8.0 | 9.0 | 5.3 | | | 5.3 | 44 | |
| 108 | RAMP | 16+57 | 6.0 | 8.0 | 9.0 | 5.3 | | | 5.3 | 44 | |
| NB US 51 TO WB I-72 RAMP | | USE OVERHEAD SIGN STRUCTURE AT START OF RAMP AS STATION 0+00 | | | | | | | | | |
| 109 | RAMP | 2+62 | 60.0 | 8.0 | 9.0 | | | 53.3 | 53.3 | 152 | 29 |
| 110 | RAMP | 2+62 | 60.0 | 8.0 | 9.0 | | | 53.3 | 53.3 | 152 | 29 |
| 111 | RAMP | 16+57 | 6.0 | 8.0 | 9.0 | 5.3 | | | 5.3 | 44 | |
| 112 | RAMP | 16+57 | 6.0 | 8.0 | 9.0 | 5.3 | | | 5.3 | 44 | |
| SB US 51 TO EB US 36 RAMP | | USE SOUTH SIDE OF OVERHEAD BRIDGE AT STATION 0+00 | | | | | | | | | |
| 113 | RAMP | 0+00 | 6.0 | 8.0 | 9.0 | 5.3 | | | 5.3 | 44 | |
| 114 | RAMP | 0+00 | 6.0 | 8.0 | 9.0 | 5.3 | | | 5.3 | 44 | |
| 115 | RAMP | 5+78 | 6.0 | 8.0 | 9.0 | 5.3 | | | 5.3 | 44 | |
| 116 | RAMP | 5+78 | 6.0 | 8.0 | 9.0 | 5.3 | | | 5.3 | 44 | |
| 117 | RAMP | 9+25 | 6.0 | 8.0 | 9.0 | 5.3 | | | 5.3 | 44 | |
| 118 | RAMP | 9+25 | 6.0 | 8.0 | 9.0 | 5.3 | | | 5.3 | 44 | |
| 119 | RAMP | 11+35 | 6.0 | 8.0 | 9.0 | 5.3 | | | 5.3 | 44 | |
| 120 | RAMP | 11+35 | 6.0 | 8.0 | 9.0 | 5.3 | | | 5.3 | 44 | |
| 121 | RAMP | 13+65 | 6.0 | 8.0 | 9.0 | 5.3 | | | 5.3 | 44 | |
| 122 | RAMP | 13+80 | 6.0 | 8.0 | 9.0 | 5.3 | | | 5.3 | 44 | |
| US 51 TOTALS = | | | | | | 392.7 | 137.3 | 1397.7 | 1927.7 | 6242.0 | 537.0 |
| PROJECT TOTALS = | | | | | | 629 | 212 | 2145 | 2986 | 9898 | 938 |

MODEL: Default
 FILE: \\nrcs-pub\pubroom\dat\illinois.gov\PIWDOT\Documents\DOT_Offices\IDistrict_7\Projects\I74931\CADD\DATA\CAD\Drawings\I74931-shc-schedule.dgn

* FAP ROUTES 323 & 322A

| | | | | | | | | | | | | | |
|-------------------------------|------------|-----------|---|---------------------------|-------|----|--------|-------------|---------|--------------------|--------------|-----------|---|
| USER NAME = steffenmk | DESIGNED - | REVISED - | STATE OF ILLINOIS DEPARTMENT OF TRANSPORTATION | PATCHING SCHEDULES | | | | F.A.P. RTE. | SECTION | COUNTY | TOTAL SHEETS | SHEET NO. | |
| | DRAWN - | REVISED - | | SCALE: | SHEET | OF | SHEETS | STA. | TO STA. | D7 PATCHING 2020-3 | MACON | 6 | 6 |
| PLOT SCALE = 100.0000 ' / in. | CHECKED - | REVISED - | | CONTRACT NO. 74931 | | | | | | | | | |
| PLOT DATE = 11/12/2019 | DATE - | REVISED - | | ILLINOIS FED. AID PROJECT | | | | | | | | | |